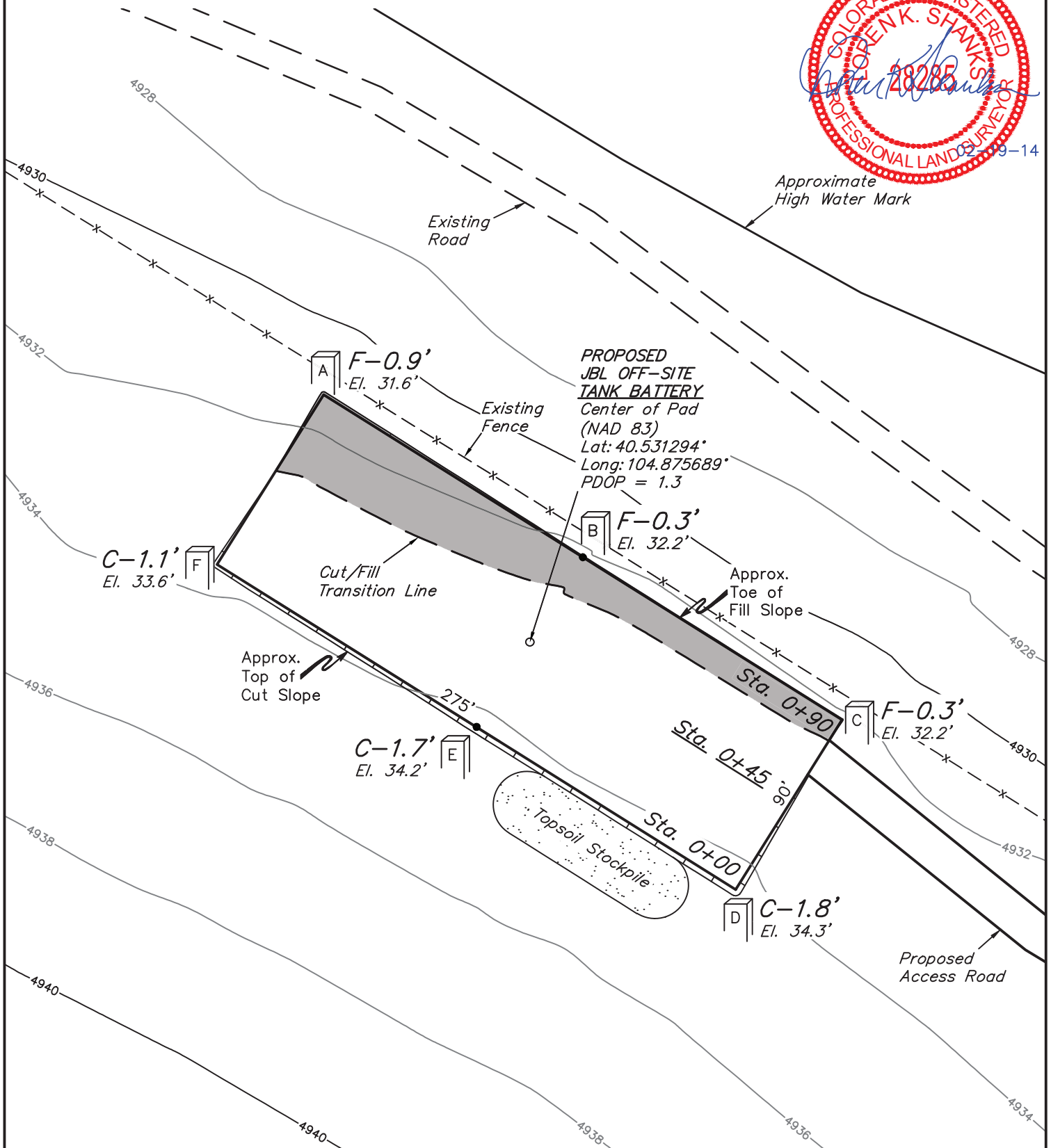
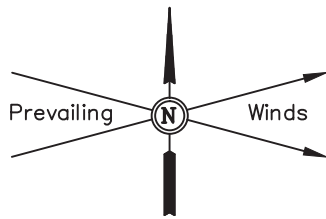


# GREAT WESTERN OIL & GAS COMPANY

CONSTRUCTION LAYOUT FOR  
JBL OFF-SITE TANK BATTERY  
SECTION 34, T7N, R67W, 6th P.M.  
2404' FNL 1567' FEL

FIGURE #1

SCALE: 1" = 60'  
DATE: 02-18-14  
DRAWN BY: J.S.



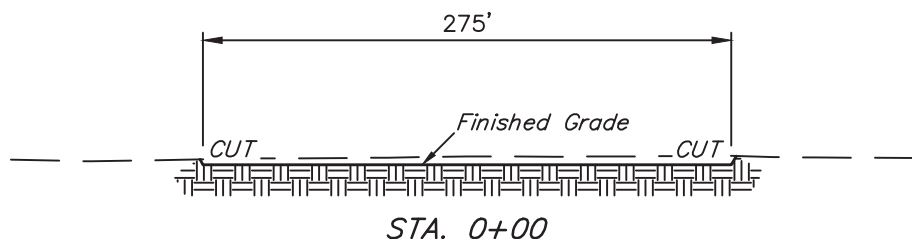
Elev. Ungraded Ground At Center of Pad Loc. Stake = 4933.1',  
FINISHED GRADE ELEV. AT Center of Pad LOC. STAKE = 4932.5'

UINTAH ENGINEERING & LAND SURVEYING  
85 So. 200 East \* Vernal, Utah 84078 \* (435) 789-1017

1" = 40'  
X-Section  
Scale  
1" = 100'  
DATE: 02-18-14  
DRAWN BY: J.S.

**GREAT WESTERN OIL & GAS COMPANY**  
**CONSTRUCTION LAYOUT CROSS SECTIONS FOR**  
**JBL OFF-SITE TANK BATTERY**  
**SECTION 34, T7N, R67W, 6th P.M.**  
**2404' FNL 1567' FEL**

**FIGURE #2**



**APPROXIMATE ACREAGE**  
TANK BATTERY SITE DISTURBANCE = ± 0.656 ACRES  
ACCESS ROAD DISTURBANCE = ± 0.713 ACRES  
**TOTAL = ± 1.369 ACRES**

\* NOTE:  
FILL QUANTITY INCLUDES  
5% FOR COMPACTION

**APPROXIMATE YARDAGES**

(6") Topsoil Stripping = 480 Cu. Yds.  
Remaining Location = 260 Cu. Yds.  
**TOTAL CUT = 740 CU. YDS.**  
**FILL = 260 CU. YDS.**

EXCESS MATERIAL = 480 Cu. Yds.  
Topsoil = 480 Cu. Yds.  
EXCESS UNBALANCE = 0 Cu. Yds.  
(After Interim Rehabilitation)

**UINTAH ENGINEERING & LAND SURVEYING**  
85 So. 200 East \* Vernal, Utah 84078 \* (435) 789-1017