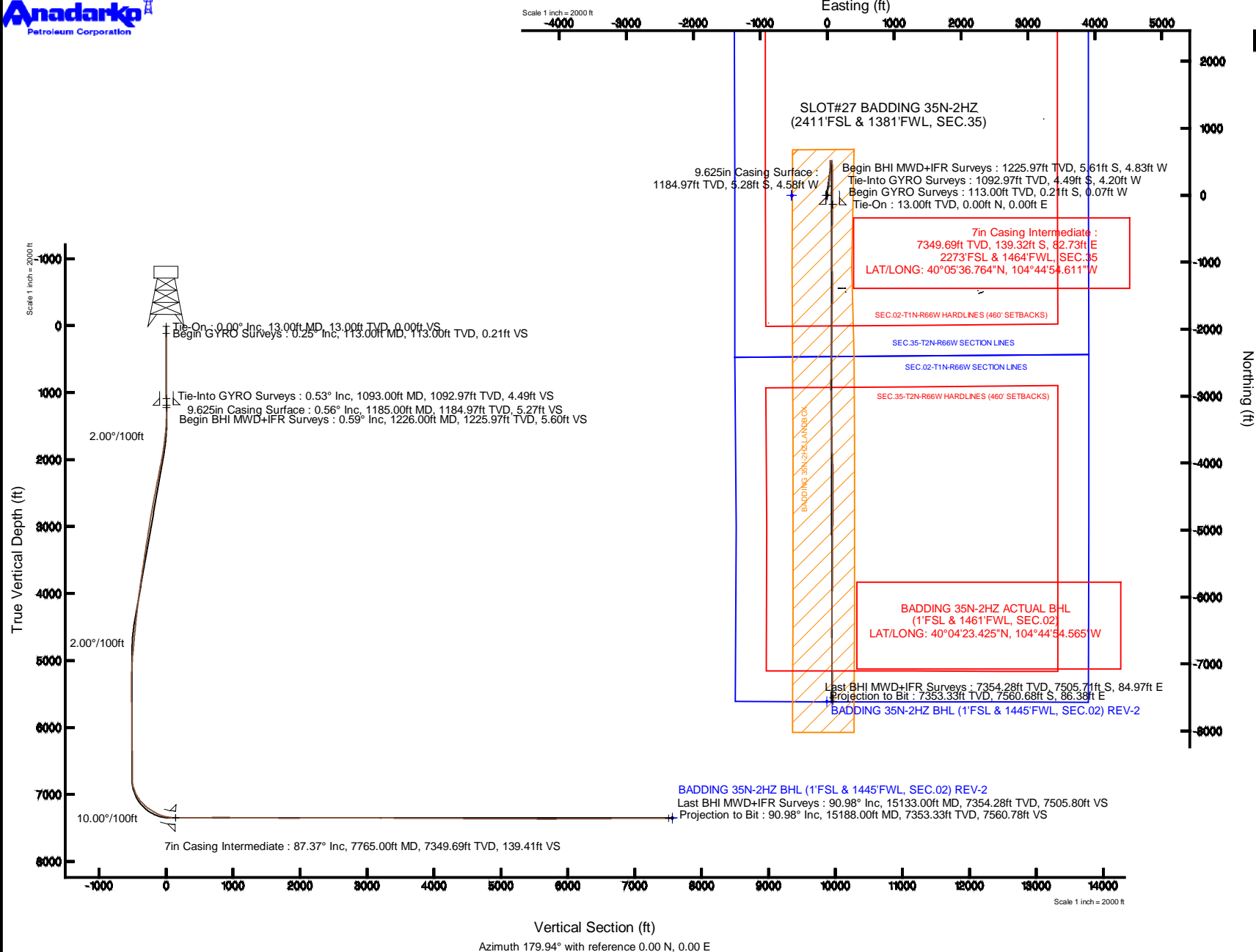


# KERR-MCGEE OIL & GAS ONSHORE LP

Location: COLORADO Slot: SLOT#27 BADDING 35N-2HZ (2411'FSL & 1381'FWL, SEC.35)  
 Field: WELD COUNTY (KERR MCGEE) Well: BADDING 35N-2HZ  
 Facility: SEC.35-T2N-R66W Wellbore: BADDING 35N-2HZ PWB

Plot reference wellpath is BADDING 35N-2HZ (REV-A.0) PWP

True vertical depths are referenced to ENSIGN 145 (RKB)	Grid System: NAD83 / Lambert Colorado SP, Northern Zone (501), US feet
Measured depths are referenced to ENSIGN 145 (RKB)	North Reference: True north
ENSIGN 145 (RKB) to Mean Sea Level: 5116 feet	Scale: True distance
Mean Sea Level to Mud line (At Slot: SLOT#27 BADDING 35N-2HZ (2411'FSL & 1381'FWL, SEC.35)): 0 feet	Depths are in feet
Coordinates are in feet referenced to Slot	Created by: precain on 26/Feb/2014



REFERENCE WELLPATH IDENTIFICATION			
Operator	KERR-MCGEE OIL & GAS ONSHORE LP	Slot	SLOT#27 BADDING 35N-2HZ (2411'FSL & 1381'FWL, SEC.35)
Area	COLORADO	Well	BADDING 35N-2HZ
Field	WELD COUNTY (KERR MCGEE)	Wellbore	BADDING 35N-2HZ AWB
Facility	SEC.35-T2N-R66W		

REPORT SETUP INFORMATION			
Projection System	NAD83 / Lambert Colorado SP, Northern Zone (501), US feet	Software System	WellArchitect® 4.0.0
North Reference	True	User	Precain
Scale	0.999961	Report Generated	26/Feb/2014 at 13:59
Convergence at slot	n/a	Database/Source file	WellArchitectDB/BADDING_35N-2HZ_AWB.xml

WELLPATH LOCATION						
	Local coordinates		Grid coordinates		Geographic coordinates	
	North[ft]	East[ft]	Easting[US ft]	Northing[US ft]	Latitude	Longitude
Slot Location	1467.90	-2265.36	3210159.32	1277952.72	40°05'38.141"N	104°44'55.676"W
Facility Reference Pt			3212437.07	1276504.33	40°05'23.636"N	104°44'26.527"W
Field Reference Pt			3197771.84	1268891.29	40°04'09.600"N	104°47'36.000"W

WELLPATH DATUM			
Calculation method	Minimum curvature	ENSIGN 145 (RKB) to Facility Vertical Datum	5116.00ft
Horizontal Reference Pt	Slot	ENSIGN 145 (RKB) to Mean Sea Level	5116.00ft
Vertical Reference Pt	ENSIGN 145 (RKB)	ENSIGN 145 (RKB) to Mud Line at Slot (SLOT#27 BADDING 35N-2HZ (2411'FSL & 1381'FWL, SEC.35))	5116.00ft
MD Reference Pt	ENSIGN 145 (RKB)	Section Origin	N 0.00, E 0.00 ft
Field Vertical Reference	Mean Sea Level	Section Azimuth	179.94°

# Actual Wellpath Report

BADDING 35N-2HZ AWP

Page 2 of 7

## REFERENCE WELLPATH IDENTIFICATION

Operator	KERR-MCGEE OIL & GAS ONSHORE LP	Slot	SLOT#27 BADDING 35N-2HZ (2411'FSL & 1381'FWL, SEC.35)
Area	COLORADO	Well	BADDING 35N-2HZ
Field	WELD COUNTY (KERR MCGEE)	Wellbore	BADDING 35N-2HZ AWB
Facility	SEC.35-T2N-R66W		

## WELLPATH DATA (139 stations) † = interpolated/extrapolated station

MD [ft]	Inclination [°]	Azimuth [°]	TVD [ft]	Vert Sect [ft]	North [ft]	East [ft]	Latitude	Longitude	DLS [°/100ft]	Comments
0.00†	0.000	199.110	0.00	0.00	0.00	0.00	40°05'38.141"N	104°44'55.676"W	0.00	
13.00	0.000	199.110	13.00	0.00	0.00	0.00	40°05'38.141"N	104°44'55.676"W	0.00	Tie-On
113.00	0.250	199.110	113.00	0.21	-0.21	-0.07	40°05'38.139"N	104°44'55.677"W	0.25	Begin GYRO Surveys
213.00	0.120	222.590	213.00	0.49	-0.49	-0.21	40°05'38.136"N	104°44'55.679"W	0.15	
313.00	0.300	183.030	313.00	0.83	-0.83	-0.30	40°05'38.133"N	104°44'55.680"W	0.22	
413.00	0.410	230.680	413.00	1.32	-1.32	-0.59	40°05'38.128"N	104°44'55.684"W	0.30	
513.00	0.170	179.950	513.00	1.69	-1.69	-0.87	40°05'38.124"N	104°44'55.687"W	0.33	
613.00	0.470	246.900	612.99	2.00	-2.00	-1.24	40°05'38.121"N	104°44'55.692"W	0.43	
713.00	0.300	288.640	712.99	2.08	-2.08	-1.87	40°05'38.120"N	104°44'55.700"W	0.32	
813.00	0.400	252.940	812.99	2.09	-2.10	-2.45	40°05'38.120"N	104°44'55.708"W	0.23	
913.00	0.720	230.690	912.99	2.59	-2.60	-3.27	40°05'38.115"N	104°44'55.718"W	0.38	
1013.00	0.760	196.160	1012.98	3.63	-3.63	-3.94	40°05'38.105"N	104°44'55.727"W	0.44	
1093.00	0.530	197.770	1092.97	4.49	-4.49	-4.20	40°05'38.097"N	104°44'55.730"W	0.29	Tie-Into GYRO Surveys
1226.00	0.590	219.590	1225.97	5.60	-5.61	-4.83	40°05'38.086"N	104°44'55.738"W	0.17	Begin BHI MWD+IFR Surveys
1257.00	0.680	226.140	1256.96	5.85	-5.86	-5.06	40°05'38.083"N	104°44'55.741"W	0.37	
1350.00	1.250	337.590	1349.96	5.30	-5.30	-5.84	40°05'38.089"N	104°44'55.751"W	1.75	
1444.00	2.840	358.420	1443.89	2.02	-2.03	-6.30	40°05'38.121"N	104°44'55.757"W	1.84	
1537.00	4.320	1.440	1536.71	-3.79	3.78	-6.27	40°05'38.178"N	104°44'55.757"W	1.60	
1631.00	6.130	8.560	1630.32	-12.29	12.28	-5.44	40°05'38.262"N	104°44'55.746"W	2.04	
1725.00	7.940	11.440	1723.61	-23.61	23.61	-3.40	40°05'38.374"N	104°44'55.720"W	1.96	
1818.00	8.450	13.880	1815.66	-36.54	36.54	-0.49	40°05'38.502"N	104°44'55.682"W	0.66	
1912.00	10.100	20.320	1908.43	-50.97	50.97	4.03	40°05'38.645"N	104°44'55.624"W	2.07	
2005.00	11.170	16.930	1999.83	-67.23	67.24	9.48	40°05'38.805"N	104°44'55.554"W	1.33	
2099.00	11.030	16.700	2092.07	-84.55	84.56	14.72	40°05'38.977"N	104°44'55.487"W	0.16	
2192.00	11.460	11.870	2183.29	-102.10	102.13	19.18	40°05'39.150"N	104°44'55.429"W	1.11	
2285.00	11.490	10.870	2274.43	-120.24	120.26	22.82	40°05'39.329"N	104°44'55.382"W	0.22	
2379.00	11.140	8.450	2366.60	-138.41	138.44	25.92	40°05'39.509"N	104°44'55.342"W	0.63	
2472.00	11.070	7.520	2457.86	-156.15	156.18	28.41	40°05'39.684"N	104°44'55.310"W	0.21	
2566.00	10.410	4.870	2550.21	-173.55	173.59	30.31	40°05'39.856"N	104°44'55.286"W	0.88	
2659.00	10.490	4.800	2641.67	-190.36	190.39	31.74	40°05'40.023"N	104°44'55.268"W	0.09	
2753.00	10.210	3.590	2734.14	-207.20	207.24	32.97	40°05'40.189"N	104°44'55.252"W	0.38	
2846.00	9.820	4.040	2825.72	-223.34	223.37	34.05	40°05'40.348"N	104°44'55.238"W	0.43	
2939.00	9.540	5.730	2917.40	-238.91	238.95	35.38	40°05'40.502"N	104°44'55.221"W	0.43	
3119.00	8.710	5.610	3095.12	-267.32	267.36	38.20	40°05'40.783"N	104°44'55.184"W	0.46	
3299.00	9.120	2.720	3272.95	-295.13	295.17	40.21	40°05'41.058"N	104°44'55.159"W	0.34	
3480.00	8.410	3.670	3451.83	-322.66	322.71	41.74	40°05'41.330"N	104°44'55.139"W	0.40	
3660.00	8.330	2.280	3629.91	-348.83	348.87	43.10	40°05'41.589"N	104°44'55.121"W	0.12	
3750.00	8.940	4.450	3718.89	-362.31	362.36	43.90	40°05'41.722"N	104°44'55.111"W	0.77	
3840.00	8.430	2.180	3807.86	-375.87	375.92	44.69	40°05'41.856"N	104°44'55.101"W	0.68	
4020.00	7.910	1.880	3986.03	-401.44	401.49	45.60	40°05'42.109"N	104°44'55.089"W	0.29	
4200.00	6.660	0.700	4164.58	-424.25	424.31	46.13	40°05'42.334"N	104°44'55.082"W	0.70	
4380.00	5.990	358.400	4343.48	-444.08	444.13	46.00	40°05'42.530"N	104°44'55.084"W	0.40	
4560.00	5.680	0.000	4522.55	-462.38	462.43	45.74	40°05'42.711"N	104°44'55.087"W	0.19	
4740.00	5.280	358.200	4701.73	-479.56	479.61	45.48	40°05'42.881"N	104°44'55.091"W	0.24	
4920.00	5.330	356.240	4880.96	-496.18	496.23	44.67	40°05'43.045"N	104°44'55.101"W	0.10	

# Actual Wellpath Report

BADDING 35N-2HZ AWP

Page 3 of 7

## REFERENCE WELLPATH IDENTIFICATION

Operator	KERR-MCGEE OIL & GAS ONSHORE LP	Slot	SLOT#27 BADDING 35N-2HZ (2411'FSL & 1381'FWL, SEC.35)
Area	COLORADO	Well	BADDING 35N-2HZ
Field	WELD COUNTY (KERR MCGEE)	Wellbore	BADDING 35N-2HZ AWB
Facility	SEC.35-T2N-R66W		

## WELLPATH DATA (139 stations) † = interpolated/extrapolated station

MD [ft]	Inclination [°]	Azimuth [°]	TVD [ft]	Vert Sect [ft]	North [ft]	East [ft]	Latitude	Longitude	DLS [°/100ft]	Comments
5010.00	4.440	5.560	4970.63	-503.82	503.87	44.73	40°05'43.120"N	104°44'55.100"W	1.32	
5100.00	3.170	5.580	5060.43	-509.76	509.82	45.31	40°05'43.179"N	104°44'55.093"W	1.41	
5190.00	2.740	22.000	5150.31	-514.24	514.29	46.36	40°05'43.223"N	104°44'55.079"W	1.05	
5281.00	2.000	46.120	5241.23	-517.35	517.40	48.32	40°05'43.254"N	104°44'55.054"W	1.35	
5371.00	0.820	34.920	5331.21	-518.97	519.02	49.82	40°05'43.270"N	104°44'55.035"W	1.34	
5461.00	1.710	133.280	5421.19	-518.57	518.63	51.17	40°05'43.266"N	104°44'55.018"W	2.22	
5641.00	1.490	134.800	5601.12	-515.08	515.14	54.78	40°05'43.232"N	104°44'54.971"W	0.12	
6000.00	0.980	107.930	5960.04	-510.84	510.90	61.01	40°05'43.190"N	104°44'54.891"W	0.21	
6360.00	1.740	110.840	6319.93	-507.93	508.01	69.05	40°05'43.161"N	104°44'54.787"W	0.21	
6739.00	0.410	86.300	6698.86	-505.97	506.05	75.78	40°05'43.142"N	104°44'54.701"W	0.36	
6810.00	0.910	184.320	6769.86	-505.42	505.51	75.99	40°05'43.136"N	104°44'54.698"W	1.48	
6855.00	5.550	180.980	6814.77	-502.89	502.97	75.93	40°05'43.111"N	104°44'54.699"W	10.32	
6900.00	10.550	181.220	6859.32	-496.59	496.68	75.80	40°05'43.049"N	104°44'54.701"W	11.11	
6945.00	15.360	181.330	6903.16	-486.51	486.59	75.58	40°05'42.950"N	104°44'54.703"W	10.69	
6990.00	20.830	178.100	6945.92	-472.54	472.63	75.71	40°05'42.812"N	104°44'54.702"W	12.35	
7035.00	26.230	177.390	6987.16	-454.60	454.68	76.42	40°05'42.634"N	104°44'54.693"W	12.02	
7080.00	30.930	177.360	7026.66	-433.10	433.18	77.41	40°05'42.422"N	104°44'54.680"W	10.44	
7125.00	34.610	177.870	7064.50	-408.76	408.85	78.42	40°05'42.181"N	104°44'54.667"W	8.20	
7170.00	39.480	179.900	7100.40	-381.67	381.76	78.92	40°05'41.914"N	104°44'54.661"W	11.16	
7215.00	43.970	180.960	7133.98	-351.73	351.82	78.68	40°05'41.618"N	104°44'54.664"W	10.10	
7260.00	48.780	181.620	7165.02	-319.17	319.26	77.94	40°05'41.296"N	104°44'54.673"W	10.74	
7306.00	52.250	181.210	7194.27	-283.69	283.78	77.07	40°05'40.945"N	104°44'54.684"W	7.57	
7351.00	55.340	180.130	7220.84	-247.39	247.47	76.65	40°05'40.587"N	104°44'54.690"W	7.13	
7396.00	58.950	178.890	7245.25	-209.59	209.68	76.98	40°05'40.213"N	104°44'54.685"W	8.35	
7441.00	61.100	179.490	7267.74	-170.62	170.70	77.53	40°05'39.828"N	104°44'54.678"W	4.92	
7486.00	63.840	177.580	7288.53	-130.73	130.82	78.56	40°05'39.434"N	104°44'54.665"W	7.16	
7531.00	69.020	178.060	7306.52	-89.53	89.62	80.12	40°05'39.027"N	104°44'54.645"W	11.55	
7576.00	74.230	178.320	7320.70	-46.86	46.95	81.47	40°05'38.605"N	104°44'54.628"W	11.59	
7621.00	77.390	178.950	7331.73	-3.25	3.34	82.51	40°05'38.174"N	104°44'54.614"W	7.15	
7666.00	80.670	179.780	7340.30	40.92	-40.83	83.00	40°05'37.738"N	104°44'54.608"W	7.51	
7718.00	85.250	180.140	7346.67	92.52	-92.42	83.03	40°05'37.228"N	104°44'54.608"W	8.83	
7765.00†	87.367	180.584	7349.69	139.41	-139.32	82.73	40°05'36.764"N	104°44'54.611"W	4.60	7" Casing Point
7839.00	90.700	181.280	7350.94	213.38	-213.29	81.53	40°05'36.033"N	104°44'54.627"W	4.60	
7931.00	89.720	181.280	7350.60	305.35	-305.27	79.48	40°05'35.124"N	104°44'54.653"W	1.07	
8025.00	90.370	181.400	7350.53	399.33	-399.24	77.28	40°05'34.196"N	104°44'54.682"W	0.70	
8115.00	90.640	180.910	7349.74	489.30	-489.22	75.46	40°05'33.306"N	104°44'54.705"W	0.62	
8212.00	91.630	180.860	7347.82	586.27	-586.19	73.97	40°05'32.348"N	104°44'54.724"W	1.02	
8305.00	90.950	179.940	7345.72	679.24	-679.16	73.32	40°05'31.429"N	104°44'54.733"W	1.23	
8399.00	90.420	180.100	7344.60	773.23	-773.15	73.28	40°05'30.501"N	104°44'54.733"W	0.59	
8492.00	89.290	180.230	7344.83	866.23	-866.15	73.02	40°05'29.582"N	104°44'54.737"W	1.22	
8585.00	89.590	179.660	7345.74	959.23	-959.14	73.11	40°05'28.663"N	104°44'54.735"W	0.69	
8772.00	90.060	178.190	7346.31	1146.19	-1146.10	76.61	40°05'26.815"N	104°44'54.690"W	0.83	
8865.00	89.500	179.020	7346.67	1239.16	-1239.08	78.88	40°05'25.896"N	104°44'54.661"W	1.08	
8959.00	89.250	179.570	7347.70	1333.15	-1333.06	80.03	40°05'24.967"N	104°44'54.646"W	0.64	
9053.00	89.250	180.460	7348.93	1427.14	-1427.05	80.01	40°05'24.039"N	104°44'54.647"W	0.95	

# Actual Wellpath Report

BADDING 35N-2HZ AWP

Page 4 of 7

REFERENCE WELLPATH IDENTIFICATION			
Operator	KERR-MCGEE OIL & GAS ONSHORE LP	Slot	SLOT#27 BADDING 35N-2HZ (2411'FSL & 1381'FWL, SEC.35)
Area	COLORADO	Well	BADDING 35N-2HZ
Field	WELD COUNTY (KERR MCGEE)	Wellbore	BADDING 35N-2HZ AWB
Facility	SEC.35-T2N-R66W		

WELLPATH DATA (139 stations)										
MD [ft]	Inclination [°]	Azimuth [°]	TVD [ft]	Vert Sect [ft]	North [ft]	East [ft]	Latitude	Longitude	DLS [°/100ft]	Comments
9146.00	88.920	181.430	7350.41	1520.11	-1520.03	78.48	40°05'23.120"N	104°44'54.666"W	1.10	
9333.00	89.500	181.500	7352.99	1707.03	-1706.95	73.70	40°05'21.273"N	104°44'54.728"W	0.31	
9520.00	90.210	180.590	7353.46	1893.99	-1893.91	70.29	40°05'19.425"N	104°44'54.772"W	0.62	
9700.00	90.860	179.920	7351.78	2073.98	-2073.90	69.48	40°05'17.646"N	104°44'54.782"W	0.52	
9880.00	90.770	181.380	7349.22	2253.94	-2253.87	67.44	40°05'15.868"N	104°44'54.808"W	0.81	
9970.00	90.460	181.910	7348.26	2343.89	-2343.82	64.86	40°05'14.979"N	104°44'54.842"W	0.68	
10060.00	89.630	181.860	7348.19	2433.84	-2433.77	61.90	40°05'14.090"N	104°44'54.880"W	0.92	
10150.00	90.550	181.620	7348.04	2523.80	-2523.73	59.17	40°05'13.201"N	104°44'54.915"W	1.06	
10240.00	89.440	181.030	7348.05	2613.77	-2613.71	57.08	40°05'12.312"N	104°44'54.942"W	1.40	
10330.00	89.590	180.810	7348.81	2703.75	-2703.69	55.64	40°05'11.423"N	104°44'54.960"W	0.30	
10420.00	89.930	180.220	7349.19	2793.75	-2793.69	54.83	40°05'10.533"N	104°44'54.971"W	0.76	
10600.00	89.200	179.350	7350.56	2973.74	-2973.68	55.51	40°05'08.755"N	104°44'54.962"W	0.63	
10780.00	89.560	177.750	7352.51	3153.67	-3153.60	60.06	40°05'06.977"N	104°44'54.903"W	0.91	
10870.00	90.300	178.780	7352.62	3243.63	-3243.56	62.79	40°05'06.088"N	104°44'54.868"W	1.41	
11050.00	89.560	178.060	7352.84	3423.56	-3423.49	67.75	40°05'04.310"N	104°44'54.804"W	0.57	
11230.00	90.210	179.550	7353.20	3603.52	-3603.44	71.50	40°05'02.531"N	104°44'54.756"W	0.90	
11320.00	90.000	179.280	7353.03	3693.52	-3693.44	72.42	40°05'01.642"N	104°44'54.744"W	0.38	
11500.00	89.560	177.800	7353.72	3873.46	-3873.37	77.01	40°04'59.864"N	104°44'54.685"W	0.86	
11590.00	89.630	177.480	7354.36	3963.38	-3963.29	80.71	40°04'58.975"N	104°44'54.638"W	0.36	
11680.00	88.390	178.010	7355.91	4053.30	-4053.21	84.25	40°04'58.087"N	104°44'54.592"W	1.50	
11770.00	89.870	179.240	7357.28	4143.26	-4143.17	86.41	40°04'57.198"N	104°44'54.564"W	2.14	
11860.00	89.720	179.620	7357.60	4233.26	-4233.16	87.31	40°04'56.308"N	104°44'54.553"W	0.45	
11950.00	89.500	180.030	7358.21	4323.26	-4323.16	87.58	40°04'55.419"N	104°44'54.549"W	0.52	
12040.00	89.160	180.840	7359.27	4413.24	-4413.15	86.90	40°04'54.530"N	104°44'54.558"W	0.98	
12220.00	88.920	179.740	7362.28	4593.21	-4593.12	85.99	40°04'52.751"N	104°44'54.570"W	0.63	
12310.00	89.190	180.330	7363.77	4683.20	-4683.11	85.93	40°04'51.862"N	104°44'54.570"W	0.72	
12400.00	89.750	180.680	7364.60	4773.19	-4773.10	85.14	40°04'50.972"N	104°44'54.581"W	0.73	
12490.00	90.360	180.660	7364.51	4863.18	-4863.09	84.09	40°04'50.083"N	104°44'54.594"W	0.68	
12580.00	90.740	180.910	7363.65	4953.17	-4953.08	82.86	40°04'49.194"N	104°44'54.610"W	0.51	
12670.00	89.840	180.060	7363.19	5043.16	-5043.07	82.09	40°04'48.304"N	104°44'54.620"W	1.38	
12760.00	90.770	179.980	7362.72	5133.16	-5133.07	82.06	40°04'47.415"N	104°44'54.620"W	1.04	
12850.00	90.030	181.170	7362.09	5223.15	-5223.06	81.16	40°04'46.526"N	104°44'54.632"W	1.56	
12940.00	88.670	180.830	7363.11	5313.13	-5313.04	79.59	40°04'45.637"N	104°44'54.652"W	1.56	
13120.00	89.350	179.940	7366.22	5493.09	-5493.01	78.38	40°04'43.858"N	104°44'54.668"W	0.62	
13210.00	89.560	179.840	7367.07	5583.09	-5583.00	78.55	40°04'42.969"N	104°44'54.665"W	0.26	
13390.00	90.330	180.690	7367.25	5763.08	-5763.00	77.72	40°04'41.190"N	104°44'54.676"W	0.64	
13570.00	90.580	180.620	7365.82	5943.06	-5942.98	75.66	40°04'39.411"N	104°44'54.703"W	0.14	
13660.00	91.320	180.180	7364.33	6033.04	-6032.96	75.03	40°04'38.522"N	104°44'54.711"W	0.96	
13750.00	90.240	180.970	7363.10	6123.03	-6122.95	74.13	40°04'37.633"N	104°44'54.722"W	1.49	
13930.00	90.180	180.960	7362.44	6303.00	-6302.92	71.10	40°04'35.854"N	104°44'54.761"W	0.03	
14110.00	90.400	180.380	7361.53	6482.98	-6482.91	68.99	40°04'34.076"N	104°44'54.788"W	0.34	
14290.00	90.770	179.290	7359.69	6662.97	-6662.89	69.51	40°04'32.297"N	104°44'54.782"W	0.64	
14380.00	89.810	178.660	7359.24	6752.95	-6752.88	71.12	40°04'31.408"N	104°44'54.761"W	1.28	
14560.00	90.180	179.410	7359.25	6932.93	-6932.85	74.15	40°04'29.629"N	104°44'54.722"W	0.46	
14740.00	90.180	179.180	7358.69	7112.92	-7112.84	76.37	40°04'27.851"N	104°44'54.694"W	0.13	

# Actual Wellpath Report

BADDING 35N-2HZ AWP

Page 5 of 7

## REFERENCE WELLPATH IDENTIFICATION

Operator	KERR-MCGEE OIL & GAS ONSHORE LP	Slot	SLOT#27 BADDING 35N-2HZ (2411'FSL & 1381'FWL, SEC.35)
Area	COLORADO	Well	BADDING 35N-2HZ
Field	WELD COUNTY (KERR MCGEE)	Wellbore	BADDING 35N-2HZ AWB
Facility	SEC.35-T2N-R66W		

## WELLPATH DATA (139 stations)

MD [ft]	Inclination [°]	Azimuth [°]	TVD [ft]	Vert Sect [ft]	North [ft]	East [ft]	Latitude	Longitude	DLS [°/100ft]	Comments
14920.00	91.140	178.710	7356.61	7292.87	-7292.79	79.68	40°04'26.072"N	104°44'54.651"W	0.59	
15010.00	90.210	178.550	7355.55	7382.84	-7382.76	81.83	40°04'25.183"N	104°44'54.623"W	1.05	
15133.00	90.980	178.530	7354.28	7505.80	-7505.71	84.97	40°04'23.968"N	104°44'54.583"W	0.63	Last BHI MWD+IFR Surveys
15188.00	90.980	178.530	7353.33	7560.78	-7560.68	86.38	40°04'23.425"N	104°44'54.565"W	0.00	Projection to Bit

## HOLE & CASING SECTIONS - Ref Wellbore: BADDING 35N-2HZ AWB Ref Wellpath: BADDING 35N-2HZ AWP

String/Diameter	Start MD [ft]	End MD [ft]	Interval [ft]	Start TVD [ft]	End TVD [ft]	Start N/S [ft]	Start E/W [ft]	End N/S [ft]	End E/W [ft]
13.5in Open Hole	13.00	1195.00	1182.00	13.00	1194.97	0.00	0.00	-5.36	-4.64
9.625in Casing Surface	13.00	1185.00	1172.00	13.00	1184.97	0.00	0.00	-5.28	-4.58
8.75in Open Hole	1195.00	7775.00	6580.00	1194.97	7350.11	-5.36	-4.64	-149.31	82.62
7in Casing Intermediate	13.00	7765.00	7752.00	13.00	7349.69	0.00	0.00	-139.32	82.73
6.125in Open Hole	7775.00	15188.00	7413.00	7350.11	7353.33	-149.31	82.62	-7560.68	86.38

# Actual Wellpath Report

BADDING 35N-2HZ AWP

Page 6 of 7

## REFERENCE WELLPATH IDENTIFICATION

Operator	KERR-MCGEE OIL & GAS ONSHORE LP	Slot	SLOT#27 BADDING 35N-2HZ (2411'FSL & 1381'FWL, SEC.35)
Area	COLORADO	Well	BADDING 35N-2HZ
Field	WELD COUNTY (KERR MCGEE)	Wellbore	BADDING 35N-2HZ AWB
Facility	SEC.35-T2N-R66W		

## TARGETS

Name	MD [ft]	TVD [ft]	North [ft]	East [ft]	Grid East [US ft]	Grid North [US ft]	Latitude	Longitude	Shape
SEC.02-T1N-R66W HARDLINES (460' SETBACKS)		2.00	-3.64	-529.95	3209629.44	1277944.59	40°05'38.105"N	104°45'02.495"W	polygon
SEC.02-T1N-R66W SECTION LINES		2.00	-3.64	-529.95	3209629.44	1277944.59	40°05'38.105"N	104°45'02.495"W	polygon
SEC.35-T2N-R66W HARDLINES (460' SETBACKS)		2.00	-3.64	-529.95	3209629.44	1277944.59	40°05'38.105"N	104°45'02.495"W	polygon
SEC.35-T2N-R66W SECTION LINES		2.00	-3.64	-529.95	3209629.44	1277944.59	40°05'38.105"N	104°45'02.495"W	polygon
BADDING 35N-2HZ BHL (1'FSL & 1445'FWL, SEC.02) REV-2		7351.00	-7561.27	71.79	3210295.16	1270392.64	40°04'23.419"N	104°44'54.753"W	point
BADDING 35N-2HZ BHL ON PLAT (1'FSL & 1370'FWL, SEC.02) REV-1		7351.00	-7561.27	-4.79	3210218.58	1270391.99	40°04'23.419"N	104°44'55.738"W	point
BADDING 35N-2HZ LANDBOX		7351.00	0.00	0.00	3210159.32	1277952.72	40°05'38.141"N	104°44'55.676"W	polygon

## WELLPATH COMPOSITION - Ref Wellbore: BADDING 35N-2HZ AWB Ref Wellpath: BADDING 35N-2HZ AWP

Start MD [ft]	End MD [ft]	Positional Uncertainty Model	Log Name/Comment	Wellbore
13.00	1093.00	Generic gyro - continuous (Standard)	MS ENERGY SERVICES GYRO SURVEYS <113-1093>	BADDING 35N-2HZ AWB
1093.00	7718.00	NaviTrak (MAGCORR,IFR)	BHI MWD+IFR SURVEYS 8 3/4" HOLE <1226-7718>	BADDING 35N-2HZ AWB
7718.00	15133.00	NaviTrak (MAGCORR,IFR)	BHI MWD+IFR SURVEYS 6 1/8" HOLE <7839-15133>	BADDING 35N-2HZ AWB
15133.00	15188.00	Blind Drilling (std)	Projection to bit	BADDING 35N-2HZ AWB



# Actual Wellpath Report

BADDING 35N-2HZ AWP

Page 7 of 7

REFERENCE WELLPATH IDENTIFICATION			
Operator	KERR-MCGEE OIL & GAS ONSHORE LP	Slot	SLOT#27 BADDING 35N-2HZ (2411'FSL & 1381'FWL, SEC.35)
Area	COLORADO	Well	BADDING 35N-2HZ
Field	WELD COUNTY (KERR MCGEE)	Wellbore	BADDING 35N-2HZ AWB
Facility	SEC.35-T2N-R66W		

WELLPATH COMMENTS				
MD [ft]	Inclination [°]	Azimuth [°]	TVD [ft]	Comment
13.00	0.000	199.110	13.00	Tie-On
113.00	0.250	199.110	113.00	Begin GYRO Surveys
1093.00	0.530	197.770	1092.97	Tie-Into GYRO Surveys
1226.00	0.590	219.590	1225.97	Begin BHI MWD+IFR Surveys
7765.00	87.367	180.584	7349.69	7" Casing Point
15133.00	90.980	178.530	7354.28	Last BHI MWD+IFR Surveys
15188.00	90.980	178.530	7353.33	Projection to Bit