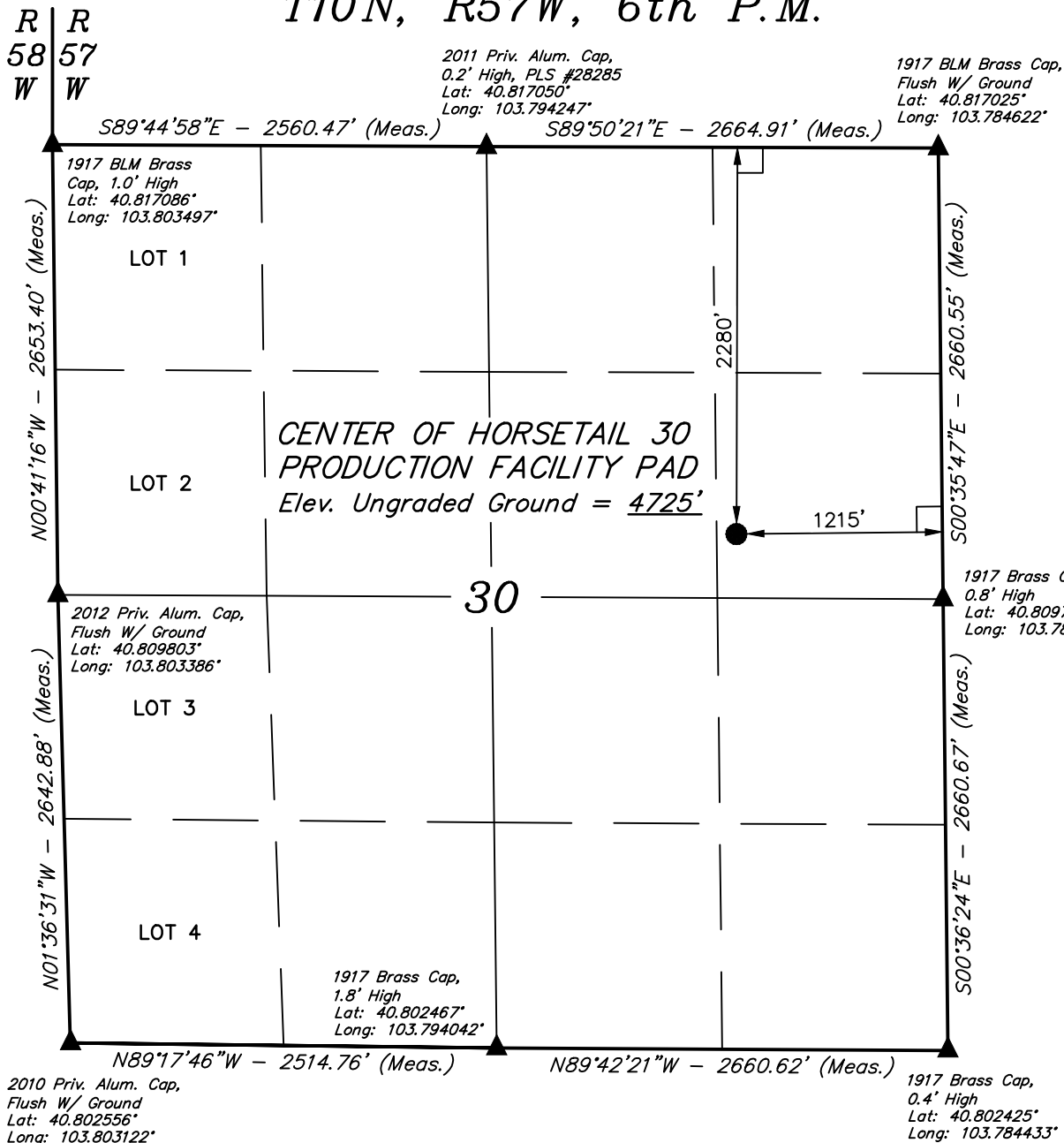


T10N, R57W, 6th P.M.

WHITING OIL & GAS CORP.

Production Facility location, CENTER OF HORSETAIL 30 PRODUCTION FACILITY PAD, located as shown in the SE 1/4 NE 1/4 of Section 30, T10N, R57W, 6th P.M., Weld County, Colorado.

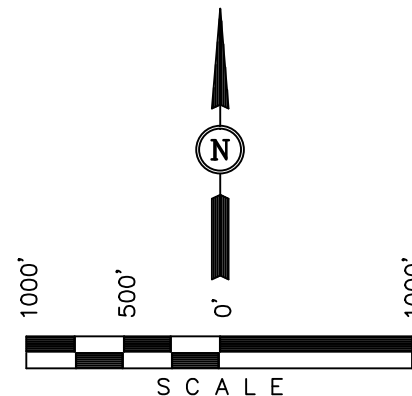


BASIS OF ELEVATION

SPOT ELEVATION LOCATED AT THE NORTHEAST CORNER OF SECTION 15, T9N, R58W, 6th P.M. TAKEN FROM THE GATEHOOK SPRING, QUADRANGLE, COLORADO, WELD COUNTY, 7.5 MINUTE QUAD (TOPOGRAPHIC MAP) PUBLISHED BY THE UNITED STATES DEPARTMENT OF THE INTERIOR, GEOLOGICAL SURVEY. SAID ELEVATION IS MARKED AS BEING 4679 FEET.

BASIS OF BEARINGS

BASIS OF BEARINGS IS A G.P.S. OBSERVATION.



CERTIFICATION

THIS IS TO CERTIFY THAT THE ABOVE PLAT WAS PREPARED FROM FIELD NOTES OF ACTUAL SURVEYS MADE BY ME OR UNDER MY SUPERVISION AND THAT THE SAME ARE TRUE AND CORRECT TO THE BEST OF MY KNOWLEDGE AND BELIEF.

REGISTERED LAND SURVEYOR
REGISTRATION NO. 28285
STATE OF COLORADO

- LEGEND:**
- └─┘ = 90° SYMBOL
 - = PROPOSED WELLHEAD.
 - ▲ = SECTION CORNERS LOCATED.

PDOP = 1.1
NAD 83 (CENTER OF HORSETAIL 30 PRODUCTION FACILITY PAD)
LATITUDE = 40°48'38.81" (40.810781)
LONGITUDE = 103°47'20.14" (103.788928)
NAD 27 (CENTER OF HORSETAIL 30 PRODUCTION FACILITY PAD)
LATITUDE = 40°48'38.87" (40.810797)
LONGITUDE = 103°47'18.34" (103.788428)

UINTAH ENGINEERING & LAND SURVEYING		
85 SOUTH 200 EAST - VERNAL, UTAH 84078		
(435) 789-1017		
SCALE 1" = 1000'	DATE SURVEYED: 02-19-14	DATE DRAWN: 02-21-14
PARTY ALLEN GEIST K.H. H.K.W.	REFERENCES G.L.O. PLAT	
WEATHER COLD	FILE WHITING OIL & GAS CORP.	