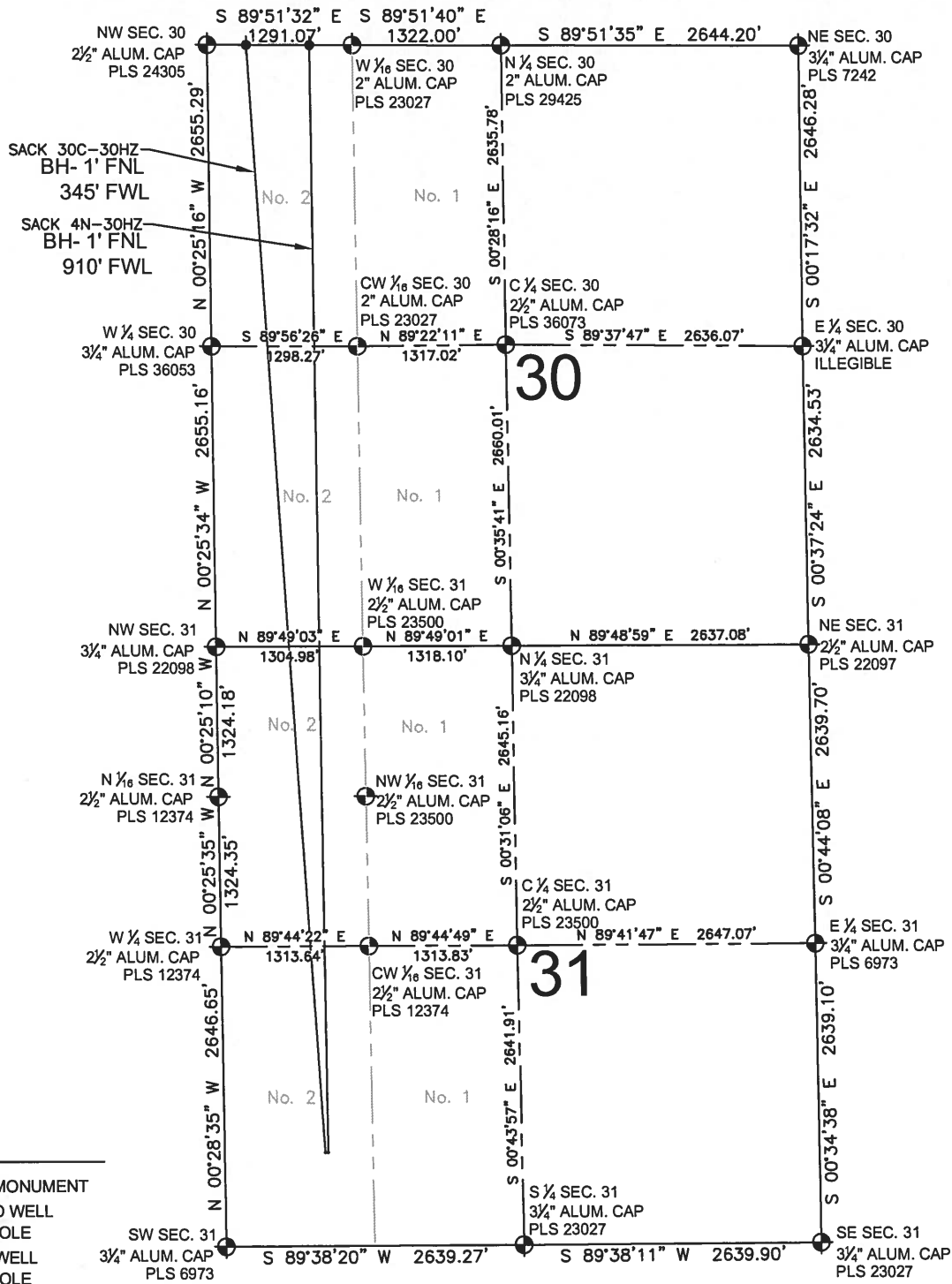


SACK 30C-30HZ MULTI-WELL PLAN

SECTION 31, TOWNSHIP 1 NORTH, RANGE 67 WEST, 6TH P.M.



LEGEND

- ⊕ = EXISTING MONUMENT
- = PROPOSED WELL
- ⊕ = BOTTOM HOLE
- ◊ = EXISTING WELL
- BH= BOTTOM HOLE

NOTES:

SACK 30C-30HZ TO BE AT 825' FSL, 895' FWL.
 BOTTOM HOLE AT 1' FNL & 345' FWL,
 SACK 4N-30HZ TO BE AT 825' FSL, 919' FWL.
 BOTTOM HOLE AT 1' FNL & 910' FWL,

PREPARED BY:

PFS llc
 Petroleum Field Services, LLC
 1801 W. 13th Ave.
 Denver, CO 80204

KERR-MCGEE OIL & GAS ONSHORE LP

FIELD DATE:
08-01-13
 DRAWING DATE:
08-06-13

SURFACE LOCATION:
 LOT 2, SW 1/4, SEC. 31, T1N, R67W, 6TH P.M.
 WELD COUNTY, COLORADO

