



410 17th Street, Suite 1500
Denver, CO 80202
(720) 440-6100 phone
(720) 305-0804 fax

Bonanzacrk.com

March 3, 2014

Colorado Oil and Gas Conservation Commission
The Chancery Building
1120 Lincoln Street, Suite 801
Denver, CO 80203

Attn: Matthew Lepore, Director

Re: Notice of 318A(I).a(4).D Well Proposal
State Antelope E-12-1XRLNC
SHL: SESW (330' FSL and 1,390' FWL) Sec 12-5N-62W, 6TH PM
Top of Production: (631' FSL and 10' FWL) Sec 12-5N-62W, 6TH PM
Bottom of Production: (470' FSL and 10' FWL) Sec 1-5N-62W, 6TH PM
Weld County, Colorado

Director Lepore:

Bonanza Creek Energy, Inc. (Bonanza) intends to permit, drill and operate the referenced Niobrara Horizontal Well. As defined by Colorado Oil and Gas Conservation Commission (COGCC) Rule 318A(I).a.(4)D., Bonanza proposes the following wellbore spacing unit:

E/2 E/2 sec 11, W/2 W/2 sec 12, W/2 W/2 sec 1, E/2 E/2 sec 2, T5N-R62W, 6TH PM, Weld County, CO – containing 640 acres more or less

Bonanza is the sole mineral lease holder in the proposed spacing unit, and no mineral owner notifications were required.

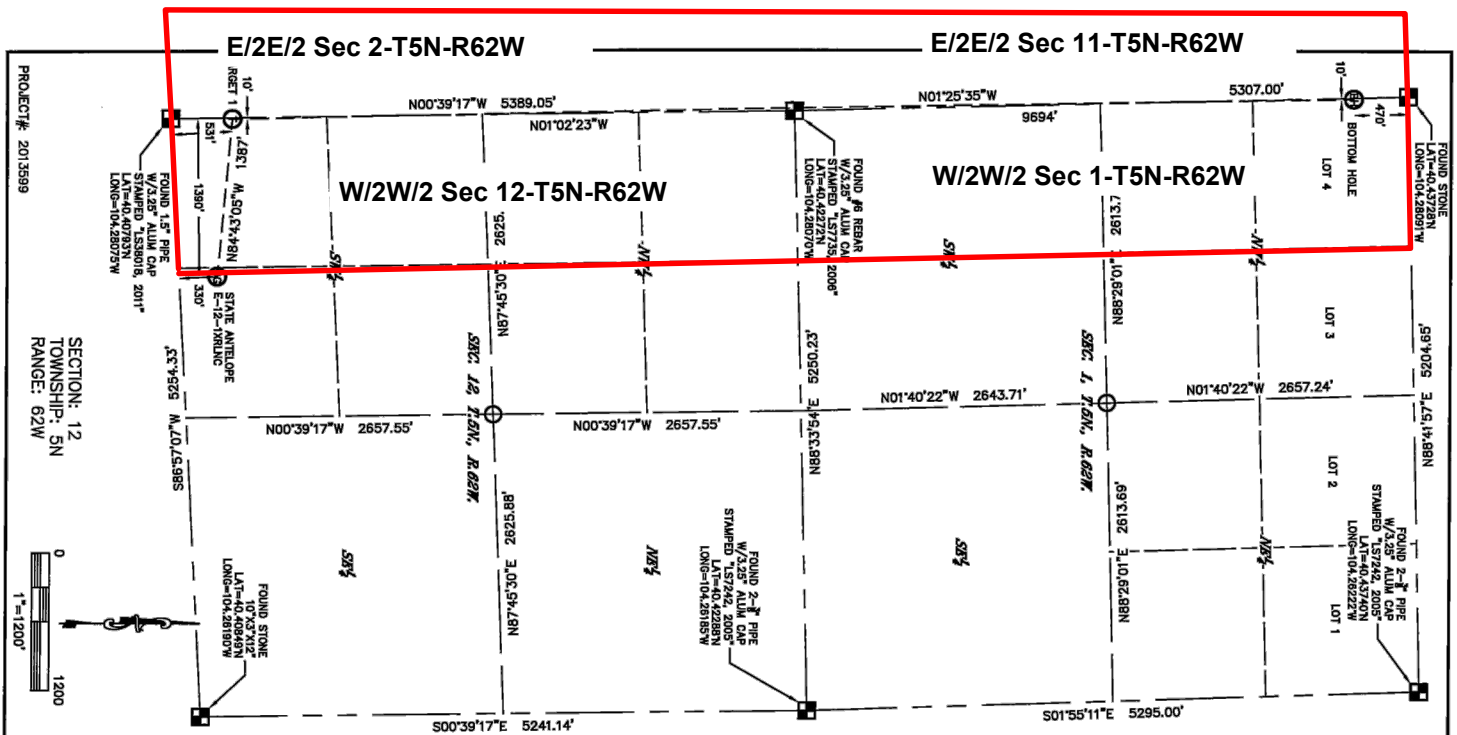
Bonanza respectfully requests that you review the enclosed wellbore spacing unit documentation and approve the referenced APD.

Please do not hesitate to call or email me at (720) 440-6100 or REdelen@Bonanzacrk.com, should you have any questions pertaining to this matter.

Thank you for your cooperation.

Sincerely,

Randy Edelen, P. E.
Regulatory Specialist
BONANZA CREEK ENERGY, INC.
BONANZA CREEK ENERGY OPERATING COMPANY, LLC



KING SURVEYORS 650 E. GARDEN DR. WINDSOR, CO 80550
WELL LOCATION CERTIFICATE-STATE ANTELOPE E-12-1XRLNC

THIS MAP DOES NOT REPRESENT A BOUNDARY SURVEY

In accordance with a request from RANDY EDELEN with BONANZA CREEK ENERGY, INC., King Surveyors has determined the surface location of STATE ANTELOPE E-12-1XRLNC to be 330' from the SOUTH line and 1390' from the WEST line, as measured at right angles, from the section lines of Section 12, and the bottom hole to be 470' from the NORTH line and 10' from the WEST line, as measured at right angles, from the section lines of Section 1, both in Township 5 North, Range 62 West of the Sixth Principal Meridian, County of Weld, State of Colorado.

I hereby state that this Well Location Certificate was prepared by me, or under my direct supervision, that the fieldwork was completed on 10-3-2013, for and on behalf of BONANZA CREEK ENERGY, INC., that this is not a Land Survey Plat or an Improvement Survey Plat, and that it is not to be relied upon for establishment of fence, building, or other future improvement lines.

NOTICE
 According to Colorado law, you must commence any legal action based upon any defect in this W.L.C. within three years after you first discover such defect. In no event, may any action based upon any defect in this survey be commenced more than ten years after the date of the certificate shown hereon. (13-80-105 C.R.S.)

LEGEND

- = FOUND ALIQUOT MONUMENT AS DESCRIBED
- = CALCULATED POSITION

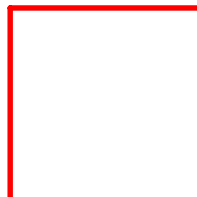
TARGET
 LATITUDE: 40.40939°N
 LONGITUDE: 104.28071°W
 1/4, 1/4: SW₁ SW₁

BOTTOM HOLE
 LATITUDE: 40.43589°N
 LONGITUDE: 104.28086°W
 1/4, 1/4: LOT 4 (SECTION 1)

SURFACE LOCATION
 LATITUDE: 40.40898°N
 LONGITUDE: 104.27575°W
 PDOP: 1.2
 ELEV: 4575'
 1/4, 1/4: SE₁ SW₁
 NEAREST PROPERTY LINE: 330' SOUTH

- NOTES:**
- 1) Bearings shown are Grid Bearings of the Colorado State Plane Coordinate System, North Zone, North American Datum 1983. The lined dimensions as contained herein are based upon the "U.S. Survey Foot."
 - 2) Ground elevations are based on an observed GPS elevation (NAVD 1988 DATUM).
 - 3) IMPROVEMENTS: See LOCATION DRAWING for all visible improvements within 500' of the disturbed area.
 - 4) SURFACE USE: WELL PAD/PASTURE/PRAIRIE
 - 5) INSTRUMENT OPERATOR: AARON LUND

Lawrence S. Pepek - On Behalf of King Surveyors
 Colorado Licensed Professional Land Surveyor #33642



Wellbore Spacing Unit Outline



Wellbore Spacing Unit Map
 03 March 2014 ksc

State Antelope E-12-1XRLNC
 W/2W/2 Sec 12-T5N-R62W 6th PM
 E/2E/2 Sec 11-T5N-R62W 6th PM
 W/2W/2 Sec 1-T5N-R62W 6th PM
 E/2E/2 Sec 2-T5N-R62W 6th PM
 Weld County, Colorado