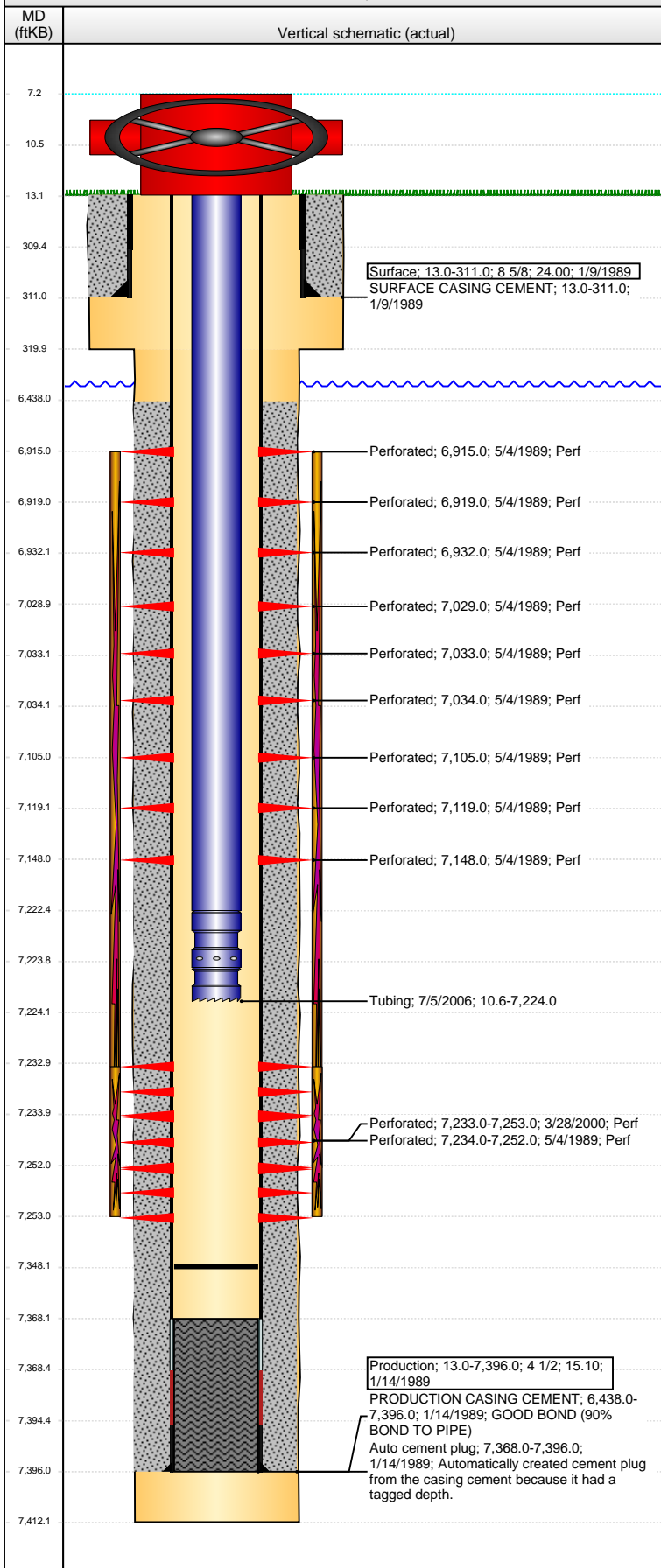


Well Name: EHRLICH PMO12-06

VERTICAL - ORIGINAL HOLE, 3/5/2014 1:41:29 PM



Well Header

API 05-123-14117	Business Unit WATTENBERG	District 15	Well Config VERTICAL
Original KB Elevation (ft) 4,762.00	KB - GL / MSL (ftKB) 13.00	Spud Date 1/9/1989	P & A Date

Comment

Directions To Well

Congressional Location

Quarter 1	Quarter 2	Quarter 3 SE	Quarter 4 NW	Section 12	Township 4 N	Twtnshp N...	Range 67	Rng E/W Dir W
-----------	-----------	-----------------	-----------------	---------------	-----------------	--------------	-------------	------------------

Bottom Hole Location

North-South Distance (ft)	From N or S Line	East-West Distance (ft)	From E or W Line
---------------------------	------------------	-------------------------	------------------

Plug Back Total Depths

Date	Depth (ftKB)	Method	Com
5/2/1989	7,324.0	CASED HOLE LOG	CBL DEPTH LOGGER
3/28/2000	7,368.0	TAG	C/O TO TOP OF FLOAT COLLAR
7/5/2006	7,348.0	TAG	LAST C/O TO PBTD

Wellbore Sections

Section Des	Size (in)	Act Top, MD (ftKB)	Act Btm, MD (ftKB)
SURFACE	12 1/4	13.0	320.0
PRODUCTION	7 7/8	320.0	7,412.0

Zone Statuses

Zone Name	Status Date	Status	Job
NIOBRARA	8/7/2006	PR	TRI-FRAC, 5/31/2006 00:00
CODELL	8/7/2006	PR	TRI-FRAC, 5/31/2006 00:00

Casing Strings

Surface, 311.0ftKB

Casing Description	Run Date	OD (in)	Wt/Len (l...)	Grade	Top, MD (ft...)	MD (ftKB)
Surface	1/9/1989	8 5/8	24.00		13.0	311.0

Production, 7,396.0ftKB

Casing Description	Run Date	OD (in)	Wt/Len (l...)	Grade	Top, MD (ft...)	MD (ftKB)
Production	1/14/1989	4 1/2	15.10		13.0	7,396.0

Cement

Description	Top Depth (ftKB)	Bottom Depth (ftKB)
SURFACE CASING CEMENT	13.0	311.0
PRODUCTION CASING CEMENT	6,438.0	7,396.0

Tubing Components

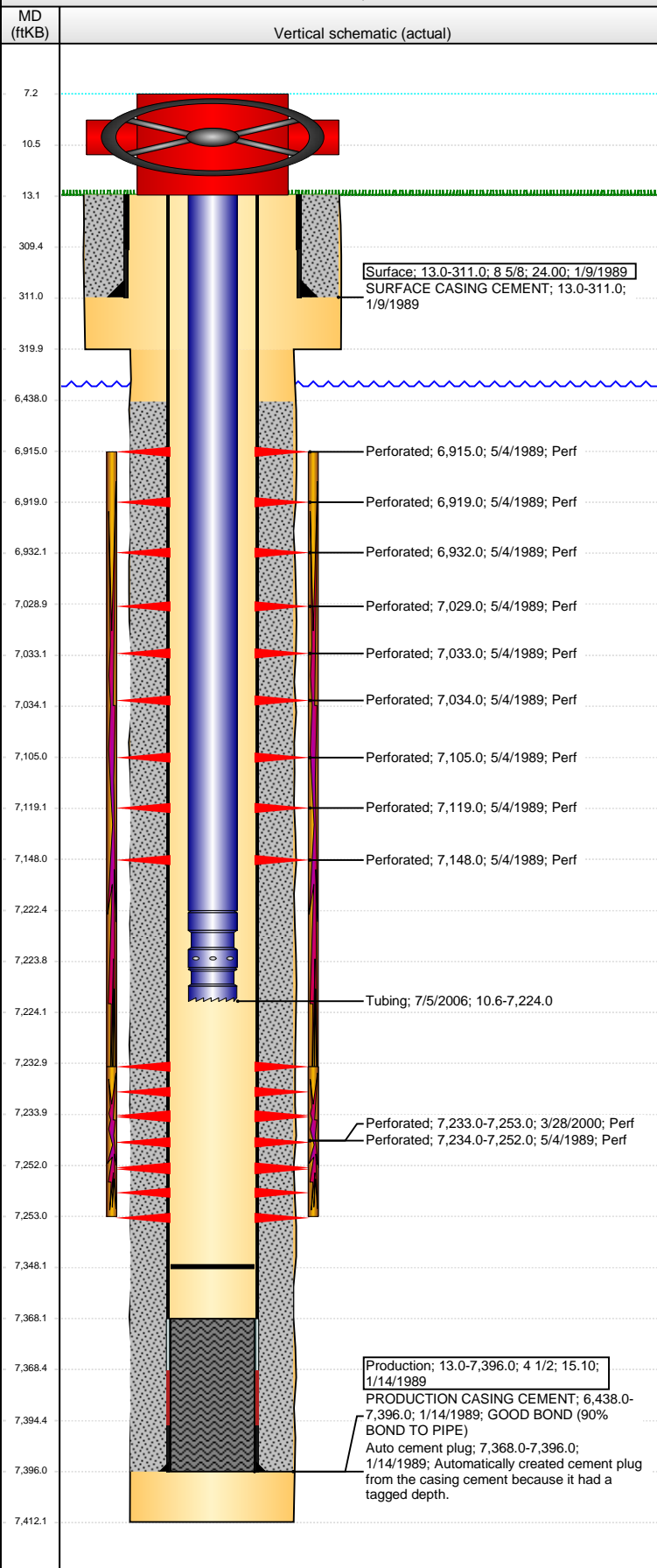
Item Des	OD (in)	Wt (lb/ft)	Grade	Jts	Len (ft)	Btm (ftKB)	Btm (TVD) (ftKB)
EUE 8rd Tubing	2 3/8	4.70	J-55	223	7,211.70	7,222.3	
Seal Nipple	2 3/8			1	1.50	7,223.8	
Notched collar	2 3/8			1	0.20	7,224.0	

Perforation Data

Zone	Bnch/St g	Entered Shot Total	Top (ftKB)	Btm (ftKB)	Date
NIOBRARA, ORIGINAL HOLE	A	1	6,915.00	6,915.00	5/4/1989
NIOBRARA, ORIGINAL HOLE	A	1	6,919.00	6,919.00	5/4/1989
NIOBRARA, ORIGINAL HOLE	A	1	6,932.00	6,932.00	5/4/1989
NIOBRARA, ORIGINAL HOLE	B	1	7,029.00	7,029.00	5/4/1989
NIOBRARA, ORIGINAL HOLE	B	1	7,033.00	7,033.00	5/4/1989
NIOBRARA, ORIGINAL HOLE	B	1	7,034.00	7,034.00	5/4/1989
NIOBRARA, ORIGINAL HOLE	C	1	7,105.00	7,105.00	5/4/1989
NIOBRARA, ORIGINAL HOLE	C	1	7,119.00	7,119.00	5/4/1989
NIOBRARA, ORIGINAL HOLE	C	1	7,148.00	7,148.00	5/4/1989
CODELL, ORIGINAL HOLE		80	7,233.00	7,253.00	3/28/2000
CODELL, ORIGINAL HOLE		10	7,234.00	7,252.00	5/4/1989

Well Name: EHRLICH PMO12-06

VERTICAL - ORIGINAL HOLE, 3/5/2014 1:41:31 PM



Stimulations & Treatments

Date	Zone	Primary Job Type			
5/12/1989	NIORBARA-CODELL, ORIGINAL HOLE	DRILLING/COMPLETION - ORIGINAL			
Technical Result		Tech Result Details		Tech Result Note	
Success		According to Plan			
Comment					
LIMITED ENTRY FRAC					
5, 10, 15 MIN POST FRAC ISDP = 3200 PSI					
Date	Zone	Primary Job Type			
4/10/2000	CODELL, ORIGINAL HOLE	RE-FRAC			
Technical Result		Tech Result Details		Tech Result Note	
Success		According to Plan			
Comment					
CALCULATED 9 PERFS OPEN OUT OF 80, NWB FRICTION = 80 PSI, PERF FRICTION = 549 PSI, LEAKOFF COEF. = 0.000657					
POST FRAC 5 MIN ISIP = 3153					
Date	Zone	Primary Job Type			
6/28/2006	CODELL, ORIGINAL HOLE	TRI-FRAC			
Technical Result		Tech Result Details		Tech Result Note	
Success		According to Plan			
Comment					
POST FRAC 5 MIN ISIP = 2739 PSI					
Other In Hole					
Run Date	Des		OD (in)	Top (ftKB)	Btm (ftKB)
Logs					
Date	Type		Top, MD (ftKB)	Btm, MD (ftKB)	
1/13/1989	COMPENSATED DENSITY		4,230.0	7,410.0	
1/13/1989	INDUCTION		310.0	7,411.0	
5/2/1989	CBL/CCL/GR		6,288.0	7,321.0	