

# KERR-MCGEE OIL & GAS ONSHORE LP

Location: COLORADO Slot: SLOT#02 BADDING 1C-26HZ (350°FSL & 678°FEL, SEC.26)  
Field: WELD COUNTY (KERR MCGEE) Well: BADDING 1C-26HZX  
Facility: SEC.26-T2N-R66W Wellbore: BADDING 1C-26HZX PWB

Plot reference wellpath is BADDING 1C-26HZX (REV-A.0) PWP

True vertical depths are referenced to ENSIGN 138 (13KB) (RKB)	Grid System: NAD83 / Lambert Colorado SP, Northern Zone (501), US feet
Measured depths are referenced to ENSIGN 138 (13KB) (RKB)	North Reference: True north
ENSIGN 138 (13KB) (RKB) to Mean Sea Level: 5128 feet	Scale: True distance
Mean Sea Level to Mud line (At Slot: SLOT#02 BADDING 1C-26HZ (350°FSL & 678°FEL, SEC.26)): 0 feet	Depths are in feet
Coordinates are in feet referenced to Slot	Created by: wilsjef02 on 2/28/2014

## Location Information

Facility Name			Grid East (US ft)	Grid North (US ft)	Latitude	Longitude
SEC.26-T2N-R66W			3213323.933	1281285.671	40°06'10.811"N	104°44'14.587"W
Slot	Local N (ft)	Local E (ft)	Grid East (US ft)	Grid North (US ft)	Latitude	Longitude
SLOT#02 BADDING 1C-26HZ (350°FSL & 678°FEL, SEC.26)	0.00	26.11	3213350.040	1281285.896	40°06'10.811"N	104°44'14.251"W
ENSIGN 138 (13KB) (RKB) to Mud line (At Slot: SLOT#02 BADDING 1C-26HZ (350°FSL & 678°FEL, SEC.26))					5128ft	
Mean Sea Level to Mud line (At Slot: SLOT#02 BADDING 1C-26HZ (350°FSL & 678°FEL, SEC.26))					0ft	
ENSIGN 138 (13KB) (RKB) to Mean Sea Level					5128ft	

## Survey Program

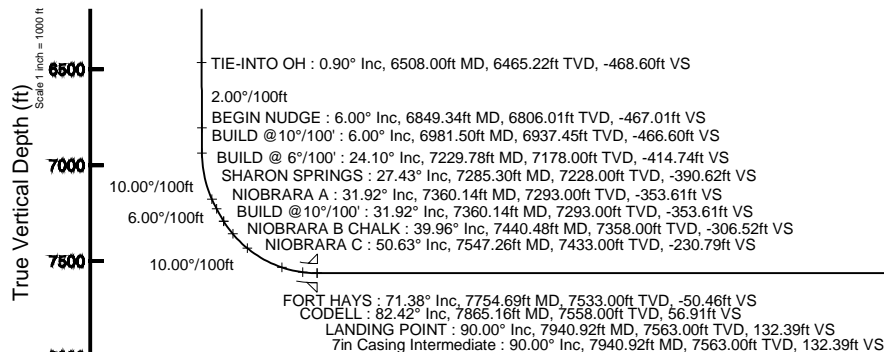
Start MD (ft)	End MD (ft)	Tool	Model	Log Name/Comment	Wellbore
13.00	1227.00	Generic gyro - continuous	Generic gyro - continuous (Standard)		BADDING 1C-26HZ AWB
1227.00	6508.00	NavitTrak	NavitTrak (MAGCORR, IFR)		BADDING 1C-26HZ AWB
6508.00	7940.92	NavitTrak	NavitTrak (MAGCORR, IFR)		BADDING 1C-26HZX PWB
7940.92	12928.31	NavitTrak	NavitTrak (MAGCORR, IFR)		BADDING 1C-26HZX PWB

## Well Profile Data

Design Comment	MD (ft)	Inc (°)	Az (°)	TVD (ft)	Local N (ft)	Local E (ft)	DLS (°/100ft)	VS (ft)
TIE-INTO OH	6508.00	0.90	294.90	6465.22	-470.26	48.70	0.00	-468.60
BEGIN NUDDGE	6849.34	6.00	90.00	6806.01	-469.13	64.13	2.00	-467.01
BUILD @ 10°/100'	6981.50	6.00	90.00	6937.45	-469.13	77.94	0.00	-466.60
BUILD @ 6°/100'	7229.78	24.10	359.656	7178.00	-417.63	90.81	10.00	-414.74
BUILD @ 10°/100'	7360.14	31.92	359.656	7293.00	-356.46	90.45	6.00	-353.61
LANDING POINT	7940.92	90.00	359.656	7563.00	129.85	87.53	10.00	132.39
BEGIN TURN	10950.00	90.00	359.656	7563.00	3138.87	69.46	0.00	3139.55
END TURN	11092.40	90.00	2.504	7563.00	3281.23	72.14	2.00	3281.92
TOTAL DEPTH	12928.31	90.00	2.504	7563.00	5115.39	152.36	0.00	5117.66

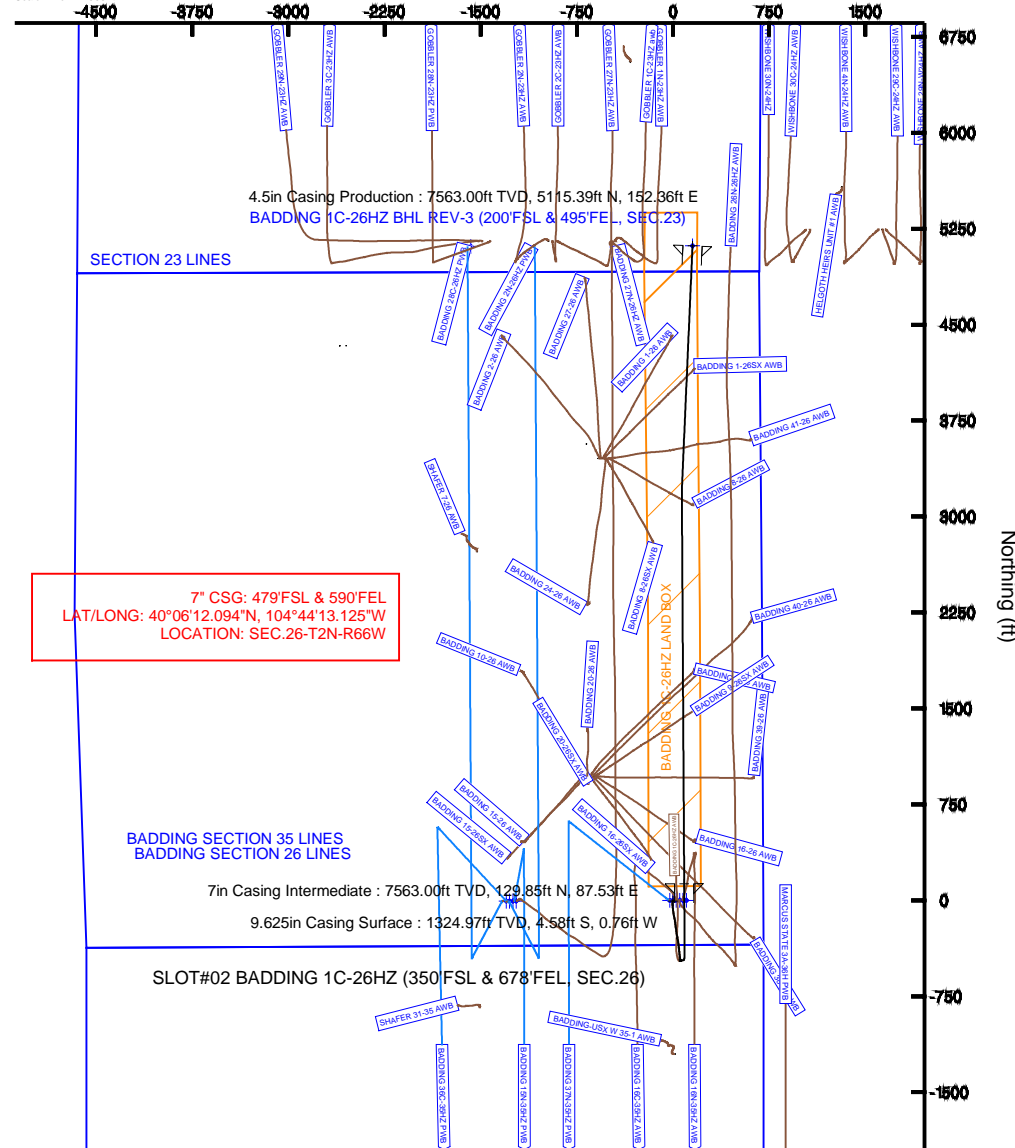
## Targets

Name	MD (ft)	TVD (ft)	Local N (ft)	Local E (ft)	Grid East (US ft)	Grid North (US ft)	Latitude	Longitude
BADDING SECTION 26 LINES		-4.00	0.00	-26.03	3213324.01	1281285.67	40°06'10.811"N	104°44'14.588"W
SECTION 23 LINES		13.00	9904.45	-225.65	3213039.23	1291187.62	40°07'48.688"N	104°44'17.156"W
BADDING 1C-26HZ BHL REV-3 (200°FSL & 495°FEL, SEC.23)	12928.31	7563.00	5115.39	152.36	3213458.39	1286402.19	40°07'01.362"N	104°44'12.290"W
BADDING 1C-26HZ LAND BOX		7566.00	0.00	0.00	3213350.04	1281285.90	40°06'10.811"N	104°44'14.251"W



Scale 1 inch = 1500 ft

Easting (ft)



Azimuth 1.71° with reference 0.00 N, 0.00 E



# Planned Wellpath Report

BADDING 1C-26HZX (REV-A.0) PWP

Page 1 of 5



## REFERENCE WELLPATH IDENTIFICATION

Operator	KERR-MCGEE OIL & GAS ONSHORE LP	Slot	SLOT#02 BADDING 1C-26HZ (350'FSL & 678'FEL, SEC.26)
Area	COLORADO	Well	BADDING 1C-26HZX
Field	WELD COUNTY (KERR MCGEE)	Wellbore	BADDING 1C-26HZX PWB
Facility	SEC.26-T2N-R66W	Sidetrack from	BADDING 1C-26HZ AWB at 6508.00 MD

## REPORT SETUP INFORMATION

Projection System	NAD83 / Lambert Colorado SP, Northern Zone (501), US feet	Software System	WellArchitect® 4.0.0
North Reference	True	User	Wilsjef02
Scale	0.99996	Report Generated	2/28/2014 at 12:45:35
Convergence at slot	n/a	Database/Source file	WellArchitectDB/BADDING_1C-26HZX_PWB.xml

## WELLPATH LOCATION

	Local coordinates		Grid coordinates		Geographic coordinates	
	North[ft]	East[ft]	Easting[US ft]	Northing[US ft]	Latitude	Longitude
Slot Location	0.00	26.11	3213350.04	1281285.90	40°06'10.811"N	104°44'14.251"W
Facility Reference Pt			3213323.93	1281285.67	40°06'10.811"N	104°44'14.587"W
Field Reference Pt			3197771.84	1268891.29	40°04'09.600"N	104°47'36.000"W

## WELLPATH DATUM

Calculation method	Minimum curvature	ENSIGN 138 (13'KB) (RKB) to Facility Vertical Datum	5128.00ft
Horizontal Reference Pt	Slot	ENSIGN 138 (13'KB) (RKB) to Mean Sea Level	5128.00ft
Vertical Reference Pt	ENSIGN 138 (13'KB) (RKB)	ENSIGN 138 (13'KB) (RKB) to Mud Line at Slot (SLOT#02 BADDING 1C-26HZ (350'FSL & 678'FEL, SEC.26))	5128.00ft
MD Reference Pt	ENSIGN 138 (13'KB) (RKB)	Section Origin	N 0.00, E 0.00 ft
Field Vertical Reference	Mean Sea Level	Section Azimuth	1.71°



# Planned Wellpath Report

BADDING 1C-26HZX (REV-A.0) PWP

Page 2 of 5



## REFERENCE WELLPATH IDENTIFICATION

Operator	KERR-MCGEE OIL & GAS ONSHORE LP	Slot	SLOT#02 BADDING 1C-26HZ (350'FSL & 678'FEL, SEC.26)
Area	COLORADO	Well	BADDING 1C-26HZX
Field	WELD COUNTY (KERR MCGEE)	Wellbore	BADDING 1C-26HZX PWB
Facility	SEC.26-T2N-R66W	Sidetrack from	BADDING 1C-26HZ AWB at 6508.00 MD

## WELLPATH DATA (78 stations) † = interpolated/extrapolated station

MD [ft]	Inclination [°]	Azimuth [°]	TVD [ft]	Vert Sect [ft]	North [ft]	East [ft]	Latitude	Longitude	DLS [°/100ft]	Comments
6508.00	0.900	294.900	6465.22	-468.60	-470.26	48.70	40°06'06.164"N	104°44'13.624"W	0.00	TIE-INTO OH
6608.00†	1.211	77.199	6565.22	-468.02	-469.69	49.02	40°06'06.169"N	104°44'13.620"W	2.00	
6708.00†	3.181	87.166	6665.14	-467.54	-469.32	52.82	40°06'06.173"N	104°44'13.571"W	2.00	
6808.00†	5.175	89.490	6764.87	-467.15	-469.14	60.10	40°06'06.175"N	104°44'13.478"W	2.00	
6849.34	6.000	90.000	6806.01	-467.01	-469.13	64.13	40°06'06.175"N	104°44'13.426"W	2.00	BEGIN NUDGE
6908.00†	6.000	90.000	6864.35	-466.83	-469.13	70.26	40°06'06.175"N	104°44'13.347"W	0.00	
6981.50	6.000	90.000	6937.45	-466.60	-469.13	77.94	40°06'06.175"N	104°44'13.248"W	0.00	BUILD @ 10°/100'
7008.00†	5.965	64.368	6963.81	-465.92	-468.53	80.57	40°06'06.181"N	104°44'13.214"W	10.00	
7108.00†	12.653	13.527	7062.57	-452.79	-455.60	87.83	40°06'06.309"N	104°44'13.121"W	10.00	
7208.00†	21.997	1.103	7157.96	-423.26	-426.15	90.76	40°06'06.600"N	104°44'13.083"W	10.00	
7229.78	24.100	359.656	7178.00	-414.74	-417.63	90.81	40°06'06.684"N	104°44'13.082"W	10.00	BUILD @ 6°/100'
7285.30†	27.432	359.656	7228.00	-390.62	-393.50	90.67	40°06'06.922"N	104°44'13.084"W	6.00	SHARON SPRINGS
7308.00†	28.793	359.656	7248.02	-379.93	-382.80	90.60	40°06'07.028"N	104°44'13.085"W	6.00	
7360.14	31.922	359.656	7293.00	-353.61	-356.46	90.45	40°06'07.288"N	104°44'13.087"W	6.00	BUILD @ 10°/100'; NIOBRARA A
7408.00†	36.708	359.656	7332.52	-326.65	-329.48	90.28	40°06'07.555"N	104°44'13.089"W	10.00	
7440.48†	39.957	359.656	7358.00	-306.52	-309.34	90.16	40°06'07.754"N	104°44'13.091"W	10.00	NIOBRARA B CHALK
7508.00†	46.708	359.656	7407.08	-260.24	-263.03	89.89	40°06'08.212"N	104°44'13.094"W	10.00	
7547.26†	50.634	359.656	7433.00	-230.79	-233.56	89.71	40°06'08.503"N	104°44'13.097"W	10.00	NIOBRARA C
7608.00†	56.708	359.656	7468.97	-181.90	-184.65	89.41	40°06'08.986"N	104°44'13.100"W	10.00	
7708.00†	66.708	359.656	7516.31	-94.02	-96.71	88.89	40°06'09.855"N	104°44'13.107"W	10.00	
7754.69†	71.377	359.656	7533.00	-50.46	-53.12	88.62	40°06'10.286"N	104°44'13.110"W	10.00	FORT HAYS
7808.00†	76.708	359.656	7547.65	0.75	-1.88	88.32	40°06'10.792"N	104°44'13.114"W	10.00	
7865.16†	82.425	359.656	7558.00	56.91	54.31	87.98	40°06'11.348"N	104°44'13.119"W	10.00	CODELL
7908.00†	86.708	359.656	7562.06	99.51	96.94	87.72	40°06'11.769"N	104°44'13.122"W	10.00	
7940.92	90.000	359.656	7563.00	132.39	129.85	87.53	40°06'12.094"N	104°44'13.125"W	10.00	LANDING POINT
8008.00†	90.000	359.656	7563.00	199.43	196.92	87.12	40°06'12.757"N	104°44'13.130"W	0.00	
8108.00†	90.000	359.656	7563.00	299.37	296.92	86.52	40°06'13.745"N	104°44'13.138"W	0.00	
8208.00†	90.000	359.656	7563.00	399.30	396.92	85.92	40°06'14.733"N	104°44'13.145"W	0.00	
8308.00†	90.000	359.656	7563.00	499.24	496.92	85.32	40°06'15.722"N	104°44'13.153"W	0.00	
8408.00†	90.000	359.656	7563.00	599.17	596.92	84.72	40°06'16.710"N	104°44'13.161"W	0.00	
8508.00†	90.000	359.656	7563.00	699.11	696.92	84.12	40°06'17.698"N	104°44'13.168"W	0.00	
8608.00†	90.000	359.656	7563.00	799.05	796.91	83.52	40°06'18.686"N	104°44'13.176"W	0.00	
8708.00†	90.000	359.656	7563.00	898.98	896.91	82.92	40°06'19.674"N	104°44'13.184"W	0.00	
8808.00†	90.000	359.656	7563.00	998.92	996.91	82.32	40°06'20.663"N	104°44'13.192"W	0.00	
8908.00†	90.000	359.656	7563.00	1098.85	1096.91	81.72	40°06'21.651"N	104°44'13.199"W	0.00	
9008.00†	90.000	359.656	7563.00	1198.79	1196.91	81.12	40°06'22.639"N	104°44'13.207"W	0.00	
9108.00†	90.000	359.656	7563.00	1298.73	1296.90	80.52	40°06'23.627"N	104°44'13.215"W	0.00	
9208.00†	90.000	359.656	7563.00	1398.66	1396.90	79.92	40°06'24.615"N	104°44'13.222"W	0.00	
9308.00†	90.000	359.656	7563.00	1498.60	1496.90	79.32	40°06'25.604"N	104°44'13.230"W	0.00	
9408.00†	90.000	359.656	7563.00	1598.53	1596.90	78.72	40°06'26.592"N	104°44'13.238"W	0.00	
9508.00†	90.000	359.656	7563.00	1698.47	1696.90	78.12	40°06'27.580"N	104°44'13.246"W	0.00	
9608.00†	90.000	359.656	7563.00	1798.41	1796.90	77.52	40°06'28.568"N	104°44'13.253"W	0.00	
9708.00†	90.000	359.656	7563.00	1898.34	1896.89	76.92	40°06'29.556"N	104°44'13.261"W	0.00	
9808.00†	90.000	359.656	7563.00	1998.28	1996.89	76.32	40°06'30.545"N	104°44'13.269"W	0.00	
9908.00†	90.000	359.656	7563.00	2098.21	2096.89	75.72	40°06'31.533"N	104°44'13.277"W	0.00	



# Planned Wellpath Report

BADDING 1C-26HZX (REV-A.0) PWP

Page 3 of 5



## REFERENCE WELLPATH IDENTIFICATION

Operator	KERR-MCGEE OIL & GAS ONSHORE LP	Slot	SLOT#02 BADDING 1C-26HZ (350'FSL & 678'FEL, SEC.26)
Area	COLORADO	Well	BADDING 1C-26HZX
Field	WELD COUNTY (KERR MCGEE)	Wellbore	BADDING 1C-26HZX PWB
Facility	SEC.26-T2N-R66W	Sidetrack from	BADDING 1C-26HZ AWB at 6508.00 MD

## WELLPATH DATA (78 stations) † = interpolated/extrapolated station

MD [ft]	Inclination [°]	Azimuth [°]	TVD [ft]	Vert Sect [ft]	North [ft]	East [ft]	Latitude	Longitude	DLS [°/100ft]	Comments
10008.00†	90.000	359.656	7563.00	2198.15	2196.89	75.12	40°06'32.521"N	104°44'13.284"W	0.00	
10108.00†	90.000	359.656	7563.00	2298.09	2296.89	74.52	40°06'33.509"N	104°44'13.292"W	0.00	
10208.00†	90.000	359.656	7563.00	2398.02	2396.88	73.92	40°06'34.497"N	104°44'13.300"W	0.00	
10308.00†	90.000	359.656	7563.00	2497.96	2496.88	73.31	40°06'35.486"N	104°44'13.307"W	0.00	
10408.00†	90.000	359.656	7563.00	2597.89	2596.88	72.71	40°06'36.474"N	104°44'13.315"W	0.00	
10508.00†	90.000	359.656	7563.00	2697.83	2696.88	72.11	40°06'37.462"N	104°44'13.323"W	0.00	
10608.00†	90.000	359.656	7563.00	2797.77	2796.88	71.51	40°06'38.450"N	104°44'13.331"W	0.00	
10708.00†	90.000	359.656	7563.00	2897.70	2896.88	70.91	40°06'39.438"N	104°44'13.338"W	0.00	
10808.00†	90.000	359.656	7563.00	2997.64	2996.87	70.31	40°06'40.427"N	104°44'13.346"W	0.00	
10908.00†	90.000	359.656	7563.00	3097.57	3096.87	69.71	40°06'41.415"N	104°44'13.354"W	0.00	
10950.00	90.000	359.656	7563.00	3139.55	3138.87	69.46	40°06'41.830"N	104°44'13.357"W	0.00	BEGIN TURN
11008.00†	90.000	0.816	7563.00	3197.53	3196.87	69.70	40°06'42.403"N	104°44'13.354"W	2.00	
11092.40	90.000	2.504	7563.00	3281.92	3281.23	72.14	40°06'43.237"N	104°44'13.322"W	2.00	END TURN
11108.00†	90.000	2.504	7563.00	3297.52	3296.82	72.83	40°06'43.391"N	104°44'13.314"W	0.00	
11208.00†	90.000	2.504	7563.00	3397.51	3396.72	77.19	40°06'44.378"N	104°44'13.257"W	0.00	
11308.00†	90.000	2.504	7563.00	3497.50	3496.63	81.56	40°06'45.365"N	104°44'13.201"W	0.00	
11408.00†	90.000	2.504	7563.00	3597.49	3596.53	85.93	40°06'46.352"N	104°44'13.145"W	0.00	
11508.00†	90.000	2.504	7563.00	3697.48	3696.43	90.30	40°06'47.340"N	104°44'13.089"W	0.00	
11608.00†	90.000	2.504	7563.00	3797.47	3796.34	94.67	40°06'48.327"N	104°44'13.032"W	0.00	
11708.00†	90.000	2.504	7563.00	3897.47	3896.24	99.04	40°06'49.314"N	104°44'12.976"W	0.00	
11808.00†	90.000	2.504	7563.00	3997.46	3996.15	103.41	40°06'50.301"N	104°44'12.920"W	0.00	
11908.00†	90.000	2.504	7563.00	4097.45	4096.05	107.78	40°06'51.289"N	104°44'12.864"W	0.00	
12008.00†	90.000	2.504	7563.00	4197.44	4195.96	112.15	40°06'52.276"N	104°44'12.808"W	0.00	
12108.00†	90.000	2.504	7563.00	4297.43	4295.86	116.52	40°06'53.263"N	104°44'12.751"W	0.00	
12208.00†	90.000	2.504	7563.00	4397.42	4395.77	120.89	40°06'54.251"N	104°44'12.695"W	0.00	
12308.00†	90.000	2.504	7563.00	4497.41	4495.67	125.26	40°06'55.238"N	104°44'12.639"W	0.00	
12408.00†	90.000	2.504	7563.00	4597.40	4595.58	129.62	40°06'56.225"N	104°44'12.583"W	0.00	
12508.00†	90.000	2.504	7563.00	4697.39	4695.48	133.99	40°06'57.212"N	104°44'12.526"W	0.00	
12608.00†	90.000	2.504	7563.00	4797.38	4795.38	138.36	40°06'58.200"N	104°44'12.470"W	0.00	
12708.00†	90.000	2.504	7563.00	4897.37	4895.29	142.73	40°06'59.187"N	104°44'12.414"W	0.00	
12808.00†	90.000	2.504	7563.00	4997.36	4995.19	147.10	40°07'00.174"N	104°44'12.358"W	0.00	
12908.00†	90.000	2.504	7563.00	5097.35	5095.10	151.47	40°07'01.161"N	104°44'12.301"W	0.00	
12928.31	90.000	2.504	7563.00 <sup>1</sup>	5117.66	5115.39	152.36	40°07'01.362"N	104°44'12.290"W	0.00	TOTAL DEPTH



# Planned Wellpath Report

BADDING 1C-26HZX (REV-A.0) PWP

Page 4 of 5



## REFERENCE WELLPATH IDENTIFICATION

Operator	KERR-MCGEE OIL & GAS ONSHORE LP	Slot	SLOT#02 BADDING 1C-26HZ (350'FSL & 678'FEL, SEC.26)
Area	COLORADO	Well	BADDING 1C-26HZX
Field	WELD COUNTY (KERR MCGEE)	Wellbore	BADDING 1C-26HZX PWB
Facility	SEC.26-T2N-R66W	Sidetrack from	BADDING 1C-26HZ AWB at 6508.00 MD

## HOLE & CASING SECTIONS - Ref Wellbore: BADDING 1C-26HZX PWB Ref Wellpath: BADDING 1C-26HZX (REV-A.0) PWP

String/Diameter	Start MD [ft]	End MD [ft]	Interval [ft]	Start TVD [ft]	End TVD [ft]	Start N/S [ft]	Start E/W [ft]	End N/S [ft]	End E/W [ft]
13.5in Open Hole	13.00	1325.00	1312.00	13.00	1324.97	0.00	0.00	-4.58	-0.76
9.625in Casing Surface	13.00	1325.00	1312.00	13.00	1324.97	0.00	0.00	-4.58	-0.76
8.75in Open Hole	1325.00	6508.00	5183.00	1324.97	6465.22	-4.58	-0.76	-470.26	48.70
8.75in Open Hole	6508.00	7940.92	1432.92	6465.22	7563.00	-470.26	48.70	129.85	87.53
7in Casing Intermediate	13.00	7940.92	7927.92	13.00	7563.00	0.00	0.00	129.85	87.53
6.125in Open Hole	7940.92	12928.31	4987.39	7563.00	7563.00	129.85	87.53	5115.39	152.36
4.5in Casing Production	13.00	12928.31	12915.31	13.00	7563.00	0.00	0.00	5115.39	152.36

## TARGETS

Name	MD [ft]	TVD [ft]	North [ft]	East [ft]	Grid East [US ft]	Grid North [US ft]	Latitude	Longitude	Shape
BADDING SECTION 26 LINES		-4.00	0.00	-26.03	3213324.01	1281285.67	40°06'10.811"N	104°44'14.586"W	polygon
SECTION 23 LINES		13.00	9904.45	-225.65	3213039.23	1291187.62	40°07'48.688"N	104°44'17.156"W	polygon
1) BADDING 1C-26HZ BHL REV-3 (200'FSL & 495'FEL, SEC.23)	12928.31	7563.00	5115.39	152.36	3213458.39	1286402.19	40°07'01.362"N	104°44'12.290"W	point
BADDING 1C-26HZ LAND BOX		7596.00	0.00	0.00	3213350.04	1281285.90	40°06'10.811"N	104°44'14.251"W	polygon

## SURVEY PROGRAM - Ref Wellbore: BADDING 1C-26HZX PWB Ref Wellpath: BADDING 1C-26HZX (REV-A.0) PWP

Start MD [ft]	End MD [ft]	Positional Uncertainty Model	Log Name/Comment	Wellbore
13.00	1227.00	Generic gyro - continuous (Standard)		BADDING 1C-26HZ AWB
1227.00	6508.00	NaviTrak (MAGCORR,IFR)		BADDING 1C-26HZ AWB
6508.00	7940.92	NaviTrak (MAGCORR,IFR)		BADDING 1C-26HZX PWB
7940.92	12928.31	NaviTrak (MAGCORR,IFR)		BADDING 1C-26HZX PWB



# Planned Wellpath Report

BADDING 1C-26HZX (REV-A.0) PWP

Page 5 of 5



## REFERENCE WELLPATH IDENTIFICATION

Operator	KERR-MCGEE OIL & GAS ONSHORE LP	Slot	SLOT#02 BADDING 1C-26HZ (350'FSL & 678'FEL, SEC.26)
Area	COLORADO	Well	BADDING 1C-26HZX
Field	WELD COUNTY (KERR MCGEE)	Wellbore	BADDING 1C-26HZX PWB
Facility	SEC.26-T2N-R66W	Sidetrack from	BADDING 1C-26HZ AWB at 6508.00 MD

## WELLPATH COMMENTS

MD [ft]	Inclination [°]	Azimuth [°]	TVD [ft]	Comment
13.00	0.000	268.030	13.00	TIE-ON
113.00	0.480	268.030	113.00	BEGIN GYRO SURVEYS
1227.00	0.400	199.450	1226.98	TIE-INTO GYRO SURVEYS
1367.00	0.700	255.900	1366.97	BEGIN BHI MWD+IFR SURVEYS
7285.30	27.432	359.656	7228.00	SHARON SPRINGS
7360.14	31.922	359.656	7293.00	NIOBRARA A
7440.48	39.957	359.656	7358.00	NIOBRARA B CHALK
7547.26	50.634	359.656	7433.00	NIOBRARA C
7754.69	71.377	359.656	7533.00	FORT HAYS
7865.16	82.425	359.656	7558.00	CODELL