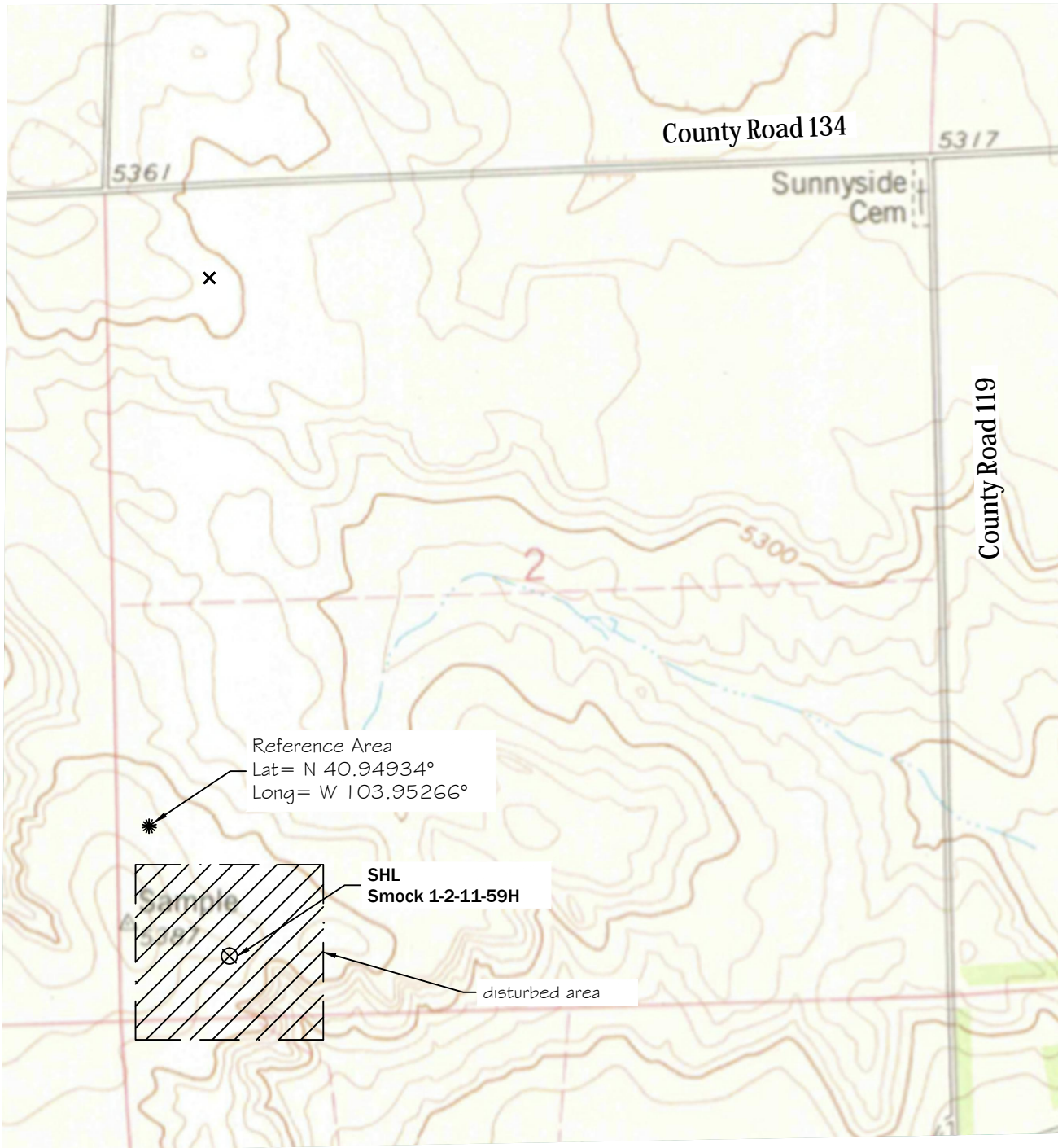


# Reference Map Area



Z:\Project\2013\13070\dwg\13070d007 Smock.dwg February 28, 2014 - 4:03pm

Well Name: <b>Smock 1-2-11-59H</b>	Field Date n/a	Prepared for: <b>Dakota Exploration</b>
Section 2-T11N-R59W-6PM, SW-SW	Party Chief n/a	
Weld County, Colorado	Proj. Manager <b>MBS</b>	PLS Group, LLC 6843 North Franklin Avenue Loveland, Colorado 80538 970.669.2100 office - 970.669.3652 fax
	Drawing Date <b>2/28/2014</b>	