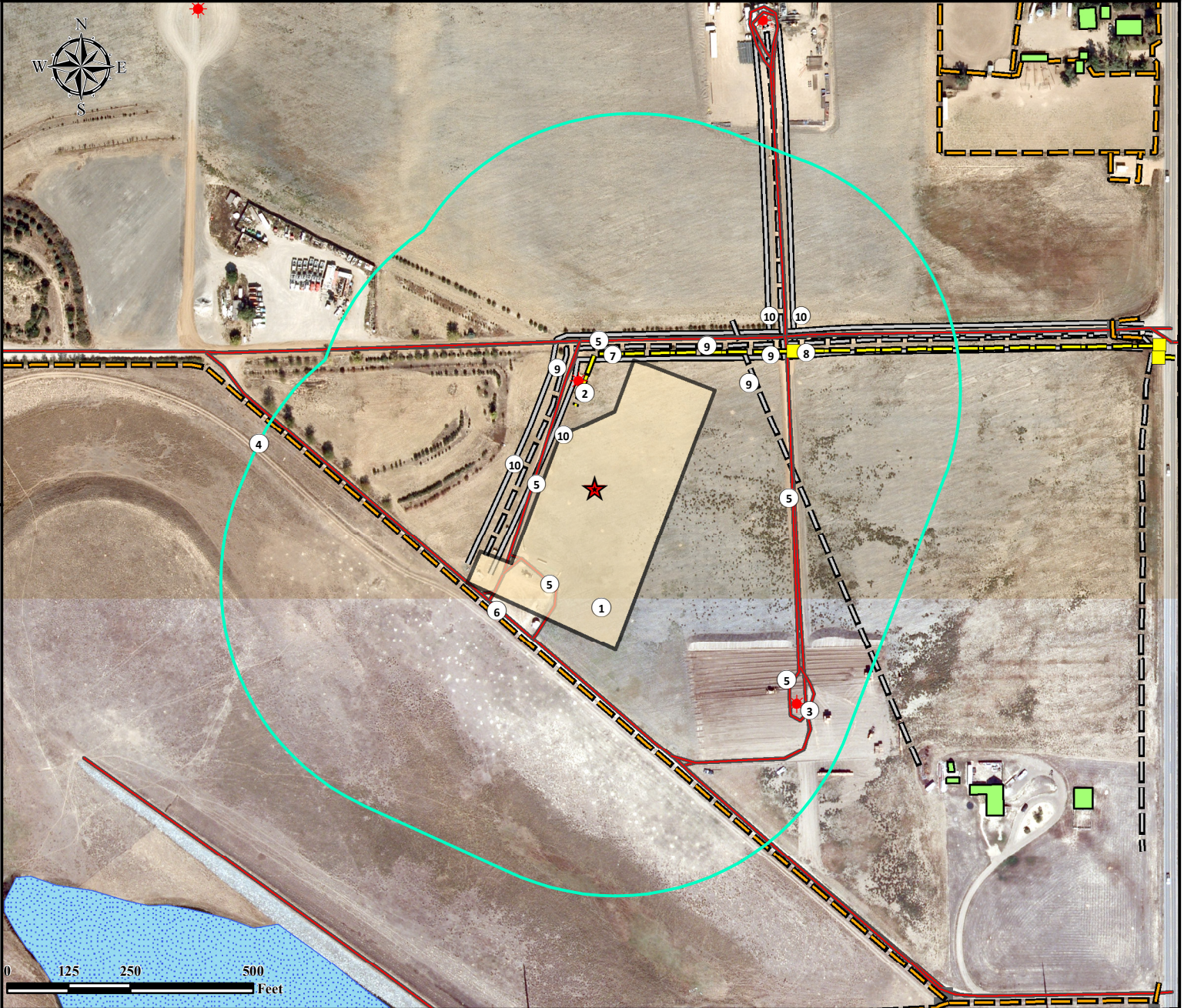


# Location Drawing

## KERBS 32C-14HZ Facility

### Horizontal Multi Well Pad

**SE¼ NE¼ SECTION 13, TOWNSHIP 3 NORTH, RANGE 68 WEST OF THE 6TH PRINCIPAL MERIDIAN**



- |   |  |   |
|---|--|---|
| 1. Proposed Facility KERBS 32C-14HZ.        | 5. Private Roads are ±125' W, ±210' SW, ±298' N, ±400' E and ±568' SE. | 9. Fiber Optics are ±171' NW, ±370' NE, ±453' NE, and ±452' NE. |
| 2. Existing Well UPV 13-8J8 is ±221' NW.    | 6. Fence is ±326' SW.  | 10. ROW's are ±121' NW, ±221' NW, ±429' NE, and ±474' NE.       |
| 3. Existing Well KERBS T 13-08 is ±600' SE. | 7. Powerline is ±181' N.   |   |
| 4. 500' Radius.                             | 8. Electrical Box is ±489' NE.   |   |

|               |               |                        |              |              |
|---------------|---------------|------------------------|--------------|--------------|
| <b>Legend</b> | Existing Well | Proposed facility      | Pipeline     | Fiber Optics |
|               | Power Point   | Building/Building Unit | Private Road | 50' ROW      |
|               | 500' Radius   | Fence                  |              |              |

**Reference Location**  
 \*\* All measurements are made from Reference Point \*\*  
**Lat: 40.229264° Long: -104.945931° (NAD83)**  
**Elevation: 4890 Feet**  
 1600' FNL & 1170' FEL

*Use our resources to find yours!*  
[www.petro-fs.com](http://www.petro-fs.com)  
**(303) 928-7128**

Field Date: 03/19/2013  
 Drafting Date: 12/27/2013  
 Drafter: DRF  
 Revision: 4

Surface Use: Dryland Crop  
 Data Sources:  
 - Aerial courtesy of Anadarko Petroleum Corporation (2010)

Prepared for: Petroleum Corporation  
**KERR-MCGEE OIL & GAS ONSHORE LP**