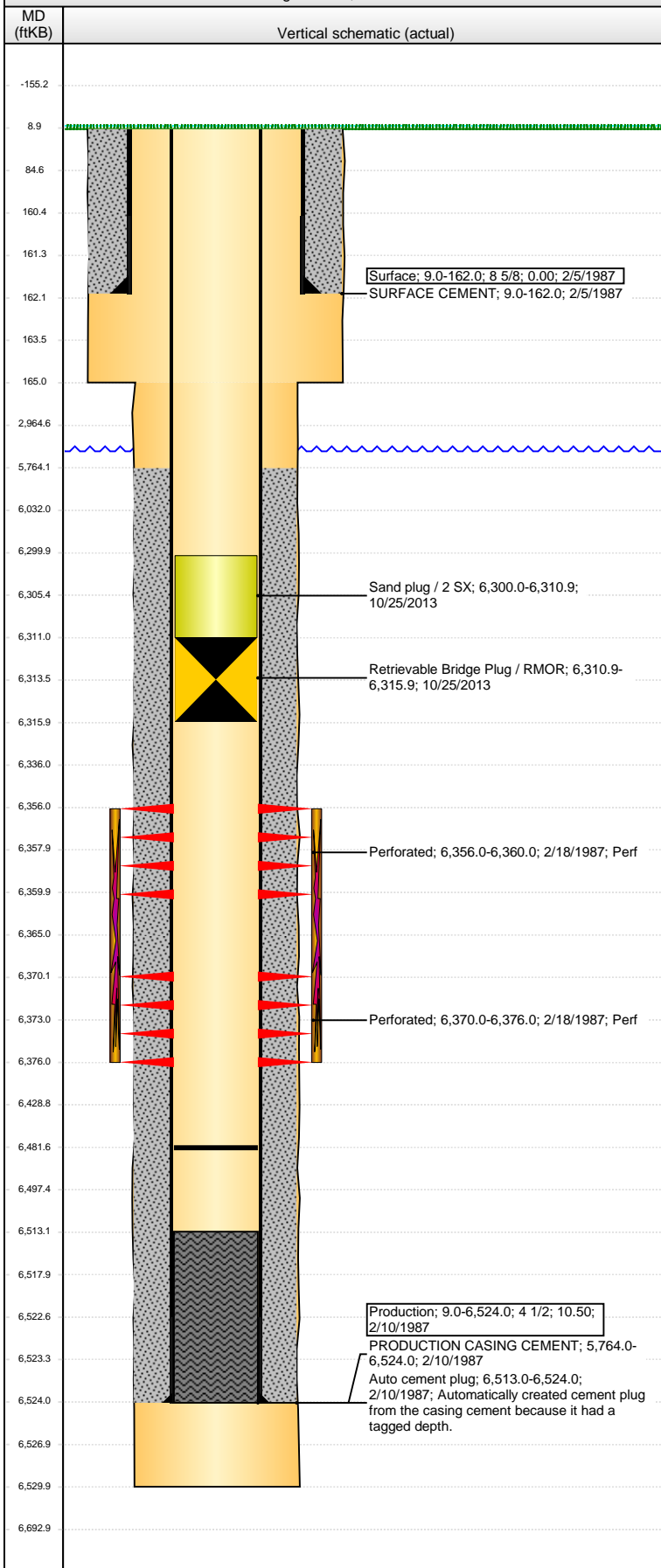


**Well Name: LILLI UNIT 15-5**

VERTICAL - Original Hole, 3/5/2014 8:07:58 AM



Well Header			
API	Business Unit	District	Well Config
05-123-13339	WATTENBERG	25	VERTICAL
Original KB Elevation (ft)	KB - GL / MSL (ftKB)	Spud Date	P & A Date
4,745.00	9.00	2/5/1987	
Comment			
Directions To Well			
NORTH FROM TEXACO STATION IN RAYMER, CO ON WC RD 129 5.2 MILE, WEST 2.2 MILE, NORTH INTO LOCATION			
Congressional Location			
Quarter 1	Quarter 2	Quarter 3	Quarter 4
		SW	SE
Section	Township	Twnshp N...	Range
5	8 N		58 W
Bottom Hole Location			
North-South Distance (ft)	From N or S Line	East-West Distance (ft)	From E or W Line
Plug Back Total Depths			
Date	Depth (ftKB)	Method	Com
2/13/1987	6,496.0	CASED HOLE LOG	DEPTH LOGGER ON CBL
10/24/2013	6,481.7	TAG	TBG TALLY MEASUREMENT.
Wellbore Sections			
Section Des	Size (in)	Act Top, MD (ftKB)	Act Btm, MD (ftKB)
SURFACE	12 1/4	9.0	165.0
PRODUCTION	7 7/8	165.0	6,530.0
Zone Statuses			
Zone Name	Status Date	Status	Job
D SAND	5/8/1987	PR	DRILLING/COMPLETION - ORIGINAL, 2/5/1987 06:00
Casing Strings			
Surface, 162.0ftKB			
Casing Description	Run Date	OD (in)	W/Len (L...)
Surface	2/5/1987	8 5/8	
Grade	Top, MD (ft...)	MD (ftKB)	
	9.0	162.0	
Production, 6,524.0ftKB			
Casing Description	Run Date	OD (in)	W/Len (L...)
Production	2/10/1987	4 1/2	10.50
Grade	Top, MD (ft...)	MD (ftKB)	
	9.0	6,524.0	
Cement			
Description	Top Depth (ftKB)	Bottom Depth (ftKB)	
SURFACE CEMENT	9.0	162.0	
Description	Top Depth (ftKB)	Bottom Depth (ftKB)	
PRODUCTION CASING CEMENT	5,764.0	6,524.0	
Tubing Components			
Item Des	OD (in)	Wt (lb/ft)	Grade
Perforation Data			
Zone	Bnch/St g	Entered Shot Total	Top (ftKB)
D SAND, Original Hole		9	6,356.00
D SAND, Original Hole		13	6,370.00
			Btm (ftKB)
			2/18/1987
			2/18/1987
Stimulations & Treatments			
Date	Zone	Primary Job Type	
2/20/1987	D SAND, Original Hole	DRILLING/COMPLETION - ORIGINAL	
Technical Result	Tech Result Details	Tech Result Note	
Comment			
Other In Hole			
Run Date	Des	OD (in)	Top (ftKB)
10/25/2013	Retrievable Bridge Plug / RMOR	3.99	6,310.9
			Btm (ftKB)
			6,315.9
10/25/2013	Sand plug / 2 SX	3.99	6,300.0
			6,310.9
Logs			
Date	Type	Top, MD (ftKB)	Btm, MD (ftKB)
2/9/1987	COMPENSATED DENSITY	5,500.0	6,525.0
2/9/1987	GAMMA RAY	5,500.0	6,493.0
2/9/1987	INDUCTION	155.0	6,522.0
2/13/1987	CBL/CCL/GR	5,620.0	6,490.0