

T10N, R58W, 6th P.M.

WHITING OIL & GAS CORP.

2012 UELS Alum.
Cap 0.3' High
Lat: 40.860544°
Long: 103.842372°

2012 UELS Alum.
Cap 0.3' High
Lat: 40.860597°
Long: 103.832833°

2012 UELS Alum. Cap.
#28285, 0.3' High
Lat: 40.860647°
Long: 103.823292°

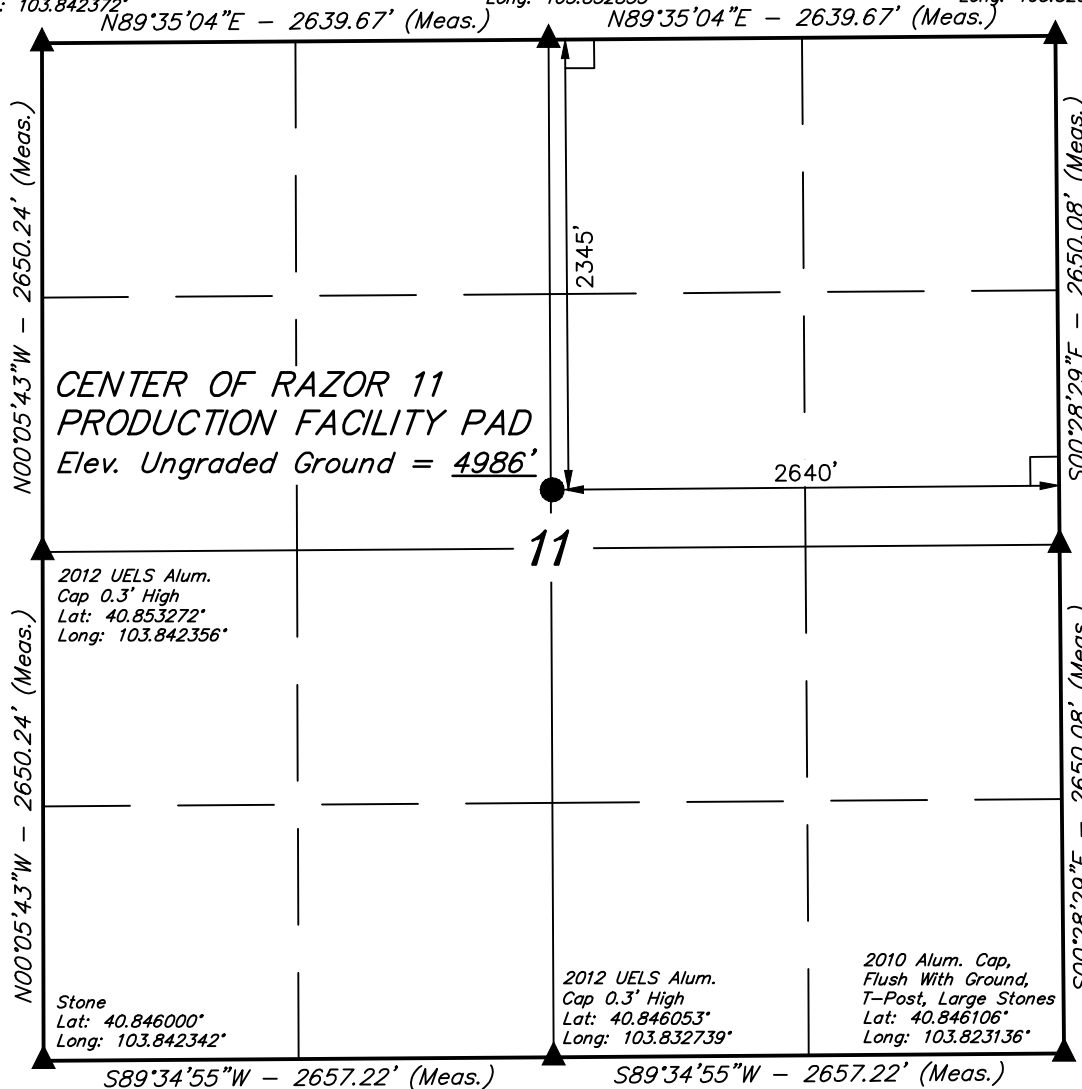
Production Facility Location, CENTER OF RAZOR 11 PRODUCTION FACILITY PAD, located as shown in the SW 1/4 NE 1/4 of Section 11, T10N, R58W, 6th P.M., Weld County, Colorado.

BASIS OF ELEVATION

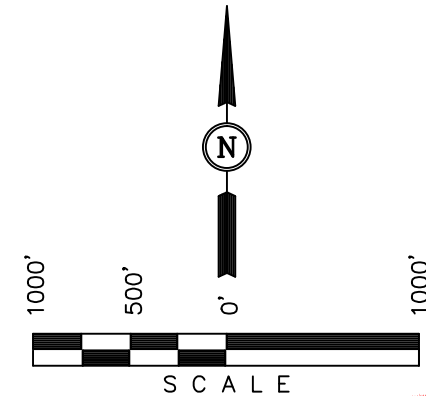
SPOT ELEVATION LOCATED AT THE NORTHEAST CORNER OF SECTION 15, T9N, R58W, 6th P.M. TAKEN FROM THE GATEHOOK SPRING, QUADRANGLE, COLORADO, WELD COUNTY, 7.5 MINUTE QUAD (TOPOGRAPHIC MAP) PUBLISHED BY THE UNITED STATES DEPARTMENT OF THE INTERIOR, GEOLOGICAL SURVEY. SAID ELEVATION IS MARKED AS BEING 4679 FEET.

BASIS OF BEARINGS

BASIS OF BEARINGS IS A G.P.S. OBSERVATION.



2012 UELS Alum. Cap.
#28285, 0.3' High
Lat: 40.853375°
Long: 103.823214°



CERTIFICATION

THIS IS TO CERTIFY THAT THE ABOVE PLAT WAS PREPARED FROM FIELD NOTES OF ACTUAL SURVEYS MADE BY ME OR UNDER MY SUPERVISION AND THAT THE SAME ARE TRUE AND CORRECT TO THE BEST OF MY KNOWLEDGE AND BELIEF.

REGISTERED LAND SURVEYOR
REGISTRATION NO. 28285
STATE OF COLORADO 02-19-14

LEGEND:

- └─┘ = 90° SYMBOL
- = CENTER OF PRODUCTION FACILITY PAD.
- ▲ = SECTION CORNERS LOCATED.

PDOP = 1.6

NAD 83 (CENTER OF RAZOR 11 PRODUCTION FACILITY PAD)	
LATITUDE	= 40°51'14.99" (40.854164)
LONGITUDE	= 103°49'57.96" (103.832767)
NAD 27 (CENTER OF RAZOR 11 PRODUCTION FACILITY PAD)	
LATITUDE	= 40°51'15.04" (40.854178)
LONGITUDE	= 103°49'56.15" (103.832264)

UINTAH ENGINEERING & LAND SURVEYING
85 SOUTH 200 EAST - VERNAL, UTAH 84078
(435) 789-1017

SCALE 1" = 1000'	DATE SURVEYED: 02-19-14	DATE DRAWN: 02-20-14
PARTY ZANE BULLARD N.J. H.K.W.	REFERENCES G.L.O. PLAT	
WEATHER COLD	FILE WHITING OIL & GAS CORP.	