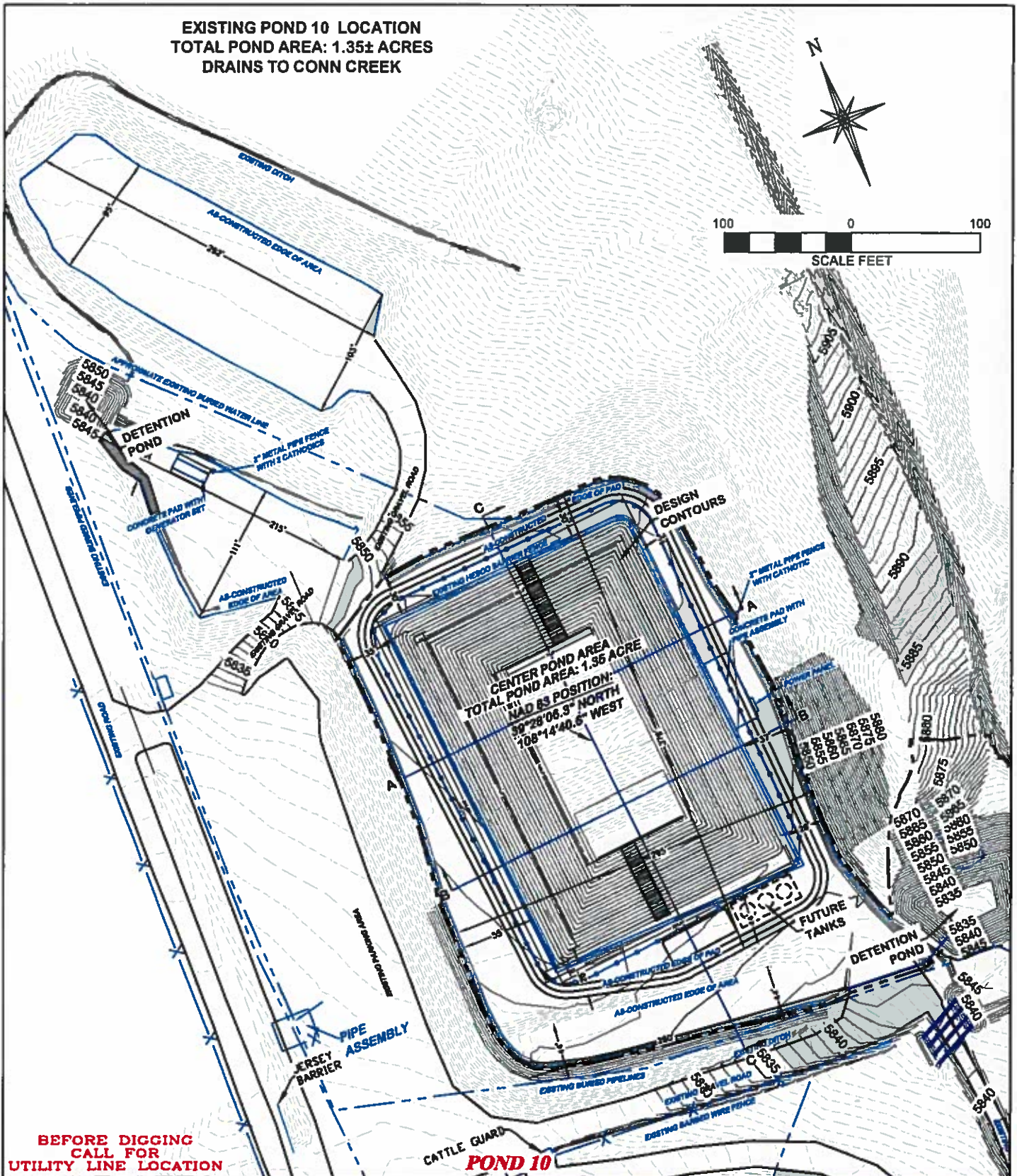


EXISTING POND 10 LOCATION
TOTAL POND AREA: 1.35± ACRES
DRAINS TO CONN CREEK



BEFORE DIGGING
CALL FOR
UTILITY LINE LOCATION

POND 10

CONSTRUCTION LAYOUT DRAWING 1 OF 2



RIFFIN & ASSOCIATES, INC.

(307) 362-5028

1414 ELK ST., ROCK SPRINGS, WY 82901

DRAWN: 2/4/2014 - RAS

SCALE: 1" = 100'

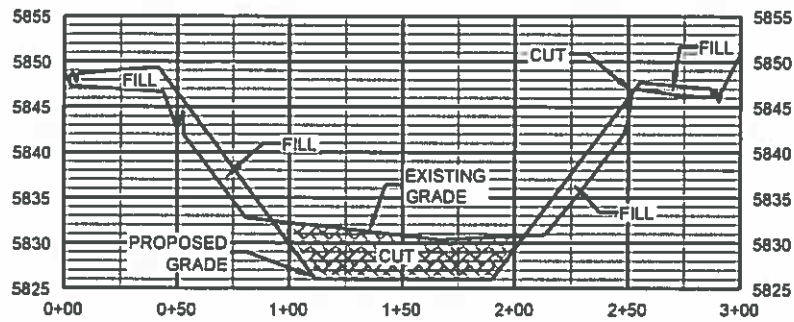
REVISED: 2/25/2014 - RAS

DRG JOB No. 20347

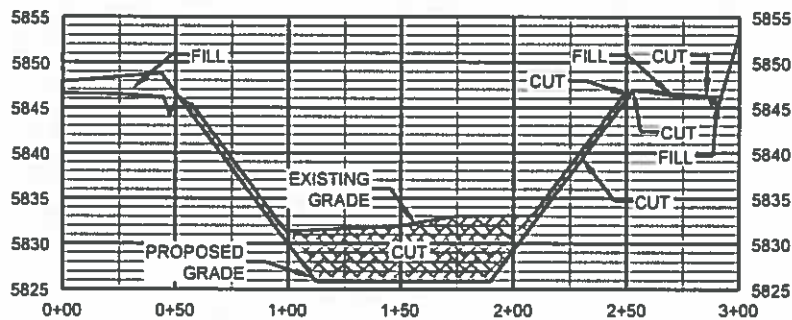
MISC. REVISIONS

EXHIBIT 2

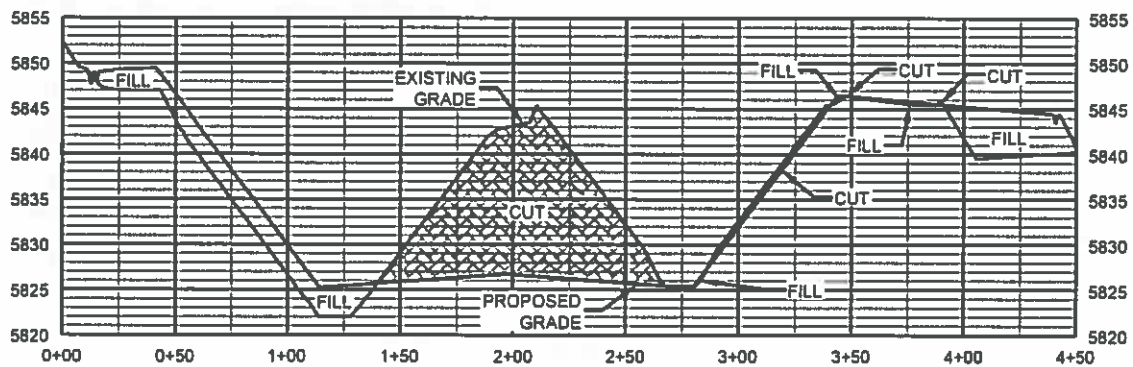
**OXY USA, WTP LP
POND 10
TRACT 83-B, IN SECTION 5, T. 7 S.,
R. 97 W., 6th P.M.,
GARFIELD COUNTY, COLORADO**



A



B



C

POND 10

CONSTRUCTION LAYOUT DRAWING 2 OF 2



RIFFIN & ASSOCIATES, INC.

(307) 362-6028

1414 ELK ST., ROCK SPRINGS, WY 82901

DRAWN: 2/4/2014 - RAS

SCALE: HORZ 1" = 80' VERT 1" = 20'

REVISED: N/A -

DRG JOB No. 20347

EXHIBIT 3

OXY USA, WTP LP

POND 10

TRACT 83-B, IN SECTION 5, T. 7 S.,

R. 97 W., 6th P.M.,

GARFIELD COUNTY, COLORADO