

**ANADARKO PETROLEUM CORP - EBUS
DO NOT MAIL - PO BOX 4995
THE WOODLANDS, Texas**

Wagner 13C-3HZ

Majors 42

Post Job Summary **Cement Surface Casing**

Prepared for:
Date Prepared: 1/22/2014
Version: 1

Service Supervisor: PICKELL, CHRISTOPHER

Submitted by: FINNEY, SEAN

HALLIBURTON

HALLIBURTON

Wellbore Geometry

Job Tubulars					MD		Shoe Joint Length ft
Type	Description	Size in	ID in	Wt lbm/ft	Top ft	Bottom ft	
Casing	9 5/8" Surface Casing	9.63	8.921	36.00	0.00	1,047.09	40.70
Open Hole Section	13 1/2" Open Hole Section		13.500		0.00	1,071.00	0.00

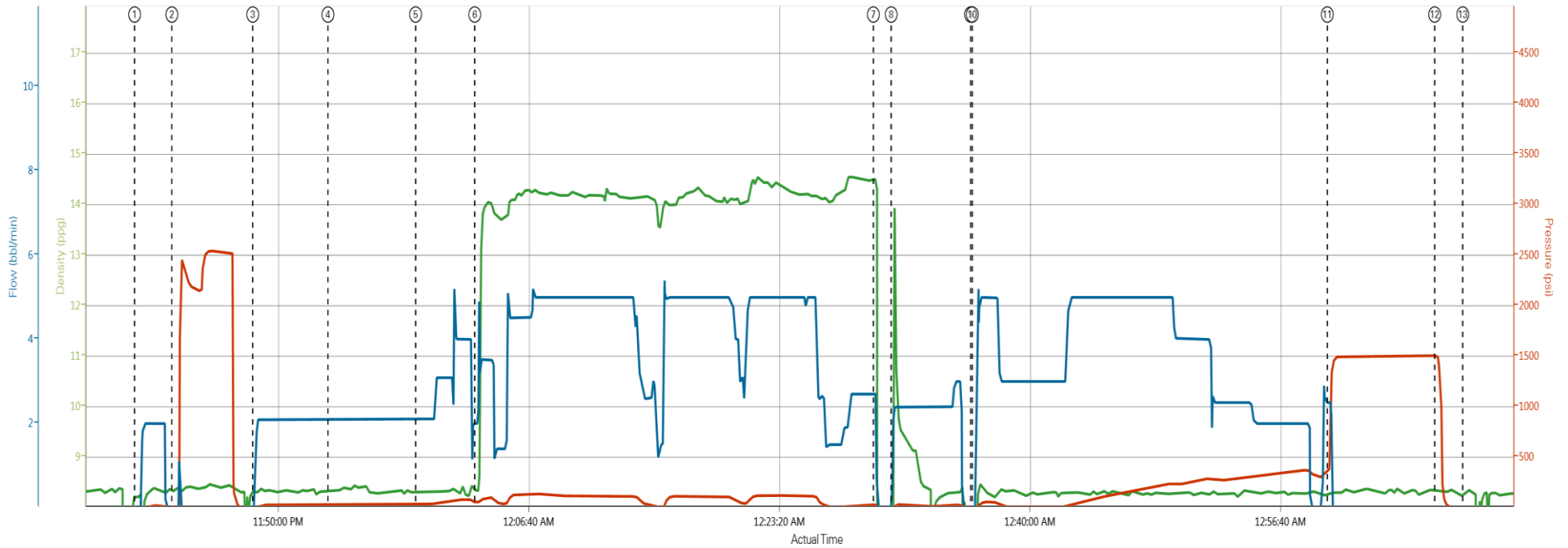
HALLIBURTON

Pumping Schedule

Stage /Plug #	Fluid #	Fluid Type	Fluid Name	Surface Density lbm/gal	Avg Rate bbl/min	Surface Volume	Downhole Volume
1	1	Spacer	Fresh Water Spacer	8.33	2.00	10.0 bbl	10.0 bbl
1	2	Spacer	Mud Flush	8.40	2.00	12.0 bbl	12.0 bbl
1	1	Spacer	Fresh Water Spacer	8.33	2.50	10.0 bbl	10.0 bbl
1	3	Cement Slurry	SwiftCem B2	14.20	5.00	402.0 sacks	402.0 sacks

Data Acquisition

WAGNER 13C-3HZ



DH Density (ppg) PS Pump Press (psi) Comb Pump Rate (bbbl/min)

- ① Start Job 8:2;-9,0 ④ Pump Mudflush 8:37;30;2,1 ⑦ Shutdown 14:53;30;2,7 ⑩ Pump Displacement 0:08;-9,0 ⑬ End Job 8:28;-3,0
- ② Test Lines 8:37;4;0 ⑤ Pump Water 8:31;36;2,1 ⑧ Clean Lines 10:06;0;2,1 ⑫ Bump Plug 8:26;383;2,5
- ③ Pump Water 8:36;-3,0 ⑥ Pump Swiftcem 14:2#8:33;52,2 ⑨ Drop Top Plug 0:05;-8,0 ⑭ Check Floats 8:35;1506,0

HALLIBURTON

Service Supervisor Reports

Job Log

Date/Time	Chart #	Activity Code	Pump Rate	Cum Vol	Pump	Pressure (psig)	Comments
11/02/2013 08:30		Call Out					CREW CALLED OUT AT 0830 TO BE ON LOCATION AT 1300. CREW WAS PICKELL, JEWELL, SIMMONS. ON LOCATION TIME WAS PUSHED BACK TO 1700
11/02/2013 16:30		Depart from Service Center or Other Site					SAFETY MEETING HELD FOR JOURNEY TO LOCATION THEN LEFT THE YARD FOR MAJOR 42
11/02/2013 17:00		Arrive At Loc					ARRIVE AT LOCATION AT 1700. RIG STILL TRIPPING DRILL PIPE TO RUN CASING. RIG FINISHED RUNNING CASING AT 2315
11/02/2013 17:15		Rig-Up Equipment					CONTAINMENT IN PLACE FROM RAIN FOR RENT. SPOT IN TRUCKS AND RIG UP ALL EQUIPMENT TO THE RIG. HAD TO WAIT FOR CASING TO BE RUN TO FINISH. FINISHED RIGGING UP AT 2325
11/02/2013 23:25		Pre-Job Safety Meeting					SAFETY MEETING WITH ALL PERSONEL ON LOCATION TO DISCUSS JOB SAFETY AND PROCEDURE
11/02/2013 23:40		Start Job					QUICK LATCH PLUG CONTAINER USED FOR JOB
11/02/2013 23:43		Test Lines	1	3		2500.0	PRESSURE TEST LINES TO 2500 PSI. CHECK FOR VISIBLE LEAKS AND PRESSURE LOSS
11/02/2013 23:48		Pump Spacer 1	2	10		50.0	PUMP WATER. RETURNS BEGAN WITH 1.5 BBL AWAY
11/02/2013 23:53		Pump Spacer 2	2	12		60.0	PUMP MUDFLUSH
11/02/2013 23:59		Pump Spacer 1	2.5	10		65.0	PUMP WATER
11/03/2013 00:03		Pump Cement	5	110.3		160.0	PUMP SWIFTCM CEMENT 402 SKS 14.2 PPG 1.54 CUFT/SK 7.67 GAL/SK
11/03/2013 00:29		Shutdown					
11/03/2013 00:30		Clean Lines					WASH PUMPS AND LINES TO WASH UP TANK
11/03/2013 00:36		Drop Top Plug					PLUG PRELOADED. WITNESSED BY COMPANY MAN
11/03/2013 00:36		Pump Displacement	5	80.1		400.0	PUMP DISPLACEMENT USING WATER. CALCULATED DISPLACEMENT WAS 77.7 BBL
11/03/2013 00:59		Bump Plug	2.5			383.0	CALCUALTED PRESSURE TO LAND WAS 313. PLUG LANDED WITH 383 PSI GOING 1000 PSI OVER
11/03/2013 01:07		Check Floats				1506.0	PRESSURE WAS HELD FOR 5 MINUTES THEN RELEASED. FLOATS HELD. 1/2 BBL BACK TO TANKS
11/03/2013 01:08		End Job					5 BBL OF CEMENT BACK TO SURFACE
11/03/2013 01:10		Pre-Rig Down Safety Meeting					SAFETY MEETING HELD FOR RIG DOWN
11/03/2013 01:15		Rig-Down Equipment					BLOW OUT ALL LINES. RIG DOWN ALL EQUIPMENT. NO SPILLS
11/03/2013 02:00		Depart Location for Service Center or Other Site					LEAVE LOCATION FOR ANOTHER JOB

The Road to Excellence Starts with Safety

Sold To #: 300466		Ship To #: 3195699		Quote #:		Sales Order #: 900866629	
Customer: ANADARKO PETROLEUM CORP - EBUS				Customer Rep: Hersh, Larry			
Well Name: Wagner			Well #: 13C-3HZ		API/UWI #: 05-123-38351		
Field: WATTENBERG		City (SAP): PLATTEVILLE		County/Parish: Weld		State: Colorado	
Lat: N 40.012 deg. OR N 40 deg. 0 min. 44.978 secs.				Long: W 104.884 deg. OR W -105 deg. 6 min. 57.434 secs.			
Contractor: Majors			Rig/Platform Name/Num: Majors 42				
Job Purpose: Cement Surface Casing							
Well Type: Development Well				Job Type: Cement Surface Casing			
Sales Person: FLING, MATTHEW			Srvc Supervisor: PICKELL, CHRISTOPHER			MBU ID Emp #: 396838	

Job Personnel

HES Emp Name	Exp Hrs	Emp #	HES Emp Name	Exp Hrs	Emp #	HES Emp Name	Exp Hrs	Emp #
JEWELL, WILLIAM Uris	0.0	503358	PICKELL, CHRISTOPHER Lee	0.0	396838	SIMMONS, KEATON J	0.0	524850

Equipment

HES Unit #	Distance-1 way	HES Unit #	Distance-1 way	HES Unit #	Distance-1 way	HES Unit #	Distance-1 way
10679720C	7 mile	11338223	7 mile	11605597	7 mile	11667703C	7 mile

Job Hours

Date	On Location Hours	Operating Hours	Date	On Location Hours	Operating Hours	Date	On Location Hours	Operating Hours

TOTAL *Total is the sum of each column separately*

Job

Job Times

Formation Name	Formation Depth (MD) Top	Bottom	Form Type	Job depth MD	Job Depth TVD	Water Depth	Wk Ht Above Floor	Perforation Depth (MD) From	To	Called Out	Date	Time	Time Zone
	1071. ft		BHST	1071. ft	1046. ft		5. ft			02 - Nov - 2013	08:30	MST	
										02 - Nov - 2013	17:00	MST	
										02 - Nov - 2013	23:40	MST	
										03 - Nov - 2013	01:08	MST	
										03 - Nov - 2013	02:00	MST	

Well Data

Description	New / Used	Max pressure psig	Size in	ID in	Weight lbm/ft	Thread	Grade	Top MD ft	Bottom MD ft	Top TVD ft	Bottom TVD ft
13 1/2" Open Hole Section				13.5				.	1071.		
9 5/8" Surface Casing	Unknown		9.625	8.921	36.		J-55	.	1047.1		

Sales/Rental/3rd Party (HES)

Description	Qty	Qty uom	Depth	Supplier
CMT CASING EQUIPMENT BOM	1	JOB		
MILEAGE FOR CEMENTING CREW,ZI	20	MI		
ZI FUEL SURCHG-CARS/PICKUPS<1 1/2TON	20	MI		
KIT,HALL WELD-A	1	EA		
CNTRLZR, 9 5/8"x13 3/4',#500-0963-1375	7	EA		
Description	Qty	Qty uom	Depth	Supplier

BASKET - CEMENT - 9-5/8 CSG X 12-1/4					1	EA			
PLUG,CMTG, TOP, 9 5/8, HWE, 8.16 MIN/9.06 MA					1	EA			
COLLAR-STOP-9 5/8"-FRICTION-HINGED					2	EA			
Fluid Data									
Stage/Plug #: 1									
Fluid #	Stage Type	Fluid Name	Qty	Qty uom	Mixing Density lbm/gal	Yield ft ³ /sk	Mix Fluid Gal/sk	Rate bbl/min	Total Mix Fluid Gal/sk
1	Fresh Water Spacer		10.00	bbl	8.33			2.0	
2	Mud Flush		12.00	bbl	8.4			2.0	
3.5 lbm/bbl		MUD FLUSH III, 40 LB SACK (101633304)							
42 gal/bbl		MUD FLUSH III - SBM (528788)							
1	Fresh Water Spacer		10.00	bbl	8.33			2.5	
3	SwiftCem B2	SWIFTCEM (TM) SYSTEM (452990)	402.0	sacks	14.2	1.53	7.63	5.0	7.63
7.63 Gal		FRESH WATER							
Calculated Values			Pressures			Volumes			
Displacement		Shut In: Instant		Lost Returns		Cement Slurry		Pad	
Top Of Cement		5 Min		Cement Returns		Actual Displacement 80.1		Treatment	
Frac Gradient		15 Min		Spacers		Load and Breakdown		Total Job	
Rates									
Circulating			Mixing			Displacement			Avg. Job
Cement Left In Pipe		Amount	40.7 ft	Reason	Shoe Joint				
Frac Ring # 1 @	ID	Frac ring # 2 @	ID	Frac Ring # 3 @	ID	Frac Ring # 4 @	ID		
The Information Stated Herein Is Correct				Customer Representative Signature					

