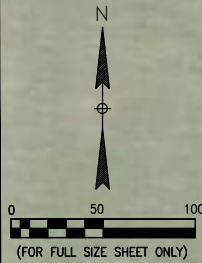


NRC Tank Battery 1C-8HZ Facility Layout Drawing



PROPOSED NRC
1C- 8HZ FACILITY

EASTERN LINE OF
SECTION 8 T1N, R67W

WESTERN LINE OF THE
SE¼ SECTION 8 T1N, R67W

SOUTHERN LINE OF
SECTION 8 T1N, R67W

NOTE:
OFFSET DISTANCE TO EDGE OF
RESIDENCE/ BUILDING UNIT FROM
DISTURBANCE AREA

565'

AREA PLAN
SCALE: AS NOTED

NOTES:
1. EQUIPMENT PLACEMENT IS APPROXIMATE AND SUBJECT TO MINOR MODIFICATION DUE TO SITE SPECIFIC CIRCUMSTANCES.

| REFERENCE DRAWINGS | | | REVISIONS | | | | | |
|--------------------|---|-----|-------------------|-----|----------|------|----------|------------|
| | | | | | | | | |
| | | | | | | | | |
| | | | | | | | | |
| | | | | | | | | |
| NRC-GA-101 | NRC 1C-8HZ - PLOT PLAN WITH EQUIPMENT LOCATIONS | | ISSUED FOR PERMIT | MAK | 02/27/14 | MPC | 02/27/14 | |
| DWG. NO. | TITLE | NO. | DESCRIPTION | BY | DATE | CHK. | DATE | APPR. DATE |



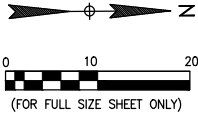
PIPELINE STRATEGIES & INTEGRITY

GREATER WATTENBERG AREA
NRC 1 C - 8 HZ
AREA PLAN

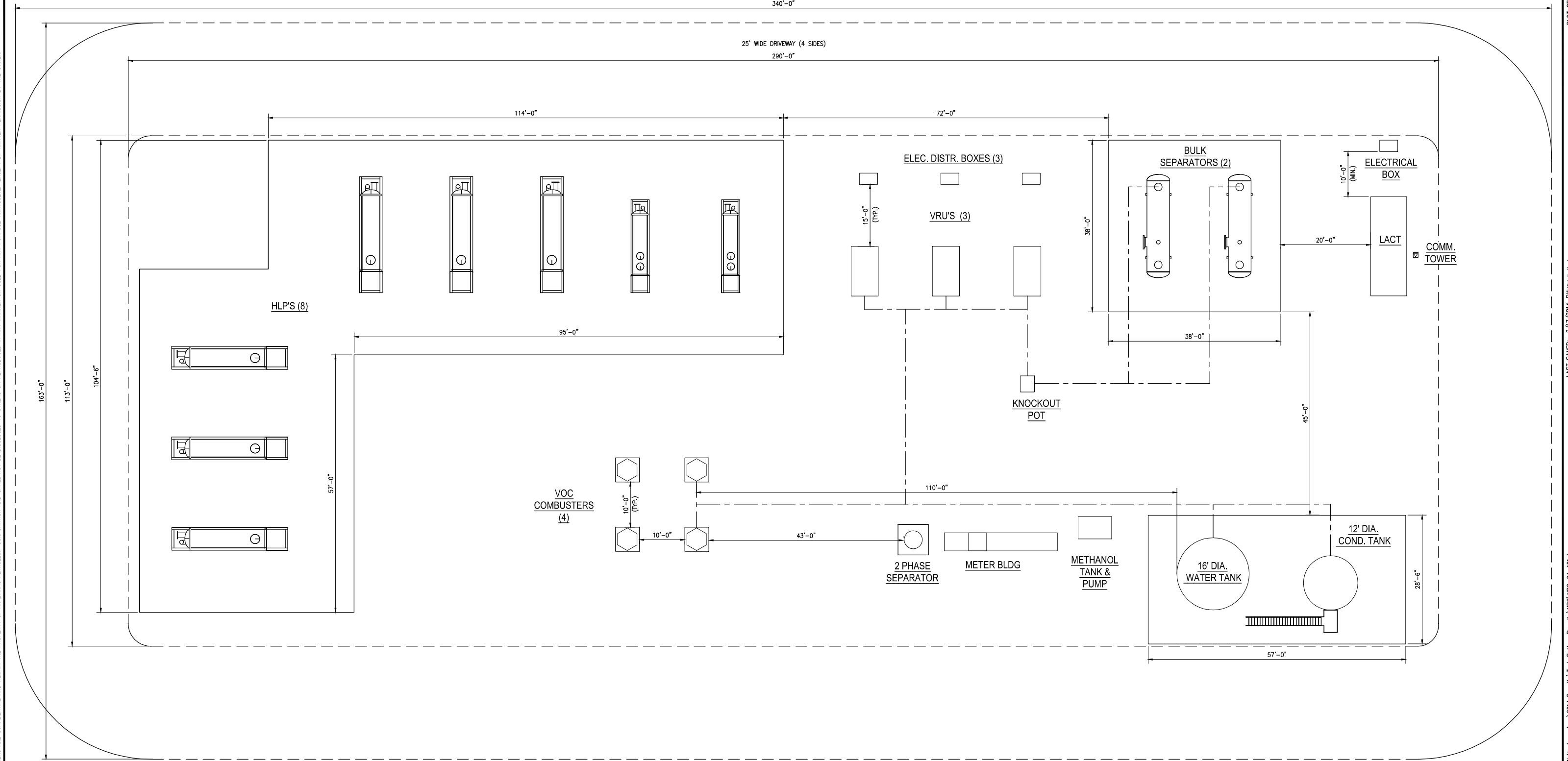
| | | |
|----------------------------|-------------------------|----------|
| DRAWN BY: MAK | CREATION DATE: 02/13/14 | AFE No.: |
| APPROVED: | APPR. DATE: | |
| DWG. No.: | NRC-GA-100 | |
| SCALE: 1"= 50' (FULL SIZE) | SHEET No. 1 OF 1 | |

THIS DRAWING AND THE DESIGN IT COVERS ARE CONFIDENTIAL AND REMAIN THE PROPERTY OF ANADARKO PETROLEUM CORPORATION AND SHALL NOT BE DISCLOSED TO OTHERS OR REPRODUCED IN ANY MANNER OR USED FOR ANY PURPOSE WHATSOEVER EXCEPT BY WRITTEN PERMISSION BY THE OWNER.

FILE LOCATION: P:\Engineering\Projects\Anadarko\Greater Wattenberg Area\2014 Permits\Tank Battery Permits\NRC\NRC-GA-100.dwg
LAST SAVED: 2/27/2014 BY: Michelle Koudem
PLOT STYLE: Anadarko Plot111.dwt



THIS DRAWING AND THE DESIGN IT COVERS ARE CONFIDENTIAL AND REMAIN THE PROPERTY OF ANADARKO PETROLEUM CORPORATION AND SHALL NOT BE DISCLOSED TO OTHERS OR REPRODUCED IN ANY MANNER OR USED FOR ANY PURPOSE WHATSOEVER EXCEPT BY WRITTEN PERMISSION BY THE OWNER.



PLOT PLAN
SCALE AS NOTED

- LEGEND**
- DRIVEWAY
 - - - ABOVE GRADE PIPE

NOTES:
1. EQUIPMENT PLACEMENT IS APPROXIMATE AND SUBJECT TO MINOR MODIFICATION DUE TO SITE SPECIFIC CIRCUMSTANCES.

| REFERENCE DRAWINGS | | REVISIONS | | | | | |
|--------------------|------------------------|-----------|-------------------|-----|----------|------|----------|
| | | | | | | | |
| | | | | | | | |
| | | | | | | | |
| | | | | | | | |
| NRC-GA-100 | NRC 1C-8HZ - AREA PLAN | △ | ISSUED FOR PERMIT | MAK | 02/27/14 | MPC | 02/27/14 |
| DWG. NO. | TITLE | NO. | DESCRIPTION | BY | DATE | CHK. | DATE |



PIPELINE STRATEGIES & INTEGRITY

| GREATER WATTENBERG AREA | | | |
|------------------------------------|-------------------------|------------------|---|
| NRC 1 C - 8 HZ | | | |
| PLOT PLAN WITH EQUIPMENT LOCATIONS | | | |
| DRAWN BY: MAK | CREATION DATE: 02/13/14 | AFE No.: | |
| APPROVED: | APPR. DATE: | DWG. No.: | |
| SCALE: 1"= 10' (FULL SIZE) | | NRC-GA-101 | |
| | | SHEET No. 1 OF 1 | △ |