



Chevron
U.S.A., Inc.

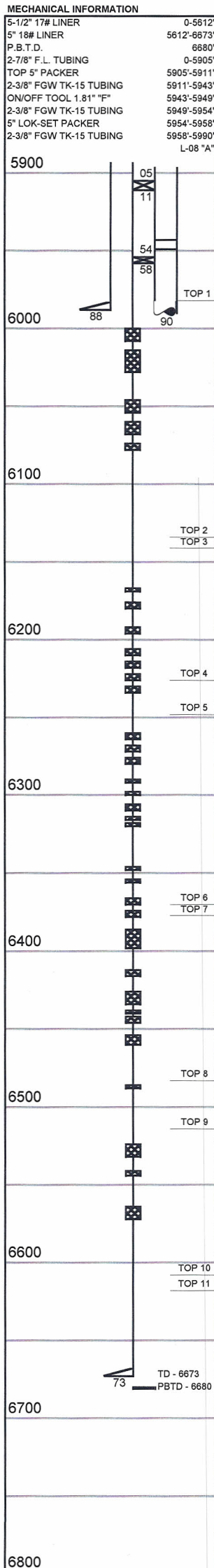
WELL NO.: EMERALD 9ST
(1623)
FIELD : RANGELY, CO.

SURVEY DATA

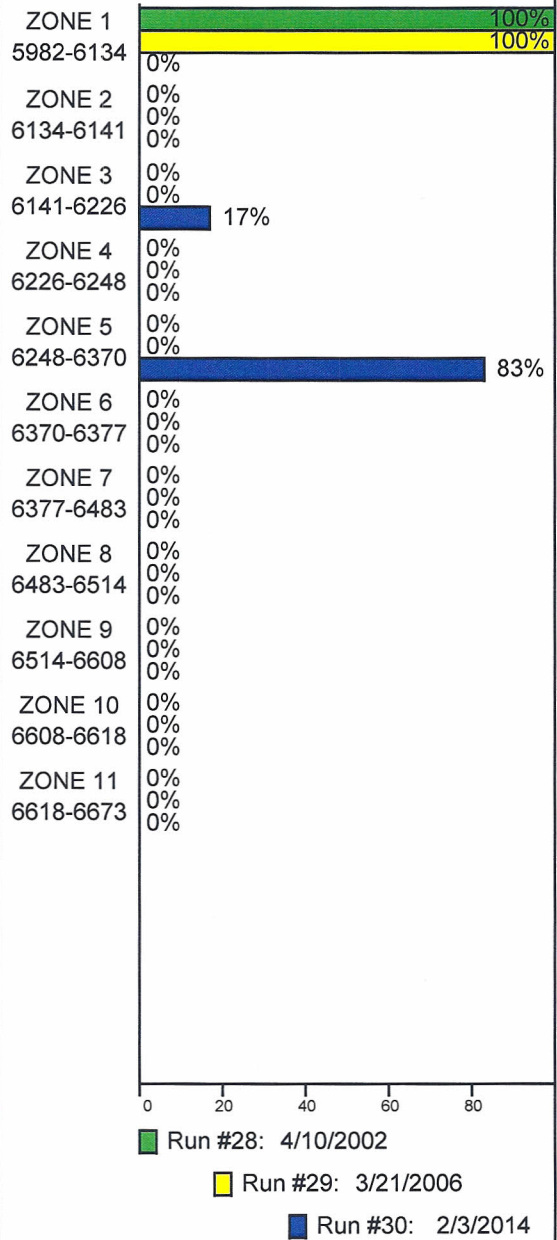
REMARKS

RUN NO. 30		
SURVEY TYPE : T-S-T	SURFACE TEMP. : 105.2 F	R/A TRACER INDICATES TOP PERF AND PACKERS OK. RECORDED BY: R. ANDREWS 03/10/06, RAN 1.75" GAUGE RING TO 6096'. UNABLE TO WORK DEEPER.
DATE : 2/3/2014	BHT : 158.1 F	
METERED RATE : 900 B/D	TBG PRESSURE : 850 PSI	
MEASURED RATE: 630 B/D	CSG PRESSURE : 0 PSI	
DESIRED RATE : N/A	PICK-UP : 6650'	
SERVICE CO. : PLS	INJ. FLUID : H2O	

INJECTION PROFILE



PERCENTAGE INJECTED INTO ZONE



TEMPERATURES (F°)

DATE	RUN #28 4/10/2002	RUN #29 3/21/2006	RUN #30 2/3/2014
SURFACE	99.0	104.6	105.2
5982-6134	---	---	---
6134-6141	---	---	---
6141-6226	---	---	---
6226-6248	---	---	---
6248-6370	---	---	---
6370-6377	---	---	---
6377-6483	---	---	---
6483-6514	---	---	---
6514-6608	---	---	---
6608-6618	---	---	---
6618-6673	---	---	---
TDL (6650)	117.9	114.0	158.1
RATE (B/D)	2600	2375	630
PRESS (PSI)	1500	1380	850