



# CEMENT BOND LOG

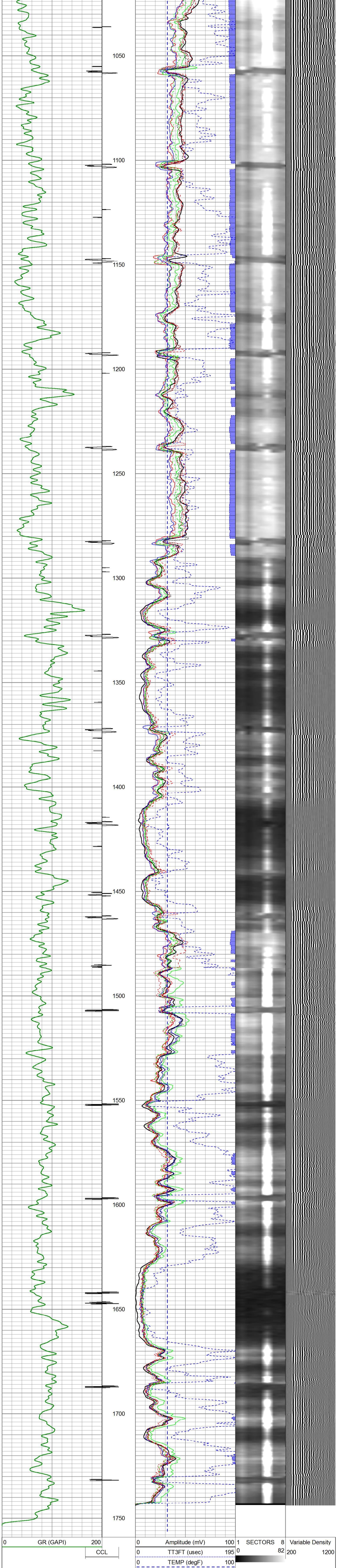
<b>Company</b>	WPX ENERGY
<b>Well</b>	PATTERSON SG 433-27
<b>Field</b>	GRAND VALLEY
<b>County</b>	GARFIELD
<b>State</b>	COLORADO
<b>Location:</b>	API # - 05-045-21020-0000
<b>Other Services</b>	NONE
<b>Permanent Datum</b>	SEC 27 TWP 7S RGE 98W
<b>Log Measured From</b>	GROUND LEVEL Elevation 5012
<b>Drilling Measured From</b>	KELLY BUSHING = 28 FT
<b>Drilling Measured From</b>	KELLY BUSHING
<b>Date</b>	27 FEB 2014
<b>Run Number</b>	ONE
<b>Depth Diller</b>	1754
<b>Bottom Logged Interval</b>	1754
<b>Open Hole Size</b>	1000"
<b>Type Fluid</b>	WATER
<b>Density / Viscosity</b>	7.875
<b>Max Recorded Temp</b>	-8.33 LBS/ GAL
<b>Estimated Cement Top</b>	NA/OG
<b>Time Well Head on Bottom</b>	SEE LOG
<b>Time Logged on Bottom</b>	12:30
<b>Equipment Number</b>	WT 054
<b>Location</b>	GRAND LINGCTON
<b>Recorded By</b>	M. BERNATCHEZ
<b>Witnessed By</b>	J. BRADY

All interpretations are opinions based on inferences from electrical or other measurements and we cannot and do not guarantee the accuracy or correctness of any interpretation, and we shall not, except in the case of gross or willful negligence on our part, be liable or responsible for any loss, costs, damages, or expenses incurred or sustained by anyone resulting from any interpretation made by any of our officers, agents or employees. These interpretations are also subject to our general terms and conditions set out in our current Price Schedule.

Comments

LOG CORRELATED TO BAKER LOG DATED 02/MAY/2012.

Database File: sg 433-27.db  
 Dataset Pathname: pass23  
 Presentation Format: rbt\_fin  
 Dataset Creation: Thu Feb 27 13:14:36 2014  
 Charted by: Depth in Feet scaled 1:240



0 GR (GAPI) 200 CCL 0 Amplitude (mV) 100 1 SECTORS 8 Variable Density 0 TT3FT (usec) 195 0 200 1200 0 TEMP (degF) 100

Sensor	Offset (ft)	Schematic	Description	Len (ft)	OD (in)	Wt (lb)
CCL	21.68		TITAN	1.02	1.44	1.00
			SNDX_CCL-SNDX_3_13_CCL (000001) CSS Gamma Ray/CCL (CCL Section)	1.92	3.13	11.02
			SONDEX	2.71	2.75	32.00
WVFS	13.92		SNDX_RBT-007 (000001) Radiat Bond Tool - Analog 3 1/8	9.47	3.13	140.00
			SONDEX	2.71	2.75	32.00
			GR	5.17		
			SNDX_GR-SNDX_3_13_GR (000002) Sondex Production Gamma Ray	2.94	3.13	22.05
			TEMP	0.58		
			TEMP-SNDX_TEMP (SNDX_TEMP_02) Sondex Production Temperature Tool	3.14	1.63	10.00
			WVFS3FT	13.92		
			WVFS4	13.92		
WVFS5	13.92					
WVFS6	13.92					
WVFS7	13.92					
WVFS8	13.92					
WVFS5FT	12.92					

Dataset: sg 433-27.db; field/well/run1/pass2  
 Total Length: 23.90 ft  
 Total Weight: 248.07 lb  
 O.D.: 3.13 in

<b>Company</b>	WPX ENERGY
<b>Well</b>	PATTERSON SG 433-27
<b>Field</b>	GRAND VALLEY
<b>County</b>	GARFIELD
<b>State</b>	COLORADO

