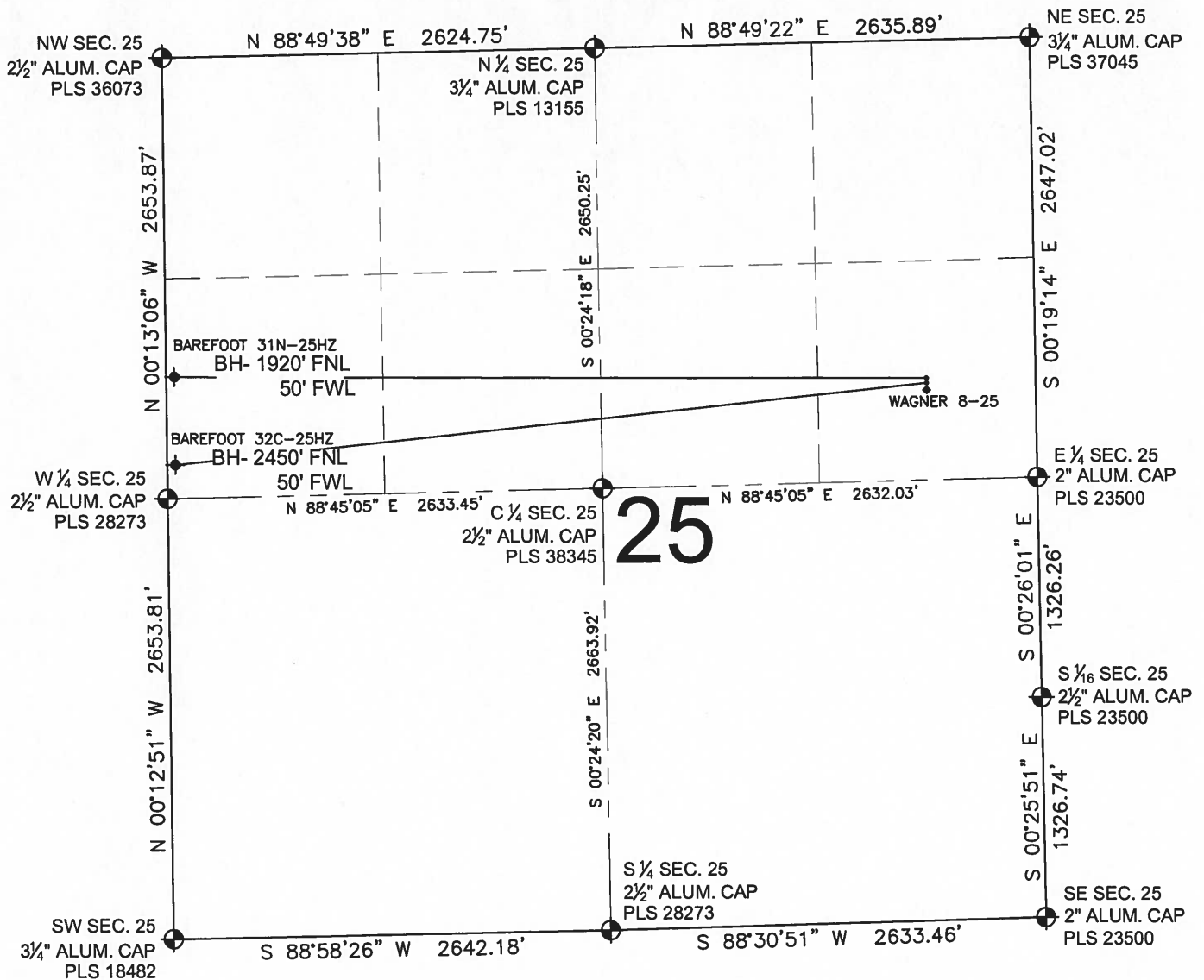


BAREFOOT 32C-25HZ MULTI-WELL PLAN

SECTION 25, TOWNSHIP 3 NORTH, RANGE 68 WEST, 6TH P.M.



LEGEND

- = EXISTING MONUMENT
- = PROPOSED WELL
- ⬮ = BOTTOM HOLE
- ◆ = EXISTING WELL
- BH = BOTTOM HOLE

NOTES:

BAREFOOT 32C-25HZ TO BE AT 2062' FNL, 663' FEL.
BOTTOM HOLE AT 2450' FNL & 50' FWL
BAREFOOT 31N-25HZ TO BE AT 2033' FNL, 663' FEL.
BOTTOM HOLE AT 1920' FNL & 50' FWL
WAGNER 8-25 IS 2092' FNL, 663' FEL.

PREPARED BY:



KERR-MCGEE OIL & GAS ONSHORE LP

FIELD DATE:
10-14-13

DRAWING DATE:
10-31-13

SURFACE LOCATION:

SE 1/4, NE 1/4, SEC. 25, T3N, R68W, 6TH P.M.
WELD COUNTY, COLORADO

