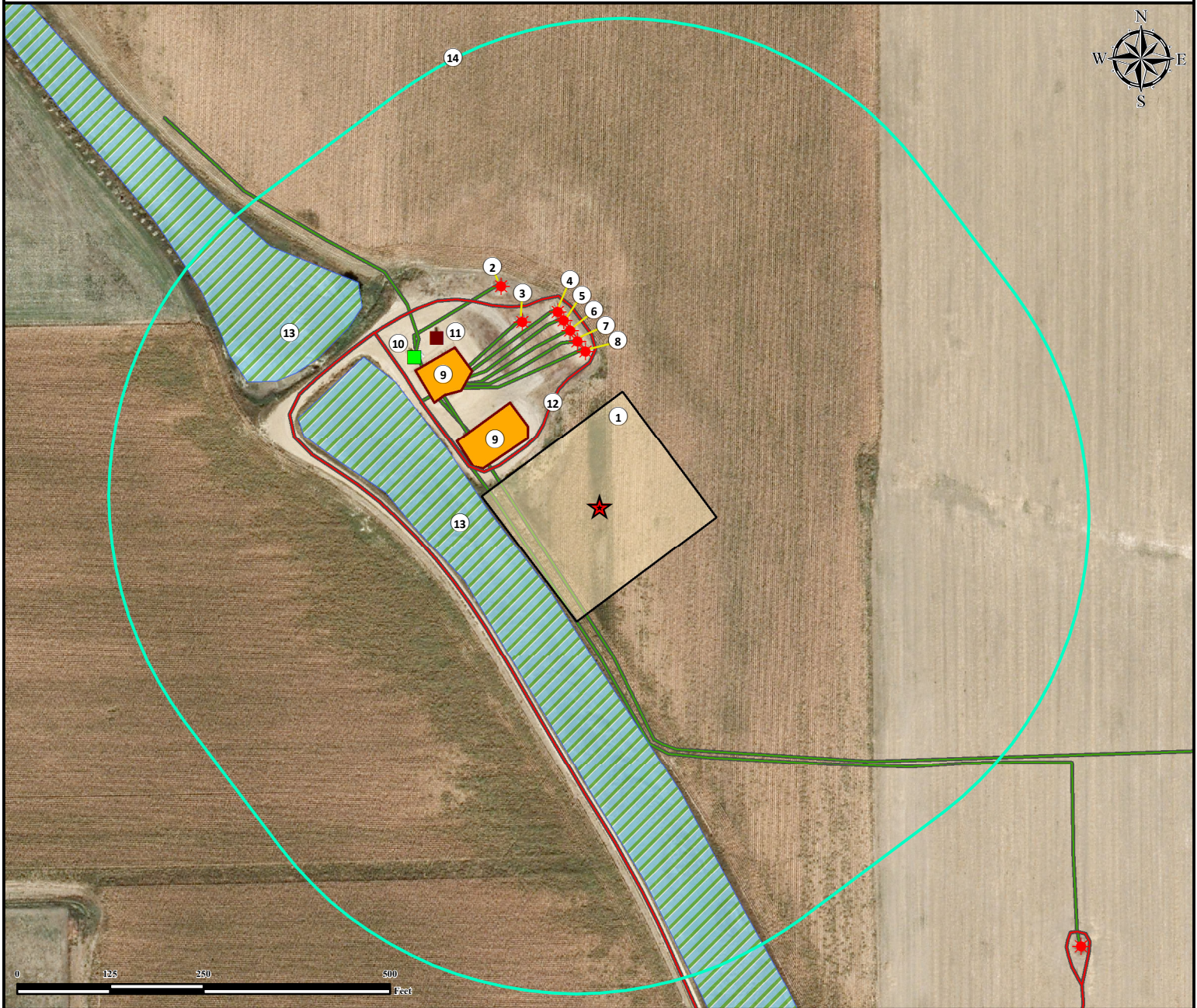


# Location Drawing

## BAREFOOT 34C-25HZ Facility

SE¼ SE¼ SECTION 25, TOWNSHIP 3 NORTH, RANGE 68 WEST OF THE 6TH PRINCIPAL MERIDIAN



- |                                                         |                                                   |                                         |
|---------------------------------------------------------|---------------------------------------------------|-----------------------------------------|
| 1. Proposed BAREFOOT 34C-25HZ Facility.                 | 6. Existing Well RADEMACHER #39-25 is ±240' NW.   | 12. Private Road is ±126' NW.           |
| 2. Existing Well EDWARD RADEMACHER UNIT #2 is ±324' NW. | 7. Existing Well RADEMACHER #37-25 is ±223' NW.   | 13. Wetlands are ±121' NW and ±413' NW. |
| 3. Existing Well RADEMACHER #15-25 is ±269' NW.         | 8. Existing Well RADEMACHER #38-25 is ±209' NW.   | 14. 500' Radius.                        |
| 4. Existing Well RADEMACHER #10-25 is ±267' NW.         | 9. Existing Facilities are ±133' NW and ±242' NW. |                                         |
| 5. Existing Well RADEMACHER #23-25 is ±254' NW.         | 10. EFM is ±318' NW.                              |                                         |
|                                                         | 11. ECD is ±314' NW.                              |                                         |

Legend		
	Existing Well	
	ECD	
	EFM	

Reference Location
** All measurements are made from Reference Point  **
Lat: 40.192879° Long:-104.947133° (NAD83) Elevation: 4874 Feet
Surface Use: Irrigated Crop
Nearest Building Unit: >1000' SW

**PFS** *Use our resources to find yours!*  
[www.petro-fs.com](http://www.petro-fs.com)  
 (303) 928-7128

Field Date: 10/14/2013  
 Drafting Date: 10/31/2013  
 Drafter: CPO  
 Revision: 1

FSL: 1071' FEL: 1499'  
 Data Sources:  
 - Aerial courtesy of Anadarko Petroleum Corporation (2010)

Prepared for: **Anadarko**   
 Petroleum Corporation  
**KERR-MCGEE OIL & GAS ONSHORE LP**