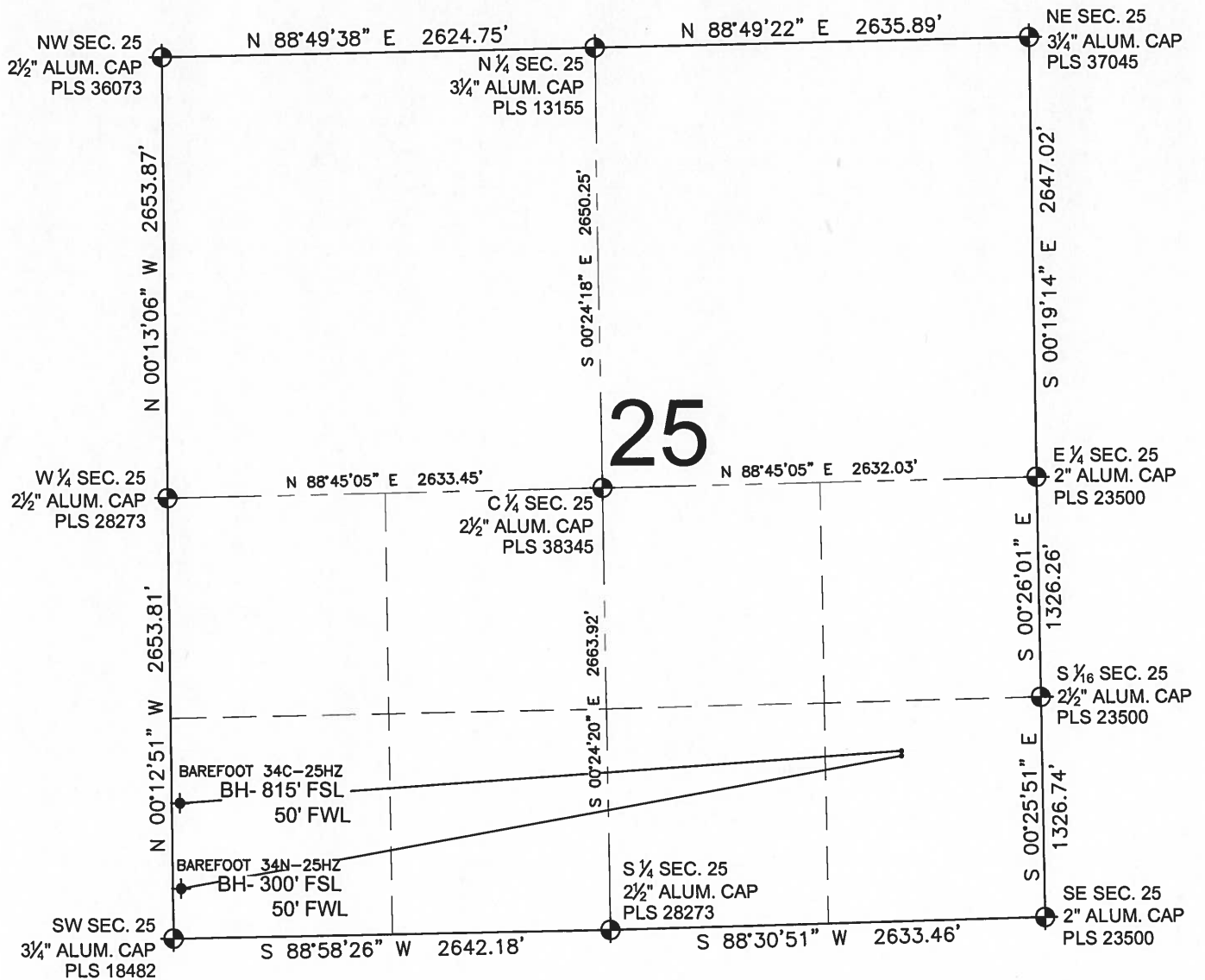


BAREFOOT 34C-25HZ MULTI-WELL PLAN

SECTION 25, TOWNSHIP 3 NORTH, RANGE 68 WEST, 6TH P.M.



LEGEND

- ⊕ = EXISTING MONUMENT
- = PROPOSED WELL
- ⬮ = BOTTOM HOLE
- ◆ = EXISTING WELL
- BH = BOTTOM HOLE

NOTES:

BAREFOOT 34N-25HZ TO BE AT 997' FSL, 854' FEL.
 BOTTOM HOLE AT 300' FSL & 50' FWL
 BAREFOOT 34C-25HZ TO BE AT 1027' FSL, 853' FEL.
 BOTTOM HOLE AT 815' FSL & 50' FWL

PREPARED BY:



KERR-MCGEE OIL & GAS ONSHORE LP

FIELD DATE:
10-14-13

DRAWING DATE:
10-31-13

SURFACE LOCATION:

SE 1/4, SE 1/4, SEC. 25, T3N, R68W, 6TH P.M.
 WELD COUNTY, COLORADO

