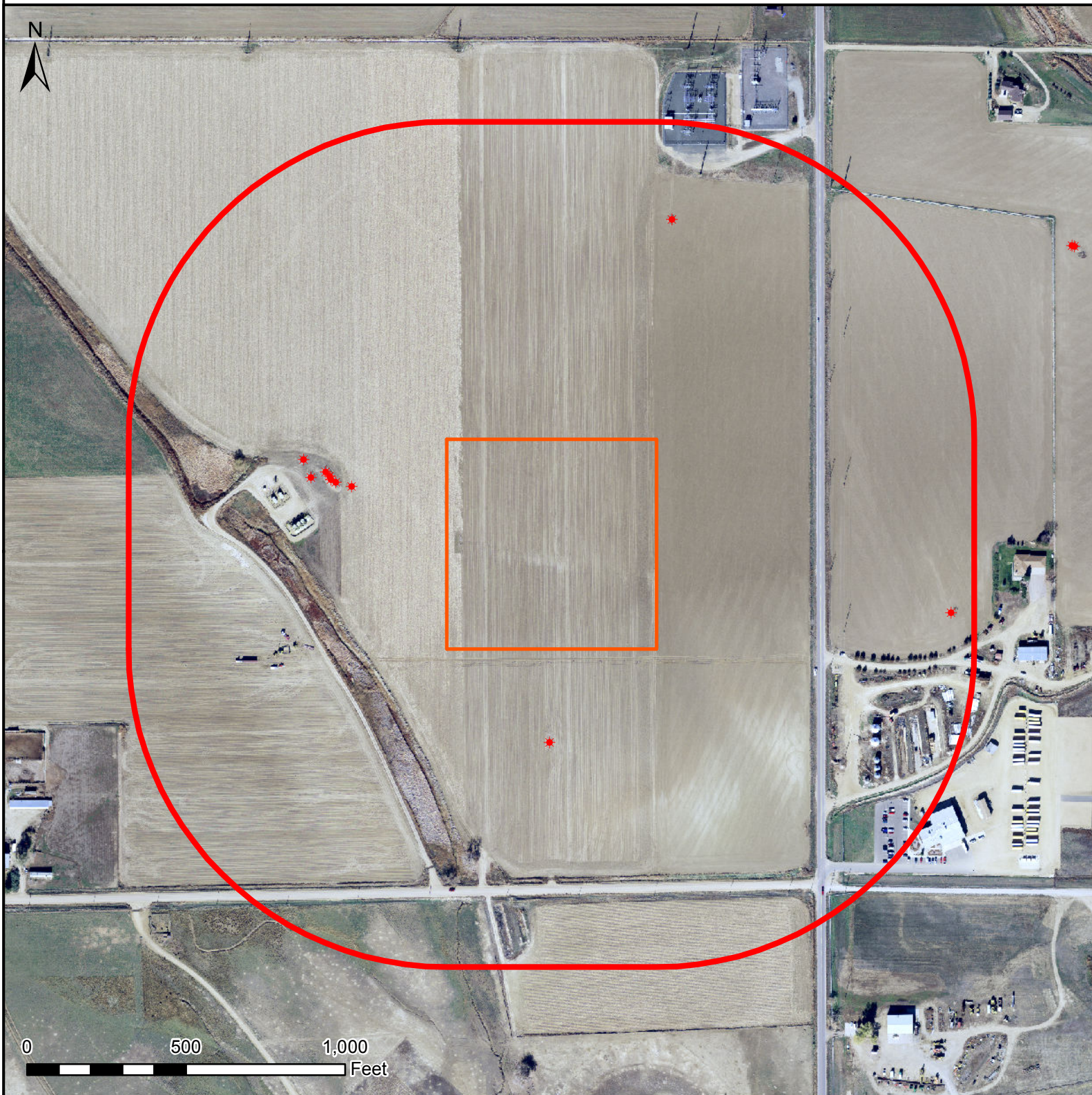





# HYDROLOGY MAP

## BAREFOOT 34C-25HZ



### Legend

-  1000' buffer
-  Well pad (proposed)
-  Existing oil/gas well (COGCC)

All measurements are made from the reference well.

### Nearest Surface Water Feature

Wetland: 642' W Elev: 4860'  
Stream: 706' W Elev: 4860'  
Ditch: 1342' SE Elev: 4830'  
Ditch: 1472' NE Elev: 4870'  
Well elevation: 4864'



Date created: 2/19/2014  
Created by: APC Regulatory GIS  
Scale: 1:5,000  
Projection: NAD83 UTM 13N