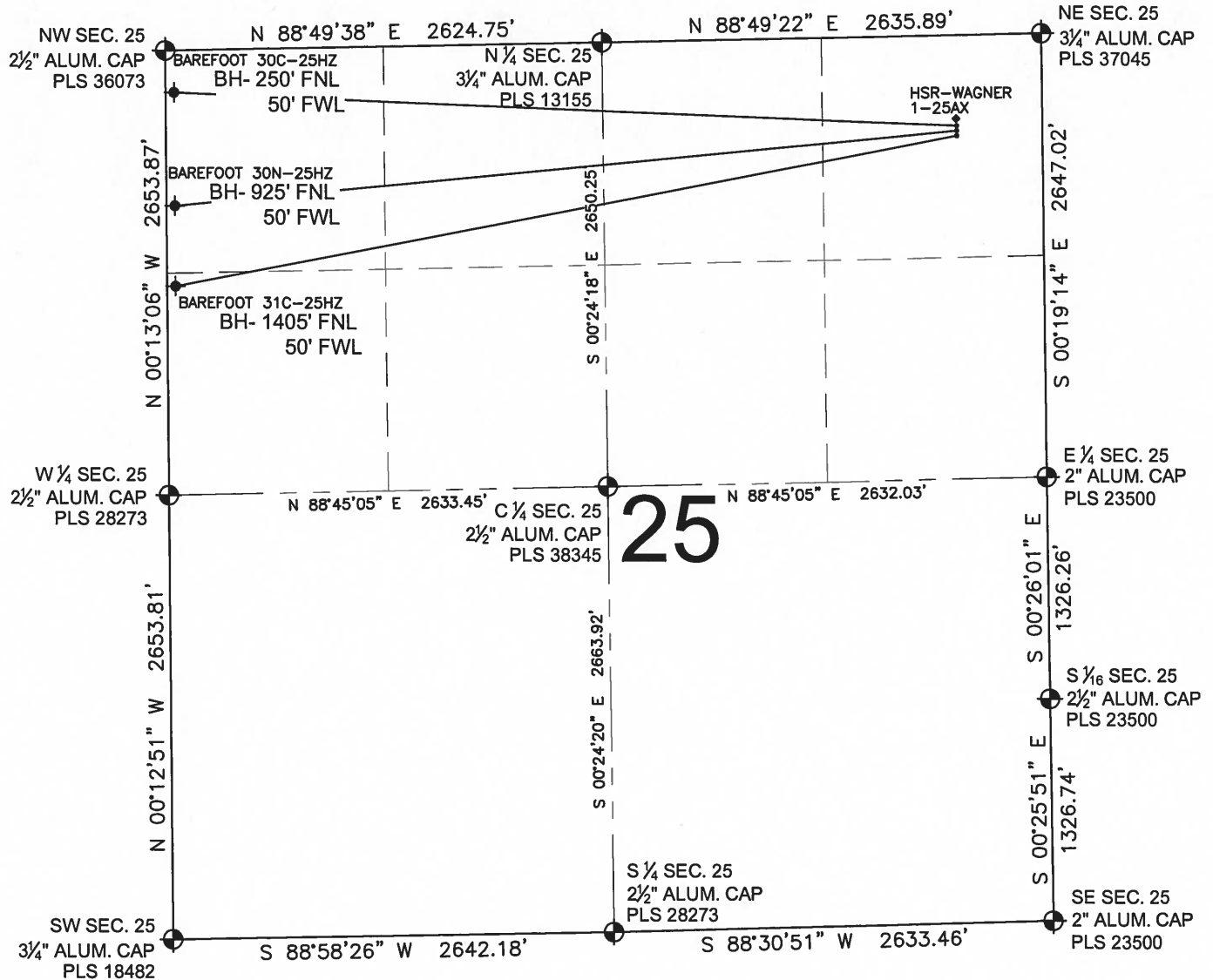


# BAREFOOT 30C-25HZ MULTI-WELL PLAN

SECTION 25, TOWNSHIP 3 NORTH, RANGE 68 WEST, 6TH P.M.



## LEGEND

- ⊕ = EXISTING MONUMENT
- = PROPOSED WELL
- ⬮ = BOTTOM HOLE
- ◆ = EXISTING WELL
- BH = BOTTOM HOLE

## NOTES:

BAREFOOT 30C-25HZ TO BE AT 539' FNL, 514' FEL.  
BOTTOM HOLE AT 250' FNL & 50' FWL  
BAREFOOT 30N-25HZ TO BE AT 569' FNL, 514' FEL.  
BOTTOM HOLE AT 925' FNL & 50' FWL  
BAREFOOT 31C-25HZ TO BE AT 599' FNL, 514' FEL.  
BOTTOM HOLE AT 1405' FNL & 50' FWL  
HSR-WAGNER 1-25AX IS 509' FNL, 514' FEL.

PREPARED BY:



KERR-MCGEE OIL & GAS ONSHORE LP

FIELD DATE:  
10-14-13

DRAWING DATE:  
10-31-13

SURFACE LOCATION:

NE 1/4, NE 1/4, SEC. 25, T3N, R68W, 6TH P.M.  
WELD COUNTY, COLORADO

