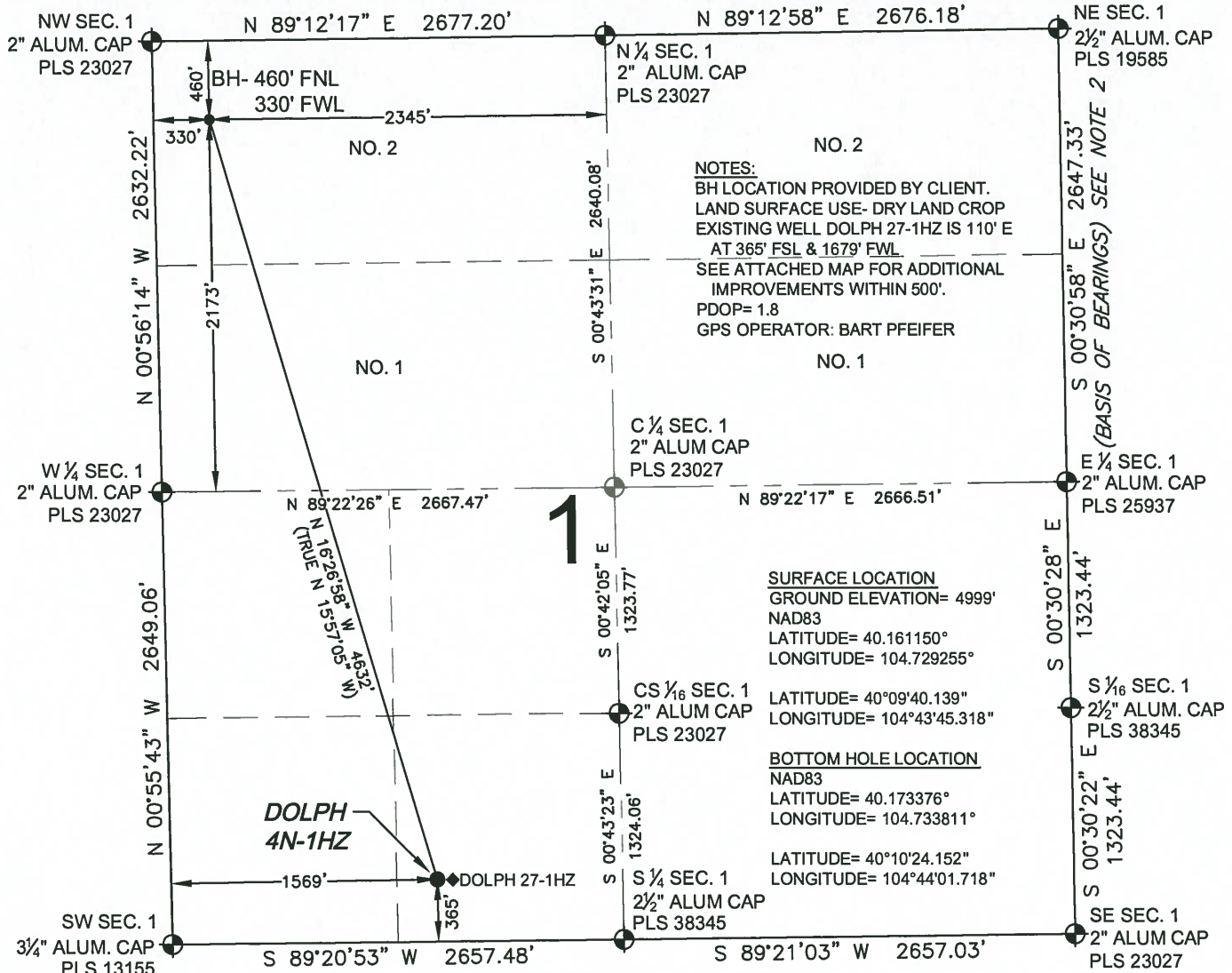


WELL LOCATION CERTIFICATE: DOLPH 4N-1HZ

SECTION 1, TOWNSHIP 2 NORTH, RANGE 66 WEST, 6TH P.M.



NOTES:
 BH LOCATION PROVIDED BY CLIENT.
 LAND SURFACE USE- DRY LAND CROP
 EXISTING WELL DOLPH 27-1HZ IS 110' E
 AT 365' FSL & 1679' FWL
 SEE ATTACHED MAP FOR ADDITIONAL
 IMPROVEMENTS WITHIN 500'.
 PDOP= 1.8
 GPS OPERATOR: BART PFEIFER

SURFACE LOCATION
 GROUND ELEVATION= 4999'
 NAD83
 LATITUDE= 40.161150°
 LONGITUDE= 104.729255°

LATITUDE= 40°09'40.139"
 LONGITUDE= 104°43'45.318"

BOTTOM HOLE LOCATION
 NAD83
 LATITUDE= 40.173376°
 LONGITUDE= 104.733811°

LATITUDE= 40°10'24.152"
 LONGITUDE= 104°44'01.718"

WELL DOLPH 4N-1HZ TO BE LOCATED 365' FSL AND 1569' FWL

LEGEND

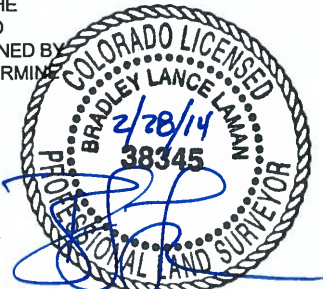
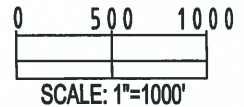
- ⊕ = EXISTING MONUMENT
- ⊙ = PROPOSED WELL
- BH = BOTTOM HOLE
- ⊕ = BOTTOM HOLE
- ◆ = EXISTING WELL

NOTES:

- THIS FIELD SURVEY CONFORMS TO THE MINIMUM STANDARDS SET BY THE C.O.G.C.C., RULE NO. 215
- BEARINGS AND DISTANCE SHOWN HEREON ARE GRID AND BASED ON THE COLORADO STATE PLANE COORDINATE SYSTEM, NAD 83/2011 BETWEEN MONUMENTS AS LABELED HEREON AND ELEVATIONS SHOWN ARE NAVD 88, AS DERIVED BY GPS OBSERVATIONS.
- GRID DISTANCES ARE SHOWN, AS MEASURED IN THE FIELD, WITH TIES TO WELLS MEASURED PERPENDICULAR TO SECTION LINES.

I, BRADLEY L. LAMAN, A LICENSED PROFESSIONAL LAND SURVEYOR IN THE STATE OF COLORADO DO HEREBY CERTIFY TO KERR-MCGEE OIL & GAS ONSHORE LP, THAT THE SURVEY AND WELL LOCATION CERTIFICATE SHOWN HEREON WERE DONE BY ME OR UNDER MY DIRECT SUPERVISION AND THAT THE DRAWING SHOWN HEREON ACCURATELY DEPICTS THE PROPOSED LOCATION OF THE WELL. THIS CERTIFICATE DOES NOT REPRESENT A LAND SURVEY PLAT OR IMPROVEMENT SURVEY PLAT AS DEFINED BY C.R.S. 38-51-102 AND CANNOT BE RELIED UPON TO DETERMINE OWNERSHIP.

BRADLEY L. LAMAN, PLS 38345
 COLORADO LICENSED PROFESSIONAL LAND SURVEYOR
 FOR AND ON BEHALF OF P.F.S., LLC



PREPARED BY: Petroleum Field Services, LLC 1801 W. 13th Ave. Denver, CO 80204	FIELD DATE: 10-29-13	SURFACE LOCATION: SE 1/4, SW 1/4, SEC. 1, T2N, R66W, 6TH P.M.
	DRAWING DATE: 02-28-14	BY: SMF CHECKED: SMG

NOTICE: ACCORDING TO COLORADO LAW YOU MUST COMMENCE ANY LEGAL ACTION BASED UPON ANY DEFECT IN THIS SURVEY WITHIN THREE YEARS AFTER YOU FIRST DISCOVER SUCH DEFECT. IN NO EVENT MAY ANY ACTION BASED UPON ANY DEFECT IN THIS SURVEY BE COMMENCED MORE THAN TEN YEARS FROM THIS SAID DATE OF THIS CERTIFICATION SHOWN HEREON.