

The Road to Excellence Starts with Safety

Sold To #: 345242		Ship To #: 3281644		Quote #:		Sales Order #: 901055743	
Customer: NOBLE ENERGY INC E-BUSINESS				Customer Rep: Monagham, Keving			
Well Name: Trebor			Well #: B 11-16		API/UWI #:		
Field:		City (SAP): KERSEY		County/Parish: Weld		State: Colorado	
Contractor: WORKOVER			Rig/Platform Name/Num: WORKOVER WORKOVER				
Job Purpose: Recement Service							
Well Type: Development Well				Job Type: Recement Service			
Sales Person: FINK, JOHN				Srv Supervisor: WHIPPLE, WESLEY		MBU ID Emp #: 518611	

## Job Personnel

HES Emp Name	Exp Hrs	Emp #	HES Emp Name	Exp Hrs	Emp #	HES Emp Name	Exp Hrs	Emp #
BARNES, BRIAN L	2.2	485204	MASTEL, RYAN Eugene	2.2	561732	TORREY, SPENCER Kenneth	2.2	549837
WHIPPLE, WESLEY Morgan	2.2	518611						

## Equipment

HES Unit #	Distance-1 way	HES Unit #	Distance-1 way	HES Unit #	Distance-1 way	HES Unit #	Distance-1 way
11566182	39 mile	11645065	39 mile	11812069C	39 mile	12010172	39 mile

## Job Hours

Date	On Location Hours	Operating Hours	Date	On Location Hours	Operating Hours	Date	On Location Hours	Operating Hours
TOTAL								

Total is the sum of each column separately

Job				Job Times			
Formation Name	Formation Depth (MD)	Top	Bottom	Called Out	Date	Time	Time Zone
Form Type			BHST	On Location	21 - Jan - 2014	06:00	MST
Job depth MD	442. ft		Job Depth TVD	Job Started	21 - Jan - 2014	09:50	MST
Water Depth			Wk Ht Above Floor	Job Completed	21 - Jan - 2014	10:35	MST
Perforation Depth (MD)	From		To	Job Completed	21 - Jan - 2014	11:08	MST
				Departed Loc	21 - Jan - 2014	12:00	MST

## Well Data

Description	New / Used	Max pressure psig	Size in	ID in	Weight lbm/ft	Thread	Grade	Top MD ft	Bottom MD ft	Top TVD ft	Bottom TVD ft
-------------	------------	-------------------	---------	-------	---------------	--------	-------	-----------	--------------	------------	---------------

## Tools and Accessories

Type	Size	Qty	Make	Depth	Type	Size	Qty	Make	Depth	Type	Size	Qty	Make
Guide Shoe					Packer					Top Plug			
Float Shoe					Bridge Plug					Bottom Plug			
Float Collar					Retainer					SSR plug set			
Insert Float										Plug Container			
Stage Tool										Centralizers			

## Miscellaneous Materials

Gelling Agt	Conc		Surfactant	Conc		Acid Type	Qty	Conc	%
Treatment Fld	Conc		Inhibitor	Conc		Sand Type	Size		Qty

## Fluid Data

Stage/Plug #: 1										
Fluid #	Stage Type	Fluid Name	Qty	Qty uom	Mixing Density lbm/gal	Yield ft <sup>3</sup> /sk	Mix Fluid Gal/sk	Rate bbl/min	Total Mix Fluid Gal/sk	

Stage/Plug #: 1										
Fluid #	Stage Type	Fluid Name	Qty	Qty uom	Mixing Density uom	Yield uom	Mix Fluid uom	Rate uom	Total Mix Fluid uom	
1	Fresh Water			bbl	8.34	1.0	1.0	2.0		

HALLIBURTON

## Cementing Job Summary

Stage/Plug #: 1										
Fluid #	Stage Type	Fluid Name	Qty	Qty uom	Mixing Density lbm/gal	Yield ft <sup>3</sup> /sk	Mix Fluid Gal/sk	Rate bbl/min	Total Mix Fluid Gal/sk	
2	15.8# Neat G	HALCEM (TM) SYSTEM (452986)		sacks	15.8	1.15	5.0		5.0	
5 Gal		FRESH WATER								
Calculated Values		Pressures		Volumes						
Displacement	.5	Shut In: Instant		Lost Returns		Cement Slurry	38	Pad		
Top Of Cement		5 Min		Cement Returns	5	Actual Displacement	0.5	Treatment		
Frac Gradient		15 Min		Spacers		Load and Breakdown		Total Job		
Rates										
Circulating		Mixing		Displacement		Avg. Job				
Cement Left In Pipe	Amount	0 ft	Reason	Shoe Joint						
Frac Ring # 1 @	ID	Frac ring # 2 @	ID	Frac Ring # 3 @	ID	Frac Ring # 4 @	ID			
The Information Stated Herein Is Correct				Customer Representative Signature						



The Road to Excellence Starts with Safety

Sold To #: 345242		Ship To #: 3281644		Quote #:		Sales Order #: 901055743	
Customer: NOBLE ENERGY INC E-BUSINESS				Customer Rep: Monaghams, Kevin			
Well Name: Trebor			Well #: B 11-16		API/UWI #:		
Field:		City (SAP): KERSEY		County/Parish: Weld		State: Colorado	
Legal Description:							
Lat:				Long:			
Contractor: WORKOVER			Rig/Platform Name/Num: WORKOVER WORKOVER				
Job Purpose: Recement Service						Ticket Amount:	
Well Type: Development Well			Job Type: Recement Service				
Sales Person: FINK, JOHN			Srvc Supervisor: WHIPPLE, WESLEY			MBU ID Emp #: 518611	

Activity Description	Date/Time	Cht #	Rate bbl/ min	Volume bbl		Pressure psig		Comments
				Stage	Total	Tubing	Casing	
Call Out	01/21/2014 06:00							CREW CALLED OUT BY COORDINATING OFFICE @ 0600 REQUESTED ON LOCATION AT 1000
Crew Leave Yard	01/21/2014 09:00							CREW PRE TRIPPED ALL EQUIPMENT AND HELD PRE JOURNEY SAFETY MEETING TO DISCUSS ROUTE BEING TRAVELED AND POTENTIAL HAZARDS
Arrive At Loc	01/21/2014 09:50							ARRIVED ON LOCATION AND MET WITH COMPANY REP TO DISCUSS JOB DETAILS
Rig-Up Equipment	01/21/2014 10:00							HELD PRE RIG UP SAFETY MEETING AND COMMENCED RIG UP OF ALL EQUIPMENT
Safety Meeting	01/21/2014 10:30							HELD A PRE JOB SAFETY MEETING WITH ALL HANDS ON LOCATION TO DISCUSS JOB PROCESS, PROCEDURE AND POTENTIAL HAZARDS THAT COULD OCCUR DURING CEMENTING
Start Job	01/21/2014 10:35							
Activity Description	Date/Time	Cht	Rate bbl/ min	Volume bbl		Pressure psig		Comments

Sold To #: 345242

Ship To #: 3281644

Quote #:

Sales Order #: 901055743

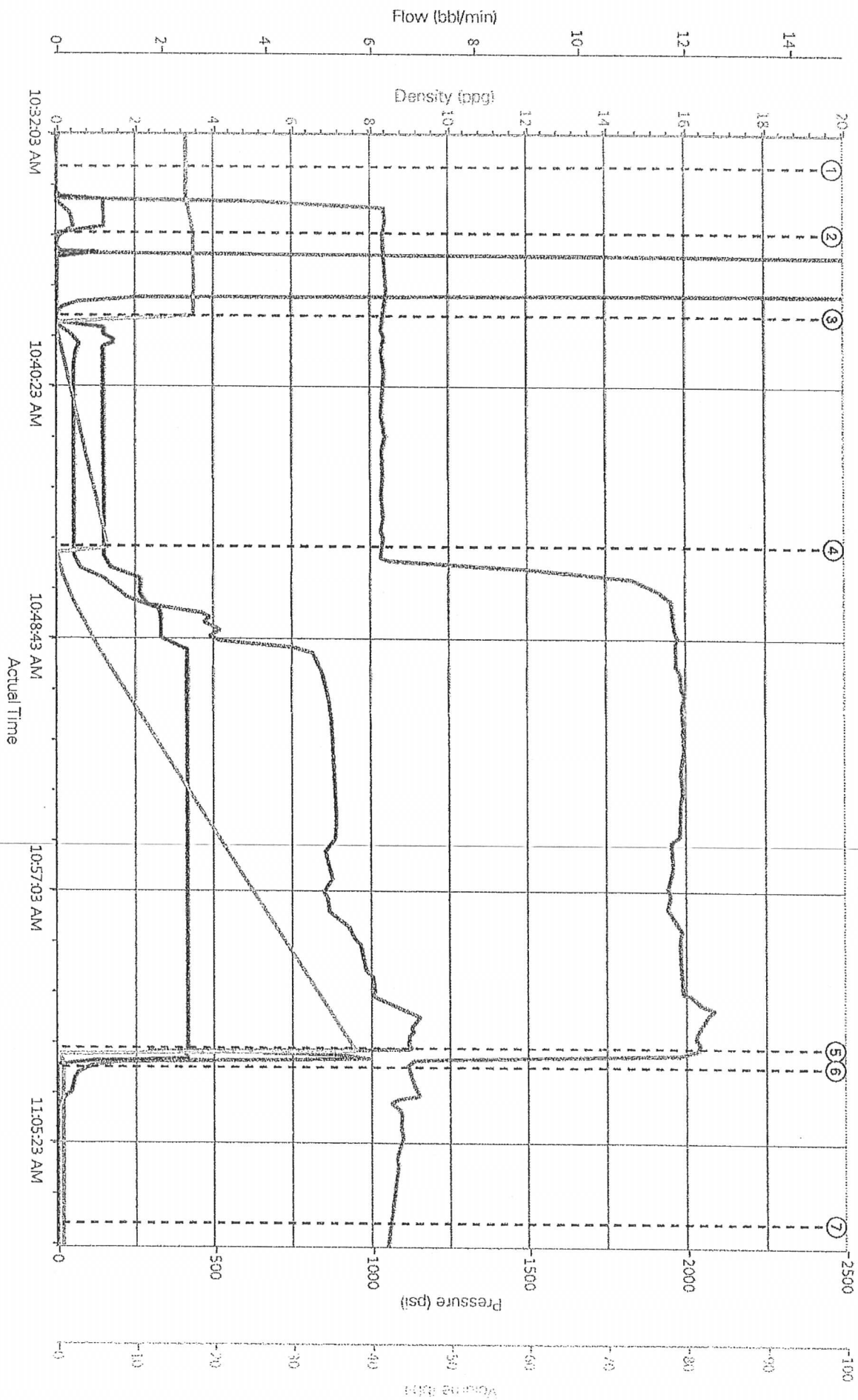
SUMMIT Version: 7.3.0109

Tuesday, January 21, 2014 11:29:00

## Cementing Job Log

		#		Stage	Total	Tubing	Casing	
Test Lines	01/21/2014 10:37							PRESSURE TESTED PUMPS AND LINES TO 3000, FOUND NO VISABLE LEAKS AND RESSURE HELD
Pump Spacer 1	01/21/2014 10:40		1	6.5			66.0	PUMP FRESH WATER SPACER TO BREAK CIRCULATION AND TO WEIGH UP CEMENT
Pump Cement	01/21/2014 10:47		2.5	38			880.0	MIXED AND PUMP 185 SKS OF MTN G CEMENT AT 15.8 PPG. DENSITY VERIFIED BY MUD SCALES
Pump Displacement	01/21/2014 11:02			0.5				PUMP FRESH WATER DISPLACEMENT
Shutdown	01/21/2014 11:03							
Clean Lines	01/21/2014 11:04							CLEAN PUMPS AND LINES FREE OF CEMENT
End Job	01/21/2014 11:08							COMMENCED RIG DOWN OF ALL EQUIPMENT, WET AND DRY CEMENT SAMPLES WERE LEFT ON LOCATION

# NOBLETREBOR B 11-16



DH Density (ppg) PS Pump Press (psi) PS Pump Rate (bbl/min) Pump Stg Tot (bbl)

① Start Job 8:02:59:01 AM ④ Pump Cement 8:32:56:09:16.6 ⑦ End Job 8:47:12:09:16.6

② Test Lines 8:33:12:01:17.6 ⑤ Pump Displacement 16:25:37:42:5:00.1

③ Pump Spacer 1 8:33:44:01:17.6 ⑥ SHUTDOWN 8:59:75:00:0.5