

---

**WPX ENERGY ROCKY MOUNTAIN LLC-EBUS**

---

**CMU 323-33  
GRAND VALLEY  
Garfield County , Colorado**

**Cement Surface Casing**  
**20-Aug-2013**

**Post Job Report**

## The Road to Excellence Starts with Safety

Sold To #: 300721	Ship To #: 3095856	Quote #:	Sales Order #: 900678661
Customer: WPX ENERGY ROCKY MOUNTAIN LLC-EBUS		Customer Rep: Vallad, Gary	
Well Name: CMU		Well #: 323-33	API/UWI #:
Field: GRAND VALLEY	City (SAP): NEW CASTLE	County/Parish: Garfield	State: Colorado
Contractor: NABORS 574		Rig/Platform Name/Num: NABORS 574	
Job Purpose: Cement Surface Casing			
Well Type: Development Well		Job Type: Cement Surface Casing	
Sales Person: MAYO, MARK		Srvc Supervisor: SMITH, DUSTIN	MBU ID Emp #: 418015

## Job Personnel

HES Emp Name	Exp Hrs	Emp #	HES Emp Name	Exp Hrs	Emp #	HES Emp Name	Exp Hrs	Emp #
BANKS, BRENT A	8	371353	BLUST, CHARLES Thomas	8	386662	LIDE, DAVID	8	547540
SMITH, DUSTIN Michael	8	418015						

## Equipment

HES Unit #	Distance-1 way	HES Unit #	Distance-1 way	HES Unit #	Distance-1 way	HES Unit #	Distance-1 way
10567589C	60 mile	10867094	60 mile	10897925	60 mile	11259881	60 mile
11808829	60 mile						

## Job Hours

Date	On Location Hours	Operating Hours	Date	On Location Hours	Operating Hours	Date	On Location Hours	Operating Hours
08/20/13	8	4						

**TOTAL** Total is the sum of each column separately

## Job

Formation Name					Job Times			
Formation Depth (MD)	Top	Bottom			Called Out	Date	Time	Time Zone
Form Type	BHST				On Location	20 - Aug - 2013	10:00	MST
Job depth MD	1172. ft	Job Depth TVD	1172. ft		Job Started	20 - Aug - 2013	14:12	MST
Water Depth		Wk Ht Above Floor	5. ft		Job Completed	20 - Aug - 2013	15:32	MST
Perforation Depth (MD)	From	To			Departed Loc	20 - Aug - 2013	18:00	MST

## Well Data

Description	New / Used	Max pressure psig	Size in	ID in	Weight lbm/ft	Thread	Grade	Top MD ft	Bottom MD ft	Top TVD ft	Bottom TVD ft
OPEN HOLE				13.5				.	1172.		
SURFACE CASING	New		9.625	9.001	32.3		H-40	.	1172.6		

## Tools and Accessories

Type	Size	Qty	Make	Depth	Type	Size	Qty	Make	Depth	Type	Size	Qty	Make
Guide Shoe					Packer					Top Plug	9 5/8	1	HES
Float Shoe					Bridge Plug					Bottom Plug			
Float Collar					Retainer					SSR plug set			
Insert Float										Plug Container	9 5/8	1	HES
Stage Tool										Centralizers			

## Miscellaneous Materials

Gelling Agt		Conc		Surfactant		Conc		Acid Type		Qty		Conc	%
Treatment Fld		Conc		Inhibitor		Conc		Sand Type		Size		Qty	

## Fluid Data

Stage/Plug #: 1													
Fluid #	Stage Type	Fluid Name			Qty	Qty uom	Mixing Density lbm/gal	Yield ft <sup>3</sup> /sk	Mix Fluid Gal/sk	Rate bbl/min	Total Mix Fluid Gal/sk		

Stage/Plug #: 1

Stage/Plug #: 1									
Fluid #	Stage Type	Fluid Name	Qty	Qty uom	Mixing Density lbm/gal	Yield ft <sup>3</sup> /sk	Mix Fluid Gal/sk	Rate bbl/min	Total Mix Fluid Gal/sk
1	Fresh Water Spacer		20.00	bbl	8.33	.0	.0	4.0	
2	VariCem GJ! Lead Cement	VARICEM (TM) CEMENT (452009)	160.0	sacks	12.3	2.38	13.75	8.0	13.75
13.75 Gal		FRESH WATER							
3	VersaCem GJ1Tail Cement	VARICEM (TM) CEMENT (452009)	160.0	sacks	12.8	2.11	11.75	8.0	11.75
11.75 Gal		FRESH WATER							
4	Fresh Water Displacement		88.60	bbl	8.33	.0	.0	10.0	
Calculated Values		Pressures		Volumes					
Displacement	88.6	Shut In: Instant		Lost Returns	0	Cement Slurry	127.9	Pad	
Top Of Cement	SURFACE	5 Min		Cement Returns	30	Actual Displacement	88.6	Treatment	
Frac Gradient		15 Min		Spacers	20	Load and Breakdown		Total Job	236.5
Rates									
Circulating	12	Mixing	8	Displacement	10	Avg. Job	8		
Cement Left In Pipe	Amount	46.4 ft	Reason	Shoe Joint					
Frac Ring # 1 @	ID	Frac ring # 2 @	ID	Frac Ring # 3 @	ID	Frac Ring # 4 @	ID		
The Information Stated Herein Is Correct				Customer Representative Signature					

*The Road to Excellence Starts with Safety*

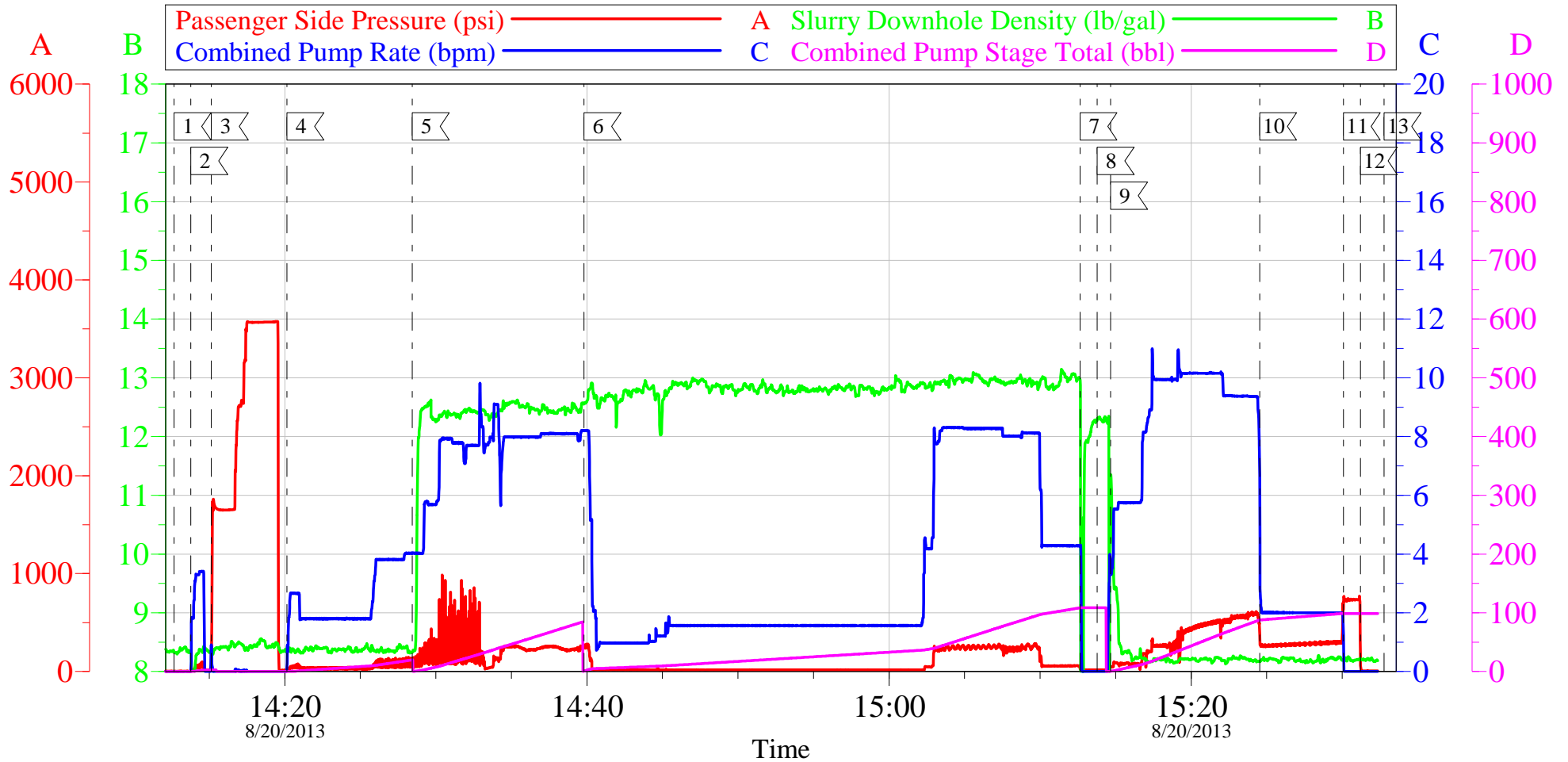
<b>Sold To #:</b> 300721		<b>Ship To #:</b> 3095856		<b>Quote #:</b>		<b>Sales Order #:</b> 900678661	
<b>Customer:</b> WPX ENERGY ROCKY MOUNTAIN LLC-EBUS				<b>Customer Rep:</b> Vallad, Gary			
<b>Well Name:</b> CMU			<b>Well #:</b> 323-33			<b>API/UWI #:</b>	
<b>Field:</b> GRAND VALLEY		<b>City (SAP):</b> NEW CASTLE		<b>County/Parish:</b> Garfield		<b>State:</b> Colorado	
<b>Legal Description:</b>							
<b>Lat:</b>				<b>Long:</b>			
<b>Contractor:</b> NABORS 574			<b>Rig/Platform Name/Num:</b> NABORS 574				
<b>Job Purpose:</b> Cement Surface Casing						<b>Ticket Amount:</b>	
<b>Well Type:</b> Development Well			<b>Job Type:</b> Cement Surface Casing				
<b>Sales Person:</b> MAYO, MARK			<b>Srv Supervisor:</b> SMITH, DUSTIN			<b>MBU ID Emp #:</b> 418015	

Activity Description	Date/Time	Cht #	Rate bbl/ min	Volume bbl		Pressure psig		Comments
				Stage	Total	Tubing	Casing	
Call Out	08/20/2013 06:00							ELITE # 3
Depart Yard Safety Meeting	08/20/2013 07:30							ALL HES EMPLOYEES
Arrive At Loc	08/20/2013 10:00							ARRIVED ON LOCATION @ 10:00 RIG PREPARING TO START RUNNING CASING
Assessment Of Location Safety Meeting	08/20/2013 11:00							ALL HES EMPLOYEES
Pre-Rig Up Safety Meeting	08/20/2013 12:00							ALL HES EMPLOYEES
Pre-Job Safety Meeting	08/20/2013 13:30							ALL HES EMPLOYEES AND RIG CREW
Start Job	08/20/2013 14:12							TD: 1172 TP: 1172.55 SJ: 46.41 9 5/8 32.3 H- 40 CSG 13 1/2 OH MUD WT 9.6 PPG
Test Lines	08/20/2013 14:15					3570. 0		PRESSURE TEST OK
Pump Spacer	08/20/2013 14:20		4	20			210.0	FRESH H2O SPACER
Pump Lead Cement	08/20/2013 14:28		8	67.8			260.0	160 SKS 12.3 PPG 2.38 YIELD 13.75 GAL/SK LEAD CEMENT WEIGHT VERIFIED VIA MUD SCALES THROUGHOUT LEAD CEMENT
Activity Description	Date/Time	Cht #	Rate bbl/ min	Volume bbl		Pressure psig		Comments
				Stage	Total	Tubing	Casing	

Pump Tail Cement	08/20/2013 14:39		8	60.1			270.0	160 SKS 12.8 PPG 2.11 YIELD 11.75 GAL/SK TAIL CEMENT WEIGHT VERIFIED VIA MUD SCALES THROUGHOUT TAIL CEMENT RATE HAD TO BE SLOWED DURING TAIL CEMENT DUE TO A HYDRAULIC HOSE PARTING ON THE RIGS CELLAR PUMP RATE WAS RESUMED WHEN RIG REPAIRED PROBLEM
Shutdown	08/20/2013 15:12							
Drop Plug	08/20/2013 15:13							PLUG AWAY NO PROBLEMS
Pump Displacement	08/20/2013 15:14		10	88.6			544.0	
Slow Rate	08/20/2013 15:24		2	78			280.0	SLOW RATE TO BUMP PLUG
Bump Plug	08/20/2013 15:30		2	88.6			740.0	PSI BEFORE BUMPING PLUG @ 300 BUMPED UP TO 740 PSI
Check Floats	08/20/2013 15:31							FLOATS HELD 1/2 BBL BACK TO DISPLACEMENT TANKS
End Job	08/20/2013 15:32							RETURNED 30 BBLS OF CEMENT TO SURFACE. NO SUGAR WAS USED AND WAS REMOVED FROM THE TICKET. ADD HOURS AND DERRICK CHARGE WERE ALSO REMOVED FROM THE TICKET. USED 40' OF SUCTION HOSE
Pre-Rig Down Safety Meeting	08/20/2013 15:40							ALL HES EMPLOYEES
Rig-Down Equipment	08/20/2013 15:50							
Pre-Convoy Safety Meeting	08/20/2013 17:50							ALL HES EMPLOYEES
Crew Leave Location	08/20/2013 18:00							THANK YOU FOR USING HALLIBURTON CEMENT DUSTIN SMITH AND CREW

# WPX - CMU 323-33

9.625 IN. SURFACE



## Local Event Log

1 START JOB	14:12:40	2 FILL LINES	14:13:47	3 TEST LINES	14:15:08
4 PUMP H2O SPACER	14:20:08	5 PUMP LEAD CEMENT	14:28:27	6 PUMP TAIL CEMENT	14:39:49
7 SHUTDOWN	15:12:39	8 DROP TOP PLUG	15:13:46	9 PUMP DISPLACEMENT	15:14:40
10 SLOW RATE	15:24:32	11 BUMP PLUG	15:30:04	12 CHECK FLOATS	15:31:12
13 END JOB	15:32:46				

Customer: WPX  
Well Description: CMU-323-33  
Company Rep: GARY VALAD

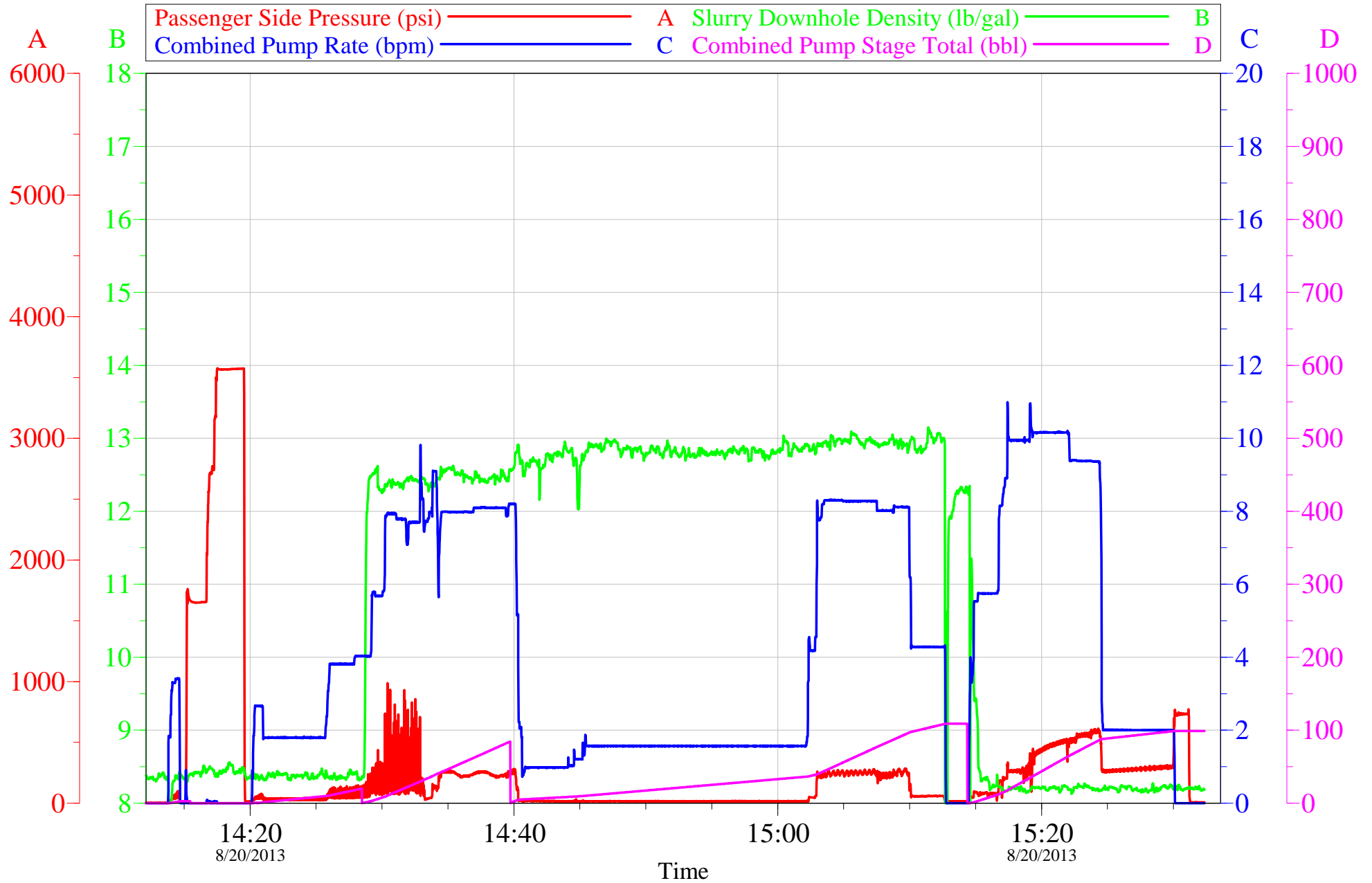
Job Date: 20-Aug-2013  
Job Type: SURFACE  
Cement Supervisor: DUSTIN SMITH

Sales Order #: 900678661  
ADC Used: YES  
Elite #3: BRENT BANKS

OptiCem v6.4.10  
20-Aug-13 16:38

# WPX - CMU 323-33

9.625 IN. SURFACE



Customer:	WPX	Job Date:	20-Aug-2013	Sales Order #:	900678661
Well Description:	CMU-323-33	Job Type:	SURFACE	ADC Used:	YES
Company Rep:	GARY VALAD	Cement Supervisor:	DUSTIN SMITH	Elite #3:	BRENT BANKS

OptiCem v6.4.10  
20-Aug-13 16:38

# HALLIBURTON

## Water Analysis Report

Company: WPX  
Submitted by: DUSTIN SMITH  
Attention: \_\_\_\_\_  
Lease: CMU  
Well #: 323-33

Date: 8/20/2013  
Date Rec.: \_\_\_\_\_  
S.O.#: 900678661  
Job Type: SURFACE

Specific Gravity	<i>MAX</i>	<b>1</b>
pH	<i>8</i>	<b>7.5</b>
Potassium (K)	<i>5000</i>	<b>200</b> Mg / L
Calcium (Ca)	<i>500</i>	<b>0</b> Mg / L
Iron (FE2)	<i>300</i>	<b>0</b> Mg / L
Chlorides (Cl)	<i>3000</i>	<b>0</b> Mg / L
Sulfates (SO <sub>4</sub> )	<i>1500</i>	<b>&lt;200</b> Mg / L
Chlorine (Cl <sub>2</sub> )		<b>0</b> Mg / L
Temp	<i>40-90</i>	<b>70</b> Deg
Total Dissolved Solids		<b>500</b> Mg / L

Respectfully: DUSTIN SMITH

Title: CEMENTING SUPERVISOR

Location: Grand Junction, CO

NOTICE:

This report is limited to the described sample tested. Any person using or relying on this report agrees that Halliburton shall not be liable for any loss or damage whether due to act or omission resulting from such report or its



<b>Sales Order #:</b> 900678661	<b>Line Item:</b> 10	<b>Survey Conducted Date:</b> 8/20/2013
<b>Customer:</b> WPX ENERGY ROCKY MOUNTAIN LLC-EBUS		<b>Job Type (BOM):</b> CMT SURFACE CASING BOM
<b>Customer Representative:</b> GARY VALLAD		<b>API / UWI: (leave blank if unknown)</b> AFEYSKOSPIKSI3Q4AAA
<b>Well Name:</b> CMU		<b>Well Number:</b> 323-33
<b>Well Type:</b> Development Well	<b>Well Country:</b> United States of America	
<b>H2S Present:</b>	<b>Well State:</b> Colorado	<b>Well County:</b> Garfield

Dear Customer,

We hope that you were satisfied with the service quality of this job performed by Halliburton. It is the aim of our management and service personnel to deliver equipment and service of a standard unmatched in the service sector of the energy industry.

Please take the time to let us know if our performance met with your satisfaction. Please be as critical as possible to ensure we constantly improve our service. Your comments are of great value to us and are intended for the exclusive use of Halliburton.

### CUSTOMER SATISFACTION SURVEY

CATEGORY	CUSTOMER SATISFACTION RESPONSE	
Survey Conducted Date	The date the survey was conducted	8/20/2013
Survey Interviewer	The survey interviewer is the person who initiated the survey.	DUSTIN SMITH (HX37079)
Customer Participation	Did the customer participate in this survey? (Y/N)	Yes
Customer Representative	Enter the Customer representative name	GARY VALLAD
HSE	Was our HSE performance satisfactory? Circle Y or N	Yes
Equipment	Were you satisfied with our Equipment? Circle Y or N	Yes
Personnel	Were you satisfied with our people? Circle Y or N	Yes
Customer Comment	Customer's Comment	GOOD JOB

<b>CUSTOMER SIGNATURE</b>
---------------------------

<b>Sales Order #:</b> 900678661	<b>Line Item:</b> 10	<b>Survey Conducted Date:</b> 8/20/2013
<b>Customer:</b> WPX ENERGY ROCKY MOUNTAIN LLC-EBUS		<b>Job Type (BOM):</b> CMT SURFACE CASING BOM
<b>Customer Representative:</b> GARY VALLAD		<b>API / UWI: (leave blank if unknown)</b> AFEYSKOSPIKSI3Q4AAA
<b>Well Name:</b> CMU		<b>Well Number:</b> 323-33
<b>Well Type:</b> Development Well	<b>Well Country:</b> United States of America	
<b>H2S Present:</b>	<b>Well State:</b> Colorado	<b>Well County:</b> Garfield

*KEY PERFORMANCE INDICATORS*

General	
<b>Survey Conducted Date</b> The date the survey was conducted	8/20/2013

Cementing KPI Survey	
<b>Type of Job</b> Select the type of job. (Cementing or Non-Cementing)	0
<b>Select the Maximum Deviation range for this Job</b> What is the highest deviation for the job you just completed? This may not be the maximum well deviation.	Vertical
<b>Total Operating Time (hours)</b> Total Operating Hours Including Rig-up, Pumping, Rig-down. Enter in decimal format.	4
<b>HSE Incident, Accident, Injury</b> HSE Incident, Accident, Injury. This should be recordable incidents only.	No
<b>Was the job purpose achieved?</b> Was the job delivered correctly as per customer agreed design?	Yes
<b>Operating Hours (Pumping Hours)</b> Total number of hours pumping fluid on this job. Enter in decimal format.	1.5
<b>Customer Non-Productive Rig Time (hrs)</b> Lost time due to Halliburton in the start, execution, or completion of an ordered service or product, or delays in a follow-on service. Enter in decimal format. 0 if none.	0
<b>Type of Rig Classification Job Was Performed</b> Type Of Rig (classification) Job Was Performed On	Drilling Rig (Portable)
<b>Number Of JSAs Performed</b> Number Of Jsas Performed	6
<b>Number of Unplanned Shutdowns</b> Unplanned shutdown is when injection stops for any period of time.	0
<b>Was this a Primary Cement Job (Yes / No)</b>	Yes

<b>Sales Order #:</b> 900678661	<b>Line Item:</b> 10	<b>Survey Conducted Date:</b> 8/20/2013
<b>Customer:</b> WPX ENERGY ROCKY MOUNTAIN LLC-EBUS		<b>Job Type (BOM):</b> CMT SURFACE CASING BOM
<b>Customer Representative:</b> GARY VALLAD		<b>API / UWI: (leave blank if unknown)</b> AFEYSKOSPIKSI3Q4AAA
<b>Well Name:</b> CMU		<b>Well Number:</b> 323-33
<b>Well Type:</b> Development Well	<b>Well Country:</b> United States of America	
<b>H2S Present:</b>	<b>Well State:</b> Colorado	<b>Well County:</b> Garfield

Primary Cement Job= Casing job, Liner job, or Tie-back job.	
<b>Did We Run Wiper Plugs?</b> Did We Run Top And Bottom Casing Wiper Plugs?	Top
<b>Mixing Density of Job Stayed in Designed Density Range (0-100%)</b> Density Range defined as +/- .20 ppg. Calculation: Total BBLs cement mixed at designed density divided by total BBLs of cement multiplied by 100	90
<b>Was Automated Density Control Used?</b> Was Automated Density Control (ADC) Used ?	Yes
<b>Pump Rate (percent) of Job Stayed At Designed Pump Rate</b> Pump Rate range defined as +/- 1bbl/min. Calculation: Total BBLs of fluid pumped at the designed rate divided by Total BBLs of fluid pumped, multiplied by 100	90
<b>Nbr of Remedial Sqz Jobs Rqd - Competition</b> Number Of Remedial Squeeze Jobs Required After Primary Job Performed By Competition	0
<b>Nbr of Remedial Plug Jobs Rqd - HES</b> Number Of Remedial Plug Jobs Needed After Primary Plug Pumped By HES	0
<b>Nbr of Remedial Sqz Jobs Rqd - HES</b> Number Of Remedial Squeeze Jobs Required After Primary Job Performed By HES	0