

BILL BARRETT CORP

WELD COUNTY, COLORADO

Anschutz State 5-61-19 SWSW Pad

ANSCHUTZ STATE 5-61-19-6457CH2

Wellbore #1

Plan: Design #1

Standard Planning Report

24 February, 2014



Bill Barrett Corporation

COMPANY DETAILS: BILL BARRETT CORP

Calculation Method: Minimum Curvature
Error System: ISCWSA
Scan Method: Closest Approach 3D
Error Surface: Elliptical Conic
Warning Method: Error Ratio

REFERENCE INFORMATION

Co-ordinate (N/E) Reference: Well ANSCHUTZ STATE 5-61-19-6457CH2, True North
Vertical (TVD) Reference: KB @ 4546.0ft (Original Well Elev)
Section (VS) Reference: Slot - (0.0N, 0.0E)
Measured Depth Reference: KB @ 4546.0ft (Original Well Elev)
Calculation Method: Minimum Curvature

WELL DETAILS: ANSCHUTZ STATE 5-61-19-6457CH2

+N/-S	+E/-W	Northing	Easting	Latitude	Longitude
0.0	0.0	1384271.28	3345262.87	40° 22' 53.771 N	104° 15' 38.228 W

SECTION DETAILS

Sec	MD	Inc	Azi	TVD	+N/-S	+E/-W	DLeg	TFace	VSec	Target
1	0.0	0.00	0.00	0.0	0.0	0.0	0.00	0.00	0.0	
2	1000.0	0.00	0.00	1000.0	0.0	0.0	0.00	0.00	0.0	
3	1388.7	7.77	210.75	1387.5	-22.6	-13.5	2.00	210.75	-12.5	
4	4978.2	7.77	210.75	4944.0	-440.0	-261.7	0.00	0.00	-243.8	
5	5366.9	0.00	89.61	5331.5	-462.6	-275.2	2.00	180.00	-256.3	
6	5616.9	0.00	89.61	5581.5	-462.6	-275.2	0.00	89.61	-256.3	
7	6367.2	90.03	89.61	6059.0	-459.4	202.5	12.00	89.61	220.9	AS 19-6457CH2 LP
8	15967.9	90.03	89.61	6054.0	-394.8	9803.1	0.00	0.00	9811.0	AS 19-6457CH2 PBHL

PROJECT DETAILS: WELD COUNTY, COLORADO

Geodetic System: US State Plane 1983
Datum: North American Datum 1983
Ellipsoid: GRS 1980
Zone: Colorado Northern Zone

FORMATION TOP DETAILS

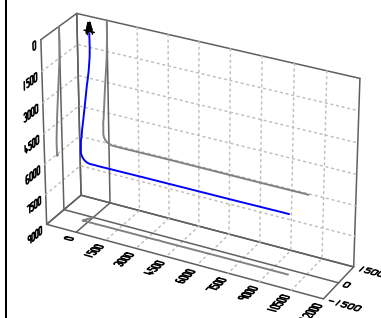
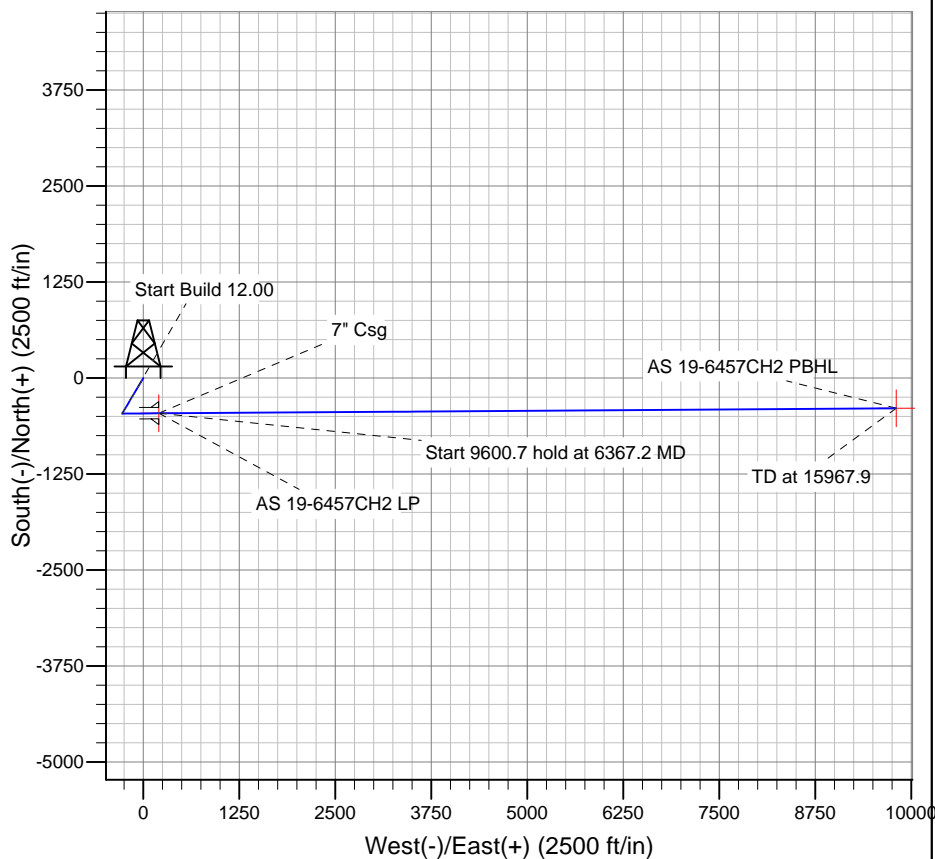
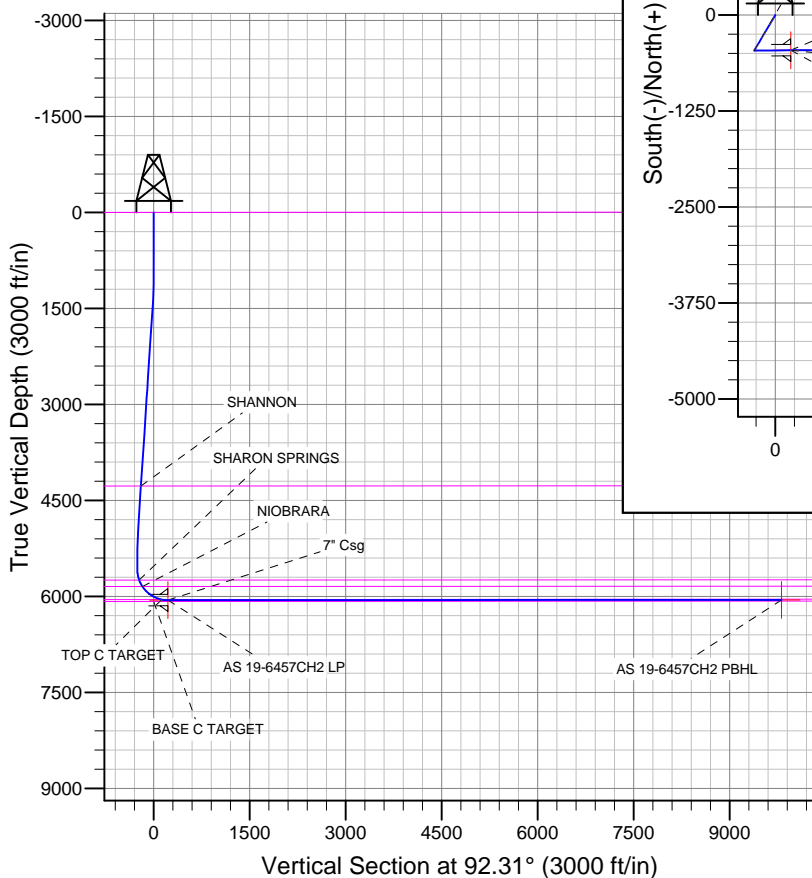
TVDPath	MDPath	Formation
0.0	0.0	BASE C TARGET
4276.0	4304.0	FOX HILLS BASE
5746.0	5784.8	SHANNON
5846.0	5897.2	SHARON SPRINGS
6049.0	6269.0	NIOBRARA
		TOP C TARGET

WELLBORE TARGET DETAILS

Name	TVD	+N/-S	+E/-W	Shape
AS 19-6457CH2 PBHL	6054.0	-394.8	9803.1	Point
AS 19-6457CH2 LP	6059.0	-459.4	202.5	Point

CASING DETAILS

TVD	MD	Name	Size
6059.0	6367.2	7" Csg	7



Azimuths to True North
Magnetic North: 8.22°
Magnetic Field
Strength: 52892.1snT
Dip Angle: 67.02°
Date: 2/24/2014
Model: IGRF2010

Bill Barrett Corp

Planning Report

Database:	Compass	Local Co-ordinate Reference:	Well ANSCHUTZ STATE 5-61-19-6457CH2
Company:	BILL BARRETT CORP	TVD Reference:	KB @ 4546.0ft (Original Well Elev)
Project:	WELD COUNTY, COLORADO	MD Reference:	KB @ 4546.0ft (Original Well Elev)
Site:	Anschutz State 5-61-19 SWSW Pad	North Reference:	True
Well:	ANSCHUTZ STATE 5-61-19-6457CH2	Survey Calculation Method:	Minimum Curvature
Wellbore:	Wellbore #1		
Design:	Design #1		

Project	WELD COUNTY, COLORADO		
Map System:	US State Plane 1983	System Datum:	Mean Sea Level
Geo Datum:	North American Datum 1983		
Map Zone:	Colorado Northern Zone		

Site		Anschutz State 5-61-19 SWSW Pad				
Site Position:		Northing:	1,384,300.43ft	Latitude:	40° 22' 54.059 N	
From:	Lat/Long	Easting:	3,345,262.47ft	Longitude:	104° 15' 38.228 W	
Position Uncertainty:		0.0 ft	Slot Radius:	"	Grid Convergence:	0.80 °

Well		ANSCHUTZ STATE 5-61-19-6457CH2				
Well Position	+N-S	-29.2 ft	Northing:	1,384,271.28 ft	Latitude:	40° 22' 53.771 N
	+E-W	0.0 ft	Easting:	3,345,262.87 ft	Longitude:	104° 15' 38.228 W
Position Uncertainty		0.0 ft	Wellhead Elevation:	ft	Ground Level:	4,530.0ft

Wellbore	Wellbore #1				
Magnetics	Model Name	Sample Date	Declination (°)	Dip Angle (°)	Field Strength (nT)
	IGRF2010	2/24/2014	8.23	67.02	52,892

Design	Design #1				
Audit Notes:					
Version:	Phase:	PLAN		Tie On Depth:	0.0
Vertical Section:	Depth From (TVD) (ft)	+N/-S (ft)	+E/-W (ft)	Direction (°)	
	0.0	0.0	0.0	92.31	

Plan Sections										
Measured Depth (ft)	Inclination (°)	Azimuth (°)	Vertical Depth (ft)	+N/-S (ft)	+E/-W (ft)	Dogleg Rate (°/100ft)	Build Rate (°/100ft)	Turn Rate (°/100ft)	TFO (°)	Target
0.0	0.00	0.00	0.0	0.0	0.0	0.00	0.00	0.00	0.00	
1,000.0	0.00	0.00	1,000.0	0.0	0.0	0.00	0.00	0.00	0.00	
1,388.7	7.77	210.75	1,387.5	-22.6	-13.5	2.00	2.00	0.00	210.75	
4,978.2	7.77	210.75	4,944.0	-440.0	-261.7	0.00	0.00	0.00	0.00	
5,366.9	0.00	89.61	5,331.5	-462.6	-275.2	2.00	-2.00	0.00	180.00	
5,616.9	0.00	89.61	5,581.5	-462.6	-275.2	0.00	0.00	0.00	89.61	
6,367.2	90.03	89.61	6,059.0	-459.4	202.5	12.00	12.00	0.00	89.61	AS 19-6457CH2 LF
15,967.9	90.03	89.61	6,054.0	-394.8	9,803.1	0.00	0.00	0.00	0.00	AS 19-6457CH2 PE

Bill Barrett Corp

Planning Report

Database:	Compass	Local Co-ordinate Reference:	Well ANSCHUTZ STATE 5-61-19-6457CH2
Company:	BILL BARRETT CORP	TVD Reference:	KB @ 4546.0ft (Original Well Elev)
Project:	WELD COUNTY, COLORADO	MD Reference:	KB @ 4546.0ft (Original Well Elev)
Site:	Anschutz State 5-61-19 SWSW Pad	North Reference:	True
Well:	ANSCHUTZ STATE 5-61-19-6457CH2	Survey Calculation Method:	Minimum Curvature
Wellbore:	Wellbore #1		
Design:	Design #1		

Planned Survey									
Measured Depth (ft)	Inclination (°)	Azimuth (°)	Vertical Depth (ft)	+N/-S (ft)	+E/-W (ft)	Vertical Section (ft)	Dogleg Rate (°/100ft)	Build Rate (°/100ft)	Turn Rate (°/100ft)
0.0	0.00	0.00	0.0	0.0	0.0	0.0	0.00	0.00	0.00
FOX HILLS BASE									
100.0	0.00	0.00	100.0	0.0	0.0	0.0	0.00	0.00	0.00
200.0	0.00	0.00	200.0	0.0	0.0	0.0	0.00	0.00	0.00
300.0	0.00	0.00	300.0	0.0	0.0	0.0	0.00	0.00	0.00
400.0	0.00	0.00	400.0	0.0	0.0	0.0	0.00	0.00	0.00
500.0	0.00	0.00	500.0	0.0	0.0	0.0	0.00	0.00	0.00
600.0	0.00	0.00	600.0	0.0	0.0	0.0	0.00	0.00	0.00
700.0	0.00	0.00	700.0	0.0	0.0	0.0	0.00	0.00	0.00
800.0	0.00	0.00	800.0	0.0	0.0	0.0	0.00	0.00	0.00
900.0	0.00	0.00	900.0	0.0	0.0	0.0	0.00	0.00	0.00
1,000.0	0.00	0.00	1,000.0	0.0	0.0	0.0	0.00	0.00	0.00
1,100.0	2.00	210.75	1,100.0	-1.5	-0.9	-0.8	2.00	2.00	0.00
1,200.0	4.00	210.75	1,199.8	-6.0	-3.6	-3.3	2.00	2.00	0.00
1,300.0	6.00	210.75	1,299.5	-13.5	-8.0	-7.5	2.00	2.00	0.00
1,388.7	7.77	210.75	1,387.5	-22.6	-13.5	-12.5	2.00	2.00	0.00
1,400.0	7.77	210.75	1,398.7	-23.9	-14.2	-13.3	0.00	0.00	0.00
1,500.0	7.77	210.75	1,497.8	-35.6	-21.2	-19.7	0.00	0.00	0.00
1,600.0	7.77	210.75	1,596.9	-47.2	-28.1	-26.2	0.00	0.00	0.00
1,700.0	7.77	210.75	1,695.9	-58.8	-35.0	-32.6	0.00	0.00	0.00
1,800.0	7.77	210.75	1,795.0	-70.4	-41.9	-39.0	0.00	0.00	0.00
1,900.0	7.77	210.75	1,894.1	-82.1	-48.8	-45.5	0.00	0.00	0.00
2,000.0	7.77	210.75	1,993.2	-93.7	-55.7	-51.9	0.00	0.00	0.00
2,100.0	7.77	210.75	2,092.3	-105.3	-62.7	-58.4	0.00	0.00	0.00
2,200.0	7.77	210.75	2,191.4	-117.0	-69.6	-64.8	0.00	0.00	0.00
2,300.0	7.77	210.75	2,290.4	-128.6	-76.5	-71.2	0.00	0.00	0.00
2,400.0	7.77	210.75	2,389.5	-140.2	-83.4	-77.7	0.00	0.00	0.00
2,500.0	7.77	210.75	2,488.6	-151.8	-90.3	-84.1	0.00	0.00	0.00
2,600.0	7.77	210.75	2,587.7	-163.5	-97.2	-90.6	0.00	0.00	0.00
2,700.0	7.77	210.75	2,686.8	-175.1	-104.1	-97.0	0.00	0.00	0.00
2,800.0	7.77	210.75	2,785.8	-186.7	-111.1	-103.5	0.00	0.00	0.00
2,900.0	7.77	210.75	2,884.9	-198.3	-118.0	-109.9	0.00	0.00	0.00
3,000.0	7.77	210.75	2,984.0	-210.0	-124.9	-116.3	0.00	0.00	0.00
3,100.0	7.77	210.75	3,083.1	-221.6	-131.8	-122.8	0.00	0.00	0.00
3,200.0	7.77	210.75	3,182.2	-233.2	-138.7	-129.2	0.00	0.00	0.00
3,300.0	7.77	210.75	3,281.2	-244.8	-145.6	-135.7	0.00	0.00	0.00
3,400.0	7.77	210.75	3,380.3	-256.5	-152.6	-142.1	0.00	0.00	0.00
3,500.0	7.77	210.75	3,479.4	-268.1	-159.5	-148.6	0.00	0.00	0.00
3,600.0	7.77	210.75	3,578.5	-279.7	-166.4	-155.0	0.00	0.00	0.00
3,700.0	7.77	210.75	3,677.6	-291.3	-173.3	-161.4	0.00	0.00	0.00
3,800.0	7.77	210.75	3,776.6	-303.0	-180.2	-167.9	0.00	0.00	0.00
3,900.0	7.77	210.75	3,875.7	-314.6	-187.1	-174.3	0.00	0.00	0.00
4,000.0	7.77	210.75	3,974.8	-326.2	-194.1	-180.8	0.00	0.00	0.00
4,100.0	7.77	210.75	4,073.9	-337.9	-201.0	-187.2	0.00	0.00	0.00
4,200.0	7.77	210.75	4,173.0	-349.5	-207.9	-193.7	0.00	0.00	0.00
4,300.0	7.77	210.75	4,272.0	-361.1	-214.8	-200.1	0.00	0.00	0.00
4,304.0	7.77	210.75	4,276.0	-361.6	-215.1	-200.4	0.00	0.00	0.00
SHANNON									
4,400.0	7.77	210.75	4,371.1	-372.7	-221.7	-206.5	0.00	0.00	0.00
4,500.0	7.77	210.75	4,470.2	-384.4	-228.6	-213.0	0.00	0.00	0.00
4,600.0	7.77	210.75	4,569.3	-396.0	-235.6	-219.4	0.00	0.00	0.00
4,700.0	7.77	210.75	4,668.4	-407.6	-242.5	-225.9	0.00	0.00	0.00
4,800.0	7.77	210.75	4,767.5	-419.2	-249.4	-232.3	0.00	0.00	0.00
4,900.0	7.77	210.75	4,866.5	-430.9	-256.3	-238.8	0.00	0.00	0.00

Bill Barrett Corp

Planning Report

Database:	Compass	Local Co-ordinate Reference:	Well ANSCHUTZ STATE 5-61-19-6457CH2
Company:	BILL BARRETT CORP	TVD Reference:	KB @ 4546.0ft (Original Well Elev)
Project:	WELD COUNTY, COLORADO	MD Reference:	KB @ 4546.0ft (Original Well Elev)
Site:	Anschutz State 5-61-19 SWSW Pad	North Reference:	True
Well:	ANSCHUTZ STATE 5-61-19-6457CH2	Survey Calculation Method:	Minimum Curvature
Wellbore:	Wellbore #1		
Design:	Design #1		

Planned Survey									
Measured Depth (ft)	Inclination (°)	Azimuth (°)	Vertical Depth (ft)	+N/-S (ft)	+E/-W (ft)	Vertical Section (ft)	Dogleg Rate (°/100ft)	Build Rate (°/100ft)	Turn Rate (°/100ft)
4,978.2	7.77	210.75	4,944.0	-440.0	-261.7	-243.8	0.00	0.00	0.00
5,000.0	7.34	210.75	4,965.6	-442.4	-263.2	-245.2	2.00	-2.00	0.00
5,100.0	5.34	210.75	5,065.0	-451.9	-268.8	-250.4	2.00	-2.00	0.00
5,200.0	3.34	210.75	5,164.7	-458.4	-272.7	-254.0	2.00	-2.00	0.00
5,300.0	1.34	210.75	5,264.6	-461.9	-274.8	-256.0	2.00	-2.00	0.00
5,366.9	0.00	89.61	5,331.5	-462.6	-275.2	-256.3	2.00	-2.00	0.00
5,400.0	0.00	89.61	5,364.6	-462.6	-275.2	-256.3	0.00	0.00	0.00
5,500.0	0.00	89.61	5,464.6	-462.6	-275.2	-256.3	0.00	0.00	0.00
5,600.0	0.00	89.61	5,564.6	-462.6	-275.2	-256.3	0.00	0.00	0.00
5,616.9	0.00	89.61	5,581.5	-462.6	-275.2	-256.3	0.00	0.00	0.00
5,700.0	9.97	89.61	5,664.2	-462.5	-268.0	-249.1	12.00	12.00	0.00
5,784.8	20.15	89.61	5,746.0	-462.4	-245.9	-227.1	12.00	12.00	0.00
SHARON SPRINGS									
5,800.0	21.97	89.61	5,760.2	-462.3	-240.5	-221.7	12.00	12.00	0.00
5,897.2	33.63	89.61	5,846.0	-462.0	-195.2	-176.5	12.00	12.00	0.00
NIOBRARA									
5,900.0	33.97	89.61	5,848.3	-462.0	-193.7	-174.9	12.00	12.00	0.00
6,000.0	45.97	89.61	5,924.8	-461.6	-129.6	-110.9	12.00	12.00	0.00
6,100.0	57.97	89.61	5,986.3	-461.1	-50.9	-32.3	12.00	12.00	0.00
6,200.0	69.97	89.61	6,030.1	-460.5	38.8	57.3	12.00	12.00	0.00
6,269.0	78.25	89.61	6,049.0	-460.0	105.1	123.5	12.00	12.00	0.00
TOP C TARGET									
6,300.0	81.97	89.61	6,054.3	-459.8	135.6	154.0	12.00	12.00	0.00
6,367.2	90.03	89.61	6,059.0	-459.4	202.5	220.9	11.99	11.99	0.00
7" Csg - AS 19-6457CH2 LP									
6,400.0	90.03	89.61	6,059.0	-459.1	235.4	253.7	0.01	0.01	0.00
6,500.0	90.03	89.61	6,058.9	-458.5	335.4	353.5	0.00	0.00	0.00
6,600.0	90.03	89.61	6,058.9	-457.8	435.4	453.4	0.00	0.00	0.00
6,700.0	90.03	89.61	6,058.8	-457.1	535.4	553.3	0.00	0.00	0.00
6,800.0	90.03	89.61	6,058.8	-456.5	635.4	653.2	0.00	0.00	0.00
6,900.0	90.03	89.61	6,058.7	-455.8	735.4	753.1	0.00	0.00	0.00
7,000.0	90.03	89.61	6,058.7	-455.1	835.4	853.0	0.00	0.00	0.00
7,100.0	90.03	89.61	6,058.6	-454.4	935.4	952.9	0.00	0.00	0.00
7,200.0	90.03	89.61	6,058.6	-453.8	1,035.4	1,052.8	0.00	0.00	0.00
7,300.0	90.03	89.61	6,058.5	-453.1	1,135.4	1,152.7	0.00	0.00	0.00
7,400.0	90.03	89.61	6,058.5	-452.4	1,235.3	1,252.6	0.00	0.00	0.00
7,500.0	90.03	89.61	6,058.4	-451.7	1,335.3	1,352.4	0.00	0.00	0.00
7,600.0	90.03	89.61	6,058.4	-451.1	1,435.3	1,452.3	0.00	0.00	0.00
7,700.0	90.03	89.61	6,058.3	-450.4	1,535.3	1,552.2	0.00	0.00	0.00
7,800.0	90.03	89.61	6,058.3	-449.7	1,635.3	1,652.1	0.00	0.00	0.00
7,900.0	90.03	89.61	6,058.2	-449.1	1,735.3	1,752.0	0.00	0.00	0.00
8,000.0	90.03	89.61	6,058.1	-448.4	1,835.3	1,851.9	0.00	0.00	0.00
8,100.0	90.03	89.61	6,058.1	-447.7	1,935.3	1,951.8	0.00	0.00	0.00
8,200.0	90.03	89.61	6,058.0	-447.0	2,035.3	2,051.7	0.00	0.00	0.00
8,300.0	90.03	89.61	6,058.0	-446.4	2,135.3	2,151.6	0.00	0.00	0.00
8,400.0	90.03	89.61	6,057.9	-445.7	2,235.3	2,251.4	0.00	0.00	0.00
8,500.0	90.03	89.61	6,057.9	-445.0	2,335.3	2,351.3	0.00	0.00	0.00
8,600.0	90.03	89.61	6,057.8	-444.3	2,435.3	2,451.2	0.00	0.00	0.00
8,700.0	90.03	89.61	6,057.8	-443.7	2,535.3	2,551.1	0.00	0.00	0.00
8,800.0	90.03	89.61	6,057.7	-443.0	2,635.3	2,651.0	0.00	0.00	0.00
8,900.0	90.03	89.61	6,057.7	-442.3	2,735.3	2,750.9	0.00	0.00	0.00
9,000.0	90.03	89.61	6,057.6	-441.7	2,835.3	2,850.8	0.00	0.00	0.00
9,100.0	90.03	89.61	6,057.6	-441.0	2,935.3	2,950.7	0.00	0.00	0.00

Bill Barrett Corp

Planning Report

Database:	Compass	Local Co-ordinate Reference:	Well ANSCHUTZ STATE 5-61-19-6457CH2
Company:	BILL BARRETT CORP	TVD Reference:	KB @ 4546.0ft (Original Well Elev)
Project:	WELD COUNTY, COLORADO	MD Reference:	KB @ 4546.0ft (Original Well Elev)
Site:	Anschutz State 5-61-19 SWSW Pad	North Reference:	True
Well:	ANSCHUTZ STATE 5-61-19-6457CH2	Survey Calculation Method:	Minimum Curvature
Wellbore:	Wellbore #1		
Design:	Design #1		

Planned Survey										
Measured Depth (ft)	Inclination (°)	Azimuth (°)	Vertical Depth (ft)	+N/-S (ft)	+E/-W (ft)	Vertical Section (ft)	Dogleg Rate (°/100ft)	Build Rate (°/100ft)	Turn Rate (°/100ft)	
9,200.0	90.03	89.61	6,057.5	-440.3	3,035.3	3,050.6	0.00	0.00	0.00	
9,300.0	90.03	89.61	6,057.5	-439.6	3,135.3	3,150.5	0.00	0.00	0.00	
9,400.0	90.03	89.61	6,057.4	-439.0	3,235.3	3,250.3	0.00	0.00	0.00	
9,500.0	90.03	89.61	6,057.4	-438.3	3,335.3	3,350.2	0.00	0.00	0.00	
9,600.0	90.03	89.61	6,057.3	-437.6	3,435.3	3,450.1	0.00	0.00	0.00	
9,700.0	90.03	89.61	6,057.3	-436.9	3,535.3	3,550.0	0.00	0.00	0.00	
9,800.0	90.03	89.61	6,057.2	-436.3	3,635.3	3,649.9	0.00	0.00	0.00	
9,900.0	90.03	89.61	6,057.2	-435.6	3,735.3	3,749.8	0.00	0.00	0.00	
10,000.0	90.03	89.61	6,057.1	-434.9	3,835.3	3,849.7	0.00	0.00	0.00	
10,100.0	90.03	89.61	6,057.1	-434.3	3,935.3	3,949.6	0.00	0.00	0.00	
10,200.0	90.03	89.61	6,057.0	-433.6	4,035.3	4,049.5	0.00	0.00	0.00	
10,300.0	90.03	89.61	6,057.0	-432.9	4,135.3	4,149.4	0.00	0.00	0.00	
10,400.0	90.03	89.61	6,056.9	-432.2	4,235.3	4,249.2	0.00	0.00	0.00	
10,500.0	90.03	89.61	6,056.8	-431.6	4,335.3	4,349.1	0.00	0.00	0.00	
10,600.0	90.03	89.61	6,056.8	-430.9	4,435.3	4,449.0	0.00	0.00	0.00	
10,700.0	90.03	89.61	6,056.7	-430.2	4,535.3	4,548.9	0.00	0.00	0.00	
10,800.0	90.03	89.61	6,056.7	-429.5	4,635.3	4,648.8	0.00	0.00	0.00	
10,900.0	90.03	89.61	6,056.6	-428.9	4,735.3	4,748.7	0.00	0.00	0.00	
11,000.0	90.03	89.61	6,056.6	-428.2	4,835.3	4,848.6	0.00	0.00	0.00	
11,100.0	90.03	89.61	6,056.5	-427.5	4,935.3	4,948.5	0.00	0.00	0.00	
11,200.0	90.03	89.61	6,056.5	-426.8	5,035.3	5,048.4	0.00	0.00	0.00	
11,300.0	90.03	89.61	6,056.4	-426.2	5,135.3	5,148.3	0.00	0.00	0.00	
11,400.0	90.03	89.61	6,056.4	-425.5	5,235.3	5,248.1	0.00	0.00	0.00	
11,500.0	90.03	89.61	6,056.3	-424.8	5,335.3	5,348.0	0.00	0.00	0.00	
11,600.0	90.03	89.61	6,056.3	-424.2	5,435.3	5,447.9	0.00	0.00	0.00	
11,700.0	90.03	89.61	6,056.2	-423.5	5,535.3	5,547.8	0.00	0.00	0.00	
11,800.0	90.03	89.61	6,056.2	-422.8	5,635.2	5,647.7	0.00	0.00	0.00	
11,900.0	90.03	89.61	6,056.1	-422.1	5,735.2	5,747.6	0.00	0.00	0.00	
12,000.0	90.03	89.61	6,056.1	-421.5	5,835.2	5,847.5	0.00	0.00	0.00	
12,100.0	90.03	89.61	6,056.0	-420.8	5,935.2	5,947.4	0.00	0.00	0.00	
12,200.0	90.03	89.61	6,056.0	-420.1	6,035.2	6,047.3	0.00	0.00	0.00	
12,300.0	90.03	89.61	6,055.9	-419.4	6,135.2	6,147.1	0.00	0.00	0.00	
12,400.0	90.03	89.61	6,055.9	-418.8	6,235.2	6,247.0	0.00	0.00	0.00	
12,500.0	90.03	89.61	6,055.8	-418.1	6,335.2	6,346.9	0.00	0.00	0.00	
12,600.0	90.03	89.61	6,055.8	-417.4	6,435.2	6,446.8	0.00	0.00	0.00	
12,700.0	90.03	89.61	6,055.7	-416.8	6,535.2	6,546.7	0.00	0.00	0.00	
12,800.0	90.03	89.61	6,055.6	-416.1	6,635.2	6,646.6	0.00	0.00	0.00	
12,900.0	90.03	89.61	6,055.6	-415.4	6,735.2	6,746.5	0.00	0.00	0.00	
13,000.0	90.03	89.61	6,055.5	-414.7	6,835.2	6,846.4	0.00	0.00	0.00	
13,100.0	90.03	89.61	6,055.5	-414.1	6,935.2	6,946.3	0.00	0.00	0.00	
13,200.0	90.03	89.61	6,055.4	-413.4	7,035.2	7,046.2	0.00	0.00	0.00	
13,300.0	90.03	89.61	6,055.4	-412.7	7,135.2	7,146.0	0.00	0.00	0.00	
13,400.0	90.03	89.61	6,055.3	-412.0	7,235.2	7,245.9	0.00	0.00	0.00	
13,500.0	90.03	89.61	6,055.3	-411.4	7,335.2	7,345.8	0.00	0.00	0.00	
13,600.0	90.03	89.61	6,055.2	-410.7	7,435.2	7,445.7	0.00	0.00	0.00	
13,700.0	90.03	89.61	6,055.2	-410.0	7,535.2	7,545.6	0.00	0.00	0.00	
13,800.0	90.03	89.61	6,055.1	-409.4	7,635.2	7,645.5	0.00	0.00	0.00	
13,900.0	90.03	89.61	6,055.1	-408.7	7,735.2	7,745.4	0.00	0.00	0.00	
14,000.0	90.03	89.61	6,055.0	-408.0	7,835.2	7,845.3	0.00	0.00	0.00	
14,100.0	90.03	89.61	6,055.0	-407.3	7,935.2	7,945.2	0.00	0.00	0.00	
14,200.0	90.03	89.61	6,054.9	-406.7	8,035.2	8,045.1	0.00	0.00	0.00	
14,300.0	90.03	89.61	6,054.9	-406.0	8,135.2	8,144.9	0.00	0.00	0.00	
14,400.0	90.03	89.61	6,054.8	-405.3	8,235.2	8,244.8	0.00	0.00	0.00	
14,500.0	90.03	89.61	6,054.8	-404.6	8,335.2	8,344.7	0.00	0.00	0.00	

Bill Barrett Corp

Planning Report

Database:	Compass	Local Co-ordinate Reference:	Well ANSCHUTZ STATE 5-61-19-6457CH2
Company:	BILL BARRETT CORP	TVD Reference:	KB @ 4546.0ft (Original Well Elev)
Project:	WELD COUNTY, COLORADO	MD Reference:	KB @ 4546.0ft (Original Well Elev)
Site:	Anschutz State 5-61-19 SWSW Pad	North Reference:	True
Well:	ANSCHUTZ STATE 5-61-19-6457CH2	Survey Calculation Method:	Minimum Curvature
Wellbore:	Wellbore #1		
Design:	Design #1		

Planned Survey

Measured Depth (ft)	Inclination (°)	Azimuth (°)	Vertical Depth (ft)	+N/-S (ft)	+E/-W (ft)	Vertical Section (ft)	Dogleg Rate (°/100ft)	Build Rate (°/100ft)	Turn Rate (°/100ft)
14,600.0	90.03	89.61	6,054.7	-404.0	8,435.2	8,444.6	0.00	0.00	0.00
14,700.0	90.03	89.61	6,054.7	-403.3	8,535.2	8,544.5	0.00	0.00	0.00
14,800.0	90.03	89.61	6,054.6	-402.6	8,635.2	8,644.4	0.00	0.00	0.00
14,900.0	90.03	89.61	6,054.6	-402.0	8,735.2	8,744.3	0.00	0.00	0.00
15,000.0	90.03	89.61	6,054.5	-401.3	8,835.2	8,844.2	0.00	0.00	0.00
15,100.0	90.03	89.61	6,054.5	-400.6	8,935.2	8,944.1	0.00	0.00	0.00
15,200.0	90.03	89.61	6,054.4	-399.9	9,035.2	9,043.9	0.00	0.00	0.00
15,300.0	90.03	89.61	6,054.3	-399.3	9,135.2	9,143.8	0.00	0.00	0.00
15,400.0	90.03	89.61	6,054.3	-398.6	9,235.2	9,243.7	0.00	0.00	0.00
15,500.0	90.03	89.61	6,054.2	-397.9	9,335.2	9,343.6	0.00	0.00	0.00
15,600.0	90.03	89.61	6,054.2	-397.2	9,435.2	9,443.5	0.00	0.00	0.00
15,700.0	90.03	89.61	6,054.1	-396.6	9,535.2	9,543.4	0.00	0.00	0.00
15,800.0	90.03	89.61	6,054.1	-395.9	9,635.2	9,643.3	0.00	0.00	0.00
15,900.0	90.03	89.61	6,054.0	-395.2	9,735.2	9,743.2	0.00	0.00	0.00
15,967.9	90.03	89.61	6,054.0	-394.8	9,803.1	9,811.0	0.00	0.00	0.00

AS 19-6457CH2 PBHL

Casing Points

Measured Depth (ft)	Vertical Depth (ft)	Name	Casing Diameter (")	Hole Diameter (")
6,367.2	6,059.0	7" Csg	7	8-3/4

Formations

Measured Depth (ft)	Vertical Depth (ft)	Name	Lithology	Dip (°)	Dip Direction (°)
0.0	0.0	FOX HILLS BASE		-0.03	89.61
4,304.0	4,276.0	SHANNON		-0.03	89.61
5,784.8	5,746.0	SHARON SPRINGS		-0.03	89.61
5,897.2	5,846.0	NIOBRARA		-0.03	89.61
6,269.0	6,049.0	TOP C TARGET		-0.03	89.61
	6,078.0	BASE C TARGET		-0.03	89.61