

T5N, R61W, 6th P.M.

BILL BARRETT CORPORATION

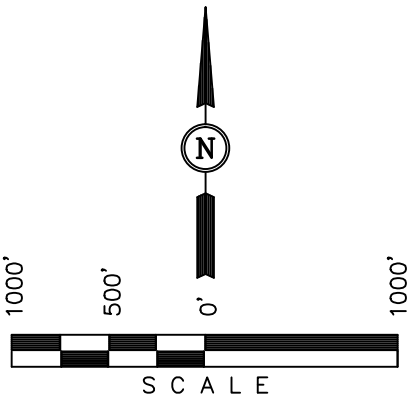
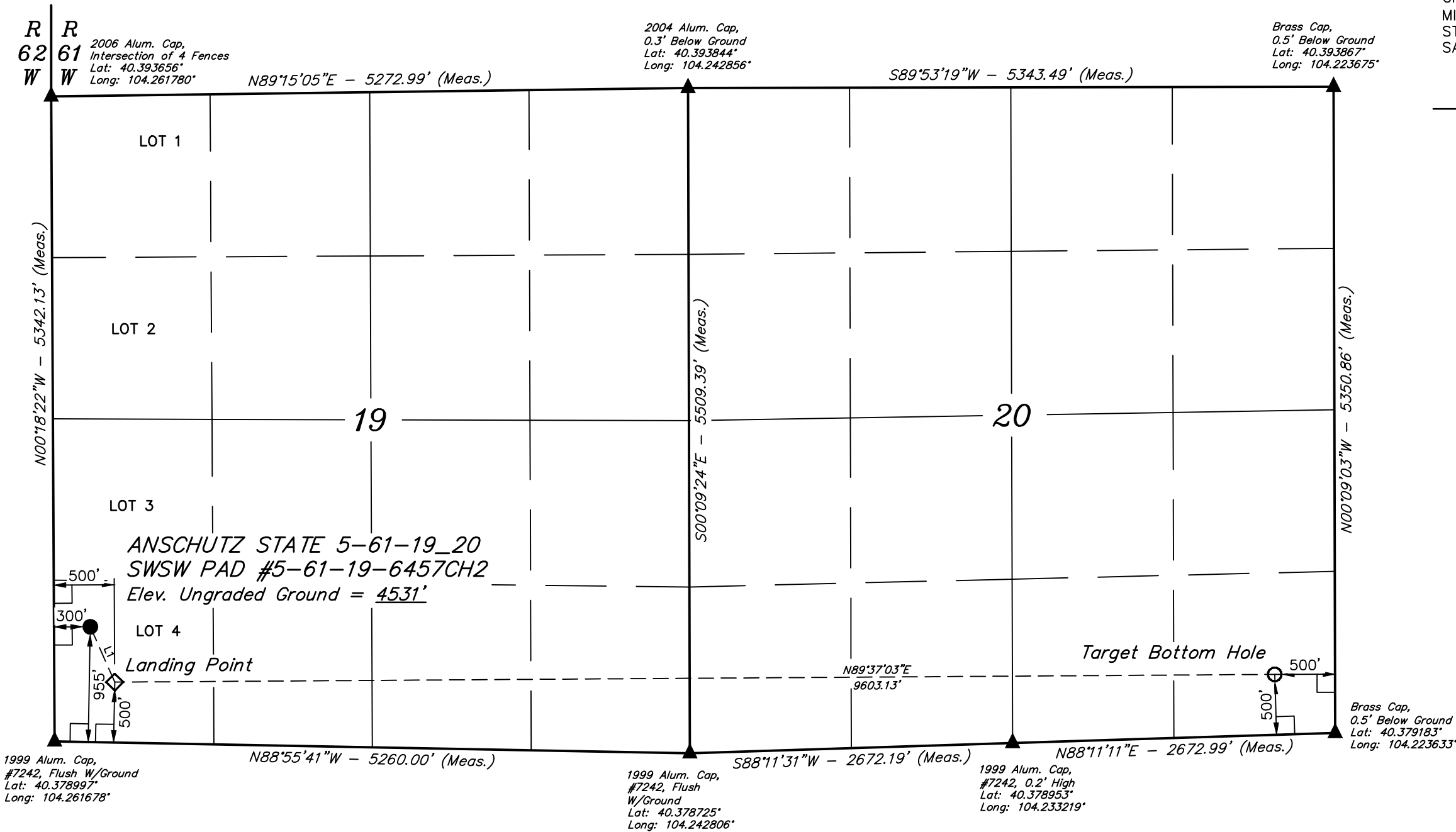
Well location, ANSCHUTZ STATE 5-61-19\_20  
SWSW PAD #5-61-19-6457CH2, located as shown  
in the LOT 4 of Section 19, T5N, R61W, 6th P.M.,  
Weld County, Colorado.

BASIS OF ELEVATION

SPOT ELEVATION LOCATED AT THE NORTHEAST CORNER OF  
SECTION 24, T5N, R62W, 6th. P.M. TAKEN FROM THE POINT  
OF ROCKS, QUADRANGLE, COLORADO, WELD COUNTY, 7.5  
MINUTE QUAD (TOPOGRAPHIC MAP) PUBLISHED BY THE UNITED  
STATES DEPARTMENT OF THE INTERIOR, GEOLOGICAL SURVEY.  
SAID ELEVATION IS MARKED AS BEING 4530 FEET.

BASIS OF BEARINGS

BASIS OF BEARINGS IS A G.P.S. OBSERVATION.



LINE TABLE		
LINE	DIRECTION	LENGTH
L1	S23°48'25"E	501.53'

CERTIFICATE  
THIS IS TO CERTIFY THAT THE ABOVE PLAT WAS PREPARED FROM  
FIELD NOTES OF ACTUAL SURVEYS MADE BY ME OR UNDER MY  
SUPERVISION AND THAT THE SAME ARE TRUE AND CORRECT TO THE  
BEST OF MY KNOWLEDGE AND BELIEF.  
REGISTERED LAND SURVEYOR  
REGISTRATION NO. 28285  
STATE OF COLORADO  
03-04-14

LEGEND:

- └─┘ = 90° SYMBOL
- = PROPOSED WELL HEAD.
- ◇ = PROPOSED LANDING POINT.
- = PROPOSED TARGET BOTTOM HOLE.
- ▲ = SECTION CORNERS LOCATED.

PDOP = 1.4

NAD 83 (TARGET BOTTOM HOLE)	NAD 83 (LANDING POINT)	NAD 83 (SURFACE LOCATION)
LATITUDE = 40°22'49.85" (40.380514)	LATITUDE = 40°22'49.23" (40.380342)	LATITUDE = 40°22'53.77" (40.381603)
LONGITUDE = 104°13'31.55" (104.225431)	LONGITUDE = 104°15'35.61" (104.259892)	LONGITUDE = 104°15'38.23" (104.260619)
NAD 27 (TARGET BOTTOM HOLE)	NAD 27 (LANDING POINT)	NAD 27 (SURFACE LOCATION)
LATITUDE = 40°22'49.91" (40.380531)	LATITUDE = 40°22'49.30" (40.380361)	LATITUDE = 40°22'53.83" (40.381619)
LONGITUDE = 104°13'29.73" (104.224925)	LONGITUDE = 104°15'33.79" (104.259386)	LONGITUDE = 104°15'36.41" (104.260114)
STATE PLANE NAD 83	STATE PLANE NAD 83	STATE PLANE NAD 83
N: 1384013.17 E: 3355070.32	N: 1383815.05 E: 3345471.73	N: 1384270.92 E: 3345262.95
STATE PLANE NAD 27	STATE PLANE NAD 27	STATE PLANE NAD 27
N: 384014.92 E: 2355220.54	N: 383816.83 E: 2345621.75	N: 384272.68 E: 2345412.97

UINTAH ENGINEERING & LAND SURVEYING		
85 SOUTH 200 EAST - VERNAL, UTAH 84078		
(435) 789-1017		
SCALE 1" = 1000'	DATE SURVEYED: 12-23-13	DATE DRAWN: 01-08-14
PARTY DALLAS NIELSEN G.W. J.W.	REFERENCES G.L.O. PLAT	
WEATHER COLD	FILE BILL BARRETT CORPORATION	