



Cathedral Energy Services

1949 N. Pyrite Rd
Casper, WY 82604

135410

5":100' - MD

9/13/2013 11:16:24 AM

Oper. Company: Whiting Oil and Gas

Country: USA

State / Province: Colorado

County / Parish: Weld

Started: 09/09/2013 06:00 PM

API/UWI: 05-123-37697

Field: DJ Basin

Well: Razor 27K-3408B

Rig: Cade 23

Ended:

Gamma Log

Section Plan: 175.58

Magnetic North: 8.15

Gamma Attenuation Factor:

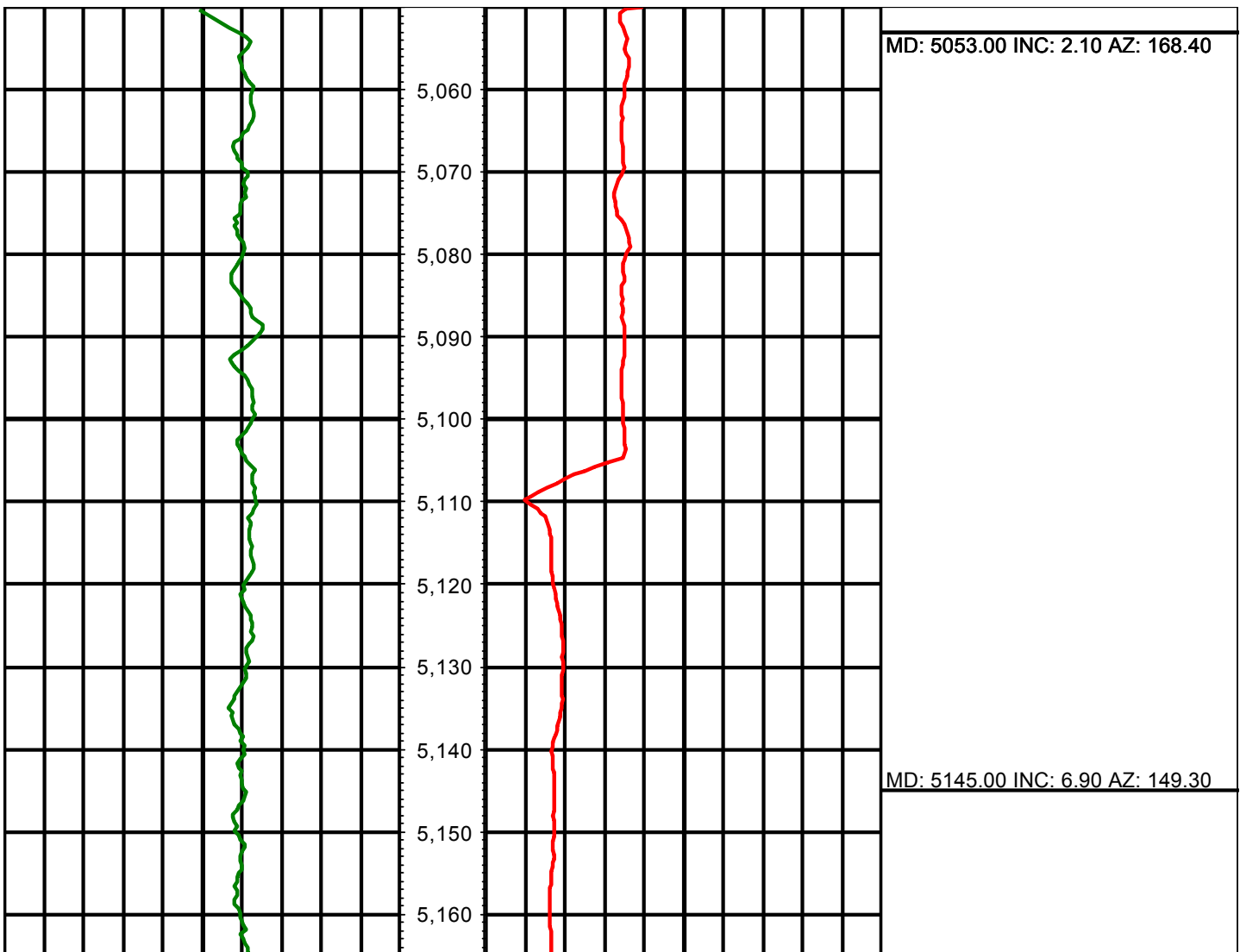
1594' - 6061' - 4.11

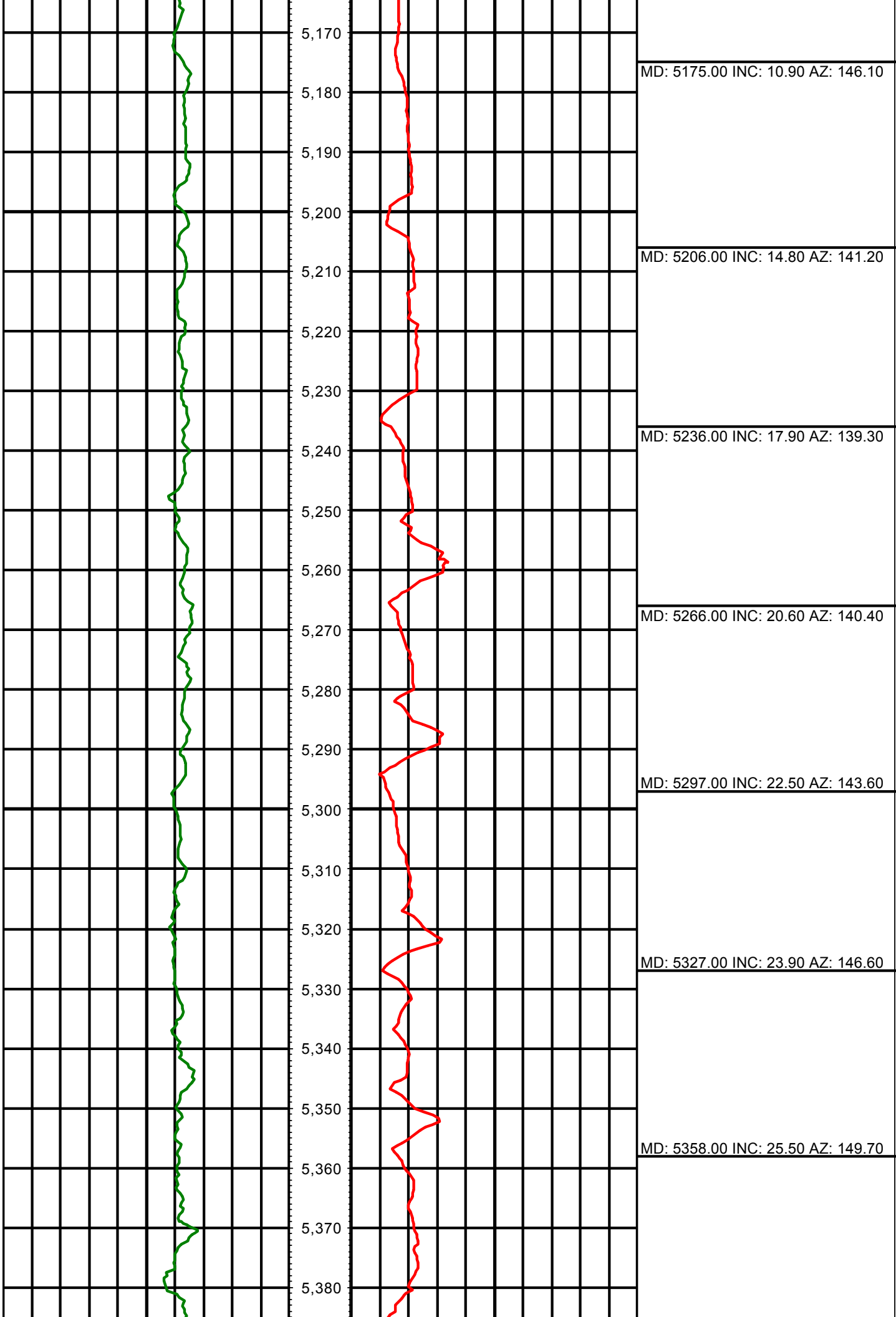
6061' - Current - 3.13

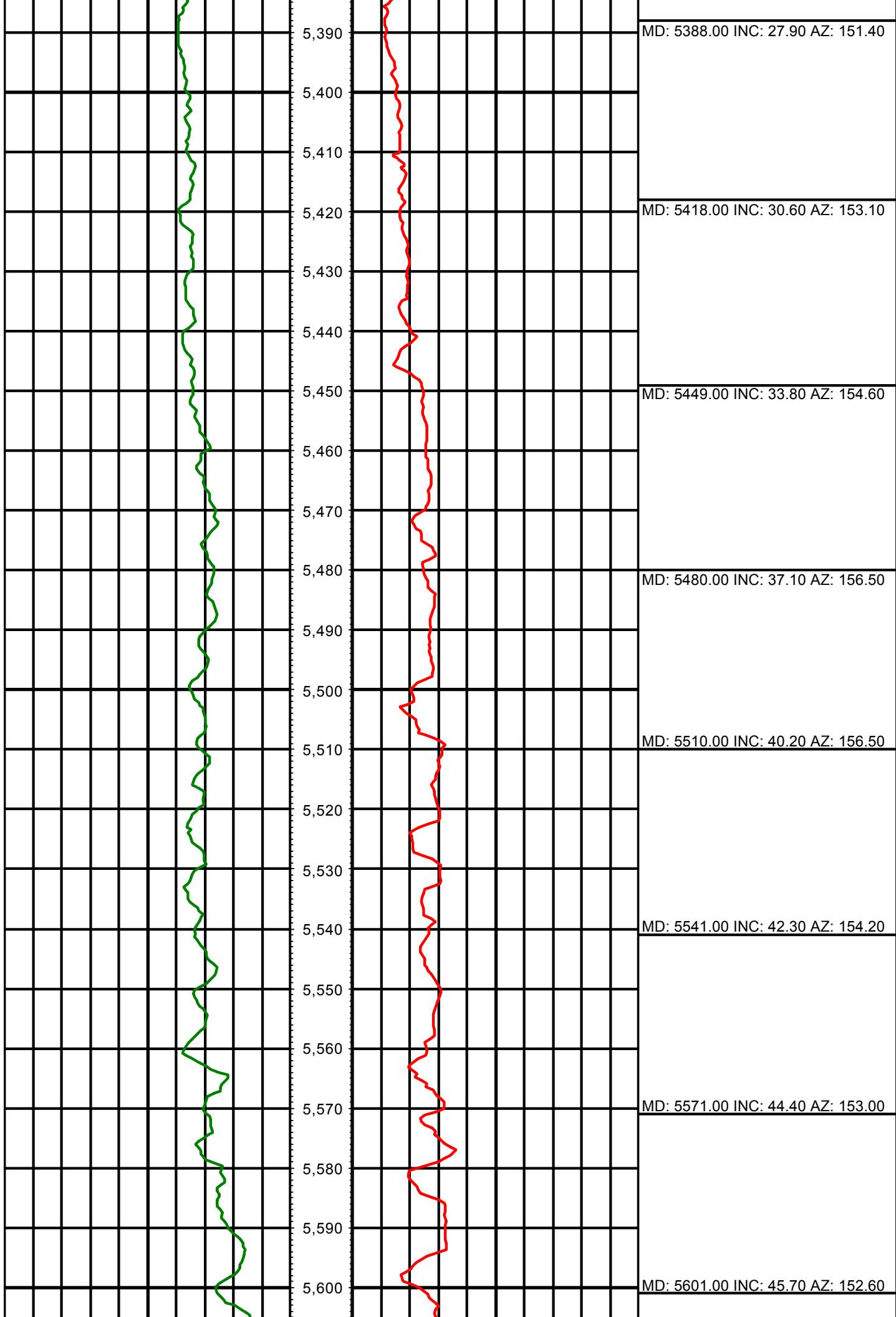
Gamma Averaging: 7%

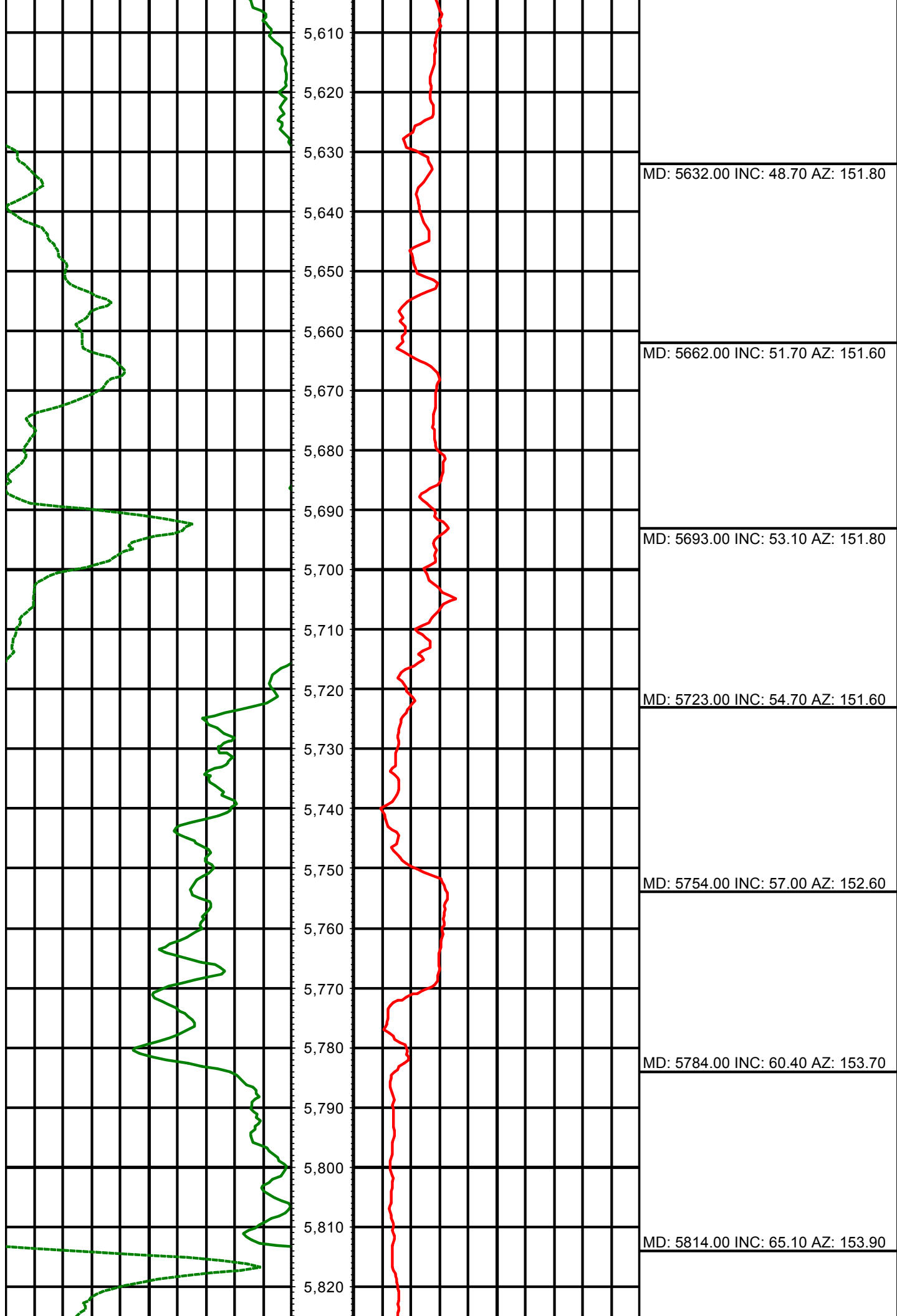
All interpretations are opinions based on inferences from electrical or other measurements and we cannot and do not guarantee the accuracy or correctness of any interpretation, and we shall not except in the case of gross or willful negligence on our part, be liable or responsible for any loss, cost damages or expenses incurred or sustained by anyone resulting from an interpretation made by any of our officers, agents, or employees.

0.00 Gamma Ray (API) 150.00 MD 0.00 ROP (FT/HR) 700.00 Surveys (MD/INC/AZ)
150.00 2 300.00 FT









MD: 5632.00 INC: 48.70 AZ: 151.80

MD: 5662.00 INC: 51.70 AZ: 151.60

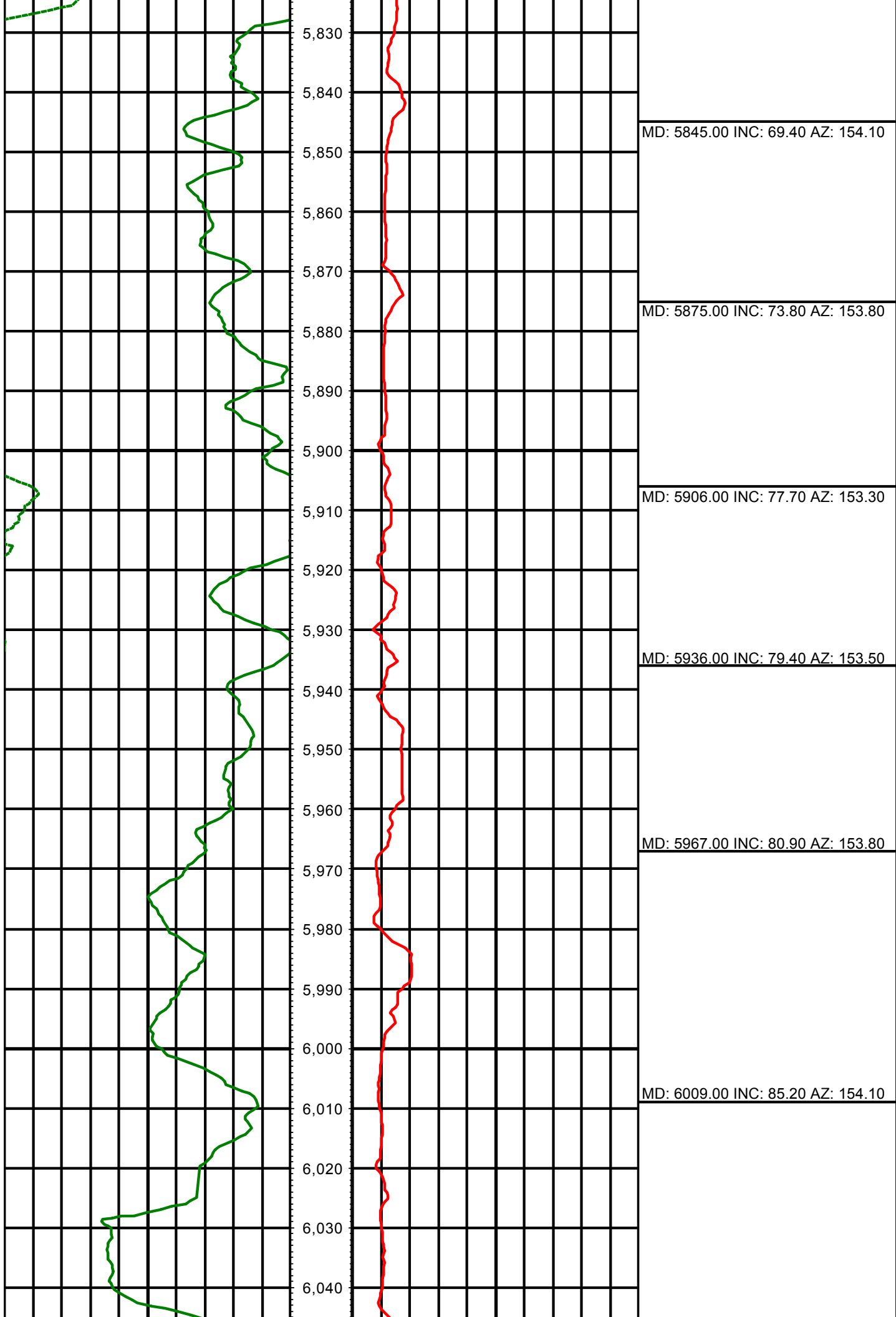
MD: 5693.00 INC: 53.10 AZ: 151.80

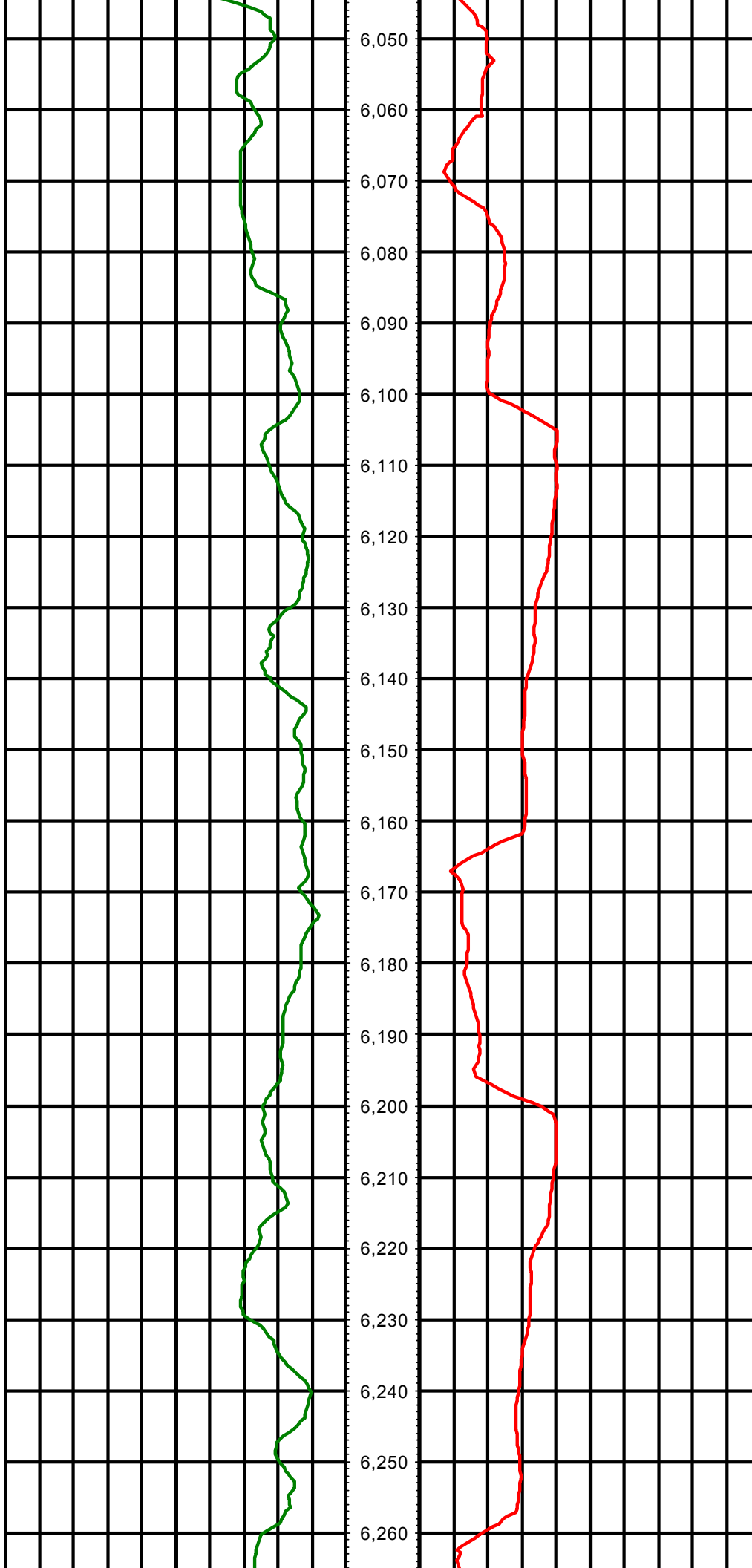
MD: 5723.00 INC: 54.70 AZ: 151.60

MD: 5754.00 INC: 57.00 AZ: 152.60

MD: 5784.00 INC: 60.40 AZ: 153.70

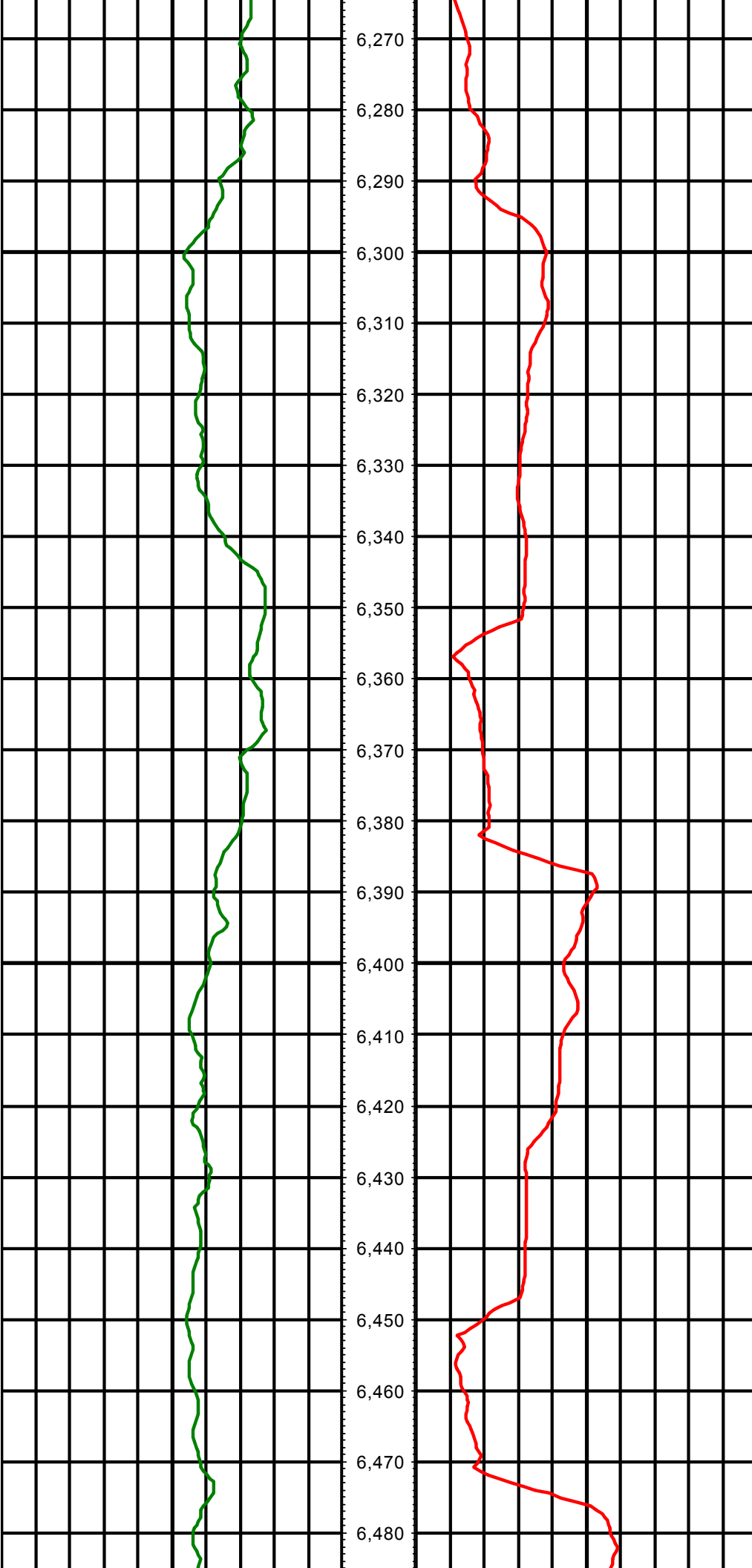
MD: 5814.00 INC: 65.10 AZ: 153.90





MD: 6111.00 INC: 90.20 AZ: 152.10

MD: 6206.00 INC: 90.60 AZ: 157.60



MD: 6301.00 INC: 91.50 AZ: 162.70

MD: 6396.00 INC: 89.60 AZ: 167.20



MD: 6491.00 INC: 91.00 AZ: 170.30

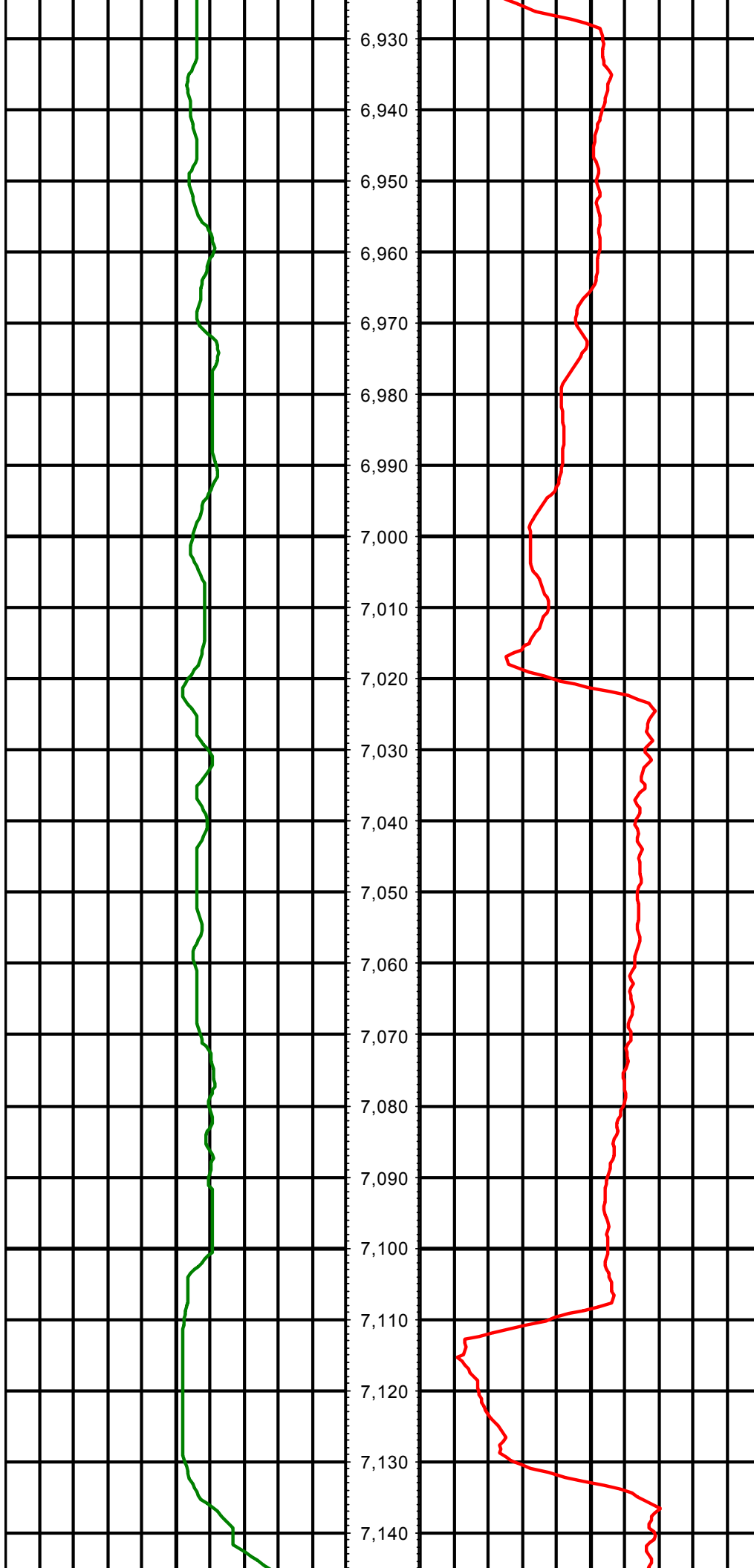
MD: 6585.00 INC: 88.80 AZ: 174.00

MD: 6680.00 INC: 90.70 AZ: 177.80



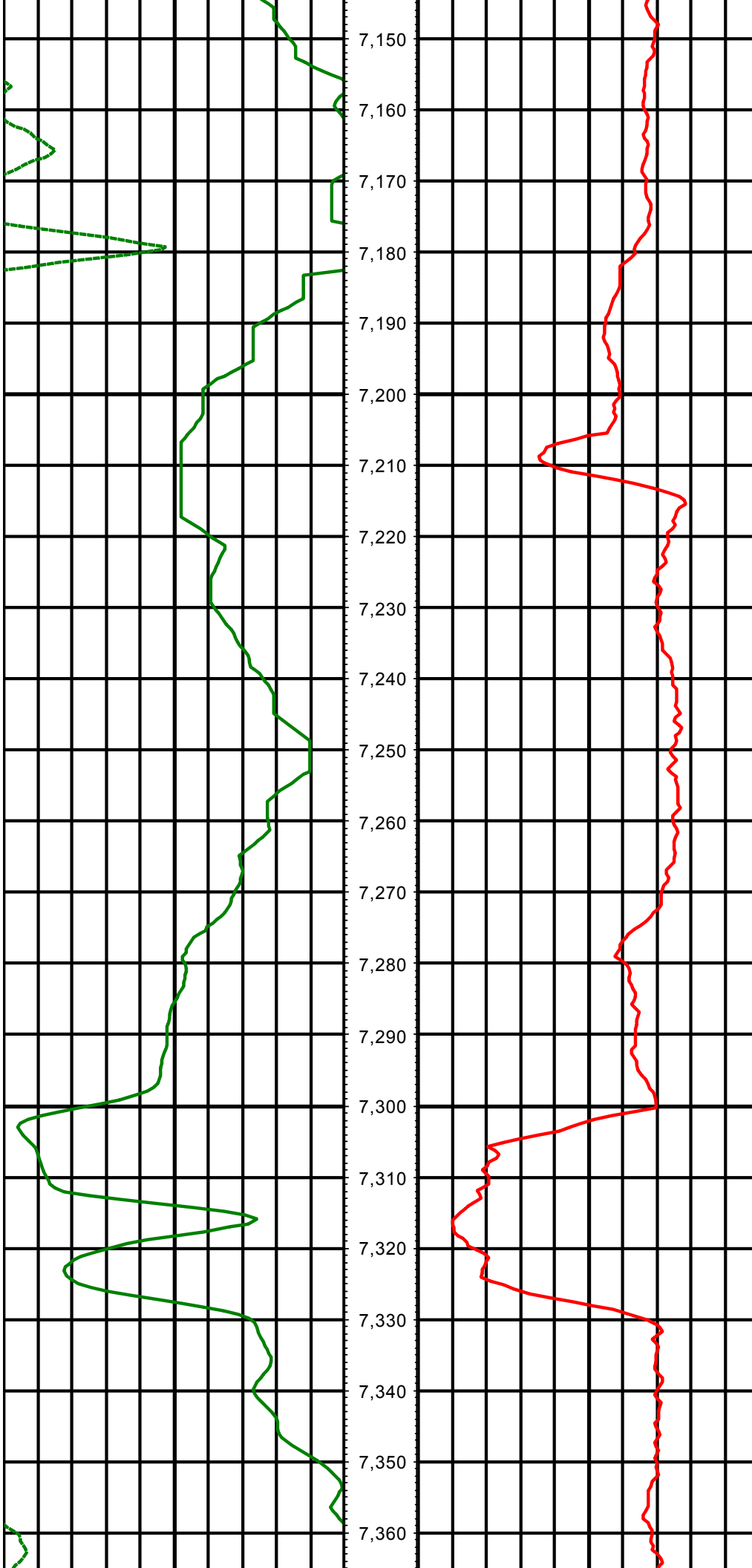
MD: 6775.00 INC: 89.50 AZ: 182.40

MD: 6870.00 INC: 90.10 AZ: 182.40



MD: 6965.00 INC: 90.00 AZ: 182.40

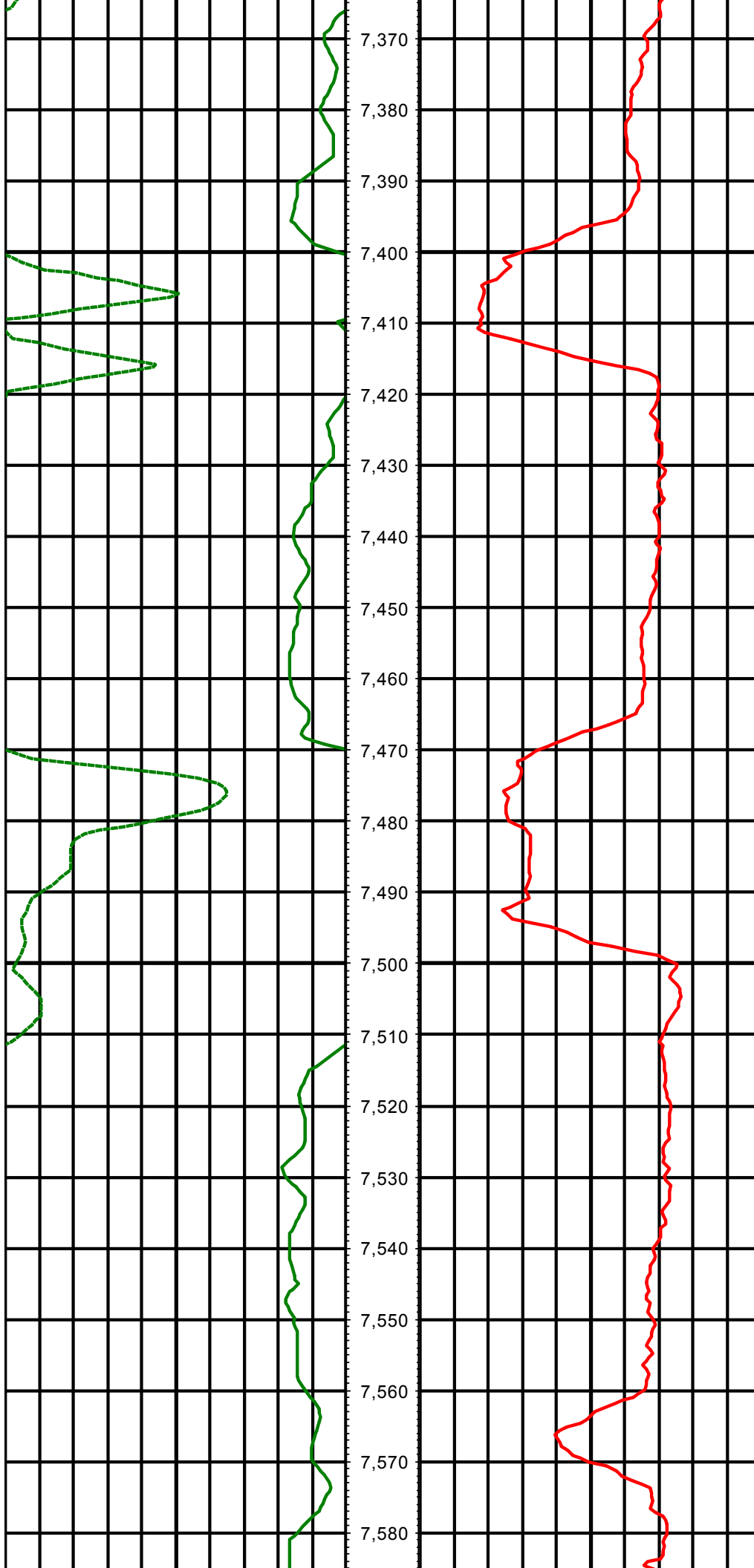
MD: 7060.00 INC: 89.40 AZ: 182.70



MD: 7154.00 INC: 92.00 AZ: 181.40

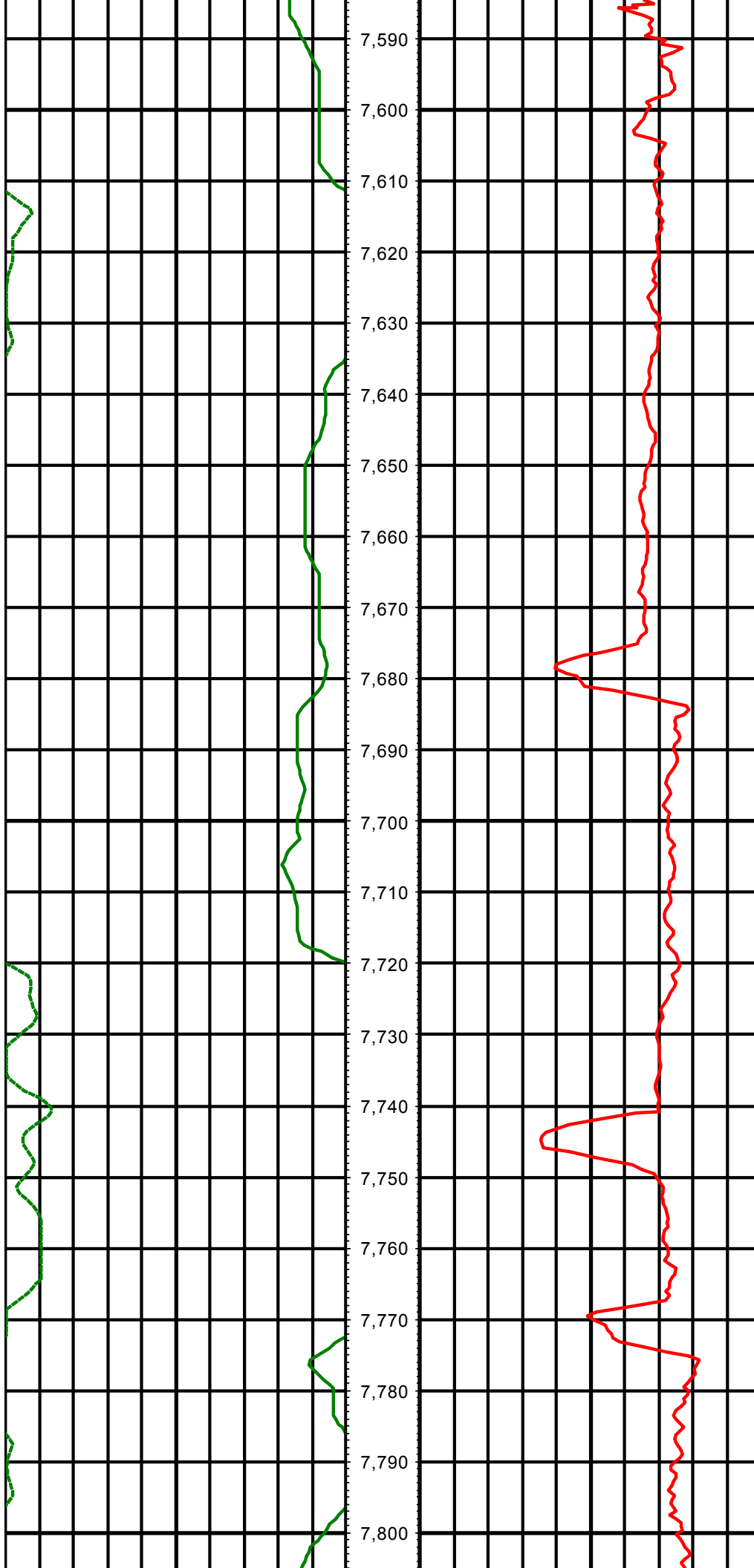
MD: 7249.00 INC: 92.10 AZ: 181.40

MD: 7344.00 INC: 91.60 AZ: 179.80



MD: 7439.00 INC: 89.40 AZ: 178.90

MD: 7533.00 INC: 90.00 AZ: 179.60



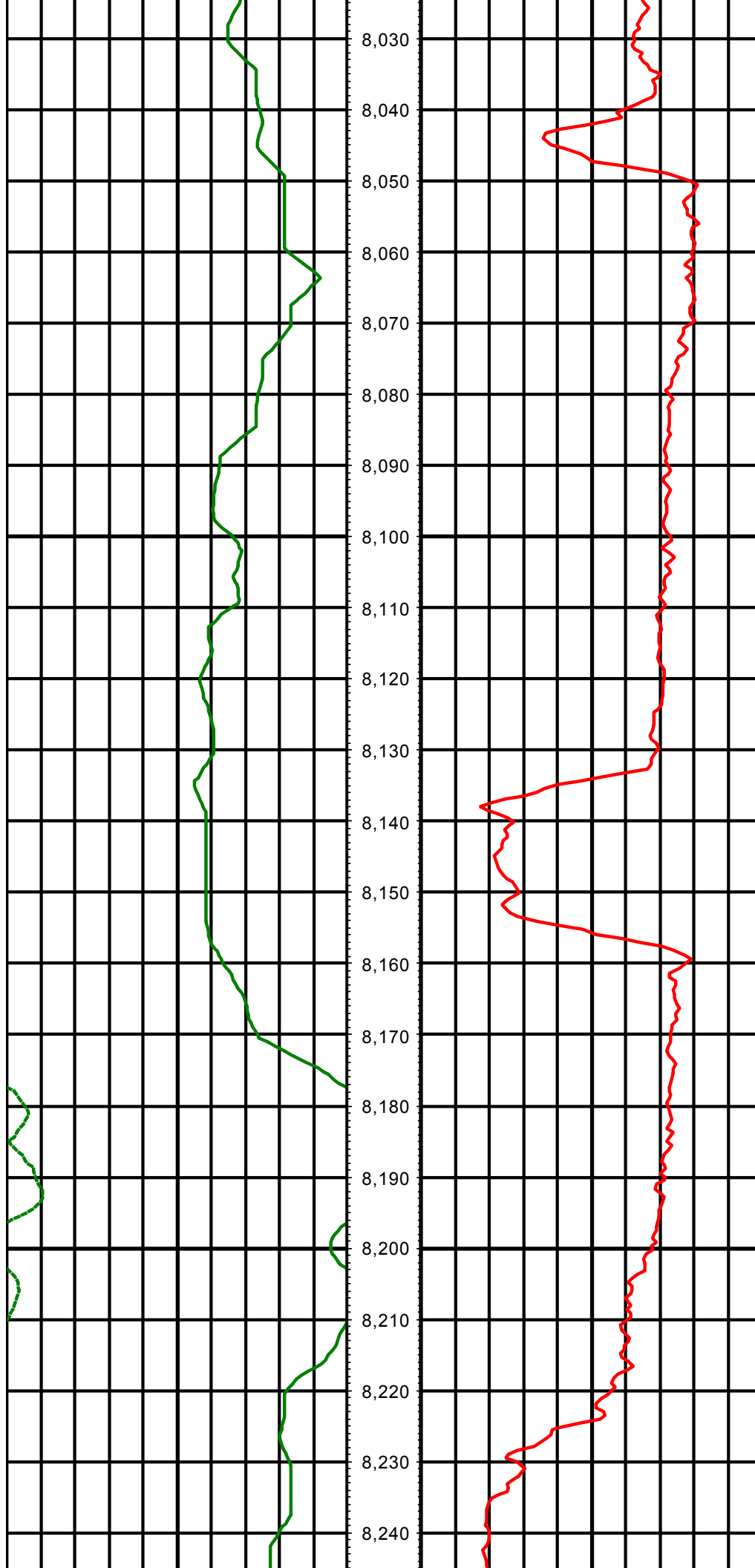
MD: 7625.00 INC: 89.50 AZ: 179.40

MD: 7717.00 INC: 89.80 AZ: 179.00

MD: 7808.00 INC: 89.10 AZ: 178.60

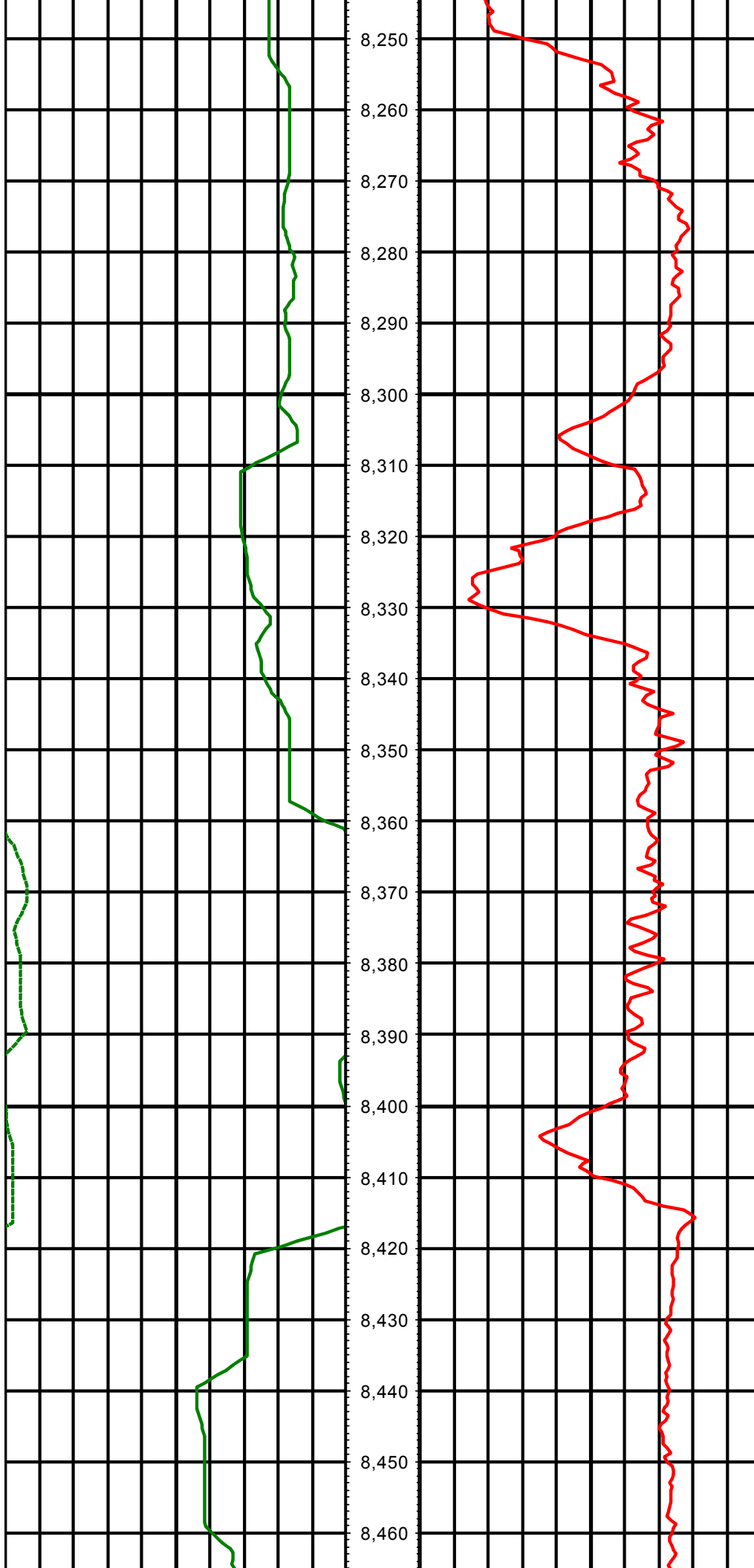
MD: 7900.00 INC: 89.00 AZ: 177.90

MD: 7991.00 INC: 88.70 AZ: 177.30



MD: 8083.00 INC: 88.30 AZ: 176.90

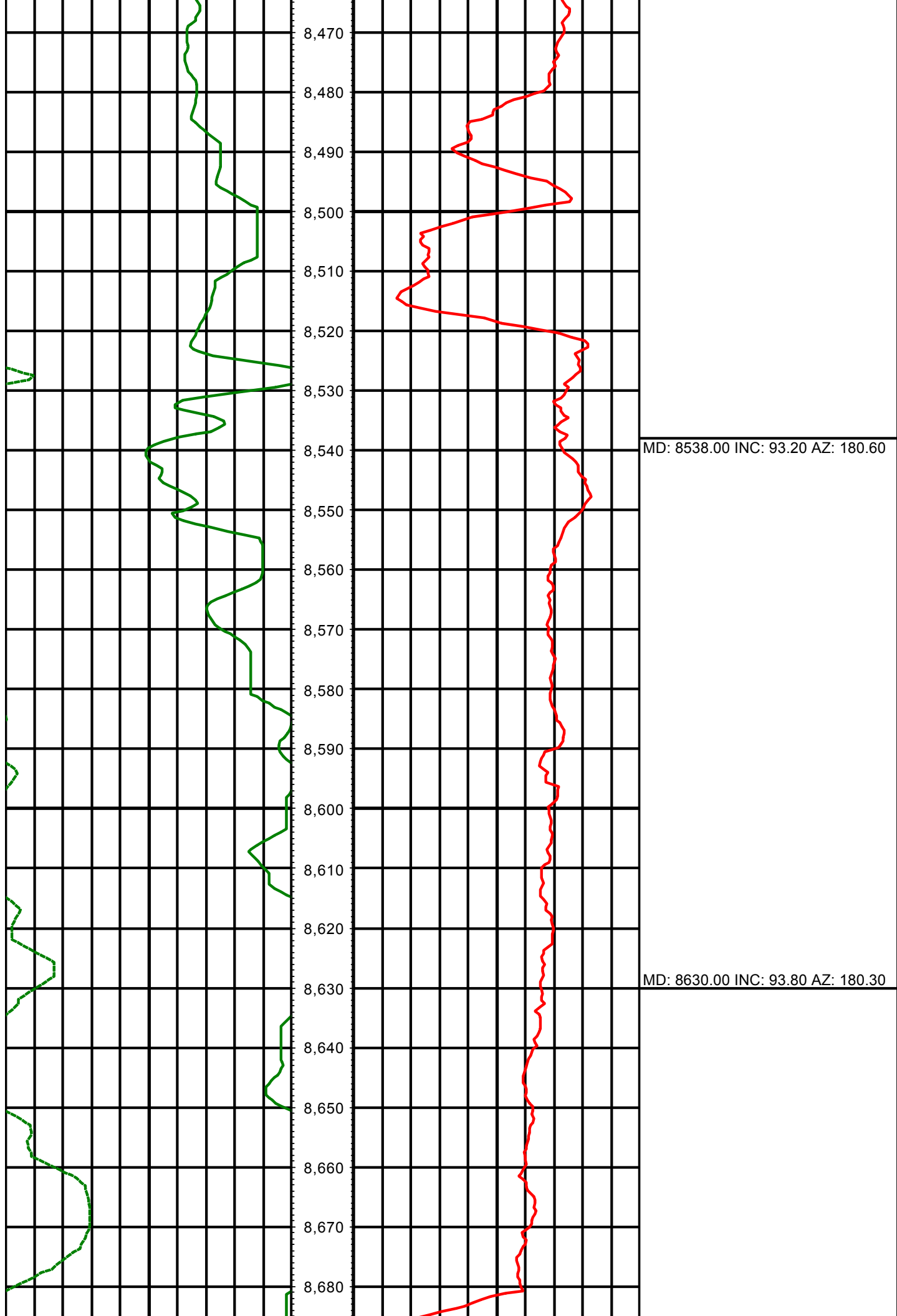
MD: 8174.00 INC: 87.90 AZ: 177.10

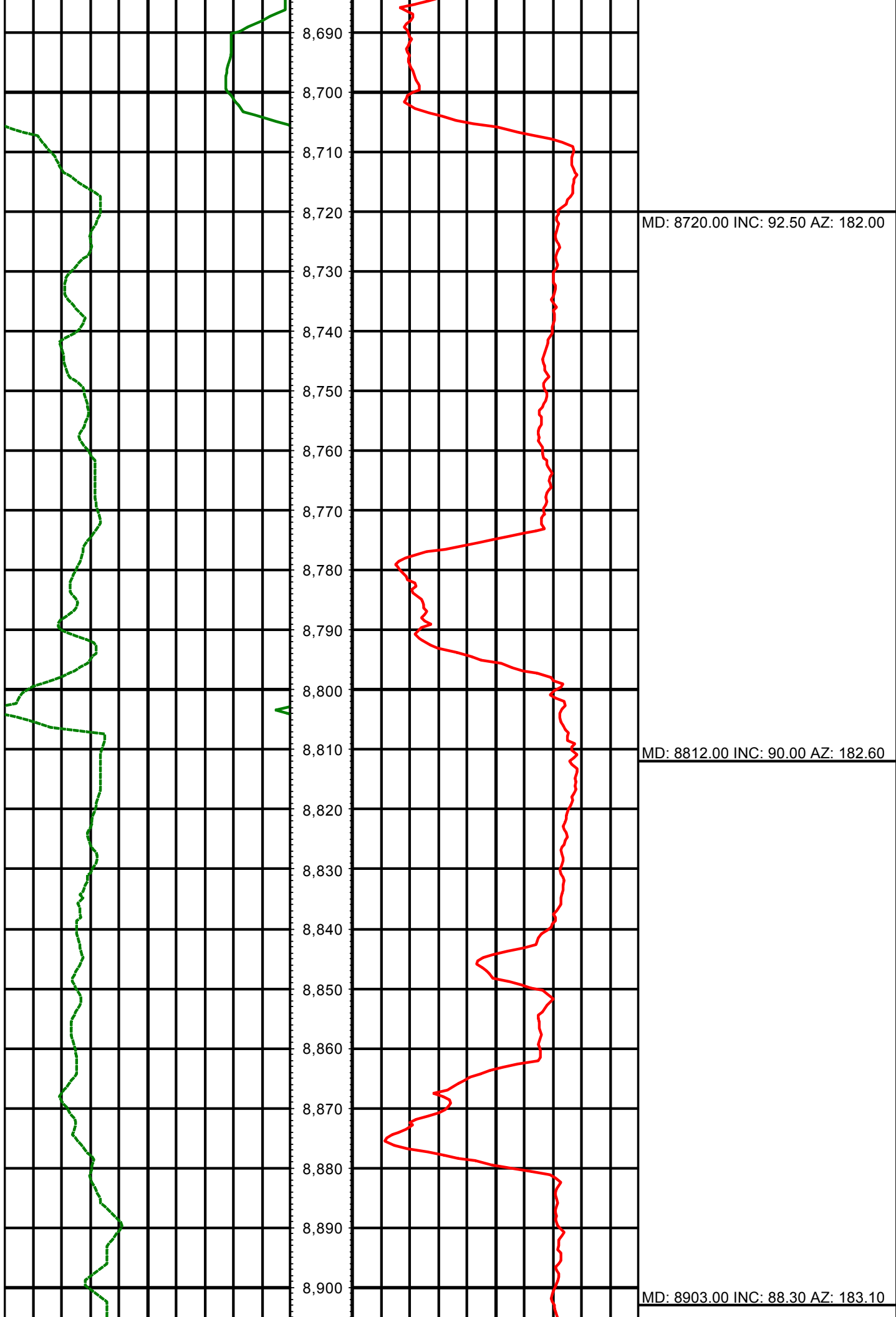


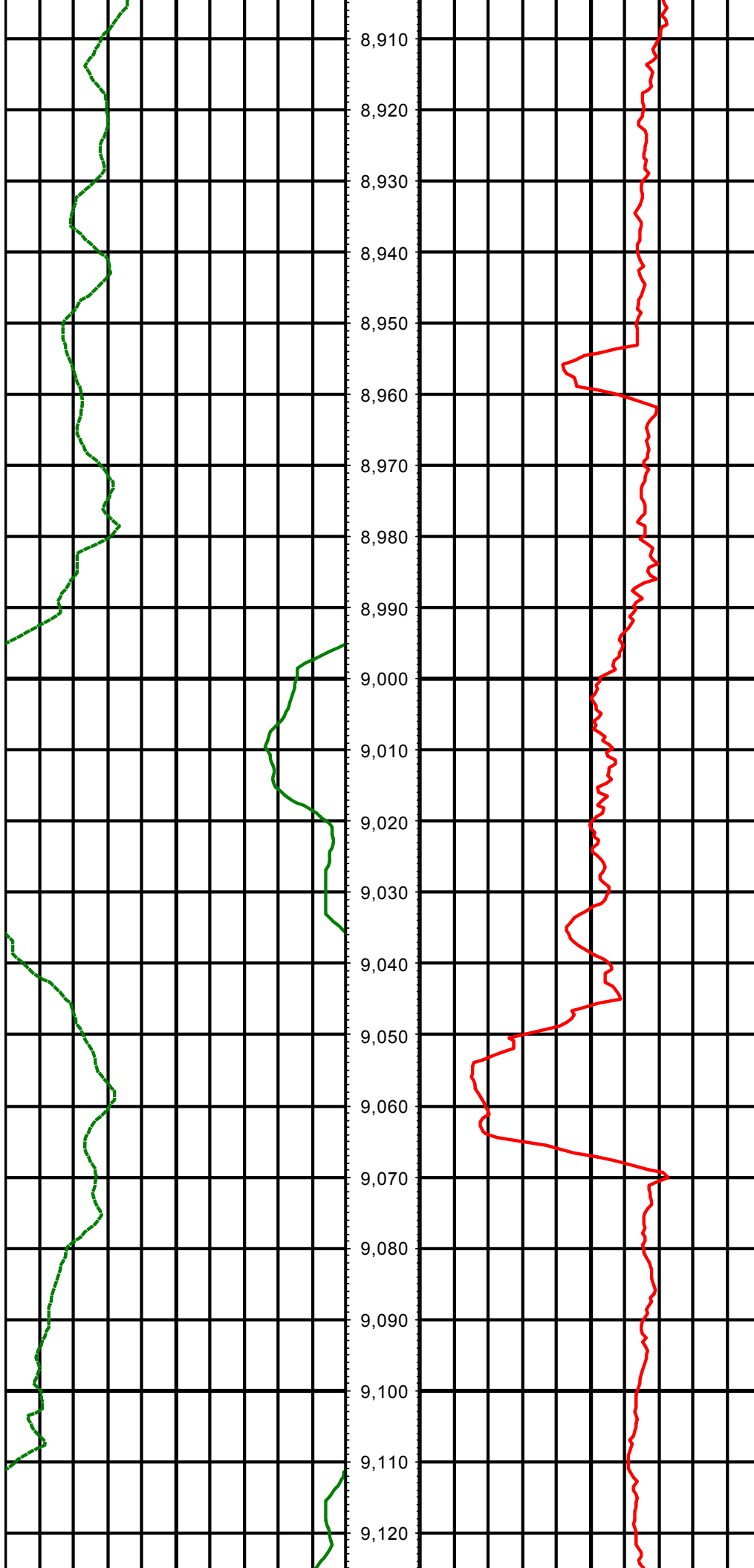
MD: 8265.00 INC: 89.60 AZ: 179.10

MD: 8356.00 INC: 91.00 AZ: 179.40

MD: 8447.00 INC: 90.90 AZ: 178.50

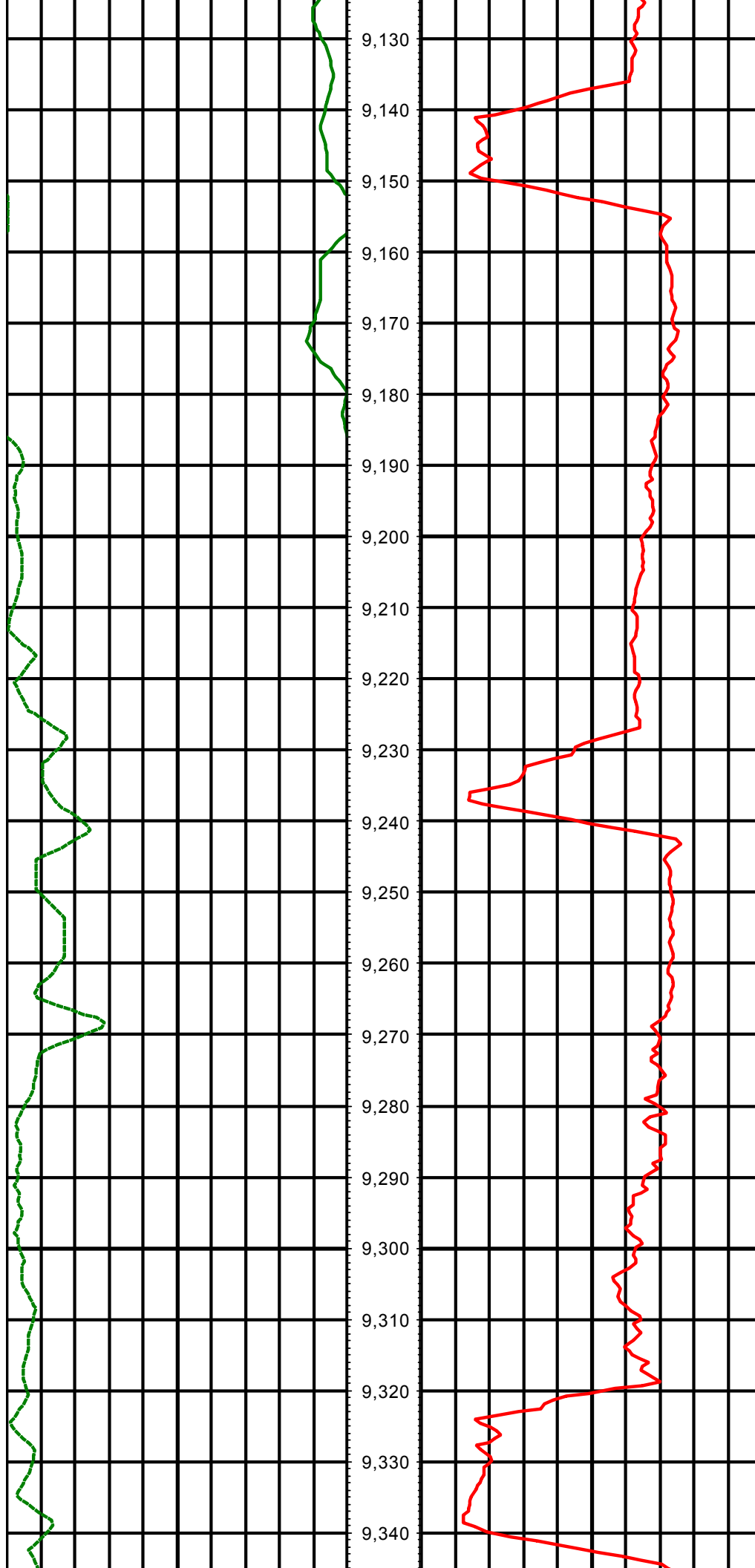






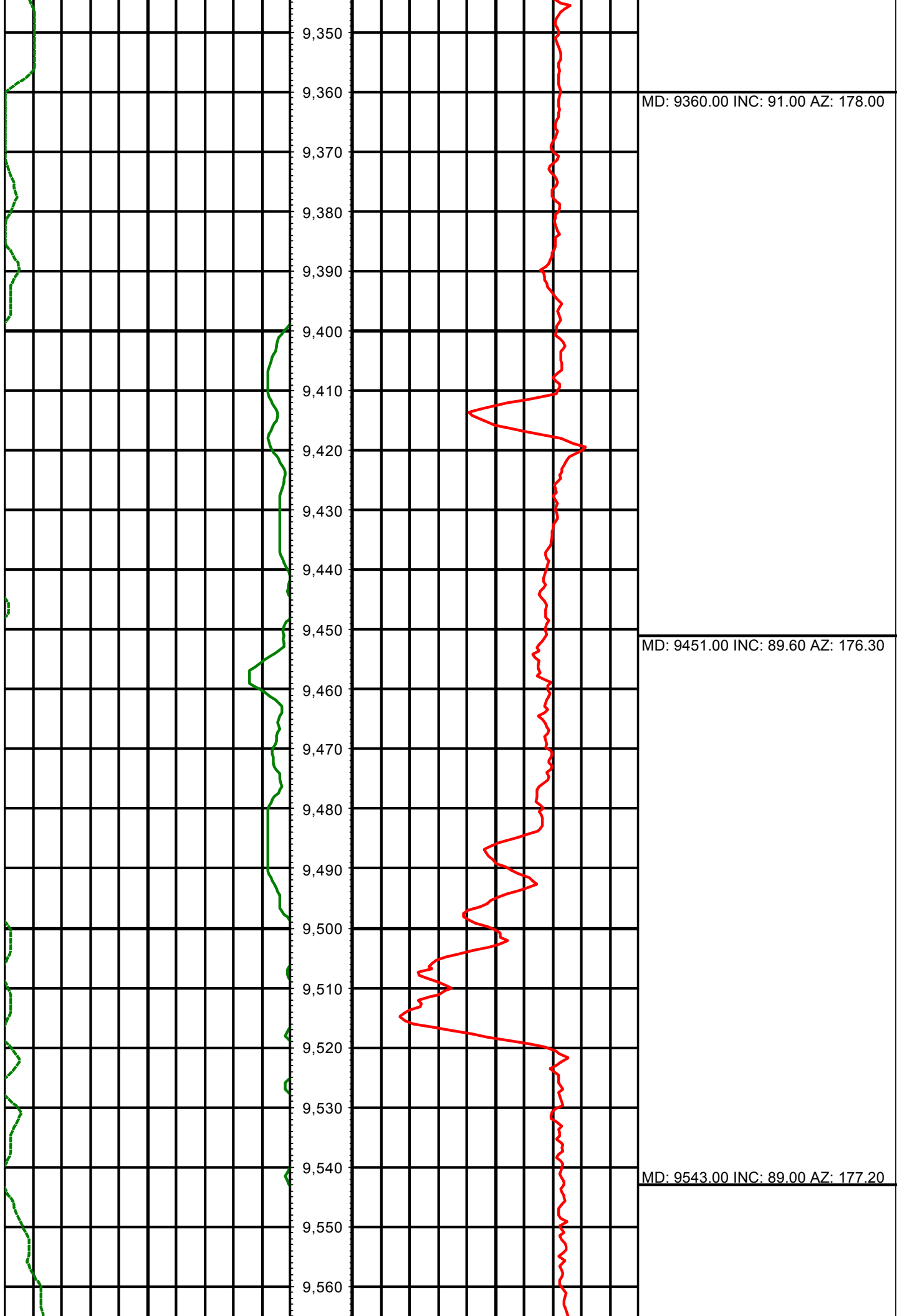
MD: 8994.00 INC: 88.00 AZ: 182.50

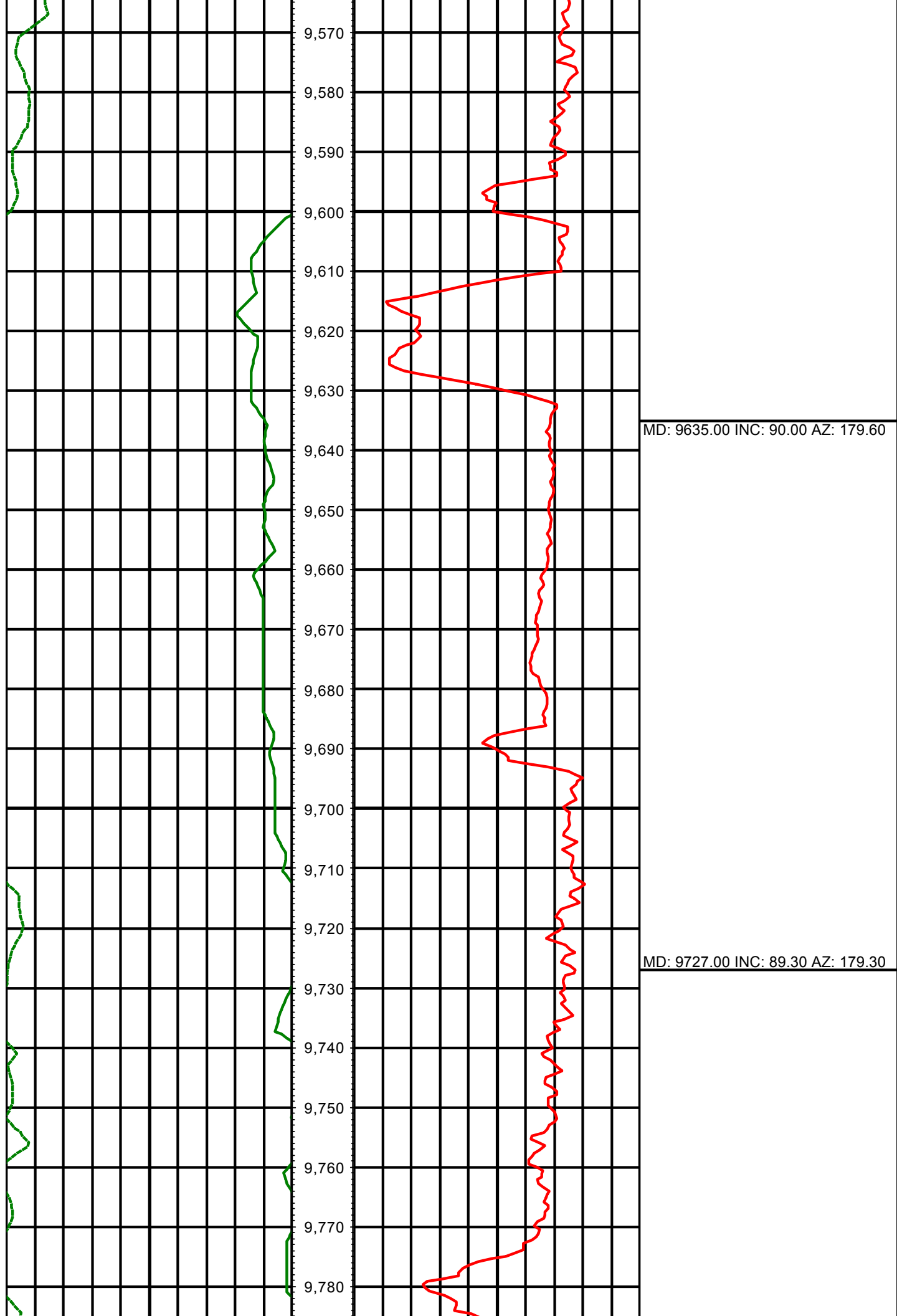
MD: 9085.00 INC: 88.80 AZ: 179.80

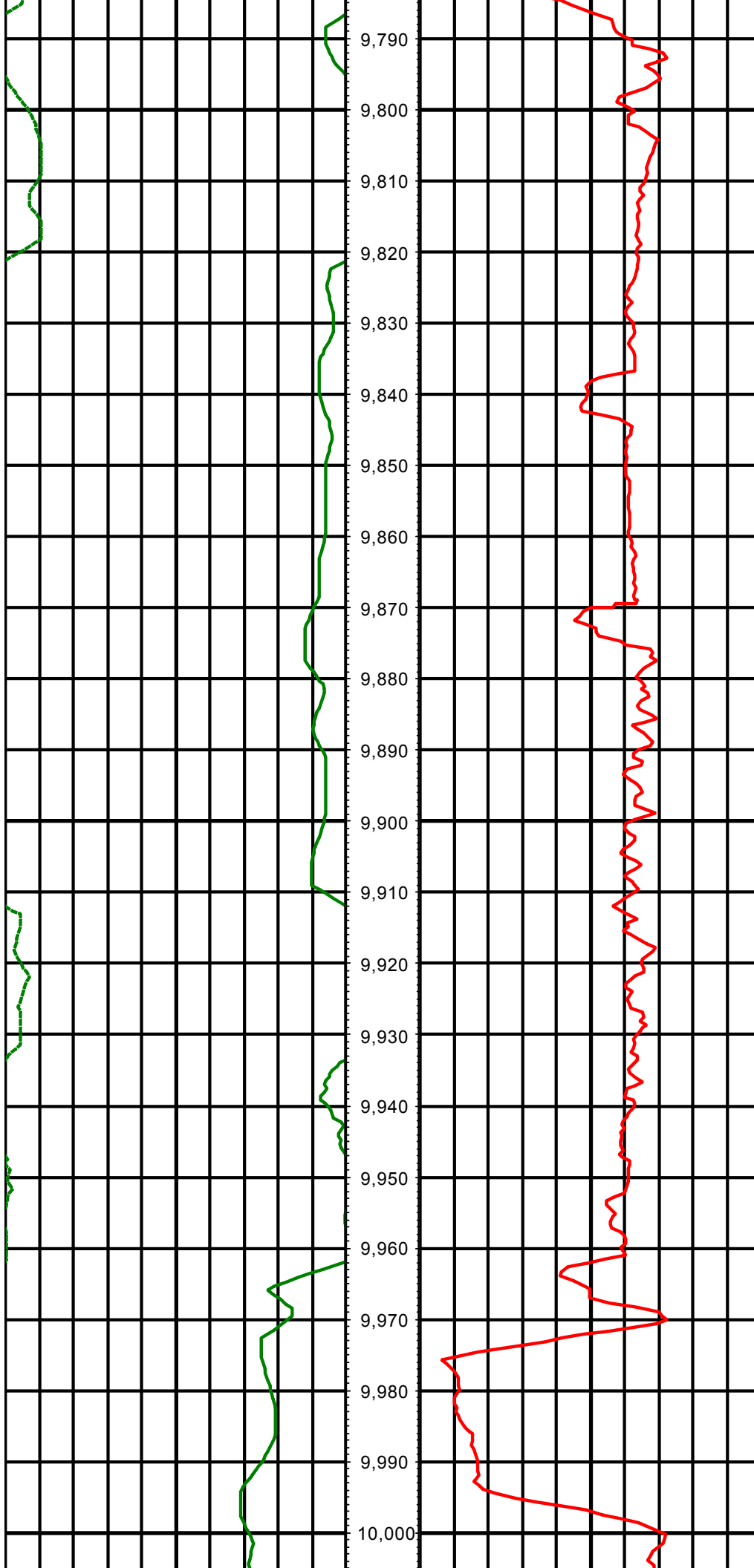


MD: 9176.00 INC: 89.00 AZ: 178.00

MD: 9268.00 INC: 89.30 AZ: 175.60







9,790

9,800

9,810

9,820

9,830

9,840

9,850

9,860

9,870

9,880

9,890

9,900

9,910

9,920

9,930

9,940

9,950

9,960

9,970

9,980

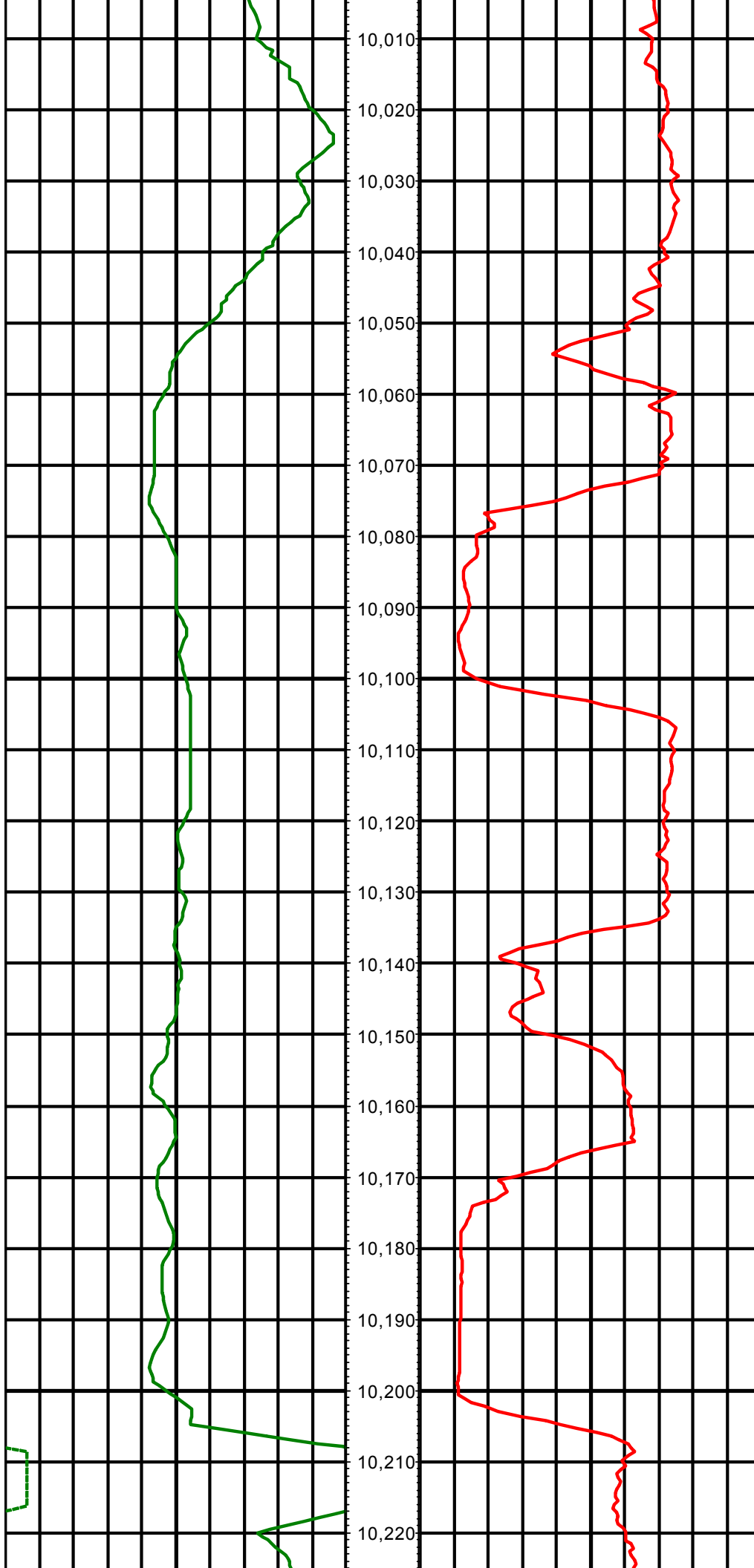
9,990

10,000

MD: 9818.00 INC: 90.60 AZ: 180.30

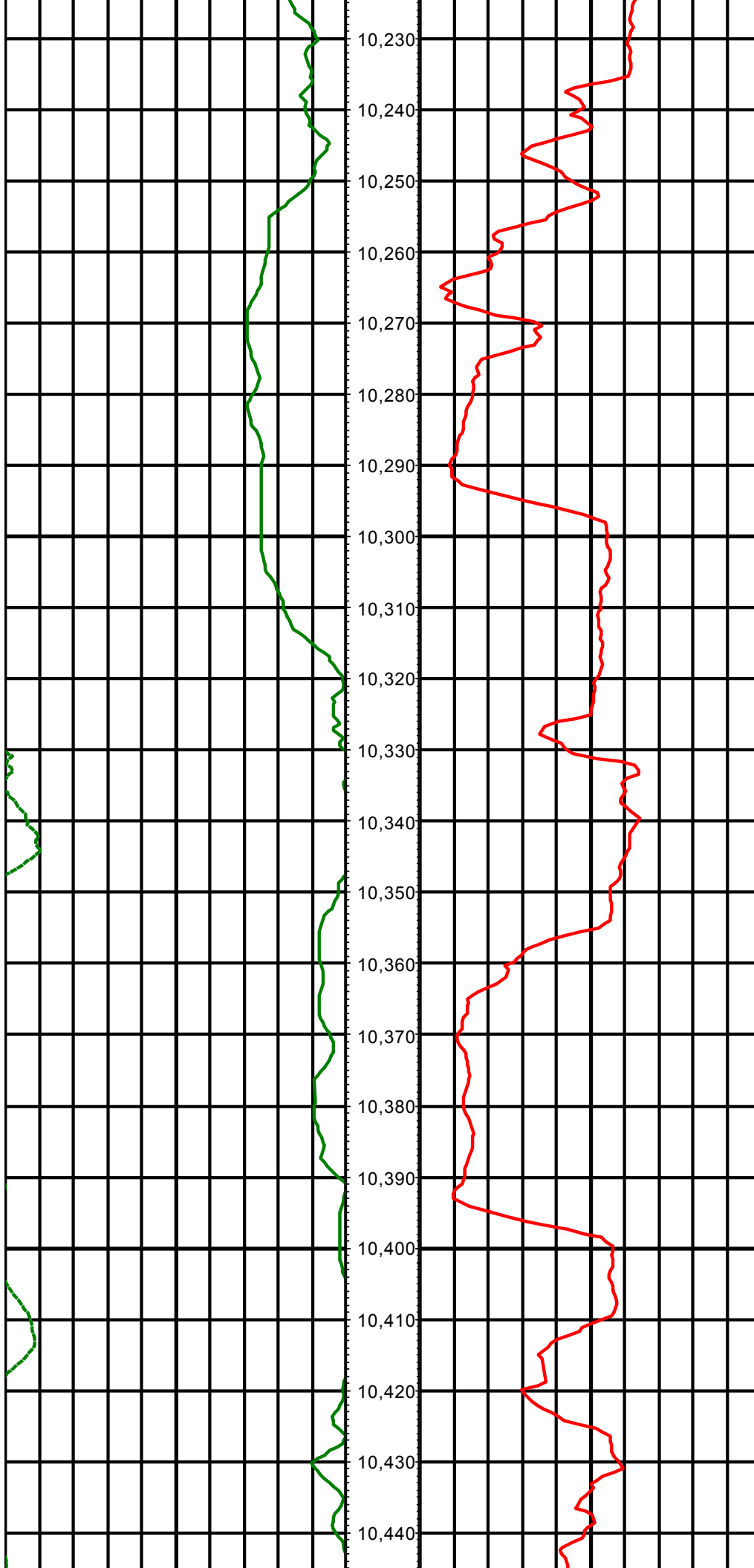
MD: 9910.00 INC: 88.80 AZ: 177.20

MD: 10002.00 INC: 89.10 AZ: 176.60



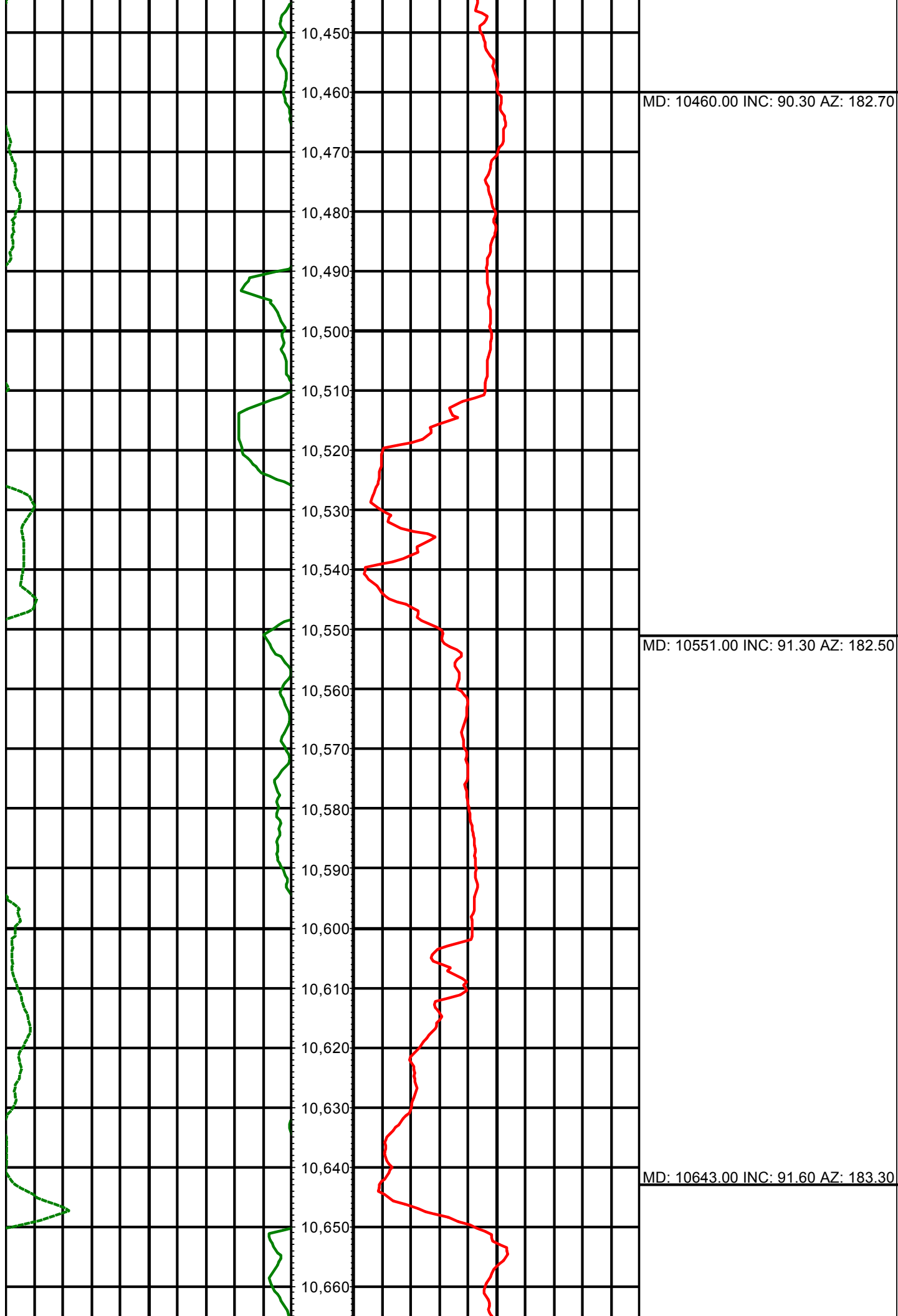
MD: 10094.00 INC: 90.10 AZ: 177.30

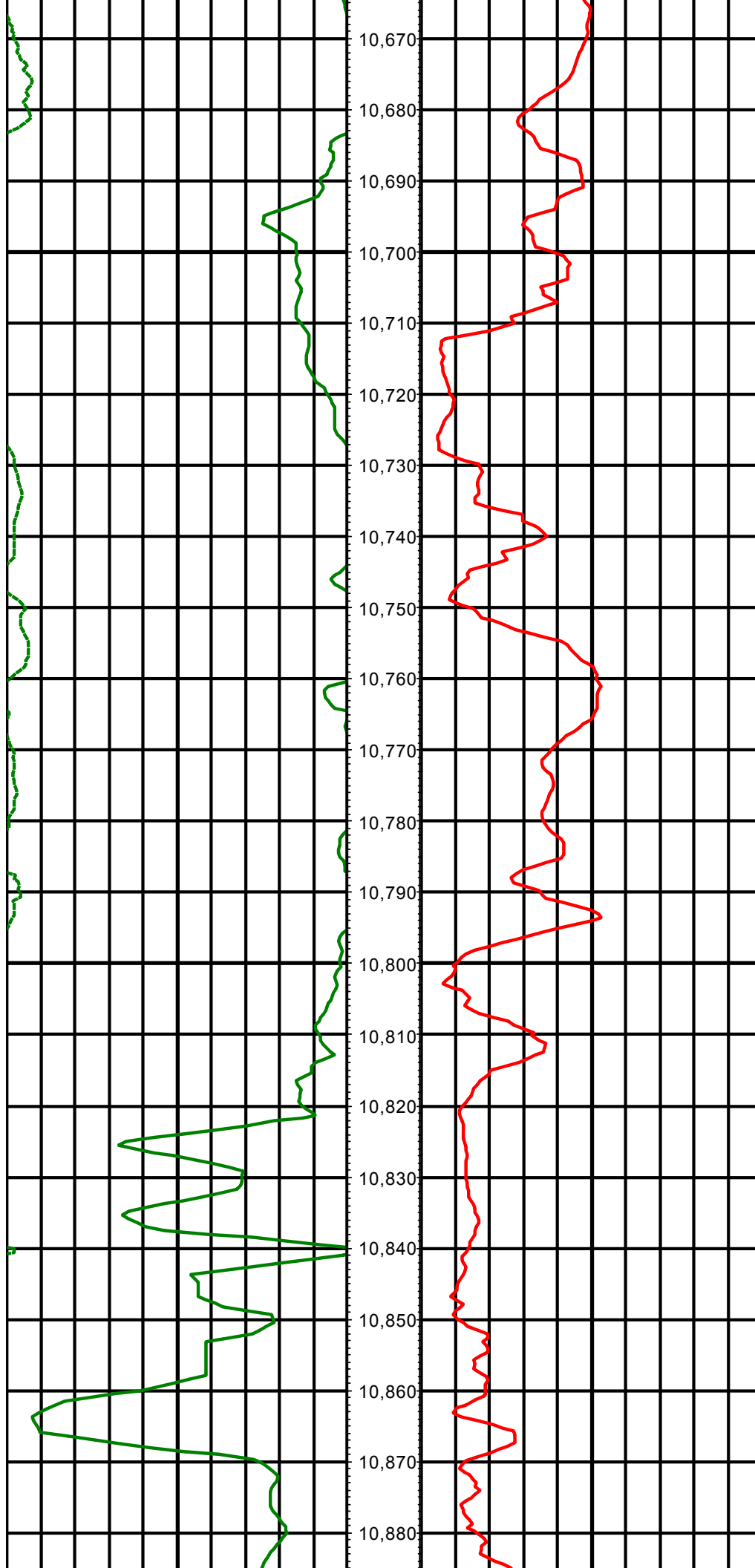
MD: 10185.00 INC: 91.50 AZ: 180.20



MD: 10277.00 INC: 91.30 AZ: 180.90

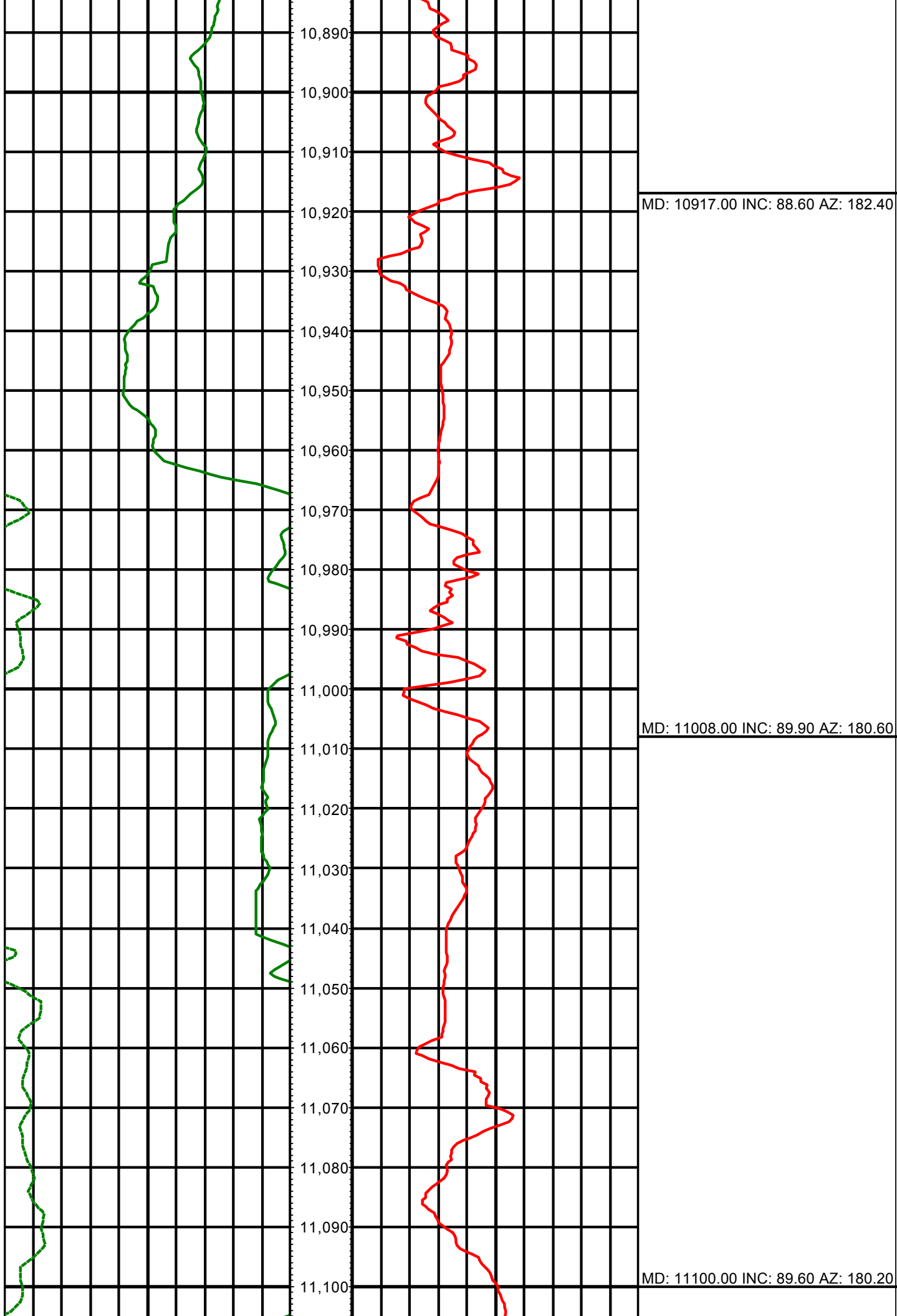
MD: 10368.00 INC: 90.10 AZ: 180.90

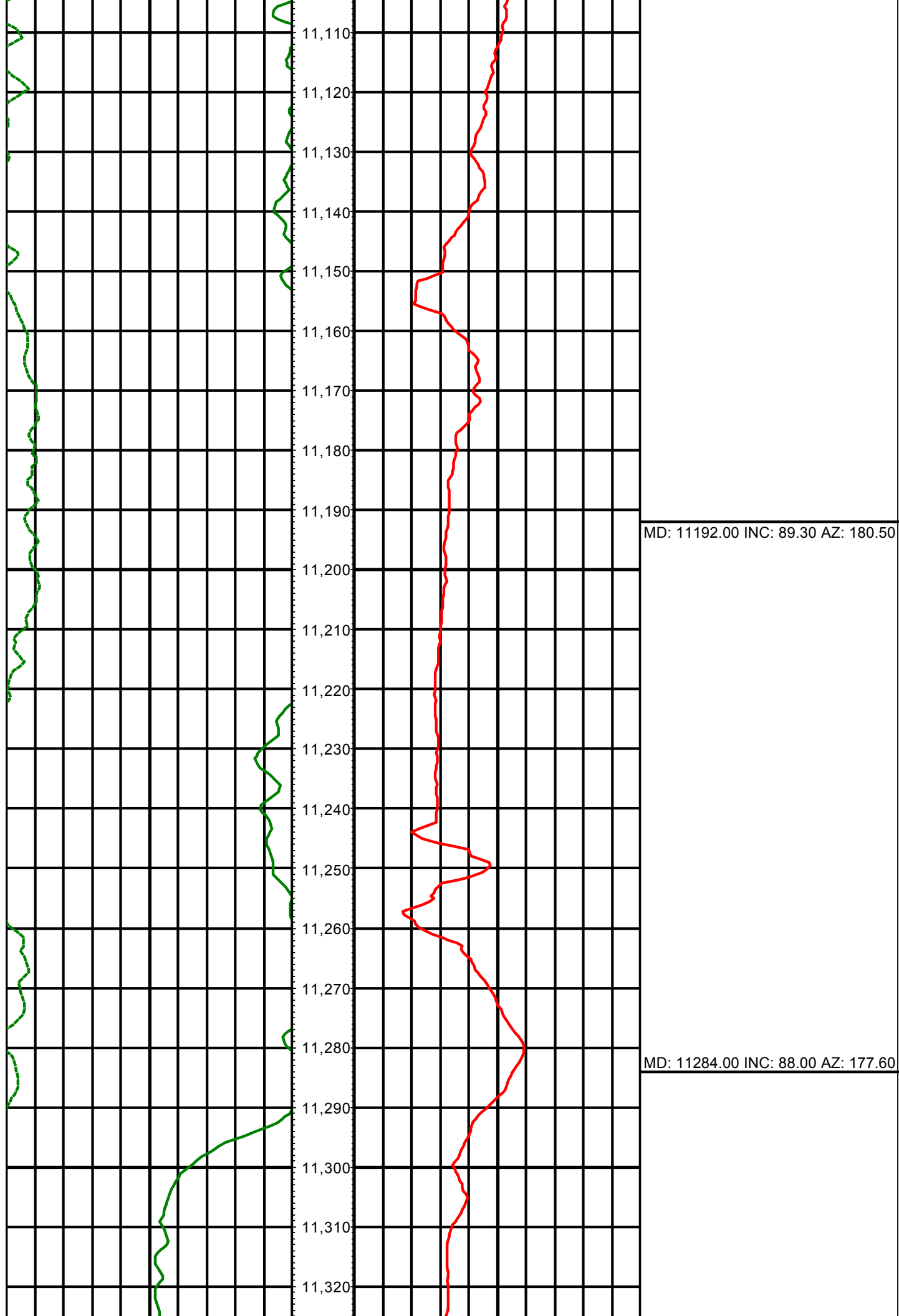




MD: 10734.00 INC: 92.40 AZ: 183.40

MD: 10826.00 INC: 88.40 AZ: 182.70

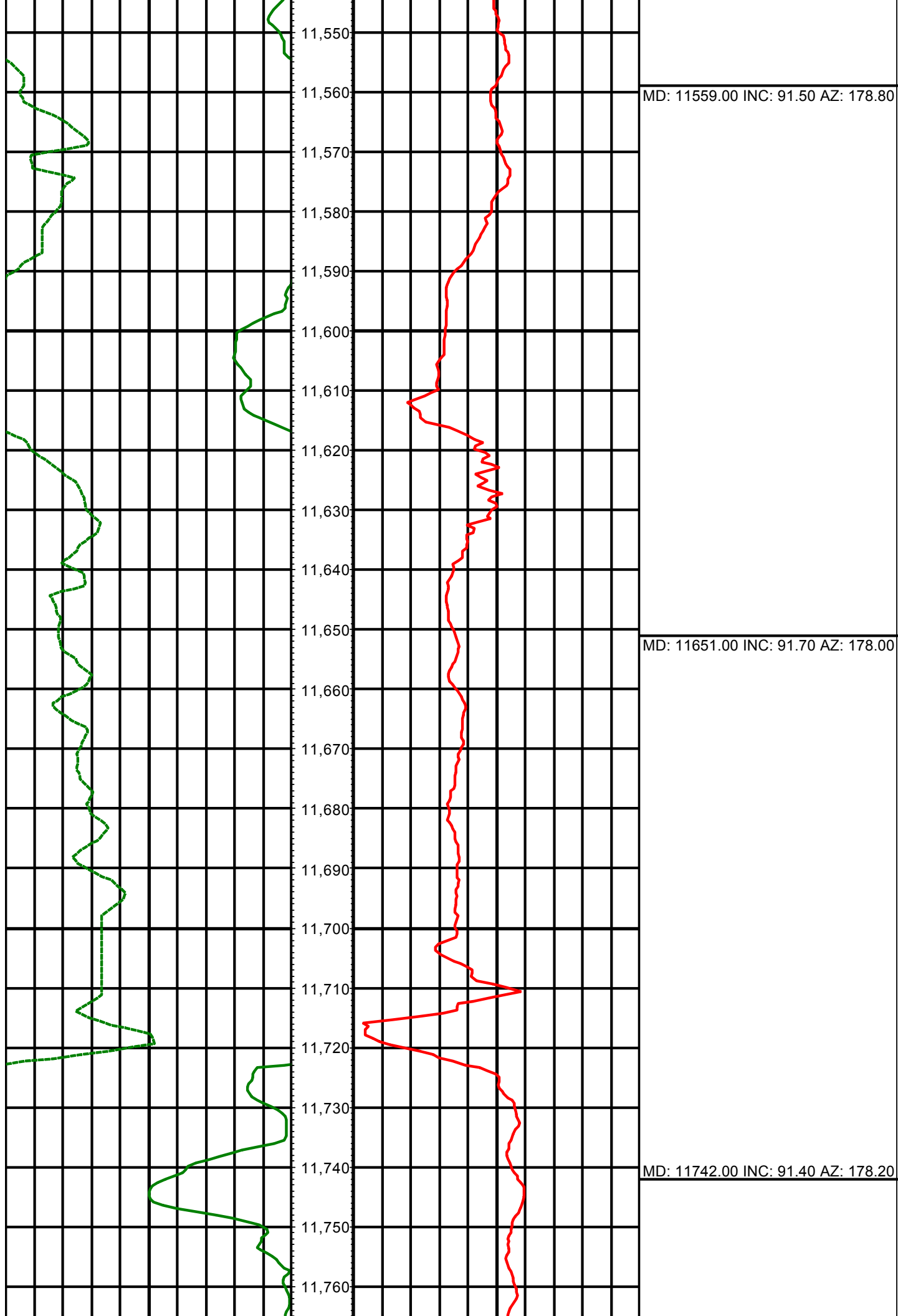


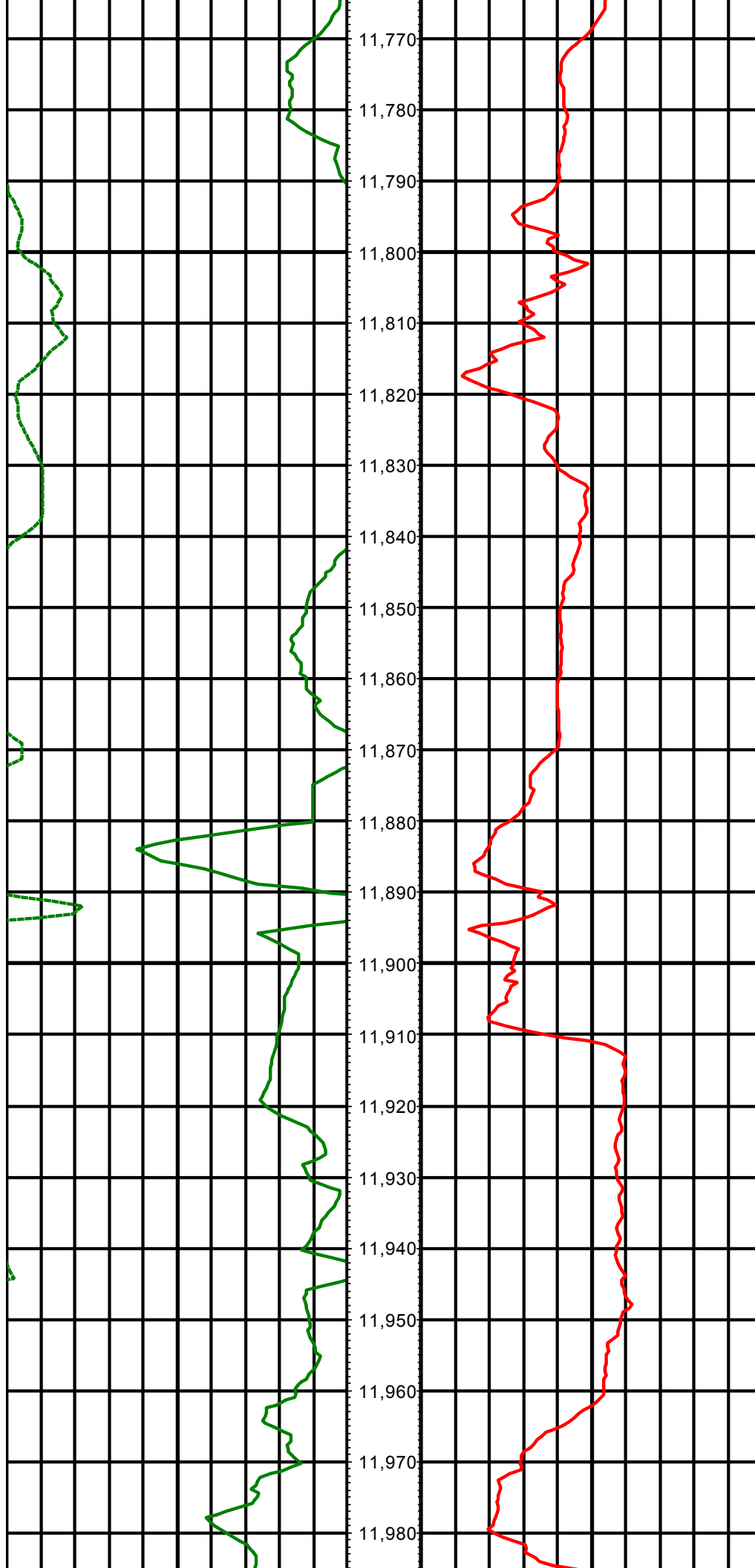




MD: 11376.00 INC: 89.80 AZ: 176.30

MD: 11467.00 INC: 91.20 AZ: 178.90





MD: 11833.00 INC: 91.80 AZ: 177.50

MD: 11925.00 INC: 91.80 AZ: 177.40

