



Cathedral Energy Services  
Cathedral Energy Services  
1949 N. Pyrite Rd.  
Casper, WY 82604

**135396**

5":100' - MD  
9/3/2013 5:37:07 PM

**Oper. Company:** Whiting Oil and Gas Corp.

**Country:** U.S.A.

**State / Province:** Colorado

**County / Parish:** Weld

**Started:** 08/30/2013 11:00 PM

**API/UWI:** 05-123-36773

**Field:** DJ Basin

**Well:** Razor 27K-3407A

**Rig:** Cade 23

**Ended:**

Gamma Log

Section Plane: 178.00°

True North: 8.15°

Gamma Attenuation Factor:

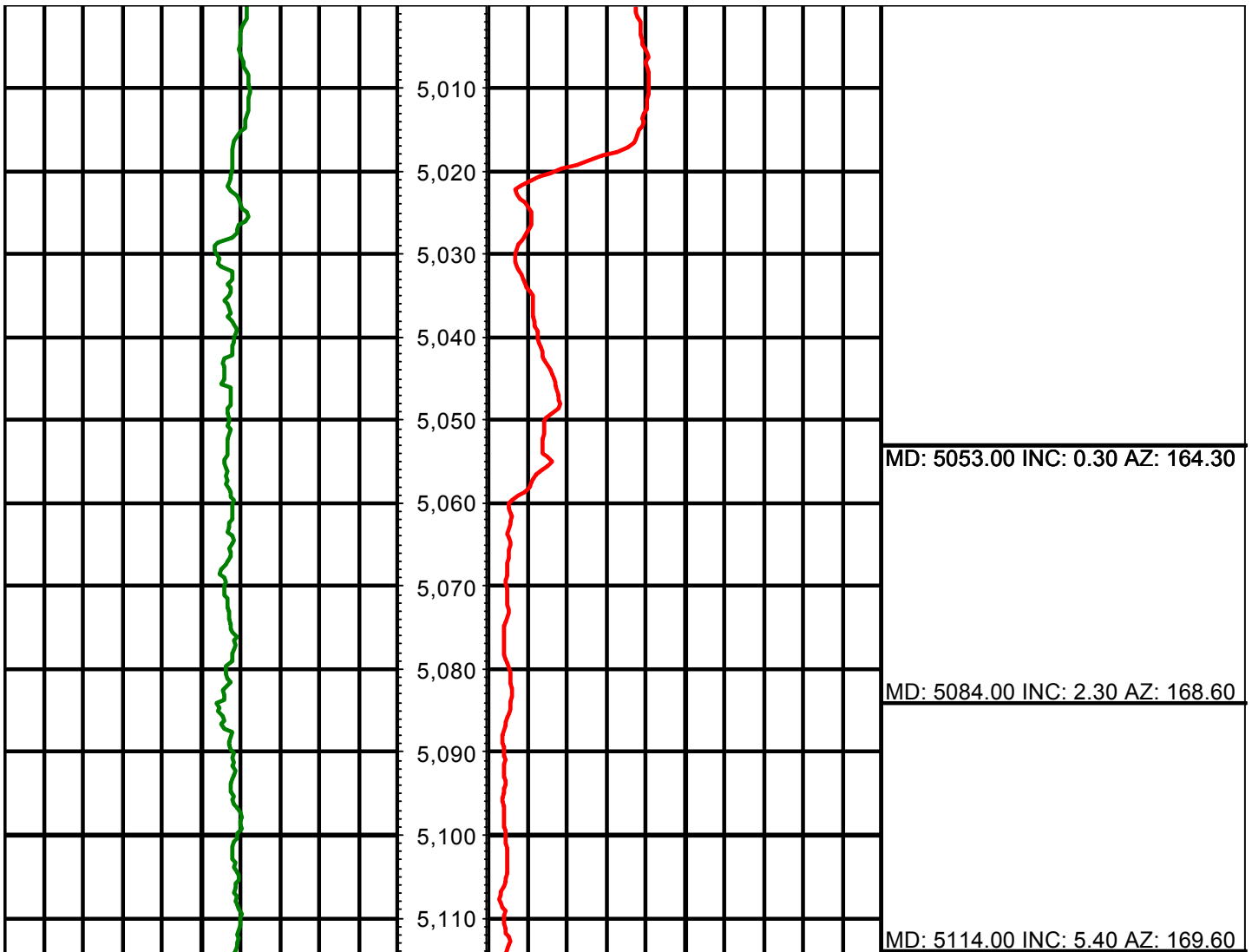
5000' - 6265' -3.55

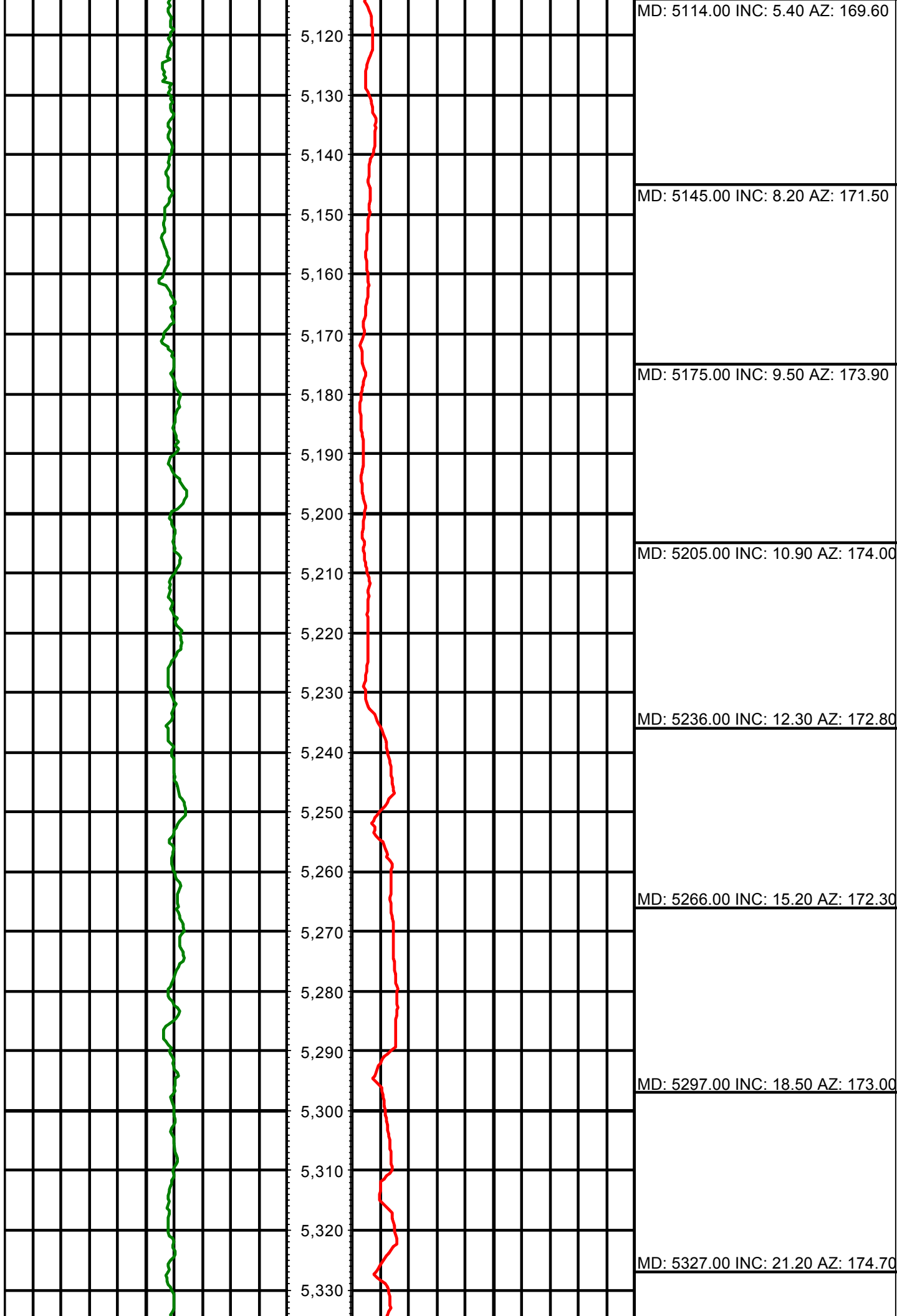
6265' - Current - 3.10

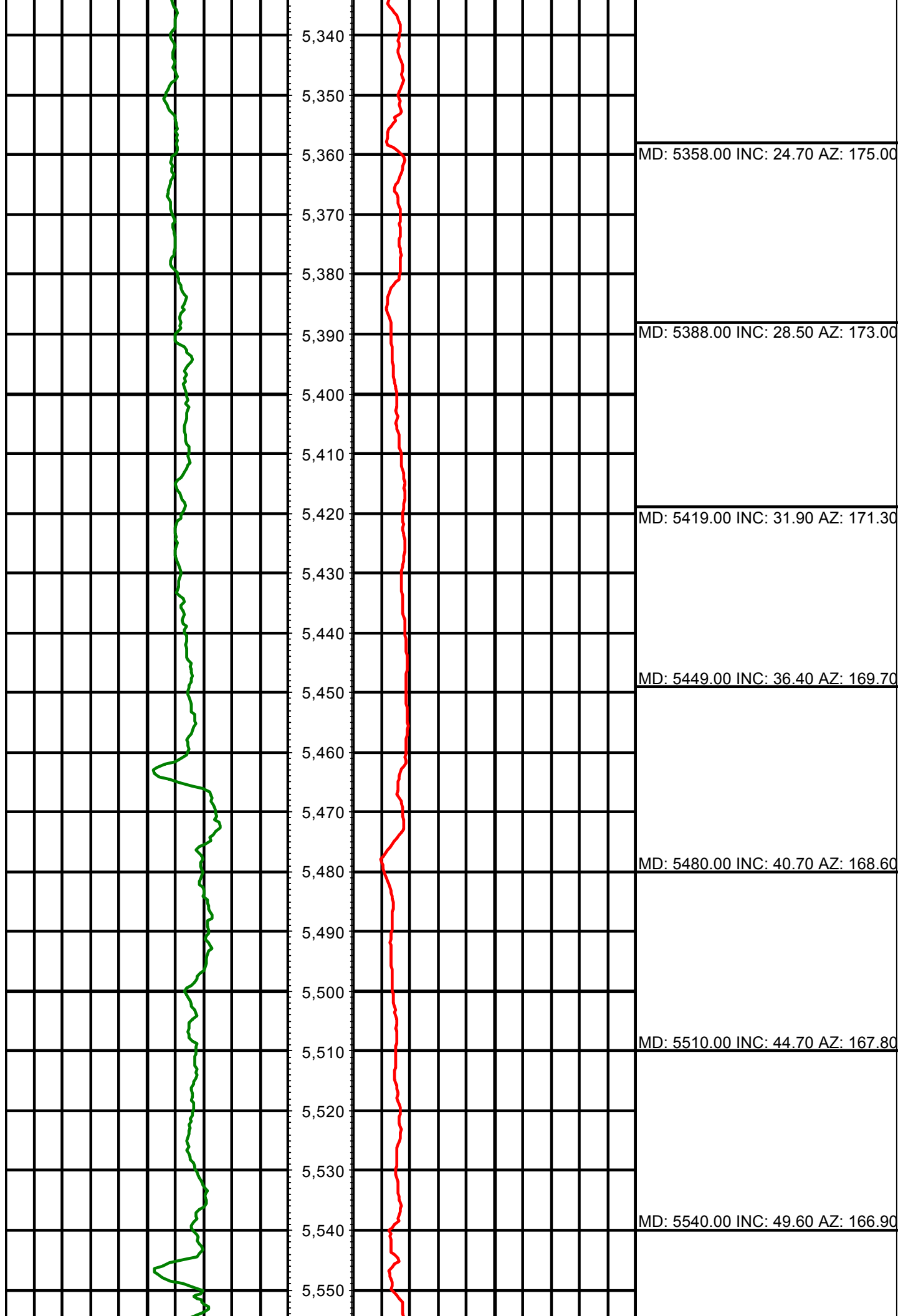
Gamma Averaging: 7 %

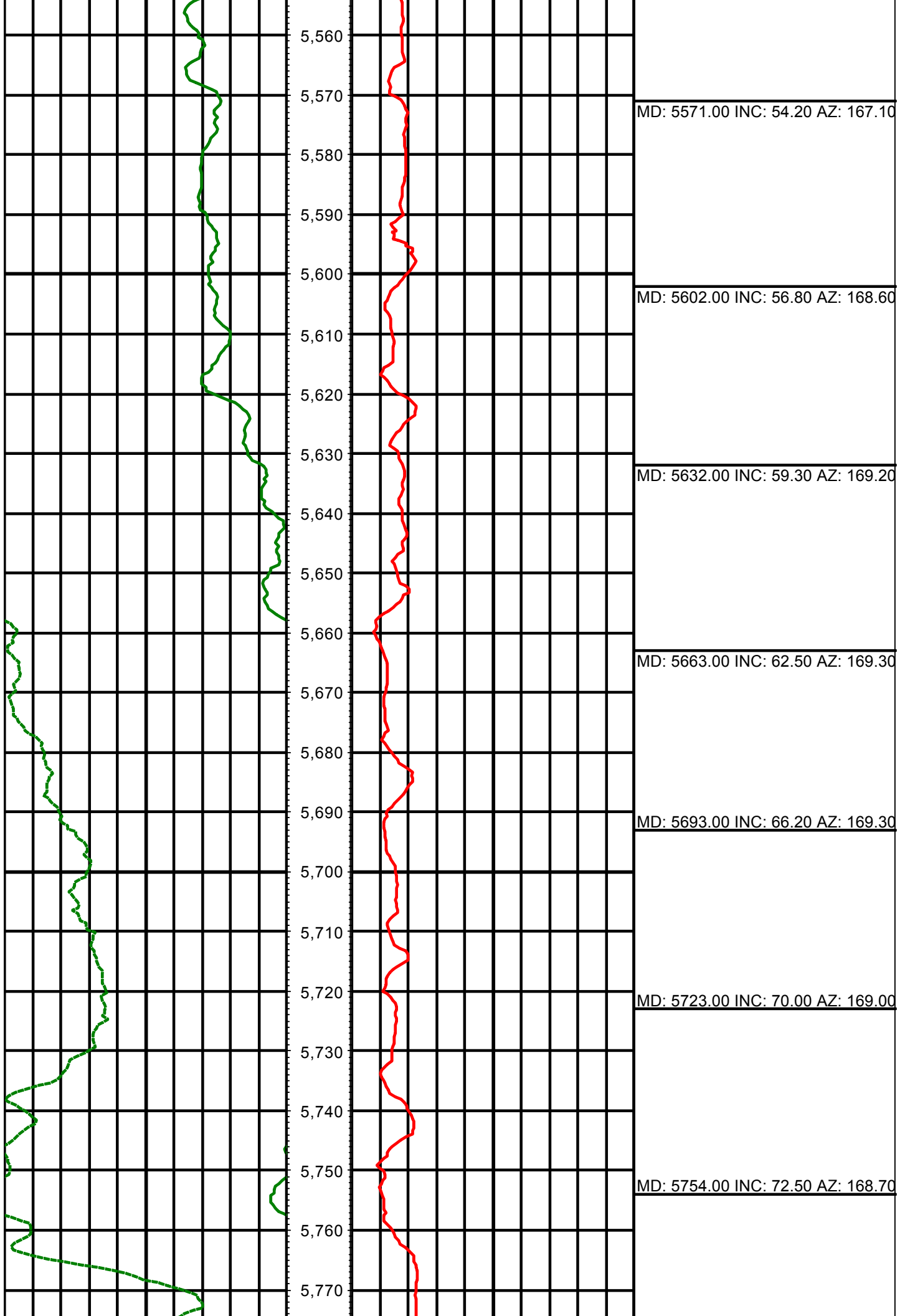
*All interpretations are opinions based on inferences from electrical or other measurements and we cannot and do not guarantee the accuracy or correctness of any interpretation, and we shall not except in the case of gross or willful negligence on our part, be liable or responsible for any loss, cost damages or expenses incurred or sustained by anyone resulting from an interpretation made by any of our officers, agents, or employees.*

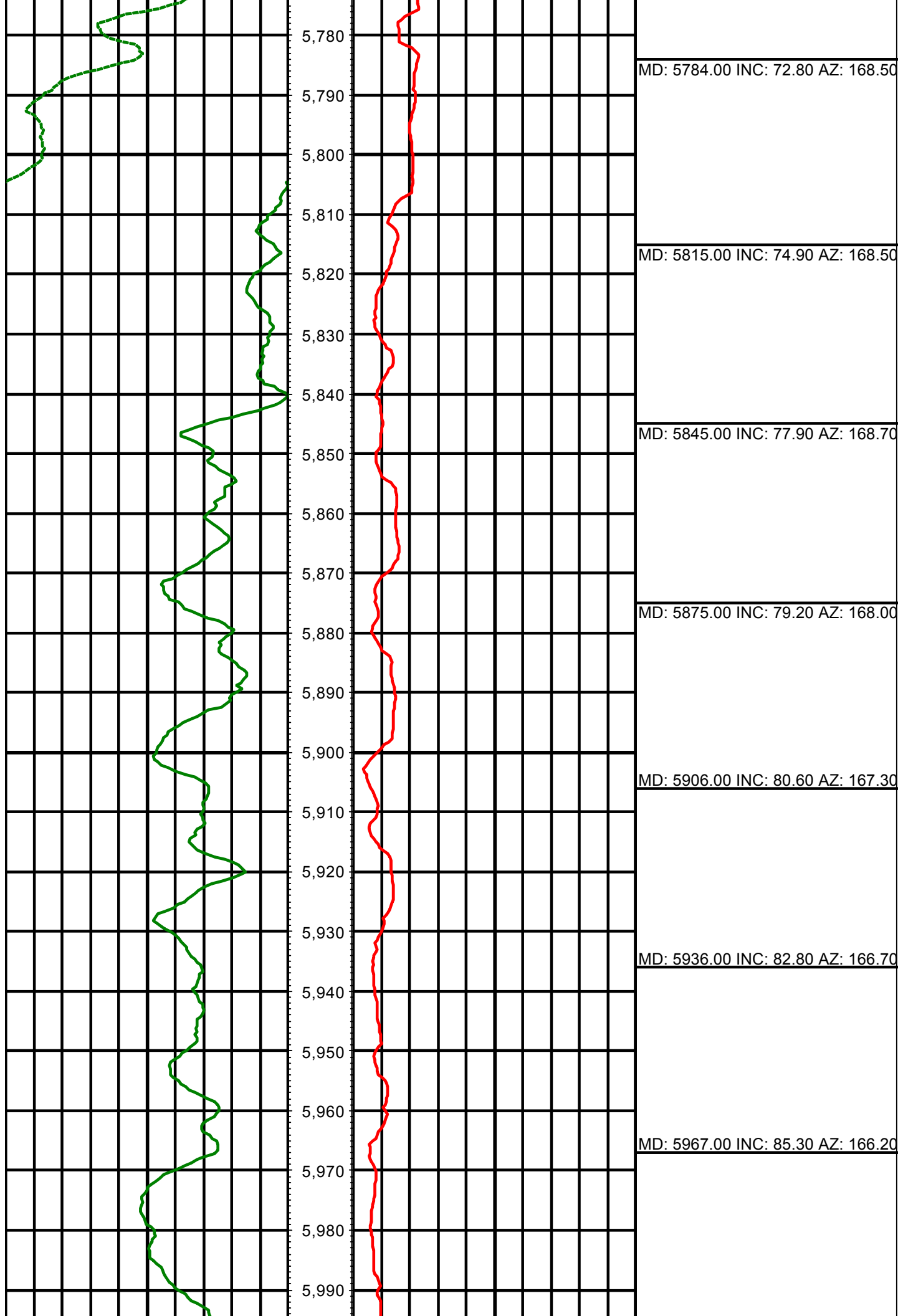
0.00 Gamm Ray (API) 150.00 MD 0.00 ROP (FT/HR) 800.00 Surveys (MD/INC/AZ)  
150.00 2 300.00 FT

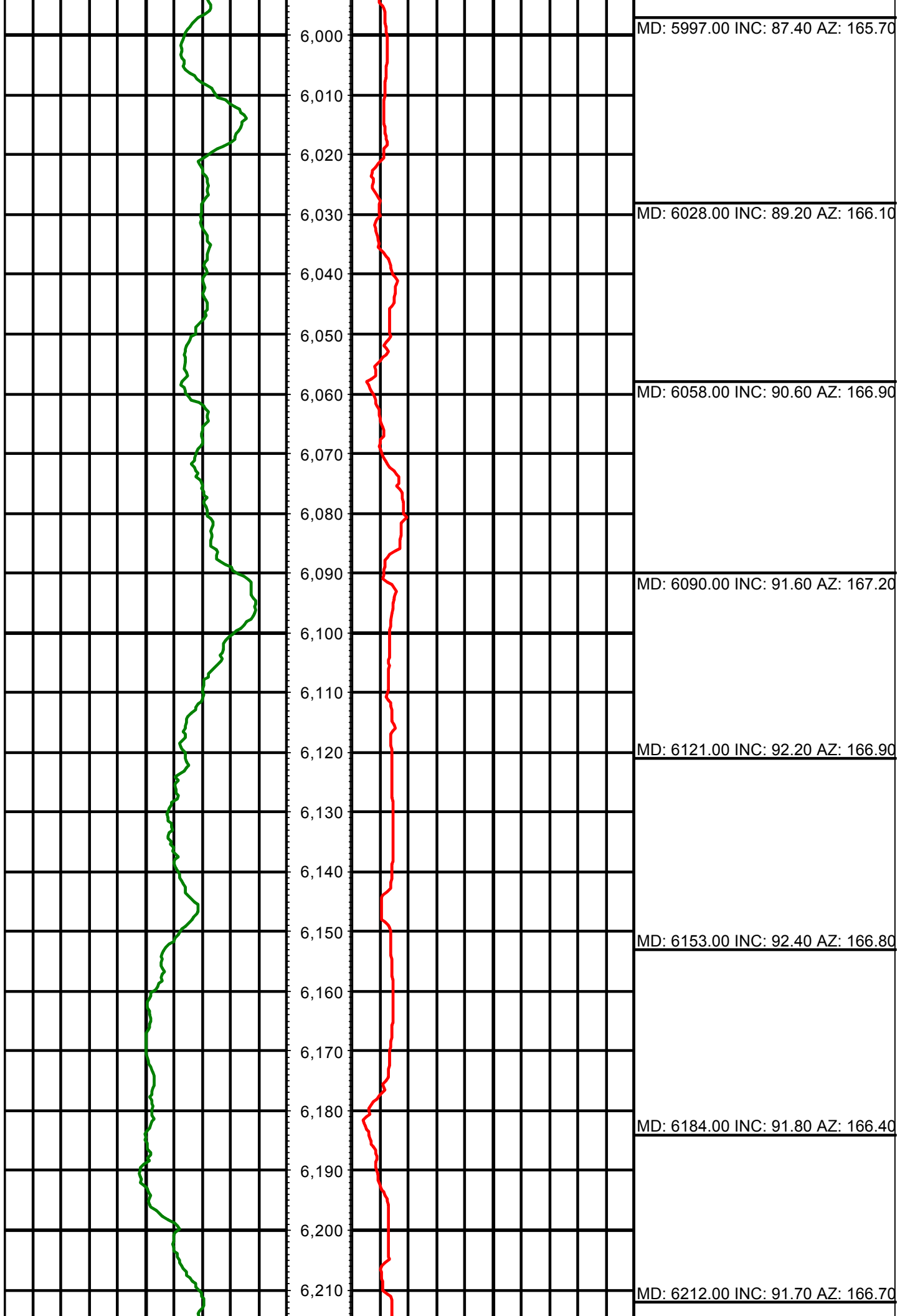


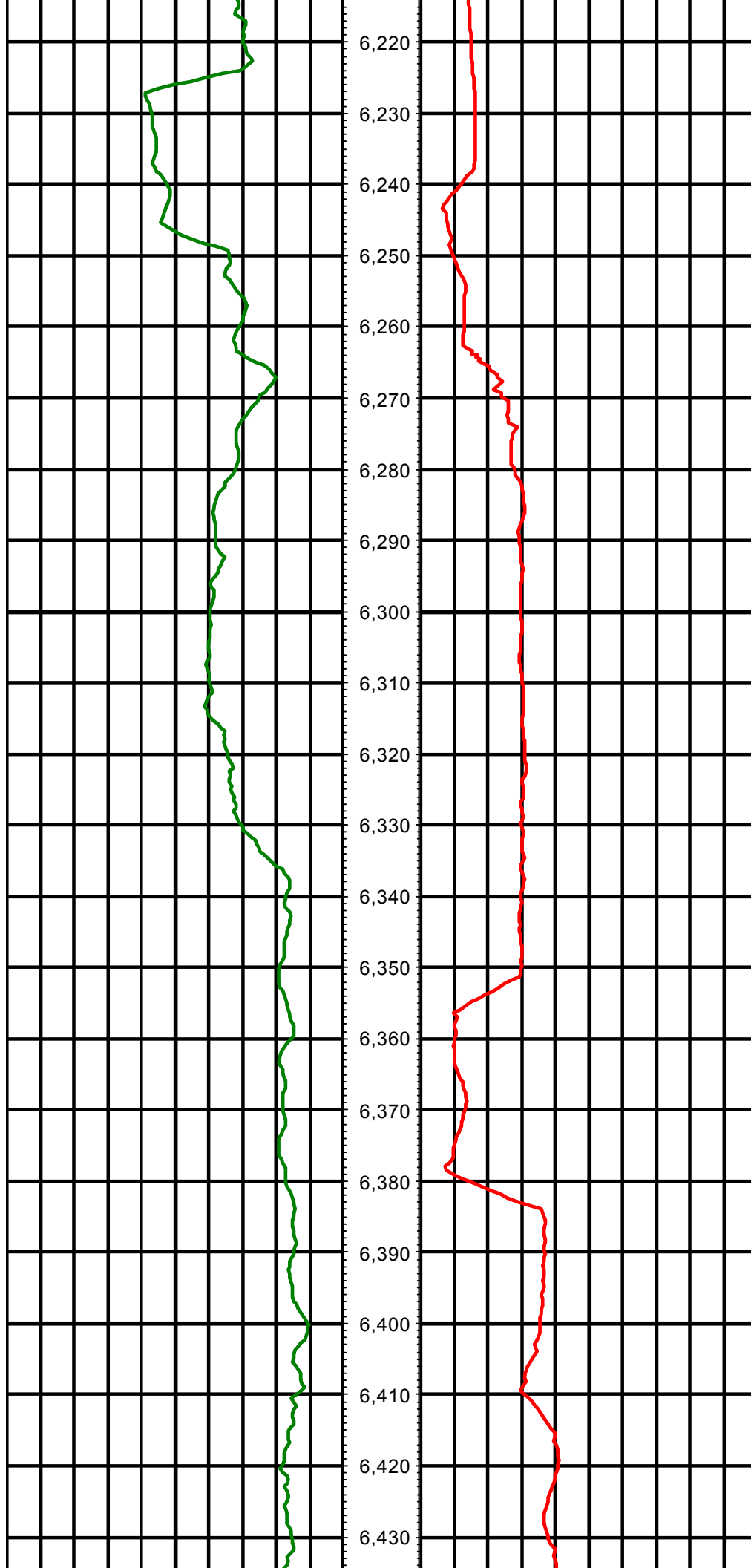






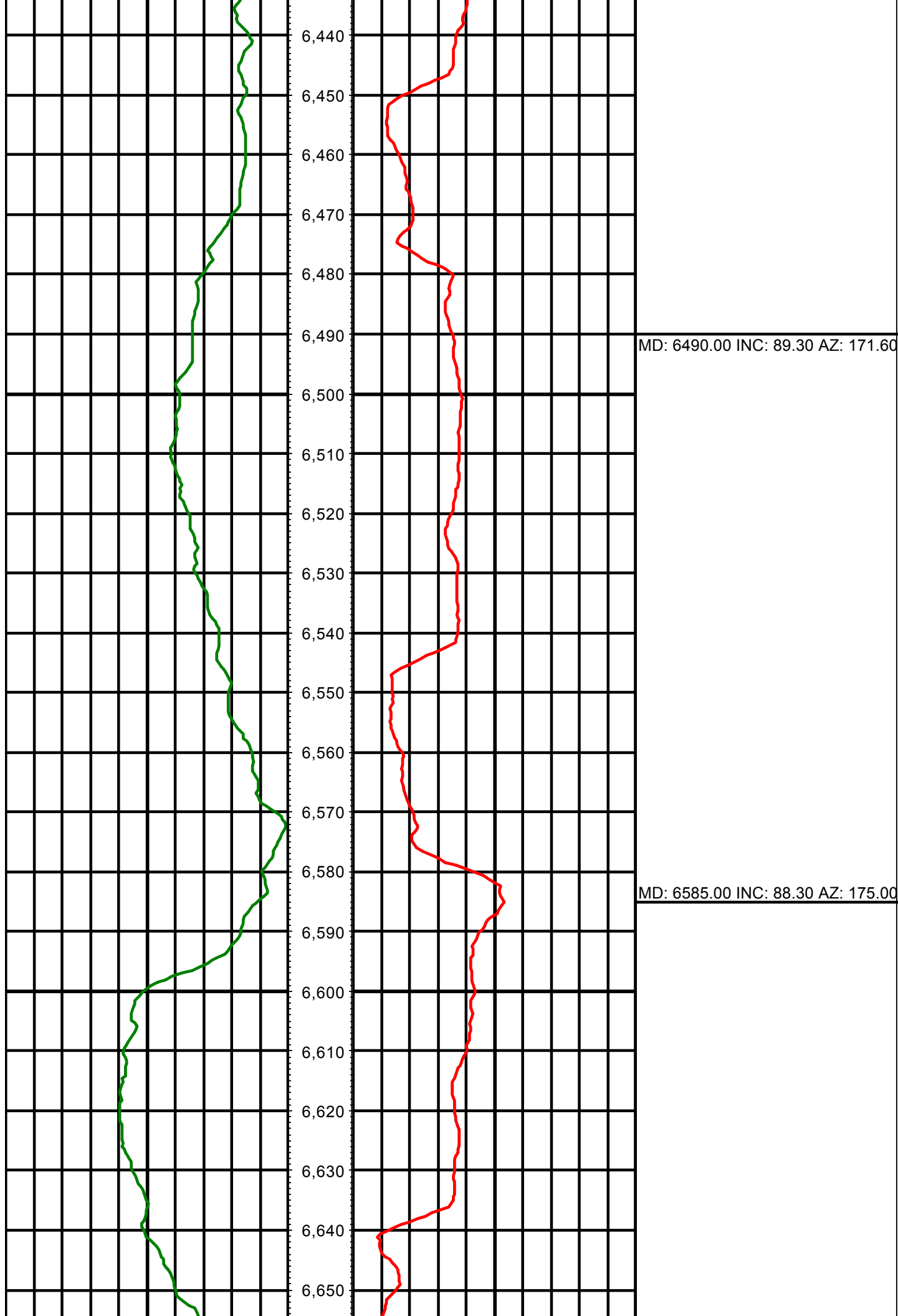




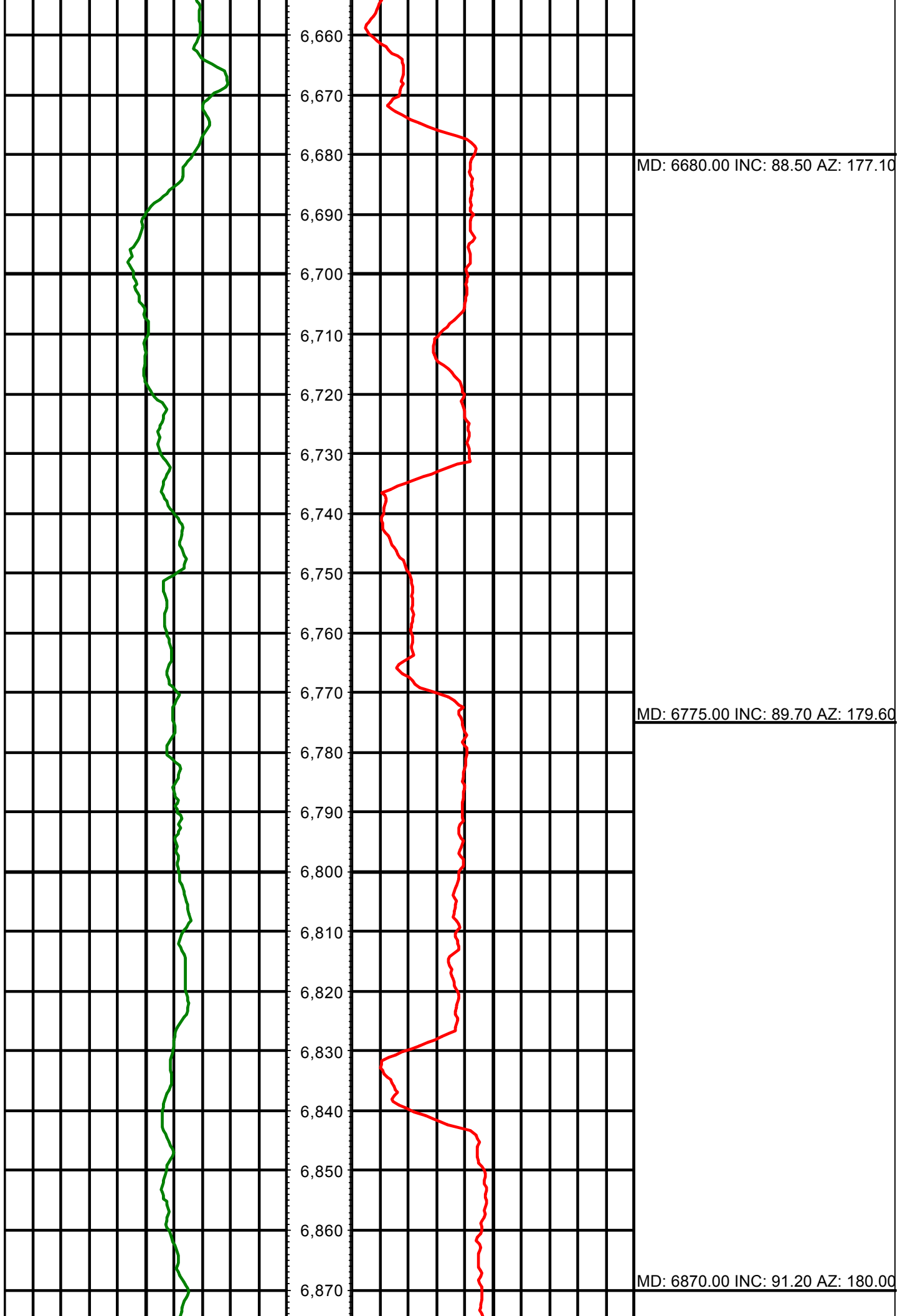


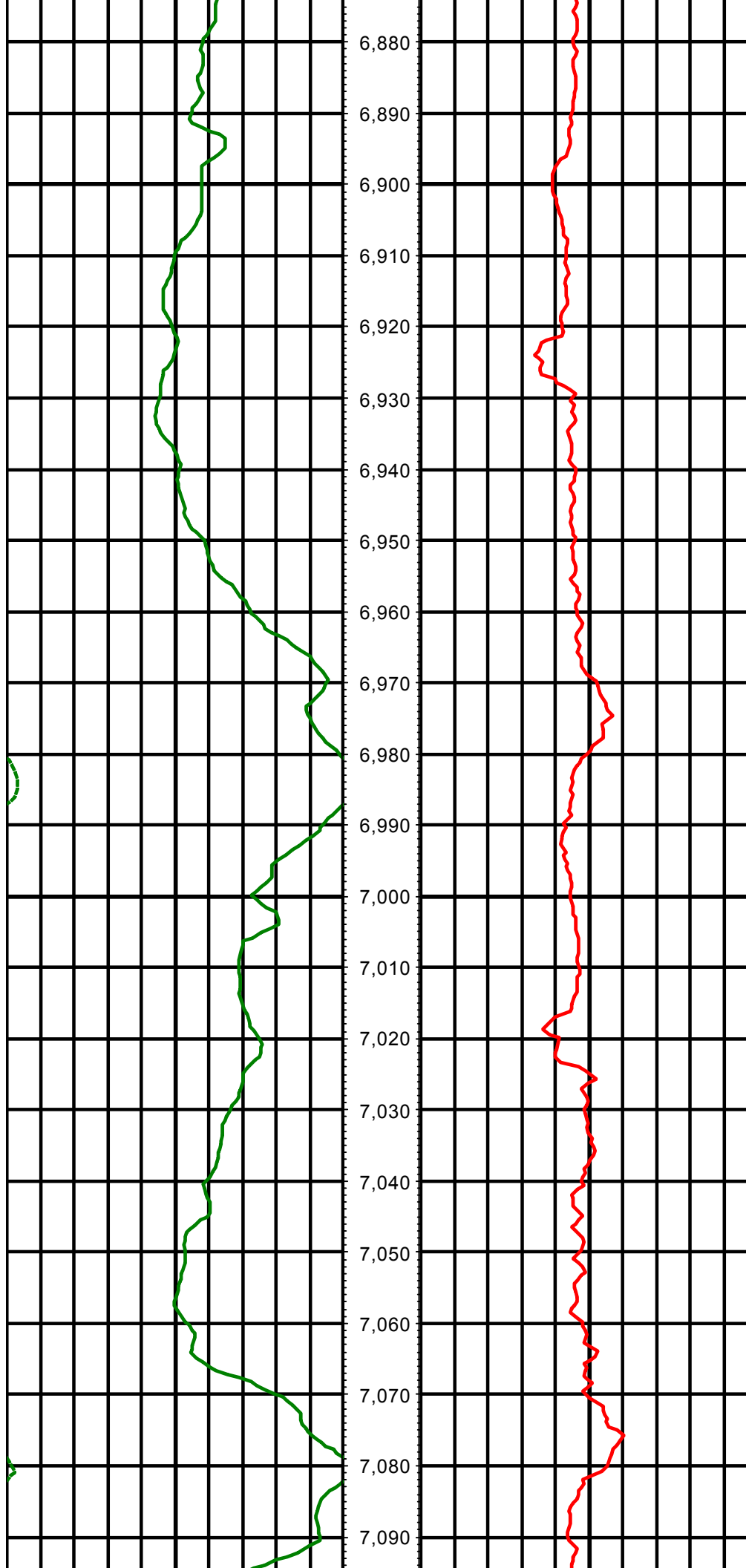
MD: 6301.00 INC: 91.50 AZ: 167.20

MD: 6395.00 INC: 90.10 AZ: 169.80



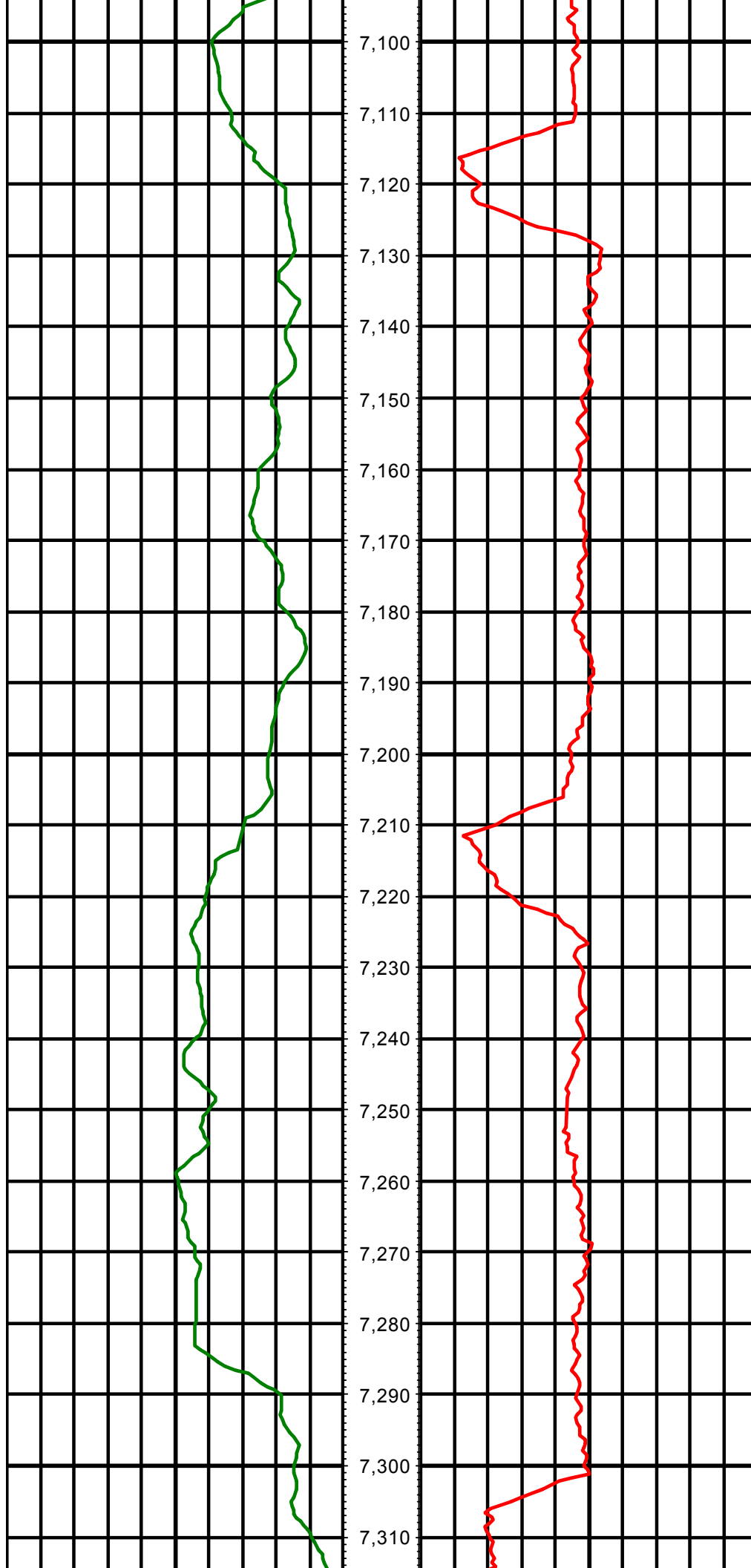






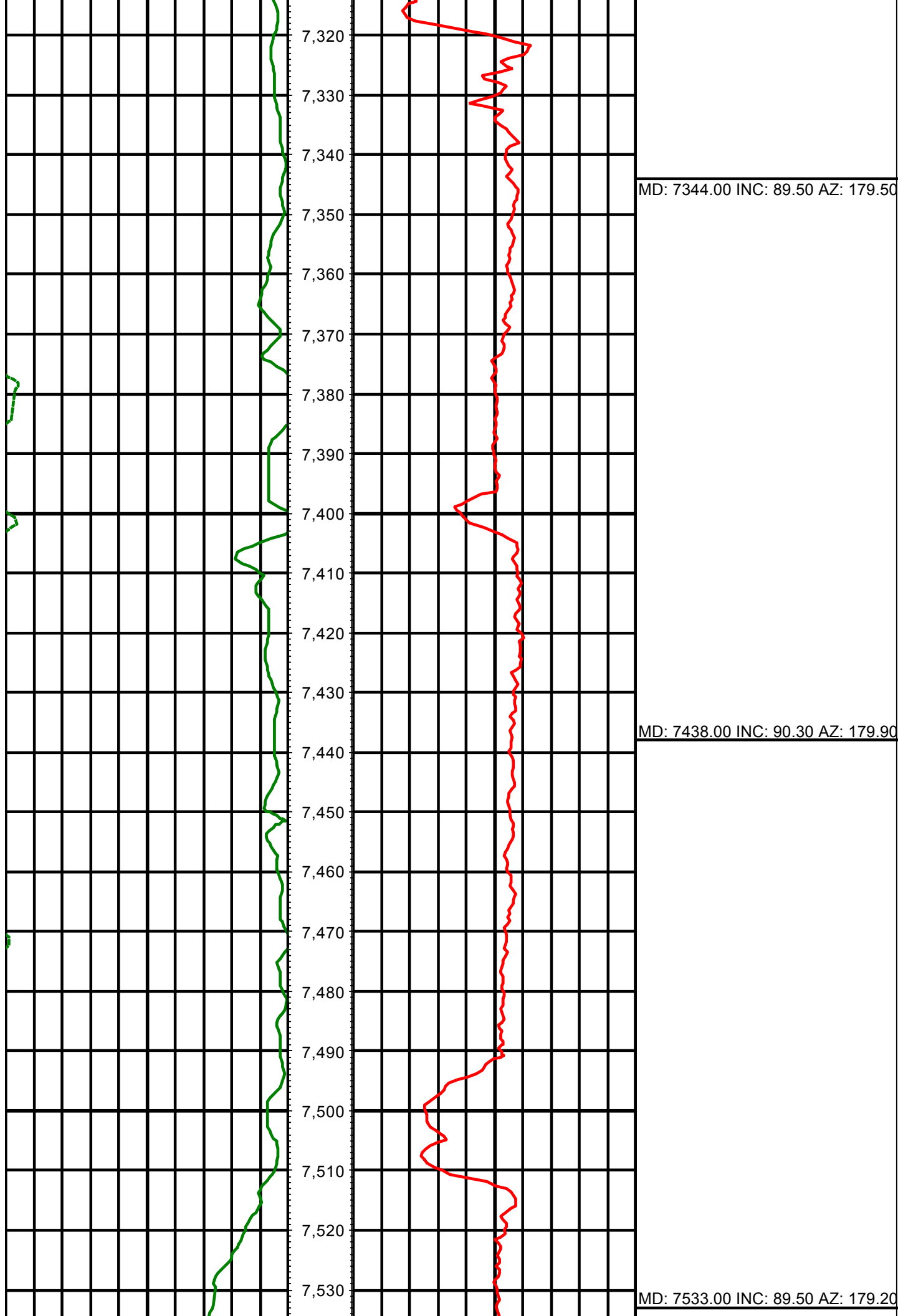
MD: 6964.00 INC: 91.90 AZ: 180.20

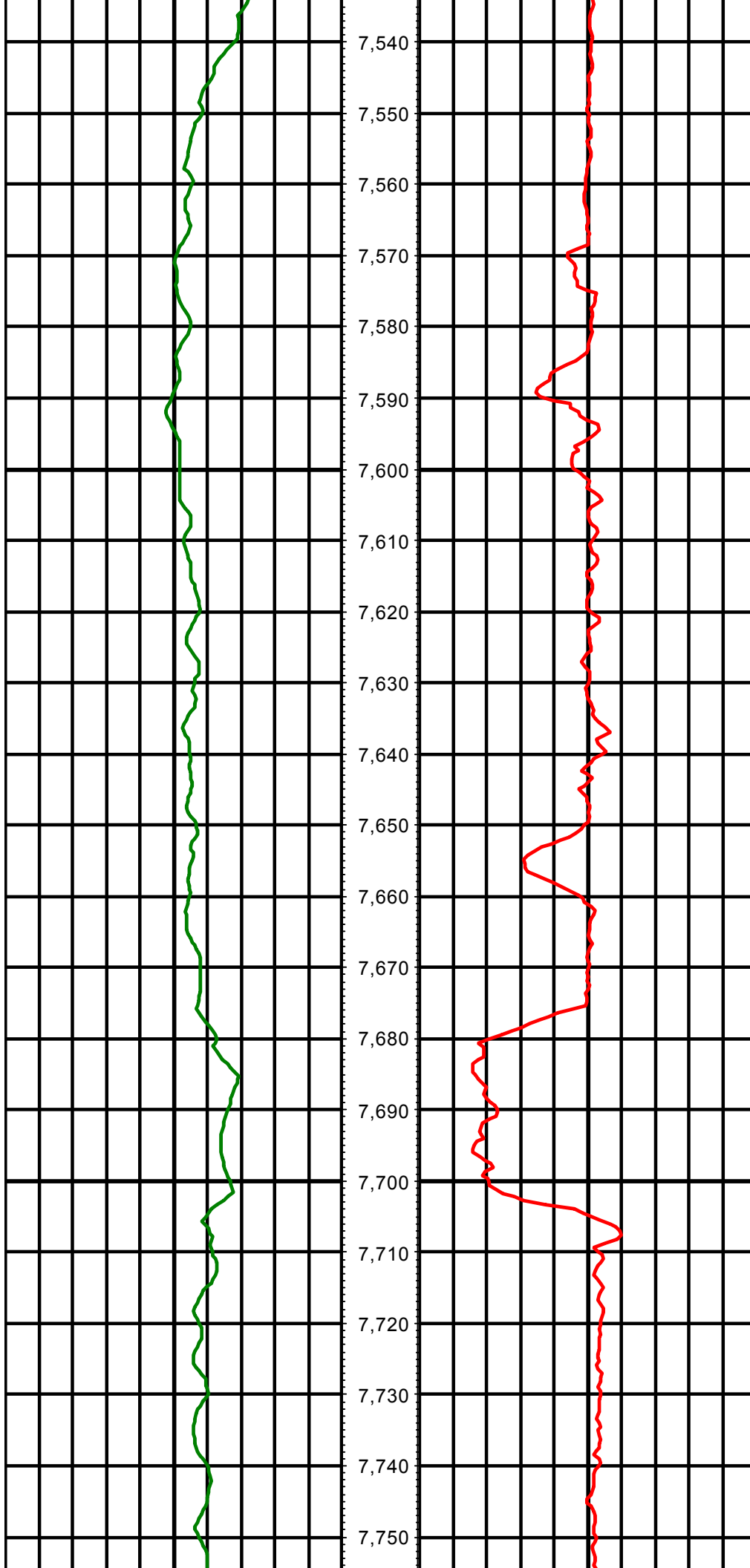
MD: 7059.00 INC: 92.30 AZ: 179.10



MD: 7154.00 INC: 91.60 AZ: 179.20

MD: 7249.00 INC: 90.70 AZ: 180.20





7,540

7,550

7,560

7,570

7,580

7,590

7,600

7,610

7,620

7,630

7,640

7,650

7,660

7,670

7,680

7,690

7,700

7,710

7,720

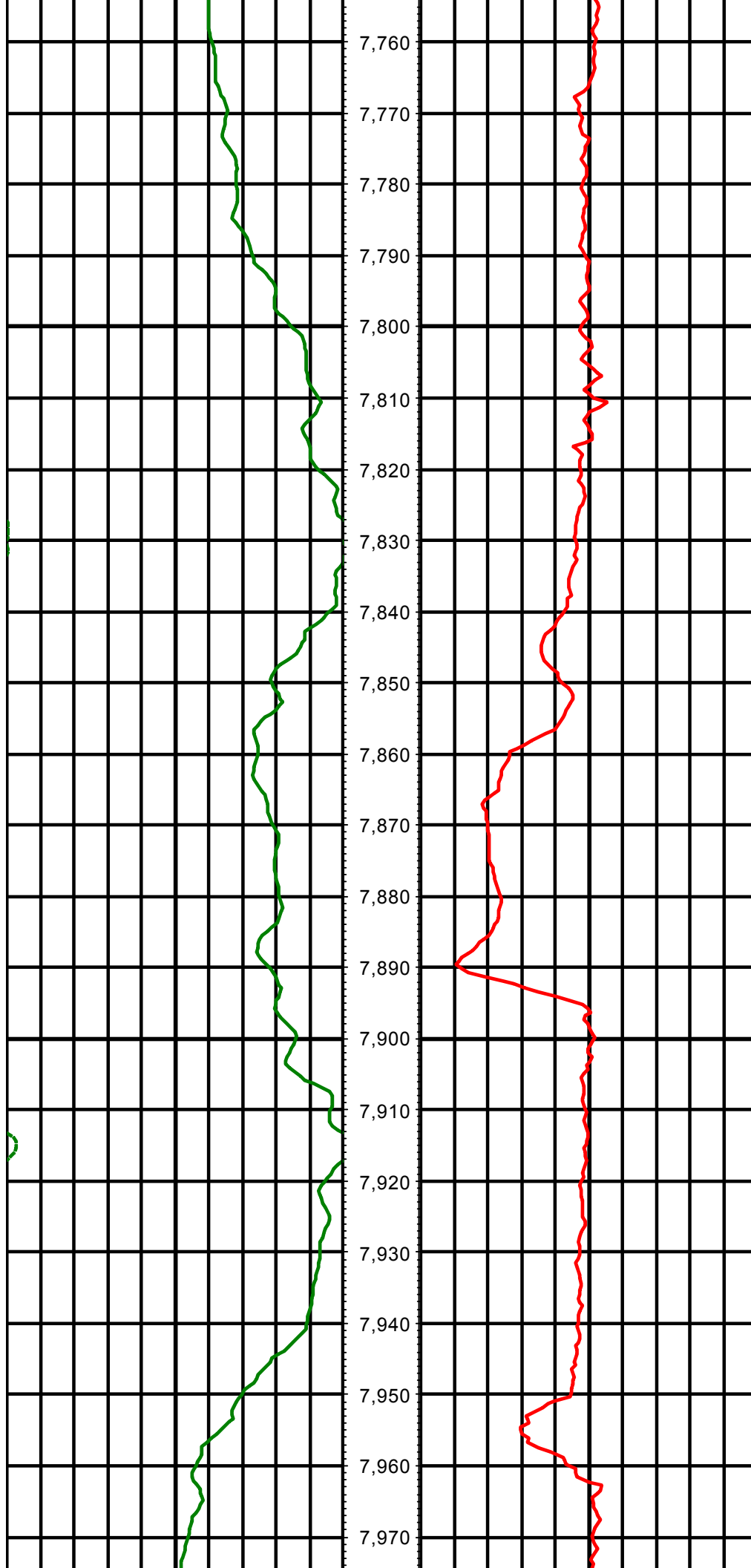
7,730

7,740

7,750

MD: 7625.00 INC: 90.30 AZ: 179.20

MD: 7717.00 INC: 90.00 AZ: 181.00



7,760

7,770

7,780

7,790

7,800

7,810

7,820

7,830

7,840

7,850

7,860

7,870

7,880

7,890

7,900

7,910

7,920

7,930

7,940

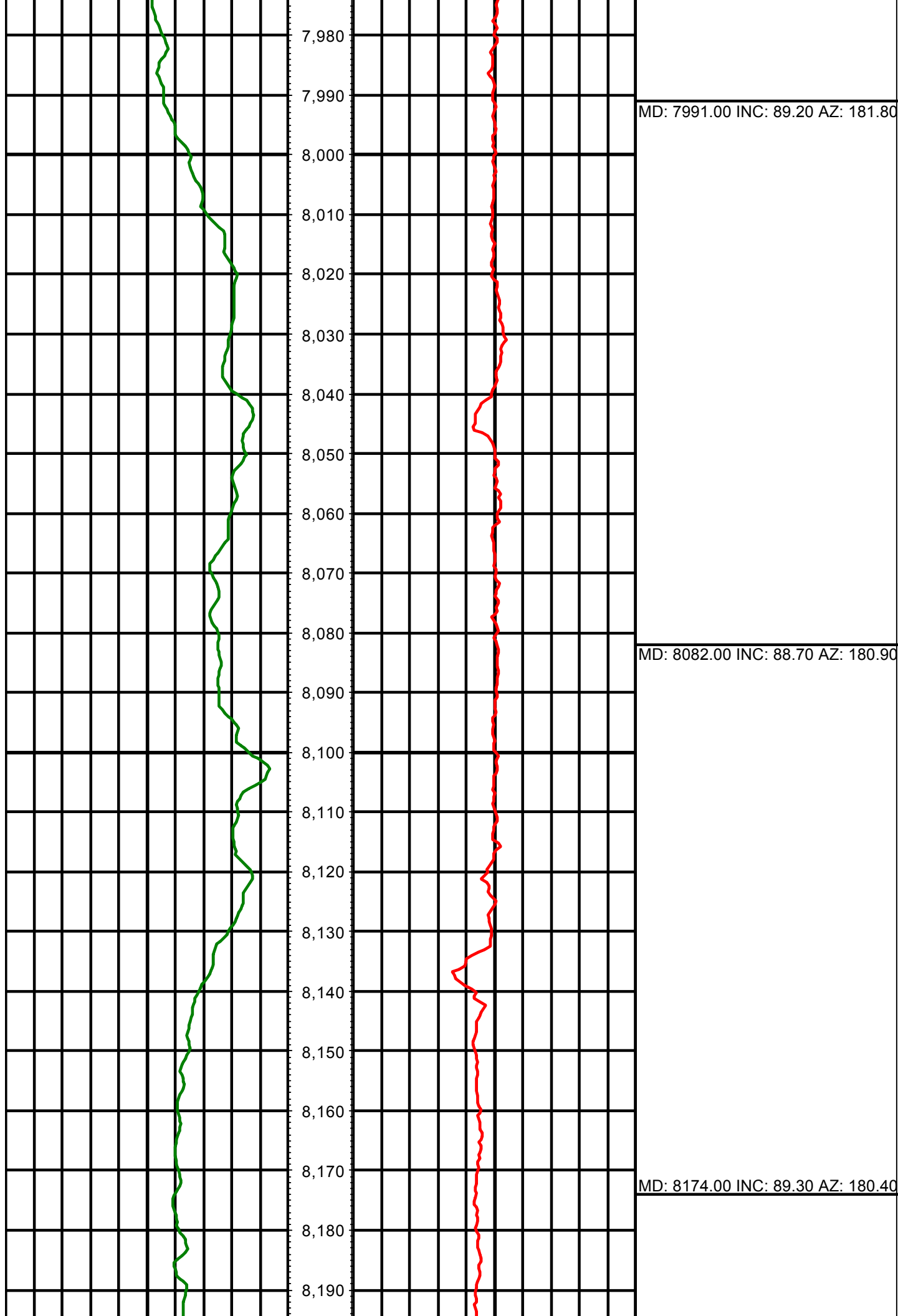
7,950

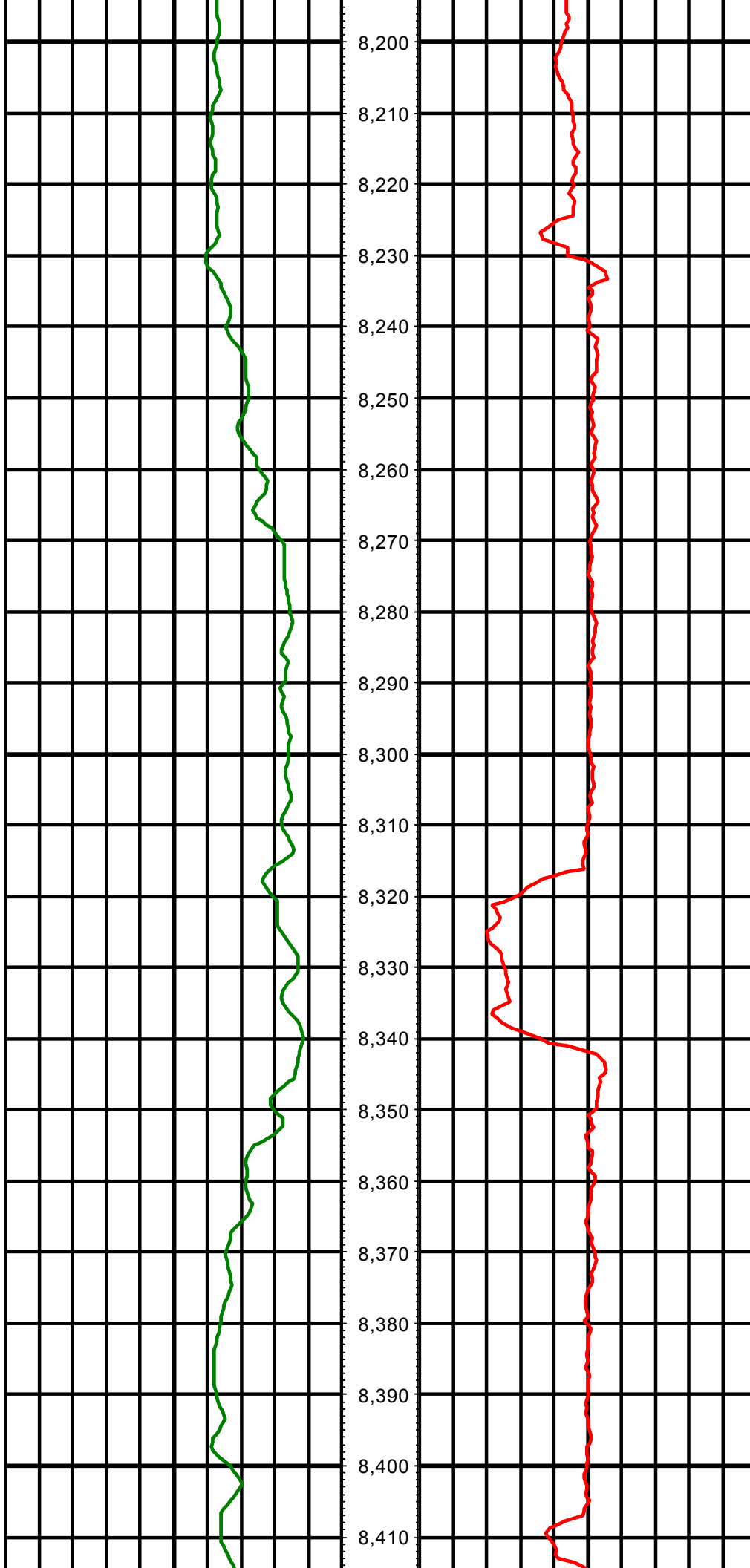
7,960

7,970

MD: 7808.00 INC: 91.20 AZ: 181.80

MD: 7900.00 INC: 88.80 AZ: 181.70





8,200

8,210

8,220

8,230

8,240

8,250

8,260

8,270

8,280

8,290

8,300

8,310

8,320

8,330

8,340

8,350

8,360

8,370

8,380

8,390

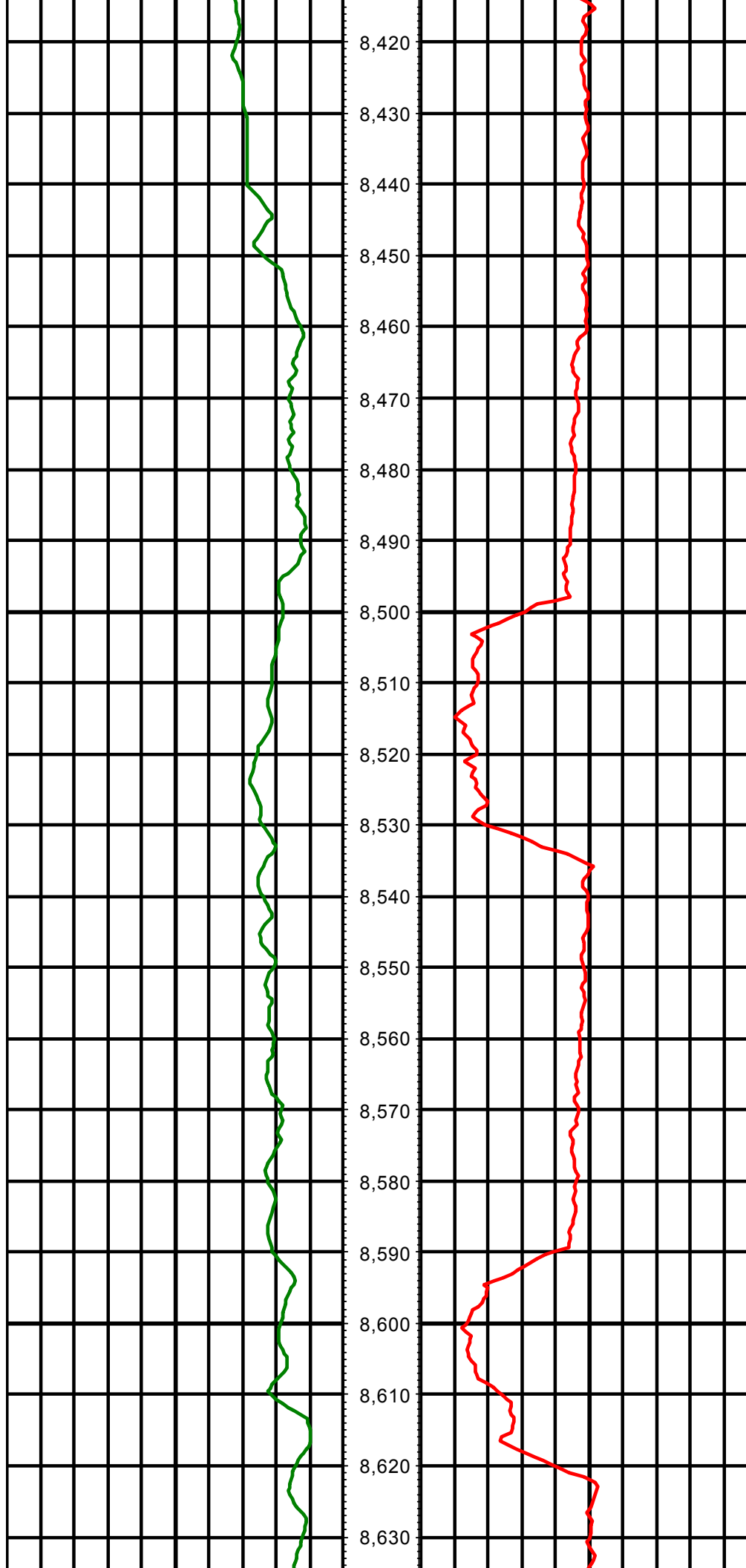
8,400

8,410

MD: 8265.00 INC: 90.50 AZ: 181.00

MD: 8356.00 INC: 89.30 AZ: 179.50

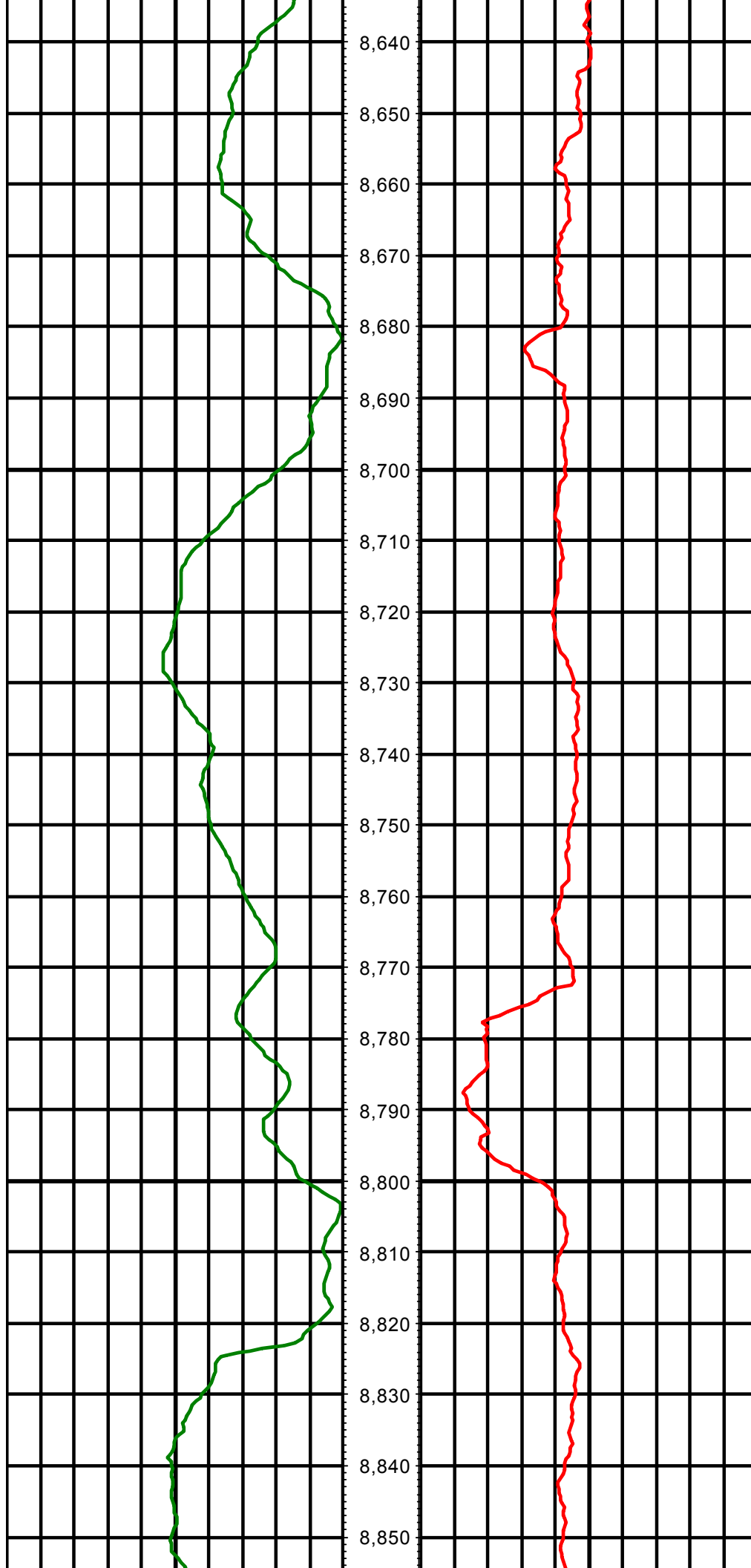




MD: 8447.00 INC: 90.90 AZ: 179.80

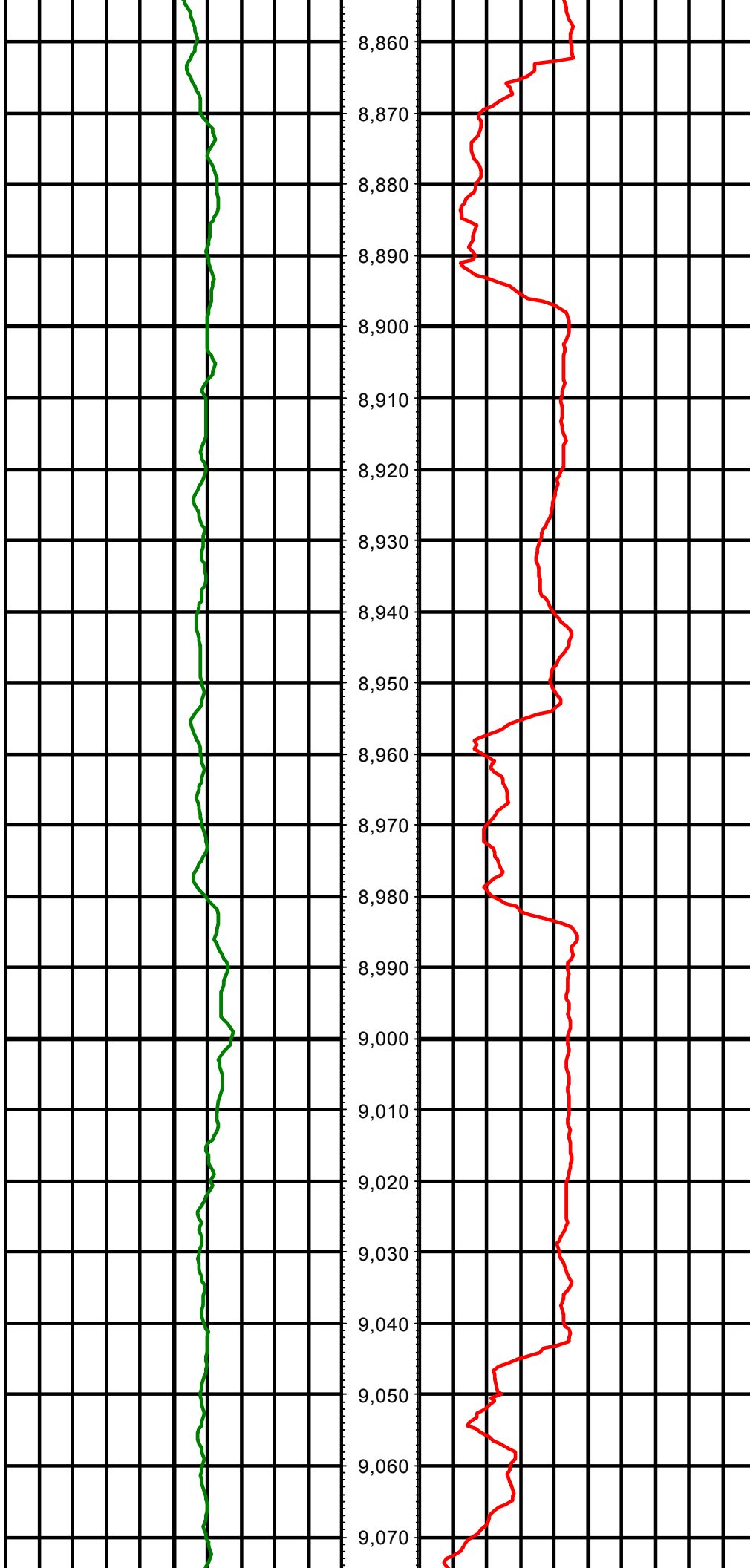
MD: 8538.00 INC: 89.80 AZ: 177.70

MD: 8629.00 INC: 88.10 AZ: 177.80



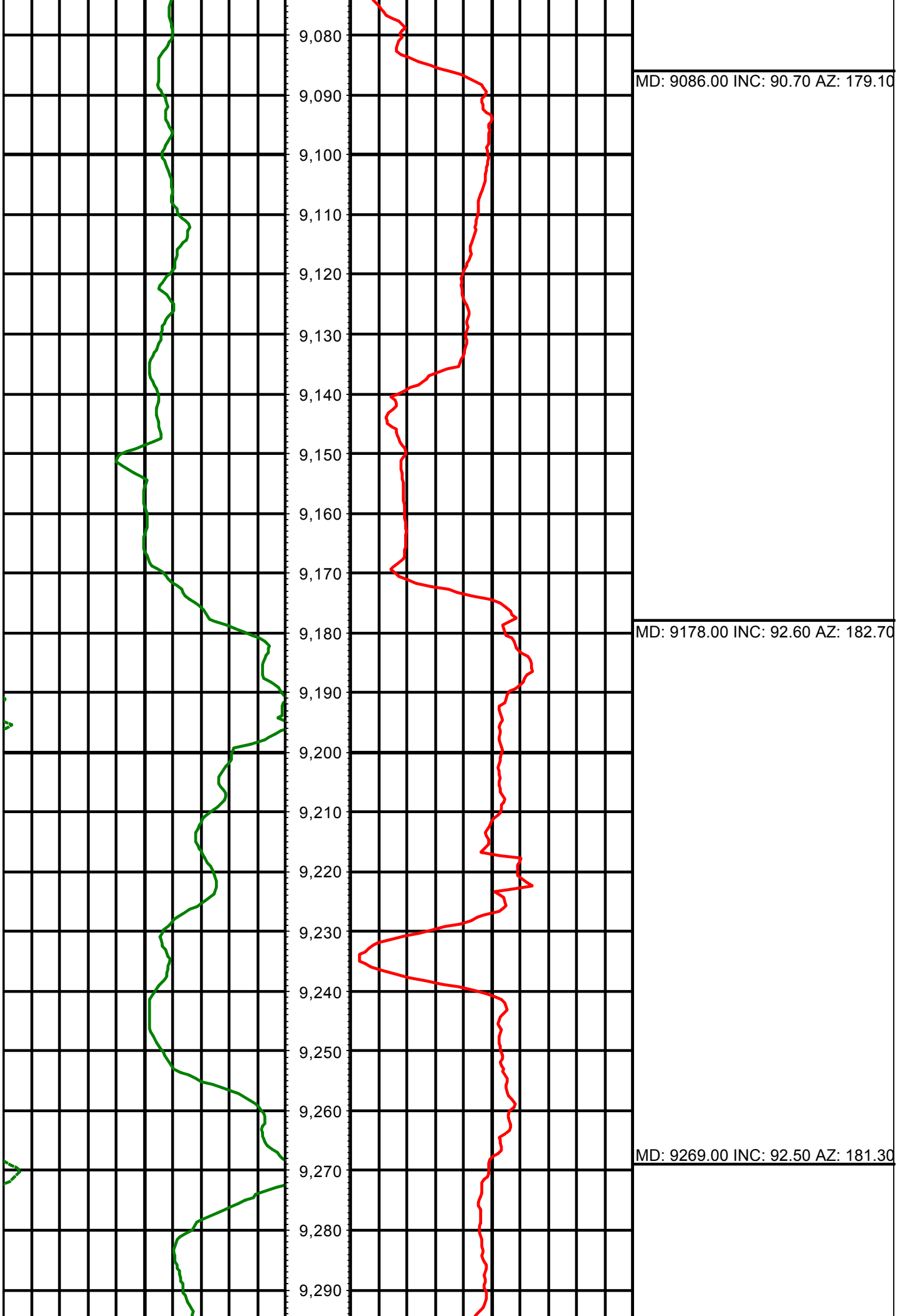
MD: 8721.00 INC: 88.40 AZ: 177.50

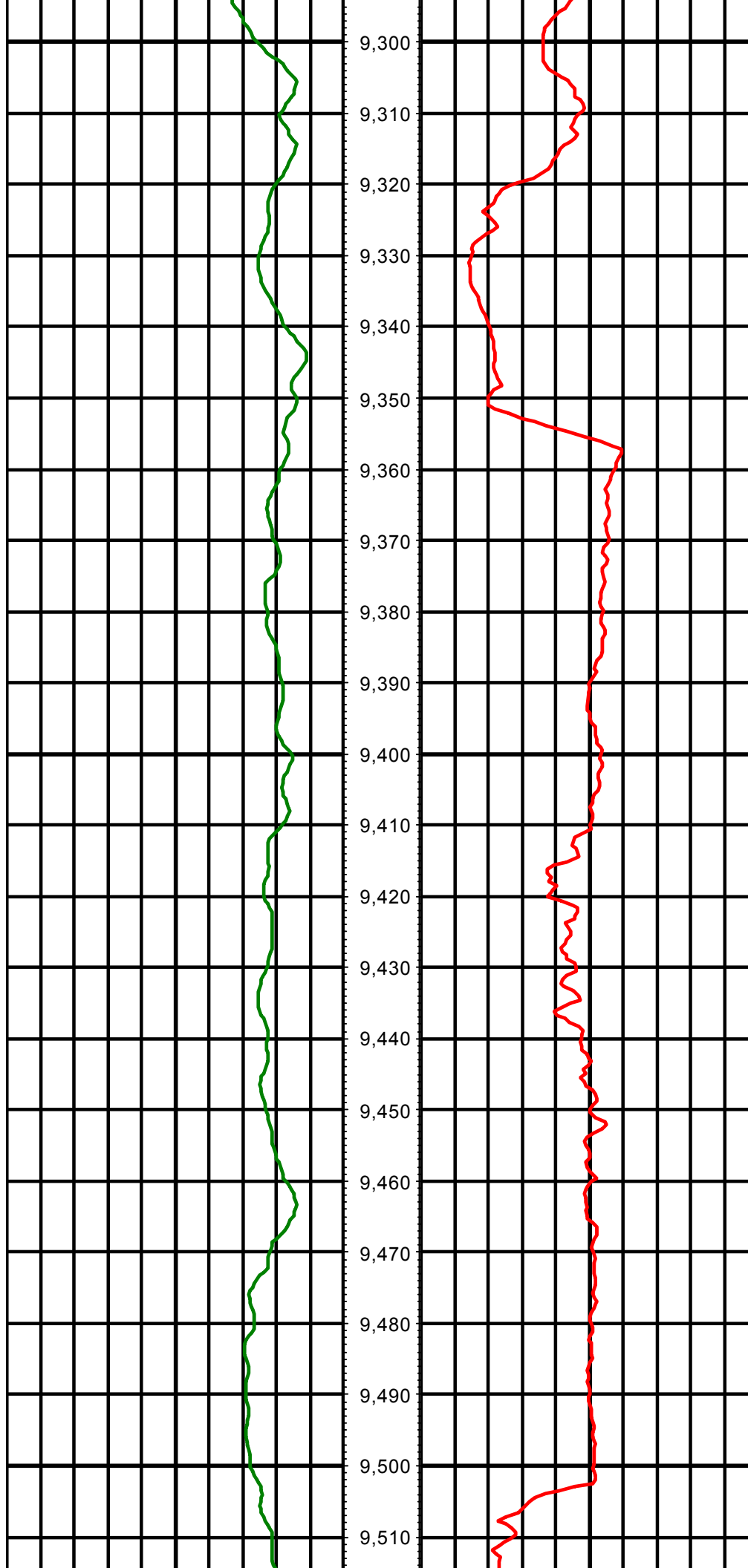
MD: 8812.00 INC: 88.00 AZ: 178.20



MD: 8903.00 INC: 89.80 AZ: 177.90

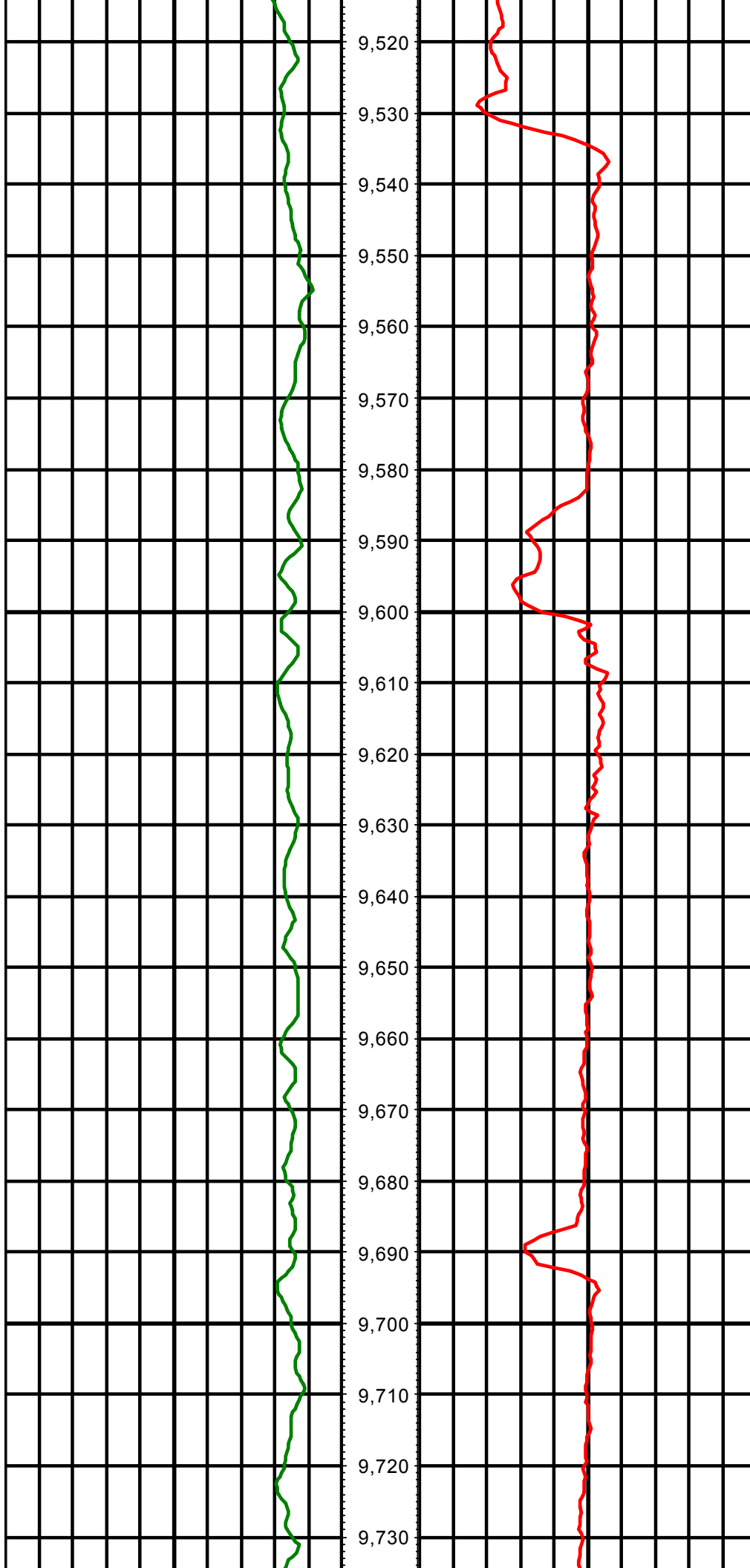
MD: 8995.00 INC: 90.10 AZ: 178.00





MD: 9360.00 INC: 90.40 AZ: 181.50

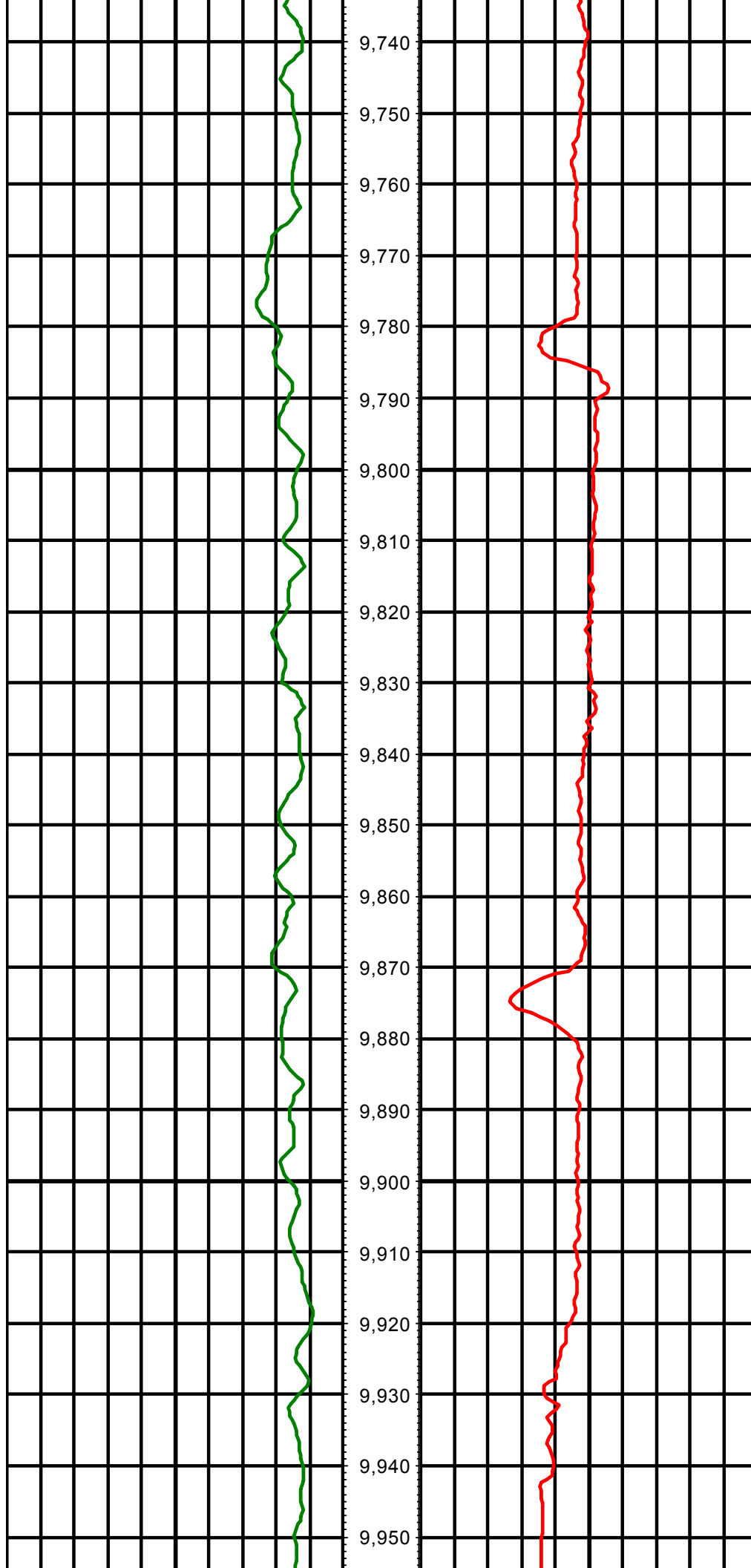
MD: 9452.00 INC: 89.10 AZ: 179.20



MD: 9544.00 INC: 90.10 AZ: 181.50

MD: 9635.00 INC: 90.30 AZ: 181.90

MD: 9727.00 INC: 90.10 AZ: 180.80



MD: 9819.00 INC: 90.50 AZ: 181.20

MD: 9911.00 INC: 90.00 AZ: 179.90



9,960

9,970

9,980

9,990

10,000

10,010

10,020

10,030

10,040

10,050

10,060

10,070

10,080

10,090

10,100

10,110

10,120

10,130

10,140

10,150

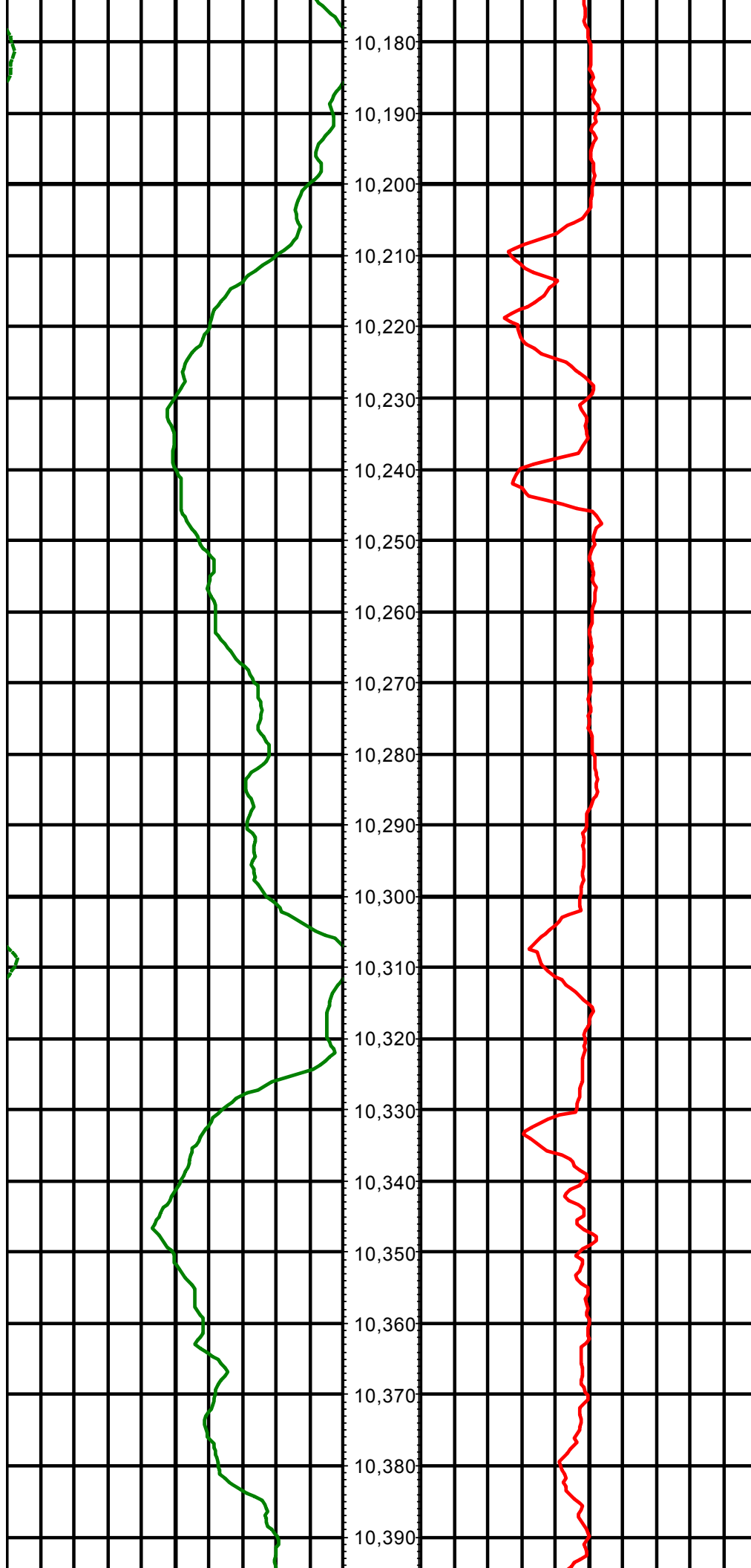
10,160

10,170

MD: 10003.00 INC: 90.50 AZ: 180.0

MD: 10094.00 INC: 89.20 AZ: 180.0





MD: 10186.00 INC: 88.60 AZ: 180.2

MD: 10278.00 INC: 88.40 AZ: 179

MD: 10369.00 INC: 87.90 AZ: 179



MD: 10461.00 INC: 90.90 AZ: 179.8

MD: 10552.00 INC: 91.10 AZ: 178

