
WPX ENERGY ROCKY MOUNTAIN LLC-EBUS

**RGU 314-23-198
RYAN GULCH
Rio Blanco County , Colorado**

Cement Multiple Stages **14-Apr-2013**

Post Job Report

The Road to Excellence Starts with Safety

Sold To #: 300721	Ship To #: 300721	Quote #:	Sales Order #: 900360429
Customer: WPX ENERGY ROCKY MOUNTAIN LLC-EBUS		Customer Rep: Ragsdale, Ted	
Well Name: RGU		Well #: 314-23-198	API/UWI #:
Field: RYAN GULCH	City (SAP): TULSA	County/Parish: Rio Blanco	State: Colorado
Contractor: CYCLONE 29		Rig/Platform Name/Num: CYCLONE 29	
Job Purpose: Cement Multiple Stages			
Well Type: Development Well		Job Type: Cement Multiple Stages	
Sales Person: MAYO, MARK		Srvc Supervisor: CHASTAIN, DERICK	MBU ID Emp #: 455848

Job Personnel

HES Emp Name	Exp Hrs	Emp #	HES Emp Name	Exp Hrs	Emp #	HES Emp Name	Exp Hrs	Emp #
BANKS, BRENT A	0.0	371353	CHASTAIN, DERICK Allan	0.0	455848	KAMMEIER, CHRISTOPHER Michael	0.0	524554
KEANE, JOHN Donovon	0.0	486519	PONDER, THOMAS Lynn	0.0	427112			

Equipment

HES Unit #	Distance-1 way	HES Unit #	Distance-1 way	HES Unit #	Distance-1 way	HES Unit #	Distance-1 way
10567589C	30 mile	10722398	30 mile	10867304	30 mile	10867423	30 mile
10951251	30 mile	10998054	30 mile	11139330	30 mile	11562538	30 mile
11808829	30 mile						

Job Hours

Date	On Location Hours	Operating Hours	Date	On Location Hours	Operating Hours	Date	On Location Hours	Operating Hours

TOTAL		Total is the sum of each column separately
-------	--	--

Job

Formation Name	Top	Bottom	Called Out	Date	Time	Time Zone
Formation Depth (MD)			On Location	13 - Apr - 2013	06:15	MST
Form Type		BHST	Job Started	13 - Apr - 2013	14:00	MST
Job depth MD	3854. ft	Job Depth TVD	Job Started	13 - Apr - 2013	22:15	MST
Water Depth		Wk Ht Above Floor	Job Completed	14 - Apr - 2013	02:56	MST
Perforation Depth (MD)	From	To	Departed Loc	14 - Apr - 2013	04:00	MST

Well Data

Description	New / Used	Max pressure psig	Size in	ID in	Weight lbm/ft	Thread	Grade	Top MD ft	Bottom MD ft	Top TVD ft	Bottom TVD ft
OPEN HOLE				13.5				1750.	3845.		
OPEN HOLE				14.75				.	1750.		
SURFACE CASING	New		9.625	8.921	36.		I-80	.	3845.		

Tools and Accessories

Type	Size	Qty	Make	Depth	Type	Size	Qty	Make	Depth	Type	Size	Qty	Make
Guide Shoe					Packer					Top Plug			
Float Shoe					Bridge Plug					Bottom Plug			
Float Collar					Retainer					SSR plug set			
Insert Float										Plug Container			
Stage Tool										Centralizers			

Miscellaneous Materials

Gelling Agt	Conc	Surfactant	Conc	Acid Type	Qty	Conc	%
Treatment Fld	Conc	Inhibitor	Conc	Sand Type	Size	Qty	

Fluid Data

Stage/Plug #: 1

Fluid #	Stage Type	Fluid Name	Qty	Qty uom	Mixing Density lbm/gal	Yield ft3/sk	Mix Fluid Gal/sk	Rate bbl/min	Total Mix Fluid Gal/sk
1	Fresh Water Spacer		40.00	bbl	8.33	.0	.0	.0	
2	VersaCem GJ1 1st Stage Lead	VERSACEM (TM) SYSTEM (452010)	800.0	sacks	12.8	1.77	9.34		9.34
9.34 Gal		FRESH WATER							
3	VersaCem GJ2 1st Stage tail	VERSACEM (TM) SYSTEM (452010)	310.0	sacks	12.8	1.96	10.95		10.95
10.95 Gal		FRESH WATER							
4	Displacement		296.00	bbl	8.33	.0	.0	.0	
5	Fresh Water Spacer		20.00	bbl	8.33	.0	.0	.0	
6	VersaCem GJ2 2nd Stage Tail	VERSACEM (TM) SYSTEM (452010)	1055.0	sacks	12.8	1.96	10.95		10.95
10.95 Gal		FRESH WATER							
7	Displacement		140.00	bbl	8.33	.0	.0	.0	
8	HalCem TopOut	HALCEM (TM) SYSTEM (452986)		sacks	15.8	1.15	4.98		4.98
4.98 Gal		FRESH WATER							
Calculated Values		Pressures		Volumes					
Displacement		Shut In: Instant		Lost Returns		Cement Slurry		Pad	
Top Of Cement		5 Min		Cement Returns		Actual Displacement		Treatment	
Frac Gradient		15 Min		Spacers		Load and Breakdown		Total Job	
Rates									
Circulating		Mixing		Displacement		Avg. Job			
Cement Left In Pipe		Amount	0 ft	Reason	Shoe Joint				
Frac Ring # 1 @	ID	Frac ring # 2 @	ID	Frac Ring # 3 @	ID	Frac Ring # 4 @	ID		
The Information Stated Herein Is Correct				Customer Representative Signature					

The Road to Excellence Starts with Safety

Sold To #: 300721		Ship To #: 300721		Quote #:		Sales Order #: 900360429	
Customer: WPX ENERGY ROCKY MOUNTAIN LLC-EBUS				Customer Rep: Ragsdale, Ted			
Well Name: RGU			Well #: 314-23-198			API/UWI #:	
Field: RYAN GULCH		City (SAP): TULSA		County/Parish: Rio Blanco		State: Colorado	
Legal Description:							
Lat:				Long:			
Contractor: CYCLONE 29			Rig/Platform Name/Num: CYCLONE 29				
Job Purpose: Cement Multiple Stages						Ticket Amount:	
Well Type: Development Well			Job Type: Cement Multiple Stages				
Sales Person: MAYO, MARK			Srv Supervisor: CHASTAIN, DERICK			MBU ID Emp #: 455848	

Activity Description	Date/Time	Cht #	Rate bbl/min	Volume bbl		Pressure psig		Comments
				Stage	Total	Tubing	Casing	
Call Out	04/13/2013 06:15							DISPATCH CALLS OUT CREW
Pre-Convoy Safety Meeting	04/13/2013 09:30							ALL HES EMPLOYEES
Arrive At Loc	04/13/2013 14:00							RIG TRIPPING OUT DRILL PIPE
Assessment Of Location Safety Meeting	04/13/2013 14:30							ALL HES EMPLOYEES
Rig-Up Equipment	04/13/2013 20:00							1 PUMP TRUCK, 1 660 BULK TRUCKS, 1 F 450 P/U
Pre-Job Safety Meeting	04/13/2013 22:00							ALL HES EMPLOYEES, RIG CREW, CO REP.
Start Job	04/13/2013 22:15							TD 3854', TP 3847.78', SJ 29.1', FC 3818.67', HOLE 14 3/4" TO 1750', 13 1/2" TO TD, MUD WT 9.4 PPG. 9 5/8 " CSG 36#. DV TOOL SET AT 1803.38 FT.
Pump Water	04/13/2013 22:16		2	4			110.0	FILL LINES
Pressure Test	04/13/2013 22:18							LOW TEST AT 1441 PSI THE TESTED TO 3120 PSI. HELD PRESSURE 2 MIN. NO LEAKS
Pump Spacer 1	04/13/2013 22:25		6	40			275.0	FRESH WATER
Pump 1st Stage Lead Slurry	04/13/2013 22:38		6	252.2			370.0	1ST STAGE: 800 SKS, 12.8 PPG, 1.77 YIELD, 9.34 GAL/SK, WET AND DRY SAMPLES SUBMITTED.
Activity Description	Date/Time	Cht #	Rate bbl/min	Volume bbl		Pressure psig		Comments
				Stage	Total	Tubing	Casing	

Sold To # : 300721

Ship To # :300721

Quote # :

Sales Order # : 900360429

SUMMIT Version: 7.3.0078

Thursday, May 02, 2013 01:55:00

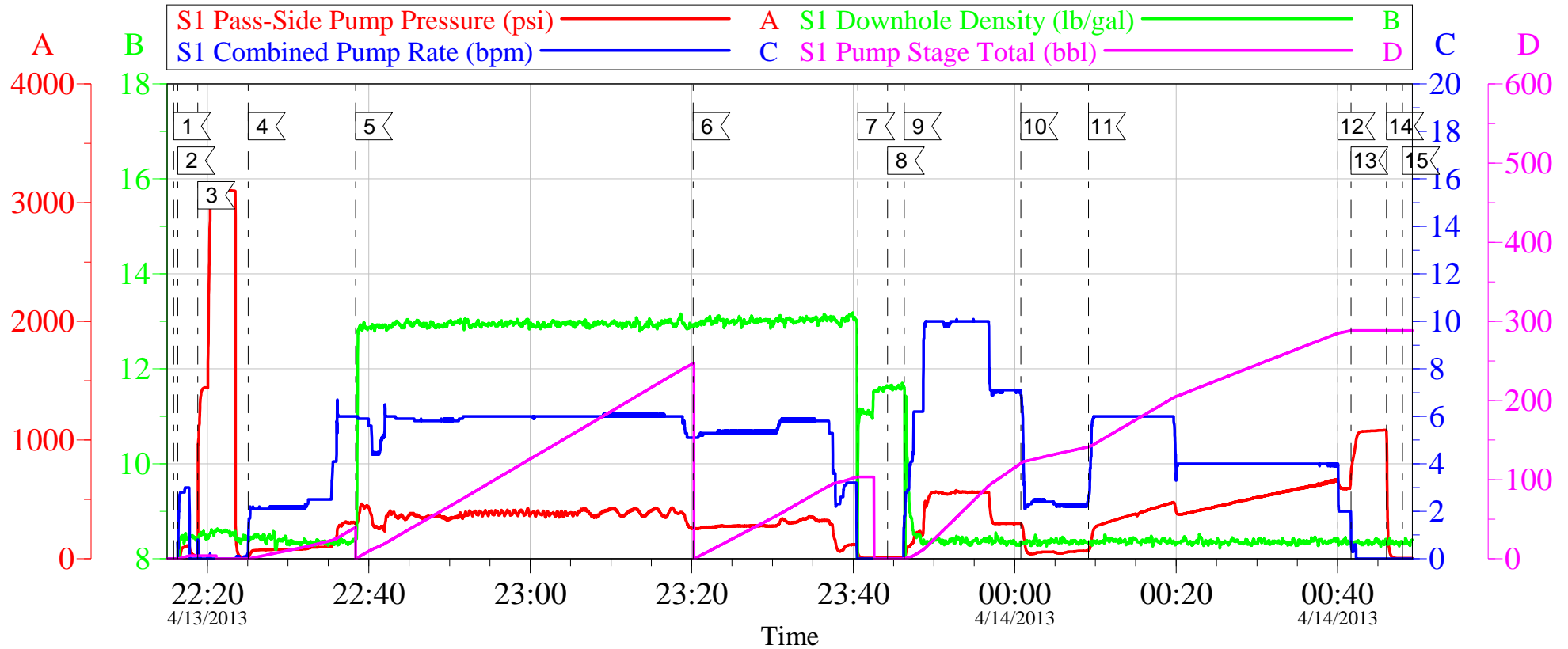
Pump 1st Stage Tail Slurry	04/13/2013 23:20		6	108.2			350.0	1ST STAGE: 310 SKS, 12.8 PPG, 1.96 YIELD, 10.95 GAL/SK, WET AND DRY SAMPLES SUBMITTED.
Shutdown	04/13/2013 23:40							
Drop Plug	04/13/2013 23:44							VERIFY PLUG LAUNCHED
Pump Displacement	04/13/2013 23:46		10	295.2			300.0	140 BBLS OF LOST RETURNS.
Slow Rate	04/14/2013 00:00		2				210.0	5 BBLS PRIOR TO PLUG PASSING THRU TOOL. PRESSURE SPIKE NOTED
Resume	04/14/2013 00:09		6				290.0	
Slow Rate	04/14/2013 00:40		2				592.0	10 BBLS PRIOR TO BUMPING PLUG
Bump Plug	04/14/2013 00:41		2				1085. 0	PLUG LANDED AT 670 PSI. HOLD FOR 1 MINUTE
Check Floats	04/14/2013 00:46							FLOATS HOLDING, 1 1/2 BBL RETURNED BACK TO PUMP
Drop Opening Device For Multiple Stage Cementer	04/14/2013 00:48							DROP BOMB WAIT 12 MINUTES
Pump Spacer 1	04/14/2013 01:02		6	20			300.0	FRESH WATER
Open Multiple Stage Cementer	04/14/2013 01:02							TOOL OPENED AT 540 PSI
Pump 2nd Stage Tail Slurry	04/14/2013 01:08		6	368.3			400.0	2ND STAGE: 1055 SKS, 12.8 PPG, 1.96 YIELD, 10.95 GAL/SK. WET AND DRY SAMPLES SUBMITTED.
Shutdown	04/14/2013 02:17							
Drop Plug	04/14/2013 02:18							VERIFY PLUG LAUNCH
Pump Displacement	04/14/2013 02:19		6	139.4			580.0	GOOD RETURNS THROUGH OUT DISPLACEMENT. CEMENT RETURNS USED TO TOP OFF PREVIOUS WELLS. RGU 24-23-198 TOOK 40 BBLS, 513-23-198 TOOK 50 BBLS, 313-23- 198 TOOK 50 BBLS.
Slow Rate	04/14/2013 02:51		2				480.0	10 BBLS PRIOR TO BUMPING PLUG

Cementing Job Log

Activity Description	Date/Time	Cht #	Rate bbl/ min	Volume bbl		Pressure psig		Comments
				Stage	Total	Tubing	Casing	
Close Multiple Stage Cementer	04/14/2013 02:56		2				1705. 0	2705 PSI TO CLOSE MSC TOOL
Release Casing Pressure	04/14/2013 03:00						.0	FLOATS HOLDING, 1 1/2 BBL RETURNED BACK TO PUMP
End Job	04/14/2013 03:00							NO SUGAR USED, 5 ADD HOURS, NO DERRICK CHARGE
Post-Job Safety Meeting (Pre Rig-Down)	04/14/2013 03:15							ALL HES EMPLOYEES
Rig-Down Equipment	04/14/2013 03:30							
Pre-Convoy Safety Meeting	04/14/2013 03:50							ALL HES EMPLOYEES
Crew Leave Location	04/14/2013 04:00							LOCATION LEFT FREE OF DEBRESS
Comment	04/14/2013 04:00							THANK YOU FOR CHOOSING HALLIBURTON. DERICK CHASTAIN AND CREW.

WPX ENERGY - RGU 314-23-198

9 5/8" SURFACE CASING - 1ST STAGE



Local Event Log

1	START JOB	4/13/2013 22:15:49	2	FILL LINES	4/13/2013 22:16:20
3	TEST LINES	4/13/2013 22:18:49	4	PUMP H2O SPACER	4/13/2013 22:25:05
5	PUMP LEAD CEMENT	4/13/2013 22:38:21	6	PUMP TAIL CEMENT	4/13/2013 23:20:10
7	SHUTDOWN	4/13/2013 23:40:34	8	DROP 1ST STG PLUG	4/13/2013 23:44:15
9	PUMP DISPLACEMENT	4/13/2013 23:46:18	10	SLOW RATE	4/14/2013 00:00:47
11	RESUME RATE	4/14/2013 00:09:09	12	SLOW RATE	4/14/2013 00:40:03
13	BUMP PLUG	4/14/2013 00:41:39	14	CHECK FLOATS	4/14/2013 00:46:04
15	DROP BOMB	4/14/2013 00:48:03			

Customer: WPX
Well Description: RGU 314-23-198
Company Rep: TED RAGSDALE

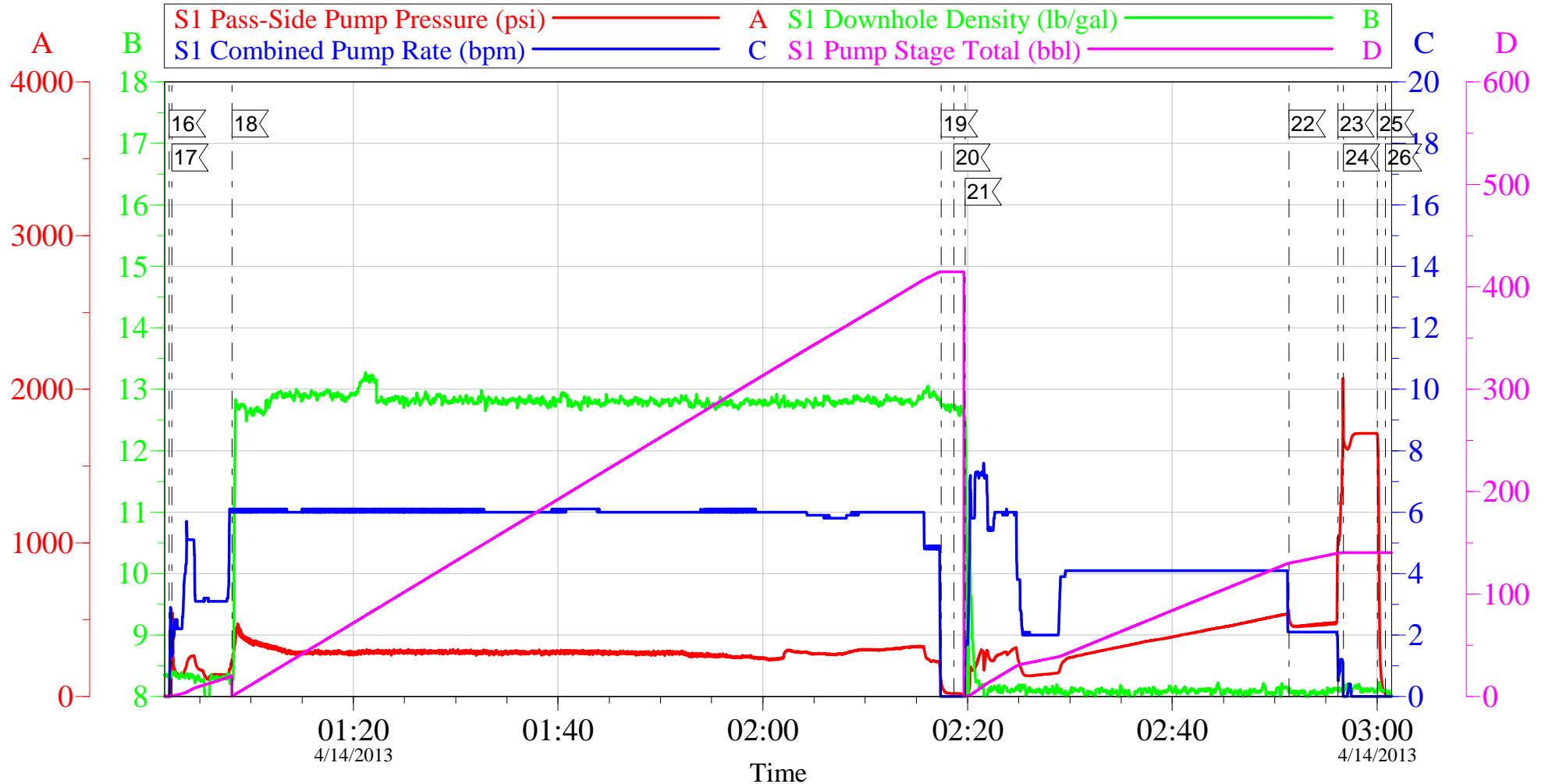
Job Date: 13-Apr-2013
Job Type: SURFACE
Cement Supervisor: DERICK CHASTAIN

Sales Order #: 900360429
ADC Used: YES
Elite #3: BRENT BANKS

OptiCem v6.4.21
14-Apr-13 04:42

WPX ENERGY - RGU 314-23-198

9 5/8" SURFACE CASING - 2ND STAGE



Local Event Log

16	OPEN DV TOOL	01:02:01	17	PUMP H2O SPACER	01:02:16	18	PUMP TAIL CEMENT	01:08:10
19	SHUTDOWN	02:17:26	20	DROP CLOSING PLUG	02:18:39	21	PUMP DISPLACEMENT	02:19:45
22	SLOW RATE	02:51:25	23	BUMP PLUG	02:56:10	24	CLOSE DV TOOL	02:56:43
25	CHECK FLOATS	03:00:03	26	END JOB	03:00:49			

Customer: WPX
Well Description: RGU 314-23-198
Company Rep: TED RAGSDALE

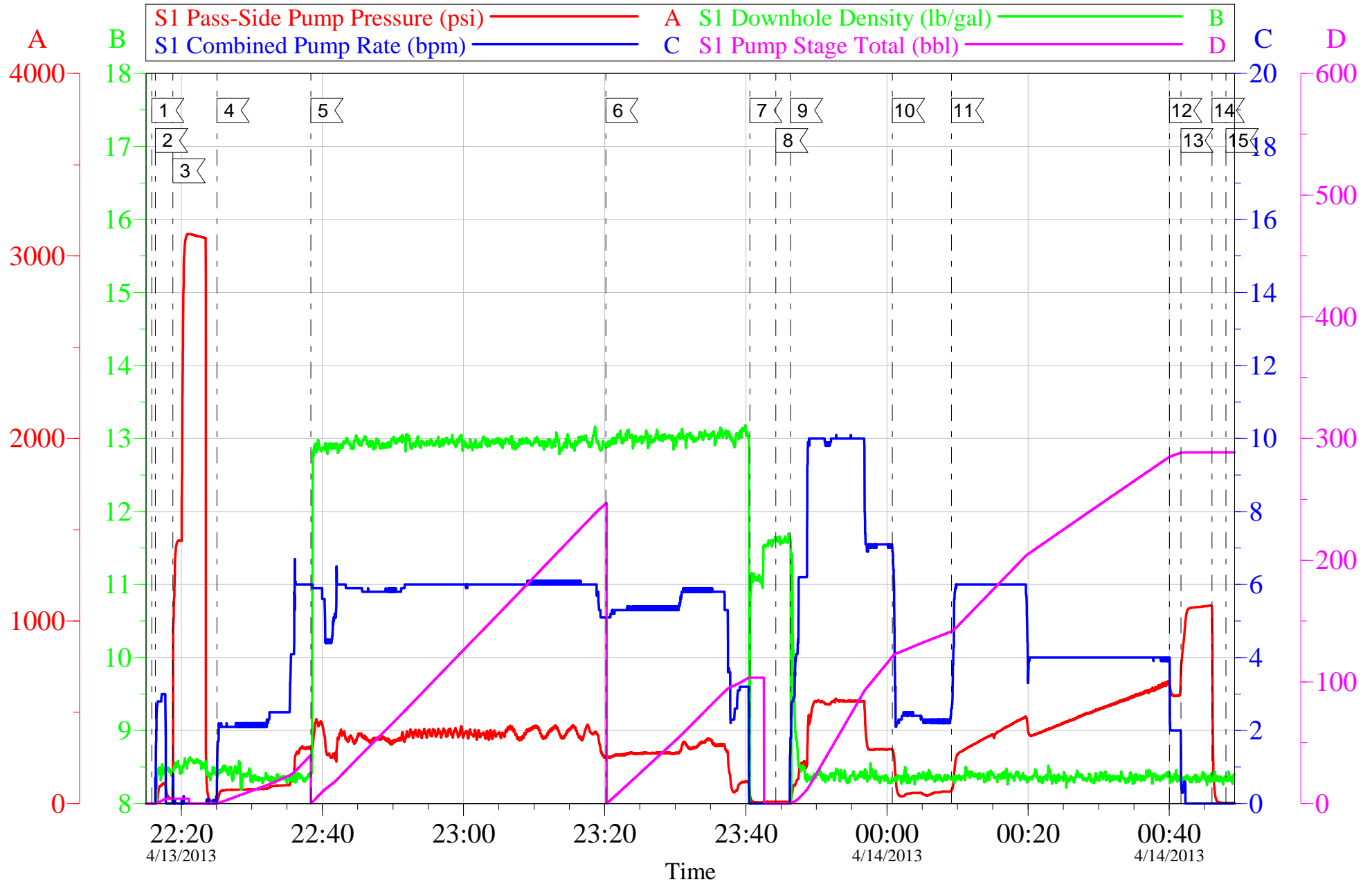
Job Date: 13-Apr-2013
Job Type: SURFACE
Cement Supervisor: DERICK CHASTAIN

Sales Order #: 900360429
ADC Used: YES
Elite #3: BRENT BANKS

OptiCem v6.4.21
14-Apr-13 04:44

WPX ENERGY - RGU 314-23-198

9 5/8" SURFACE CASING - 1ST STAGE

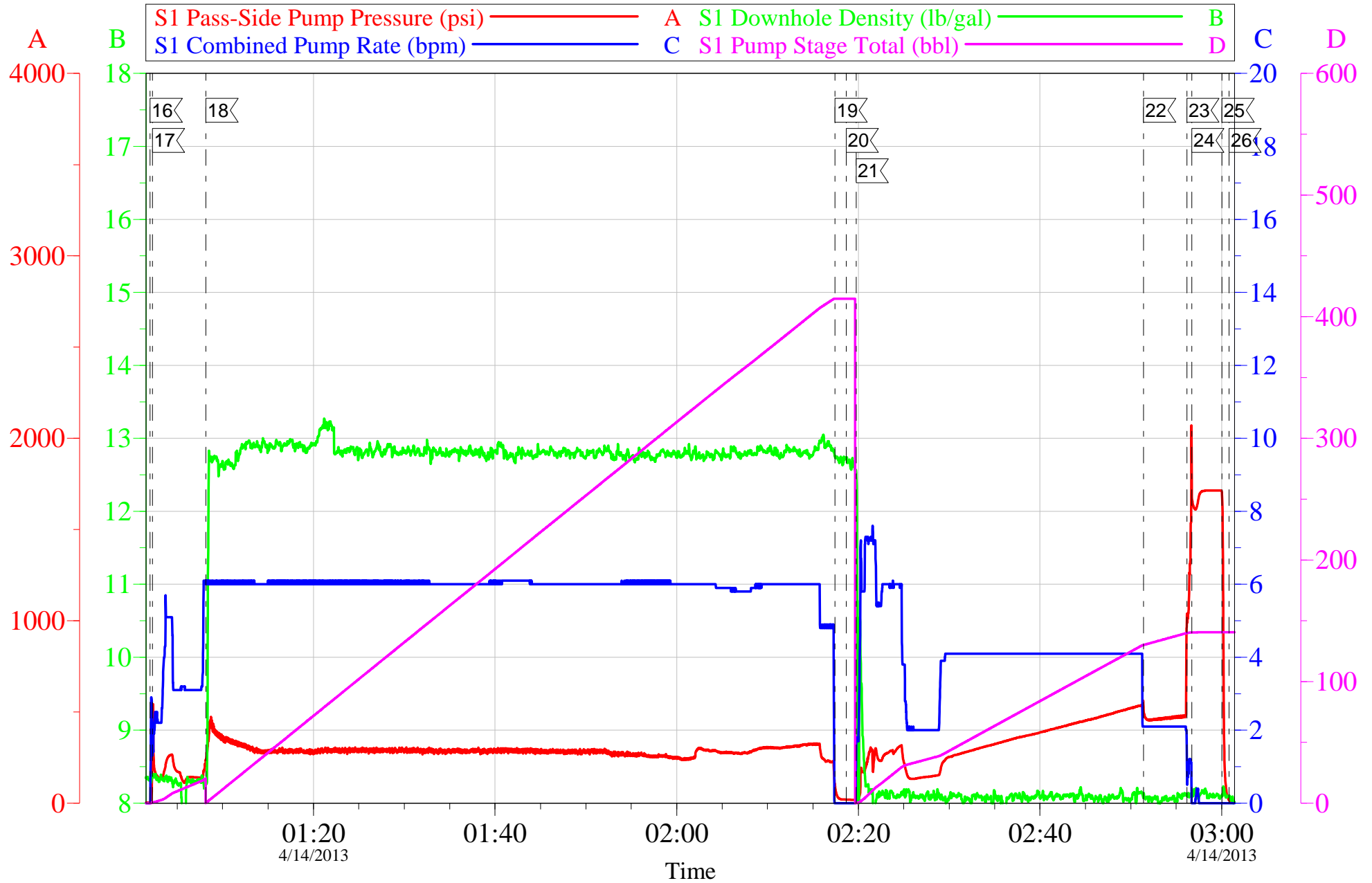


Customer: WPX	Job Date: 13-Apr-2013	Sales Order #: 900360429
Well Description: RGU 314-23-198	Job Type: SURFACE	ADC Used: YES
Company Rep: TED RAGSDALE	Cement Supervisor: DERICK CHASTAIN	Elite #3: BRENT BANKS

OptiCem v6.4.21
14-Apr-13 04:43

WPX ENERGY - RGU 314-23-198

9 5/8" SURFACE CASING - 2ND STAGE



Customer: WPX
Well Description: RGU 314-23-198
Company Rep: TED RAGSDALE

Job Date: 13-Apr-2013
Job Type: SURFACE
Cement Supervisor: DERICK CHASTAIN

Sales Order #: 900360429
ADC Used: YES
Elite #3: BRENT BANKS

OptiCem v6.4.21
14-Apr-13 04:44