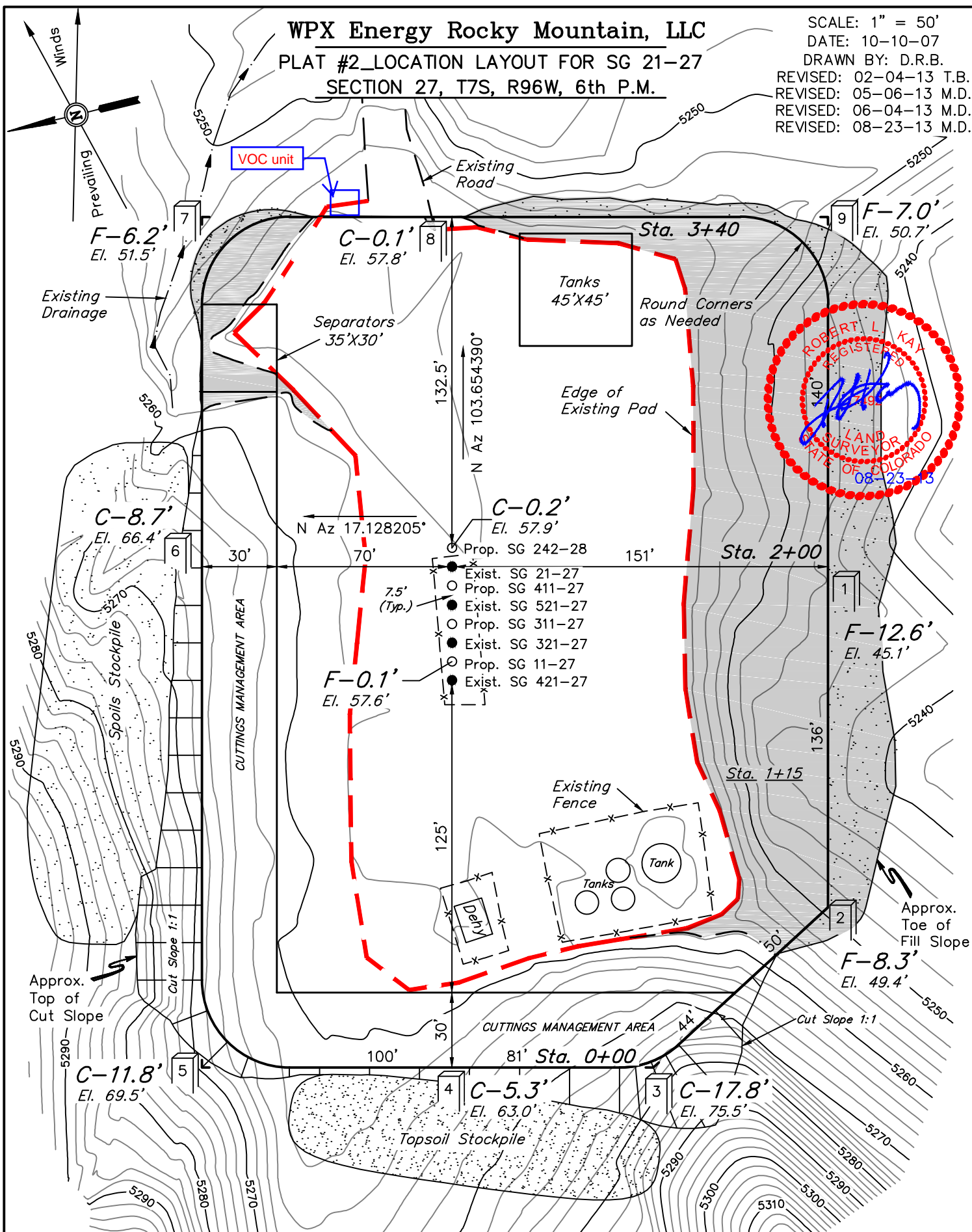


SECTION 27, T7S, R96W, 6th P.M.

REVISÉ: 08-23-13 M.D.



Elev. Ungraded Ground At SG 21-27 Well Head = 5257.7'
FINISHED GRADE ELEV. AT SG 21-27 WELL HEAD = 5257.7'

UINTAH ENGINEERING & LAND SURVEYING
85 So. 200 East * Vernal, Utah 84078 * (435) 789-1017