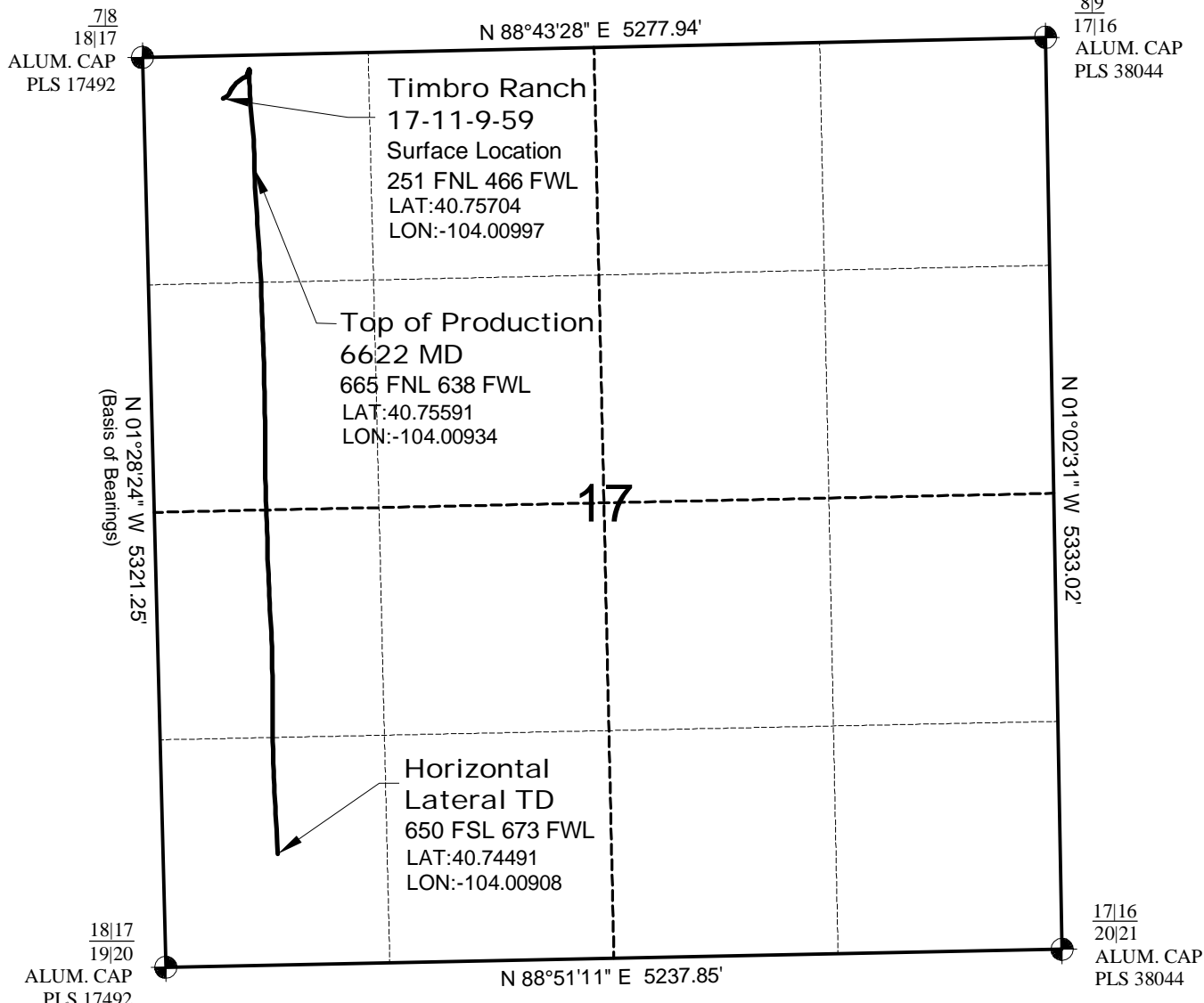


AS-DRILLED MAP

**TIMBRO RANCH
17-11-9-59 PAD**

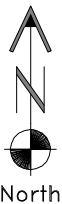


SURVEYOR'S STATEMENT

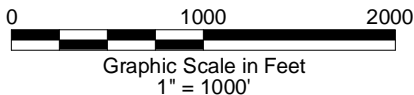
The undersigned hereby states that the as-drilled lateral as shown hereon was plotted from the directional survey report prepared by Precision Directional Services (See Note 2).

NOTES

- 1.) Refer to well location map on record at COGCC.
- 2.) Directional data provided by Precision Directional Services.
Report Date: 3/20/13 Created by: Shane Nelson
- 3.) Distances to nearest section lines are measured perpendicularly.
- 4.) Date of Conductor As-built 6/4/13; Date of Drawing 11/4/13. REV 0
PDOP Reading: 2.0 Instrument Operator: Marc Woodard



North



GEO SURV
LAND SURVEYING AND MAPPING
LAFAYETTE - WINTER PARK
Ph 303 666 0379 Fx 303 665 6320

**CARRIZO NIOBRARA LLC
TIMBRO RANCH 17-11-9-59**

**SL NW1/4 NW1/4 SEC.17 T9N R59W
HL TD SW1/4 SW1/4 SEC.17 T9N R59W
6th PM WELD COUNTY COLORADO**