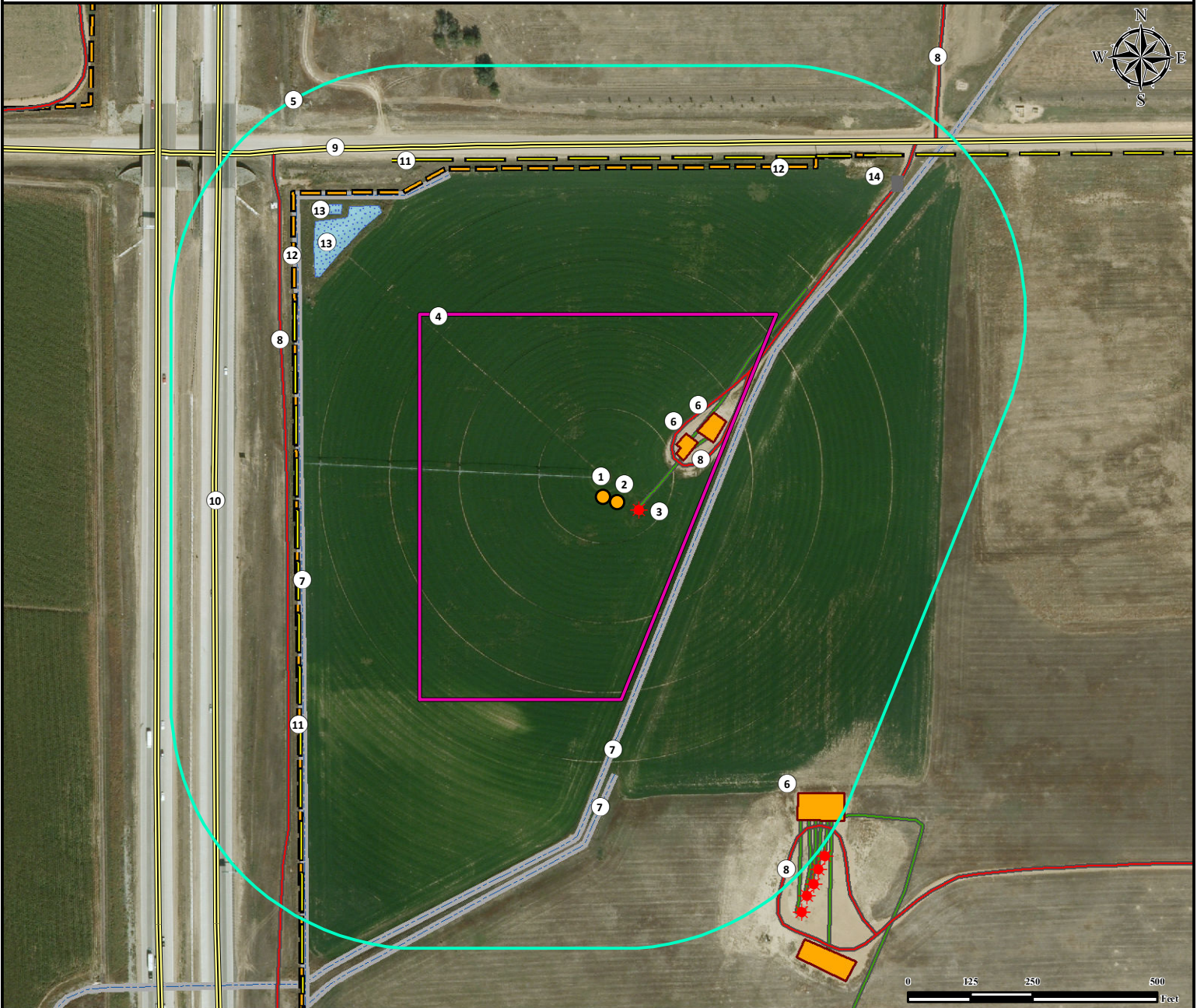


Location Drawing

HANSEN STATE 1N-36HZ

Horizontal Multi Well Pad

NW¼ NW¼ SECTION 35, TOWNSHIP 3 NORTH, RANGE 68 WEST OF THE 6TH PRINCIPAL MERIDIAN



- | | | |
|--|---|---|
| 1. Proposed Well HANSEN STATE 26C-36HZ. | 6. Existing Facilities are ±152' NE, ±215' NE, and ±687' SE. | 9. County Road 28 is ±719' N. |
| 2. Proposed Well HANSEN STATE 1N-36Z. | 7. Concrete Ditches are ±173' SE, ±547' S, and ±637' W. | 10. Highway I-25 is ±810' W. |
| 3. Existing Well CARL H. ADLER 2 is ±45' SE. | 8. Private Roads are ±144' NE, ±664' W, ±756' SE, and ±965' NE. | 11. Powerlines are ±643' W and ±691' N. |
| 4. Operational Disturbance Area. | | 12. Fences are ±644' W and ±672' N. |
| 5. 500' Radius. | | 13. Ponds are ±750' NW and ±803' NW. |
| | | 14. Gate is ±853' NE. |

Legend	
	Proposed Well
	Existing Well
	Gate
	Disturbance Area
	500' Radius
	Facility Enclosure
	Public Road
	Private Road
	Powerline
	Fence
	Concrete Ditch
	Pipeline
	Pond

Reference Location
 ** All measurements are made from Reference Well HANSEN STATE 1N-36HZ **
 Lat: 40.187735° Long: -104.977164° (NAD83)
 Elevation: 4936 Feet

Surface Use: Dry Land Crop

Nearest Building Unit: >1000' SW

PFS Petroleum Field Services
 Use our resources to find yours!
www.petro-fs.com
 (303) 928-7128

Field Date: 09/30/2013
 Drafting Date: 10/08/2013
 Drafter: CPO
 Revision:

Data Sources:
 - Aerial courtesy of Anadarko Petroleum Corporation (2010)

Prepared for: **Anadarko**
 Petroleum Corporation
KERR-MCGEE OIL & GAS ONSHORE LP