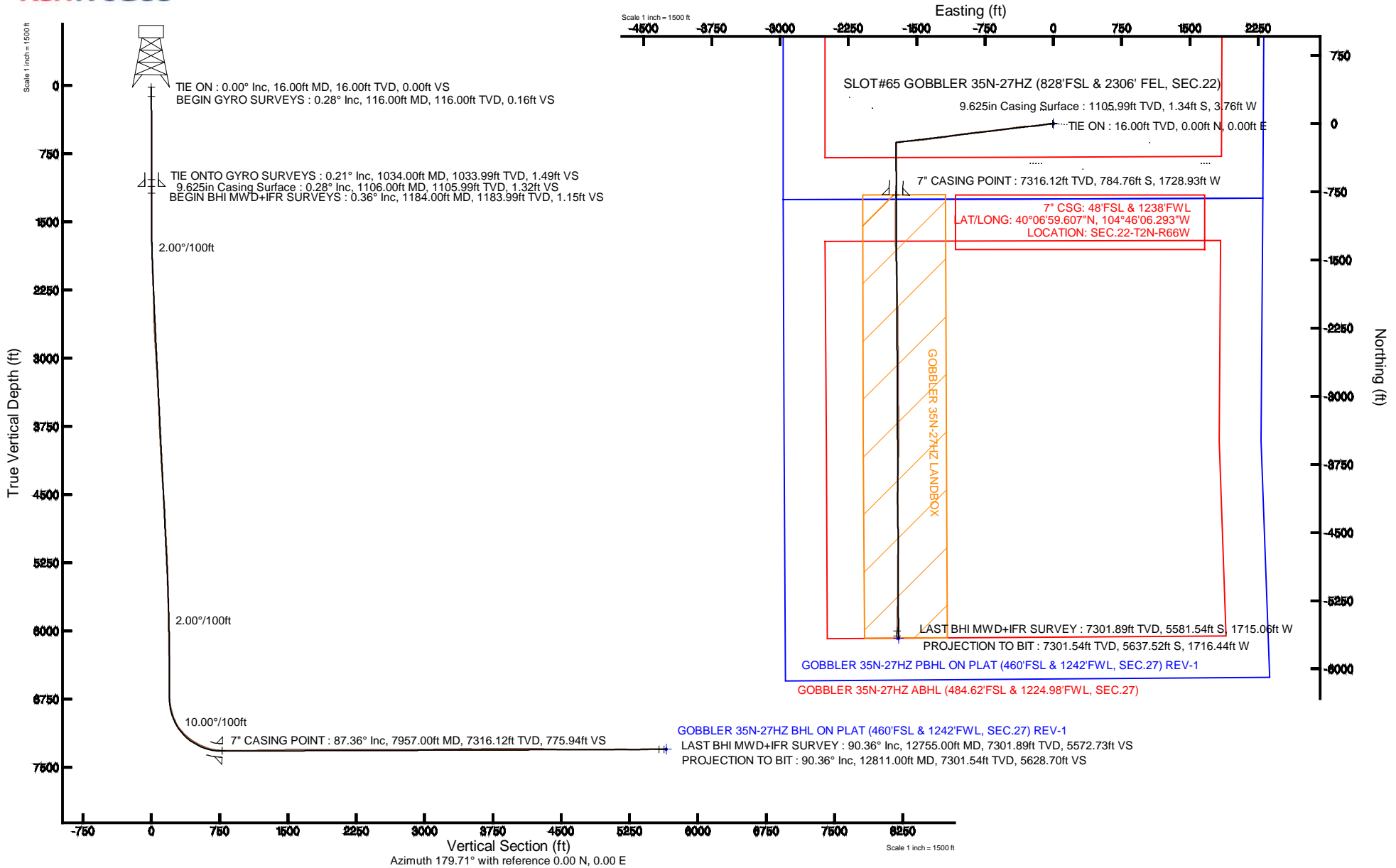


KERR-MCGEE OIL & GAS ONSHORE LP

Location: COLORADO Slot: SLOT#65 GOBBLER 35N-27HZ (828'FSL & 2306' FEL, SEC.22)
 Field: WELD COUNTY (KERR MCGEE) Well: GOBBLER 35N-27HZ
 Facility: SEC.22-T2N-R66W Wellbore: GOBBLER 35N-27HZ PWB

Plot reference wellpath is GOBBLER 35N-27HZ (REV-A.0) PWP

| | |
|--|--|
| True vertical depths are referenced to XTREME 20 (16KB) (RKB) | Grid System: NAD83 / Lambert Colorado SP, Northern Zone (601), US feet |
| Measured depths are referenced to XTREME 20 (16KB) (RKB) | North Reference: True north |
| XTREME 20 (16KB) (RKB) to Mean Sea Level: 5062 feet | Scale: True distance |
| Mean Sea Level to Mud line (At Slot: SLOT#65 GOBBLER 35N-27HZ (828'FSL & 2306' FEL, SEC.22)): 0 feet | Depths are in feet |
| Coordinates are in feet referenced to Slot | Created by: robiale01 on 23/Jan/2014 |



| REFERENCE WELLPATH IDENTIFICATION | | | |
|-----------------------------------|--|----------|---|
| Operator | KERR-MCGEE OIL & GAS ONSHORE LP | Slot | SLOT#65 GOBBLER 35N-27HZ (828'FSL & 2306' FEL, SEC.22) |
| Area | COLORADO | Well | GOBBLER 35N-27HZ |
| Field | WELD COUNTY (KERR MCGEE) | Wellbore | GOBBLER 35N-27HZ AWB |
| Facility | SEC.22-T2N-R66W | | |

| REPORT SETUP INFORMATION | | | |
|--------------------------|--|----------------------|---|
| Projection System | NAD83 / Lambert Colorado SP, Northern Zone (501), US feet | Software System | WellArchitect® 4.0.0 |
| North Reference | True | User | Robiale01 |
| Scale | 0.999959 | Report Generated | 23/Jan/2014 at 14:36 |
| Convergence at slot | n/a | Database/Source file | WellArchitectDB/GOBBLER_35N-27HZ_AWB.xml |

| WELLPATH LOCATION | | | | | | |
|-----------------------|-------------------|----------|-------------------|-------------------|------------------------|------------------------|
| | Local coordinates | | Grid coordinates | | Geographic coordinates | |
| | North[ft] | East[ft] | Easting[US ft] | Northing[US ft] | Latitude | Longitude |
| Slot Location | -3970.38 | 2492.47 | 3206325.89 | 1286949.08 | 40°07'07.363"N | 104°45'44.039"W |
| Facility Reference Pt | | | 3203800.98 | 1290898.68 | 40°07'46.600"N | 104°46'16.122"W |
| Field Reference Pt | | | 3197771.84 | 1268891.29 | 40°04'09.600"N | 104°47'36.000"W |

| WELLPATH DATUM | | | |
|--------------------------|--------------------------------|--|--------------------------|
| Calculation method | Minimum curvature | XTREME 20 (16'KB) (RKB) to Facility Vertical Datum | 5062.00ft |
| Horizontal Reference Pt | Slot | XTREME 20 (16'KB) (RKB) to Mean Sea Level | 5062.00ft |
| Vertical Reference Pt | XTREME 20 (16'KB) (RKB) | XTREME 20 (16'KB) (RKB) to Mud Line at Slot (SLOT#65 GOBBLER 35N-27HZ (828'FSL & 2306' FEL, SEC.22)) | 5062.00ft |
| MD Reference Pt | XTREME 20 (16'KB) (RKB) | Section Origin | N 0.00, E 0.00 ft |
| Field Vertical Reference | Mean Sea Level | Section Azimuth | 179.71° |

| REFERENCE WELLPATH IDENTIFICATION | | | |
|-----------------------------------|---------------------------------|----------|--|
| Operator | KERR-MCGEE OIL & GAS ONSHORE LP | Slot | SLOT#65 GOBBLER 35N-27HZ (828'FSL & 2306' FEL, SEC.22) |
| Area | COLORADO | Well | GOBBLER 35N-27HZ |
| Field | WELD COUNTY (KERR MCGEE) | Wellbore | GOBBLER 35N-27HZ AWB |
| Facility | SEC.22-T2N-R66W | | |

| WELLPATH DATA (161 stations) † = interpolated/extrapolated station | | | | | | | | | | |
|--|-----------------|-------------|----------|----------------|------------|-----------|----------------|-----------------|---------------|---------------------------|
| MD [ft] | Inclination [°] | Azimuth [°] | TVD [ft] | Vert Sect [ft] | North [ft] | East [ft] | Latitude | Longitude | DLS [°/100ft] | Comments |
| 0.00† | 0.000 | 228.960 | 0.00 | 0.00 | 0.00 | 0.00 | 40°07'07.363"N | 104°45'44.039"W | 0.00 | |
| 16.00 | 0.000 | 228.960 | 16.00 | 0.00 | 0.00 | 0.00 | 40°07'07.363"N | 104°45'44.039"W | 0.00 | TIE ON |
| 116.00 | 0.280 | 228.960 | 116.00 | 0.16 | -0.16 | -0.18 | 40°07'07.361"N | 104°45'44.041"W | 0.28 | BEGIN GYRO SURVEYS |
| 216.00 | 0.350 | 231.110 | 216.00 | 0.51 | -0.51 | -0.61 | 40°07'07.358"N | 104°45'44.047"W | 0.07 | |
| 316.00 | 0.300 | 205.600 | 316.00 | 0.94 | -0.94 | -0.96 | 40°07'07.354"N | 104°45'44.051"W | 0.15 | |
| 416.00 | 0.230 | 228.620 | 416.00 | 1.30 | -1.31 | -1.22 | 40°07'07.350"N | 104°45'44.055"W | 0.13 | |
| 516.00 | 0.320 | 245.450 | 515.99 | 1.55 | -1.56 | -1.63 | 40°07'07.348"N | 104°45'44.060"W | 0.12 | |
| 616.00 | 0.220 | 263.800 | 615.99 | 1.68 | -1.69 | -2.07 | 40°07'07.346"N | 104°45'44.066"W | 0.13 | |
| 716.00 | 0.270 | 257.840 | 715.99 | 1.75 | -1.77 | -2.49 | 40°07'07.346"N | 104°45'44.071"W | 0.06 | |
| 816.00 | 0.210 | 279.710 | 815.99 | 1.77 | -1.78 | -2.90 | 40°07'07.345"N | 104°45'44.076"W | 0.11 | |
| 916.00 | 0.180 | 314.650 | 915.99 | 1.63 | -1.64 | -3.19 | 40°07'07.347"N | 104°45'44.080"W | 0.12 | |
| 1016.00 | 0.170 | 272.390 | 1015.99 | 1.51 | -1.53 | -3.45 | 40°07'07.348"N | 104°45'44.083"W | 0.13 | |
| 1034.00 | 0.210 | 311.140 | 1033.99 | 1.49 | -1.50 | -3.51 | 40°07'07.348"N | 104°45'44.084"W | 0.73 | TIE ONTO GYRO SURVEYS |
| 1184.00 | 0.360 | 288.370 | 1183.99 | 1.15 | -1.17 | -4.16 | 40°07'07.351"N | 104°45'44.093"W | 0.12 | BEGIN BHI MWD+IFR SURVEYS |
| 1277.00 | 2.420 | 261.940 | 1276.96 | 1.32 | -1.36 | -6.38 | 40°07'07.350"N | 104°45'44.121"W | 2.26 | |
| 1372.00 | 3.990 | 266.690 | 1371.81 | 1.77 | -1.83 | -11.67 | 40°07'07.345"N | 104°45'44.189"W | 1.67 | |
| 1466.00 | 5.550 | 263.180 | 1465.48 | 2.46 | -2.56 | -19.45 | 40°07'07.338"N | 104°45'44.289"W | 1.69 | |
| 1560.00 | 7.200 | 267.100 | 1558.89 | 3.24 | -3.40 | -29.84 | 40°07'07.329"N | 104°45'44.423"W | 1.81 | |
| 1651.00 | 9.390 | 265.270 | 1648.94 | 4.08 | -4.30 | -42.94 | 40°07'07.321"N | 104°45'44.592"W | 2.42 | |
| 1743.00 | 10.930 | 264.510 | 1739.49 | 5.45 | -5.75 | -59.10 | 40°07'07.306"N | 104°45'44.800"W | 1.68 | |
| 1834.00 | 12.490 | 261.350 | 1828.59 | 7.66 | -8.06 | -77.42 | 40°07'07.283"N | 104°45'45.036"W | 1.85 | |
| 1926.00 | 13.490 | 257.920 | 1918.24 | 11.30 | -11.80 | -97.75 | 40°07'07.246"N | 104°45'45.297"W | 1.37 | |
| 2018.00 | 14.340 | 259.220 | 2007.54 | 15.57 | -16.17 | -119.43 | 40°07'07.203"N | 104°45'45.576"W | 0.98 | |
| 2110.00 | 15.300 | 260.940 | 2096.48 | 19.49 | -20.22 | -142.61 | 40°07'07.163"N | 104°45'45.875"W | 1.15 | |
| 2201.00 | 16.350 | 261.840 | 2184.03 | 23.07 | -23.93 | -167.15 | 40°07'07.127"N | 104°45'46.191"W | 1.18 | |
| 2293.00 | 17.740 | 265.090 | 2271.99 | 25.97 | -26.96 | -193.93 | 40°07'07.097"N | 104°45'46.535"W | 1.83 | |
| 2384.00 | 19.640 | 268.370 | 2358.19 | 27.45 | -28.58 | -223.04 | 40°07'07.081"N | 104°45'46.910"W | 2.39 | |
| 2476.00 | 21.160 | 269.080 | 2444.41 | 27.99 | -29.29 | -255.10 | 40°07'07.074"N | 104°45'47.323"W | 1.67 | |
| 2568.00 | 23.150 | 267.210 | 2529.62 | 28.96 | -30.44 | -289.77 | 40°07'07.062"N | 104°45'47.769"W | 2.29 | |
| 2660.00 | 23.320 | 266.660 | 2614.16 | 30.72 | -32.38 | -326.01 | 40°07'07.043"N | 104°45'48.235"W | 0.30 | |
| 2751.00 | 23.510 | 263.160 | 2697.67 | 33.75 | -35.59 | -362.01 | 40°07'07.011"N | 104°45'48.699"W | 1.54 | |
| 2843.00 | 23.800 | 261.000 | 2781.94 | 38.65 | -40.68 | -398.57 | 40°07'06.961"N | 104°45'49.169"W | 0.99 | |
| 2935.00 | 23.930 | 261.680 | 2866.07 | 44.06 | -46.28 | -435.36 | 40°07'06.906"N | 104°45'49.643"W | 0.33 | |
| 3027.00 | 24.640 | 262.460 | 2949.93 | 49.09 | -51.50 | -472.84 | 40°07'06.854"N | 104°45'50.125"W | 0.85 | |
| 3119.00 | 25.840 | 261.590 | 3033.15 | 54.34 | -56.95 | -511.69 | 40°07'06.800"N | 104°45'50.625"W | 1.37 | |
| 3210.00 | 24.810 | 261.400 | 3115.40 | 59.90 | -62.71 | -550.18 | 40°07'06.743"N | 104°45'51.121"W | 1.14 | |
| 3302.00 | 24.090 | 262.860 | 3199.15 | 64.93 | -67.93 | -587.90 | 40°07'06.692"N | 104°45'51.606"W | 1.02 | |
| 3394.00 | 24.450 | 263.020 | 3283.02 | 69.38 | -72.57 | -625.43 | 40°07'06.646"N | 104°45'52.089"W | 0.40 | |
| 3486.00 | 23.310 | 263.760 | 3367.14 | 73.49 | -76.87 | -662.42 | 40°07'06.603"N | 104°45'52.566"W | 1.28 | |
| 3577.00 | 23.810 | 264.020 | 3450.56 | 77.17 | -80.74 | -698.59 | 40°07'06.565"N | 104°45'53.031"W | 0.56 | |
| 3669.00 | 22.780 | 261.680 | 3535.06 | 81.50 | -85.25 | -734.68 | 40°07'06.520"N | 104°45'53.496"W | 1.50 | |
| 3760.00 | 20.160 | 265.150 | 3619.74 | 85.21 | -89.12 | -767.75 | 40°07'06.482"N | 104°45'53.921"W | 3.20 | |
| 3846.00 | 20.540 | 264.810 | 3700.37 | 87.68 | -91.74 | -797.54 | 40°07'06.456"N | 104°45'54.305"W | 0.46 | |
| 3931.00 | 22.810 | 264.640 | 3779.36 | 90.41 | -94.63 | -828.80 | 40°07'06.428"N | 104°45'54.707"W | 2.67 | |
| 4016.00 | 24.190 | 263.230 | 3857.31 | 93.83 | -98.22 | -862.50 | 40°07'06.392"N | 104°45'55.141"W | 1.75 | |

| REFERENCE WELLPATH IDENTIFICATION | | | | |
|-----------------------------------|---------------------------------|--|----------|--|
| Operator | KERR-MCGEE OIL & GAS ONSHORE LP | | Slot | SLOT#65 GOBBLER 35N-27HZ (828'FSL & 2306' FEL, SEC.22) |
| Area | COLORADO | | Well | GOBBLER 35N-27HZ |
| Field | WELD COUNTY (KERR MCGEE) | | Wellbore | GOBBLER 35N-27HZ AWB |
| Facility | SEC.22-T2N-R66W | | | |

WELLPATH DATA (161 stations)

| MD [ft] | Inclination [°] | Azimuth [°] | TVD [ft] | Vert Sect [ft] | North [ft] | East [ft] | Latitude | Longitude | DLS [°/100ft] | Comments |
|---------|-----------------|-------------|----------|----------------|------------|-----------|----------------|-----------------|---------------|----------|
| 4101.00 | 24.220 | 263.020 | 3934.83 | 97.82 | -102.39 | -897.10 | 40°07'06.351"N | 104°45'55.586"W | 0.11 | |
| 4186.00 | 23.820 | 262.050 | 4012.47 | 102.14 | -106.89 | -931.40 | 40°07'06.307"N | 104°45'56.028"W | 0.66 | |
| 4272.00 | 23.950 | 261.480 | 4091.11 | 106.95 | -111.87 | -965.87 | 40°07'06.257"N | 104°45'56.472"W | 0.31 | |
| 4356.00 | 23.990 | 262.910 | 4167.86 | 111.41 | -116.51 | -999.67 | 40°07'06.211"N | 104°45'56.907"W | 0.69 | |
| 4442.00 | 24.190 | 261.100 | 4246.37 | 116.12 | -121.39 | -1034.43 | 40°07'06.163"N | 104°45'57.354"W | 0.89 | |
| 4527.00 | 24.260 | 260.970 | 4323.89 | 121.38 | -126.83 | -1068.88 | 40°07'06.109"N | 104°45'57.798"W | 0.10 | |
| 4612.00 | 23.530 | 258.820 | 4401.60 | 127.24 | -132.86 | -1102.77 | 40°07'06.050"N | 104°45'58.234"W | 1.34 | |
| 4697.00 | 22.700 | 258.970 | 4479.78 | 133.50 | -139.29 | -1135.52 | 40°07'05.986"N | 104°45'58.655"W | 0.98 | |
| 4782.00 | 22.140 | 260.020 | 4558.36 | 139.25 | -145.20 | -1167.39 | 40°07'05.928"N | 104°45'59.066"W | 0.81 | |
| 4867.00 | 23.150 | 262.190 | 4636.80 | 144.13 | -150.25 | -1199.72 | 40°07'05.878"N | 104°45'59.482"W | 1.54 | |
| 4951.00 | 23.710 | 263.750 | 4713.88 | 148.04 | -154.33 | -1232.87 | 40°07'05.838"N | 104°45'59.908"W | 0.99 | |
| 5037.00 | 23.200 | 263.830 | 4792.77 | 151.57 | -158.03 | -1266.90 | 40°07'05.801"N | 104°46'00.346"W | 0.59 | |
| 5122.00 | 24.470 | 263.020 | 4870.52 | 155.34 | -161.97 | -1301.02 | 40°07'05.762"N | 104°46'00.786"W | 1.54 | |
| 5207.00 | 23.670 | 262.440 | 4948.13 | 159.55 | -166.35 | -1335.41 | 40°07'05.719"N | 104°46'01.228"W | 0.98 | |
| 5292.00 | 23.620 | 262.230 | 5025.99 | 163.92 | -170.90 | -1369.19 | 40°07'05.674"N | 104°46'01.663"W | 0.12 | |
| 5377.00 | 23.560 | 263.700 | 5103.89 | 167.92 | -175.07 | -1402.95 | 40°07'05.633"N | 104°46'02.098"W | 0.70 | |
| 5462.00 | 22.000 | 262.380 | 5182.26 | 171.73 | -179.04 | -1435.62 | 40°07'05.593"N | 104°46'02.518"W | 1.93 | |
| 5547.00 | 21.530 | 265.360 | 5261.20 | 174.94 | -182.42 | -1466.94 | 40°07'05.560"N | 104°46'02.921"W | 1.41 | |
| 5632.00 | 21.260 | 264.640 | 5340.34 | 177.48 | -185.12 | -1497.83 | 40°07'05.533"N | 104°46'03.319"W | 0.44 | |
| 5718.00 | 19.390 | 266.220 | 5420.99 | 179.73 | -187.52 | -1527.60 | 40°07'05.509"N | 104°46'03.702"W | 2.27 | |
| 5803.00 | 17.510 | 266.340 | 5501.61 | 181.34 | -189.26 | -1554.45 | 40°07'05.492"N | 104°46'04.048"W | 2.21 | |
| 5888.00 | 16.130 | 265.300 | 5582.98 | 183.00 | -191.05 | -1578.98 | 40°07'05.475"N | 104°46'04.363"W | 1.66 | |
| 5973.00 | 15.210 | 265.420 | 5664.82 | 184.74 | -192.90 | -1601.86 | 40°07'05.456"N | 104°46'04.658"W | 1.08 | |
| 6058.00 | 13.980 | 265.090 | 5747.07 | 186.40 | -194.67 | -1623.20 | 40°07'05.439"N | 104°46'04.933"W | 1.45 | |
| 6143.00 | 12.110 | 265.100 | 5829.87 | 187.94 | -196.31 | -1642.32 | 40°07'05.422"N | 104°46'05.179"W | 2.20 | |
| 6228.00 | 10.470 | 265.350 | 5913.23 | 189.24 | -197.70 | -1658.90 | 40°07'05.409"N | 104°46'05.392"W | 1.93 | |
| 6314.00 | 8.700 | 264.800 | 5998.02 | 190.40 | -198.92 | -1673.17 | 40°07'05.397"N | 104°46'05.576"W | 2.06 | |
| 6399.00 | 8.110 | 262.300 | 6082.11 | 191.72 | -200.31 | -1685.51 | 40°07'05.383"N | 104°46'05.735"W | 0.82 | |
| 6484.00 | 6.810 | 259.440 | 6166.39 | 193.39 | -202.04 | -1696.41 | 40°07'05.366"N | 104°46'05.875"W | 1.59 | |
| 6569.00 | 5.100 | 256.290 | 6250.93 | 195.16 | -203.86 | -1705.03 | 40°07'05.348"N | 104°46'05.986"W | 2.05 | |
| 6654.00 | 3.690 | 261.110 | 6335.67 | 196.45 | -205.18 | -1711.41 | 40°07'05.335"N | 104°46'06.068"W | 1.71 | |
| 6739.00 | 3.300 | 261.000 | 6420.52 | 197.23 | -205.98 | -1716.53 | 40°07'05.327"N | 104°46'06.134"W | 0.46 | |
| 6825.00 | 2.750 | 262.630 | 6506.40 | 197.86 | -206.63 | -1721.02 | 40°07'05.320"N | 104°46'06.192"W | 0.65 | |
| 6910.00 | 1.130 | 257.990 | 6591.34 | 198.28 | -207.07 | -1723.86 | 40°07'05.316"N | 104°46'06.228"W | 1.91 | |
| 6995.00 | 1.020 | 123.240 | 6676.34 | 198.87 | -207.66 | -1724.05 | 40°07'05.310"N | 104°46'06.231"W | 2.34 | |
| 7038.00 | 1.380 | 148.250 | 6719.33 | 199.52 | -208.31 | -1723.45 | 40°07'05.304"N | 104°46'06.223"W | 1.46 | |
| 7081.00 | 3.880 | 170.380 | 6762.28 | 201.40 | -210.18 | -1722.94 | 40°07'05.285"N | 104°46'06.216"W | 6.17 | |
| 7124.00 | 8.780 | 176.400 | 6805.01 | 206.11 | -214.90 | -1722.49 | 40°07'05.239"N | 104°46'06.211"W | 11.48 | |
| 7166.00 | 12.450 | 176.770 | 6846.28 | 213.84 | -222.62 | -1722.03 | 40°07'05.162"N | 104°46'06.205"W | 8.74 | |
| 7209.00 | 15.270 | 178.350 | 6888.02 | 224.13 | -232.91 | -1721.61 | 40°07'05.061"N | 104°46'06.199"W | 6.62 | |
| 7251.00 | 18.430 | 179.620 | 6928.22 | 236.30 | -245.08 | -1721.40 | 40°07'04.941"N | 104°46'06.197"W | 7.57 | |
| 7294.00 | 22.860 | 181.760 | 6968.45 | 251.45 | -260.23 | -1721.62 | 40°07'04.791"N | 104°46'06.199"W | 10.45 | |
| 7336.00 | 26.680 | 182.160 | 7006.57 | 269.03 | -277.81 | -1722.22 | 40°07'04.617"N | 104°46'06.207"W | 9.10 | |
| 7379.00 | 32.110 | 181.920 | 7044.02 | 290.11 | -298.90 | -1722.97 | 40°07'04.409"N | 104°46'06.217"W | 12.63 | |
| 7421.00 | 36.900 | 180.960 | 7078.63 | 313.89 | -322.68 | -1723.55 | 40°07'04.174"N | 104°46'06.224"W | 11.48 | |

| REFERENCE WELLPATH IDENTIFICATION | | | |
|-----------------------------------|---------------------------------|----------|--|
| Operator | KERR-MCGEE OIL & GAS ONSHORE LP | Slot | SLOT#65 GOBBLER 35N-27HZ (828'FSL & 2306' FEL, SEC.22) |
| Area | COLORADO | Well | GOBBLER 35N-27HZ |
| Field | WELD COUNTY (KERR MCGEE) | Wellbore | GOBBLER 35N-27HZ AWP |
| Facility | SEC.22-T2N-R66W | | |

| WELLPATH DATA (161 stations) † = interpolated/extrapolated station | | | | | | | | | | |
|--|-----------------|-------------|----------|----------------|------------|-----------|----------------|-----------------|---------------|-----------------|
| MD [ft] | Inclination [°] | Azimuth [°] | TVD [ft] | Vert Sect [ft] | North [ft] | East [ft] | Latitude | Longitude | DLS [°/100ft] | Comments |
| 7464.00 | 41.210 | 181.040 | 7112.01 | 340.97 | -349.76 | -1724.03 | 40°07'03.906"N | 104°46'06.230"W | 10.02 | |
| 7506.00 | 45.580 | 180.270 | 7142.52 | 369.81 | -378.60 | -1724.35 | 40°07'03.621"N | 104°46'06.234"W | 10.48 | |
| 7549.00 | 51.030 | 179.960 | 7171.11 | 401.91 | -410.70 | -1724.41 | 40°07'03.304"N | 104°46'06.235"W | 12.69 | |
| 7591.00 | 55.770 | 179.110 | 7196.15 | 435.61 | -444.41 | -1724.13 | 40°07'02.971"N | 104°46'06.232"W | 11.40 | |
| 7634.00 | 58.210 | 179.170 | 7219.57 | 471.67 | -480.46 | -1723.59 | 40°07'02.614"N | 104°46'06.225"W | 5.68 | |
| 7677.00 | 62.220 | 179.980 | 7240.93 | 508.98 | -517.77 | -1723.32 | 40°07'02.246"N | 104°46'06.221"W | 9.47 | |
| 7720.00 | 64.320 | 180.510 | 7260.27 | 547.38 | -556.17 | -1723.48 | 40°07'01.866"N | 104°46'06.223"W | 5.01 | |
| 7762.00 | 68.820 | 180.250 | 7276.96 | 585.90 | -594.70 | -1723.74 | 40°07'01.486"N | 104°46'06.226"W | 10.73 | |
| 7805.00 | 72.870 | 181.500 | 7291.07 | 626.51 | -635.30 | -1724.36 | 40°07'01.084"N | 104°46'06.234"W | 9.81 | |
| 7847.00 | 77.690 | 181.320 | 7301.74 | 667.10 | -675.90 | -1725.36 | 40°07'00.683"N | 104°46'06.247"W | 11.48 | |
| 7890.00 | 81.370 | 182.350 | 7309.55 | 709.34 | -718.15 | -1726.72 | 40°07'00.266"N | 104°46'06.265"W | 8.88 | |
| 7918.00 | 83.890 | 181.950 | 7313.14 | 737.09 | -745.90 | -1727.76 | 40°06'59.991"N | 104°46'06.278"W | 9.11 | |
| 7957.00† | 87.360 | 181.514 | 7316.12 | 775.94 | -784.76 | -1728.93 | 40°06'59.607"N | 104°46'06.293"W | 8.97 | 7" CASING POINT |
| 7987.00 | 90.030 | 181.180 | 7316.80 | 805.92 | -814.74 | -1729.64 | 40°06'59.311"N | 104°46'06.302"W | 8.97 | |
| 8072.00 | 90.120 | 181.090 | 7316.69 | 890.89 | -899.73 | -1731.32 | 40°06'58.471"N | 104°46'06.324"W | 0.15 | |
| 8157.00 | 90.400 | 180.090 | 7316.30 | 975.88 | -984.72 | -1732.20 | 40°06'57.631"N | 104°46'06.335"W | 1.22 | |
| 8242.00 | 91.100 | 180.810 | 7315.19 | 1060.87 | -1069.71 | -1732.86 | 40°06'56.791"N | 104°46'06.343"W | 1.18 | |
| 8327.00 | 91.070 | 180.620 | 7313.58 | 1145.84 | -1154.69 | -1733.93 | 40°06'55.952"N | 104°46'06.357"W | 0.23 | |
| 8412.00 | 90.500 | 178.220 | 7312.42 | 1230.82 | -1239.67 | -1733.06 | 40°06'55.112"N | 104°46'06.346"W | 2.90 | |
| 8497.00 | 90.860 | 178.890 | 7311.41 | 1315.80 | -1324.64 | -1730.92 | 40°06'54.272"N | 104°46'06.318"W | 0.89 | |
| 8583.00 | 91.390 | 177.940 | 7309.72 | 1401.76 | -1410.59 | -1728.54 | 40°06'53.423"N | 104°46'06.287"W | 1.26 | |
| 8668.00 | 91.880 | 178.730 | 7307.29 | 1486.70 | -1495.51 | -1726.07 | 40°06'52.584"N | 104°46'06.256"W | 1.09 | |
| 8753.00 | 90.890 | 178.200 | 7305.24 | 1571.65 | -1580.46 | -1723.80 | 40°06'51.744"N | 104°46'06.226"W | 1.32 | |
| 8838.00 | 89.440 | 177.910 | 7304.99 | 1656.61 | -1665.41 | -1720.91 | 40°06'50.905"N | 104°46'06.189"W | 1.74 | |
| 8923.00 | 89.810 | 178.340 | 7305.55 | 1741.58 | -1750.36 | -1718.13 | 40°06'50.065"N | 104°46'06.153"W | 0.67 | |
| 9009.00 | 90.030 | 178.410 | 7305.67 | 1827.56 | -1836.32 | -1715.69 | 40°06'49.216"N | 104°46'06.122"W | 0.27 | |
| 9094.00 | 90.210 | 178.680 | 7305.49 | 1912.54 | -1921.30 | -1713.54 | 40°06'48.376"N | 104°46'06.094"W | 0.38 | |
| 9179.00 | 90.490 | 177.980 | 7304.97 | 1997.51 | -2006.26 | -1711.06 | 40°06'47.536"N | 104°46'06.062"W | 0.89 | |
| 9264.00 | 89.160 | 179.150 | 7305.23 | 2082.49 | -2091.23 | -1708.93 | 40°06'46.697"N | 104°46'06.034"W | 2.08 | |
| 9349.00 | 89.100 | 179.280 | 7306.52 | 2167.48 | -2176.21 | -1707.77 | 40°06'45.857"N | 104°46'06.019"W | 0.17 | |
| 9434.00 | 89.560 | 179.800 | 7307.52 | 2252.47 | -2261.20 | -1707.08 | 40°06'45.017"N | 104°46'06.010"W | 0.82 | |
| 9519.00 | 90.060 | 179.630 | 7307.80 | 2337.47 | -2346.20 | -1706.66 | 40°06'44.177"N | 104°46'06.005"W | 0.62 | |
| 9604.00 | 90.120 | 179.100 | 7307.67 | 2422.47 | -2431.19 | -1705.72 | 40°06'43.337"N | 104°46'05.993"W | 0.63 | |
| 9690.00 | 90.580 | 179.130 | 7307.14 | 2508.46 | -2517.18 | -1704.39 | 40°06'42.487"N | 104°46'05.976"W | 0.54 | |
| 9775.00 | 90.950 | 178.980 | 7306.01 | 2593.45 | -2602.16 | -1702.99 | 40°06'41.648"N | 104°46'05.957"W | 0.47 | |
| 9860.00 | 89.750 | 180.010 | 7305.49 | 2678.44 | -2687.15 | -1702.24 | 40°06'40.808"N | 104°46'05.948"W | 1.86 | |
| 9945.00 | 90.000 | 180.160 | 7305.67 | 2763.44 | -2772.15 | -1702.36 | 40°06'39.968"N | 104°46'05.949"W | 0.34 | |
| 10030.00 | 90.120 | 179.480 | 7305.58 | 2848.44 | -2857.15 | -1702.10 | 40°06'39.128"N | 104°46'05.946"W | 0.81 | |
| 10115.00 | 90.300 | 179.820 | 7305.27 | 2933.44 | -2942.15 | -1701.58 | 40°06'38.288"N | 104°46'05.939"W | 0.45 | |
| 10201.00 | 90.950 | 179.480 | 7304.33 | 3019.43 | -3028.14 | -1701.05 | 40°06'37.438"N | 104°46'05.932"W | 0.85 | |
| 10286.00 | 90.640 | 179.730 | 7303.15 | 3104.43 | -3113.13 | -1700.47 | 40°06'36.598"N | 104°46'05.925"W | 0.47 | |
| 10371.00 | 90.890 | 179.720 | 7302.02 | 3189.42 | -3198.12 | -1700.06 | 40°06'35.758"N | 104°46'05.919"W | 0.29 | |
| 10456.00 | 91.040 | 179.590 | 7300.59 | 3274.41 | -3283.11 | -1699.55 | 40°06'34.918"N | 104°46'05.913"W | 0.23 | |
| 10541.00 | 91.470 | 179.370 | 7298.73 | 3359.38 | -3368.09 | -1698.78 | 40°06'34.079"N | 104°46'05.903"W | 0.57 | |
| 10626.00 | 89.780 | 180.080 | 7297.80 | 3444.38 | -3453.08 | -1698.37 | 40°06'33.239"N | 104°46'05.897"W | 2.16 | |

| REFERENCE WELLPATH IDENTIFICATION | | | |
|-----------------------------------|---------------------------------|----------|--|
| Operator | KERR-MCGEE OIL & GAS ONSHORE LP | Slot | SLOT#65 GOBBLER 35N-27HZ (828'FSL & 2306' FEL, SEC.22) |
| Area | COLORADO | Well | GOBBLER 35N-27HZ |
| Field | WELD COUNTY (KERR MCGEE) | Wellbore | GOBBLER 35N-27HZ AWB |
| Facility | SEC.22-T2N-R66W | | |

| WELLPATH DATA (161 stations) | | | | | | | | | | |
|------------------------------|-----------------|-------------|----------|----------------|------------|-----------|----------------|-----------------|---------------|-------------------------|
| MD [ft] | Inclination [°] | Azimuth [°] | TVD [ft] | Vert Sect [ft] | North [ft] | East [ft] | Latitude | Longitude | DLS [°/100ft] | Comments |
| 10711.00 | 89.560 | 180.340 | 7298.29 | 3529.37 | -3538.07 | -1698.68 | 40°06'32.399"N | 104°46'05.901"W | 0.40 | |
| 10796.00 | 90.460 | 181.080 | 7298.27 | 3614.36 | -3623.07 | -1699.73 | 40°06'31.559"N | 104°46'05.915"W | 1.37 | |
| 10881.00 | 90.210 | 181.090 | 7297.78 | 3699.33 | -3708.05 | -1701.34 | 40°06'30.719"N | 104°46'05.935"W | 0.29 | |
| 10966.00 | 90.060 | 181.500 | 7297.58 | 3784.30 | -3793.03 | -1703.26 | 40°06'29.879"N | 104°46'05.960"W | 0.51 | |
| 11051.00 | 90.210 | 181.820 | 7297.38 | 3869.25 | -3877.99 | -1705.73 | 40°06'29.040"N | 104°46'05.992"W | 0.42 | |
| 11137.00 | 90.610 | 181.850 | 7296.76 | 3955.19 | -3963.94 | -1708.48 | 40°06'28.190"N | 104°46'06.027"W | 0.47 | |
| 11222.00 | 91.190 | 180.750 | 7295.43 | 4040.14 | -4048.91 | -1710.41 | 40°06'27.351"N | 104°46'06.052"W | 1.46 | |
| 11307.00 | 90.400 | 179.900 | 7294.25 | 4125.13 | -4133.90 | -1710.89 | 40°06'26.511"N | 104°46'06.058"W | 1.37 | |
| 11393.00 | 88.110 | 178.960 | 7295.36 | 4211.11 | -4219.88 | -1710.04 | 40°06'25.661"N | 104°46'06.047"W | 2.88 | |
| 11478.00 | 88.230 | 178.940 | 7298.08 | 4296.06 | -4304.82 | -1708.48 | 40°06'24.822"N | 104°46'06.027"W | 0.14 | |
| 11564.00 | 88.100 | 178.530 | 7300.83 | 4382.00 | -4390.76 | -1706.58 | 40°06'23.972"N | 104°46'06.002"W | 0.50 | |
| 11649.00 | 88.050 | 179.440 | 7303.69 | 4466.95 | -4475.70 | -1705.08 | 40°06'23.133"N | 104°46'05.983"W | 1.07 | |
| 11734.00 | 89.250 | 180.000 | 7305.69 | 4551.92 | -4560.67 | -1704.66 | 40°06'22.293"N | 104°46'05.977"W | 1.56 | |
| 11819.00 | 90.000 | 180.380 | 7306.25 | 4636.92 | -4645.67 | -1704.94 | 40°06'21.453"N | 104°46'05.981"W | 0.99 | |
| 11904.00 | 90.120 | 180.310 | 7306.16 | 4721.91 | -4730.66 | -1705.45 | 40°06'20.613"N | 104°46'05.987"W | 0.16 | |
| 11989.00 | 90.030 | 181.070 | 7306.05 | 4806.90 | -4815.66 | -1706.48 | 40°06'19.773"N | 104°46'06.000"W | 0.90 | |
| 12074.00 | 89.900 | 180.910 | 7306.10 | 4891.88 | -4900.65 | -1707.95 | 40°06'18.934"N | 104°46'06.019"W | 0.24 | |
| 12159.00 | 90.770 | 180.290 | 7305.60 | 4976.86 | -4985.64 | -1708.84 | 40°06'18.094"N | 104°46'06.031"W | 1.26 | |
| 12245.00 | 91.600 | 180.530 | 7303.82 | 5062.84 | -5071.62 | -1709.45 | 40°06'17.244"N | 104°46'06.038"W | 1.00 | |
| 12330.00 | 89.780 | 180.120 | 7302.80 | 5147.82 | -5156.61 | -1709.93 | 40°06'16.404"N | 104°46'06.045"W | 2.19 | |
| 12415.00 | 89.660 | 180.120 | 7303.21 | 5232.82 | -5241.60 | -1710.11 | 40°06'15.564"N | 104°46'06.047"W | 0.14 | |
| 12500.00 | 89.720 | 180.460 | 7303.67 | 5317.81 | -5326.60 | -1710.54 | 40°06'14.724"N | 104°46'06.052"W | 0.41 | |
| 12585.00 | 90.300 | 180.390 | 7303.66 | 5402.81 | -5411.60 | -1711.17 | 40°06'13.884"N | 104°46'06.060"W | 0.69 | |
| 12670.00 | 90.860 | 181.720 | 7302.80 | 5487.78 | -5496.58 | -1712.74 | 40°06'13.045"N | 104°46'06.080"W | 1.70 | |
| 12755.00 | 90.360 | 181.410 | 7301.89 | 5572.73 | -5581.54 | -1715.06 | 40°06'12.205"N | 104°46'06.110"W | 0.69 | LAST BHI MWD+IFR SURVEY |
| 12811.00 | 90.360 | 181.410 | 7301.54 | 5628.70 | -5637.52 | -1716.44 | 40°06'11.652"N | 104°46'06.128"W | 0.00 | PROJECTION TO BIT |

| HOLE & CASING SECTIONS - Ref Wellbore: GOBBLER 35N-27HZ AWB Ref Wellpath: GOBBLER 35N-27HZ AWP | | | | | | | | | | |
|--|---------------|-------------|---------------|----------------|--------------|----------------|----------------|--------------|--------------|--|
| String/Diameter | Start MD [ft] | End MD [ft] | Interval [ft] | Start TVD [ft] | End TVD [ft] | Start N/S [ft] | Start E/W [ft] | End N/S [ft] | End E/W [ft] | |
| 13.5in Open Hole | 16.00 | 1109.00 | 1093.00 | 16.00 | 1108.99 | 0.00 | 0.00 | -1.33 | -3.77 | |
| 9.625in Casing Surface | 16.00 | 1106.00 | 1090.00 | 16.00 | 1105.99 | 0.00 | 0.00 | -1.34 | -3.76 | |
| 8.75in Open Hole | 1109.00 | 7970.00 | 6861.00 | 1108.99 | 7316.58 | -1.33 | -3.77 | -797.75 | -1729.26 | |
| 7in Casing Intermediate | 16.00 | 7957.00 | 7941.00 | 16.00 | 7316.12 | 0.00 | 0.00 | -784.76 | -1728.93 | |
| 6.125in Open Hole | 7970.00 | 12811.00 | 4841.00 | 7316.58 | 7301.54 | -797.75 | -1729.26 | -5637.52 | -1716.44 | |

| REFERENCE WELLPATH IDENTIFICATION | | | |
|-----------------------------------|---------------------------------|----------|--|
| Operator | KERR-MCGEE OIL & GAS ONSHORE LP | Slot | SLOT#65 GOBBLER 35N-27HZ (828'FSL & 2306' FEL, SEC.22) |
| Area | COLORADO | Well | GOBBLER 35N-27HZ |
| Field | WELD COUNTY (KERR MCGEE) | Wellbore | GOBBLER 35N-27HZ AWB |
| Facility | SEC.22-T2N-R66W | | |

| TARGETS | | | | | | | | | |
|---|---------|----------|------------|-----------|-------------------|--------------------|----------------|-----------------|---------|
| Name | MD [ft] | TVD [ft] | North [ft] | East [ft] | Grid East [US ft] | Grid North [US ft] | Latitude | Longitude | Shape |
| GOBBLER 35N-27HZ BHL ON PLAT (460'FSL & 1242'FWL, SEC.27) REV-1 | | 7302.00 | -5662.14 | -1699.42 | 3204673.71 | 1281273.24 | 40°06'11.408"N | 104°46'05.909"W | point |
| GOBBLER 35N-27HZ LANDBOX | | 7302.00 | 0.00 | 0.00 | 3206325.89 | 1286949.08 | 40°07'07.363"N | 104°45'44.039"W | polygon |
| SEC.22-T2N-R66W HARDLINES (460' SETBACK) | | 7497.00 | 3976.36 | 2051.96 | 3208344.62 | 1290942.21 | 40°07'46.657"N | 104°45'17.622"W | polygon |
| SEC.22-T2N-R66W LINES | | 7497.00 | 3976.36 | 2051.96 | 3208344.62 | 1290942.21 | 40°07'46.657"N | 104°45'17.622"W | polygon |
| SEC.27-T2N-R66W HARDLINES (460' SETBACKS) | | 7497.00 | 3970.63 | -2492.07 | 3203800.98 | 1290898.68 | 40°07'46.600"N | 104°46'16.122"W | polygon |
| SEC.27-T2N-R66W SECTION LINES | | 7497.00 | 3970.63 | -2492.07 | 3203800.98 | 1290898.68 | 40°07'46.600"N | 104°46'16.122"W | polygon |

| WELLPATH COMPOSITION - Ref Wellbore: GOBBLER 35N-27HZ AWB Ref Wellpath: GOBBLER 35N-27HZ AWP | | | | |
|--|-------------|--------------------------------------|--|----------------------|
| Start MD [ft] | End MD [ft] | Positional Uncertainty Model | Log Name/Comment | Wellbore |
| 16.00 | 1034.00 | Generic gyro - continuous (Standard) | MS ENERGY GYRO SURVEYS <116-1034> | GOBBLER 35N-27HZ AWB |
| 1034.00 | 7918.00 | NaviTrak (MAGCORR,IFR) | BHI MWD+IFR SURVEYS 8 3/4" HOLE <1034-7918> | GOBBLER 35N-27HZ AWB |
| 7918.00 | 12755.00 | NaviTrak (MAGCORR,IFR) | BHI MWD+IFR SURVEYS 6 1/8" HOLE <7987-10881> | GOBBLER 35N-27HZ AWB |
| 12755.00 | 12811.00 | Blind Drilling (std) | Projection to bit | GOBBLER 35N-27HZ AWB |

REFERENCE WELLPATH IDENTIFICATION

| | | | |
|----------|---------------------------------|----------|--|
| Operator | KERR-MCGEE OIL & GAS ONSHORE LP | Slot | SLOT#65 GOBBLER 35N-27HZ (828'FSL & 2306' FEL, SEC.22) |
| Area | COLORADO | Well | GOBBLER 35N-27HZ |
| Field | WELD COUNTY (KERR MCGEE) | Wellbore | GOBBLER 35N-27HZ AWP |
| Facility | SEC.22-T2N-R66W | | |

WELLPATH COMMENTS

| MD [ft] | Inclination [°] | Azimuth [°] | TVD [ft] | Comment |
|----------|-----------------|-------------|----------|---------------------------|
| 16.00 | 0.000 | 228.960 | 16.00 | TIE ON |
| 116.00 | 0.280 | 228.960 | 116.00 | BEGIN GYRO SURVEYS |
| 1034.00 | 0.210 | 311.140 | 1033.99 | TIE ONTO GYRO SURVEYS |
| 1184.00 | 0.360 | 288.370 | 1183.99 | BEGIN BHI MWD+IFR SURVEYS |
| 7957.00 | 87.360 | 181.514 | 7316.12 | 7" CASING POINT |
| 12755.00 | 90.360 | 181.410 | 7301.89 | LAST BHI MWD+IFR SURVEY |
| 12811.00 | 90.360 | 181.410 | 7301.54 | PROJECTION TO BIT |