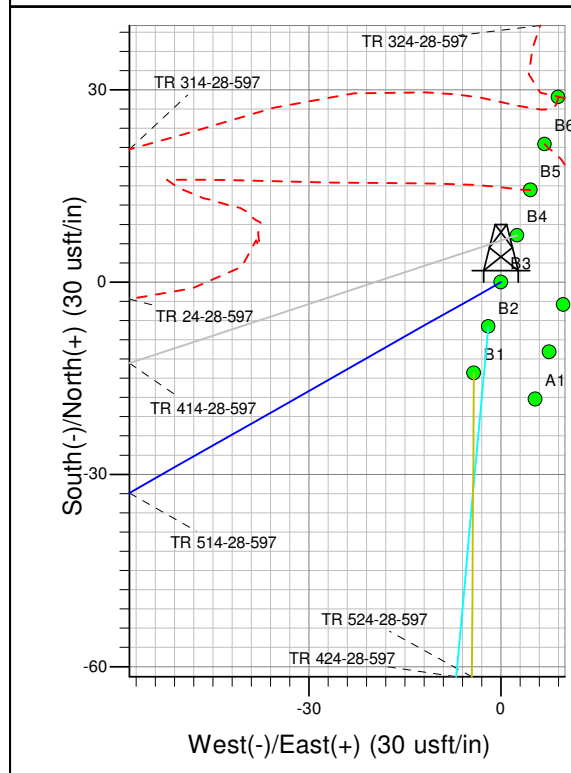
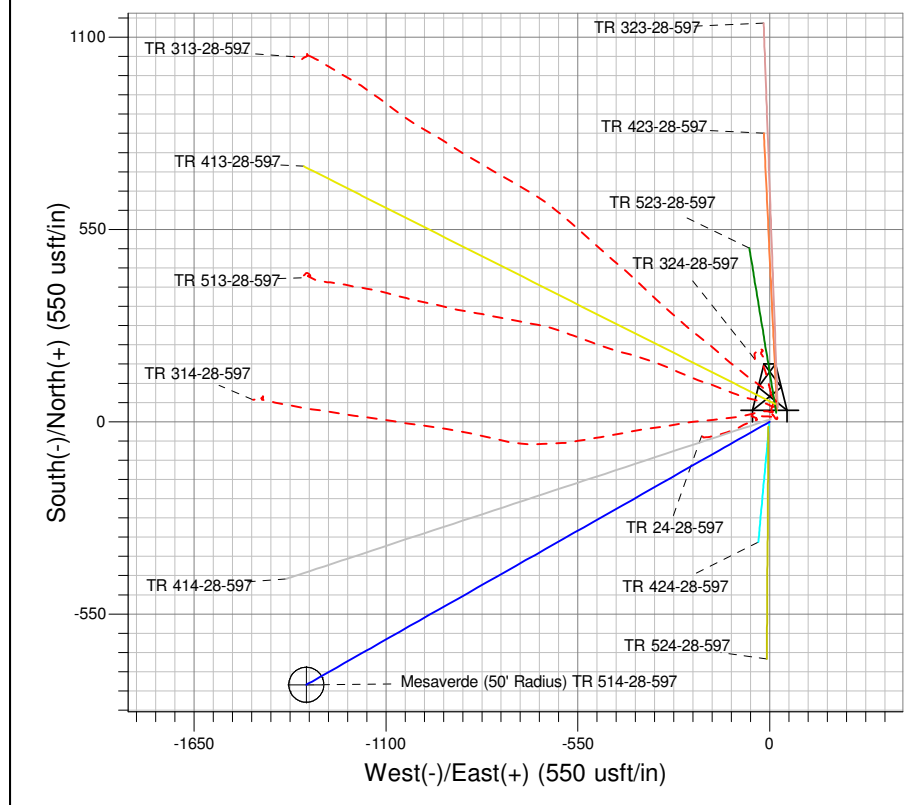
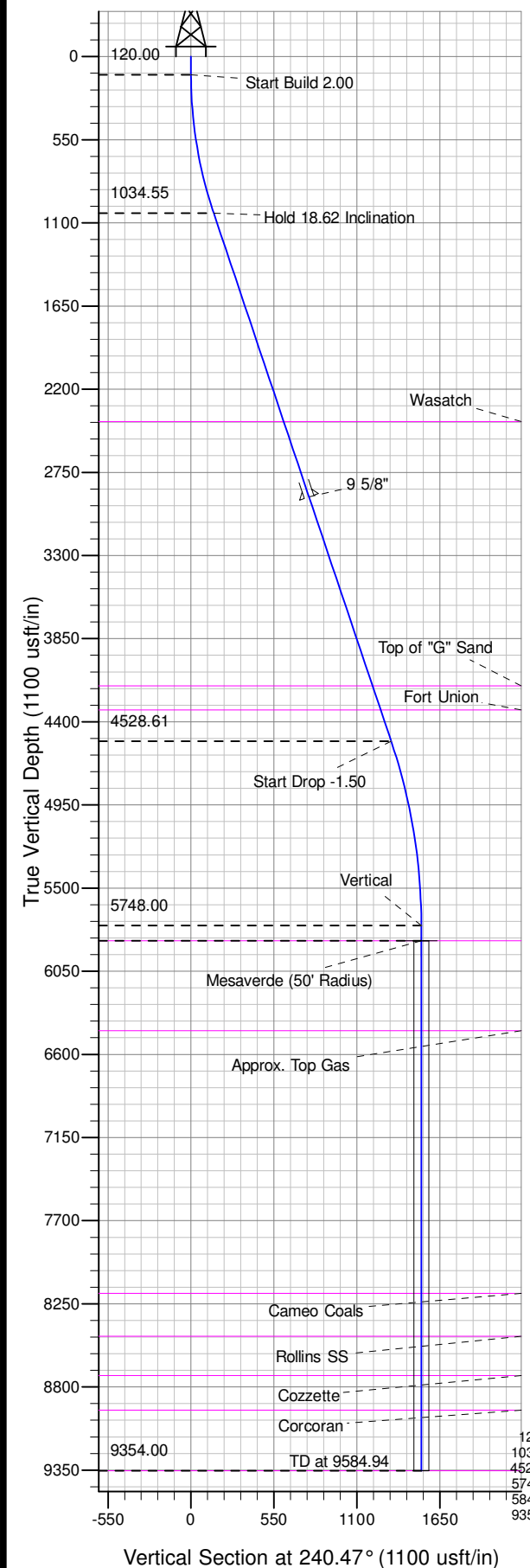




Well Name: TR 514-28-597
Surface Location: TR 24-28-597 Pad
North American Datum 1983 , US State Plane 1983 , Colorado Central Zone
Ground Elevation: 8374.00

+N/-S	+E/-W	Northing	Easting	Latitude	Longitude	Slot
0.00	0.00	1648197.72	2215027.56	39.58005	-108.28538	B3

KELLY BUSHING @ 8400.00usft (Nabors 577 (26' RKB) kjs)



Project: TR 28-05S-097W
Site: TR 24-28-597 Pad
Well: TR 514-28-597
Plan #5 12Aug13 kjs

Azimuths to True North
Magnetic North: 10.88°
Magnetic Field
Strength: 52579.5snT
Dip Angle: 65.85°
Date: 4/14/2008
Model: IGRF200510

ANNOTATIONS									
TVD	MD	Inc	Azi	+N/-S	+E/-W	Vsect	Departure	Annotation	
120.00	120.00	0.00	0.00	0.00	0.00	0.00	0.00	Start Build 2.00	
1034.55	1050.84	18.62	240.47	-73.88	-130.43	149.90	149.90	Hold 18.62 Inclination	
4528.61	4737.82	18.62	240.47	-653.99	-1154.56	1326.92	1326.92	Start Drop -1.50	
5748.00	5978.94	0.00	0.00	-752.50	-1328.47	1526.79	1526.79	Vertical	
5848.00	6078.94	0.00	0.00	-752.50	-1328.47	1526.79	1526.79	Mesaverde	
9354.00	9584.94	0.00	0.00	-752.50	-1328.47	1526.79	1526.79	TD at 9584.94	