



Bill Barrett Corporation

COMPANY DETAILS: BILL BARRETT CORP

Calculation Method: Minimum Curvature
Error System: ISCWSA
Scan Method: Closest Approach 3D
Error Surface: Elliptical Conic
Warning Method: Error Ratio

REFERENCE INFORMATION

Co-ordinate (N/E) Reference: Well Pappenheim 6-62-27-1724BH, True North
Vertical (TVD) Reference: KB @ 4770.0ft (Original Well Elev)
Section (VS) Reference: Slot - (0.0N, 0.0E)
Measured Depth Reference: KB @ 4770.0ft (Original Well Elev)
Calculation Method: Minimum Curvature

WELL DETAILS: Pappenheim 6-62-27-1724BH

+N/-S	+E/-W	Northing	Easting	Latitude	Longitude
0.0	0.0	1413178.37	3329141.03	40° 27' 41.580 N	104° 19' 1.560 W

SECTION DETAILS

Sec	MD	Inc	Azi	TVD	+N/-S	+E/-W	DLeg	TFace	VSec	Target
1	0.0	0.00	0.00	0.0	0.0	0.0	0.00	0.00	0.0	
2	1000.0	0.00	0.00	1000.0	0.0	0.0	0.00	0.00	0.0	
3	1200.0	4.00	204.84	1199.8	-6.3	-2.9	2.00	204.84	-2.6	
4	5499.4	4.00	204.84	5488.7	-278.5	-128.9	0.00	0.00	-116.1	
5	5699.3	0.00	89.05	5688.5	-284.8	-131.8	2.00	180.00	-118.8	
6	5949.3	0.00	89.05	5938.5	-284.8	-131.8	0.00	89.05	-118.8	
7	6701.6	90.27	89.05	6416.0	-276.9	347.8	12.00	89.05	360.0	27-1724BH LP
8	10909.5	90.27	89.05	6396.0	-207.2	4555.1	0.00	0.00	4559.8	27-1724BH PBHL

PROJECT DETAILS: WELD COUNTY, COLORADO

Geodetic System: US State Plane 1983
Datum: North American Datum 1983
Ellipsoid: GRS 1980
Zone: Colorado Northern Zone

FORMATION TOP DETAILS

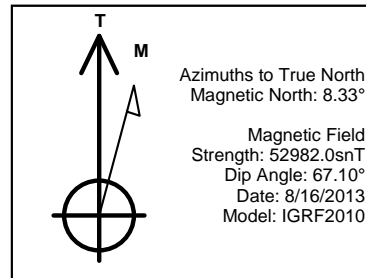
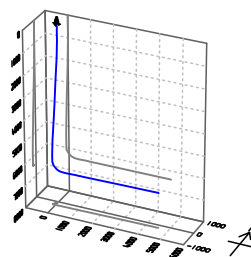
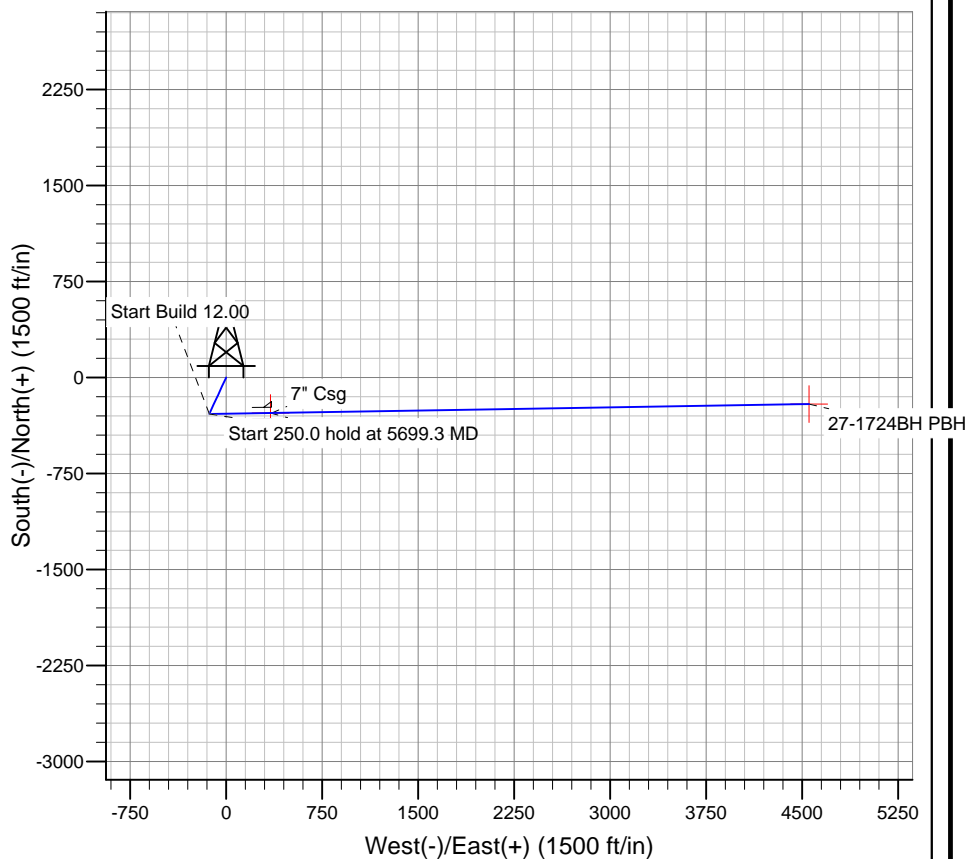
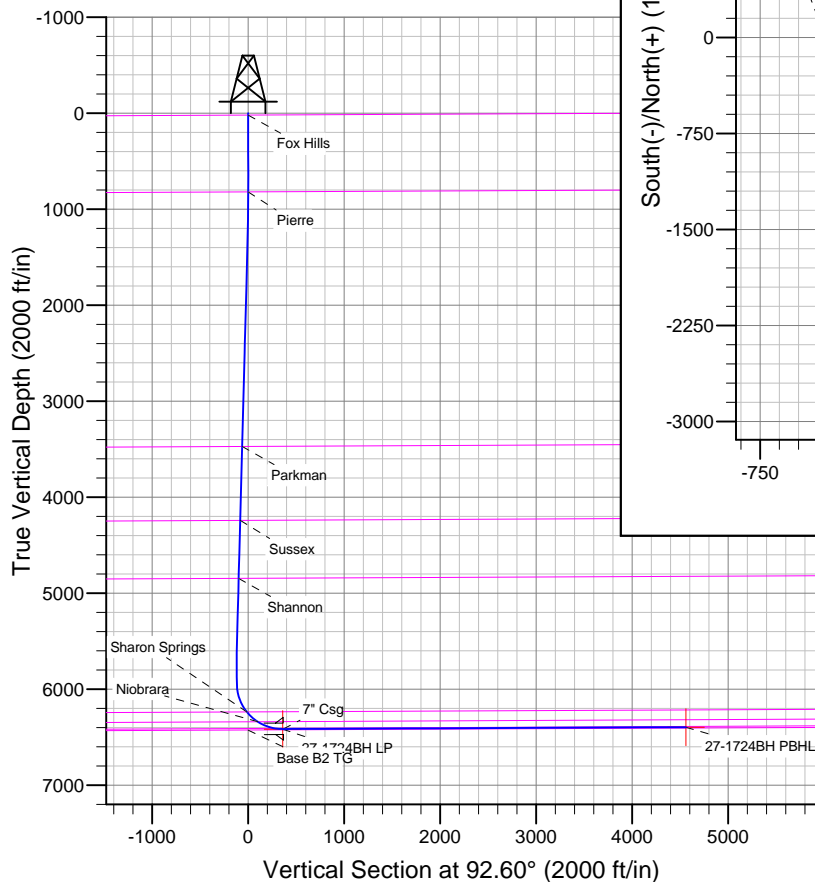
TVDPath	MDPath	Formation
20.0	20.0	Base B2 TG
820.0	820.0	Fox Hills
3473.3	3479.1	Pierre
4242.5	4250.0	Parkman
4847.5	4856.6	Sussex
6238.1	6273.2	Shannon
6339.6	6425.5	Sharon Springs
6409.8	6622.0	Niobrara
		Top B2 TG

WELLBORE TARGET DETAILS

Name	TVD	+N/-S	+E/-W	Shape
27-1724BH PBHL	6396.0	-207.2	4555.1	Point
27-1724BH LP	6416.0	-276.9	347.8	Point

CASING DETAILS

TVD	MD	Name	Size
6416.0	6710.0	7" Csg	7



BILL BARRETT CORP

WELD COUNTY, COLORADO

Pappenheim 6-62-27 NW Pad #2

Pappenheim 6-62-27-1724BH

Wellbore #1

Plan: Design #1

Standard Planning Report

20 December, 2013

Bill Barrett Corp

Planning Report

Database:	Compass	Local Co-ordinate Reference:	Well Pappenheim 6-62-27-1724BH
Company:	BILL BARRETT CORP	TVD Reference:	KB @ 4770.0ft (Original Well Elev)
Project:	WELD COUNTY, COLORADO	MD Reference:	KB @ 4770.0ft (Original Well Elev)
Site:	Pappenheim 6-62-27 NW Pad #2	North Reference:	True
Well:	Pappenheim 6-62-27-1724BH	Survey Calculation Method:	Minimum Curvature
Wellbore:	Wellbore #1		
Design:	Design #1		

Project	WELD COUNTY, COLORADO		
Map System:	US State Plane 1983	System Datum:	Mean Sea Level
Geo Datum:	North American Datum 1983		
Map Zone:	Colorado Northern Zone		

Site		Pappenheim 6-62-27 NW Pad #2			
Site Position:		Northing:	1,413,290.08ft	Latitude:	40° 27' 42.696 N
From:	Lat/Long	Easting:	3,329,047.70ft	Longitude:	104° 19' 2.748 W
Position Uncertainty:	0.0 ft	Slot Radius:	"	Grid Convergence:	0.76 °

Well	Pappenheim 6-62-27-1724BH					
Well Position	+N-S	-112.9 ft	Northing:	1,413,178.37 ft	Latitude:	40° 27' 41.580 N
	+E-W	91.8 ft	Easting:	3,329,141.03 ft	Longitude:	104° 19' 1.560 W
Position Uncertainty		0.0 ft	Wellhead Elevation:	ft	Ground Level:	4,750.0ft

Wellbore	Wellbore #1				
Magnetics	Model Name	Sample Date	Declination (°)	Dip Angle (°)	Field Strength (nT)
	IGRF2010	8/16/2013	8.33	67.10	52,982

Design	Design #1				
Audit Notes:					
Version:	Phase:	PLAN	Tie On Depth:	0.0	
Vertical Section:	Depth From (TVD) (ft)	+N/-S (ft)	+E/-W (ft)	Direction (°)	
	0.0	0.0	0.0	92.60	

Plan Sections										
Measured Depth (ft)	Inclination (°)	Azimuth (°)	Vertical Depth (ft)	+N/-S (ft)	+E/-W (ft)	Dogleg Rate (°/100ft)	Build Rate (°/100ft)	Turn Rate (°/100ft)	TFO (°)	Target
0.0	0.00	0.00	0.0	0.0	0.0	0.00	0.00	0.00	0.00	
1,000.0	0.00	0.00	1,000.0	0.0	0.0	0.00	0.00	0.00	0.00	
1,200.0	4.00	204.84	1,199.8	-6.3	-2.9	2.00	2.00	0.00	204.84	
5,499.4	4.00	204.84	5,488.7	-278.5	-128.9	0.00	0.00	0.00	0.00	
5,699.3	0.00	89.05	5,688.5	-284.8	-131.8	2.00	-2.00	0.00	180.00	
5,949.3	0.00	89.05	5,938.5	-284.8	-131.8	0.00	0.00	0.00	89.05	
6,701.6	90.27	89.05	6,416.0	-276.9	347.8	12.00	12.00	0.00	89.05	27-1724BH LP
10,909.5	90.27	89.05	6,396.0	-207.2	4,555.1	0.00	0.00	0.00	0.00	27-1724BH PBHL

Bill Barrett Corp

Planning Report

Database:	Compass	Local Co-ordinate Reference:	Well Pappenheim 6-62-27-1724BH
Company:	BILL BARRETT CORP	TVD Reference:	KB @ 4770.0ft (Original Well Elev)
Project:	WELD COUNTY, COLORADO	MD Reference:	KB @ 4770.0ft (Original Well Elev)
Site:	Pappenheim 6-62-27 NW Pad #2	North Reference:	True
Well:	Pappenheim 6-62-27-1724BH	Survey Calculation Method:	Minimum Curvature
Wellbore:	Wellbore #1		
Design:	Design #1		

Planned Survey									
Measured Depth (ft)	Inclination (°)	Azimuth (°)	Vertical Depth (ft)	+N/-S (ft)	+E/-W (ft)	Vertical Section (ft)	Dogleg Rate (°/100ft)	Build Rate (°/100ft)	Turn Rate (°/100ft)
0.0	0.00	0.00	0.0	0.0	0.0	0.0	0.00	0.00	0.00
20.0	0.00	0.00	20.0	0.0	0.0	0.0	0.00	0.00	0.00
Fox Hills									
100.0	0.00	0.00	100.0	0.0	0.0	0.0	0.00	0.00	0.00
200.0	0.00	0.00	200.0	0.0	0.0	0.0	0.00	0.00	0.00
300.0	0.00	0.00	300.0	0.0	0.0	0.0	0.00	0.00	0.00
400.0	0.00	0.00	400.0	0.0	0.0	0.0	0.00	0.00	0.00
500.0	0.00	0.00	500.0	0.0	0.0	0.0	0.00	0.00	0.00
600.0	0.00	0.00	600.0	0.0	0.0	0.0	0.00	0.00	0.00
700.0	0.00	0.00	700.0	0.0	0.0	0.0	0.00	0.00	0.00
800.0	0.00	0.00	800.0	0.0	0.0	0.0	0.00	0.00	0.00
820.0	0.00	0.00	820.0	0.0	0.0	0.0	0.00	0.00	0.00
Pierre									
900.0	0.00	0.00	900.0	0.0	0.0	0.0	0.00	0.00	0.00
1,000.0	0.00	0.00	1,000.0	0.0	0.0	0.0	0.00	0.00	0.00
1,100.0	2.00	204.84	1,100.0	-1.6	-0.7	-0.7	2.00	2.00	0.00
1,200.0	4.00	204.84	1,199.8	-6.3	-2.9	-2.6	2.00	2.00	0.00
1,300.0	4.00	204.84	1,299.6	-12.7	-5.9	-5.3	0.00	0.00	0.00
1,400.0	4.00	204.84	1,399.4	-19.0	-8.8	-7.9	0.00	0.00	0.00
1,500.0	4.00	204.84	1,499.1	-25.3	-11.7	-10.6	0.00	0.00	0.00
1,600.0	4.00	204.84	1,598.9	-31.7	-14.7	-13.2	0.00	0.00	0.00
1,700.0	4.00	204.84	1,698.6	-38.0	-17.6	-15.8	0.00	0.00	0.00
1,800.0	4.00	204.84	1,798.4	-44.3	-20.5	-18.5	0.00	0.00	0.00
1,900.0	4.00	204.84	1,898.1	-50.6	-23.4	-21.1	0.00	0.00	0.00
2,000.0	4.00	204.84	1,997.9	-57.0	-26.4	-23.8	0.00	0.00	0.00
2,100.0	4.00	204.84	2,097.6	-63.3	-29.3	-26.4	0.00	0.00	0.00
2,200.0	4.00	204.84	2,197.4	-69.6	-32.2	-29.0	0.00	0.00	0.00
2,300.0	4.00	204.84	2,297.2	-76.0	-35.2	-31.7	0.00	0.00	0.00
2,400.0	4.00	204.84	2,396.9	-82.3	-38.1	-34.3	0.00	0.00	0.00
2,500.0	4.00	204.84	2,496.7	-88.6	-41.0	-37.0	0.00	0.00	0.00
2,600.0	4.00	204.84	2,596.4	-94.9	-44.0	-39.6	0.00	0.00	0.00
2,700.0	4.00	204.84	2,696.2	-101.3	-46.9	-42.2	0.00	0.00	0.00
2,800.0	4.00	204.84	2,795.9	-107.6	-49.8	-44.9	0.00	0.00	0.00
2,900.0	4.00	204.84	2,895.7	-113.9	-52.7	-47.5	0.00	0.00	0.00
3,000.0	4.00	204.84	2,995.5	-120.3	-55.7	-50.2	0.00	0.00	0.00
3,100.0	4.00	204.84	3,095.2	-126.6	-58.6	-52.8	0.00	0.00	0.00
3,200.0	4.00	204.84	3,195.0	-132.9	-61.5	-55.4	0.00	0.00	0.00
3,300.0	4.00	204.84	3,294.7	-139.3	-64.5	-58.1	0.00	0.00	0.00
3,400.0	4.00	204.84	3,394.5	-145.6	-67.4	-60.7	0.00	0.00	0.00
3,479.1	4.00	204.84	3,473.3	-150.6	-69.7	-62.8	0.00	0.00	0.00
Parkman									
3,500.0	4.00	204.84	3,494.2	-151.9	-70.3	-63.4	0.00	0.00	0.00
3,600.0	4.00	204.84	3,594.0	-158.2	-73.3	-66.0	0.00	0.00	0.00
3,700.0	4.00	204.84	3,693.7	-164.6	-76.2	-68.6	0.00	0.00	0.00
3,800.0	4.00	204.84	3,793.5	-170.9	-79.1	-71.3	0.00	0.00	0.00
3,900.0	4.00	204.84	3,893.3	-177.2	-82.0	-73.9	0.00	0.00	0.00
4,000.0	4.00	204.84	3,993.0	-183.6	-85.0	-76.5	0.00	0.00	0.00
4,100.0	4.00	204.84	4,092.8	-189.9	-87.9	-79.2	0.00	0.00	0.00
4,200.0	4.00	204.84	4,192.5	-196.2	-90.8	-81.8	0.00	0.00	0.00
4,250.0	4.00	204.84	4,242.5	-199.4	-92.3	-83.1	0.00	0.00	0.00
Sussex									
4,300.0	4.00	204.84	4,292.3	-202.6	-93.8	-84.5	0.00	0.00	0.00
4,400.0	4.00	204.84	4,392.0	-208.9	-96.7	-87.1	0.00	0.00	0.00
4,500.0	4.00	204.84	4,491.8	-215.2	-99.6	-89.7	0.00	0.00	0.00

Bill Barrett Corp

Planning Report

Database:	Compass	Local Co-ordinate Reference:	Well Pappenheim 6-62-27-1724BH
Company:	BILL BARRETT CORP	TVD Reference:	KB @ 4770.0ft (Original Well Elev)
Project:	WELD COUNTY, COLORADO	MD Reference:	KB @ 4770.0ft (Original Well Elev)
Site:	Pappenheim 6-62-27 NW Pad #2	North Reference:	True
Well:	Pappenheim 6-62-27-1724BH	Survey Calculation Method:	Minimum Curvature
Wellbore:	Wellbore #1		
Design:	Design #1		

Planned Survey									
Measured Depth (ft)	Inclination (°)	Azimuth (°)	Vertical Depth (ft)	+N/-S (ft)	+E/-W (ft)	Vertical Section (ft)	Dogleg Rate (°/100ft)	Build Rate (°/100ft)	Turn Rate (°/100ft)
4,600.0	4.00	204.84	4,591.6	-221.5	-102.6	-92.4	0.00	0.00	0.00
4,700.0	4.00	204.84	4,691.3	-227.9	-105.5	-95.0	0.00	0.00	0.00
4,800.0	4.00	204.84	4,791.1	-234.2	-108.4	-97.7	0.00	0.00	0.00
4,856.6	4.00	204.84	4,847.5	-237.8	-110.1	-99.2	0.00	0.00	0.00
Shannon									
4,900.0	4.00	204.84	4,890.8	-240.5	-111.3	-100.3	0.00	0.00	0.00
5,000.0	4.00	204.84	4,990.6	-246.9	-114.3	-102.9	0.00	0.00	0.00
5,100.0	4.00	204.84	5,090.3	-253.2	-117.2	-105.6	0.00	0.00	0.00
5,200.0	4.00	204.84	5,190.1	-259.5	-120.1	-108.2	0.00	0.00	0.00
5,300.0	4.00	204.84	5,289.9	-265.8	-123.1	-110.9	0.00	0.00	0.00
5,400.0	4.00	204.84	5,389.6	-272.2	-126.0	-113.5	0.00	0.00	0.00
5,499.4	4.00	204.84	5,488.7	-278.5	-128.9	-116.1	0.00	0.00	0.00
5,500.0	3.99	204.84	5,489.4	-278.5	-128.9	-116.1	2.00	-2.00	0.00
5,600.0	1.99	204.84	5,589.2	-283.2	-131.1	-118.1	2.00	-2.00	0.00
5,699.3	0.00	89.05	5,688.5	-284.8	-131.8	-118.8	2.00	-2.00	0.00
5,700.0	0.00	89.05	5,689.2	-284.8	-131.8	-118.8	0.00	0.00	0.00
5,800.0	0.00	89.05	5,789.2	-284.8	-131.8	-118.8	0.00	0.00	0.00
5,900.0	0.00	89.05	5,889.2	-284.8	-131.8	-118.8	0.00	0.00	0.00
5,949.3	0.00	89.05	5,938.5	-284.8	-131.8	-118.8	0.00	0.00	0.00
6,000.0	6.08	89.05	5,989.1	-284.8	-129.2	-116.1	12.00	12.00	0.00
6,100.0	18.08	89.05	6,086.7	-284.4	-108.3	-95.2	12.00	12.00	0.00
6,200.0	30.08	89.05	6,177.8	-283.7	-67.6	-54.6	12.00	12.00	0.00
6,273.2	38.87	89.05	6,238.1	-283.0	-26.2	-13.3	12.00	12.00	0.00
Sharon Springs									
6,300.0	42.08	89.05	6,258.5	-282.8	-8.8	4.1	12.00	12.00	0.00
6,400.0	54.08	89.05	6,325.2	-281.5	65.5	78.2	12.00	12.00	0.00
6,425.5	57.14	89.05	6,339.6	-281.2	86.5	99.2	12.00	12.00	0.00
Niobrara									
6,500.0	66.08	89.05	6,375.0	-280.1	152.0	164.6	12.00	12.00	0.00
6,600.0	78.08	89.05	6,405.7	-278.5	246.9	259.4	12.00	12.00	0.00
6,622.0	80.72	89.05	6,409.8	-278.2	268.6	280.9	12.00	12.00	0.00
Top B2 TG									
6,700.0	90.08	89.05	6,416.0	-276.9	346.2	358.4	12.00	12.00	0.00
6,701.6	90.27	89.05	6,416.0	-276.9	347.8	360.0	12.00	12.00	0.00
27-1724BH LP									
6,710.0	90.27	89.05	6,416.0	-276.7	356.2	368.4	0.00	0.00	0.00
7" Csg									
6,800.0	90.27	89.05	6,415.5	-275.2	446.2	458.3	0.00	0.00	0.00
6,900.0	90.27	89.05	6,415.1	-273.6	546.2	558.1	0.00	0.00	0.00
7,000.0	90.27	89.05	6,414.6	-271.9	646.2	657.9	0.00	0.00	0.00
7,100.0	90.27	89.05	6,414.1	-270.3	746.2	757.7	0.00	0.00	0.00
7,200.0	90.27	89.05	6,413.6	-268.6	846.1	857.5	0.00	0.00	0.00
7,300.0	90.27	89.05	6,413.2	-267.0	946.1	957.3	0.00	0.00	0.00
7,400.0	90.27	89.05	6,412.7	-265.3	1,046.1	1,057.1	0.00	0.00	0.00
7,500.0	90.27	89.05	6,412.2	-263.6	1,146.1	1,156.9	0.00	0.00	0.00
7,600.0	90.27	89.05	6,411.7	-262.0	1,246.1	1,256.7	0.00	0.00	0.00
7,700.0	90.27	89.05	6,411.3	-260.3	1,346.1	1,356.5	0.00	0.00	0.00
7,800.0	90.27	89.05	6,410.8	-258.7	1,446.1	1,456.3	0.00	0.00	0.00
7,900.0	90.27	89.05	6,410.3	-257.0	1,546.0	1,556.1	0.00	0.00	0.00
8,000.0	90.27	89.05	6,409.8	-255.4	1,646.0	1,655.9	0.00	0.00	0.00
8,100.0	90.27	89.05	6,409.4	-253.7	1,746.0	1,755.7	0.00	0.00	0.00
8,200.0	90.27	89.05	6,408.9	-252.1	1,846.0	1,855.5	0.00	0.00	0.00
8,300.0	90.27	89.05	6,408.4	-250.4	1,946.0	1,955.4	0.00	0.00	0.00

Bill Barrett Corp

Planning Report

Database:	Compass	Local Co-ordinate Reference:	Well Pappenheim 6-62-27-1724BH
Company:	BILL BARRETT CORP	TVD Reference:	KB @ 4770.0ft (Original Well Elev)
Project:	WELD COUNTY, COLORADO	MD Reference:	KB @ 4770.0ft (Original Well Elev)
Site:	Pappenheim 6-62-27 NW Pad #2	North Reference:	True
Well:	Pappenheim 6-62-27-1724BH	Survey Calculation Method:	Minimum Curvature
Wellbore:	Wellbore #1		
Design:	Design #1		

Planned Survey

Measured Depth (ft)	Inclination (°)	Azimuth (°)	Vertical Depth (ft)	+N/-S (ft)	+E/-W (ft)	Vertical Section (ft)	Dogleg Rate (°/100ft)	Build Rate (°/100ft)	Turn Rate (°/100ft)
8,400.0	90.27	89.05	6,407.9	-248.8	2,046.0	2,055.2	0.00	0.00	0.00
8,500.0	90.27	89.05	6,407.5	-247.1	2,146.0	2,155.0	0.00	0.00	0.00
8,600.0	90.27	89.05	6,407.0	-245.4	2,245.9	2,254.8	0.00	0.00	0.00
8,700.0	90.27	89.05	6,406.5	-243.8	2,345.9	2,354.6	0.00	0.00	0.00
8,800.0	90.27	89.05	6,406.0	-242.1	2,445.9	2,454.4	0.00	0.00	0.00
8,900.0	90.27	89.05	6,405.6	-240.5	2,545.9	2,554.2	0.00	0.00	0.00
9,000.0	90.27	89.05	6,405.1	-238.8	2,645.9	2,654.0	0.00	0.00	0.00
9,100.0	90.27	89.05	6,404.6	-237.2	2,745.9	2,753.8	0.00	0.00	0.00
9,200.0	90.27	89.05	6,404.1	-235.5	2,845.8	2,853.6	0.00	0.00	0.00
9,300.0	90.27	89.05	6,403.6	-233.9	2,945.8	2,953.4	0.00	0.00	0.00
9,400.0	90.27	89.05	6,403.2	-232.2	3,045.8	3,053.2	0.00	0.00	0.00
9,500.0	90.27	89.05	6,402.7	-230.5	3,145.8	3,153.0	0.00	0.00	0.00
9,600.0	90.27	89.05	6,402.2	-228.9	3,245.8	3,252.8	0.00	0.00	0.00
9,700.0	90.27	89.05	6,401.7	-227.2	3,345.8	3,352.6	0.00	0.00	0.00
9,800.0	90.27	89.05	6,401.3	-225.6	3,445.8	3,452.5	0.00	0.00	0.00
9,900.0	90.27	89.05	6,400.8	-223.9	3,545.7	3,552.3	0.00	0.00	0.00
10,000.0	90.27	89.05	6,400.3	-222.3	3,645.7	3,652.1	0.00	0.00	0.00
10,100.0	90.27	89.05	6,399.8	-220.6	3,745.7	3,751.9	0.00	0.00	0.00
10,200.0	90.27	89.05	6,399.4	-219.0	3,845.7	3,851.7	0.00	0.00	0.00
10,300.0	90.27	89.05	6,398.9	-217.3	3,945.7	3,951.5	0.00	0.00	0.00
10,400.0	90.27	89.05	6,398.4	-215.7	4,045.7	4,051.3	0.00	0.00	0.00
10,500.0	90.27	89.05	6,397.9	-214.0	4,145.7	4,151.1	0.00	0.00	0.00
10,600.0	90.27	89.05	6,397.5	-212.3	4,245.6	4,250.9	0.00	0.00	0.00
10,700.0	90.27	89.05	6,397.0	-210.7	4,345.6	4,350.7	0.00	0.00	0.00
10,800.0	90.27	89.05	6,396.5	-209.0	4,445.6	4,450.5	0.00	0.00	0.00
10,900.0	90.27	89.05	6,396.0	-207.4	4,545.6	4,550.3	0.00	0.00	0.00
10,909.5	90.27	89.05	6,396.0	-207.2	4,555.1	4,559.8	0.00	0.00	0.00
27-1724BH PBHL									

Casing Points

Measured Depth (ft)	Vertical Depth (ft)	Name	Casing Diameter (")	Hole Diameter (")
6,710.0	6,416.0	7" Csg	7	8-3/4

Formations

Measured Depth (ft)	Vertical Depth (ft)	Name	Lithology	Dip (°)	Dip Direction (°)
20.0	20.0	Fox Hills		-0.27	89.05
820.0	820.0	Pierre		-0.27	89.05
3,479.1	3,473.0	Parkman		-0.27	89.05
4,250.0	4,242.0	Sussex		-0.27	89.05
4,856.6	4,847.0	Shannon		-0.27	89.05
6,273.2	6,238.0	Sharon Springs		-0.27	89.05
6,425.5	6,340.0	Niobrara		-0.27	89.05
6,622.0	6,411.0	Top B2 TG		-0.27	89.05
	6,426.0	Base B2 TG		-0.27	89.05

Bill Barrett Corp
Planning Report

Database:	Compass	Local Co-ordinate Reference:	Well Pappenheim 6-62-27-1724BH
Company:	BILL BARRETT CORP	TVD Reference:	KB @ 4770.0ft (Original Well Elev)
Project:	WELD COUNTY, COLORADO	MD Reference:	KB @ 4770.0ft (Original Well Elev)
Site:	Pappenheim 6-62-27 NW Pad #2	North Reference:	True
Well:	Pappenheim 6-62-27-1724BH	Survey Calculation Method:	Minimum Curvature
Wellbore:	Wellbore #1		
Design:	Design #1		