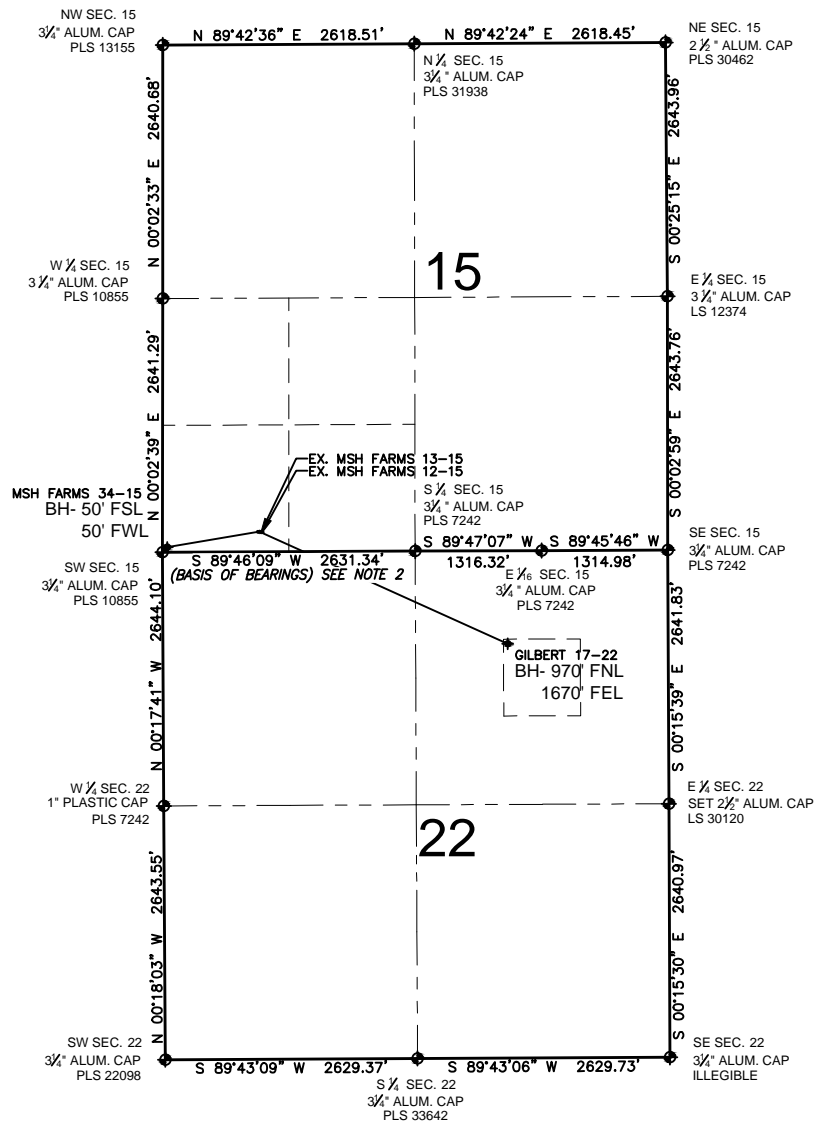


# PAD DRAWING: MSH FARMS 15-P PAD

SECTION 15, TOWNSHIP 7 NORTH, RANGE 67 WEST, 6TH P.M.



## LEGEND

- ⊕ = EXISTING MONUMENT
- ⬤ = PROPOSED WELL
- ⬥ = BOTTOM HOLE
- ⬧ = EXISTING WELL
- BH= BOTTOM HOLE

## NOTES:

- THIS FIELD SURVEY CONFORMS TO THE MINIMUM STANDARDS SET BY THE C.O.G.C.C., RULE NO. 215
- BEARINGS AND DISTANCE SHOWN HEREON ARE GRID AND BASED ON THE COLORADO STATE PLANE COORDINATE SYSTEM, NAD 83/2011 BETWEEN MONUMENTS AS LABELED HEREON AND ELEVATIONS SHOWN ARE NAVD 88, AS DERIVED BY GPS OBSERVATIONS.
- GRID DISTANCES ARE SHOWN, AS MEASURED IN THE FIELD, WITH TIES TO WELLS MEASURED PERPENDICULAR TO SECTION LINES.

## NOTES:

GILBERT 17-22 TO BE AT 207' FSL, 1011' FWL.  
 BOTTOM HOLE AT 970' FNL & 1670' FEL, SEC 22.  
 MSH FARMS 34-15 TO BE AT 208' FSL, 996' FWL.  
 BOTTOM HOLE AT 50' FSL & 50' FWL.  
 EX. MSH FARMS 13-15 IS AT 206' FSL, 1026' FWL.  
 EX. MSH FARMS 12-15 IS AT 205' FSL, 1041' FWL.

PREPARED BY:



BAYSWATER EXPLORATION & PRODUCTION, LLC

FIELD DATE: 11-08-13	PAD NAME: MSH FARMS 15-P PAD
DRAWING DATE: 12-20-13	SURFACE LOCATION: SW 1/4 SW 1/4, SEC. 15, T7N, R67W, 6TH P.M.
BY: KAD	CHECKED: MLP
	WELD COUNTY, COLORADO

