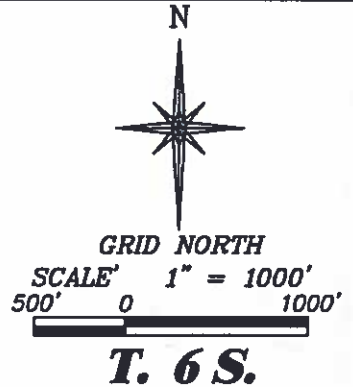
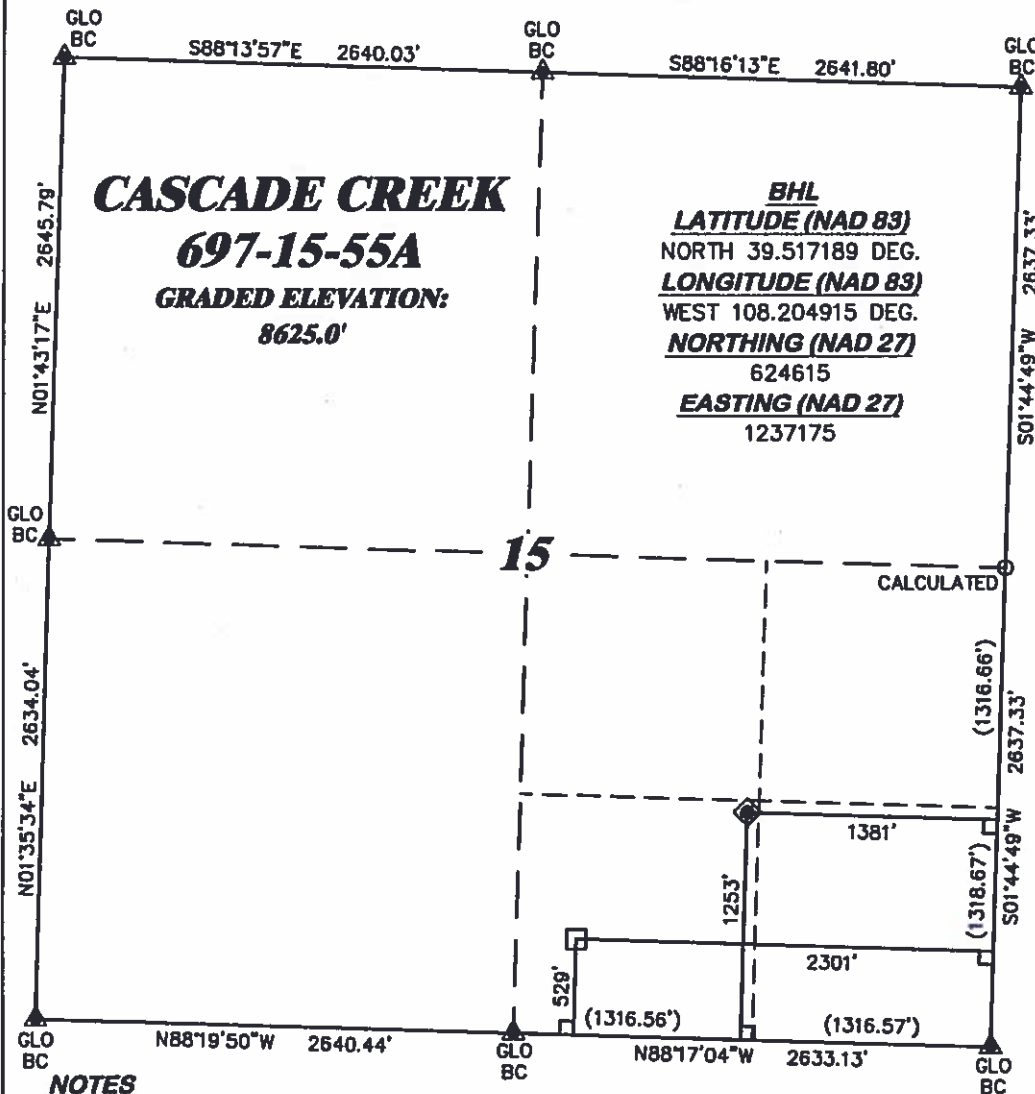


R. 97 W.



T. 6 S.

SHL
LATITUDE (NAD 83)
 NORTH 39.519174 DEG.
LONGITUDE (NAD 83)
 WEST 108.201652 DEG.
NORTHING (NAD 27)
 625310.57
EASTING (NAD 27)
 1238115.98

BASIS OF BEARING/DATUM
 SPCS CO CENTRAL NAD 27
 BASED ON GPS OBSERVATIONS
 AND OPUS SOLUTION ON DRG
 CONTROL POINT "WILLIAMS"
 HAVING A POSITION OF:
 NAD83(2011)
 LAT 39° 31' 35.18" NORTH
 LONG 108° 12' 16.79" WEST
 NAVD88 ELEVATION: 8618.08'

THE SOUTH LINE OF THE SE¼
 OF SECTION 15, MONUMENTED
 BY GLO BC'S AND BEARING
 N 88°17'04" W.

NOTES

1. GPS OPERATOR RICHARD BULLEN OBSERVED A PDOP OF 1.1.
2. ALL GPS OBSERVATIONS ARE IN COMPLIANCE WITH COGCC RULE No.215.
3. EXISTING IMPROVEMENTS WITHIN 500' OF LOCATION. SEE EXHIBIT 2D.
4. SURROUNDING SURFACE USE IS NATIVE BRUSH, NON CROP RANGELAND.

LEGEND

- ◆ WELL LOCATION
- APPROX. BHL
- L DENOTES 90° TIE
- ▲ PREVIOUSLY FOUND MONUMENT
- CALCULATED CORNER

SURVEYOR'S STATEMENT

I, RICHARD A. BULLEN JR., AN EMPLOYEE AND AGENT ON BEHALF OF D.R. GRIFFIN & ASSOCIATES, INC. STATE THE PLAT HEREON IS A CORRECT REPRESENTATION OF A SURVEY MADE UNDER MY SUPERVISION ON THE 18th DAY OF DECEMBER, 2013 OF THE SHOWN CASCADE CREEK 697-15-55A AND THAT THE LOCATION HAS BEEN STAKED ON THE GROUND.

Notice: In accordance with Colorado State Law, any legal action based upon any defect in this survey plat must commence within three (3) years after first discovery of such defect. In no event, may any action based upon any defect in this survey plat be commenced more than ten (10) years from the date of certification shown hereon.

CC 697-15-54 PAD



RIFFIN & ASSOCIATES, INC.
 1414 ELK ST., ROCK SPRINGS, WY 82901

**PLAT OF DRILLING LOCATION IN
 SWSE, SECTION 15, FOR
 OXY USA WTP LP**

**1253' F/SL, & 1381' F/EL, SECTION 15,
 T. 6 S., R. 97 W., 6TH P.M.,
 GARFIELD COUNTY, COLORADO**

DRAWN: 9/24/2013 - TCM

SCALE: 1" = 1000'

REVISED: 1/29/2014 - TCM

DRG JOB No. 20159

NAME CHANGE

EXHIBIT 1