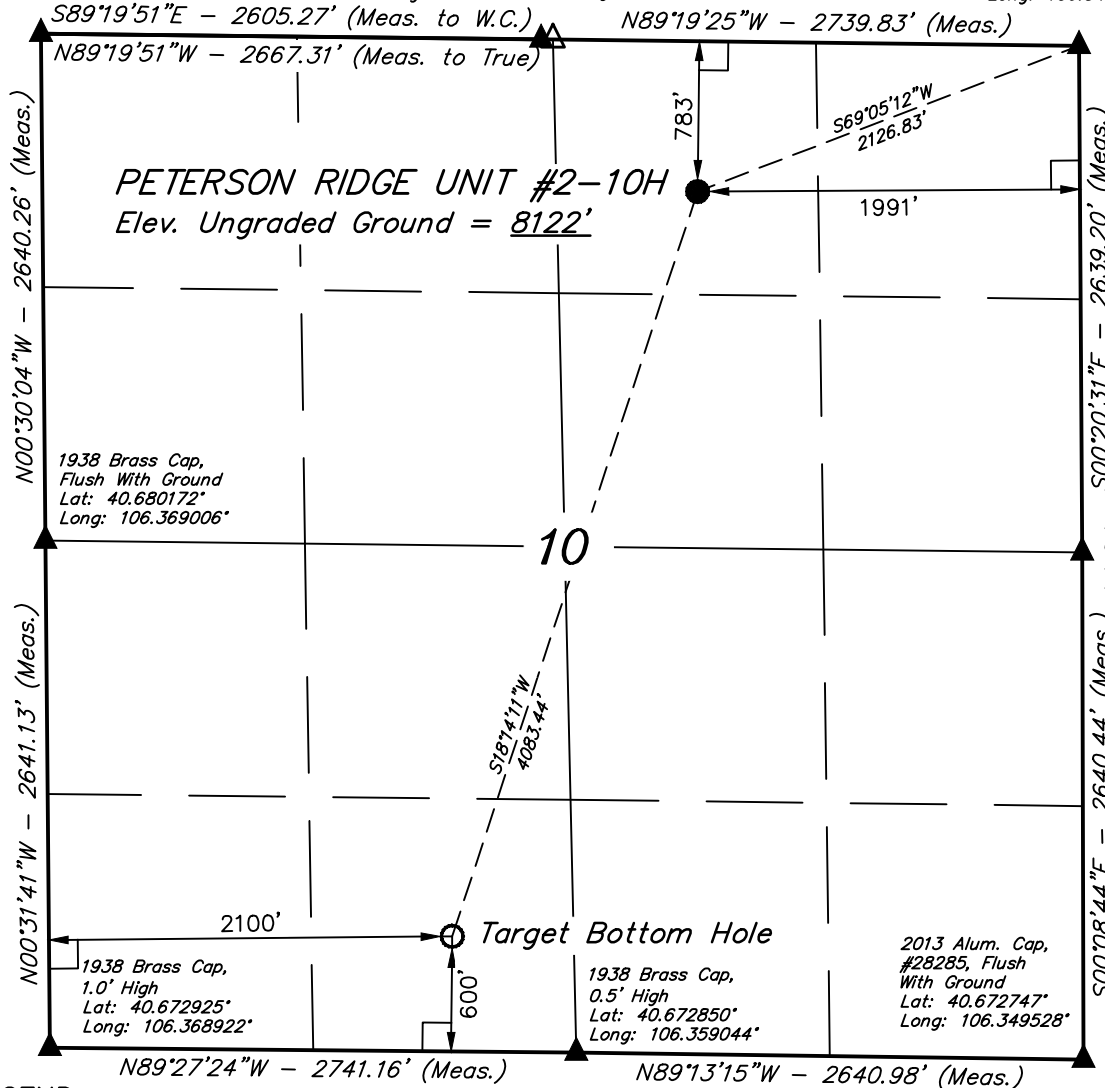


T8N, R80W, 6th P.M.

1938 Brass Cap,
0.8' High
Lat: 40.687414°
Long: 106.369086°

W.C.
1938 Brass Cap
Lat: 40.687328°
Long: 106.359697°
True Position
Lat: 40.687325°
Long: 106.359472°

1938 Brass Cap,
1.0' High
Lat: 40.687233°
Long: 106.349597°



PETERSON RIDGE UNIT #2-10H
Elev. Ungraded Ground = 8122'

10

Target Bottom Hole

LEGEND:

- └─┘ = 90° SYMBOL
- = PROPOSED WELL HEAD.
- ▲ = SECTION CORNERS LOCATED.
- △ = SECTION CORNERS RE-ESTABLISHED.
(Not Set on Ground.)

NAD 83 (TARGET BOTTOM HOLE)	NAD 83 (SURFACE LOCATION)
LATITUDE = 40°40'28.25" (40.674514)	LATITUDE = 40°41'06.55" (40.685153)
LONGITUDE = 106°21'40.94" (106.361372)	LONGITUDE = 106°21'24.34" (106.356761)
NAD 27 (TARGET BOTTOM HOLE)	NAD 27 (SURFACE LOCATION)
LATITUDE = 40°40'28.33" (40.674536)	LATITUDE = 40°41'06.64" (40.685178)
LONGITUDE = 106°21'38.84" (106.360789)	LONGITUDE = 106°21'22.23" (106.356175)
STATE PLANE NAD 83	STATE PLANE NAD 83
N: 1489728.95 E: 2761073.99	N: 1493592.52 E: 2762390.73
STATE PLANE NAD 27	STATE PLANE NAD 27
N: 489727.02 E: 1761229.85	N: 493590.60 E: 1762546.54

PDOP = 1.3

EE3 LLC.

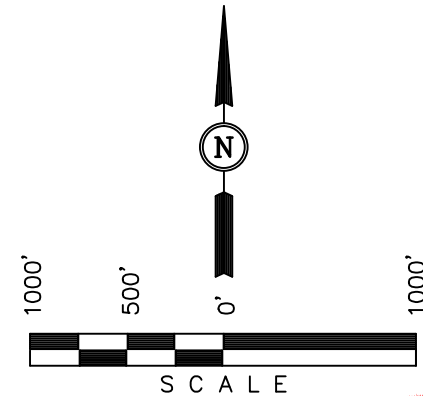
Well location, PETERSON RIDGE UNIT #2-10H,
located as shown in the NW 1/4 NE 1/4 of
Section 10, T8N, R80W, 6th P.M., Jackson County,
Colorado.

BASIS OF ELEVATION

SPOT ELEVATION AT THE SOUTHEAST CORNER OF SECTION
29, T7N, R80W, 6th P.M., TAKEN FROM THE COALMONT
QUADRANGLE, COLORADO, JACKSON COUNTY, 7.5 MINUTE
QUAD (TOPOGRAPHIC MAP) PUBLISHED BY THE UNITED
STATES DEPARTMENT OF THE INTERIOR, GEOLOGICAL SURVEY.
SAID ELEVATION IS MARKED AS BEING 8156 FEET.

BASIS OF BEARINGS

BASIS OF BEARINGS IS A G.P.S. OBSERVATION.



CERTIFICATION

THIS IS TO CERTIFY THAT THE ABOVE PLAT WAS PREPARED FROM
FIELD NOTES OF ACTUAL SURVEYS MADE BY ME OR UNDER MY
SUPERVISION AND THAT THE SAME ARE TRUE AND CORRECT TO THE
BEST OF MY KNOWLEDGE AND BELIEF.

REGISTERED LAND SURVEYOR
REGISTRATION NO. 28285
STATE OF COLORADO

UINTAH ENGINEERING & LAND SURVEYING
85 SOUTH 200 EAST - VERNAL, UTAH 84078
(435) 789-1017

SCALE 1" = 1000'	DATE SURVEYED: 10-09-13	DATE DRAWN: 10-28-13
PARTY DAVE SWANSON D.M.S. J.S.	REFERENCES G.L.O. PLAT	
WEATHER COOL	FILE EE3 LLC.	