

Berry Farms Tank Battery 31N-8HZ Facility Layout Drawing



PROPOSED BERRY FARMS
31N-8HZ FACILITY



AREA PLAN
SCALE: AS NOTED

THIS DRAWING AND THE DESIGN IT COVERS ARE CONFIDENTIAL AND REMAIN THE PROPERTY OF ANADARKO PETROLEUM CORPORATION AND SHALL NOT BE DISCLOSED TO OTHERS OR REPRODUCED IN ANY MANNER OR USED FOR ANY PURPOSE WHATSOEVER EXCEPT BY WRITTEN PERMISSION BY THE OWNER.

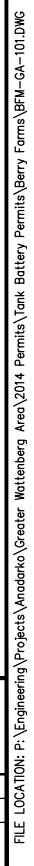
<div>NOTES:</div> <div>1. EQUIPMENT PLACEMENT IS APPROXIMATE AND SUBJECT TO MINOR MODIFICATION DUE TO SITE SPECIFIC CIRCUMSTANCES.</div>			REFERENCE DRAWINGS		REVISIONS					
BFM-GA-101	BERRY FARMS - PLOT PLAN WITH EQUIPMENT LOCATIONS		ISSUED FOR PERMIT	CAN	02/04/14	MPC	02/04/14			
DWG. NO.	TITLE	NO.	DESCRIPTION	BY	DATE	CHK.	DATE	APPR.	DATE	



PIPELINE STRATEGIES & INTEGRITY

GREATER WATTENBERG AREA		
BERRY FARMS		
AREA PLAN		
DRAWN BY: CEK	CREATION DATE: 01/29/14	AFE No.:
APPROVED:	APPR. DATE:	
DWG. No.:	BFM-GA-100	
SCALE: 1"= 60' (FULL SIZE)	SHEET No. 1 OF 1	

PLOT STYLE: Anadarko Piping 11x17.ctb



SCALE AS NOTED

— — — — DRIVEWAY
— — — — ABOVE GRADE PIPE

DRAWN BY: CEK		CREATION DATE: 01/29/14		AFE No.:	
APPROVED:		APPR. DATE:			
SCALE: 1"= 10' (FULL SIZE)		DWG. No.: BFM-GA-101			SHEET No. 1 OF 1

REFERENCE DRAWINGS		REVISIONS					
BFM-GA-100	BERRY FARMS - AREA PLAN		ISSUED FOR PERMIT	CAN	02/04/14	MPC	02/04/14
DWG. NO.	TITLE	NO.	DESCRIPTION	BY	DATE	CHK.	DATE APPR. DATE

