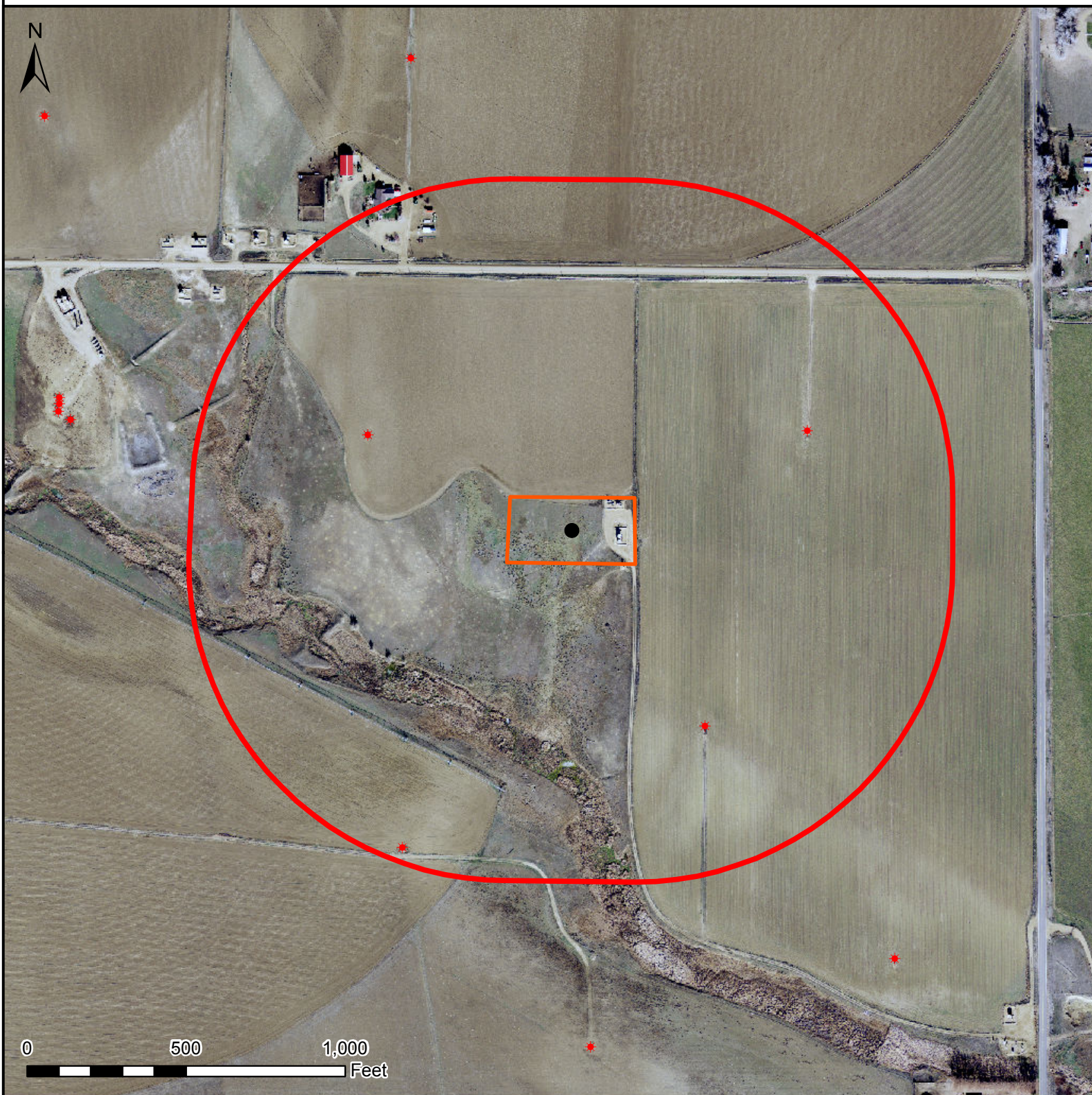





# HYDROLOGY MAP

## BERRY FARMS TANK BATTERY 31N-8HZ



### Legend

-  1000' buffer
-  Tank Battery (proposed)
-  Existing oil/gas well (COGCC)

### Nearest Surface Water Feature

Wetlands: 675' S  
Wetlands elevation: 4805'  
Tank Battery elevation: 4823.4'

All measurements are made from  
the reference location.



Date created: 1/7/2014  
Created by: APC Regulatory GIS  
Scale: 1:5,000  
Projection: NAD83 UTM 13N