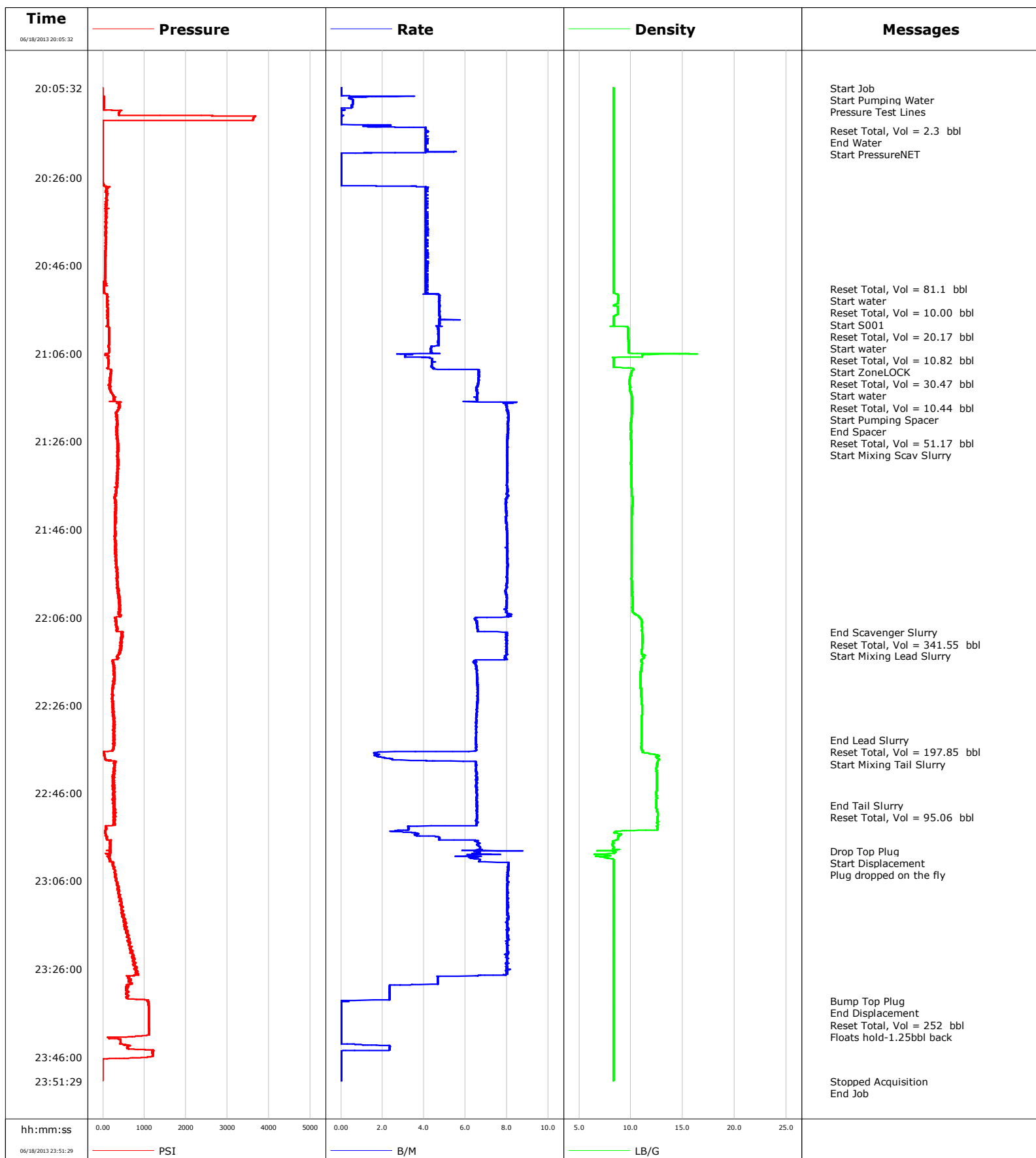


**Well** SGU 8504E-24  
**Field** Wild Cat  
**Engineer** Michael Simon  
**Country** United States

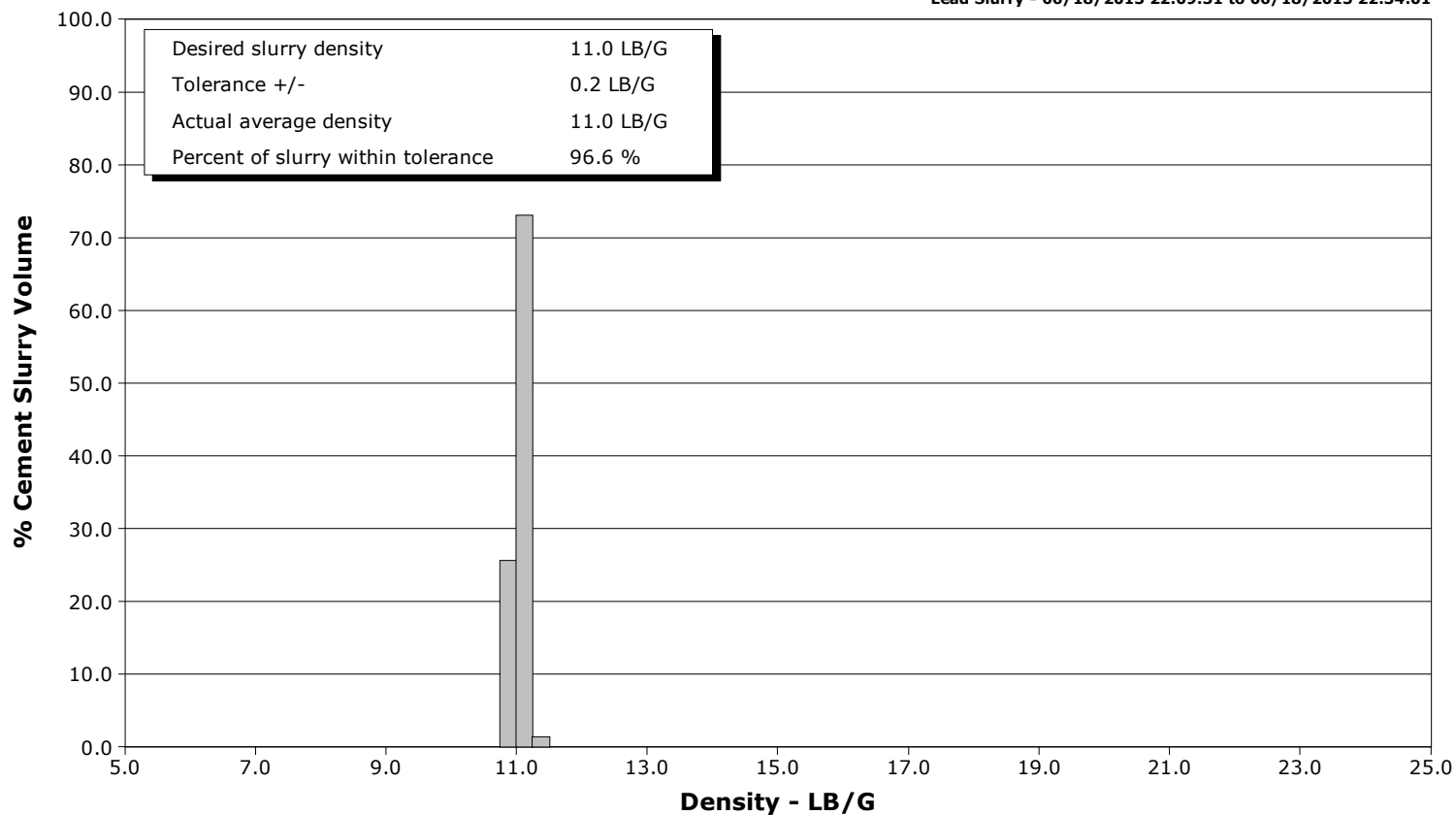
**Client** Encana  
**SIR No.** CAIO-00147  
**Job Type** Surafce  
**Job Date** 06-18-2013



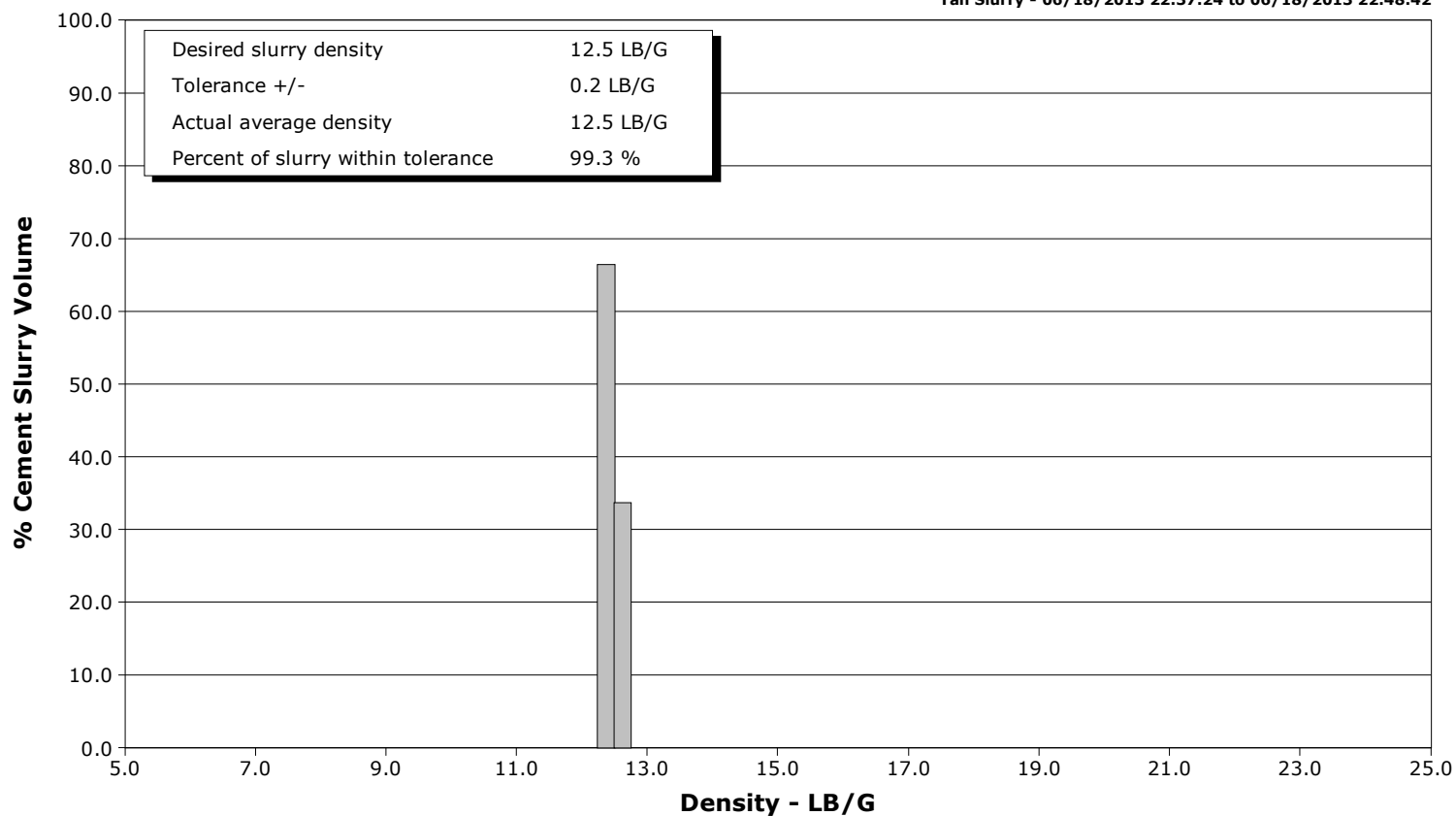
**Well** SGU 8504E-24  
**Field** Wild Cat  
**Engineer** Michael Simon  
**Country** United States

**Client** Encana  
**SIR No.** CAIO-00147  
**Job Type** Surafce  
**Job Date** 06-18-2013

**Lead Slurry - 06/18/2013 22:09:31 to 06/18/2013 22:34:01**



**Tail Slurry - 06/18/2013 22:37:24 to 06/18/2013 22:48:42**





# Cementing Service Report

					Customer Encana			Job Number CAIO-00147							
Well SGU 8504E-24 8504E-24				Location (legal) Grand Junction			Schlumberger Location Rock Springs			Job Start Jun/18/2013					
Field Wild Cat		Formation Name/Type			Deviation		Bit Size 14.8 in		Well MD 3310.0 ft		Well TVD 3309.0 ft				
County Garfield		State/Province Colorado			BHP		BHST 125 degF		BHCT 97 degF		Pore Press. Gradient				
Well Master 0631465739		API/UWI													
Rig Name Patterson 330		Drilled For Gas		Service Via Land		Casing/Liner									
Offshore Zone		Well Class New		Well Type Development		Depth, ft		Size, in		Weight, lb/ft		Grade		Thread	
						3308.5		9.630		36.0		J55		8RD	
Drilling Fluid Type		Max. Density 9.00 lb/gal		Plastic Viscosity		Tubing/Drill Pipe									
						Depth,		Size,		Weight,		Grade		Thread	
Service Line Cementing		Job Type Surafce													
Max. Allowed Tub. Press 4000 psi		Max. Allowed Ann. Press		WH Connection Single Cement head		Perforations/Open Hole									
Service Instructions						Top,		Bottom,				No. of Shots		Total Interval	
														Diameter	
Treat Down Casing				Displacement 252.0 bbl				Packer Type				Packer Depth			
Tubing Vol.				Casing Vol. 255.8 bbl				Annular Vol. 419.0 bbl				Openhole Vol. 692.0 bbl			
Casing/Tubing Secured <input checked="" type="checkbox"/>		1 Hole Vol. Circulated prior to Cement <input checked="" type="checkbox"/>				Casing Tools				Squeeze Job					
Lift Pressure 1637 psi						Shoe Type Guide				Squeeze Type					
Pipe Rotated <input type="checkbox"/>		Pipe Reciprocated <input type="checkbox"/>				Shoe Depth 3308.5 ft				Tool Type					
No. Centralizers 22		Top Plugs 1		Bottom Plugs		Stage Tool Type				Tool Depth					
Cement Head Type Single						Stage Tool Depth				Tail Pipe Size					
Job Scheduled For Jun/18/2013		Arrived on Location Jun/18/2013		Leave Location Jun/18/2013		Collar Type Float				Tail Pipe Depth					
						Collar Depth 3263.1 ft				Sqz. Total Vol.					
Date	Time 24-hr clock	Treating Pressure PSI	Flow Rate B/M	Density LB/G	Volume BBL	Stage BBL	Message								
06/18/2013	18:38:08						Started Acquisition								
06/18/2013	20:05:32	-19	0.0	8.30	0.0	0.0									
06/18/2013	20:05:33						Start Job								
06/18/2013	20:05:33	-19	0.0	8.30	0.0	0.0									
06/18/2013	20:05:37						Start Pumping Water								
06/18/2013	20:05:37	-20	0.0	8.30	0.0	0.0									
06/18/2013	20:05:39						Pressure Test Lines								
06/18/2013	20:05:39	-19	0.0	8.30	0.0	0.0									
06/18/2013	20:08:08	21	0.5	8.30	0.8	0.8									
06/18/2013	20:11:08	393	0.0	8.30	2.0	2.0									
06/18/2013	20:14:08	-9	2.4	8.30	2.3	2.3									
06/18/2013	20:15:15						Reset Total, Vol = 2.3 bbl								
06/18/2013	20:15:15	-9	4.1	8.30	6.0	6.0									
06/18/2013	20:15:17						End Water								
06/18/2013	20:15:17	-9	4.1	8.30	0.1	0.1									
06/18/2013	20:16:46						Start PressureNET								
06/18/2013	20:16:46	-9	4.1	8.30	6.2	6.2									
06/18/2013	20:17:08	-9	4.1	8.30	7.7	7.7									
06/18/2013	20:20:08	-9	5.6	8.30	20.0	20.0									
06/18/2013	20:23:08	-9	0.0	8.30	21.1	21.1									
06/18/2013	20:26:08	-9	0.0	8.30	21.1	21.1									

Well			Field		Job Start	Customer	Job Number
SGU 8504E-24 8504E-24			Wild Cat		Jun/18/2013	Encana	CAIO-00147
Date	Time 24-hr clock	Treating Pressure PSI	Flow Rate B/M	Density LB/G	Volume BBL	Stage BBL	Message
06/18/2013	20:32:08	55	4.1	8.30	38.1	38.1	
06/18/2013	20:35:08	84	4.1	8.30	50.4	50.4	
06/18/2013	20:38:08	61	4.1	8.30	62.7	62.7	
06/18/2013	20:41:08	76	4.1	8.30	74.9	74.9	
06/18/2013	20:44:08	64	4.1	8.30	87.2	87.2	
06/18/2013	20:47:08	49	4.2	8.30	99.5	99.5	
06/18/2013	20:50:08	36	4.1	8.30	111.8	111.8	
06/18/2013	20:51:19						Reset Total, Vol = 81.1 bbl
06/18/2013	20:51:19	24	4.1	8.30	116.6	116.6	
06/18/2013	20:51:52						Start water
06/18/2013	20:51:52	24	4.1	8.30	2.2	2.2	
06/18/2013	20:52:32						Reset Total, Vol = 10.00 bbl
06/18/2013	20:52:32	64	4.4	8.67	5.0	5.0	
06/18/2013	20:52:55						Start S001
06/18/2013	20:52:55	99	4.7	8.76	1.8	1.8	
06/18/2013	20:53:08	110	4.7	8.76	2.8	2.8	
06/18/2013	20:56:08	111	4.7	8.76	17.0	17.0	
06/18/2013	20:57:50						Reset Total, Vol = 20.17 bbl
06/18/2013	20:57:50	110	4.8	8.31	25.1	25.1	
06/18/2013	20:58:25						Start water
06/18/2013	20:58:25	111	4.9	8.30	2.8	2.8	
06/18/2013	20:59:08	116	4.7	8.30	6.2	6.2	
06/18/2013	20:59:41						Reset Total, Vol = 10.82 bbl
06/18/2013	20:59:41	110	4.7	8.30	8.8	8.8	
06/18/2013	21:00:10						Start ZoneLOCK
06/18/2013	21:00:10	145	4.7	9.71	2.3	2.3	
06/18/2013	21:02:08	146	4.7	9.76	11.5	11.5	
06/18/2013	21:05:08	148	4.3	9.77	25.3	25.3	
06/18/2013	21:06:25						Reset Total, Vol = 30.47 bbl
06/18/2013	21:06:25	63	3.1	11.05	30.5	30.5	
06/18/2013	21:06:37						Start water
06/18/2013	21:06:37	128	3.1	11.05	0.6	0.6	
06/18/2013	21:07:48						Reset Total, Vol = 10.44 bbl
06/18/2013	21:07:48	129	4.4	8.31	5.4	5.4	
06/18/2013	21:07:54						Start Pumping Spacer
06/18/2013	21:07:54	139	4.4	8.31	0.4	0.4	
06/18/2013	21:08:08	135	4.4	8.30	1.5	1.5	
06/18/2013	21:11:08	195	6.7	9.98	18.0	18.0	
06/18/2013	21:14:08	155	6.5	9.87	37.8	37.8	
06/18/2013	21:16:06						End Spacer
06/18/2013	21:16:06	273	6.6	10.11	50.7	50.7	
06/18/2013	21:16:47						Reset Total, Vol = 51.17 bbl
06/18/2013	21:16:47	272	6.5	10.12	55.2	55.2	
06/18/2013	21:16:49						Start Mixing Scav Slurry
06/18/2013	21:16:49	272	6.6	10.12	0.2	0.2	
06/18/2013	21:17:08	395	8.5	10.13	2.4	2.4	
06/18/2013	21:20:08	317	8.1	10.08	26.5	26.5	
06/18/2013	21:23:08	334	8.0	10.00	50.6	50.6	
06/18/2013	21:26:08	336	8.0	10.01	74.7	74.7	
06/18/2013	21:29:08	342	8.0	10.02	98.8	98.8	
06/18/2013	21:32:08	351	8.0	10.01	122.8	122.8	
06/18/2013	21:35:08	340	8.0	10.03	146.8	146.8	
06/18/2013	21:38:08	301	8.0	10.08	170.9	170.9	
06/18/2013	21:41:08	292	8.0	10.13	194.8	194.8	

Well			Field		Job Start	Customer		Job Number
SGU 8504E-24 8504E-24			Wild Cat		Jun/18/2013	Encana		CAIO-00147
Date	Time 24-hr clock	Treating Pressure PSI	Flow Rate B/M	Density LB/G	Volume BBL	Stage BBL	Message	
06/18/2013	21:47:08	302	8.0	10.07	242.6	242.6		
06/18/2013	21:50:08	302	8.0	10.07	266.6	266.6		
06/18/2013	21:53:08	308	8.0	10.08	290.7	290.7		
06/18/2013	21:56:08	358	8.0	10.07	314.7	314.7		
06/18/2013	21:59:08	361	8.0	10.08	338.7	338.7		
06/18/2013	22:02:08	404	8.0	10.15	362.6	362.6		
06/18/2013	22:05:08	377	8.1	10.33	386.5	386.5		
06/18/2013	22:08:08	328	6.6	11.05	407.5	407.5		
06/18/2013	22:09:25						End Scavenger Slurry	
06/18/2013	22:09:25	472	8.0	11.09	416.0	416.0		
06/18/2013	22:09:29						Reset Total, Vol = 341.55 bbl	
06/18/2013	22:09:29	455	8.0	11.09	416.5	416.5		
06/18/2013	22:09:31						Start Mixing Lead Slurry	
06/18/2013	22:09:31	443	8.0	11.09	0.3	0.3		
06/18/2013	22:11:08	425	8.0	11.10	13.2	13.2		
06/18/2013	22:14:08	385	8.0	11.02	37.1	37.1		
06/18/2013	22:17:08	263	6.5	11.01	58.9	58.9		
06/18/2013	22:20:08	278	6.6	10.94	78.5	78.5		
06/18/2013	22:23:08	221	6.6	10.98	98.2	98.2		
06/18/2013	22:26:08	242	6.6	11.06	118.0	118.0		
06/18/2013	22:29:08	272	6.5	11.04	137.6	137.6		
06/18/2013	22:32:08	265	6.5	11.03	157.1	157.1		
06/18/2013	22:34:01						End Lead Slurry	
06/18/2013	22:34:01	287	6.5	11.01	169.4	169.4		
06/18/2013	22:34:33						Reset Total, Vol = 197.85 bbl	
06/18/2013	22:34:33	275	6.5	11.01	172.9	172.9		
06/18/2013	22:35:08	262	6.5	11.01	176.7	176.7		
06/18/2013	22:37:24						Start Mixing Tail Slurry	
06/18/2013	22:37:24	32	1.6	12.59	1.6	1.6		
06/18/2013	22:38:08	49	2.3	12.60	3.0	3.0		
06/18/2013	22:41:08	286	6.5	12.47	20.4	20.4		
06/18/2013	22:44:08	232	6.5	12.51	40.0	40.0		
06/18/2013	22:47:08	268	6.5	12.48	59.6	59.6		
06/18/2013	22:48:42						End Tail Slurry	
06/18/2013	22:48:42	276	6.5	12.47	69.8	69.8		
06/18/2013	22:48:44						Reset Total, Vol = 95.06 bbl	
06/18/2013	22:48:44	268	6.6	12.46	70.1	70.1		
06/18/2013	22:50:08	259	6.5	12.48	9.2	9.2		
06/18/2013	22:53:08	295	6.5	12.57	28.8	28.8		
06/18/2013	22:56:08	90	4.7	8.75	40.2	40.2		
06/18/2013	22:59:08						Drop Top Plug	
06/18/2013	22:59:08	167	7.7	6.76	58.9	58.9		
06/18/2013	22:59:09						Start Displacement	
06/18/2013	22:59:09	181	8.8	6.76	59.0	59.0		
06/18/2013	22:59:25						Plug dropped on the fly	
06/18/2013	22:59:25	178	6.5	8.54	60.9	60.9		
06/18/2013	23:02:08	241	8.1	8.32	79.3	79.3		
06/18/2013	23:05:08	306	8.0	8.32	103.4	103.4		
06/18/2013	23:08:08	371	8.0	8.32	127.5	127.5		
06/18/2013	23:11:08	459	8.0	8.32	151.6	151.6		
06/18/2013	23:14:08	505	8.1	8.31	175.6	175.6		
06/18/2013	23:17:08	556	8.0	8.31	199.7	199.7		
06/18/2013	23:20:08	661	8.0	8.31	223.8	223.8		
06/18/2013	23:23:08	694	8.0	8.31	247.8	247.8		

Well			Field		Job Start	Customer		Job Number
SGU 8504E-24 8504E-24			Wild Cat		Jun/18/2013	Encana		CAIO-00147
Date	Time 24-hr clock	Treating Pressure PSI	Flow Rate B/M	Density LB/G	Volume BBL	Stage BBL	Message	
06/18/2013	23:29:08	673	4.7	8.31	290.5	290.5		
06/18/2013	23:32:08	614	2.3	8.31	298.6	298.6		
06/18/2013	23:33:18						Bump Top Plug	
06/18/2013	23:33:18	1089	0.0	8.31	300.9	300.9		
06/18/2013	23:33:20						End Displacement	
06/18/2013	23:33:20	1081	0.0	8.31	300.9	300.9		
06/18/2013	23:34:22						Reset Total, Vol = 252 bbl	
06/18/2013	23:34:22	1097	0.0	8.31	301.0	301.0		
06/18/2013	23:35:08	1097	0.0	8.31	0.0	0.0		
06/18/2013	23:37:23						Floats hold-1.25bbl back	
06/18/2013	23:37:23	1103	0.0	8.31	0.0	0.0		
06/18/2013	23:38:08	1104	0.0	8.31	0.0	0.0		
06/18/2013	23:41:08	1058	0.0	8.31	0.1	0.1		
06/18/2013	23:44:08	593	2.4	8.31	2.1	2.1		
06/18/2013	23:47:08	-17	0.0	8.31	3.2	3.2		
06/18/2013	23:50:08	-20	0.0	8.31	3.2	3.2		
06/18/2013	23:51:29	-20	0.0	8.31	3.2	3.2		
06/18/2013	23:51:29						Stopped Acquisition	

Post Job Summary

Average Pump Rates, bbl/min					Volume of Fluid Injected, bbl					
Slurry 5.7	N2	Mud 0.0	Maximum Rate 8.8		Total Slurry 633.0	Mud 0.0	Spacer 50.0	N2		
Treating Pressure Summary, psi					Breakdown Fluid					
Maximum 3675	Final -17	Average 341	Bump Plug to 986	Breakdown	Type		Volume		Density	
Avg. N2 Percent		Designed Slurry Volume 628.0 bbl		Displacement 252.0 bbl		Mix Water Temp 80 degF		Cement Circulated to Surface? <input checked="" type="checkbox"/>		Volume 350.0 bbl
								Washed Thru Perfs <input type="checkbox"/>		
Customer or Authorized Representative Buddy Burke				Schlumberger Supervisor Michael Simon				Circulation Lost <input type="checkbox"/>		Job Completed <input checked="" type="checkbox"/>
								-		-