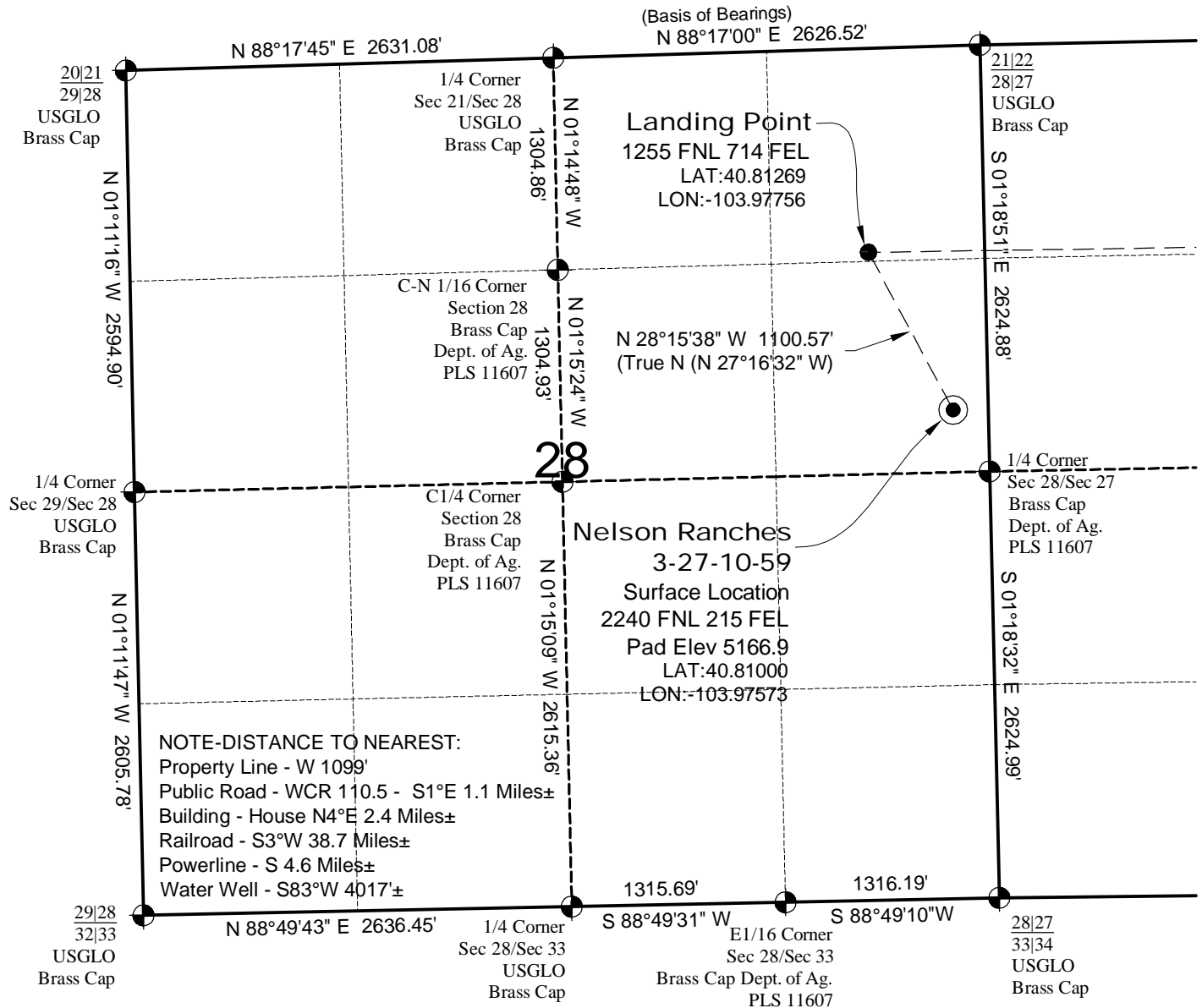


# WELL LOCATION MAP

**NELSON RANCHES  
1-27-10-59 PAD**

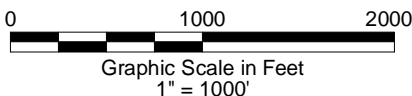


## SURVEYOR'S STATEMENT

The undersigned hereby states that the well location shown hereon was staked on the ground based on existing monumentation and/or physical evidence found in the field and is correct to the best of my knowledge, information and belief.

## NOTES

- 1.) Horizontal (NAD 83) and vertical (NAVD 88) datum is based on the Leica Geosystems SmartNet of Colorado.
- 2.) All directions, distances, and dimensions shown hereon are based on coordinates from the "Colorado coordinate system of 1983 north zone" (article 52 of title 38, C.R.S.).
- 3.) All section line dimensions shown hereon are based on field measurements of existing monuments and/or physical evidence found in the field unless otherwise indicated.
- 4.) Physical features shown hereon are for graphical representation only.
- 5.) See Form 2A for visible improvements within 500' of wellhead.
- 6.) Distances to nearest section lines are measured perpendicularly.
- 7.) This is not a land survey nor land survey plat.
- 8.) Date of Survey 2/17/14; Date of Drawing 2/18/14. REV 2  
PDOP Reading: 1.8 Instrument Operator: Jim Grabowski



**GEO SURV**

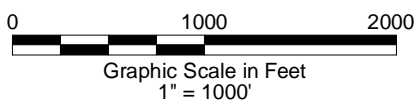
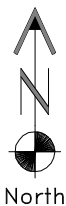
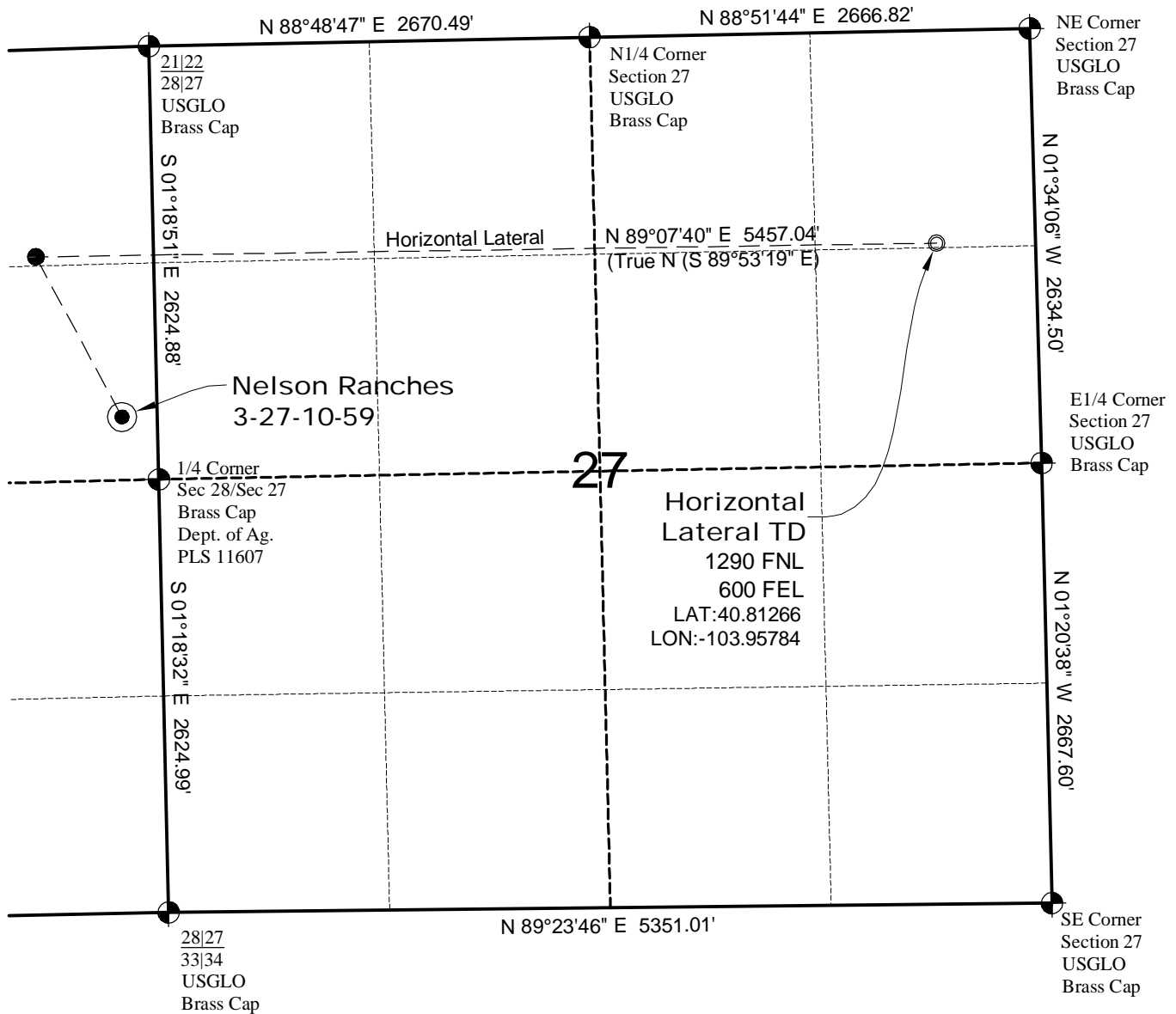
LAND SURVEYING AND MAPPING  
LAFAYETTE - WINTER PARK  
Ph 303 666 0379 Fx 303 665 6320

**CARRIZO NIOBRARA LLC  
NELSON RANCHES 3-27-10-59**

**SL SE1/4 NE1/4 SEC. 28 T10N R59W  
HL TD NE1/4 NE1/4 SEC. 27 T10N R59W  
6th PM WELD COUNTY COLORADO**

# HORIZONTAL LATERAL TD MAP

**NELSON RANCHES  
1-27-10-59 PAD**



**GEO SURV**

LAND SURVEYING AND MAPPING  
LAFAYETTE - WINTER PARK  
Ph 303 666 0379 Fx 303 665 6320

**CARRIZO NIOBRARA LLC  
NELSON RANCHES 3-27-10-59**

**SL SE1/4 NE1/4 SEC. 28 T10N R59W  
HL TD NE1/4 NE1/4 SEC. 27 T10N R59W  
6th PM WELD COUNTY COLORADO**