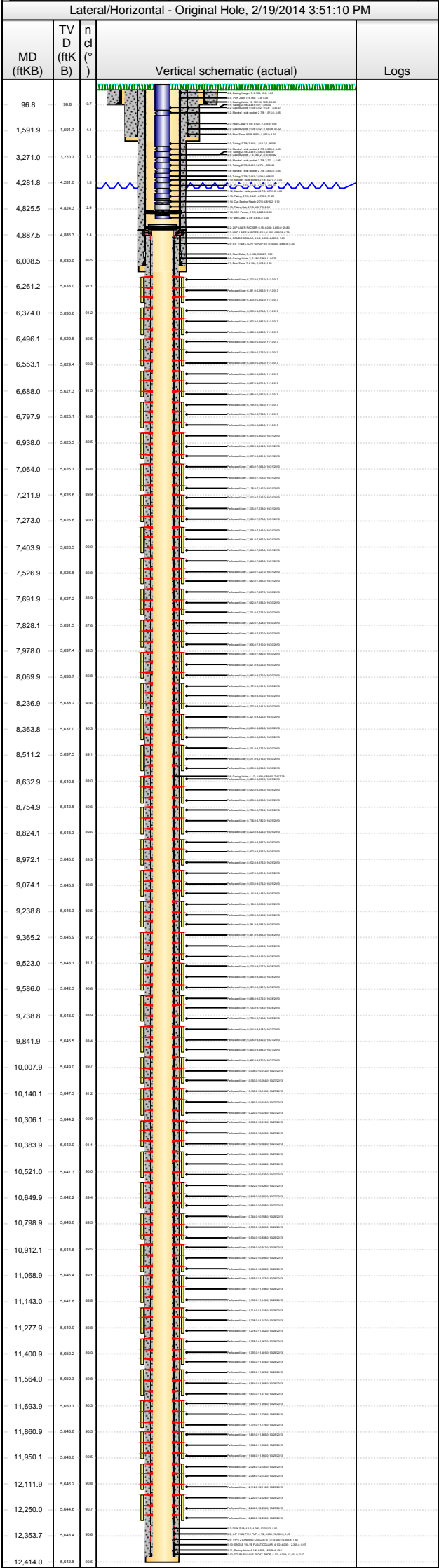




Lease Review All CR
Well Name: RAZOR 27K-3405A

API Number 051233774800			WPC ID 1CO076888			Well Permit Number			Field Name DJ Horizontal Niobrara				County Weld			State CO	
Well Configuration Type Lateral/Horizontal					Orig KB Elv (ft) 4,766.30		Ground Elevation (ft) 4,749.50		Casing Flange Elevation (ft)		Tubing Head Elevation (ft)			Total Depth (ftKB) 12,414.0			
Original Spud Date 8/9/2013		Completion Date 11/1/2013		Asset Group Redtail Asset Group			Responsible Engineer Gary Nordlander			N/S Dist (ft) 2,322.0		N/S Ref FSL		E/W Dist (ft) 1,914.0		E/W Ref FWL	
Lot		Quarter 1 NE	Quarter 2 SW	Quarter 3	Quarter 4	Section 27	Section Suffix	Section Type		Township 10	Township N/S Dir N	Range 58	Range E/W Dir W	Meridian 6TH			



Wellbore Sections					
Wellbore Name	Start Date	Size (in)	Act Top (ftKB)	Act Btm (ftKB)	
Original Hole	8/4/2013	20	16.8	96.8	
Original Hole	8/9/2013	13 1/2	96.8	1,605.0	
Original Hole	8/10/2013	8 3/4	1,605.0	6,024.0	
Original Hole	8/12/2013	6	6,024.0	12,414.0	
Conductor Pipe, 96.8ftKB					
OD (in)	Wt (lb/ft)	Grade	Top (ftKB)	Btm (ftKB)	Item Des
16	75.00	J-55	16.8	96.8	Casing Joints
Surface Csg, 1,593.5ftKB					
OD (in)	Wt (lb/ft)	Grade	Top (ftKB)	Btm (ftKB)	Item Des
9 5/8	36.00	J-55	16.8	16.8	Landing Joint
9 5/8	36.00	J-55	16.8	1,549.3	Casing Joints
9 5/8	36.00	J-55	1,549.3	1,550.8	Float Collar
9 5/8	36.00	J-55	1,550.8	1,592.0	Casing Joints
9 5/8	36.00	J-55	1,592.0	1,593.5	Float Shoe
Frac String, 4,858.8ftKB					
OD (in)	Wt (lb/ft)	Grade	Top (ftKB)	Btm (ftKB)	Item Des
7 1/16			-17.0	-16.3	Casing Hanger
4 1/2	15.50	P-110	-16.3	15.8	PH-6
4 1/2	15.50	P-110	15.8	23.1	PH-6 Sub
4 1/2	15.50	P-110	23.1	30.3	PH-6 Sub
4 1/2	15.50	P-110	30.3	35.6	PH-6 Sub
4 1/2	15.50	P-110	35.6	4,846.8	PH-6
5 3/4			4,846.8	4,849.1	Collar 4-1/2" LTC X 4-1/2" PH-6
5 1/4			4,849.1	4,858.8	Floating Seal Assembly
Intermediate Csg, 6,009.9ftKB					
OD (in)	Wt (lb/ft)	Grade	Top (ftKB)	Btm (ftKB)	Item Des
7	29.00	HCL-80	16.8	16.8	Landing Joint
7	29.00	HCL-80	16.8	17.8	Casing Hanger
7	29.00	HCL-80	17.8	21.8	PUP Joint
7	29.00	HCL-80	21.8	5,962.7	Casing Joints
7	29.00	HCL-80	5,962.7	5,964.2	Float Collar
7	29.00	HCL-80	5,964.2	6,008.4	Casing Joints
7	29.00	HCL-80	6,008.4	6,009.9	Float Shoe
Liner, 12,404.0ftKB					
OD (in)	Wt (lb/ft)	Grade	Top (ftKB)	Btm (ftKB)	Item Des
4 1/2	11.60	L-80	4,860.0	4,860.0	Casing Joints
6.184			4,860.0	4,880.8	ZXP LINER PACKER
6.184			4,880.8	4,887.6	HMC LINER HANGER
4 1/2			4,887.6	4,888.6	COMBO COLLAR
4 1/2			4,888.6	4,894.0	4.5" 11.6# LTC P110 PUP
4 1/2	11.60	L-80	4,894.0	12,351.3	Casing Joints
4 1/2			12,351.3	12,352.3	DISK SUB
4 1/2			12,352.3	12,353.8	4.5" 11.6# P110 PUP
4 1/2			12,353.8	12,355.4	TYPE 2 LANDING COLLAR
4 1/2			12,355.4	12,356.4	SINGLE VALVE FLOAT COLLAR
4 1/2	11.60	L-80	12,356.4	12,401.5	Casing Joints
4 1/2			12,401.5	12,404.0	DOUBLE VALVE FLOAT SHOE
Cement Stages					
Des	Pump Start Date	Drill Out Date	Top (ftKB)	Btm (ftKB)	Top Meas Meth
Conductor Cement	8/4/2013		16.8	96.8	Returns to Surface
Surface Casing Cement	8/9/2013		16.8	1,593.5	Returns to Surface
Intermediate Casing Cement	8/1/2013		16.8	6,009.9	Returns to Surface
Liner Cement	8/17/2013		4,860.0	12,404.0	Returns to Surface
Perforations					
Type of Hole	Date	Top (ftKB)	Btm (ftKB)	Zone	
Perforated Liner	11/1/2013	6,222.0	6,225.0	Niobrara, Original Hole	
Perforated Liner	11/1/2013	6,261.0	6,265.0	Niobrara, Original Hole	
Perforated Liner	11/1/2013	6,300.0	6,304.0	Niobrara, Original Hole	
Perforated Liner	11/1/2013	6,370.0	6,374.0	Niobrara, Original Hole	
Perforated Liner	11/1/2013	6,392.0	6,396.0	Niobrara, Original Hole	

Lease Review All CR																
Well Name: RAZOR 27K-3405A																
API Number 051233774800		WPC ID 1CO076888			Well Permit Number			Field Name DJ Horizontal Niobrara			County Weld		State CO			
Well Configuration Type Lateral/Horizontal			Orig KB Elv (ft) 4,766.30			Ground Elevation (ft) 4,749.50		Casing Flange Elevation (ft)		Tubing Head Elevation (ft)		Total Depth (ftKB) 12,414.0				
Original Spud Date 8/9/2013		Completion Date 11/1/2013		Asset Group Redtail Asset Group			Responsible Engineer Gary Nordlander			N/S Dist (ft) 2,322.0		N/S Ref FSL		E/W Dist (ft) 1,914.0		E/W Ref FWL
Lot		Quarter 1 NE	Quarter 2 SW	Quarter 3	Quarter 4	Section 27	Section Suffix	Section Type		Township 10	Township N/S Dir N	Range 58		Range E/W Dir W	Meridian 6TH	
Lateral/Horizontal - Original Hole, 2/19/2014 3:51:11 PM							Perforations									
MD (ftKB)		TV D (ftK B)	n cl (°)	Vertical schematic (actual)			Logs	Type of Hole	Date	Top (ftKB)	Btm (ftKB)	Zone				
								Perforated Liner	11/1/2013	6,425.0	6,429.0	Niobrara, Original Hole				
96.8		96.8	0.7					Perforated Liner	11/1/2013	6,496.0	6,500.0	Niobrara, Original Hole				
1,591.9		1,591.7	1.1					Perforated Liner	11/1/2013	6,519.0	6,523.0	Niobrara, Original Hole				
3,271.0		3,270.7	1.1					Perforated Liner	11/1/2013	6,549.0	6,553.0	Niobrara, Original Hole				
4,281.8		4,281.0	12					Perforated Liner	11/1/2013	6,630.0	6,634.0	Niobrara, Original Hole				
4,825.5		4,824.3	24					Perforated Liner	11/1/2013	6,667.0	6,671.0	Niobrara, Original Hole				
4,887.5		4,886.3	14					Perforated Liner	11/1/2013	6,688.0	6,692.0	Niobrara, Original Hole				
6,008.5		6,008.0	88.5					Perforated Liner	11/1/2013	6,759.0	6,763.0	Niobrara, Original Hole				
6,261.2		6,260.6	91.1					Perforated Liner	11/1/2013	6,794.0	6,798.0	Niobrara, Original Hole				
6,374.0		6,373.0	91.2					Perforated Liner	11/1/2013	6,816.0	6,820.0	Niobrara, Original Hole				
6,496.1		6,495.5	88.5					Perforated Liner	10/31/2013	6,899.0	6,903.0	Niobrara, Original Hole				
6,553.1		6,552.4	90.3					Perforated Liner	10/31/2013	6,938.0	6,942.0	Niobrara, Original Hole				
6,688.0		6,687.3	91.5					Perforated Liner	10/31/2013	6,977.0	6,981.0	Niobrara, Original Hole				
6,797.9		6,797.1	89.9					Perforated Liner	10/31/2013	7,060.0	7,064.0	Niobrara, Original Hole				
6,938.0		6,937.5	88.5					Perforated Liner	10/31/2013	7,099.0	7,103.0	Niobrara, Original Hole				
7,064.0		7,063.1	88.8					Perforated Liner	10/31/2013	7,138.0	7,142.0	Niobrara, Original Hole				
7,211.9		7,211.0	89.9					Perforated Liner	10/31/2013	7,212.0	7,216.0	Niobrara, Original Hole				
7,273.0		7,272.6	90.0					Perforated Liner	10/31/2013	7,235.0	7,239.0	Niobrara, Original Hole				
7,403.9		7,403.5	90.0					Perforated Liner	10/31/2013	7,269.0	7,273.0	Niobrara, Original Hole				
7,526.9		7,526.8	88.8					Perforated Liner	10/31/2013	7,339.0	7,343.0	Niobrara, Original Hole				
7,691.9		7,691.2	88.8					Perforated Liner	10/31/2013	7,361.0	7,365.0	Niobrara, Original Hole				
7,828.1		7,827.5	91.4					Perforated Liner	10/31/2013	7,404.0	7,408.0	Niobrara, Original Hole				
7,978.0		7,977.4	88.5					Perforated Liner	10/31/2013	7,484.0	7,488.0	Niobrara, Original Hole				
8,069.9		8,069.7	88.8					Perforated Liner	10/31/2013	7,523.0	7,527.0	Niobrara, Original Hole				
8,236.9		8,236.2	90.4					Perforated Liner	10/31/2013	7,562.0	7,566.0	Niobrara, Original Hole				
8,363.8		8,363.0	89.3					Perforated Liner	10/30/2013	7,653.0	7,657.0	Niobrara, Original Hole				
8,511.2		8,510.7	88.1					Perforated Liner	10/30/2013	7,692.0	7,696.0	Niobrara, Original Hole				
8,632.9		8,632.6	88.0					Perforated Liner	10/30/2013	7,731.0	7,735.0	Niobrara, Original Hole				
8,754.9		8,754.8	88.5					Perforated Liner	10/30/2013	7,824.0	7,828.0	Niobrara, Original Hole				
8,824.1		8,824.3	88.4					Perforated Liner	10/30/2013	7,866.0	7,870.0	Niobrara, Original Hole				
8,972.1		8,972.0	88.3					Perforated Liner	10/30/2013	7,906.0	7,910.0	Niobrara, Original Hole				
9,074.1		9,074.5	88.8					Perforated Liner	10/30/2013	7,978.0	7,982.0	Niobrara, Original Hole				
9,238.8		9,238.6	88.5					Perforated Liner	10/30/2013	8,021.0	8,025.0	Niobrara, Original Hole				
9,365.2		9,365.9	91.2					Perforated Liner	10/30/2013	8,066.0	8,070.0	Niobrara, Original Hole				
9,523.0		9,523.1	91.1					Perforated Liner	10/30/2013	8,157.0	8,161.0	Niobrara, Original Hole				
9,586.0		9,586.3	90.4					Perforated Liner	10/30/2013	8,198.0	8,202.0	Niobrara, Original Hole				
9,738.8		9,738.0	88.8					Perforated Liner	10/30/2013	8,237.0	8,241.0	Niobrara, Original Hole				
9,841.9		9,841.5	88.4					Perforated Liner	10/30/2013	8,321.0	8,325.0	Niobrara, Original Hole				
10,007.9		10,007.0	88.7					Perforated Liner	10/30/2013	8,360.0						
10,140.1		10,140.3	91.2					Perforated Liner	10/30/2013							
10,306.1		10,306.2	88.9					Perforated Liner	10/30/2013							
10,383.9		10,383.9	91.1					Perforated Liner	10/30/2013							
10,521.0		10,521.3	90.0					Perforated Liner	10/30/2013							
10,649.9		10,649.2	88.4					Perforated Liner	10/30/2013							
10,798.9		10,798.5	88.5					Perforated Liner	10/30/2013							
10,912.1		10,912.6	88.5					Perforated Liner	10/30/2013							
11,068.9		11,068.4	88.1					Perforated Liner	10/30/2013							
11,143.0		11,143.7	88.8					Perforated Liner	10/30/2013							
11,277.9		11,277.9	88.8					Perforated Liner	10/30/2013							
11,400.9		11,400.2	88.8					Perforated Liner	10/30/2013							
11,564.0		11,564.3	88.8					Perforated Liner	10/30/2013							
11,693.9		11,693.1	90.3					Perforated Liner	10/30/2013							
11,860.9		11,860.8	88.5					Perforated Liner	10/30/2013							
11,950.1		11,950.0	90.5					Perforated Liner	10/30/2013							
12,111.9		12,111.9	88.8					Perforated Liner	10/30/2013							
12,250.0		12,250.6	88.7					Perforated Liner	10/30/2013							
12,353.7		12,353.4	88.4					Perforated Liner	10/30/2013							
12,414.0		12,414.9	90.4					Perforated Liner	10/30/2013							

Lease Review All CR																																																																																																																																																																																																																																																																																																																																																																																																																																																																																																																																																																																																																																																																														
Well Name: RAZOR 27K-3405A																																																																																																																																																																																																																																																																																																																																																																																																																																																																																																																																																																																																																																																																														
API Number 051233774800			WPC ID 1C0076888			Well Permit Number			Field Name DJ Horizontal Niobrara			County Weld		State CO																																																																																																																																																																																																																																																																																																																																																																																																																																																																																																																																																																																																																																																																
Well Configuration Type Lateral/Horizontal			Orig KB Elv (ft) 4,766.30			Ground Elevation (ft) 4,749.50		Casing Flange Elevation (ft)		Tubing Head Elevation (ft)		Total Depth (ftKB) 12,414.0																																																																																																																																																																																																																																																																																																																																																																																																																																																																																																																																																																																																																																																																		
Original Spud Date 8/9/2013		Completion Date 11/1/2013		Asset Group Redtail Asset Group			Responsible Engineer Gary Nordlander			N/S Dist (ft) 2,322.0		N/S Ref FSL	E/W Dist (ft) 1,914.0		E/W Ref FWL																																																																																																																																																																																																																																																																																																																																																																																																																																																																																																																																																																																																																																																															
Lot		Quarter 1 NE	Quarter 2 SW	Quarter 3	Quarter 4	Section 27	Section Suffix	Section Type		Township 10	Township N/S Dir N	Range 58		Range E/W Dir W	Meridian 6TH																																																																																																																																																																																																																																																																																																																																																																																																																																																																																																																																																																																																																																																															
Lateral/Horizontal - Original Hole, 2/19/2014 3:51:12 PM																																																																																																																																																																																																																																																																																																																																																																																																																																																																																																																																																																																																																																																																														
Perforations																																																																																																																																																																																																																																																																																																																																																																																																																																																																																																																																																																																																																																																																														
<table><tr><th colspan="2">MD (ftKB)</th><th colspan="2">TV D (ftKB)</th><th colspan="2">n cl (° B)</th><th colspan="2">Type of Hole</th><th colspan="2">Date</th><th colspan="2">Top (ftKB)</th><th colspan="2">Btm (ftKB)</th><th colspan="2">Zone</th></tr><tr><td colspan="2"></td><td colspan="2"></td><td colspan="2"></td><td colspan="2">Perforated Liner</td><td colspan="2">10/30/2013</td><td colspan="2">8,400.0</td><td colspan="2">8,404.0</td><td colspan="2">Niobrara, Original Hole</td></tr><tr><td colspan="2"></td><td colspan="2"></td><td colspan="2"></td><td colspan="2">Perforated Liner</td><td colspan="2">10/30/2013</td><td colspan="2">8,471.0</td><td colspan="2">8,475.0</td><td colspan="2">Niobrara, Original Hole</td></tr><tr><td colspan="2"></td><td colspan="2"></td><td colspan="2"></td><td colspan="2">Perforated Liner</td><td colspan="2">10/30/2013</td><td colspan="2">8,511.0</td><td colspan="2">8,515.0</td><td colspan="2">Niobrara, Original Hole</td></tr><tr><td colspan="2"></td><td colspan="2"></td><td colspan="2"></td><td colspan="2">Perforated Liner</td><td colspan="2">10/30/2013</td><td colspan="2">8,550.0</td><td colspan="2">8,554.0</td><td colspan="2">Niobrara, Original Hole</td></tr><tr><td colspan="2"></td><td colspan="2"></td><td colspan="2"></td><td colspan="2">Perforated Liner</td><td colspan="2">10/29/2013</td><td colspan="2">8,629.0</td><td colspan="2">8,633.0</td><td colspan="2">Niobrara, Original Hole</td></tr><tr><td colspan="2"></td><td colspan="2"></td><td colspan="2"></td><td colspan="2">Perforated Liner</td><td colspan="2">10/29/2013</td><td colspan="2">8,652.0</td><td colspan="2">8,656.0</td><td colspan="2">Niobrara, Original Hole</td></tr><tr><td colspan="2"></td><td colspan="2"></td><td colspan="2"></td><td colspan="2">Perforated Liner</td><td colspan="2">10/29/2013</td><td colspan="2">8,690.0</td><td colspan="2">8,694.0</td><td colspan="2">Niobrara, Original Hole</td></tr><tr><td colspan="2"></td><td colspan="2"></td><td colspan="2"></td><td colspan="2">Perforated Liner</td><td colspan="2">10/29/2013</td><td colspan="2">8,755.0</td><td colspan="2">8,759.0</td><td colspan="2">Niobrara, Original Hole</td></tr><tr><td colspan="2"></td><td colspan="2"></td><td colspan="2"></td><td colspan="2">Perforated Liner</td><td colspan="2">10/29/2013</td><td colspan="2">8,778.0</td><td colspan="2">8,782.0</td><td colspan="2">Niobrara, Original Hole</td></tr><tr><td colspan="2"></td><td colspan="2"></td><td colspan="2"></td><td colspan="2">Perforated Liner</td><td colspan="2">10/29/2013</td><td colspan="2">8,820.0</td><td colspan="2">8,824.0</td><td colspan="2">Niobrara, Original Hole</td></tr><tr><td colspan="2"></td><td colspan="2"></td><td colspan="2"></td><td colspan="2">Perforated Liner</td><td colspan="2">10/29/2013</td><td colspan="2">8,893.0</td><td colspan="2">8,897.0</td><td colspan="2">Niobrara, Original Hole</td></tr><tr><td colspan="2"></td><td colspan="2"></td><td colspan="2"></td><td colspan="2">Perforated Liner</td><td colspan="2">10/29/2013</td><td colspan="2">8,932.0</td><td colspan="2">8,936.0</td><td colspan="2">Niobrara, Original Hole</td></tr><tr><td colspan="2"></td><td colspan="2"></td><td colspan="2"></td><td colspan="2">Perforated Liner</td><td colspan="2">10/29/2013</td><td colspan="2">8,972.0</td><td colspan="2">8,976.0</td><td colspan="2">Niobrara, Original Hole</td></tr><tr><td colspan="2"></td><td colspan="2"></td><td colspan="2"></td><td colspan="2">Perforated Liner</td><td colspan="2">10/29/2013</td><td colspan="2">9,047.0</td><td colspan="2">9,051.0</td><td colspan="2">Niobrara, Original Hole</td></tr><tr><td colspan="2"></td><td colspan="2"></td><td colspan="2"></td><td colspan="2">Perforated Liner</td><td colspan="2">10/29/2013</td><td colspan="2">9,070.0</td><td colspan="2">9,074.0</td><td colspan="2">Niobrara, Original Hole</td></tr><tr><td colspan="2"></td><td colspan="2"></td><td colspan="2"></td><td colspan="2">Perforated Liner</td><td colspan="2">10/29/2013</td><td colspan="2">9,114.0</td><td colspan="2">9,118.0</td><td colspan="2">Niobrara, Original Hole</td></tr><tr><td colspan="2"></td><td colspan="2"></td><td colspan="2"></td><td colspan="2">Perforated Liner</td><td colspan="2">10/29/2013</td><td colspan="2">9,196.0</td><td colspan="2">9,200.0</td><td colspan="2">Niobrara, Original Hole</td></tr><tr><td colspan="2"></td><td colspan="2"></td><td colspan="2"></td><td colspan="2">Perforated Liner</td><td colspan="2">10/29/2013</td><td colspan="2">9,239.0</td><td colspan="2">9,243.0</td><td colspan="2">Niobrara, Original Hole</td></tr><tr><td colspan="2"></td><td colspan="2"></td><td colspan="2"></td><td colspan="2">Perforated Liner</td><td colspan="2">10/29/2013</td><td colspan="2">9,281.0</td><td colspan="2">9,285.0</td><td colspan="2">Niobrara, Original Hole</td></tr><tr><td colspan="2"></td><td colspan="2"></td><td colspan="2"></td><td colspan="2">Perforated Liner</td><td colspan="2">10/28/2013</td><td colspan="2">9,361.0</td><td colspan="2">9,365.0</td><td colspan="2">Niobrara, Original Hole</td></tr><tr><td colspan="2"></td><td colspan="2"></td><td colspan="2"></td><td colspan="2">Perforated Liner</td><td colspan="2">10/28/2013</td><td colspan="2">9,400.0</td><td colspan="2">9,404.0</td><td colspan="2">Niobrara, Original Hole</td></tr><tr><td colspan="2"></td><td colspan="2"></td><td colspan="2"></td><td colspan="2">Perforated Liner</td><td colspan="2">10/28/2013</td><td colspan="2">9,439.0</td><td colspan="2">9,443.0</td><td colspan="2">Niobrara, Original Hole</td></tr><tr><td colspan="2"></td><td colspan="2"></td><td colspan="2"></td><td colspan="2">Perforated Liner</td><td colspan="2">10/28/2013</td><td colspan="2">9,523.0</td><td colspan="2">9,527.0</td><td colspan="2">Niobrara, Original Hole</td></tr><tr><td colspan="2"></td><td colspan="2"></td><td colspan="2"></td><td colspan="2">Perforated Liner</td><td colspan="2">10/28/2013</td><td colspan="2">9,558.0</td><td colspan="2">9,562.0</td><td colspan="2">Niobrara, Original Hole</td></tr><tr><td colspan="2"></td><td colspan="2"></td><td colspan="2"></td><td colspan="2">Perforated Liner</td><td colspan="2">10/28/2013</td><td colspan="2">9,582.0</td><td colspan="2">9,586.0</td><td colspan="2">Niobrara, Original Hole</td></tr><tr><td colspan="2"></td><td colspan="2"></td><td colspan="2"></td><td colspan="2">Perforated Liner</td><td colspan="2">10/28/2013</td><td colspan="2">9,668.0</td><td colspan="2">9,672.0</td><td colspan="2">Niobrara, Original Hole</td></tr><tr><td colspan="2"></td><td colspan="2"></td><td colspan="2"></td><td colspan="2">Perforated Liner</td><td colspan="2">10/28/2013</td><td colspan="2">9,704.0</td><td colspan="2">9,708.0</td><td colspan="2">Niobrara, Original Hole</td></tr><tr><td colspan="2"></td><td colspan="2"></td><td colspan="2"></td><td colspan="2">Perforated Liner</td><td colspan="2">10/28/2013</td><td colspan="2">9,739.0</td><td colspan="2">9,743.0</td><td colspan="2">Niobrara, Original Hole</td></tr><tr><td colspan="2"></td><td colspan="2"></td><td colspan="2"></td><td colspan="2">Perforated Liner</td><td colspan="2">10/27/2013</td><td colspan="2">9,814.0</td><td colspan="2">9,818.0</td><td colspan="2">Niobrara, Original Hole</td></tr><tr><td colspan="2"></td><td colspan="2"></td><td colspan="2"></td><td colspan="2">Perforated Liner</td><td colspan="2">10/27/2013</td><td colspan="2">9,838.0</td><td colspan="2">9,842.0</td><td colspan="2">Niobrara, Original Hole</td></tr><tr><td colspan="2"></td><td colspan="2"></td><td colspan="2"></td><td colspan="2">Perforated Liner</td><td colspan="2">10/27/2013</td><td colspan="2">9,880.0</td><td colspan="2">9,884.0</td><td colspan="2">Niobrara, Original Hole</td></tr><tr><td colspan="2"></td><td colspan="2"></td><td colspan="2"></td><td colspan="2">Perforated Liner</td><td colspan="2">10/27/2013</td><td colspan="2">9,966.0</td><td colspan="2">9,970.0</td><td colspan="2">Niobrara, Original Hole</td></tr><tr><td colspan="2"></td><td colspan="2"></td><td colspan="2"></td><td colspan="2">Perforated Liner</td><td colspan="2">10/27/2013</td><td colspan="2">10,008.0</td><td colspan="2">10,012.0</td><td colspan="2">Niobrara, Original Hole</td></tr><tr><td colspan="2"></td><td colspan="2"></td><td colspan="2"></td><td colspan="2">Perforated Liner</td><td colspan="2">10/27/2013</td><td colspan="2">10,050.0</td><td colspan="2">10,054.0</td><td colspan="2">Niobrara, Original Hole</td></tr><tr><td colspan="2"></td><td colspan="2"></td><td colspan="2"></td><td colspan="2">Perforated Liner</td><td colspan="2">10/27/2013</td><td colspan="2">10,136.0</td><td colspan="2">10,140.0</td><td colspan="2">Niobrara, Original Hole</td></tr><tr><td colspan="2"></td><td colspan="2"></td><td colspan="2"></td><td colspan="2">Perforated Liner</td><td colspan="2">10/27/2013</td><td colspan="2">10,180.0</td><td colspan="2">10,184.0</td><td colspan="2">Niobrara, Original Hole</td></tr><tr><td colspan="2"></td><td colspan="2"></td><td colspan="2"></td><td colspan="2">Perforated Liner</td><td colspan="2">10/27/2013</td><td colspan="2">10,220.0</td><td colspan="2">10,224.0</td><td colspan="2">Niobrara, Original Hole</td></tr><tr><td colspan="2"></td><td colspan="2"></td><td colspan="2"></td><td colspan="2">Perforated Liner</td><td colspan="2">10/27/2013</td><td colspan="2">10,306.0</td><td colspan="2">10,310.0</td><td colspan="2">Niobrara, Original Hole</td></tr><tr><td colspan="2"></td><td colspan="2"></td><td colspan="2"></td><td colspan="2">Perforated Liner</td><td colspan="2">10/27/2013</td><td colspan="2">10,345.0</td><td colspan="2">10,349.0</td><td colspan="2">Niobrara, Original Hole</td></tr></table>															MD (ftKB)		TV D (ftKB)		n cl (° B)		Type of Hole		Date		Top (ftKB)		Btm (ftKB)		Zone								Perforated Liner		10/30/2013		8,400.0		8,404.0		Niobrara, Original Hole								Perforated Liner		10/30/2013		8,471.0		8,475.0		Niobrara, Original Hole								Perforated Liner		10/30/2013		8,511.0		8,515.0		Niobrara, Original Hole								Perforated Liner		10/30/2013		8,550.0		8,554.0		Niobrara, Original Hole								Perforated Liner		10/29/2013		8,629.0		8,633.0		Niobrara, Original Hole								Perforated Liner		10/29/2013		8,652.0		8,656.0		Niobrara, Original Hole								Perforated Liner		10/29/2013		8,690.0		8,694.0		Niobrara, Original Hole								Perforated Liner		10/29/2013		8,755.0		8,759.0		Niobrara, Original Hole								Perforated Liner		10/29/2013		8,778.0		8,782.0		Niobrara, Original Hole								Perforated Liner		10/29/2013		8,820.0		8,824.0		Niobrara, Original Hole								Perforated Liner		10/29/2013		8,893.0		8,897.0		Niobrara, Original Hole								Perforated Liner		10/29/2013		8,932.0		8,936.0		Niobrara, Original Hole								Perforated Liner		10/29/2013		8,972.0		8,976.0		Niobrara, Original Hole								Perforated Liner		10/29/2013		9,047.0		9,051.0		Niobrara, Original Hole								Perforated Liner		10/29/2013		9,070.0		9,074.0		Niobrara, Original Hole								Perforated Liner		10/29/2013		9,114.0		9,118.0		Niobrara, Original Hole								Perforated Liner		10/29/2013		9,196.0		9,200.0		Niobrara, Original Hole								Perforated Liner		10/29/2013		9,239.0		9,243.0		Niobrara, Original Hole								Perforated Liner		10/29/2013		9,281.0		9,285.0		Niobrara, Original Hole								Perforated Liner		10/28/2013		9,361.0		9,365.0		Niobrara, Original Hole								Perforated Liner		10/28/2013		9,400.0		9,404.0		Niobrara, Original Hole								Perforated Liner		10/28/2013		9,439.0		9,443.0		Niobrara, Original Hole								Perforated Liner		10/28/2013		9,523.0		9,527.0		Niobrara, Original Hole								Perforated Liner		10/28/2013		9,558.0		9,562.0		Niobrara, Original Hole								Perforated Liner		10/28/2013		9,582.0		9,586.0		Niobrara, Original Hole								Perforated Liner		10/28/2013		9,668.0		9,672.0		Niobrara, Original Hole								Perforated Liner		10/28/2013		9,704.0		9,708.0		Niobrara, Original Hole								Perforated Liner		10/28/2013		9,739.0		9,743.0		Niobrara, Original Hole								Perforated Liner		10/27/2013		9,814.0		9,818.0		Niobrara, Original Hole								Perforated Liner		10/27/2013		9,838.0		9,842.0		Niobrara, Original Hole								Perforated Liner		10/27/2013		9,880.0		9,884.0		Niobrara, Original Hole								Perforated Liner		10/27/2013		9,966.0		9,970.0		Niobrara, Original Hole								Perforated Liner		10/27/2013		10,008.0		10,012.0		Niobrara, Original Hole								Perforated Liner		10/27/2013		10,050.0		10,054.0		Niobrara, Original Hole								Perforated Liner		10/27/2013		10,136.0		10,140.0		Niobrara, Original Hole								Perforated Liner		10/27/2013		10,180.0		10,184.0		Niobrara, Original Hole								Perforated Liner		10/27/2013		10,220.0		10,224.0		Niobrara, Original Hole								Perforated Liner		10/27/2013		10,306.0		10,310.0		Niobrara, Original Hole								Perforated Liner		10/27/2013		10,345.0		10,349.0		Niobrara, Original Hole	
MD (ftKB)		TV D (ftKB)		n cl (° B)		Type of Hole		Date		Top (ftKB)		Btm (ftKB)		Zone																																																																																																																																																																																																																																																																																																																																																																																																																																																																																																																																																																																																																																																																
						Perforated Liner		10/30/2013		8,400.0		8,404.0		Niobrara, Original Hole																																																																																																																																																																																																																																																																																																																																																																																																																																																																																																																																																																																																																																																																
						Perforated Liner		10/30/2013		8,471.0		8,475.0		Niobrara, Original Hole																																																																																																																																																																																																																																																																																																																																																																																																																																																																																																																																																																																																																																																																
						Perforated Liner		10/30/2013		8,511.0		8,515.0		Niobrara, Original Hole																																																																																																																																																																																																																																																																																																																																																																																																																																																																																																																																																																																																																																																																
						Perforated Liner		10/30/2013		8,550.0		8,554.0		Niobrara, Original Hole																																																																																																																																																																																																																																																																																																																																																																																																																																																																																																																																																																																																																																																																
						Perforated Liner		10/29/2013		8,629.0		8,633.0		Niobrara, Original Hole																																																																																																																																																																																																																																																																																																																																																																																																																																																																																																																																																																																																																																																																
						Perforated Liner		10/29/2013		8,652.0		8,656.0		Niobrara, Original Hole																																																																																																																																																																																																																																																																																																																																																																																																																																																																																																																																																																																																																																																																
						Perforated Liner		10/29/2013		8,690.0		8,694.0		Niobrara, Original Hole																																																																																																																																																																																																																																																																																																																																																																																																																																																																																																																																																																																																																																																																
						Perforated Liner		10/29/2013		8,755.0		8,759.0		Niobrara, Original Hole																																																																																																																																																																																																																																																																																																																																																																																																																																																																																																																																																																																																																																																																
						Perforated Liner		10/29/2013		8,778.0		8,782.0		Niobrara, Original Hole																																																																																																																																																																																																																																																																																																																																																																																																																																																																																																																																																																																																																																																																
						Perforated Liner		10/29/2013		8,820.0		8,824.0		Niobrara, Original Hole																																																																																																																																																																																																																																																																																																																																																																																																																																																																																																																																																																																																																																																																
						Perforated Liner		10/29/2013		8,893.0		8,897.0		Niobrara, Original Hole																																																																																																																																																																																																																																																																																																																																																																																																																																																																																																																																																																																																																																																																
						Perforated Liner		10/29/2013		8,932.0		8,936.0		Niobrara, Original Hole																																																																																																																																																																																																																																																																																																																																																																																																																																																																																																																																																																																																																																																																
						Perforated Liner		10/29/2013		8,972.0		8,976.0		Niobrara, Original Hole																																																																																																																																																																																																																																																																																																																																																																																																																																																																																																																																																																																																																																																																
						Perforated Liner		10/29/2013		9,047.0		9,051.0		Niobrara, Original Hole																																																																																																																																																																																																																																																																																																																																																																																																																																																																																																																																																																																																																																																																
						Perforated Liner		10/29/2013		9,070.0		9,074.0		Niobrara, Original Hole																																																																																																																																																																																																																																																																																																																																																																																																																																																																																																																																																																																																																																																																
						Perforated Liner		10/29/2013		9,114.0		9,118.0		Niobrara, Original Hole																																																																																																																																																																																																																																																																																																																																																																																																																																																																																																																																																																																																																																																																
						Perforated Liner		10/29/2013		9,196.0		9,200.0		Niobrara, Original Hole																																																																																																																																																																																																																																																																																																																																																																																																																																																																																																																																																																																																																																																																
						Perforated Liner		10/29/2013		9,239.0		9,243.0		Niobrara, Original Hole																																																																																																																																																																																																																																																																																																																																																																																																																																																																																																																																																																																																																																																																
						Perforated Liner		10/29/2013		9,281.0		9,285.0		Niobrara, Original Hole																																																																																																																																																																																																																																																																																																																																																																																																																																																																																																																																																																																																																																																																
						Perforated Liner		10/28/2013		9,361.0		9,365.0		Niobrara, Original Hole																																																																																																																																																																																																																																																																																																																																																																																																																																																																																																																																																																																																																																																																
						Perforated Liner		10/28/2013		9,400.0		9,404.0		Niobrara, Original Hole																																																																																																																																																																																																																																																																																																																																																																																																																																																																																																																																																																																																																																																																
						Perforated Liner		10/28/2013		9,439.0		9,443.0		Niobrara, Original Hole																																																																																																																																																																																																																																																																																																																																																																																																																																																																																																																																																																																																																																																																
						Perforated Liner		10/28/2013		9,523.0		9,527.0		Niobrara, Original Hole																																																																																																																																																																																																																																																																																																																																																																																																																																																																																																																																																																																																																																																																
						Perforated Liner		10/28/2013		9,558.0		9,562.0		Niobrara, Original Hole																																																																																																																																																																																																																																																																																																																																																																																																																																																																																																																																																																																																																																																																
						Perforated Liner		10/28/2013		9,582.0		9,586.0		Niobrara, Original Hole																																																																																																																																																																																																																																																																																																																																																																																																																																																																																																																																																																																																																																																																
						Perforated Liner		10/28/2013		9,668.0		9,672.0		Niobrara, Original Hole																																																																																																																																																																																																																																																																																																																																																																																																																																																																																																																																																																																																																																																																
						Perforated Liner		10/28/2013		9,704.0		9,708.0		Niobrara, Original Hole																																																																																																																																																																																																																																																																																																																																																																																																																																																																																																																																																																																																																																																																
						Perforated Liner		10/28/2013		9,739.0		9,743.0		Niobrara, Original Hole																																																																																																																																																																																																																																																																																																																																																																																																																																																																																																																																																																																																																																																																
						Perforated Liner		10/27/2013		9,814.0		9,818.0		Niobrara, Original Hole																																																																																																																																																																																																																																																																																																																																																																																																																																																																																																																																																																																																																																																																
						Perforated Liner		10/27/2013		9,838.0		9,842.0		Niobrara, Original Hole																																																																																																																																																																																																																																																																																																																																																																																																																																																																																																																																																																																																																																																																
						Perforated Liner		10/27/2013		9,880.0		9,884.0		Niobrara, Original Hole																																																																																																																																																																																																																																																																																																																																																																																																																																																																																																																																																																																																																																																																
						Perforated Liner		10/27/2013		9,966.0		9,970.0		Niobrara, Original Hole																																																																																																																																																																																																																																																																																																																																																																																																																																																																																																																																																																																																																																																																
						Perforated Liner		10/27/2013		10,008.0		10,012.0		Niobrara, Original Hole																																																																																																																																																																																																																																																																																																																																																																																																																																																																																																																																																																																																																																																																
						Perforated Liner		10/27/2013		10,050.0		10,054.0		Niobrara, Original Hole																																																																																																																																																																																																																																																																																																																																																																																																																																																																																																																																																																																																																																																																
						Perforated Liner		10/27/2013		10,136.0		10,140.0		Niobrara, Original Hole																																																																																																																																																																																																																																																																																																																																																																																																																																																																																																																																																																																																																																																																
						Perforated Liner		10/27/2013		10,180.0		10,184.0		Niobrara, Original Hole																																																																																																																																																																																																																																																																																																																																																																																																																																																																																																																																																																																																																																																																
						Perforated Liner		10/27/2013		10,220.0		10,224.0		Niobrara, Original Hole																																																																																																																																																																																																																																																																																																																																																																																																																																																																																																																																																																																																																																																																
						Perforated Liner		10/27/2013		10,306.0		10,310.0		Niobrara, Original Hole																																																																																																																																																																																																																																																																																																																																																																																																																																																																																																																																																																																																																																																																
						Perforated Liner		10/27/2013		10,345.0		10,349.0		Niobrara, Original Hole																																																																																																																																																																																																																																																																																																																																																																																																																																																																																																																																																																																																																																																																



Lease Review All CR
Well Name: RAZOR 27K-3405A

API Number 051233774800			WPC ID 1C0076888			Well Permit Number			Field Name DJ Horizontal Niobrara			County Weld			State CO		
Well Configuration Type Lateral/Horizontal					Orig KB Elv (ft) 4,766.30		Ground Elevation (ft) 4,749.50		Casing Flange Elevation (ft)		Tubing Head Elevation (ft)			Total Depth (ftKB) 12,414.0			
Original Spud Date 8/9/2013		Completion Date 11/1/2013		Asset Group Redtail Asset Group			Responsible Engineer Gary Nordlander			N/S Dist (ft) 2,322.0		N/S Ref FSL		E/W Dist (ft) 1,914.0		E/W Ref FWL	
Lot		Quarter 1 NE	Quarter 2 SW	Quarter 3	Quarter 4	Section 27	Section Suffix	Section Type	Township 10	Township N/S Dir N	Range 58	Range E/W Dir W	Meridian 6TH				

Lateral/Horizontal - Original Hole, 2/19/2014 3:51:14 PM					Perforations				
MD (ftKB)	TV D (ftKB)	n cl (°)			Type of Hole	Date	Top (ftKB)	Btm (ftKB)	Zone
					Perforated Liner	10/27/2013	10,380.0	10,384.0	Niobrara, Original Hole
96.8	96.8	0.7			Perforated Liner	10/27/2013	10,456.0	10,460.0	Niobrara, Original Hole
1,591.9	1,591.7	1.1			Perforated Liner	10/27/2013	10,478.0	10,482.0	Niobrara, Original Hole
3,271.0	3,270.7	1.1			Perforated Liner	10/27/2013	10,521.0	10,525.0	Niobrara, Original Hole
4,281.8	4,281.0	1.8			Perforated Liner	10/27/2013	10,622.0	10,626.0	Niobrara, Original Hole
4,825.5	4,824.3	2.4			Perforated Liner	10/27/2013	10,646.0	10,650.0	Niobrara, Original Hole
4,887.5	4,886.3	1.4			Perforated Liner	10/27/2013	10,684.0	10,688.0	Niobrara, Original Hole
6,008.5	6,030.9	98.5			Perforated Liner	10/26/2013	10,764.0	10,768.0	Niobrara, Original Hole
6,261.2	6,033.0	91.1			Perforated Liner	10/26/2013	10,799.0	10,803.0	Niobrara, Original Hole
6,374.0	6,033.9	91.2			Perforated Liner	10/26/2013	10,834.0	10,838.0	Niobrara, Original Hole
6,496.1	6,032.5	98.5			Perforated Liner	10/26/2013	10,908.0	10,912.0	Niobrara, Original Hole
6,553.1	6,032.4	98.3			Perforated Liner	10/26/2013	10,942.0	10,946.0	Niobrara, Original Hole
6,688.0	6,037.3	91.5			Perforated Liner	10/26/2013	10,984.0	10,988.0	Niobrara, Original Hole
6,797.9	6,032.1	98.8			Perforated Liner	10/26/2013	11,069.0	11,073.0	Niobrara, Original Hole
6,938.0	6,032.3	98.5			Perforated Liner	10/26/2013	11,104.0	11,108.0	Niobrara, Original Hole
7,064.0	6,036.1	98.8			Perforated Liner	10/26/2013	11,139.0	11,143.0	Niobrara, Original Hole
7,211.9	6,032.6	98.9			Perforated Liner	10/26/2013	11,214.0	11,218.0	Niobrara, Original Hole
7,273.0	6,032.6	98.0			Perforated Liner	10/26/2013	11,238.0	11,242.0	Niobrara, Original Hole
7,403.9	6,032.5	98.0			Perforated Liner	10/26/2013	11,278.0	11,282.0	Niobrara, Original Hole
7,526.9	6,032.9	98.8			Perforated Liner	10/26/2013	11,358.0	11,362.0	Niobrara, Original Hole
7,691.9	6,037.2	98.3			Perforated Liner	10/26/2013	11,397.0	11,401.0	Niobrara, Original Hole
7,828.1	6,031.5	87.6			Perforated Liner	10/26/2013	11,440.0	11,444.0	Niobrara, Original Hole
7,978.0	6,037.4	98.5			Perforated Liner	10/26/2013	11,525.0	11,529.0	Niobrara, Original Hole
8,069.9	6,038.7	98.8			Perforated Liner	10/26/2013	11,564.0	11,568.0	Niobrara, Original Hole
8,236.9	6,038.2	98.6			Perforated Liner	10/26/2013	11,607.0	11,611.0	Niobrara, Original Hole
8,363.8	6,037.0	98.3			Perforated Liner	10/26/2013	11,690.0	11,694.0	Niobrara, Original Hole
8,511.2	6,037.5	98.1			Perforated Liner	10/26/2013	11,732.0	11,736.0	Niobrara, Original Hole
8,632.9	6,040.6	98.0			Perforated Liner	10/26/2013	11,775.0	11,779.0	Niobrara, Original Hole
8,754.9	6,042.8	98.6			Perforated Liner	10/26/2013	11,861.0	11,865.0	Niobrara, Original Hole
8,824.1	6,043.3	98.8			Perforated Liner	10/26/2013	11,902.0	11,906.0	Niobrara, Original Hole
8,972.1	6,045.0	98.3			Perforated Liner	10/26/2013	11,946.0	11,950.0	Niobrara, Original Hole
9,074.1	6,045.9	98.8			Perforated Liner	10/26/2013	12,026.0	12,030.0	Niobrara, Original Hole
9,238.8	6,046.3	98.5			Perforated Liner	10/26/2013	12,068.0	12,072.0	Niobrara, Original Hole
9,365.2	6,046.9	91.2			Perforated Liner	10/26/2013	12,112.0	12,116.0	Niobrara, Original Hole
9,523.0	6,043.1	91.1			Perforated Liner	10/26/2013	12,220.0	12,224.0	Niobrara, Original Hole
9,586.0	6,042.3	98.6			Perforated Liner	10/26/2013	12,246.0	12,250.0	Niobrara, Original Hole
9,738.8	6,043.0	98.5			Perforated Liner	10/26/2013	12,286.0	12,290.0	Niobrara, Original Hole
9,841.9	6,045.5	98.4			Perforated Liner	10/25/2013			
10,007.9	6,049.0	98.7			Perforated Liner	10/25/2013			
10,140.1	6,047.3	91.2			Perforated Liner	10/25/2013			
10,306.1	6,044.2	98.9			Perforated Liner	10/25/2013			
10,383.9	6,042.9	91.1			Perforated Liner	10/25/2013			
10,521.0	6,041.3	98.0			Perforated Liner	10/25/2013			
10,649.9	6,042.2	98.4			Perforated Liner	10/25/2013			
10,798.9	6,043.6	98.5			Perforated Liner	10/25/2013			
10,912.1	6,044.8	98.5			Perforated Liner	10/25/2013			
11,068.9	6,046.4	98.1			Perforated Liner	10/25/2013			
11,143.0	6,047.8	98.8			Perforated Liner	10/25/2013			
11,277.9	6,049.9	98.5			Perforated Liner	10/25/2013			
11,400.9	6,050.2	98.9			Perforated Liner	10/25/2013			
11,564.0	6,050.3	98.8			Perforated Liner	10/25/2013			
11,693.9	6,050.1	98.3			Perforated Liner	10/25/2013			
11,860.9	6,048.9	98.5			Perforated Liner	10/25/2013			
11,950.1	6,048.0	98.5			Perforated Liner	10/25/2013			
12,111.9	6,046.2	98.8			Perforated Liner	10/25/2013			
12,250.0	6,044.6	98.7			Perforated Liner	10/25/2013			
12,353.7	6,043.4	98.6			Perforated Liner	10/25/2013			
12,414.0	6,042.9	98.5		Perforated Liner	10/25/2013				

Lease Review All CR															
Well Name: RAZOR 27K-3405A															
API Number 051233774800			WPC ID 1CO076888			Well Permit Number			Field Name DJ Horizontal Niobrara			County Weld		State CO	
Well Configuration Type Lateral/Horizontal			Orig KB Elv (ft) 4,766.30			Ground Elevation (ft) 4,749.50			Casing Flange Elevation (ft)		Tubing Head Elevation (ft)		Total Depth (ftKB) 12,414.0		
Original Spud Date 8/9/2013		Completion Date 11/1/2013		Asset Group Redtail Asset Group			Responsible Engineer Gary Nordlander			N/S Dist (ft) 2,322.0		N/S Ref FSL	E/W Dist (ft) 1,914.0		E/W Ref FWL
Lot		Quarter 1 NE	Quarter 2 SW	Quarter 3	Quarter 4	Section 27	Section Suffix	Section Type		Township 10	Township N/S Dir N	Range 58	Range E/W Dir W	Meridian 6TH	
Lateral/Horizontal - Original Hole, 2/19/2014 3:51:15 PM						Stim/Treat Stages									
MD (ftKB)	TV D (ftK B)	n cl (°)	Vertical schematic (actual)			Logs	Stage Type	Start Date	Top (ftKB)	Btm (ftKB)	Stim/Treat Fluid			Vol Clean Pump (bbl)	
96.8	96.8	0.7					Frac	11/1/2013	6,222.0	6,304.0	9000# 40/70, 165000# 20/40, 16000# CRC 20/40, Slick Water			3930.00	
1,591.9	1,591.7	1.1					Frac	11/1/2013	6,370.0	6,429.0	8991# 40/70, 165073# 20/40, 16000# CRC 20/40, Slick Water			3968.00	
3,271.0	3,270.7	1.1					Frac	11/1/2013	6,496.0	6,553.0	8903# 40/70, 166775# 20/40, 16000# CRC 20/40, Slick Water			4012.00	
4,281.8	4,281.0	1.8					Frac	11/1/2013	6,630.0	6,692.0	9000# 40/70, 167000# 20/40, 16000# CRC 20/40, Slick Water			4013.00	
4,825.5	4,824.3	2.4					Frac	11/1/2013	6,759.0	6,820.0	9000# 40/70, 165000# 20/40, 16000# CRC 20/40, Slick Water			3987.00	
4,887.5	4,886.3	1.4					Frac	10/31/2013	6,899.0	6,981.0	9000# 40/70, 165000# 20/40, 16000# CRC 20/40, Slick Water			4004.00	
6,008.5	6,020.2	88.5					Frac	10/31/2013	7,060.0	7,142.0	8818# 40/70, 166086# 20/40, 14756# CRC 20/40, Slick Water			4012.00	
6,261.2	6,020.0	91.1					Frac	10/31/2013	7,212.0	7,273.0	8733# 40/70, 166258# 20/40, 16000# CRC 20/40, Slick Water			4013.00	
6,374.0	6,020.0	91.2					Frac	10/31/2013	7,339.0	7,408.0	9000# 40/70, 165000# 20/40, 16000# CRC 20/40, Slick Water			3974.00	
6,496.1	6,020.0	88.5					Frac	10/31/2013	7,484.0	7,566.0	9000# 40/70, 167500# 20/40, 16000# CRC 20/40, Slick Water			4041.00	
6,553.1	6,020.4	90.3					Frac	10/30/2013	7,653.0	7,735.0	9000# 40/70, 165000# 20/40, 16000# CRC 20/40, Slick Water			4026.00	
6,688.0	6,027.3	91.5					Frac	10/30/2013	7,824.0	7,910.0	9257# 40/70, 162850# 20/40, 15605# CRC 20/40, Slick Water			1039.00	
6,797.9	6,025.1	90.8					Frac	10/30/2013	7,978.0	8,070.0	8819# 40/70, 165263# 20/40, 15700# CRC 20/40, Slick Water			4055.00	
6,938.0	6,025.3	88.5					Frac	10/30/2013	8,157.0	8,241.0	8796# 40/70, 165522# 20/40, 17420# CRC 20/40, Slick Water			4081.00	
7,064.0	6,026.1	88.8					Frac	10/30/2013	8,321.0	8,404.0	9000# 40/70, 165000# 20/40, 16000# CRC 20/40, Slick Water			4074.00	
7,211.9	6,026.6	88.9					Frac	10/30/2013	8,471.0	8,554.0	9000# 40/70, 162500# 20/40, 16000# CRC 20/40, Slick Water			4079.00	
7,273.0	6,026.6	90.0					Frac	10/29/2013	8,629.0	8,694.0	9000# 40/70, 165000# 20/40, 16000# CRC 20/40, Slick Water			4084.00	
7,403.9	6,026.5	90.0					Frac	10/29/2013	8,755.0	8,824.0	8964# 40/70, 166246# 20/40, 16500# CRC 20/40, Slick Water			4101.00	
7,526.9	6,026.0	88.8					Frac	10/29/2013	8,893.0	8,976.0	8831# 40/70, 166206# 20/40, 16635# CRC 20/40, Slick Water			4087.00	
7,691.9	6,027.2	88.8					Frac	10/29/2013	9,047.0	9,118.0	8682# 40/70, 164280# 20/40, 15500# CRC 20/40, Slick Water			4096.00	
7,828.1	6,031.5	91.6					Frac	10/29/2013	9,196.0	9,285.0	9055# 40/70, 164482# 20/40, 16000# CRC 20/40, Slick Water			4114.00	
7,978.0	6,037.4	88.5					Frac	10/28/2013	9,361.0	9,443.0	9165# 40/70, 164335# 20/40, 15500# CRC 20/40, Slick Water			4053.00	
8,069.9	6,038.7	88.8					Frac	10/28/2013	9,523.0	9,586.0	8766# 40/70, 165845# 20/40, 16000# CRC 20/40, Slick Water			4129.00	
8,236.9	6,038.2	90.6					Frac	10/28/2013	9,668.0	9,743.0	9035# 40/70, 166500# 20/40, 16000# CRC 20/40, Slick Water			4132.00	
8,363.8	6,037.0	90.3					Frac	10/27/2013	9,814.0	9,884.0	8958# 40/70, 164685# 20/40, 16000# CRC 20/40, Slick Water			4148.00	
8,511.2	6,037.5	88.1					Frac	10/27/2013	9,966.0	10,054.0	9135# 40/70, 166800# 20/40, 16300# CRC 20/40, Slick Water			4147.00	
8,632.9	6,040.0	88.0													
8,754.9	6,042.8	88.6													
8,824.1	6,043.3	88.8													
8,972.1	6,045.0	88.3													
9,074.1	6,046.9	88.8													
9,238.8	6,046.3	88.5													
9,365.2	6,046.9	91.2													
9,523.0	6,043.1	91.1													
9,586.0	6,042.3	90.6													
9,738.8	6,043.0	88.8													
9,841.9	6,045.5	88.4													
10,007.9	6,049.0	88.7													
10,140.1	6,047.3	91.2													
10,306.1	6,044.2	88.9													
10,383.9	6,042.9	91.1													
10,521.0	6,041.3	90.0													
10,649.9	6,042.2	88.4													
10,798.9	6,043.6	88.5													
10,912.1	6,044.8	88.5													
11,068.9	6,046.4	88.1													
11,143.0	6,047.8	88.8													
11,277.9	6,048.9	88.8													
11,400.9	6,050.2	88.9													
11,564.0	6,050.3	88.8													
11,693.9	6,050.1	88.3													
11,860.9	6,048.8	88.5													
11,950.1	6,048.0	90.5													
12,111.9	6,046.2	88.8													
12,250.0	6,044.6	88.7													
12,353.7	6,043.4	88.6													
12,414.0	6,042.8	90.5													



Lateral/Horizontal - Original Hole, 2/19/2014 3:51:16 PM				Stim/Treat Stages								
MD (ftKB)	TV D (ftKB)	n cl (° B)		Stage Type	Start Date	Top (ftKB)	Btm (ftKB)	Stim/Treat Fluid	Vol Clean Pump (bbl)			
			Vertical schematic (actual)	Logs								
96.8	96.8	0.7		Frac	10/27/2013	10,136.0	10,224.0	9034# 40/70, 165195# 20/40, 15268# CRC 20/40, Slick Water	4162.00			
1,591.9	1,591.7	1.1		Frac	10/27/2013	10,306.0	10,384.0	8985# 40/70, 162793# 20/40, 15000# CRC 20/40, Slick Water	4186.00			
3,271.0	3,270.7	1.1		Frac	10/27/2013	10,456.0	10,525.0	8866# 40/70, 163862# 20/40, 16538# CRC 20/40, Slick Water	4163.00			
4,281.8	4,281.0	1.2		Frac	10/27/2013	10,622.0	10,688.0	8984# 40/70, 164300# 20/40, 15600# CRC 20/40, Slick Water	4213.00			
4,825.5	4,824.3	2.4		Frac	10/26/2013	10,764.0	10,838.0	9100# 40/70, 165531# 20/40, 15500# CRC 20/40, Slick Water	4238.00			
4,887.5	4,886.3	1.4		Frac	10/26/2013	10,908.0	10,988.0	9080# 40/70, 168000# 20/40, 16000# CRC 20/40, Slick Water	4230.00			
6,008.5	5,620.9	80.5		Frac	10/26/2013	11,069.0	11,143.0	8783# 40/70, 166792# 20/40, 14500# CRC 20/40, Slick Water	4280.00			
6,261.2	5,633.0	91.1		Frac	10/26/2013	11,214.0	11,282.0	8714# 40/70, 165975# 20/40, 15000# CRC 20/40, Slick Water	4731.00			
6,374.0	5,630.6	91.2		Frac	10/26/2013	11,358.0	11,444.0	8932# 40/70, 165494# 20/40, 15381# CRC 20/40, Slick Water	4233.00			
6,496.1	5,623.5	80.5		Frac	10/26/2013	11,525.0	11,611.0	9089# 40/70, 164000# 20/40, 16100# CRC 20/40, Slick Water	4215.00			
6,553.1	5,625.4	90.3		Frac	10/25/2013	11,690.0	11,779.0	9500# 40/70, 163000# 20/40, 16000# CRC 20/40, Slick Water	4234.00			
6,688.0	5,627.3	91.5		Frac	10/25/2013	11,861.0	11,950.0	9017# 40/70, 165089# 20/40, 15500# CRC 20/40, Slick Water	4284.00			
6,797.9	5,625.1	90.8		Frac	10/25/2013	12,026.0	12,116.0	9520# 40/70, 161460# 20/40, 16200# CRC 20/40, Slick Water	4388.00			
6,938.0	5,625.3	89.5		Frac	10/25/2013	12,220.0	12,290.0	8493# 40/70, 129942# 20/40, 0# CRC 20/40, Slick Water	10176.00			
7,064.0	5,626.1	89.8										
7,211.9	5,628.8	89.9										
7,273.0	5,626.6	90.0										
7,403.9	5,628.5	90.0										
7,526.9	5,628.8	89.8										
7,691.9	5,627.2	89.9										
7,828.1	5,631.5	91.4										
7,978.0	5,627.4	89.5										
8,069.9	5,628.7	89.8										
8,236.9	5,638.2	90.4										
8,363.8	5,627.0	90.3										
8,511.2	5,627.5	90.1										
8,632.9	5,640.6	89.0										
8,754.9	5,642.8	89.6										
8,824.1	5,643.3	89.8										
8,972.1	5,645.0	89.3										
9,074.1	5,645.9	89.8										
9,238.8	5,646.3	89.5										
9,365.2	5,645.9	91.2										
9,523.0	5,643.1	91.1										
9,586.0	5,642.3	90.8										
9,738.8	5,643.0	89.9										
9,841.9	5,645.5	89.4										
10,007.9	5,648.0	89.7										
10,140.1	5,647.3	91.2										
10,306.1	5,644.2	90.8										
10,383.9	5,643.9	91.1										
10,521.0	5,641.3	90.0										
10,649.9	5,642.2	89.4										
10,798.9	5,640.6	89.5										
10,912.1	5,644.6	89.5										
11,068.9	5,646.4	89.1										
11,143.0	5,647.6	89.8										
11,277.9	5,646.9	89.8										
11,400.9	5,650.2	89.9										
11,564.0	5,650.3	89.8										
11,693.9	5,650.1	89.3										
11,860.9	5,648.8	90.5										
11,950.1	5,646.0	90.5										
12,111.9	5,646.2	89.8										
12,250.0	5,644.6	90.7										
12,353.7	5,643.4	90.4										
12,414.0	5,642.8	90.0										
Tubing - Production set at 4,833.8ftKB on 1/25/2014 15:12												
Set Depth (ftKB)		Comment		Run Date		Pull Date						
4,833.8				1/25/2014								
Item Des		OD (in)		ID (in)		Len (ft)		Top (ftKB)		Btm (ftKB)		
Tubing		2 7/8		2.441		1,515.60		0.0		1,515.6		
Mandrel - side pocket		2 7/8				4.05		1,515.6		1,519.7		
Tubing		2 7/8		2.441		1,060.91		1,519.7		2,580.6		
Mandrel - side pocket		2 7/8				4.05		2,580.6		2,584.6		
Tubing		2 7/8		2.441		686.47		2,584.6		3,271.1		
Mandrel - side pocket		2 7/8				4.05		3,271.1		3,275.1		
Tubing		2 7/8		2.441		530.46		3,275.1		3,805.6		
Mandrel - side pocket		2 7/8				4.05		3,805.6		3,809.6		
Tubing		2 7/8		2.441		468.05		3,809.6		4,277.7		
Mandrel - side pocket		2 7/8				4.05		4,277.7		4,281.7		
Tubing		2 7/8		2.441		499.25		4,281.7		4,781.0		
Mandrel - side pocket		2 7/8				4.05		4,781.0		4,785.0		
Tubing		2 7/8		2.441		31.20		4,785.0		4,816.2		
Cup Seating Nipple		2 7/8				1.10		4,816.2		4,817.3		
Tubing Sub		2 7/8				8.00		4,817.3		4,825.3		
AS-1 Packer		2 7/8				8.00		4,825.3		4,833.3		
Bar Collar		2 7/8				0.50		4,833.3		4,833.8		
Rod Strings												
<des> on <dtmrun>												
Rod Description					Run Date		Pull Date					
Item Des					OD (in)		Len (ft)		Top (ftKB)		Btm (ftKB)	
Other Strings												
Set Depth (ftKB)		Comment		Run Date		Pull Date						
Item Des		OD (in)		Len (ft)		Top (ftKB)		Btm (ftKB)				
Other In Hole												
Des		OD (in)		Run Date		Pull Date		Top (ftKB)		Btm (ftKB)		
CFP		4		11/1/2013		11/5/2013		6,348.0		6,350.0		
CFP		4		11/1/2013		11/5/2013		6,473.0		6,475.0		

Page 7/7