

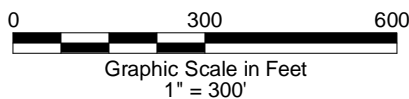
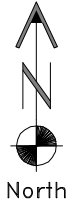
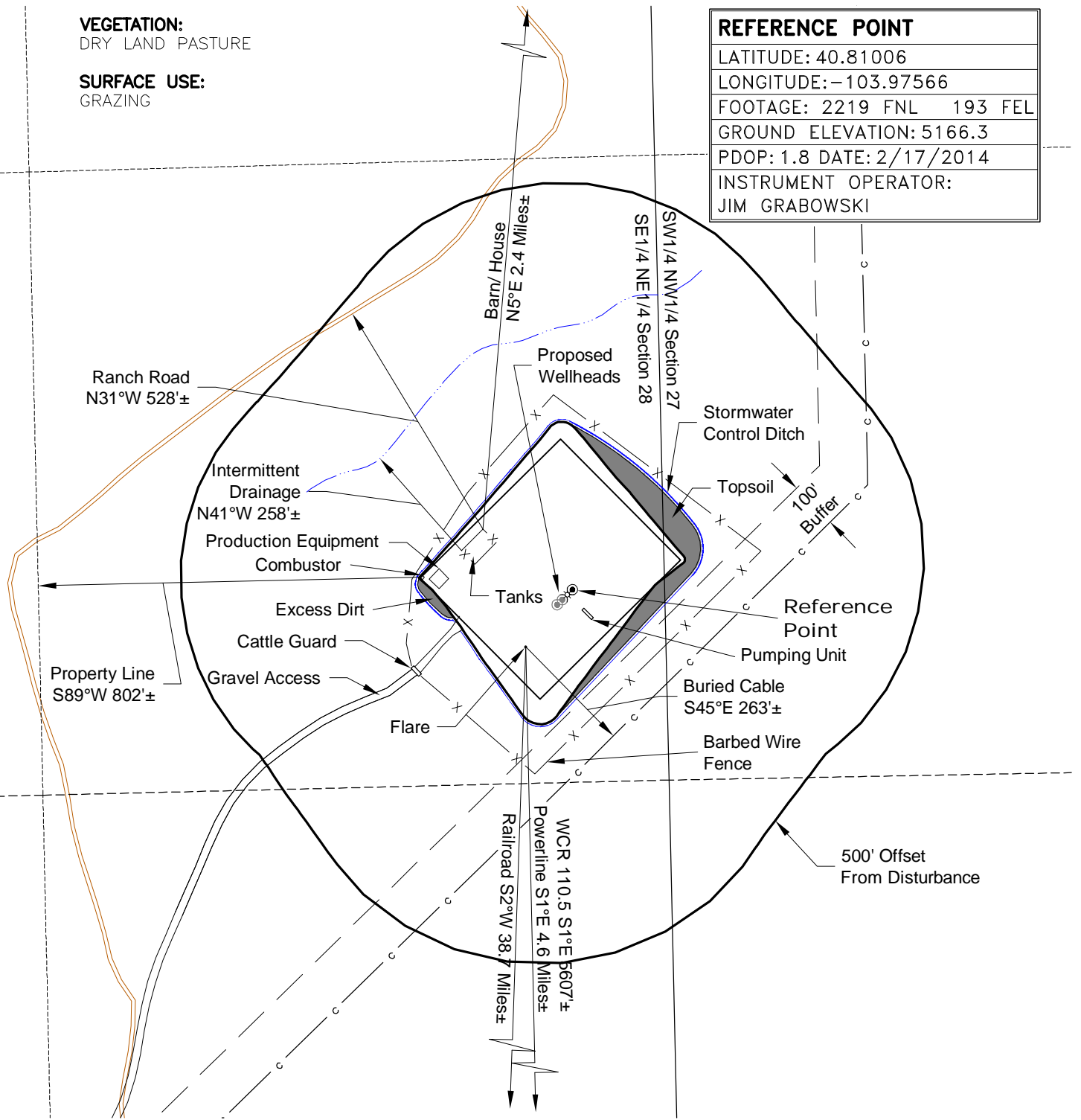
# LOCATION DRAWING

**VEGETATION:**  
DRY LAND PASTURE

**SURFACE USE:**  
GRAZING

## REFERENCE POINT

|                                       |
|---------------------------------------|
| LATITUDE: 40.81006                    |
| LONGITUDE: -103.97566                 |
| FOOTAGE: 2219 FNL 193 FEL             |
| GROUND ELEVATION: 5166.3              |
| PDOP: 1.8 DATE: 2/17/2014             |
| INSTRUMENT OPERATOR:<br>JIM GRABOWSKI |



LAND SURVEYING AND MAPPING  
LAFAYETTE - WINTER PARK  
Ph 303 666 0379 Fx 303 665 6320

**CARRIZO NIOBRARA LLC**  
**NELSON RANCHES 1-27-10-59 PAD**

**SE 1/4 NE 1/4 SECTION 28 T10N R59W**  
**6th PM WELD COUNTY COLORADO**

2/19/14