

**PROPOSED LOCATION:
PROSPER FARMS #4-65 11-12 1H**

T4S

T5S

**R
65
W**

**R
64
W**

LEGEND:

PROPOSED LOCATION



ConocoPhillips Company

**PROSPER FARMS #4-65 11-12 1H
SECTION 11, T4S, R65W, 6th P.M.
660' FNL 350' FWL**



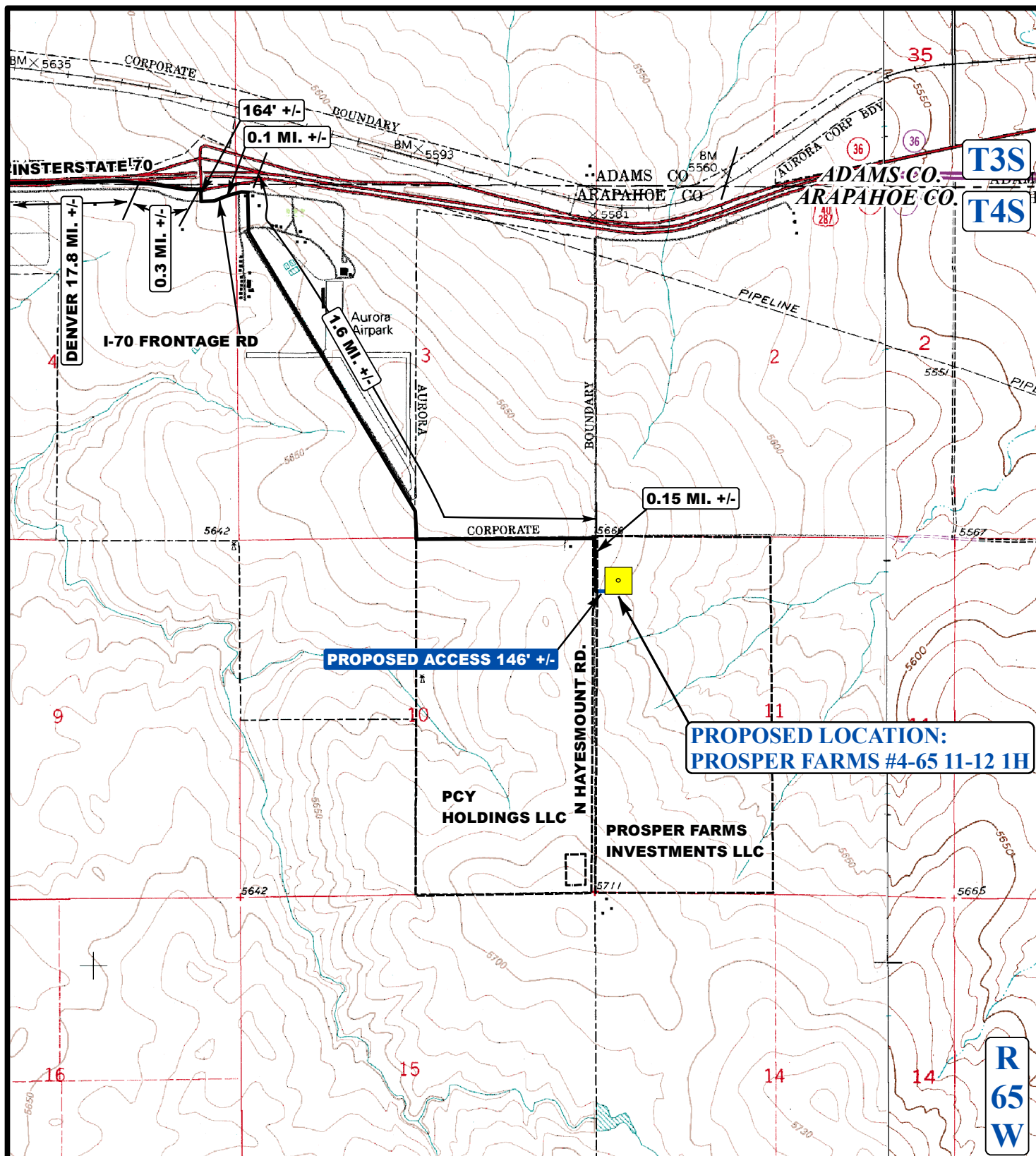
Uintah Engineering & Land Surveying
85 South 200 East Vernal, Utah 84078
(435) 789-1017 * FAX (435) 789-1813

**ACCESS ROAD
MAP**

08 22 13
MONTH DAY YEAR

SCALE: 1:100,000 DRAWN BY: J.L.G. REV: 09-10-13 J.L.H.





LEGEND:

EXISTING ROADS
 PROPOSED ACCESS ROAD



ConocoPhillips Company

PROSPER FARMS #4-65 11-12 1H
SECTION 11, T4S, R65W, 6th P.M.
660' FNL 350' FWL



Uintah Engineering & Land Surveying
 85 South 200 East Vernal, Utah 84078
 (435) 789-1017 * FAX (435) 789-1813

ACCESS ROAD
MAP

08 **22** **13**
 MONTH DAY YEAR

SCALE: 1"=2000' DRAWN BY: J.L.G. REVISED: 10-1-13

B
 TOPO