



Digital Drilling Data
Systems, LLC

GeologPlot

(Scale: 5":100' (100'))

Company: Encana Oil & Gas

State: CO

Well: Flanigan 1D-6H

County: Weld

Field: Wattenberg

Country: US

Well ID: 05-123-35692-00

Job Number: 125511

Location: NWNNE S6-T1N-R64W

Elev KB: 5042

Operator 1: Cathedral Energy Services

Elev DF: 13

Operator 2: Richie Moulton

Elev GL: 5029

Comment 1:

Comment 2:

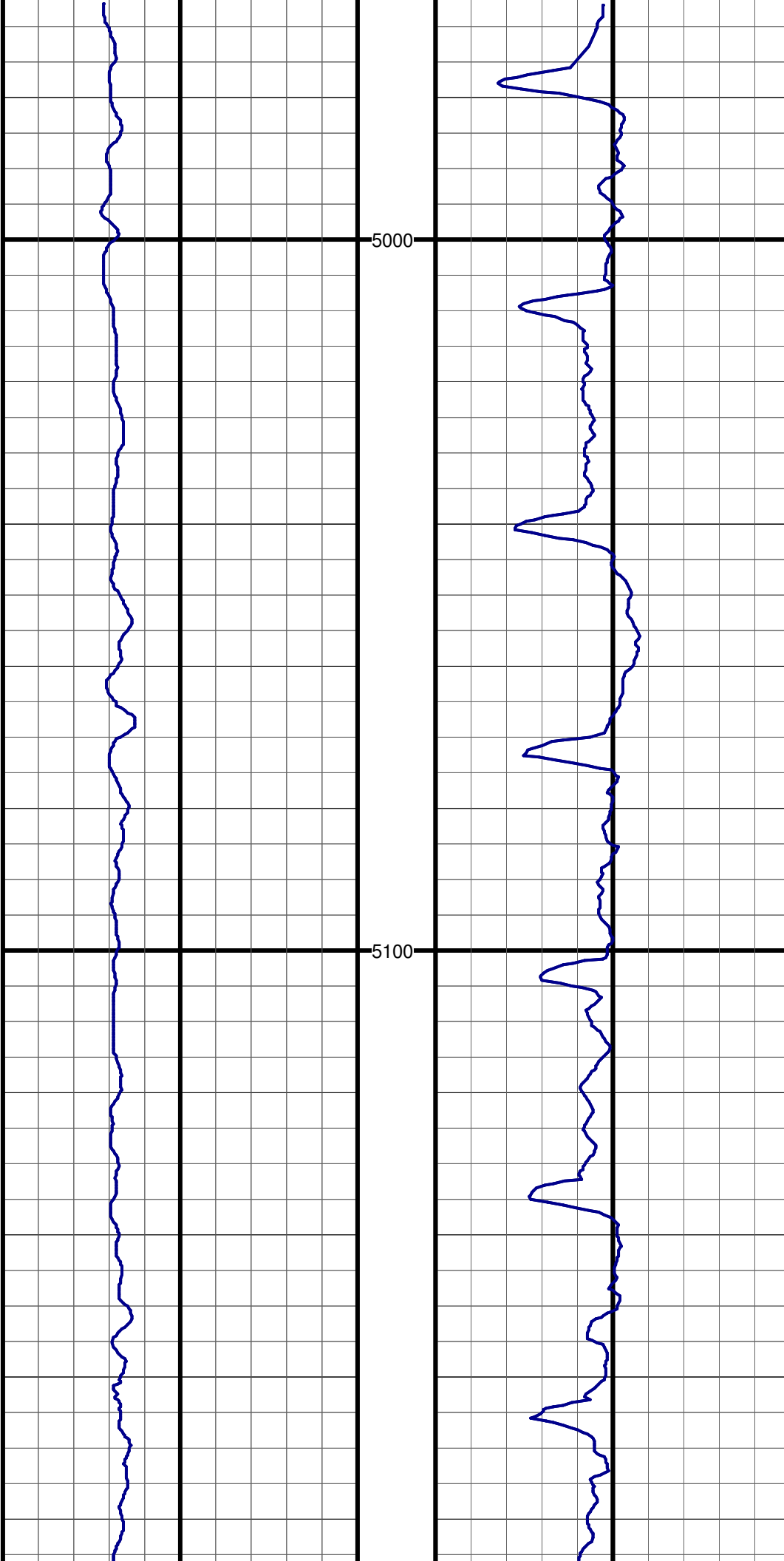
Comment 3:

Comment 4:

Comment 5:

Hole Data			Casing Record		
Size	From	To	Size	From	To
12.25	90	1134	9.625	0	1318
8.75	1134	7528	7.0	0	7518
6.1225	7528	11485	4.5	0	11465

Tool Run Data		Run #1	Run #2	Run #3	Run #4	Run #5
Tool S/N	1140	1140	1275			
Cal Factor	n/a	4.11	3.16			
Gamma Offset	n/a	37.04	35.4			
Start Depth	90	1134	7528			
Start Date	09/05/12	09/07/12	09/14/12			
Start Time	17:00	20:30	16:00			
End Depth	1134	7528	11485			
End Date	09/06/12	09/13/12	09/18/12			
End Time	01:00	02:00	6:00			

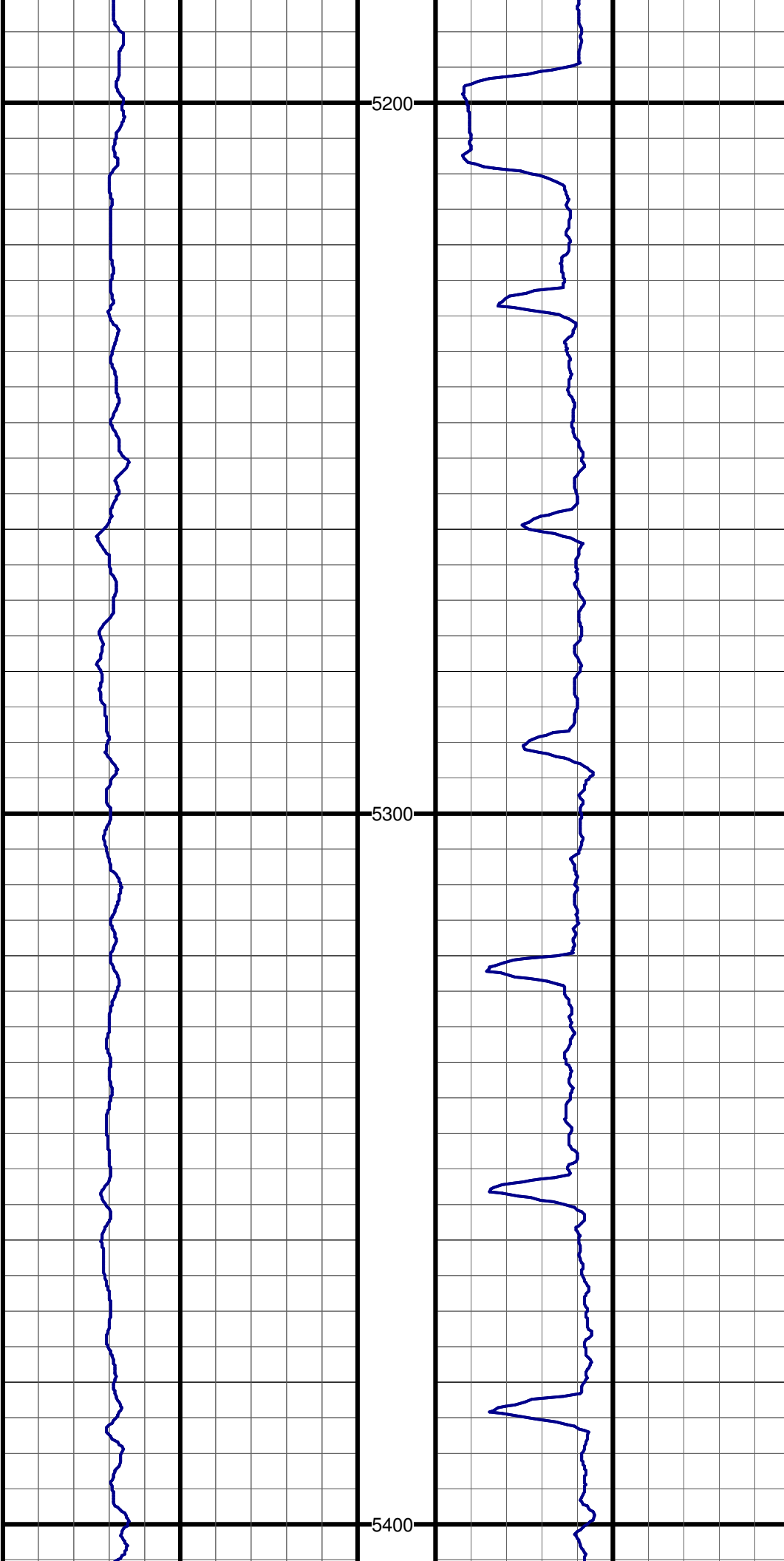


5000

5100

#54 TVD:5052.8 MD:5086.0 I:1.1 A:298.7 VS:-170.8

#55 TVD:5147.8 MD:5181.0 I:1.4 A:312.7 VS:-172.1



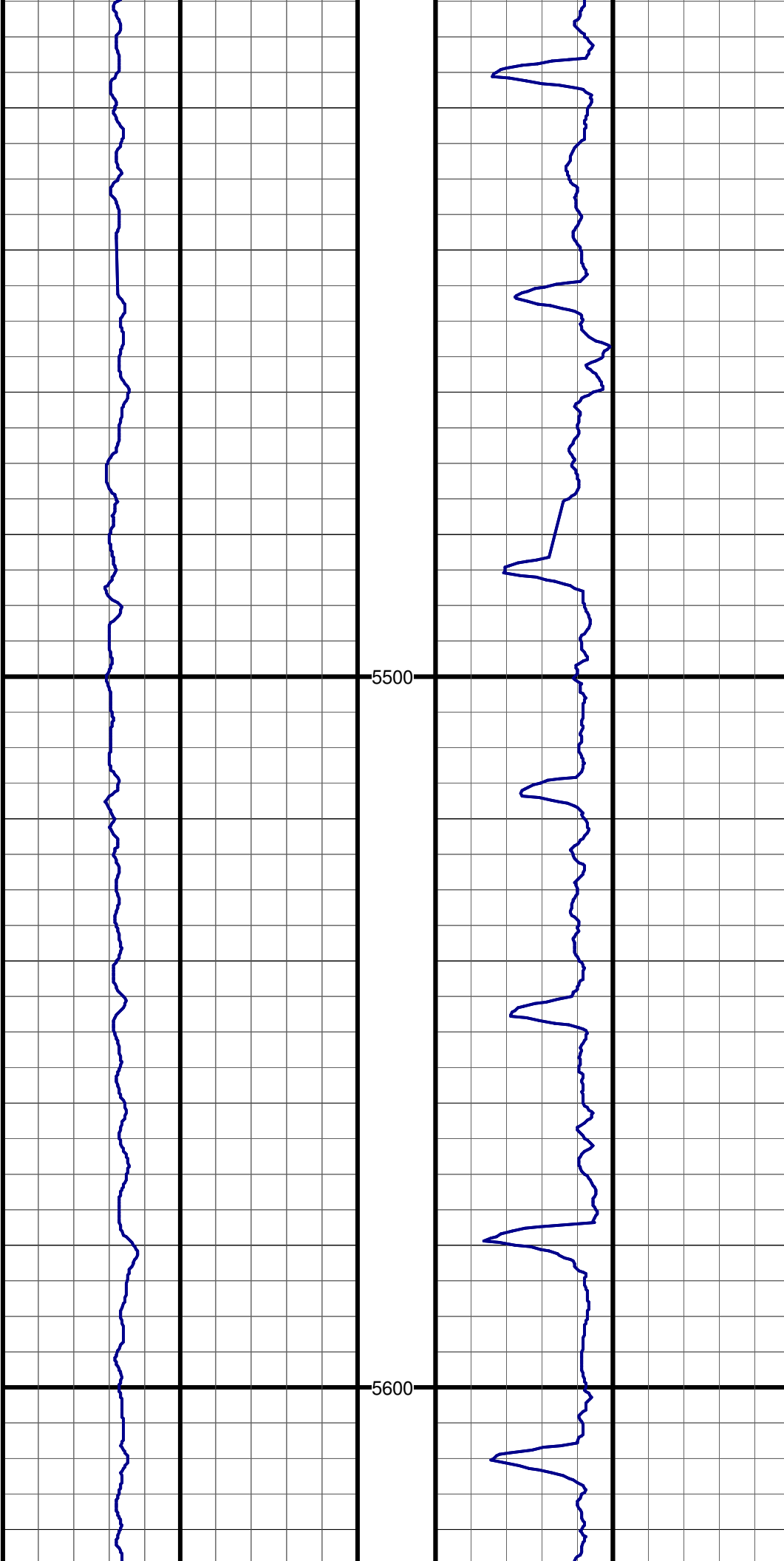
5200

#56 TVD:5242.7 MD:5276.0 I:1.3 A:19.4 VS:-173.9

5300

#57 TVD:5337.7 MD:5371.0 I:1.2 A:20.3 VS:-175.8

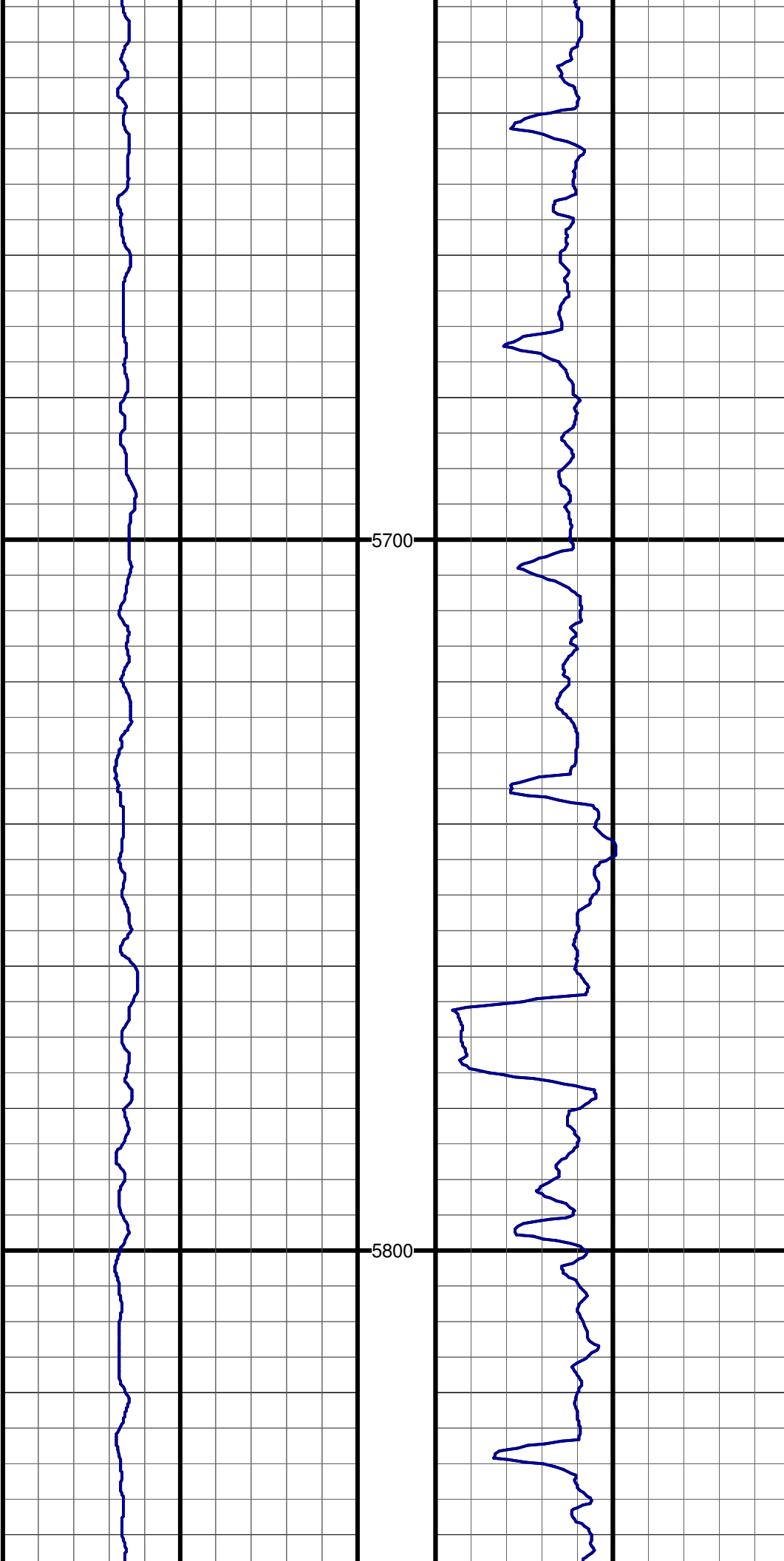
5400



#58 TVD:5432.7 MD:5466.0 I:0.7 A:28.7 VS:-177.2

#59 TVD:5527.7 MD:5561.0 I:0.4 A:298.0 VS:-177.9

#60 TVD:5622.7 MD:5656.0 I:0.6 A:229.4 VS:-177.7

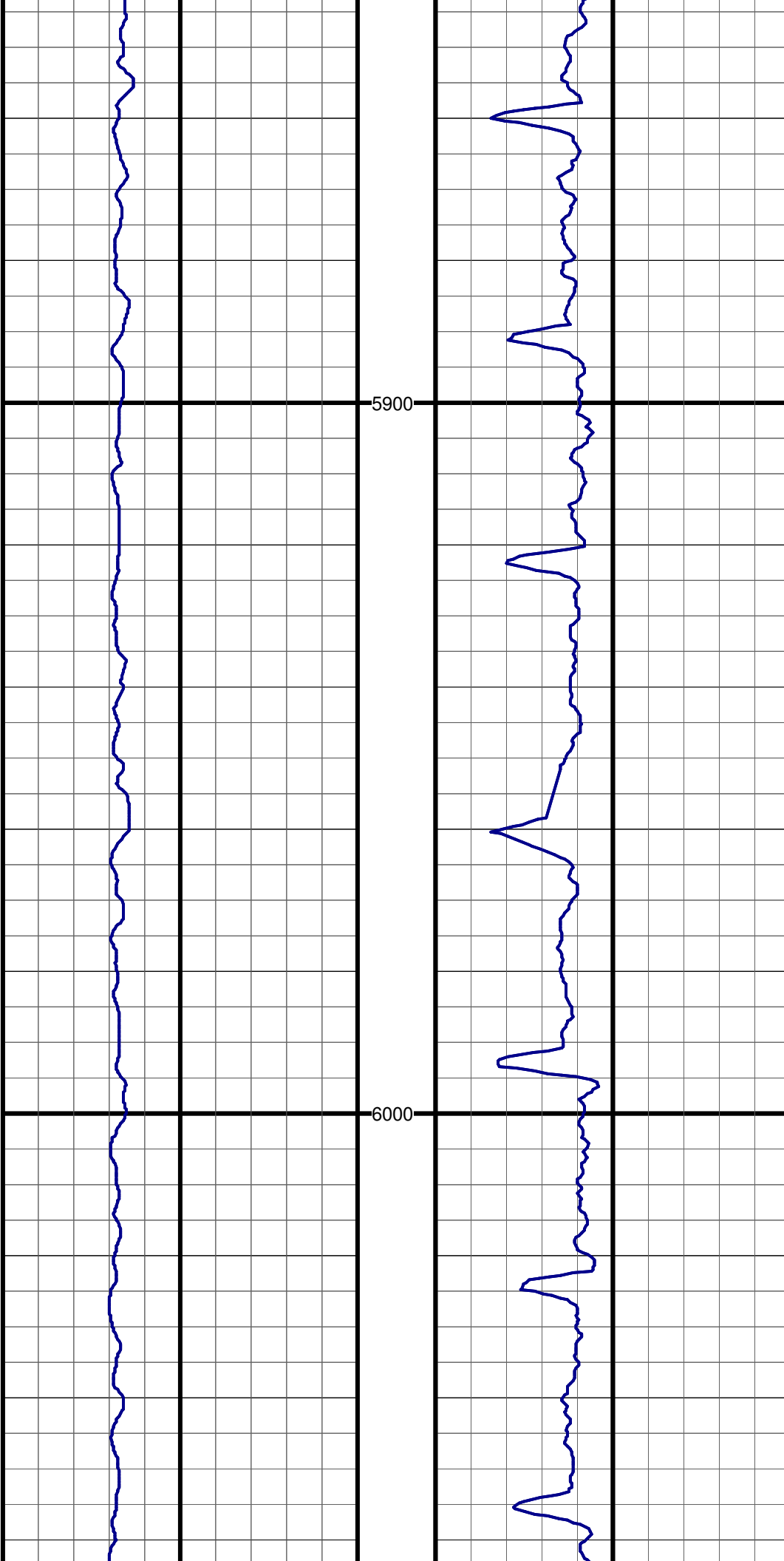


5700

#61 TVD:5717.7 MD:5751.0 I:1.0 A:221.1 VS:-176.8

5800

#62 TVD:5812.7 MD:5846.0 I:1.1 A:317.8 VS:-176.8

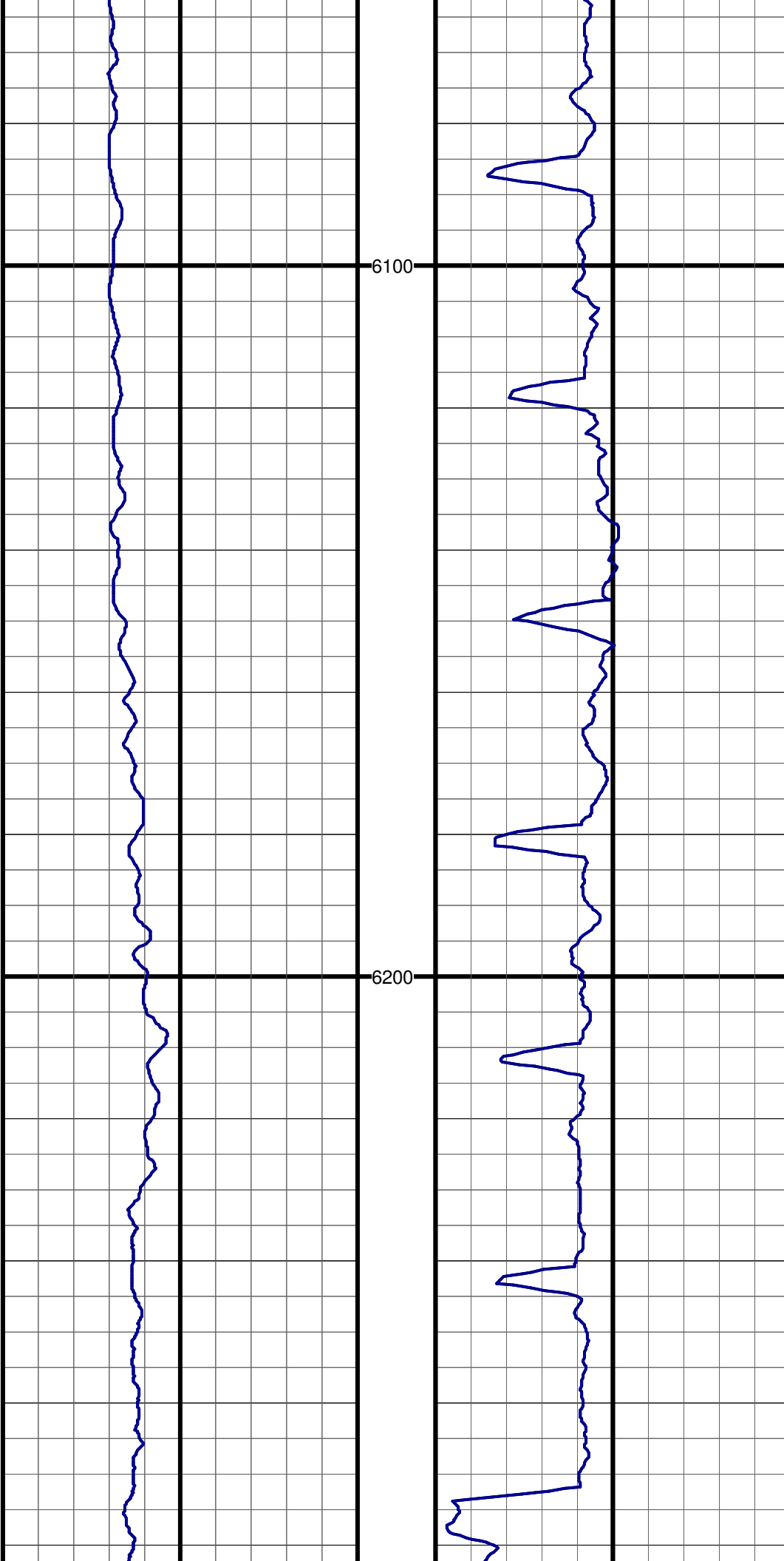


5900

#63 TVD:5907.7 MD:5941.0 I:1.2 A:335.0 VS:-178.4

6000

#64 TVD:6002.6 MD:6036.0 I:1.3 A:349.5 VS:-180.4

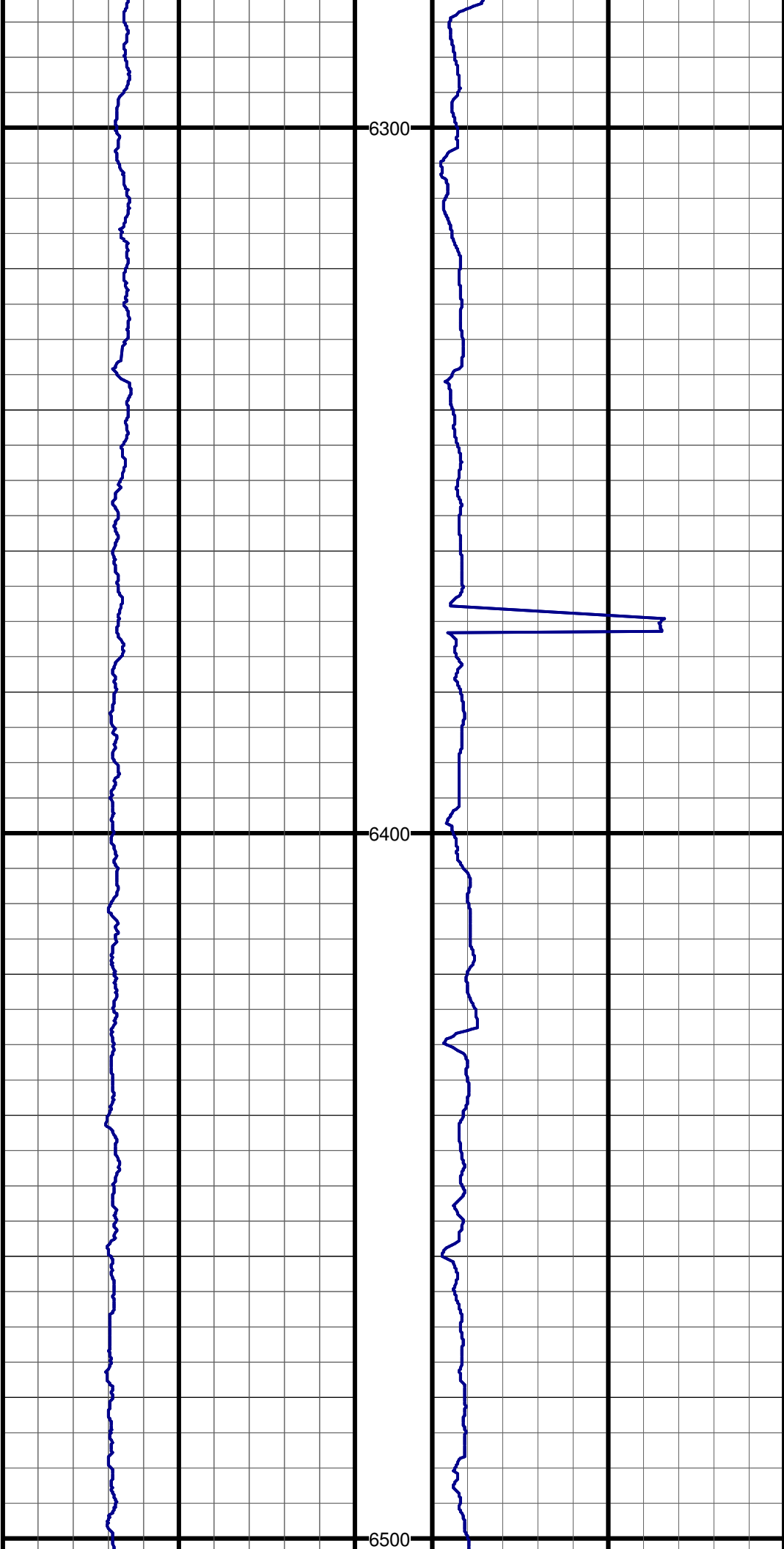


#65 TVD:6098.6 MD:6132.0 I:1.0 A:341.0 VS:-182.2

#66 TVD:6193.6 MD:6227.0 I:1.0 A:335.4 VS:-183.8

#67 TVD:6224.6 MD:6258.0 I:1.1 A:339.7 VS:-184.3

#68 TVD:6256.6 MD:6290.0 I:1.1 A:341.2 VS:-184.9



#69 TVD:6288.6 MD:6322.0 I:0.5 A:71.9 VS:-185.2

#70 TVD:6320.6 MD:6354.0 I:2.7 A:139.6 VS:-184.7

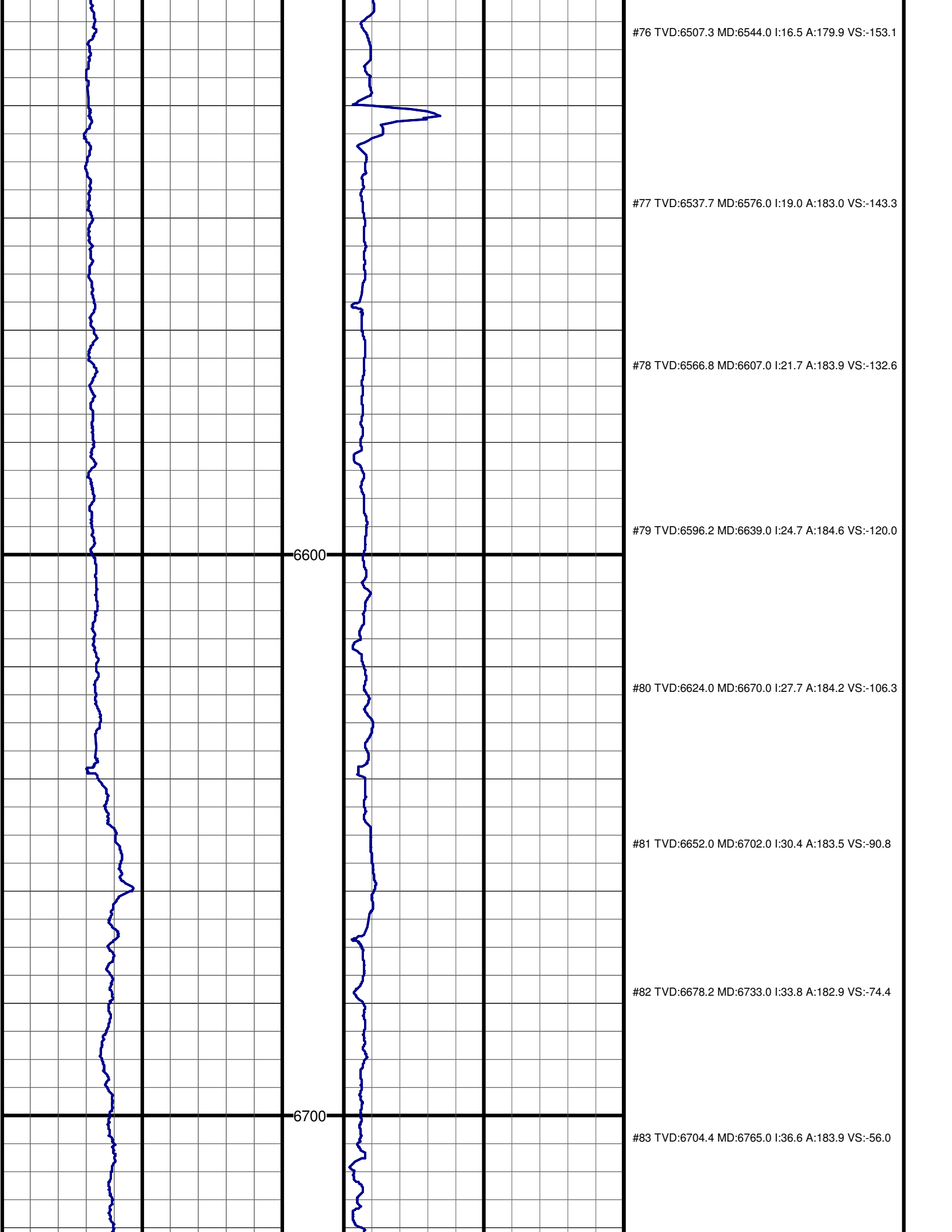
#71 TVD:6351.5 MD:6385.0 I:5.3 A:152.5 VS:-182.9

#72 TVD:6383.3 MD:6417.0 I:7.7 A:158.2 VS:-179.6

#73 TVD:6414.9 MD:6449.0 I:10.3 A:162.8 VS:-174.8

#74 TVD:6446.3 MD:6481.0 I:12.5 A:167.7 VS:-168.7

#75 TVD:6476.4 MD:6512.0 I:14.5 A:172.9 VS:-161.6



#76 TVD:6507.3 MD:6544.0 I:16.5 A:179.9 VS:-153.1

#77 TVD:6537.7 MD:6576.0 I:19.0 A:183.0 VS:-143.3

#78 TVD:6566.8 MD:6607.0 I:21.7 A:183.9 VS:-132.6

#79 TVD:6596.2 MD:6639.0 I:24.7 A:184.6 VS:-120.0

6600

#80 TVD:6624.0 MD:6670.0 I:27.7 A:184.2 VS:-106.3

#81 TVD:6652.0 MD:6702.0 I:30.4 A:183.5 VS:-90.8

#82 TVD:6678.2 MD:6733.0 I:33.8 A:182.9 VS:-74.4

6700

#83 TVD:6704.4 MD:6765.0 I:36.6 A:183.9 VS:-56.0

