



Digital Drilling
Systems, LLC

GeologPlot

(Scale: 5":100' (100'))

Company: Encana Oil & Gas

State: CO

Well: Flanigan 1D-6H

County: Weld

Field: Wattenberg

Country: US

Well ID: 05-123-35692-00

Job Number: 125511

Location: NWNE S6-T1N-R64W

Elev KB: 5042

Operator 1: Cathedral Energy Services

Elev DF: 13

Operator 2: Richie Moulton

Elev GL: 5029

Comment 1:

Comment 2:

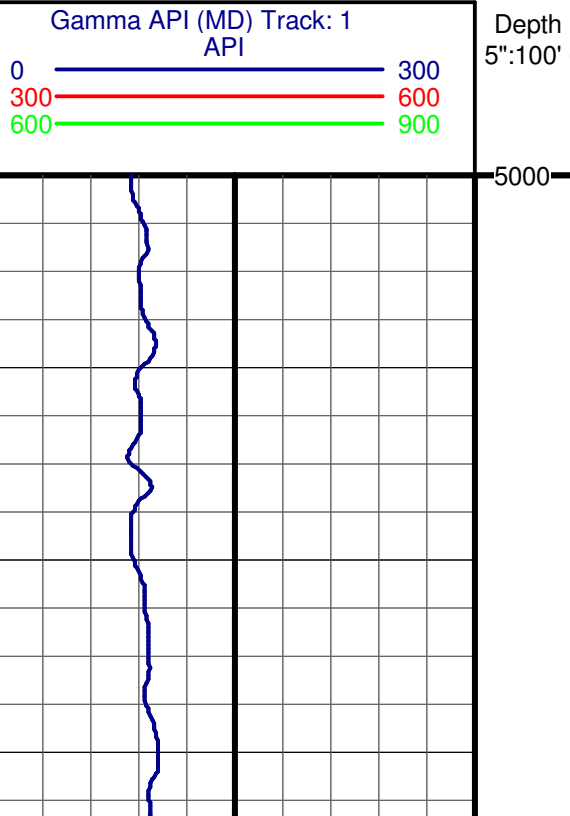
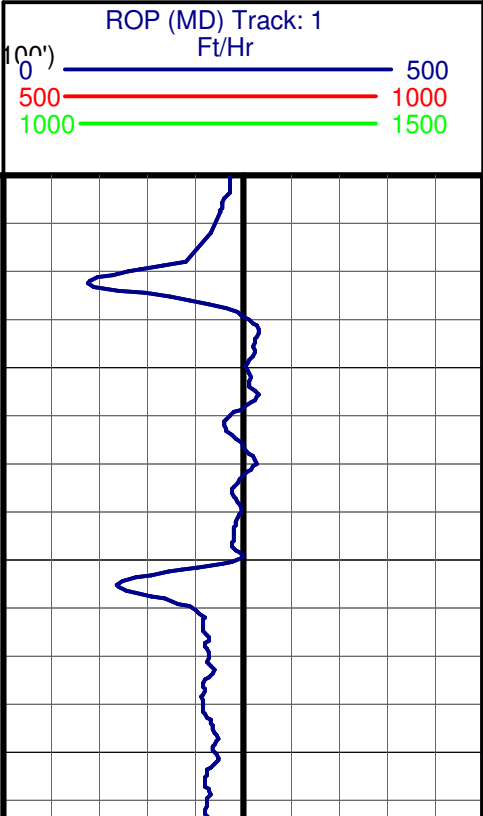
Comment 3:

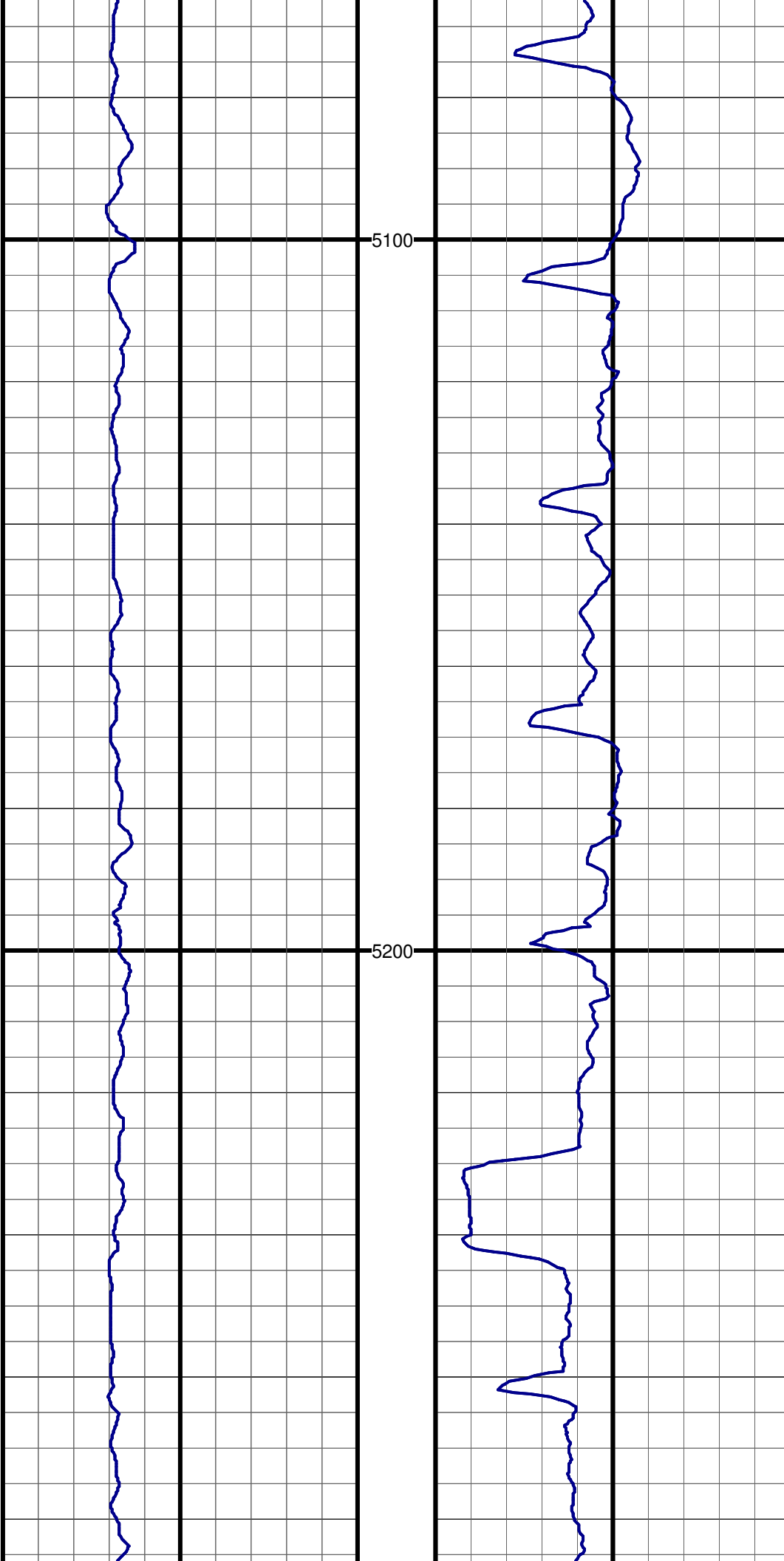
Comment 4:

Comment 5:

Hole Data			Casing Record		
Size	From	To	Size	From	To
12.25	90	1134	9.625	0	1318
8.75	1134	7528	7.0	0	7518
6.1225	7528	11485	4.5	0	11465

Tool Run Data	Run #1	Run #2	Run #3	Run #4	Run #5
Tool S/N	1140	1140	1275		
Cal Factor	n/a	4.11	3.16		
Gamma Offset	n/a	37.04	35.4		
Start Depth	90	1134	7528		
Start Date	09/05/12	09/07/12	09/14/12		
Start Time	17:00	20:30	16:00		
End Depth	1134	7528	11485		
End Date	09/06/12	09/13/12	09/18/12		
End Time	01:00	02:00	6:00		

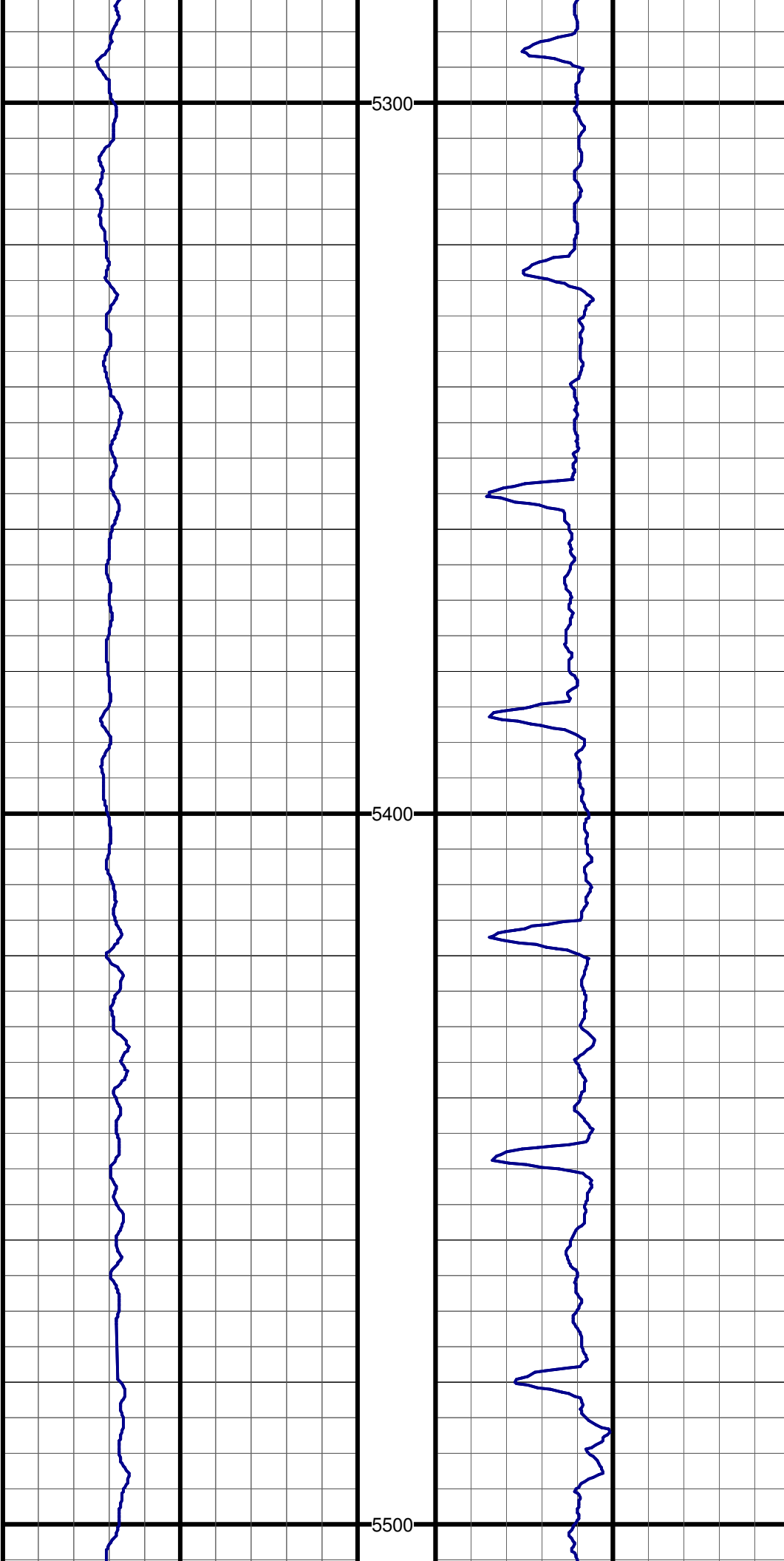




#54 MD:5086.0 TVD:5052.8 I:1.1 A:298.7 VS:-170.8

#55 MD:5181.0 TVD:5147.8 I:1.4 A:312.7 VS:-172.1

#56 MD:5276.0 TVD:5242.7 I:1.3 A:19.4 VS:-173.9



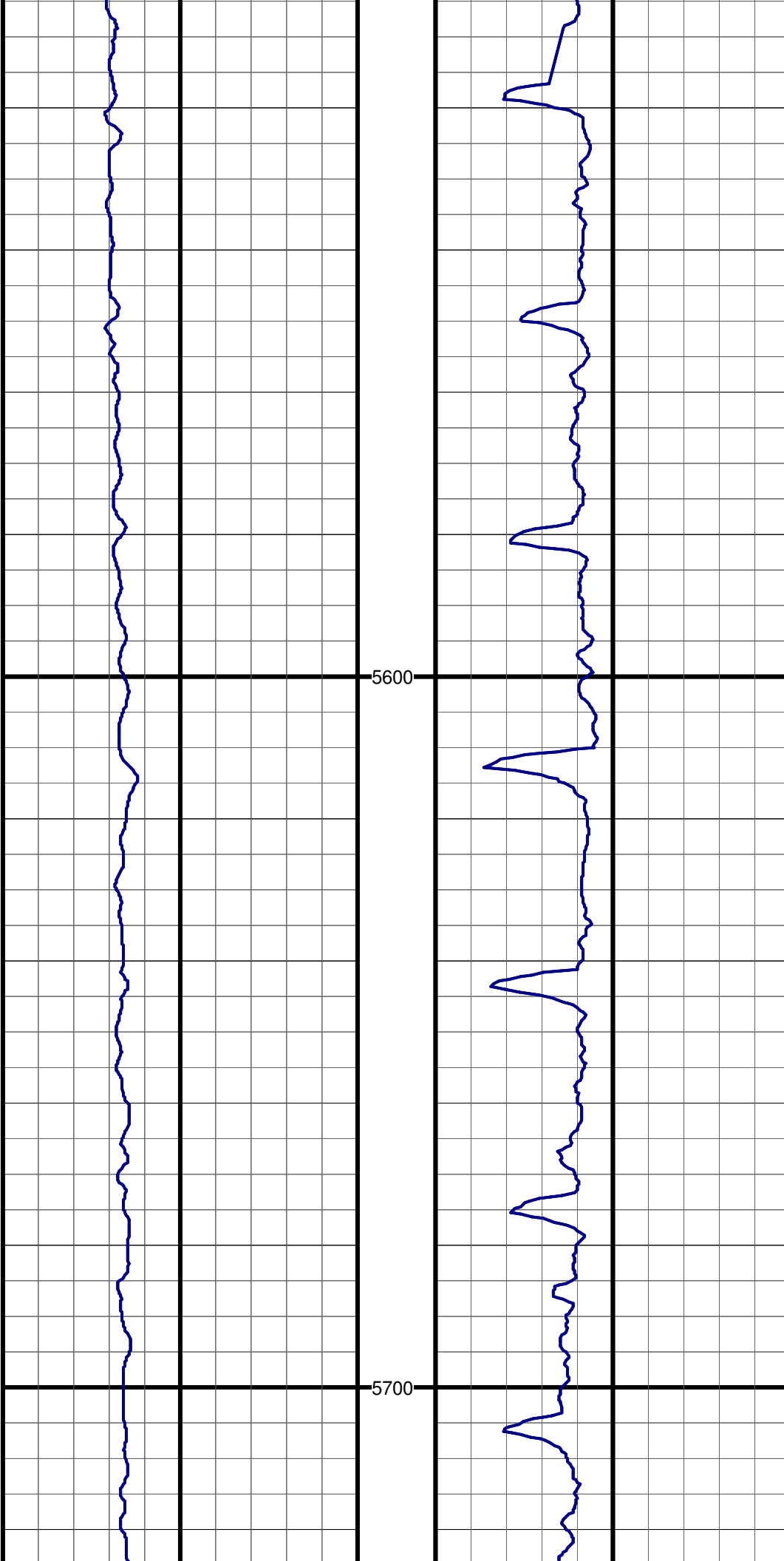
5300

5400

5500

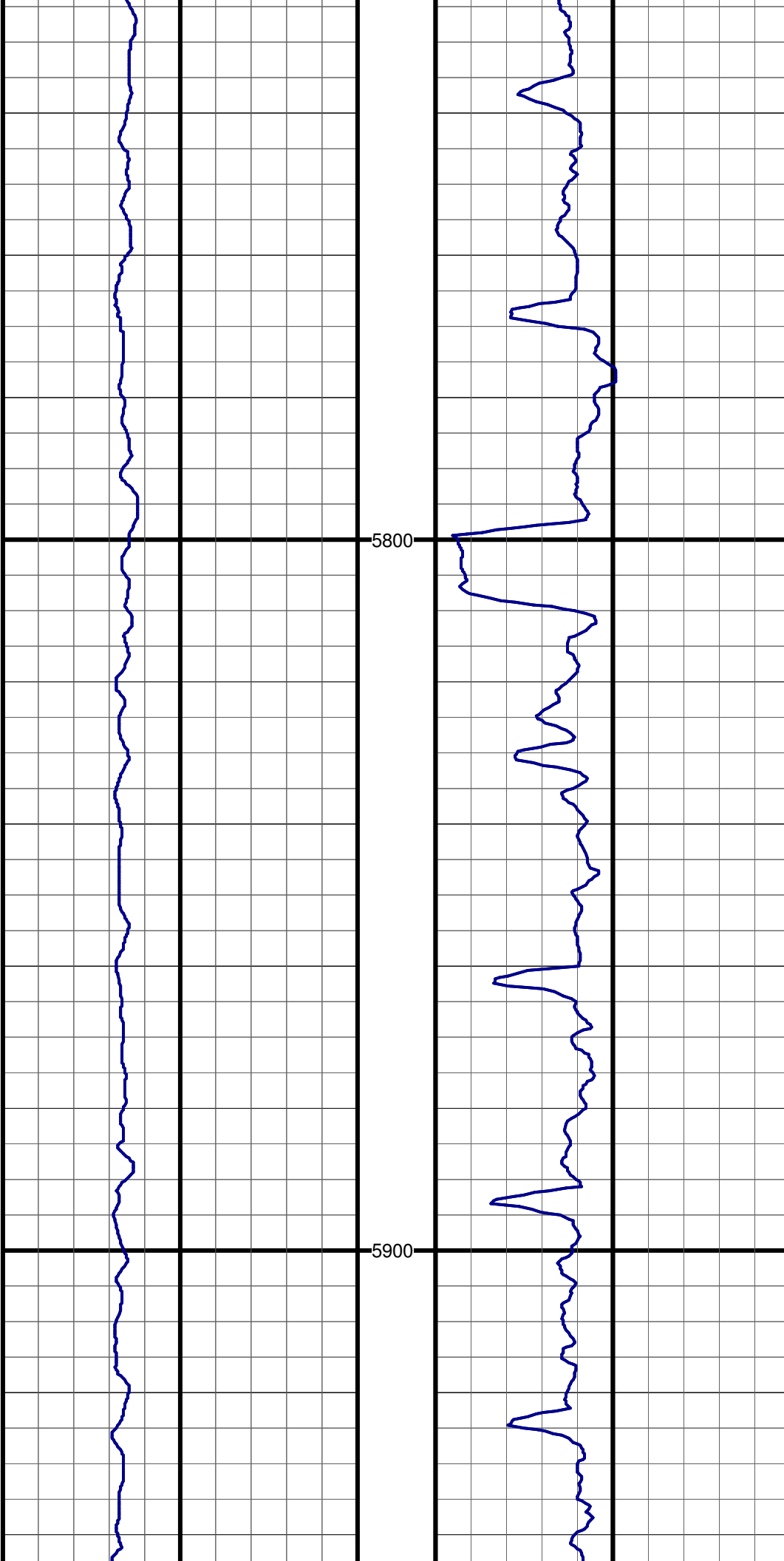
#57 MD:5371.0 TVD:5337.7 I:1.2 A:20.3 VS:-175.8

#58 MD:5466.0 TVD:5432.7 I:0.7 A:28.7 VS:-177.2



#59 MD:5561.0 TVD:5527.7 I:0.4 A:298.0 VS:-177.9

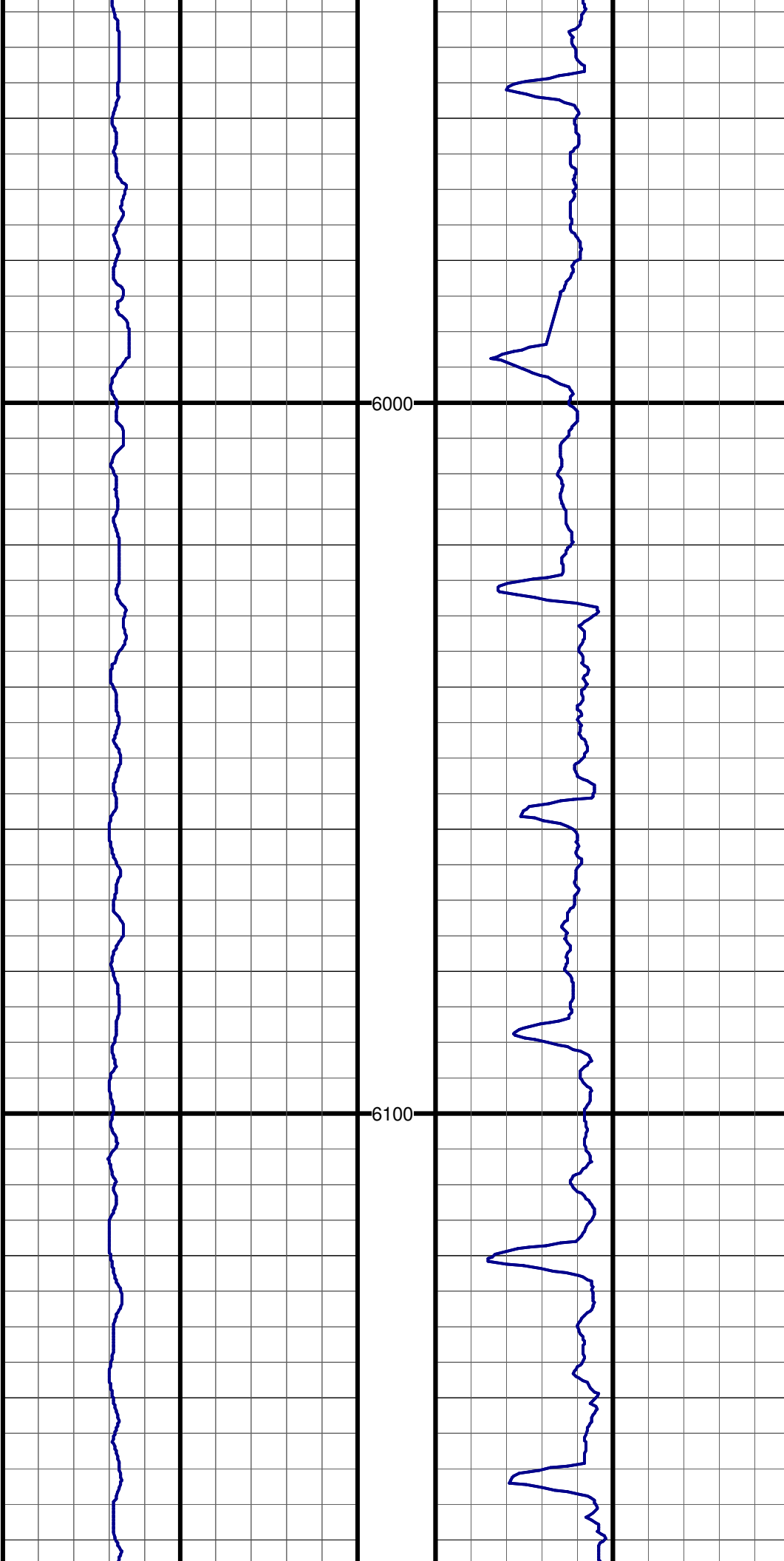
#60 MD:5656.0 TVD:5622.7 I:0.6 A:229.4 VS:-177.7



#61 MD:5751.0 TVD:5717.7 I:1.0 A:221.1 VS:-176.8

#62 MD:5846.0 TVD:5812.7 I:1.1 A:317.8 VS:-176.8

#63 MD:5941.0 TVD:5907.7 I:1.2 A:335.0 VS:-178.4

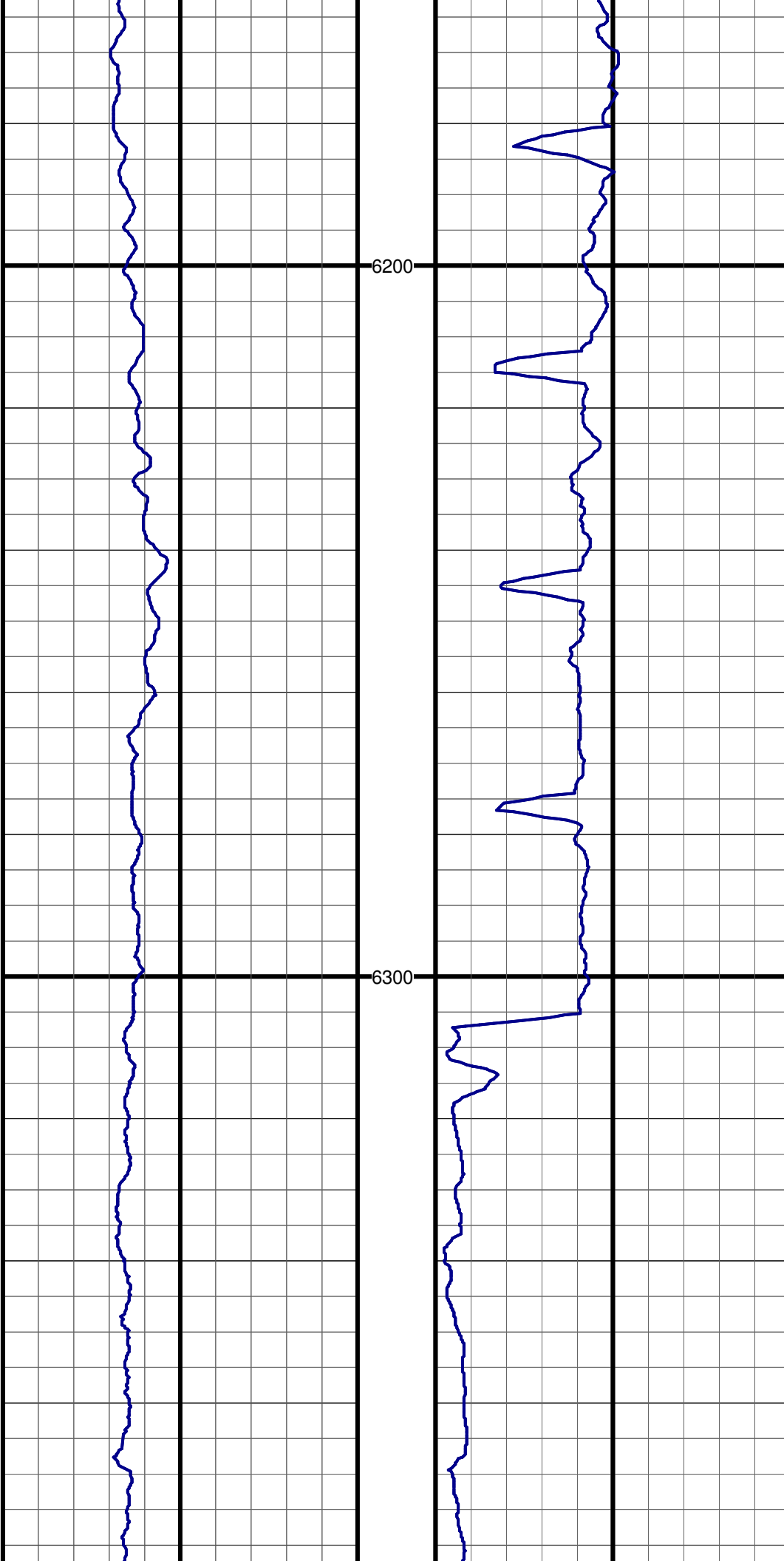


6000

6100

#64 MD:6036.0 TVD:6002.6 I:1.3 A:349.5 VS:-180.4

#65 MD:6132.0 TVD:6098.6 I:1.0 A:341.0 VS:-182.2



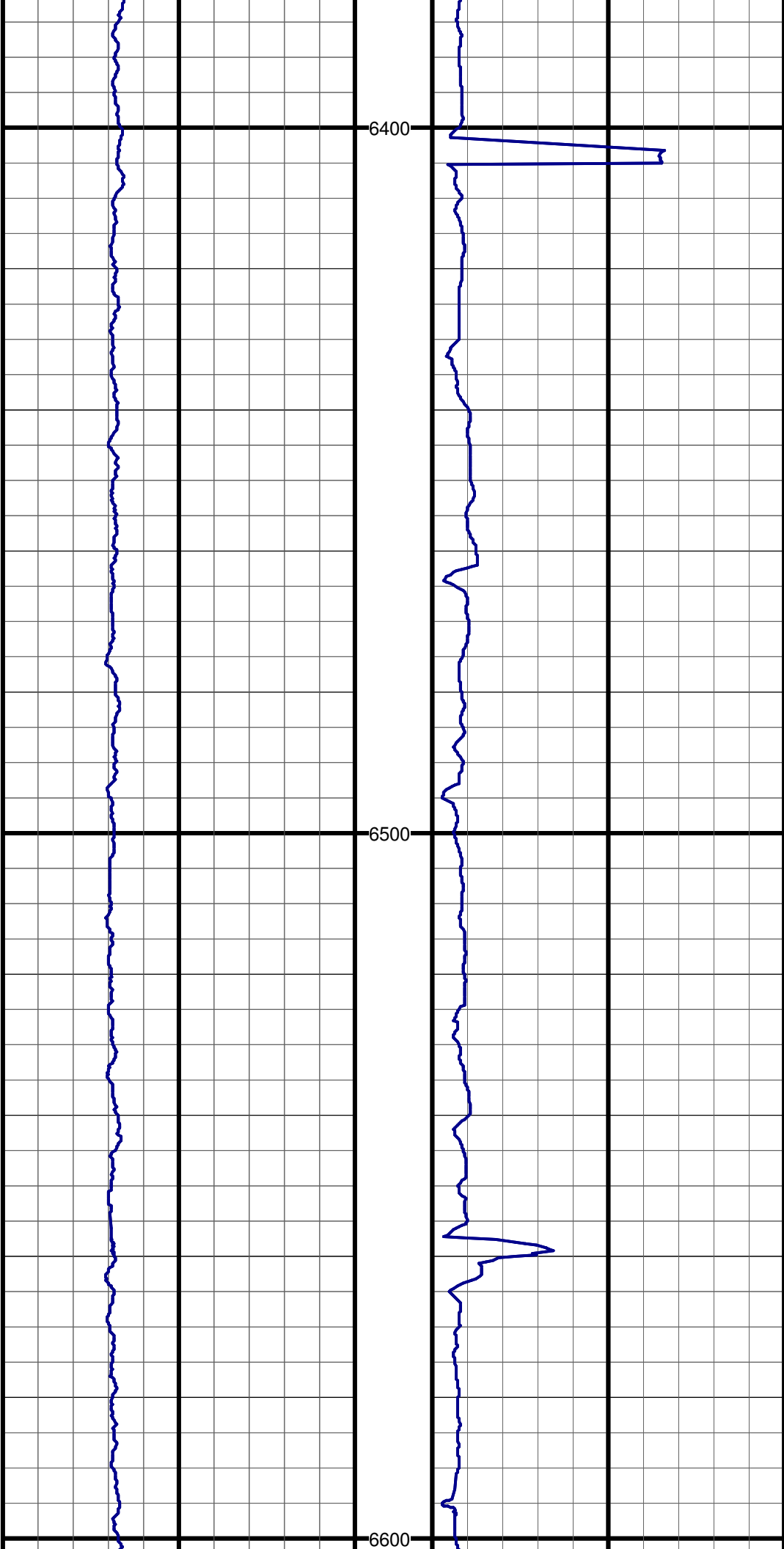
#66 MD:6227.0 TVD:6193.6 I:1.0 A:335.4 VS:-183.8

#67 MD:6258.0 TVD:6224.6 I:1.1 A:339.7 VS:-184.3

#68 MD:6290.0 TVD:6256.6 I:1.1 A:341.2 VS:-184.9

#69 MD:6322.0 TVD:6288.6 I:0.5 A:71.9 VS:-185.2

#70 MD:6354.0 TVD:6320.6 I:2.7 A:139.6 VS:-184.7



#71 MD:6385.0 TVD:6351.5 I:5.3 A:152.5 VS:-182.9

#72 MD:6417.0 TVD:6383.3 I:7.7 A:158.2 VS:-179.6

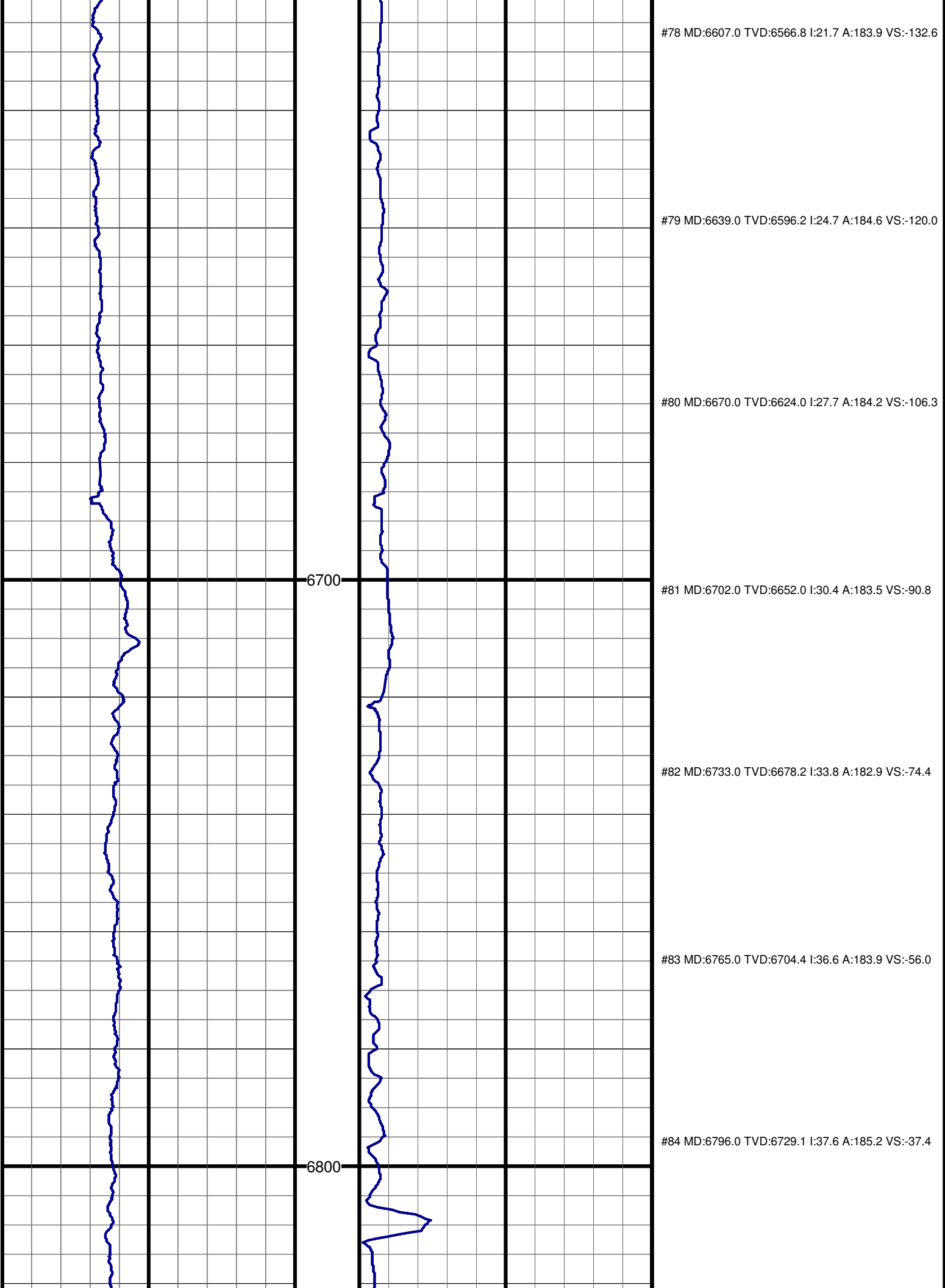
#73 MD:6449.0 TVD:6414.9 I:10.3 A:162.8 VS:-174.8

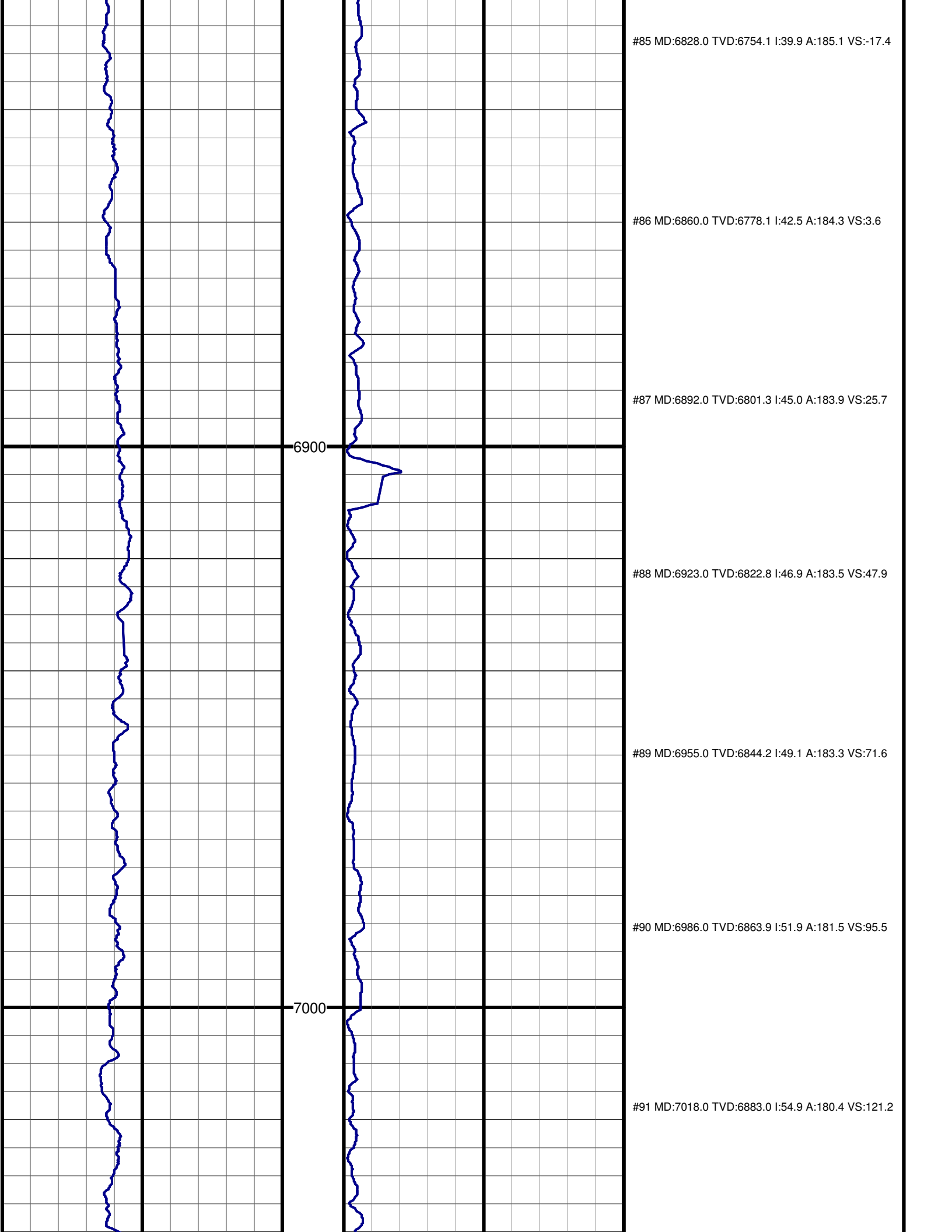
#74 MD:6481.0 TVD:6446.3 I:12.5 A:167.7 VS:-168.7

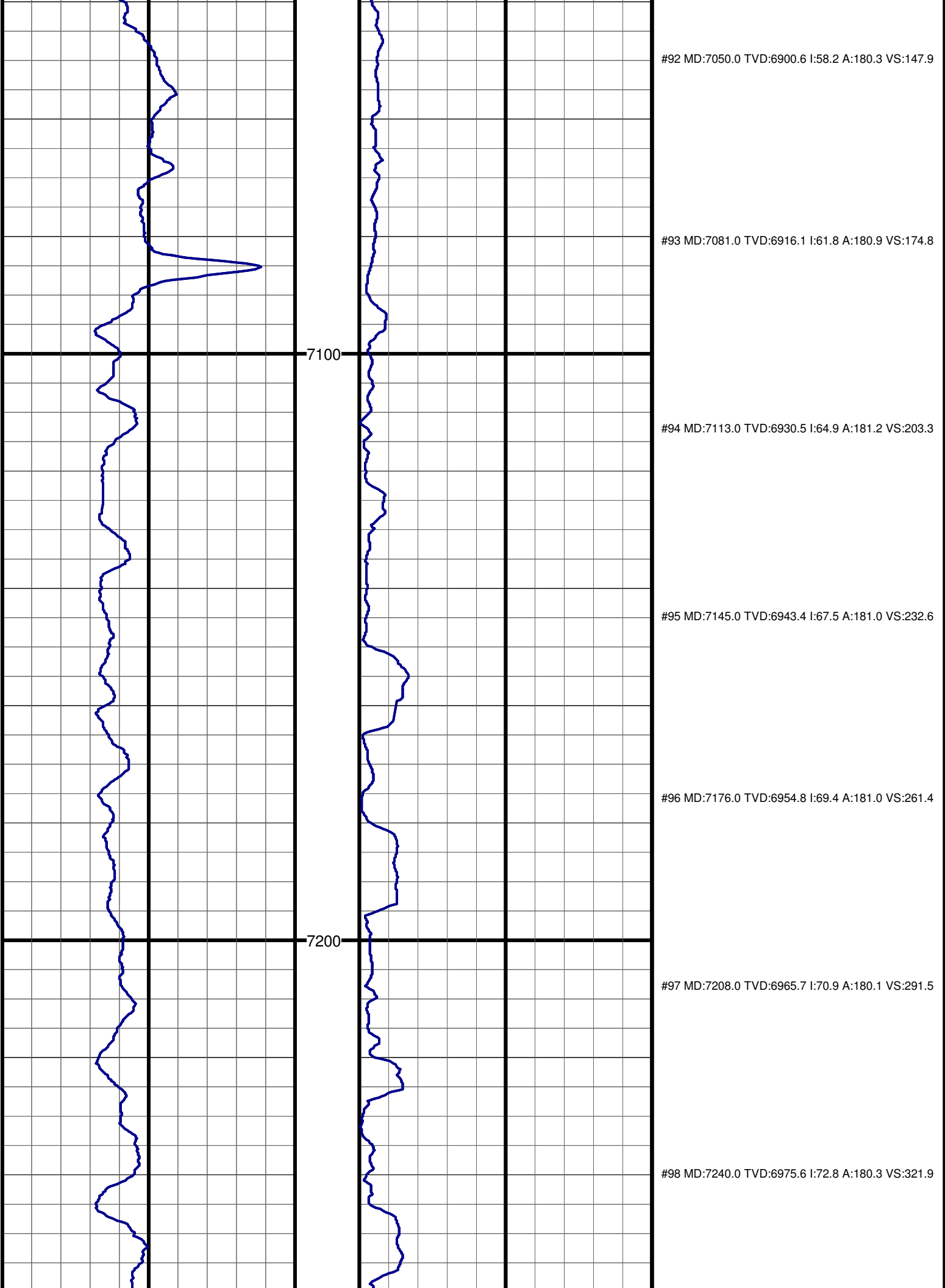
#75 MD:6512.0 TVD:6476.4 I:14.5 A:172.9 VS:-161.6

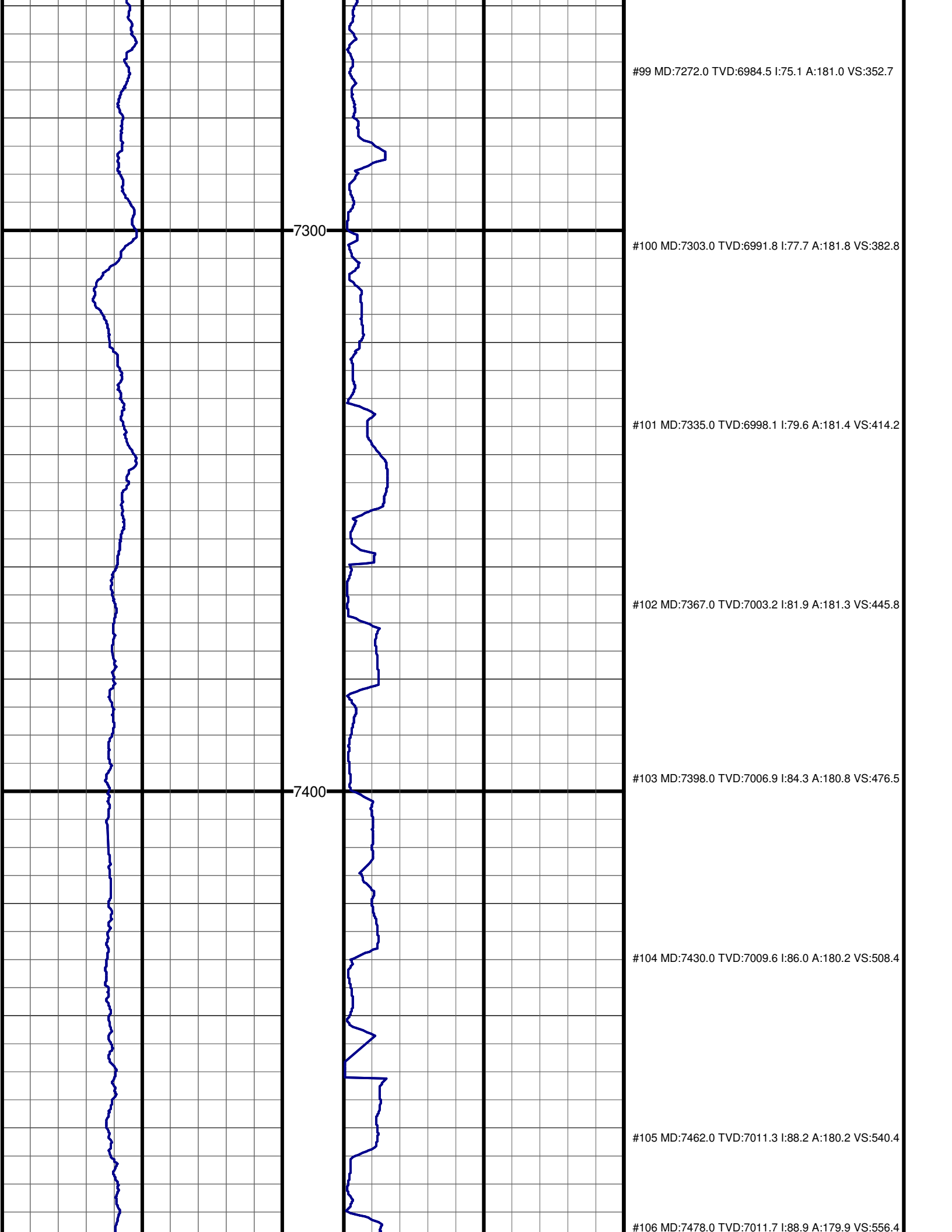
#76 MD:6544.0 TVD:6507.3 I:16.5 A:179.9 VS:-153.1

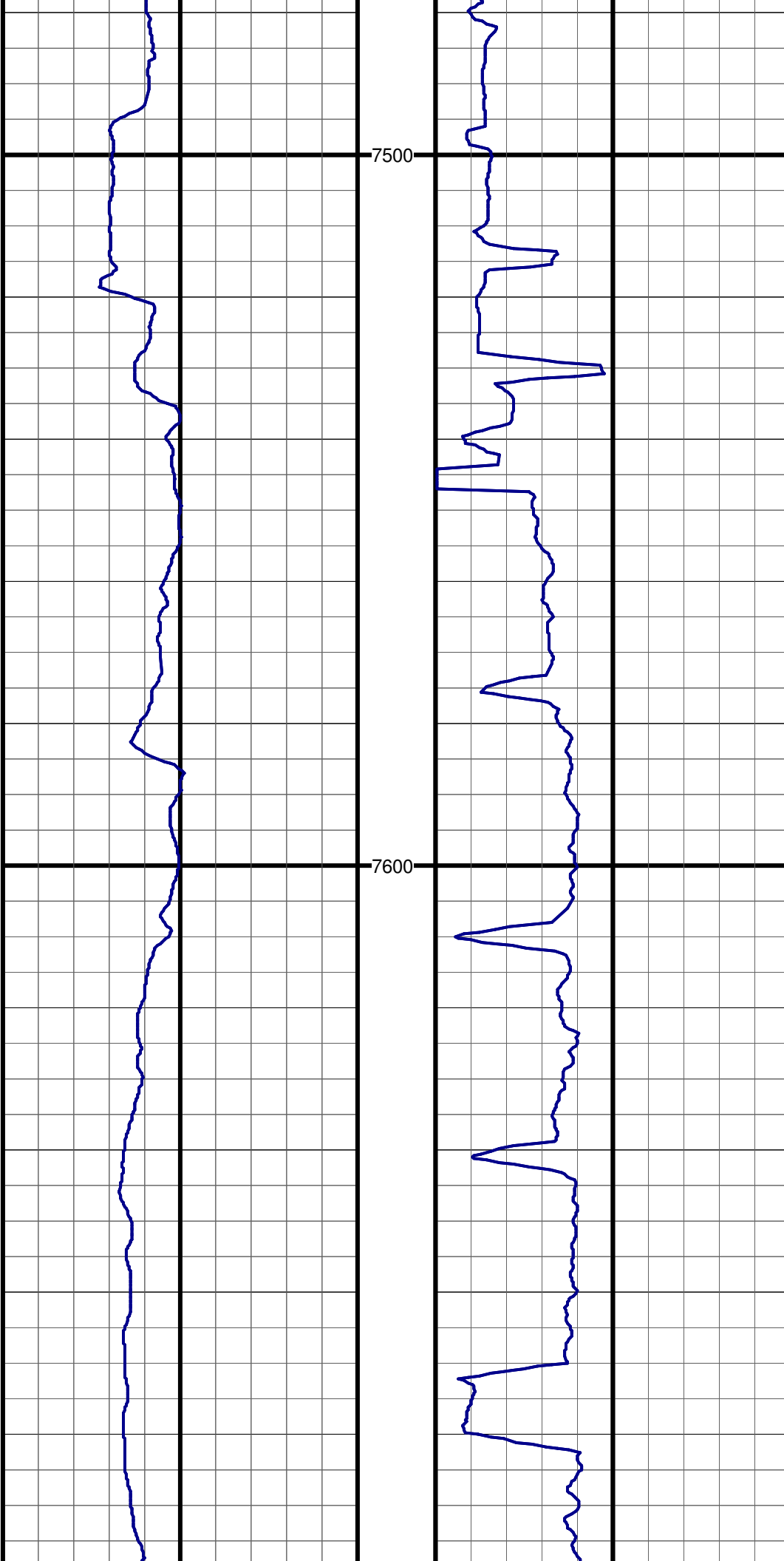
#77 MD:6576.0 TVD:6537.7 I:19.0 A:183.0 VS:-143.3







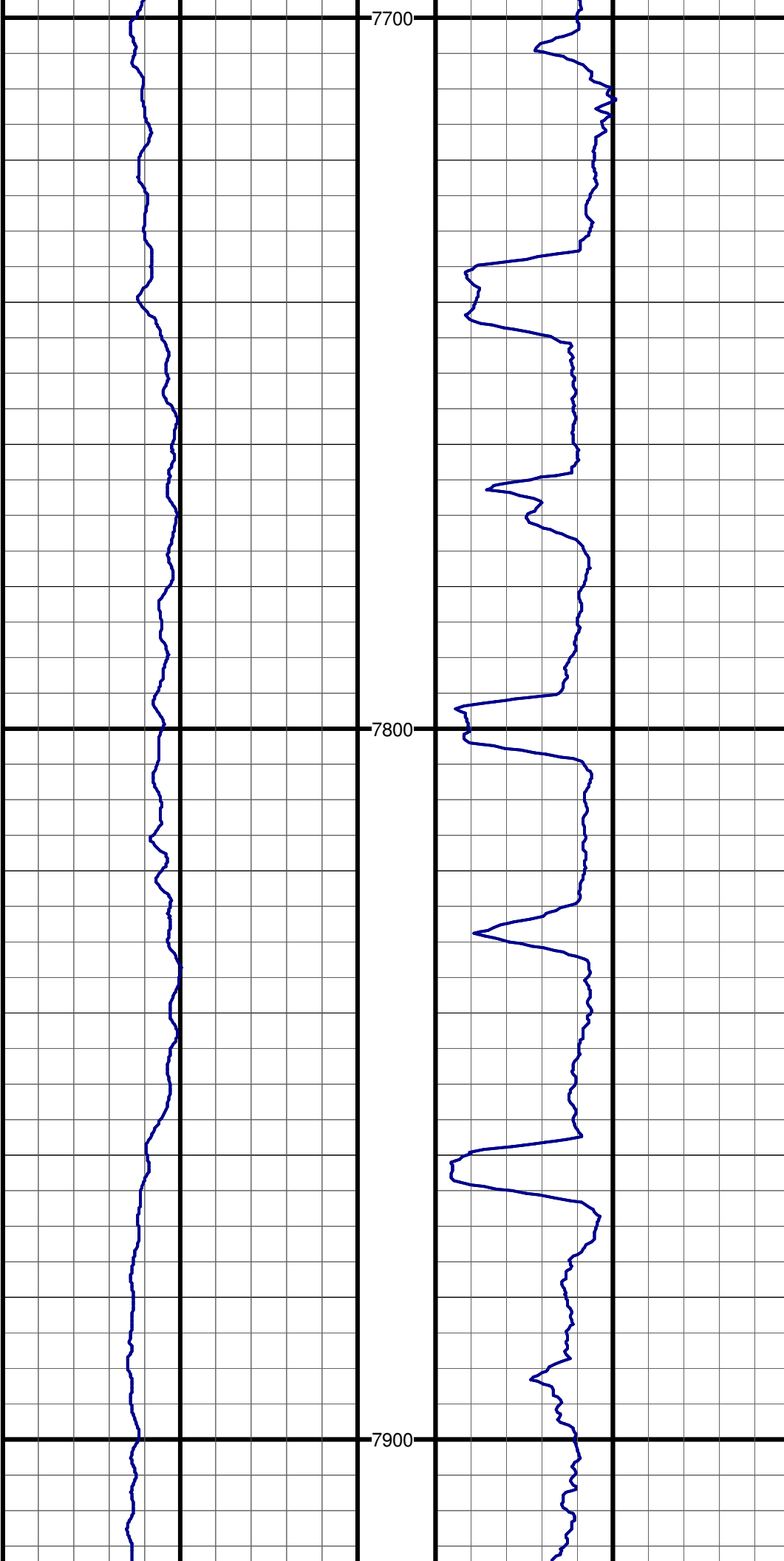




#107 MD:7558.0 TVD:7012.6 I:89.8 A:178.8 VS:636.3

#108 MD:7621.0 TVD:7012.8 I:89.7 A:179.3 VS:699.3

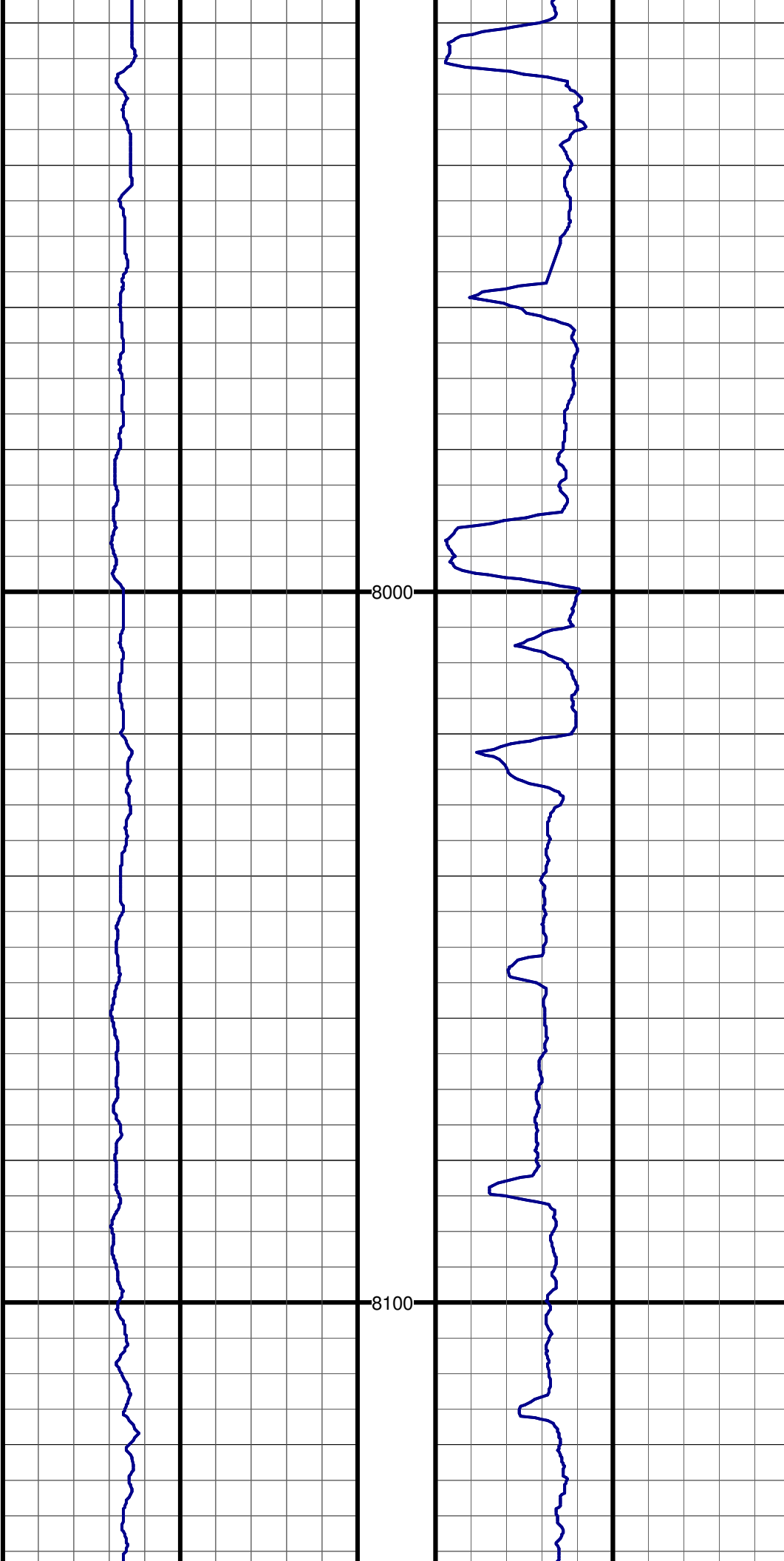
#109 MD:7684.0 TVD:7013.1 I:89.8 A:178.2 VS:762.3



#110 MD:7748.0 TVD:7012.3 I:91.7 A:178.4 VS:826.3

#111 MD:7811.0 TVD:7011.6 I:89.5 A:177.4 VS:889.2

#112 MD:7874.0 TVD:7012.2 I:89.4 A:177.8 VS:952.2

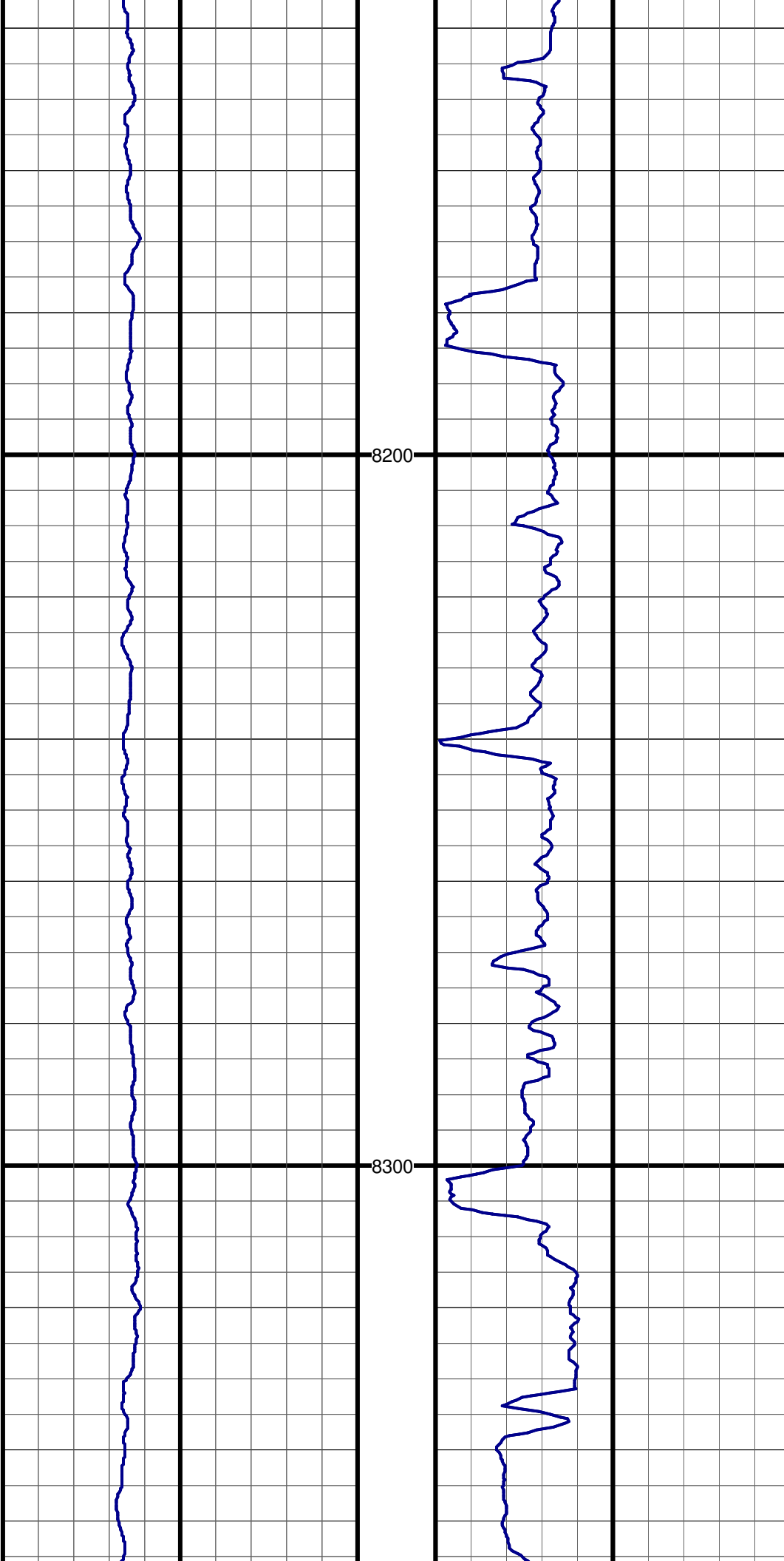


#113 MD:7938.0 TVD:7013.0 I:89.2 A:178.3 VS:1016.1

#114 MD:8001.0 TVD:7013.4 I:90.0 A:179.2 VS:1079.1

#115 MD:8064.0 TVD:7013.4 I:90.0 A:179.0 VS:1142.1

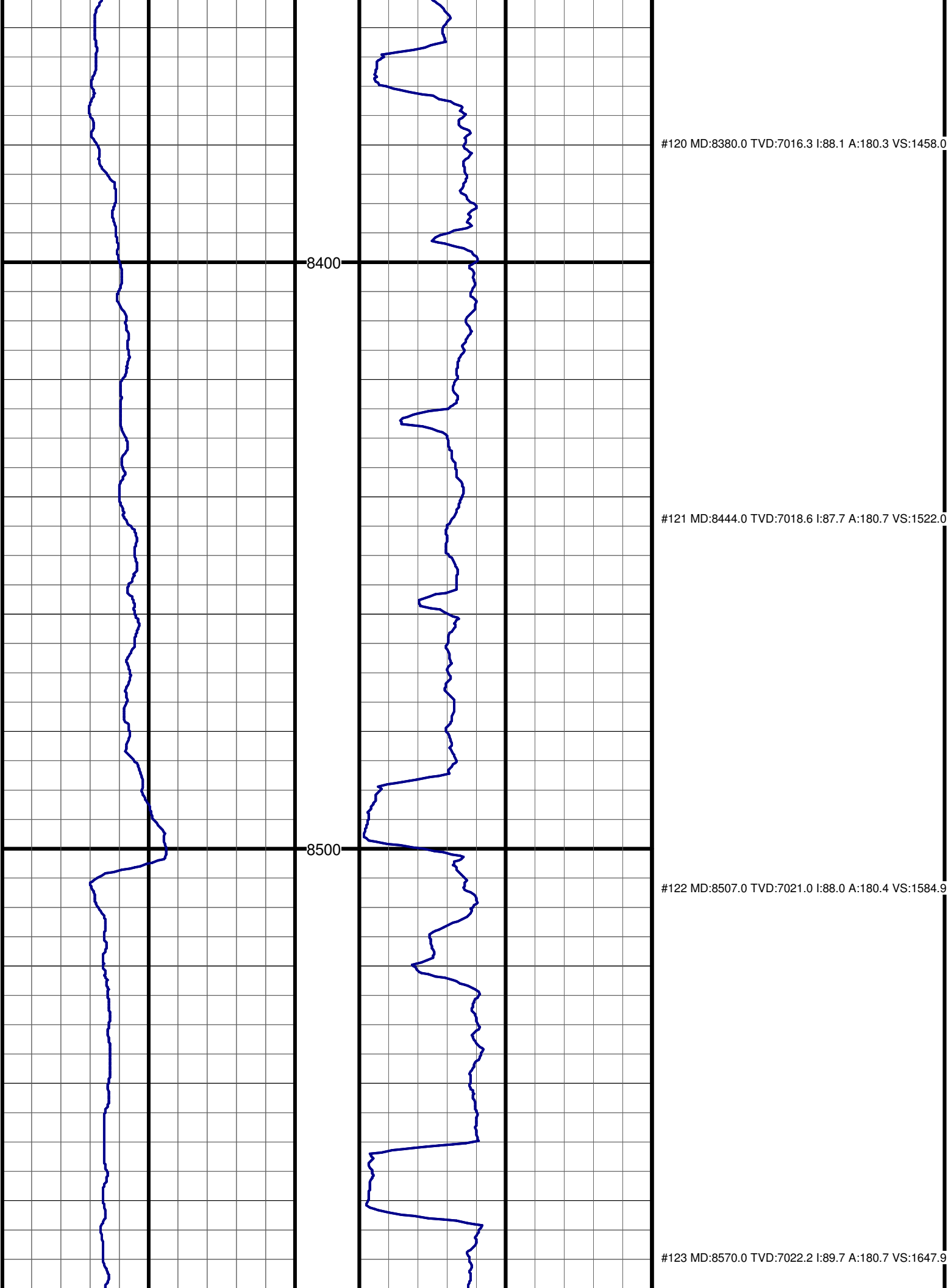
#116 MD:8127.0 TVD:7014.1 I:88.9 A:178.0 VS:1205.1

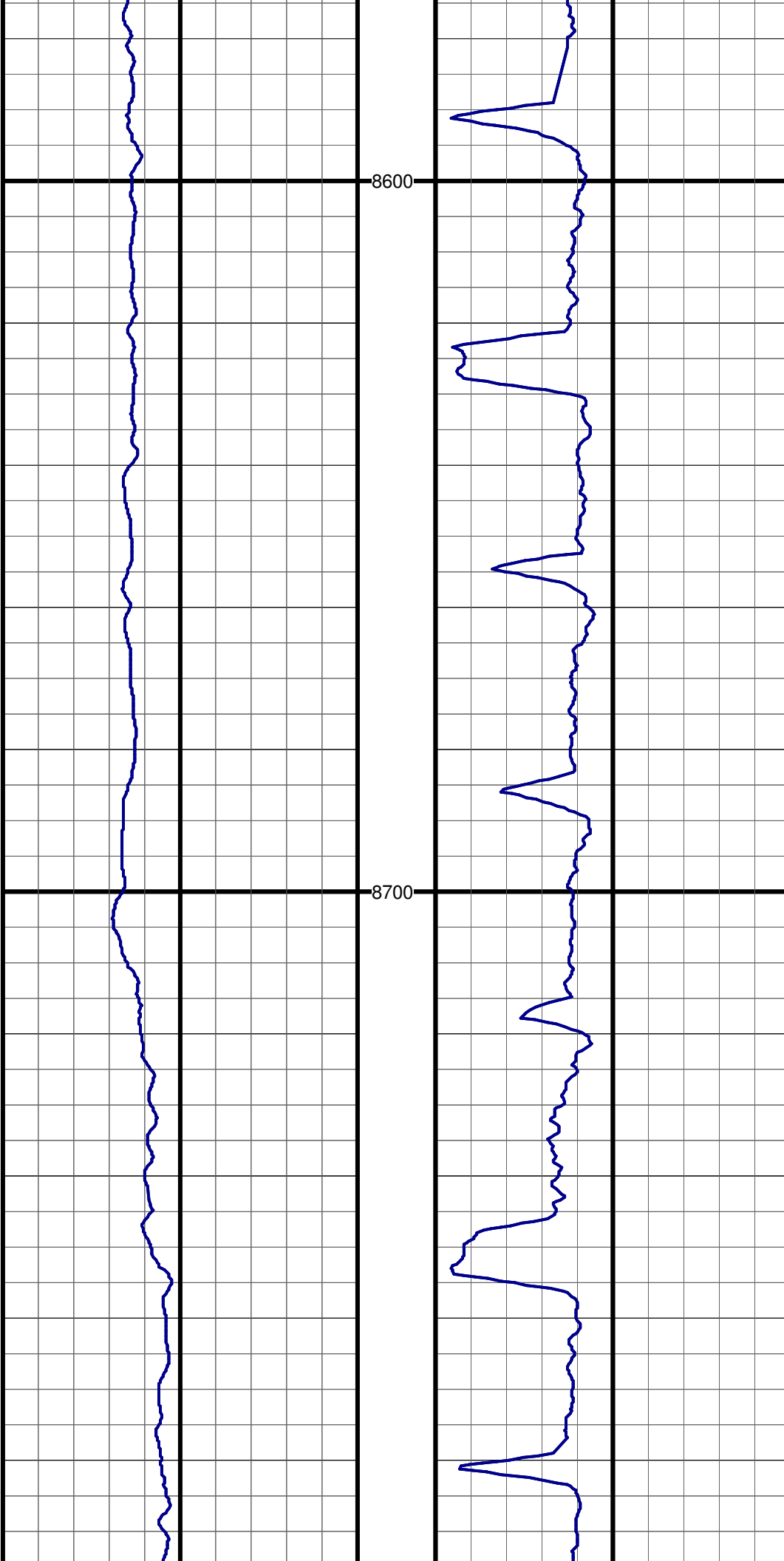


#117 MD:8190.0 TVD:7014.8 I:89.8 A:178.4 VS:1268.0

#118 MD:8254.0 TVD:7014.8 I:90.2 A:179.8 VS:1332.0

#119 MD:8317.0 TVD:7014.9 I:89.5 A:180.3 VS:1395.0





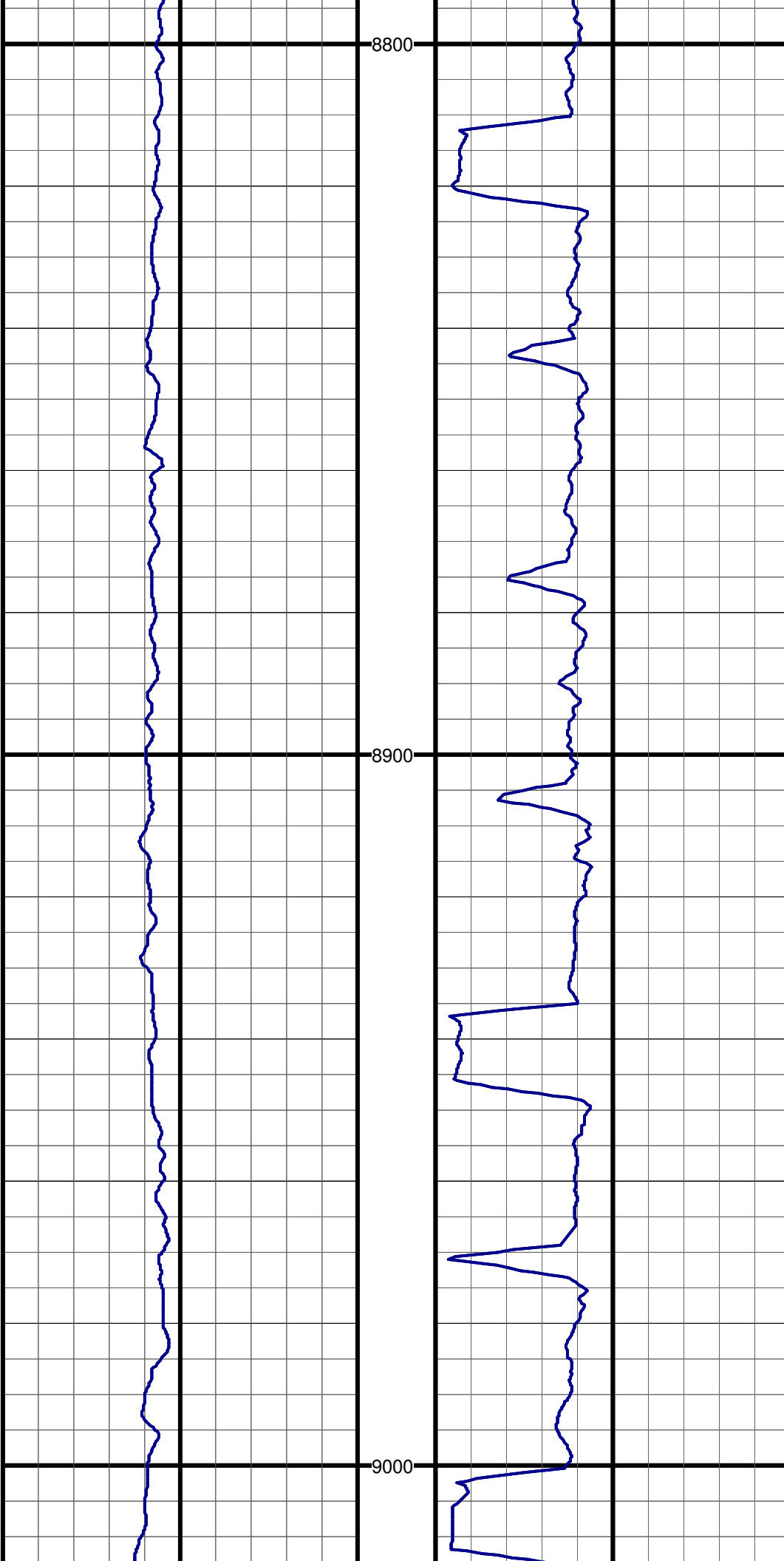
8600

#124 MD:8634.0 TVD:7022.4 I:89.9 A:180.1 VS:1711.9

8700

#125 MD:8697.0 TVD:7022.9 I:89.2 A:180.7 VS:1774.9

#126 MD:8760.0 TVD:7023.7 I:89.5 A:180.2 VS:1837.9

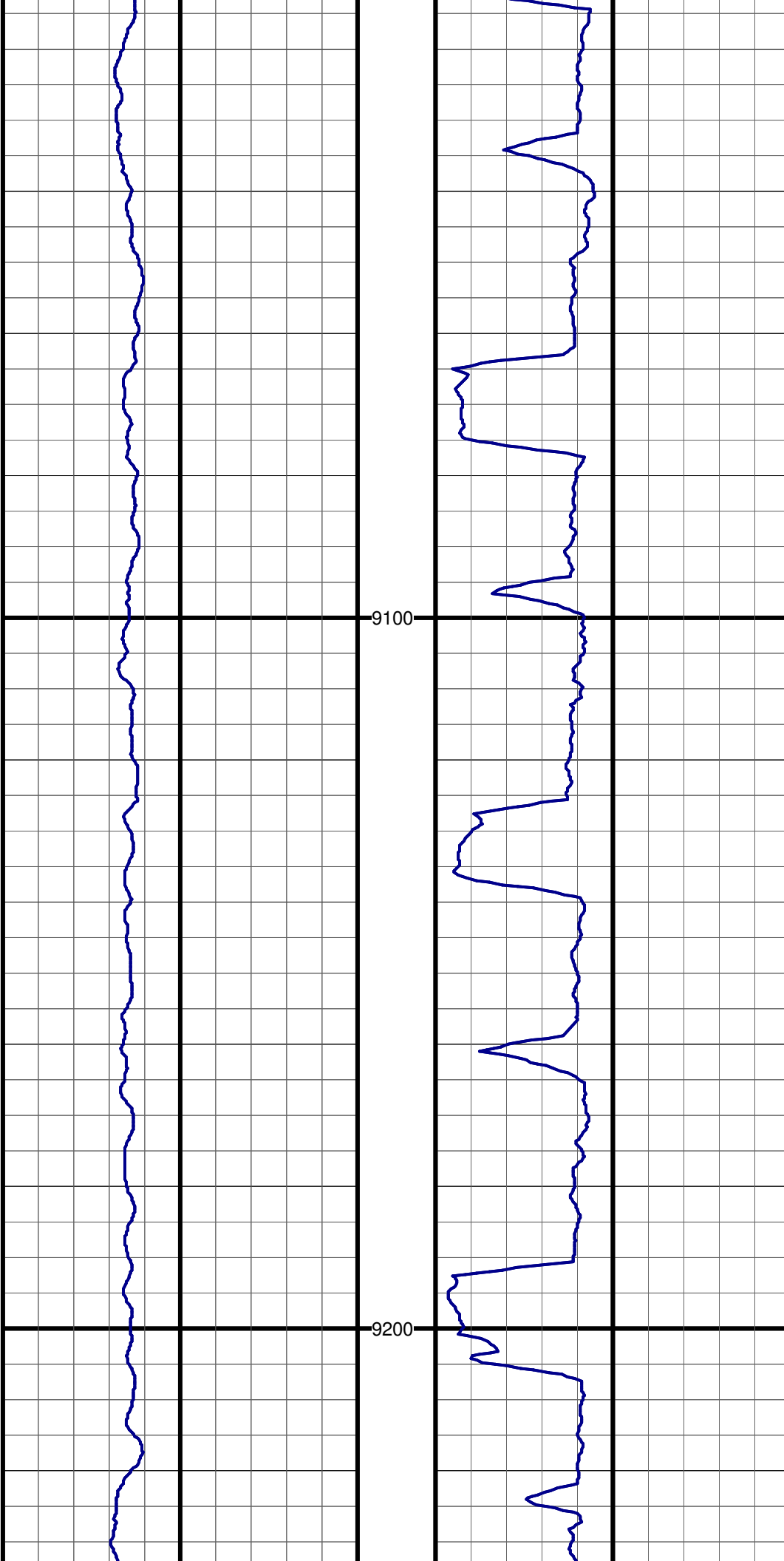


#127 MD:8824.0 TVD:7023.8 I:90.3 A:178.7 VS:1901.9

#128 MD:8887.0 TVD:7023.8 I:89.7 A:175.3 VS:1964.8

#129 MD:8950.0 TVD:7023.8 I:90.3 A:173.6 VS:2027.5

#130 MD:9014.0 TVD:7023.8 I:90.3 A:174.0 VS:2091.0

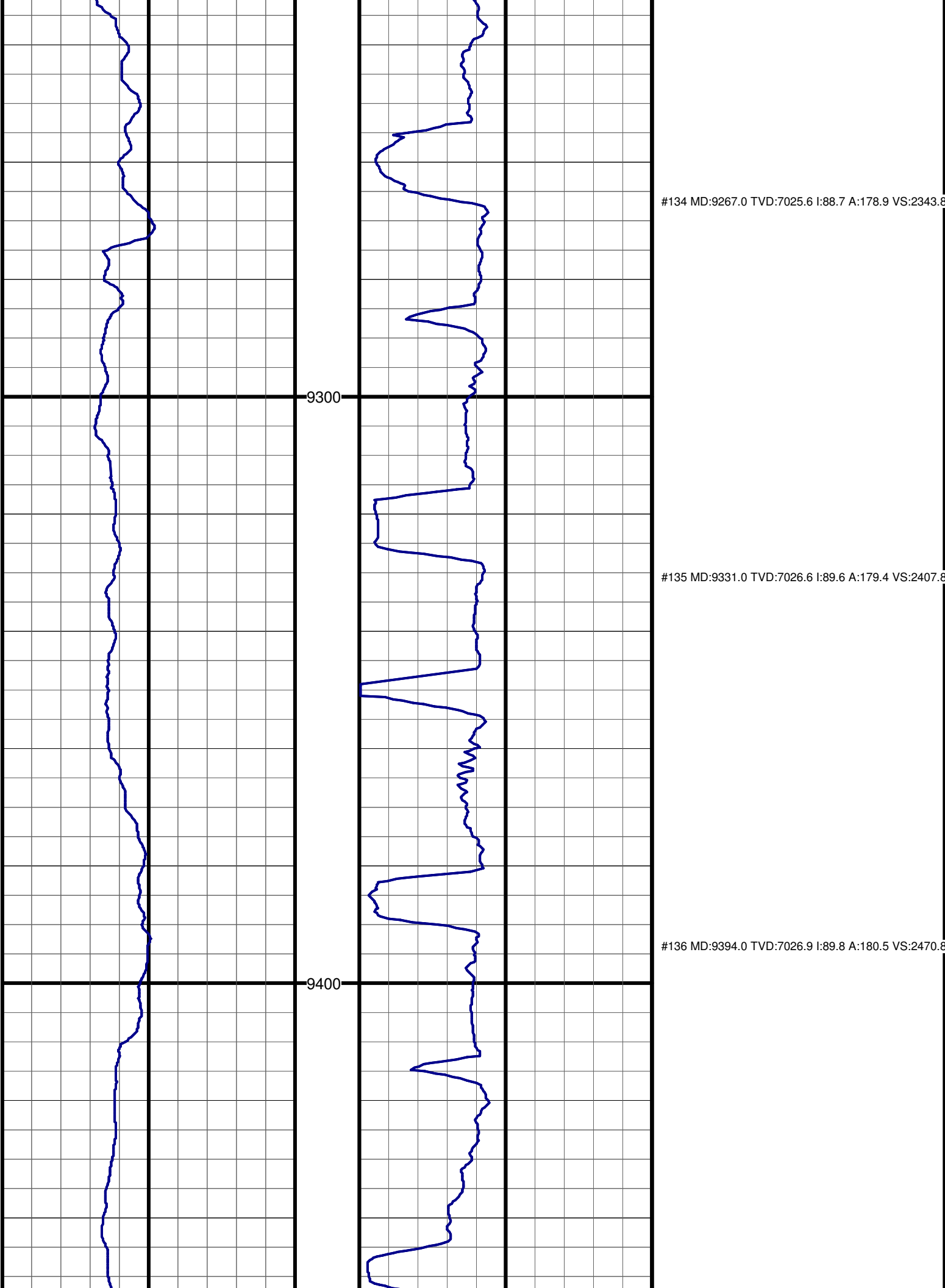


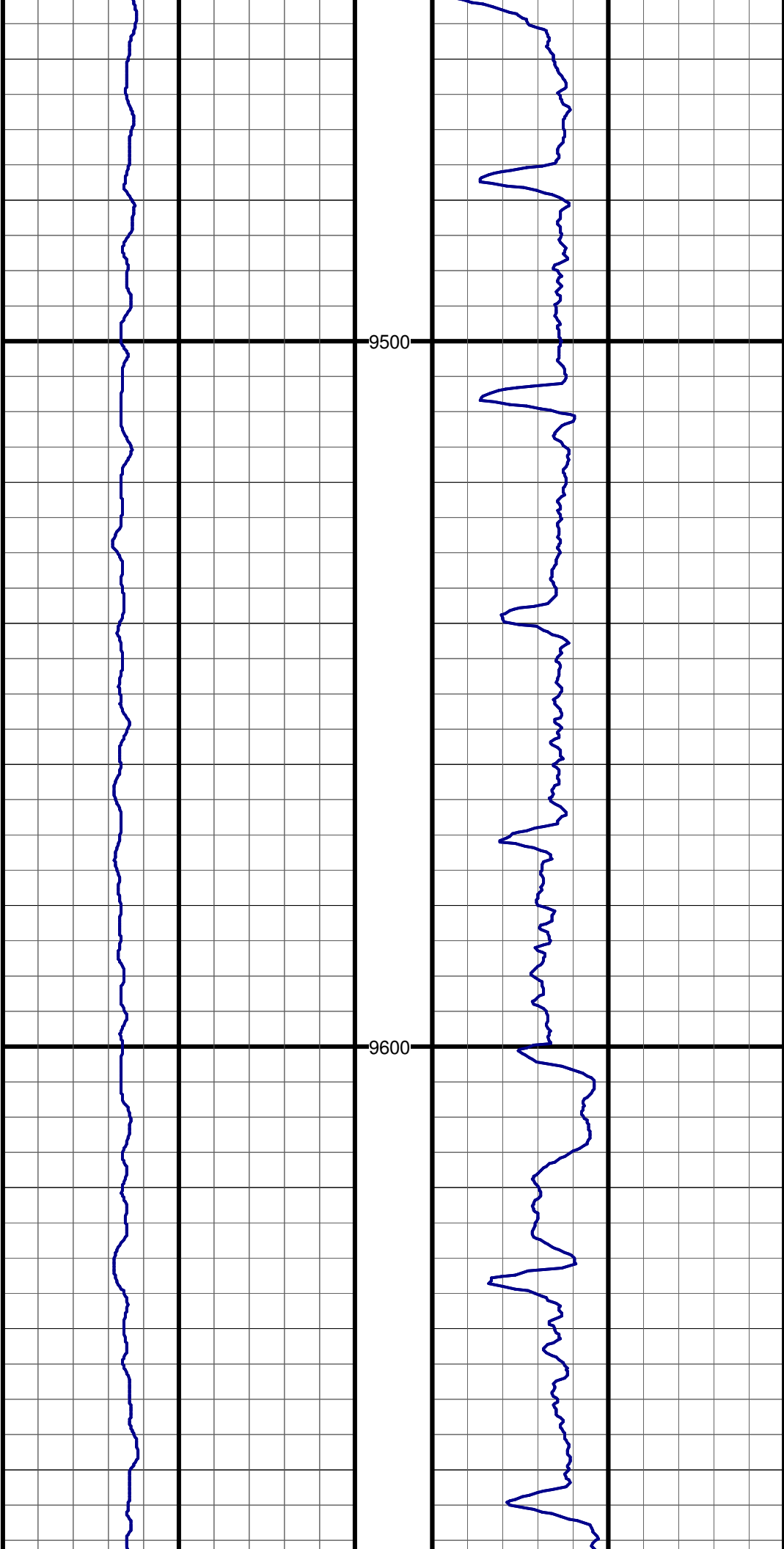
#130 MD:9014.0 TVD:7023.4 I:90.3 A:174.8 VS:2091.2

#131 MD:9077.0 TVD:7023.4 I:89.8 A:176.1 VS:2154.0

#132 MD:9141.0 TVD:7023.4 I:90.2 A:178.0 VS:2217.9

#133 MD:9204.0 TVD:7024.1 I:88.5 A:179.2 VS:2280.8





#137 MD:9458.0 TVD:7026.9 I:90.2 A:180.5 VS:2534.8

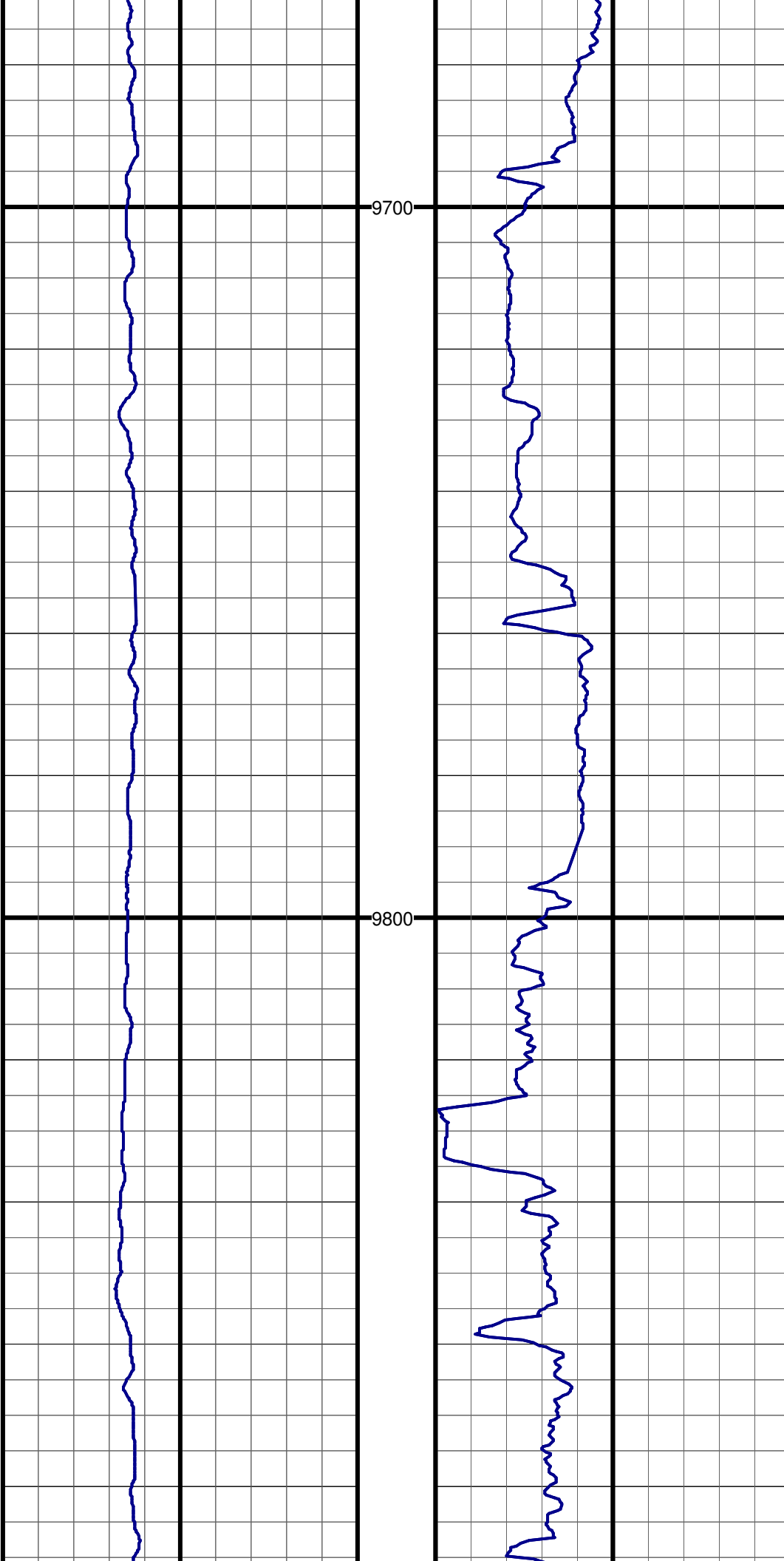
9500

#138 MD:9521.0 TVD:7026.9 I:89.9 A:181.3 VS:2597.8

#139 MD:9584.0 TVD:7026.9 I:90.1 A:182.0 VS:2660.8

9600

#140 MD:9648.0 TVD:7026.7 I:90.1 A:181.9 VS:2724.7



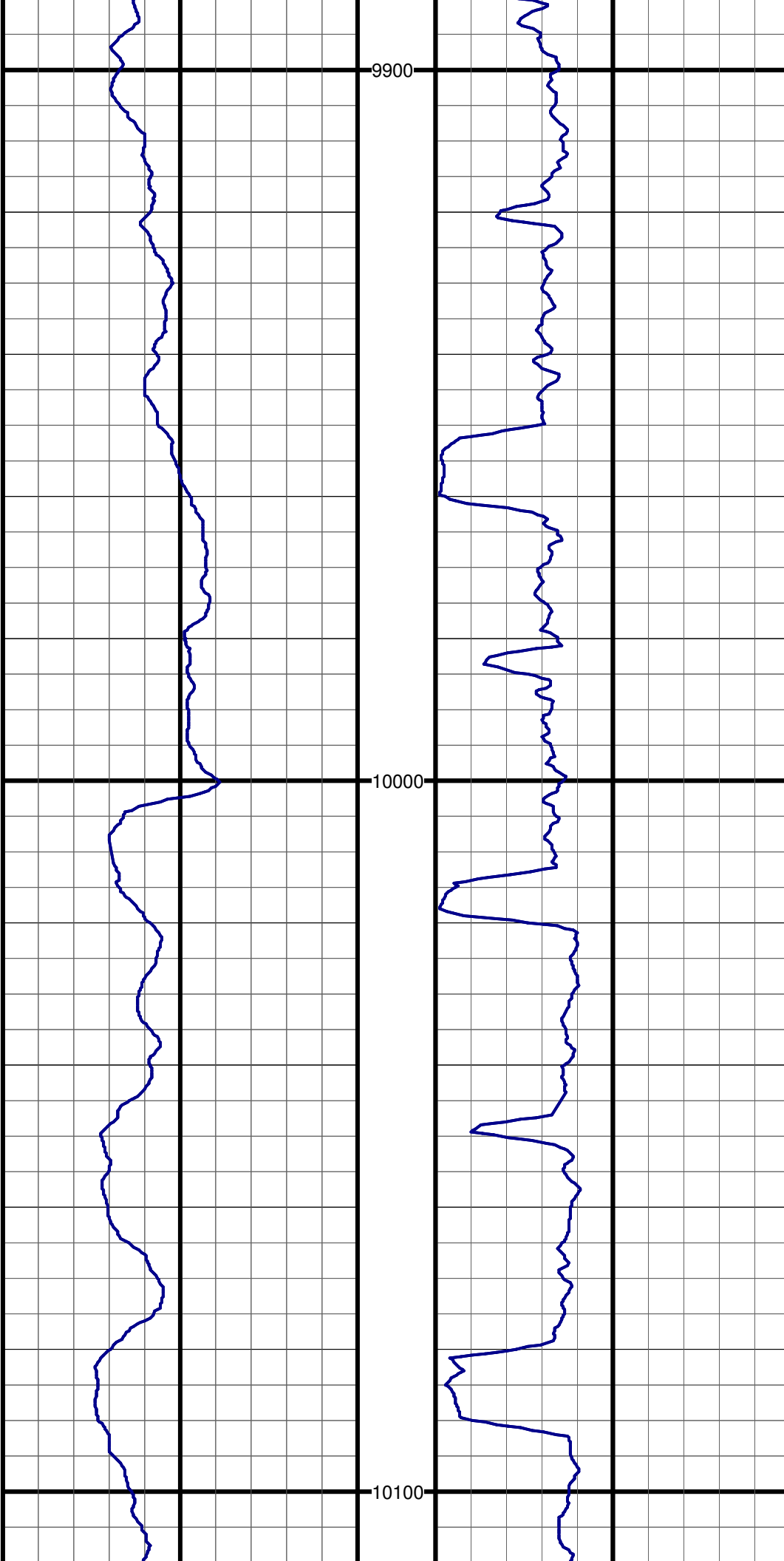
9700

#141 MD:9711.0 TVD:7027.2 I:89.1 A:181.2 VS:2787.7

#142 MD:9775.0 TVD:7028.4 I:88.7 A:180.2 VS:2851.7

9800

#143 MD:9838.0 TVD:7029.4 I:89.5 A:180.3 VS:2914.7

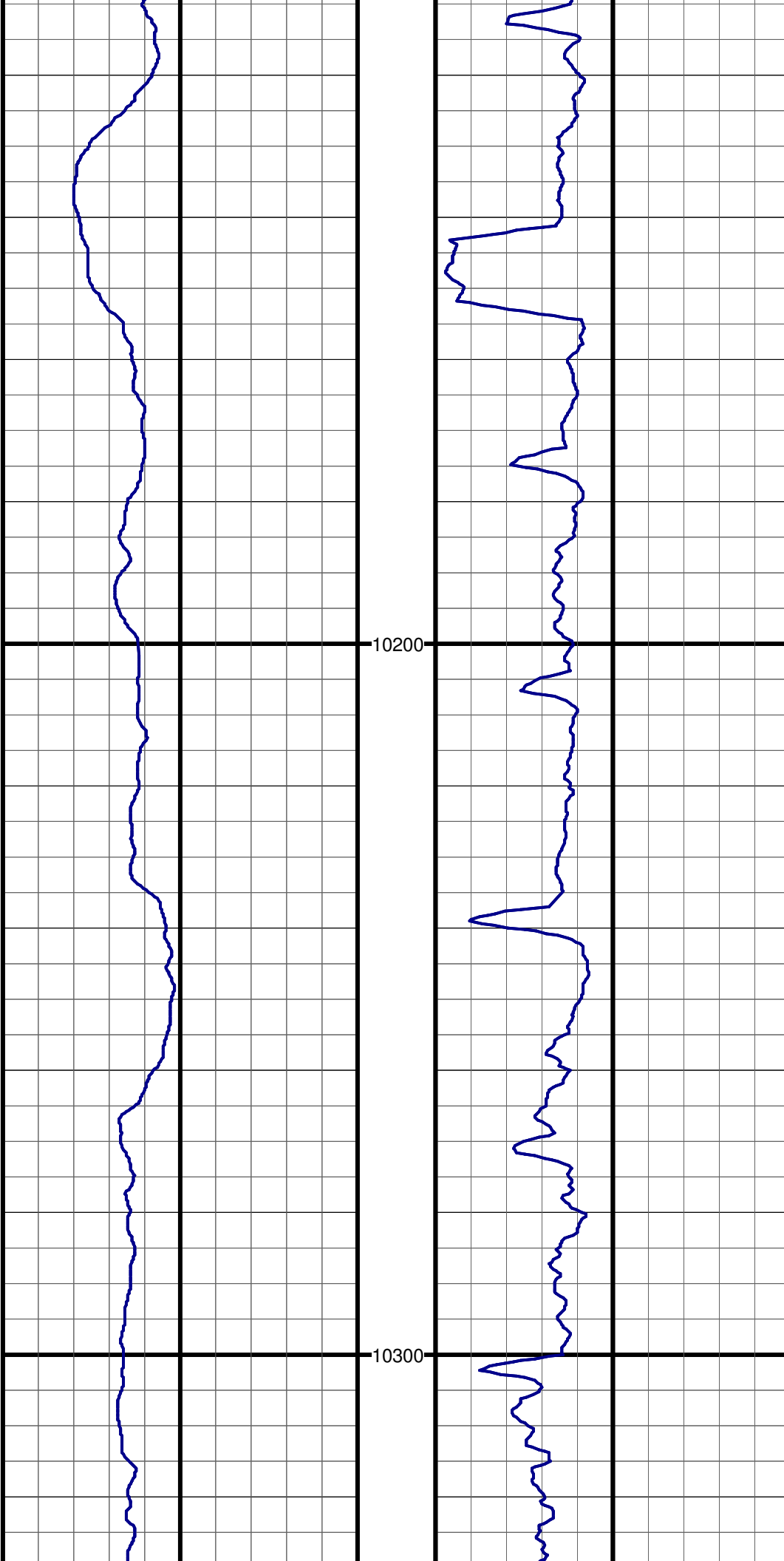


#144 MD:9901.0 TVD:7030.3 I:88.9 A:180.6 VS:2977.7

#145 MD:9965.0 TVD:7031.3 I:89.3 A:180.6 VS:3041.7

#146 MD:10028.0 TVD:7032.2 I:89.0 A:181.0 VS:3104.6

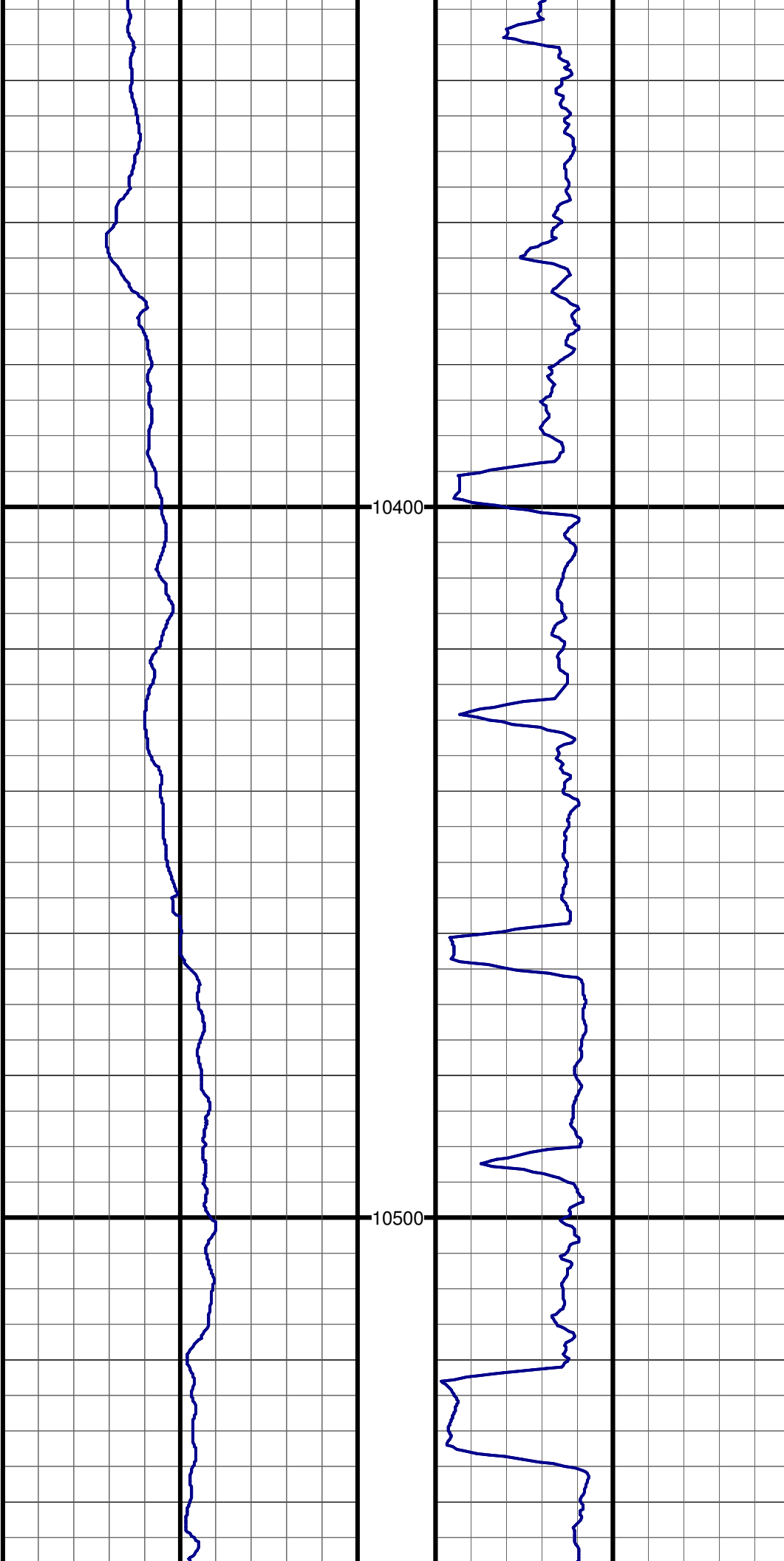
#147 MD:10092.0 TVD:7033.2 I:89.2 A:181.0 VS:3168.6



#148 MD:10155.0 TVD:7033.6 I:90.1 A:181.4 VS:3231.6

#149 MD:10218.0 TVD:7033.5 I:90.1 A:181.1 VS:3294.6

#150 MD:10282.0 TVD:7033.6 I:89.7 A:181.5 VS:3358.6



#151 MD:10345.0 TVD:7034.3 I:89.1 A:180.5 VS:3421.6

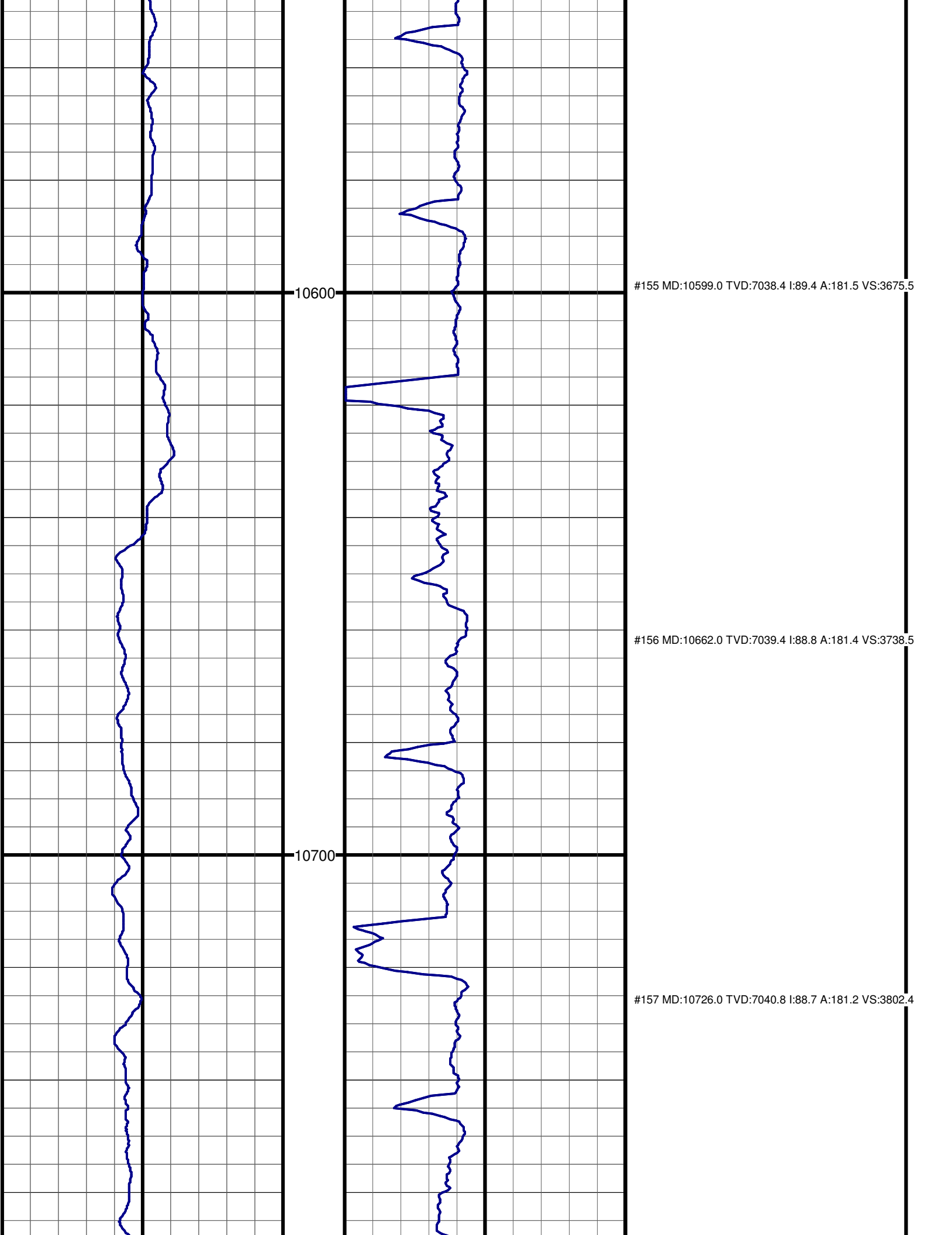
10400

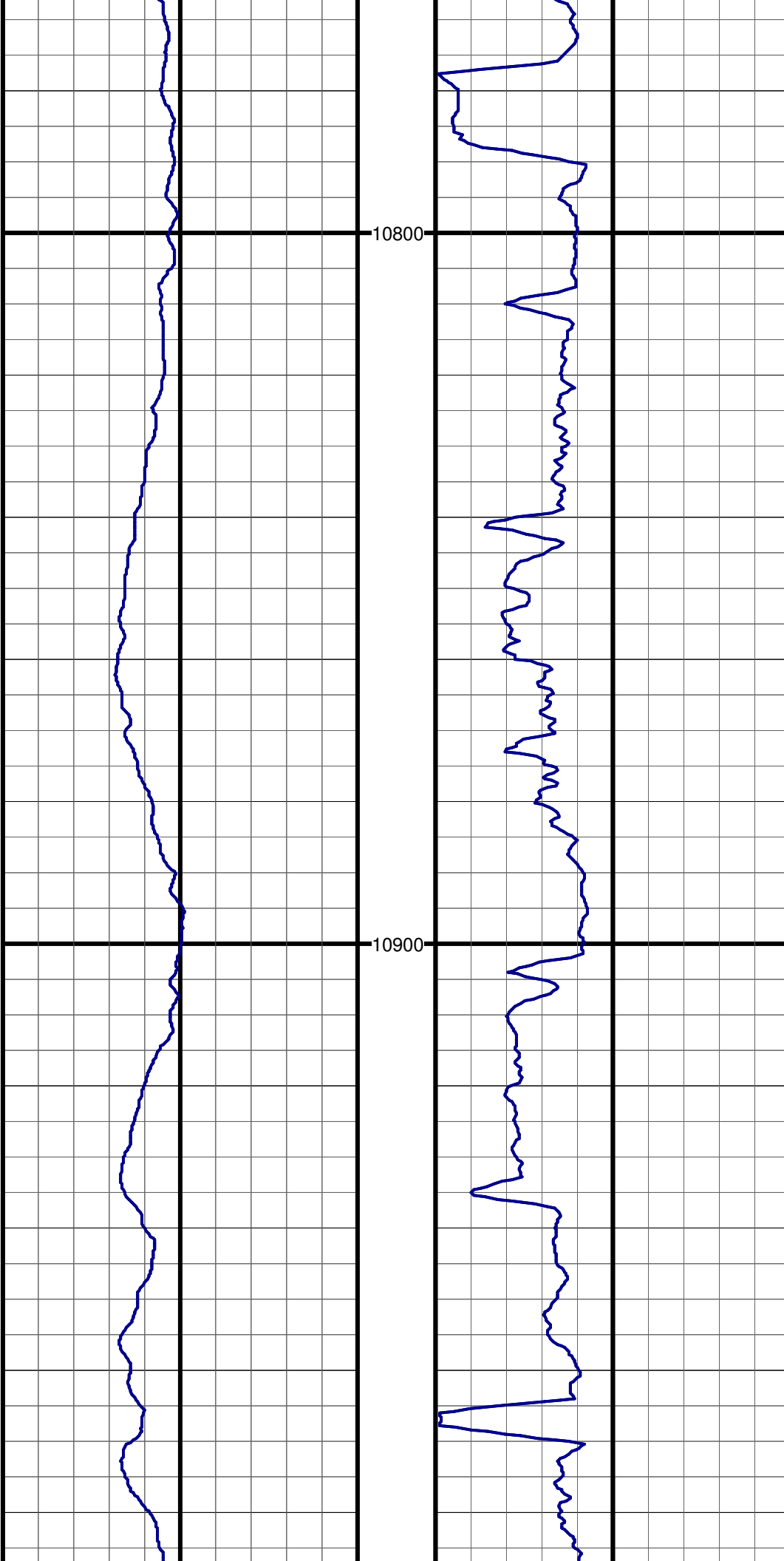
#152 MD:10408.0 TVD:7035.3 I:89.0 A:180.7 VS:3484.5

#153 MD:10472.0 TVD:7036.7 I:88.5 A:180.8 VS:3548.5

10500

#154 MD:10535.0 TVD:7037.8 I:89.5 A:181.3 VS:3611.5



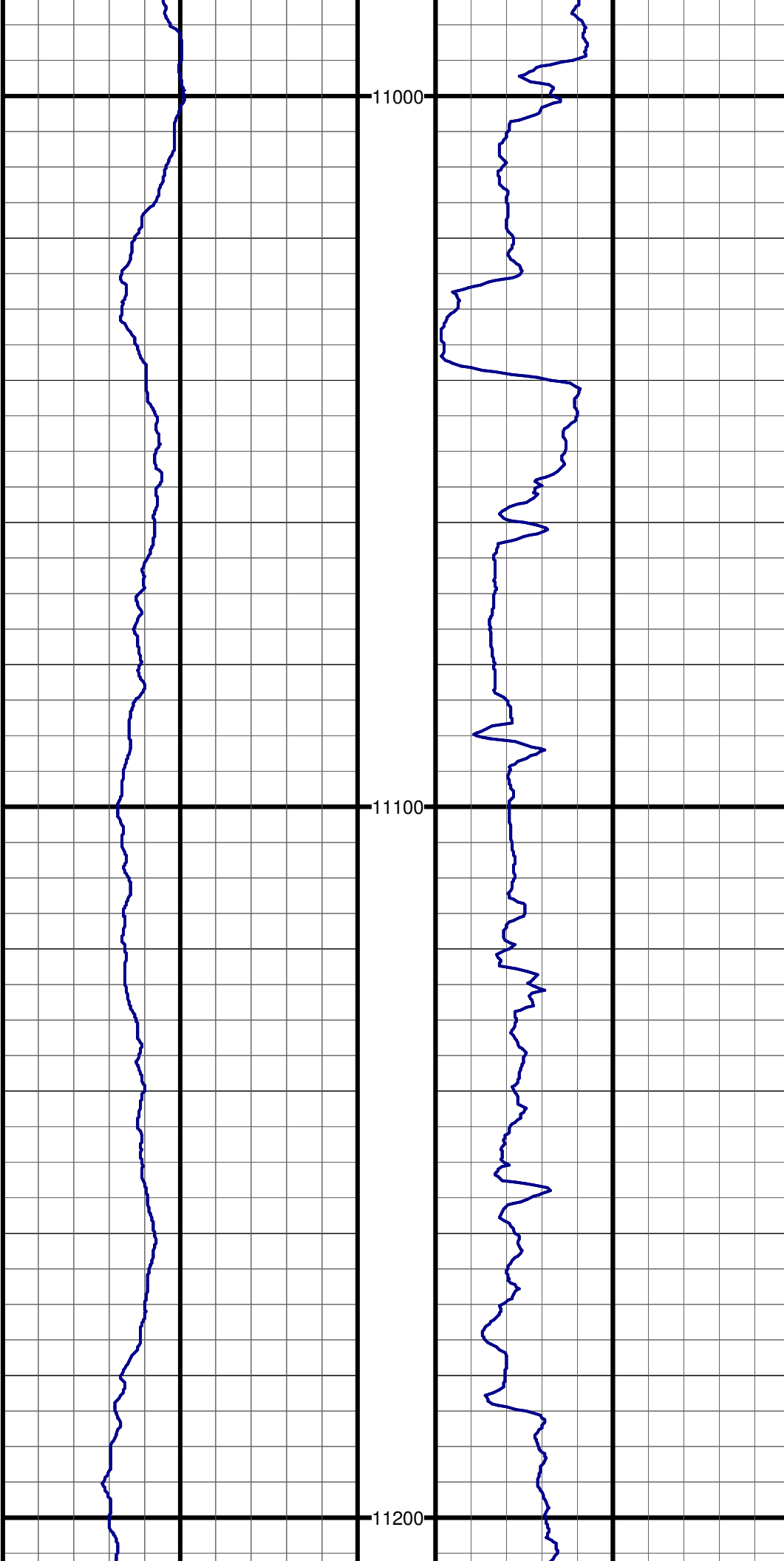


#158 MD:10789.0 TVD:7041.7 I:89.7 A:181.4 VS:3865.4

#159 MD:10852.0 TVD:7041.9 I:89.9 A:181.9 VS:3928.4

#160 MD:10915.0 TVD:7042.3 I:89.4 A:180.7 VS:3991.4

#161 MD:10979.0 TVD:7043.4 I:88.7 A:180.8 VS:4055.3



#162 MD:11042.0 TVD:7044.5 I:89.2 A:181.1 VS:4118.3

#163 MD:11105.0 TVD:7045.0 I:90.0 A:181.0 VS:4181.3

#164 MD:11169.0 TVD:7045.1 I:89.8 A:180.5 VS:4245.3

