



Digital Drilling Data
Systems, LLC

Gamma Log

(Scale: 5":.100' (100'))

Company: Cathedral Engery

Well: Flanigan 1C-6H

Field: Wattenberg

Well ID: 51233569300

Job Number: 125489

Location: NWNE S6-T1N-R64W

Operator 1: Richie Moulton

Operator 2: Eric Reichenecker

State: CO

County: Weld

Country: U.S.

Elev KB:

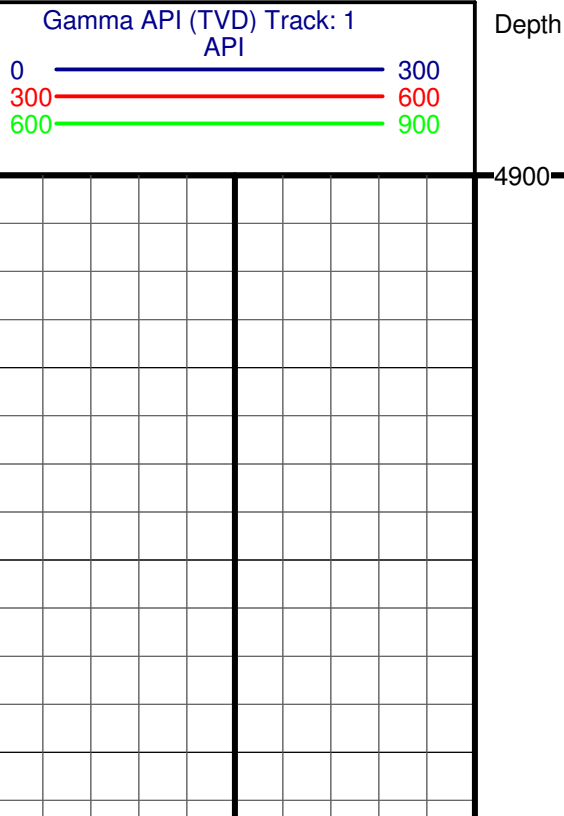
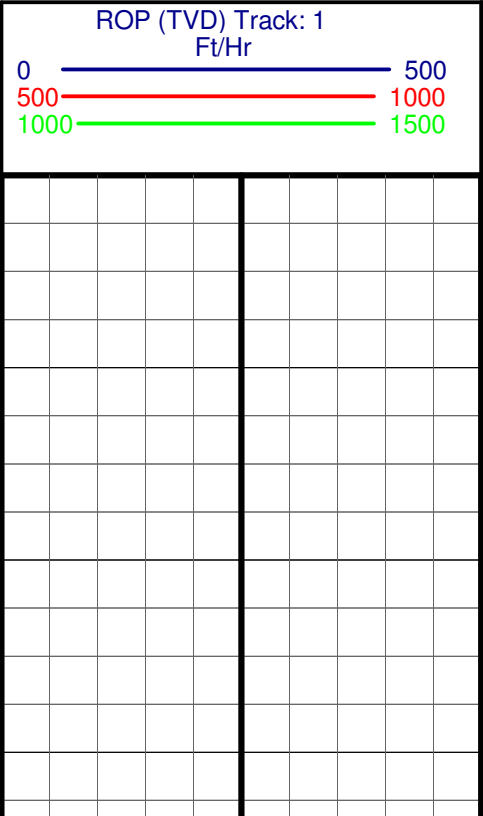
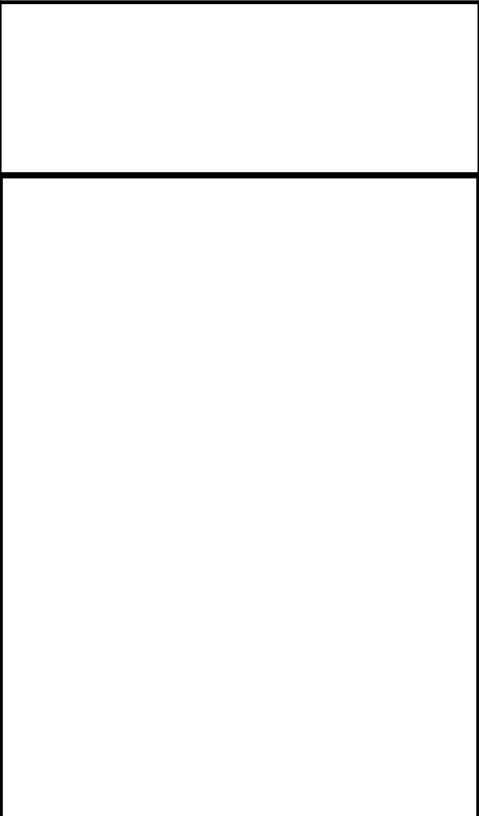
Elev DF: 13

Elev GL: 5016

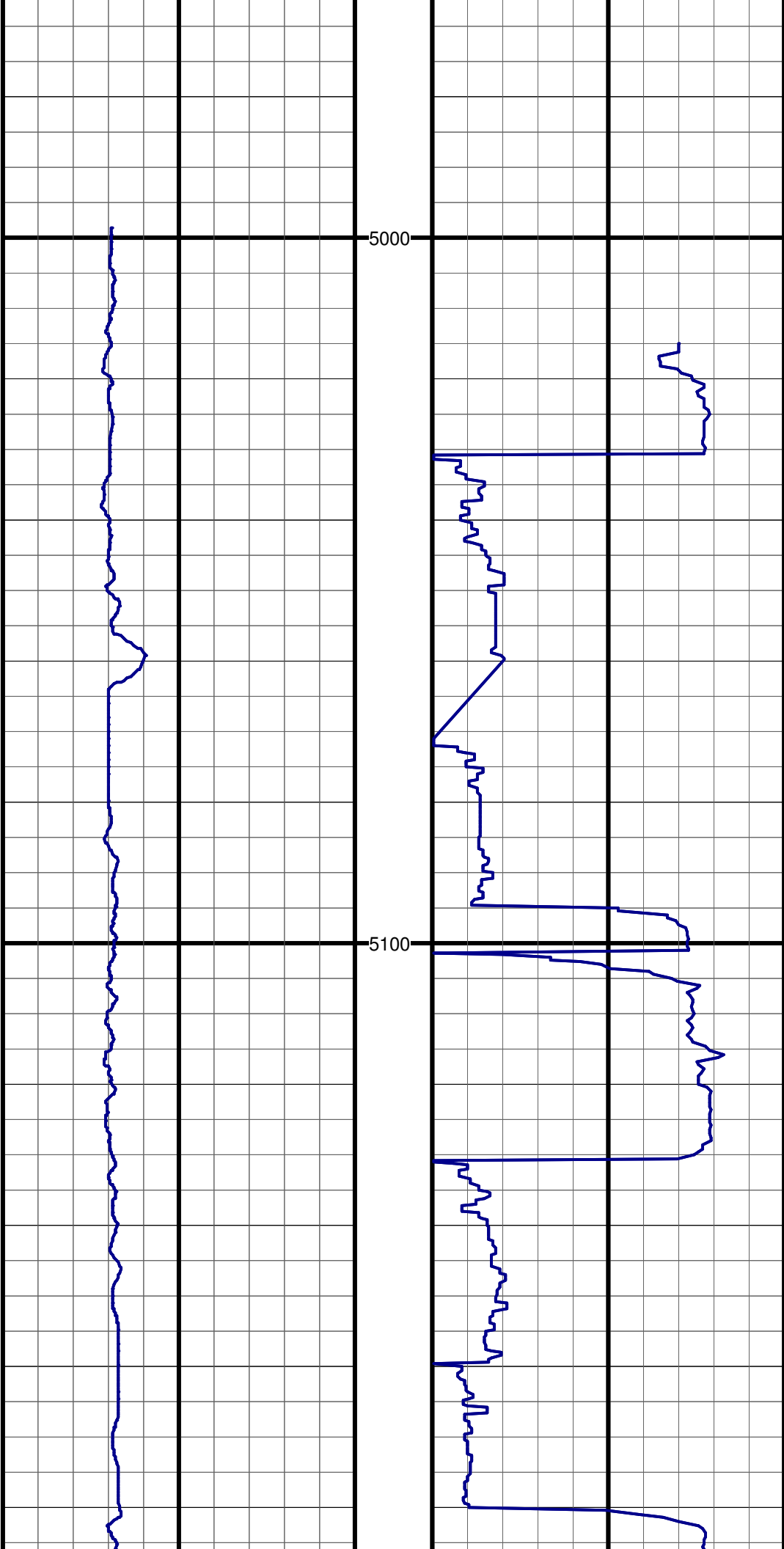
Comment 1:
Comment 2:
Comment 3:
Comment 4:
Comment 5:

Hole Data			Casing Record			
Size	From	To	Size	From	To	
12.0	0	1335	9.625	0	1324	
8.75	1335	6688	7.0	0	7391	
8.75	6688	7046	4.5	0	11600	
8.75	7046	7405				
6.125	7405	11630				

Tool Run Data		Run #1	Run #2	Run #3	Run #4	Run #5
Tool S/N	1278	1278	1278	1278	1278	1014
Cal Factor	n/a	4.108	4.108	4.108	4.108	3.027
Gamma Offset	n/a	38.5	38.8	38.8	38.8	37.1
Start Depth	90	1345	6688	7046	7405	7405
Start Date	8/17/12	8/19/12	8/22/12	8/23/12	8/27/12	
Start Time	7:00	6:30	6:30	10:30	11:00	
End Depth	1135	6688	7046	7405	11630	
End Date	8/17/12	8/22/12	8/23/12	8/26/12	8/31/12	
End Time	18:30	6:00	10:00	1:30	16:00	

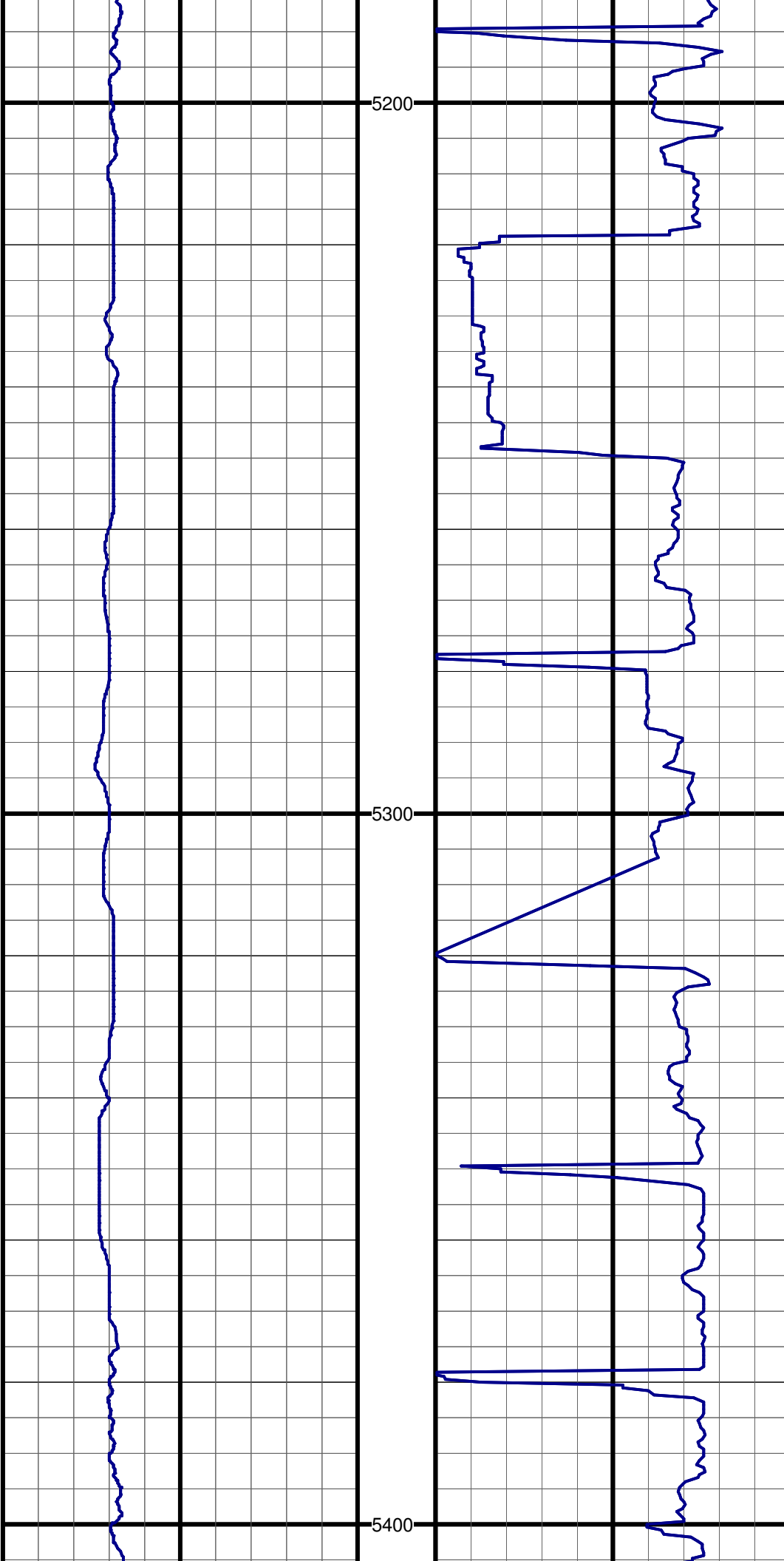


#0 TVD:4989.8 MD:4991.0 I:6.4 A:299.1 VS:16.5



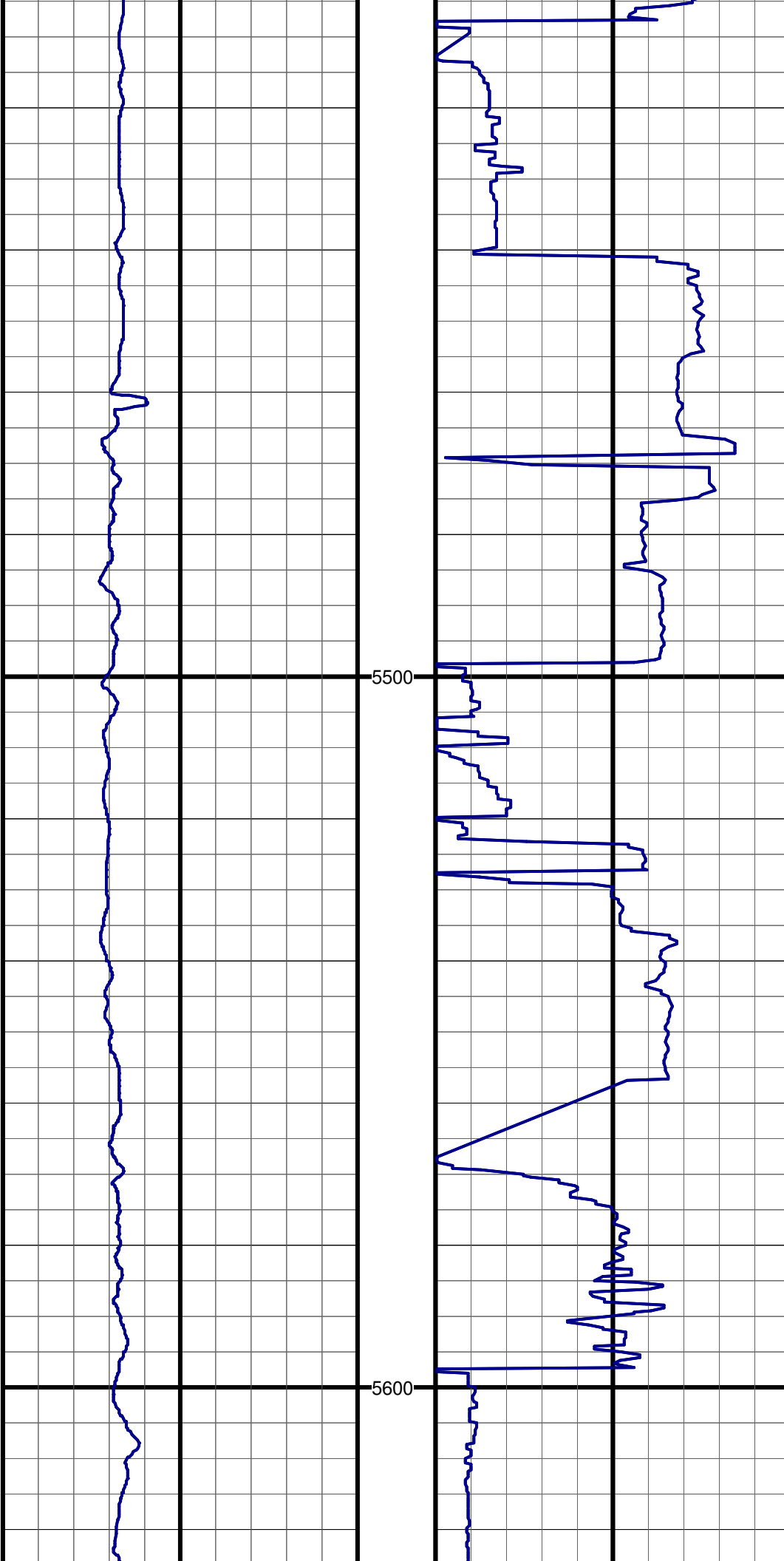
#1 TVD:5084.0 MD:5086.0 I:8.9 A:305.0 VS:9.7

#2 TVD:5177.5 MD:5181.0 I:10.9 A:313.0 VS:-0.6



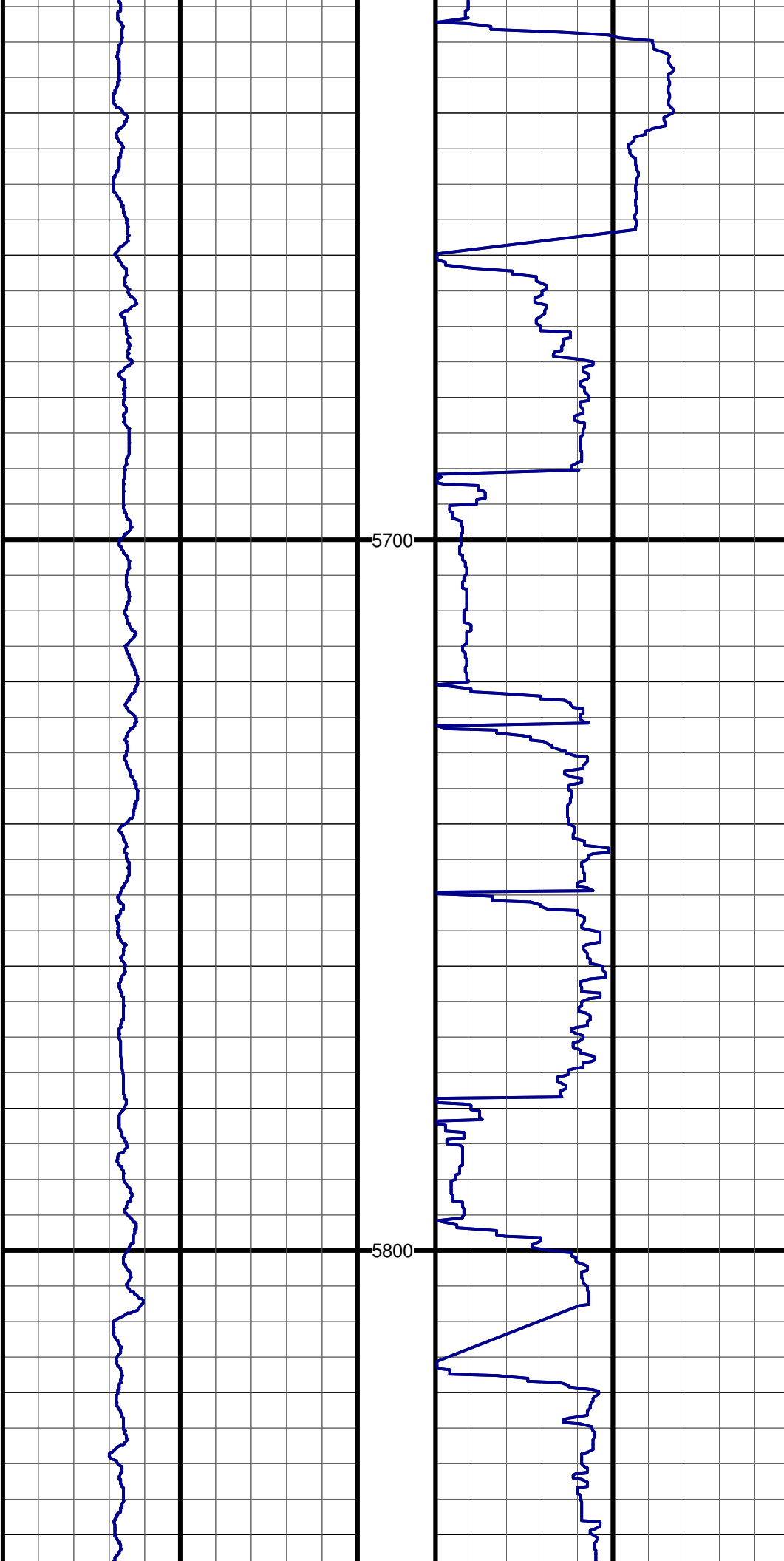
#3 TVD:5270.6 MD:5276.0 I:12.5 A:322.4 VS:-14.9

#4 TVD:5363.5 MD:5371.0 I:11.2 A:322.8 VS:-30.4



#5 TVD:5455.7 MD:5465.0 I:11.6 A:324.6 VS:-45.4

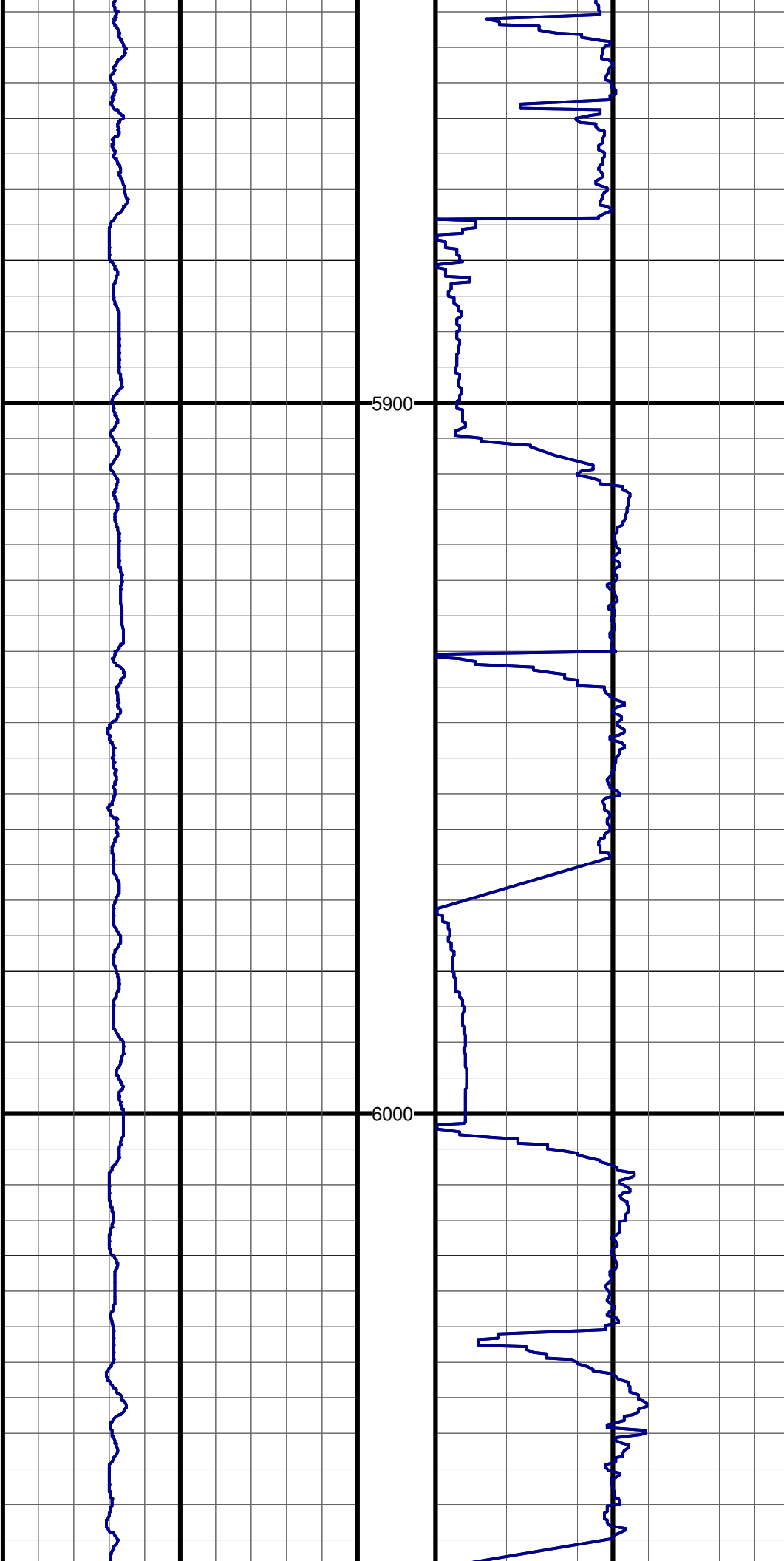
#6 TVD:5548.9 MD:5560.0 I:10.4 A:326.4 VS:-60.3



#7 TVD:5642.3 MD:5655.0 I:10.9 A:322.3 VS:-74.6

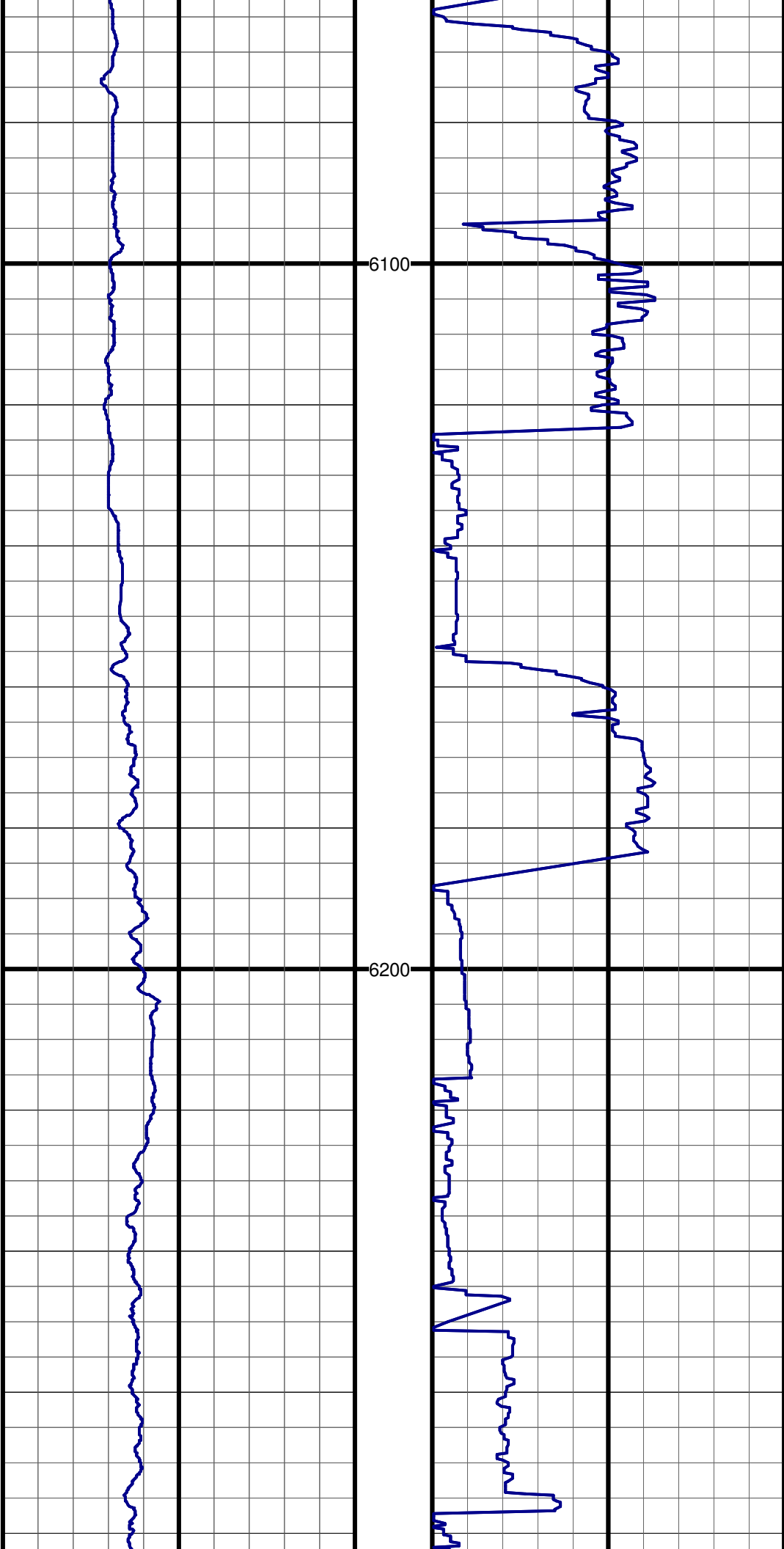
#8 TVD:5735.4 MD:5750.0 I:11.9 A:326.1 VS:-89.8

#9 TVD:5828.4 MD:5845.0 I:11.6 A:326.6 VS:-105.9



#10 TVD:5922.4 MD:5941.0 I:12.1 A:326.1 VS:-122.3

#11 TVD:6015.2 MD:6036.0 I:12.9 A:317.0 VS:-138.3



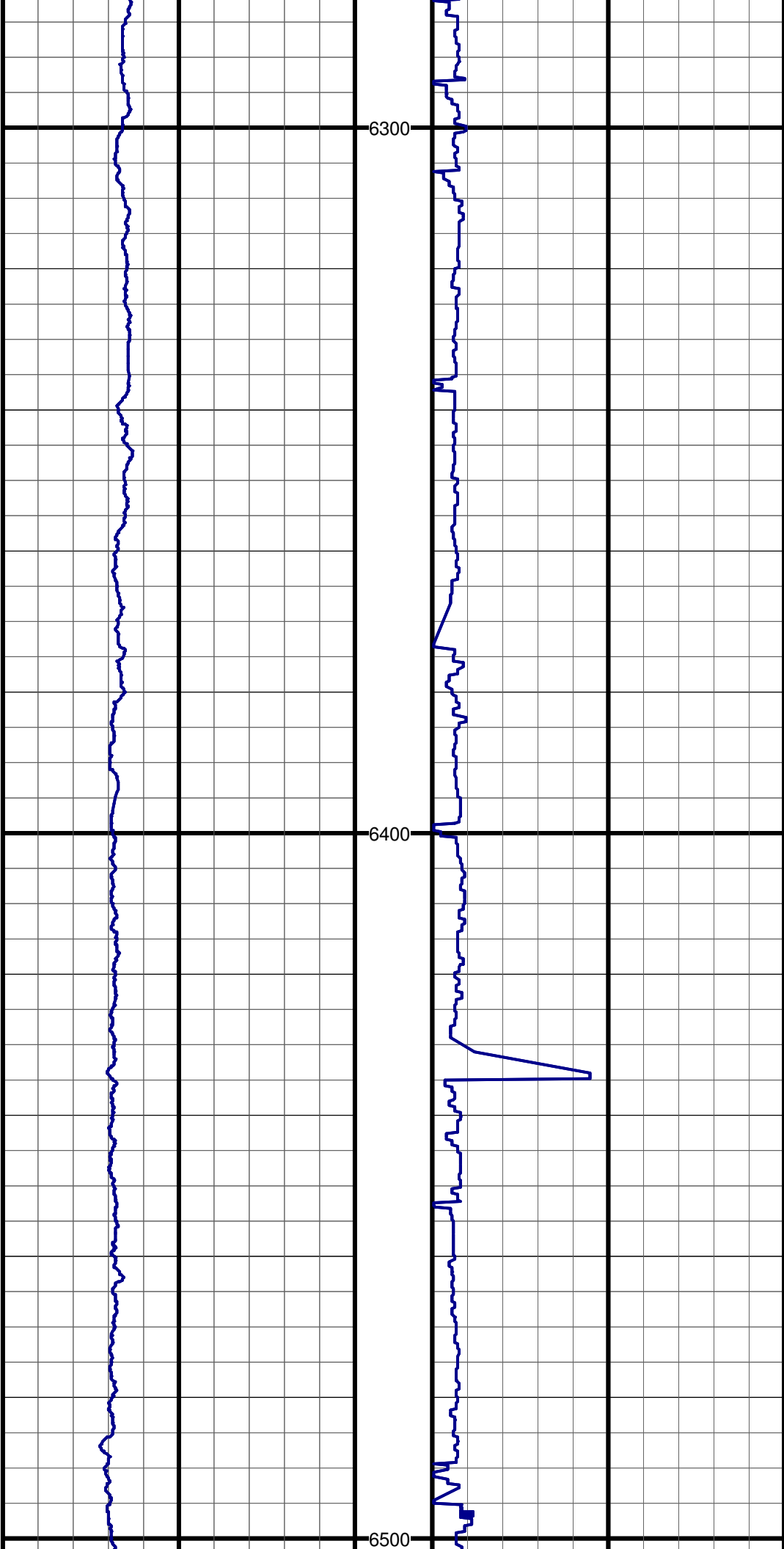
#12 TVD:6076.9 MD:6099.0 I:10.3 A:314.9 VS:-147.4

#13 TVD:6138.9 MD:6162.0 I:10.0 A:314.8 VS:-155.3

#14 TVD:6201.7 MD:6226.0 I:11.8 A:318.4 VS:-164.1

#15 TVD:6232.9 MD:6258.0 I:14.0 A:321.7 VS:-169.6

#16 TVD:6263.9 MD:6290.0 I:14.5 A:322.3 VS:-175.8



#17 TVD:6293.9 MD:6321.0 I:14.9 A:321.2 VS:-182.0

#18 TVD:6324.8 MD:6353.0 I:15.7 A:315.9 VS:-188.3

#19 TVD:6355.6 MD:6385.0 I:16.0 A:307.2 VS:-194.0

#20 TVD:6385.3 MD:6416.0 I:16.7 A:298.1 VS:-198.7

#21 TVD:6415.9 MD:6448.0 I:17.5 A:289.1 VS:-202.5

#22 TVD:6446.4 MD:6480.0 I:17.4 A:282.5 VS:-205.1

#23 TVD:6477.1 MD:6512.0 I:16.5 A:273.9 VS:-206.4

