



Digital Drilling Data  
Systems, LLC

# GeoLogPlot

(Scale: 5":100' (100'))

Company : Cathedral Energy Services

State: Co

Well: Flanigan 1A-6H

County: Weld

Field: Dj Basin

Country: USA

Well ID : 05123356900000

Job Number: 125429

Location:

Elev KB: 5010

Operator 1 : Encana Oil & Gas

Elev DF: 13

Operator 2: Eric Reicheneker

Elev GL: 4997

Comment 1:

Comment 2:

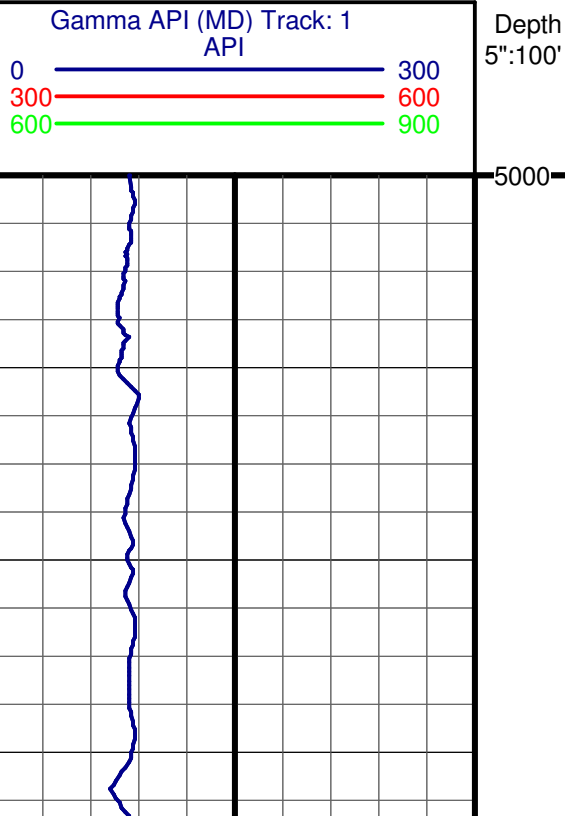
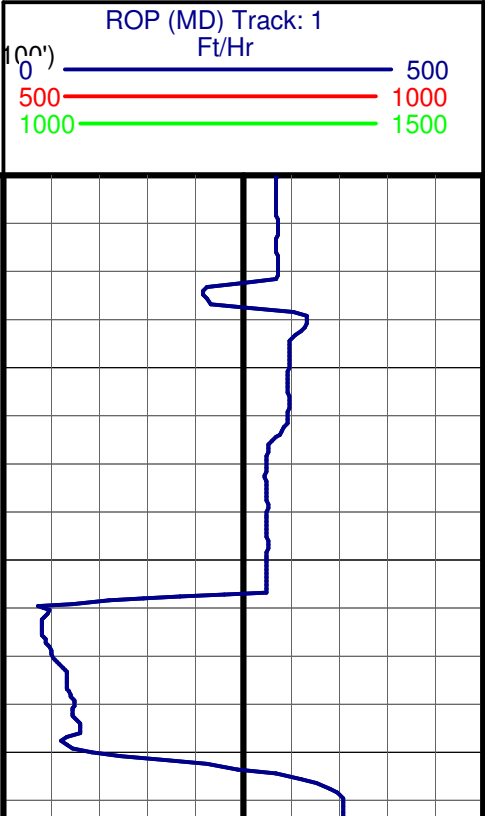
Comment 3:

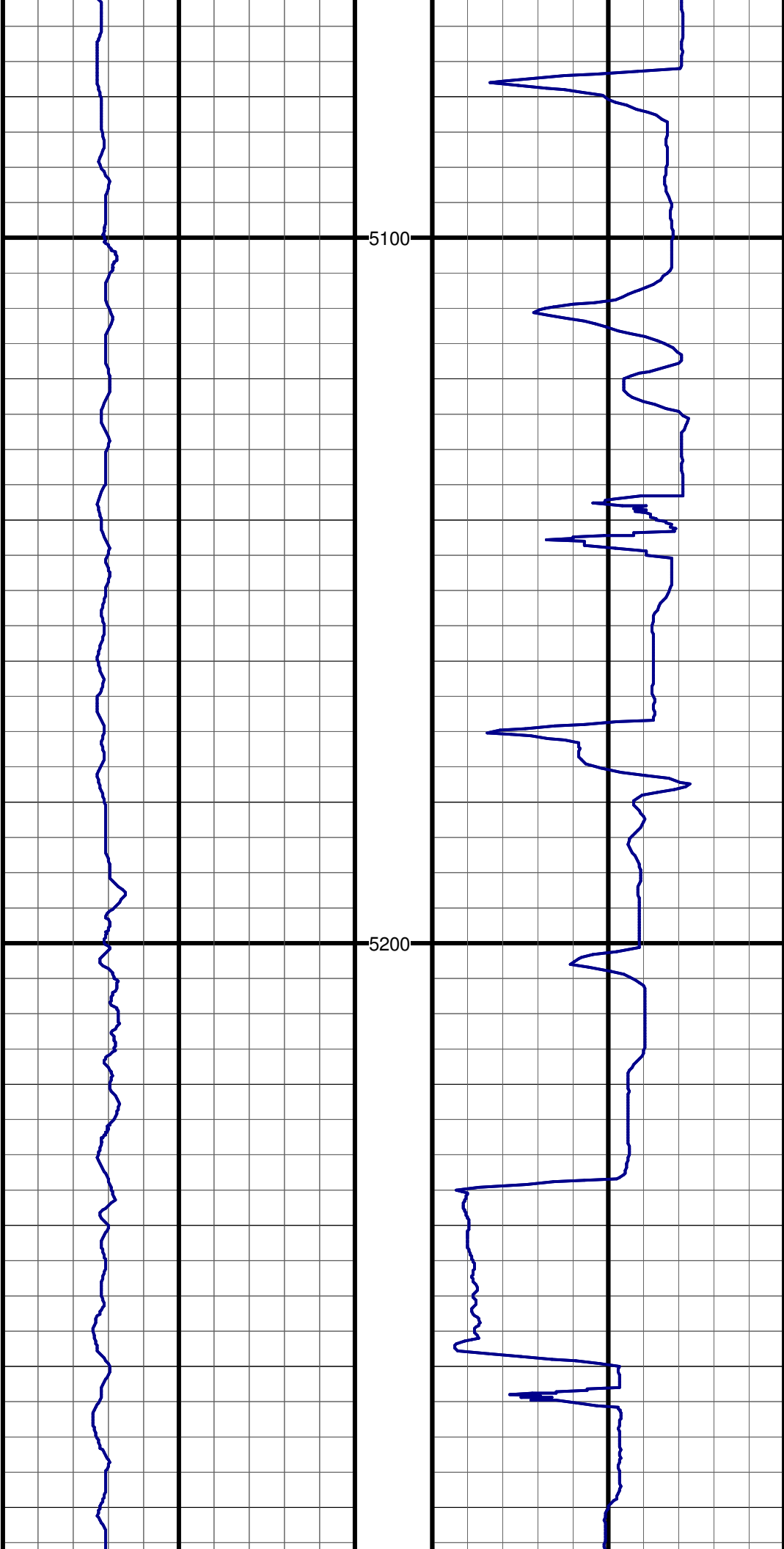
Comment 4:

Comment 5:

Hole Data			Casing Record		
Size	From	To	Size	From	To
12.25	0	1028	9.625	0	999
8.75	0	7425	7	0	7418
6.125	0	11531	4.5	0	11500

Tool Run Data	Run #1	Run #2	Run #3	Run #4	Run #5
Tool S/N	1366	1366	197		
Cal Factor	3.83	3.83	3.44		
Gamma Offset	38	38	38		
Start Depth	5000	1028	7425		
Start Date	7/18/12	7/21/12	7/26/12		
Start Time	13:00:00	00:30:00	18:00		
End Depth	1028	7425	11531		
End Date	7/18/12	7/24/12	7/30/12		
End Time	23:30:00	20:00:00	22:00:00		

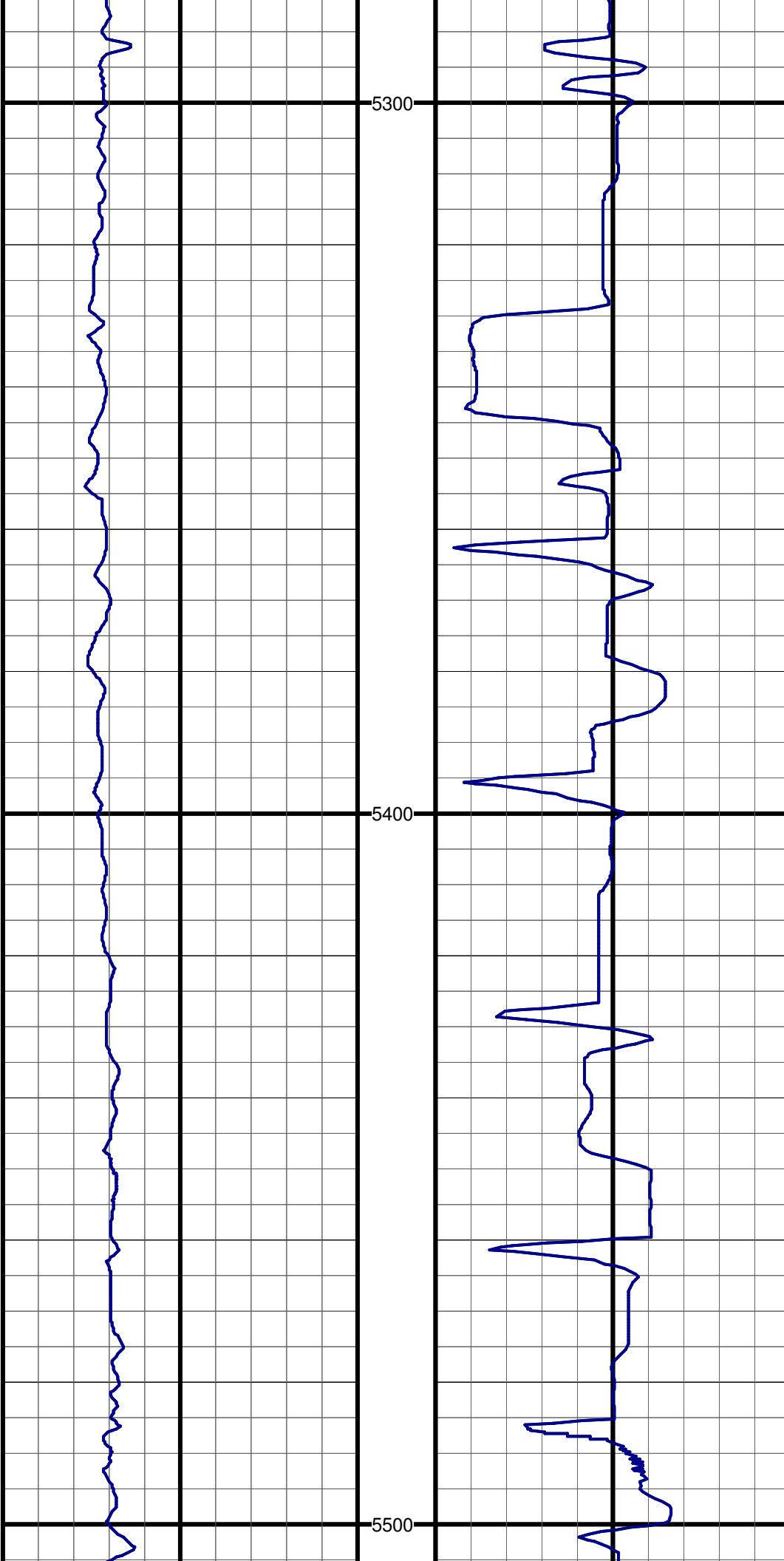




#2 MD:5086.0 TVD:5040.6 I:12.8 A:288.8 VS:-110.3

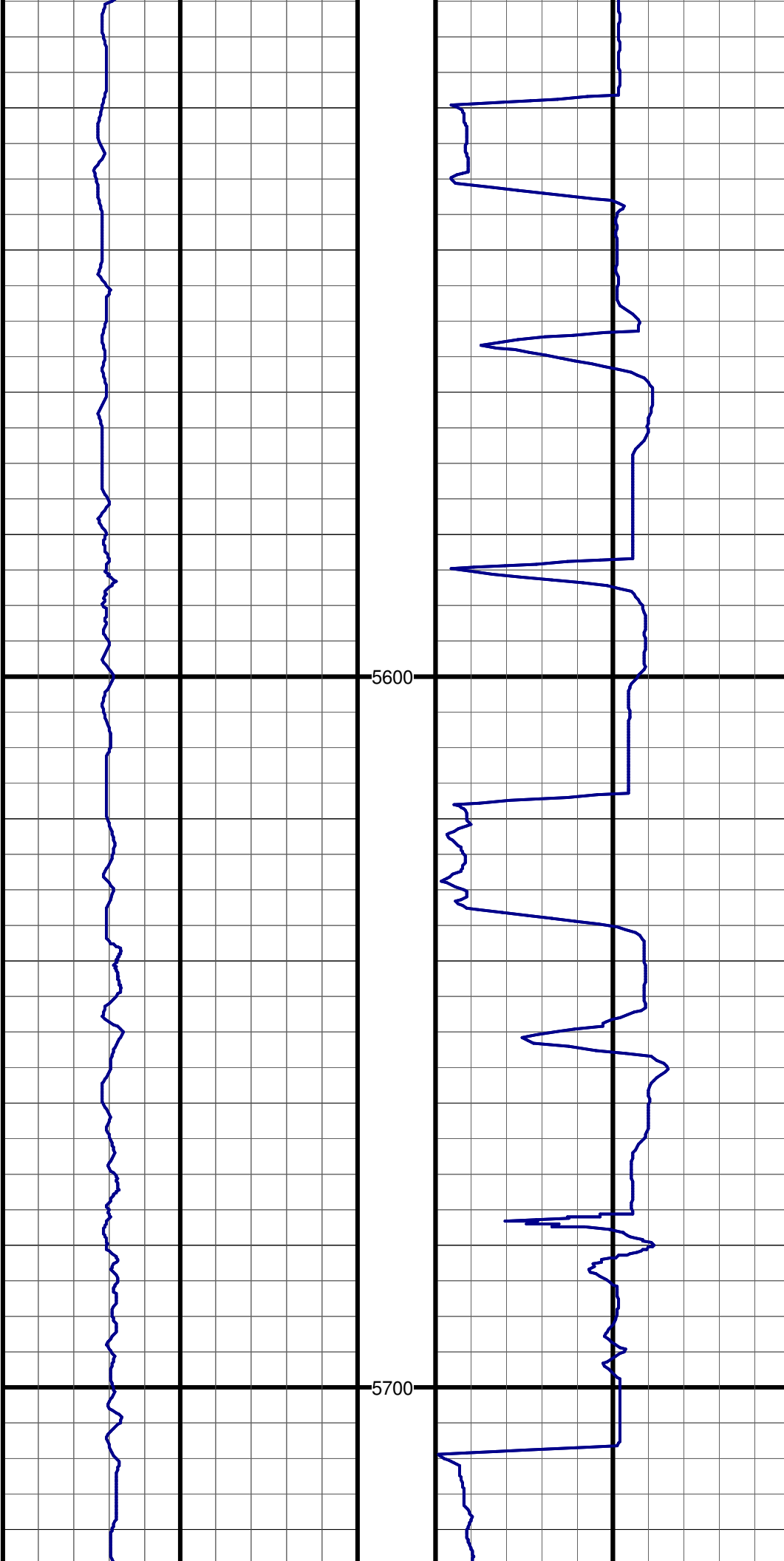
#3 MD:5181.0 TVD:5133.7 I:10.5 A:286.9 VS:-116.2

#4 MD:5276.0 TVD:5226.7 I:12.7 A:288.9 VS:-122.1



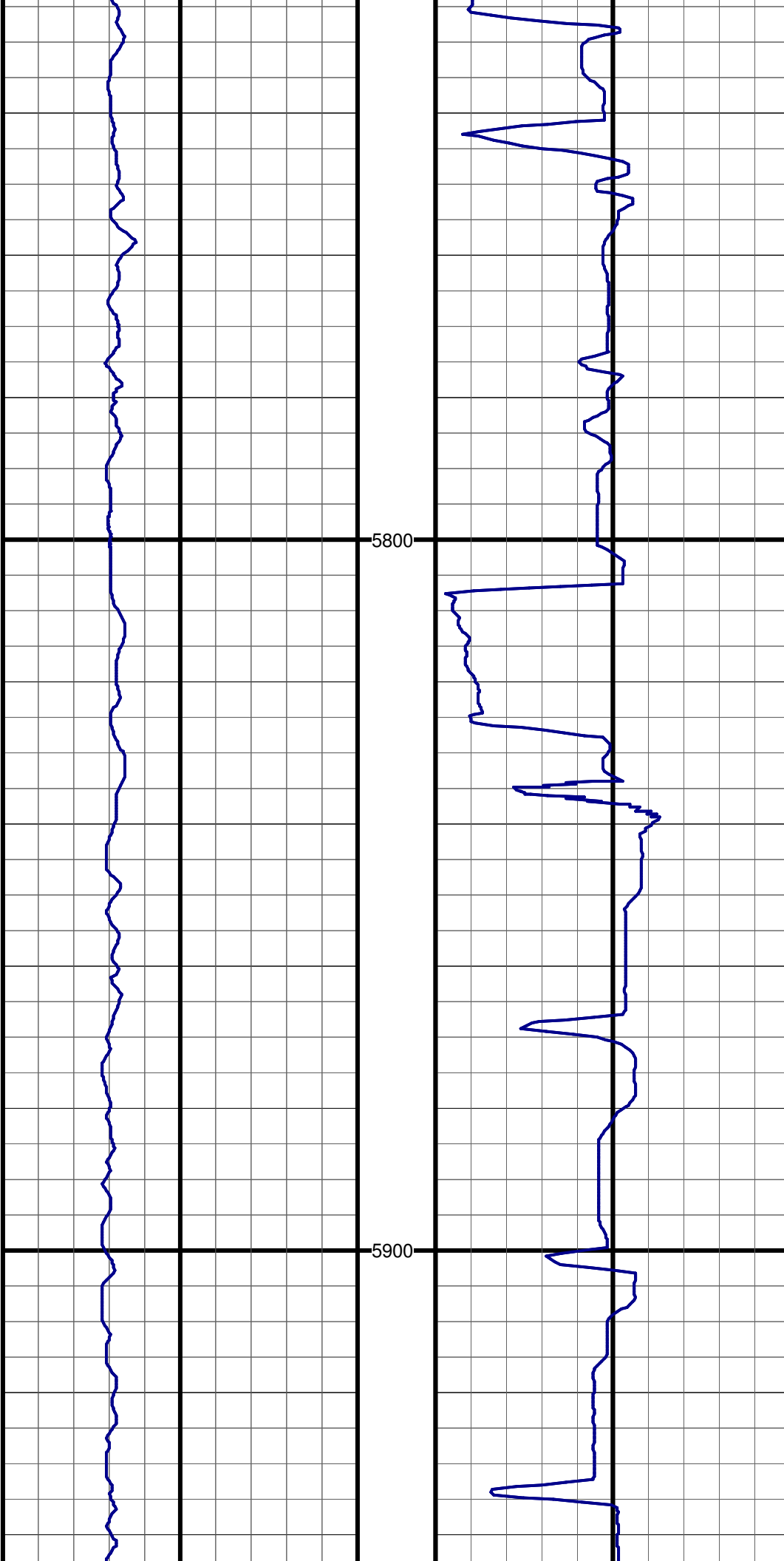
#5 MD:5372.0 TVD:5320.1 I:14.3 A:290.8 VS:-129.7

#6 MD:5467.0 TVD:5412.6 I:12.0 A:290.7 VS:-137.4



#7 MD:5562.0 TVD:5505.4 I:12.6 A:289.4 VS:-144.3

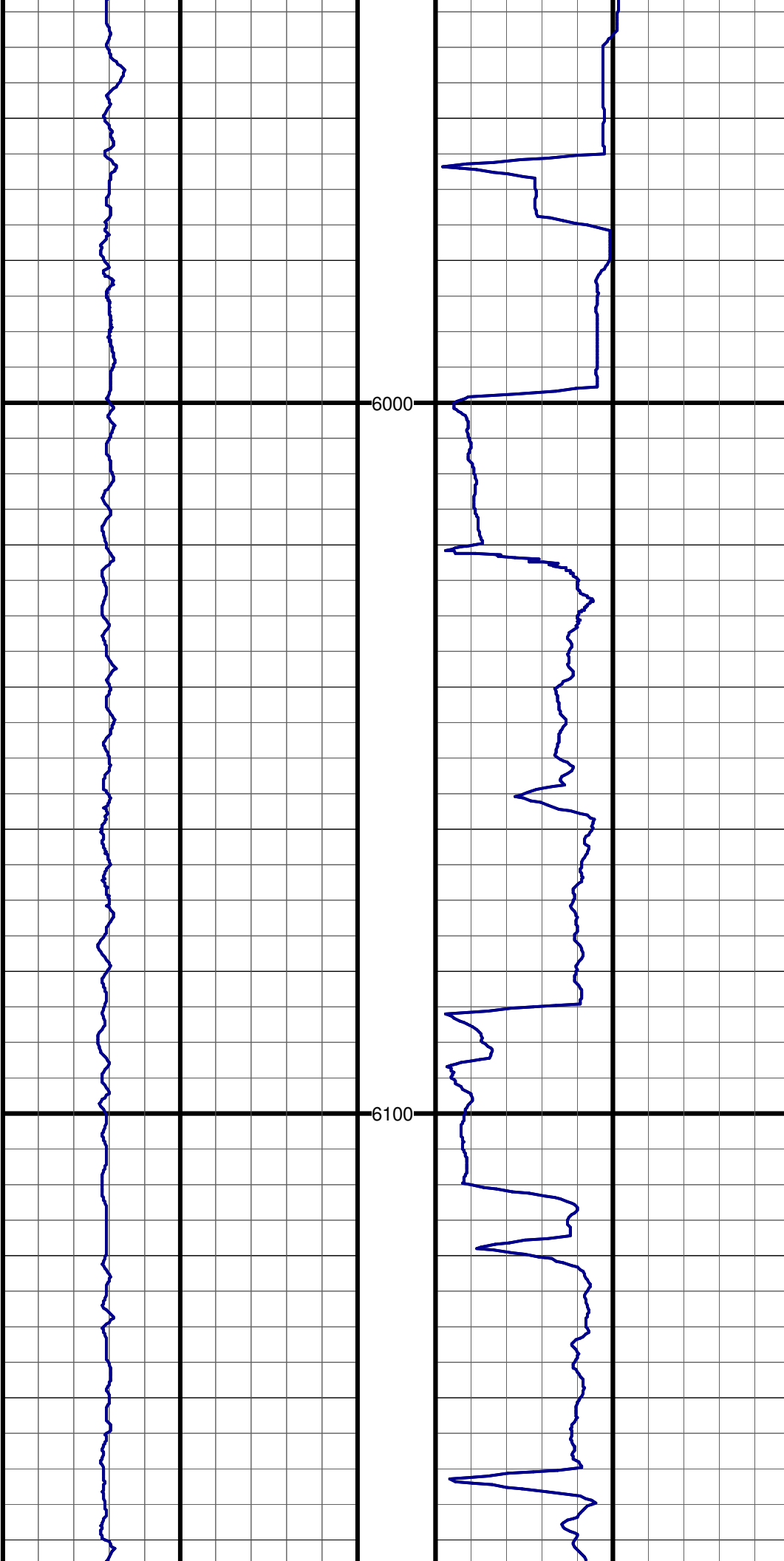
#8 MD:5657.0 TVD:5598.3 I:11.5 A:287.0 VS:-150.5



#9 MD:5752.0 TVD:5691.3 I:12.0 A:289.8 VS:-156.7

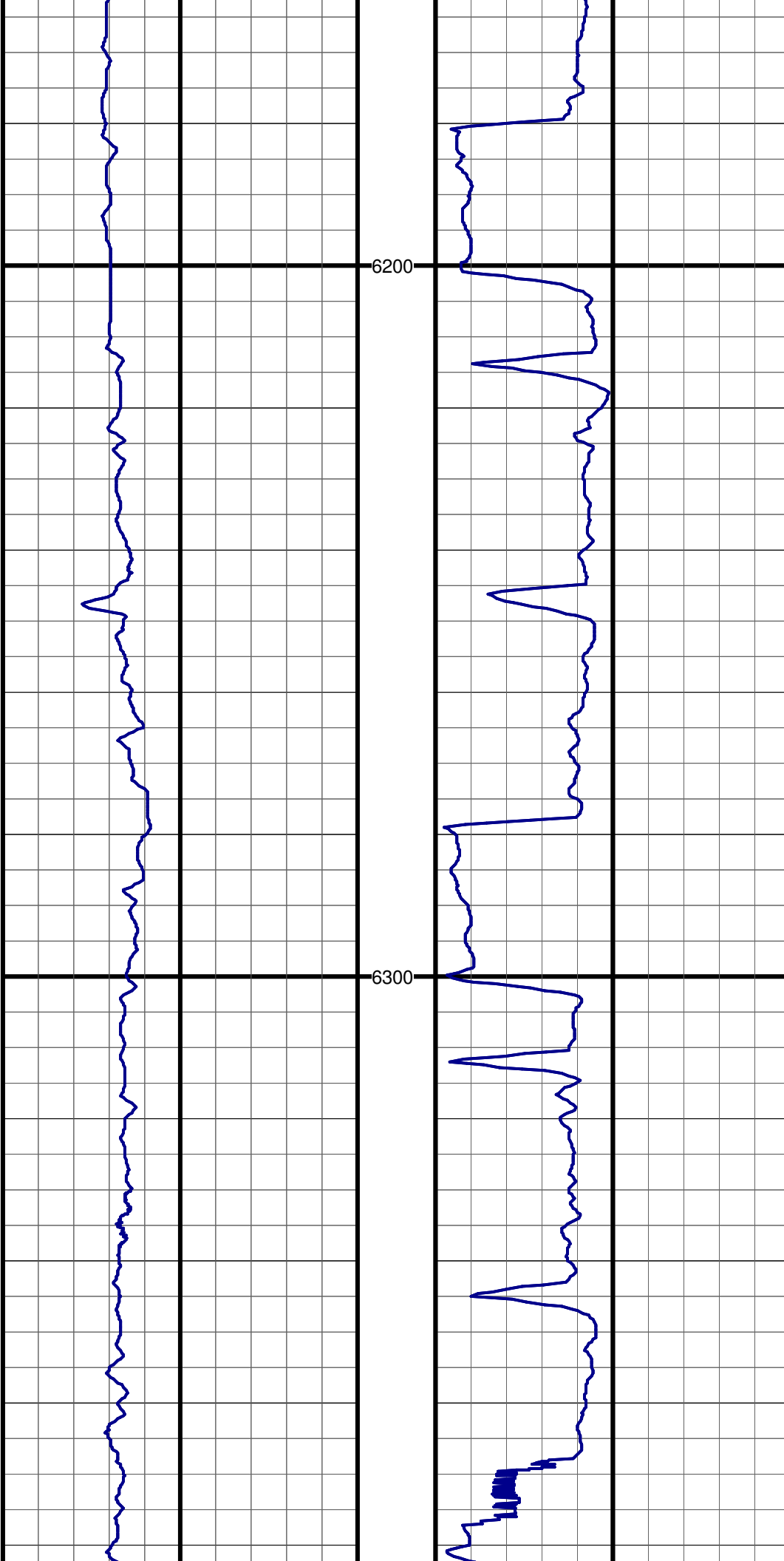
#10 MD:5847.0 TVD:5784.1 I:12.9 A:288.6 VS:-163.4

#11 MD:5942.0 TVD:5877.1 I:10.1 A:287.7 VS:-169.3



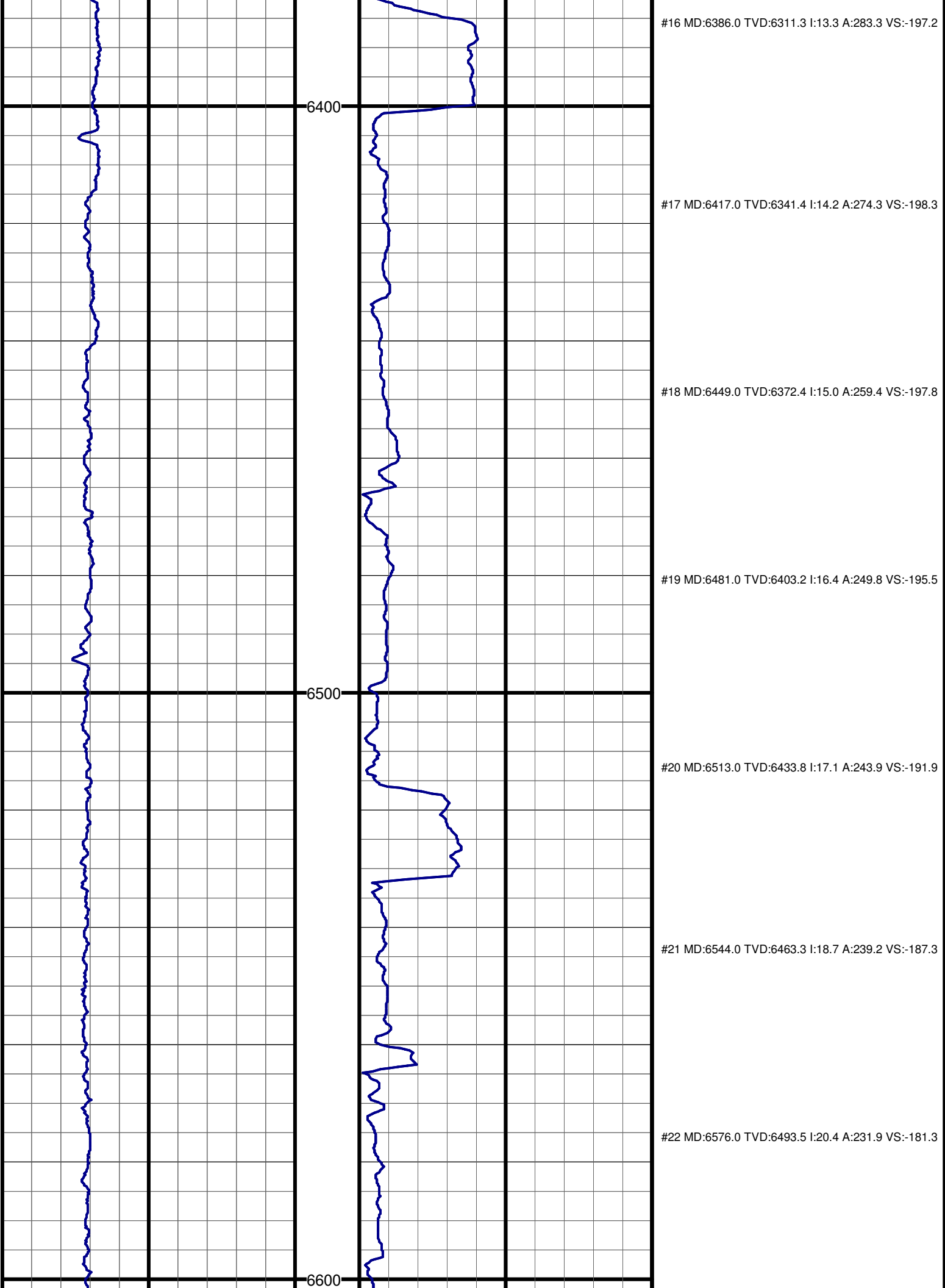
#12 MD:6037.0 TVD:5970.4 I:12.0 A:288.8 VS:-175.0

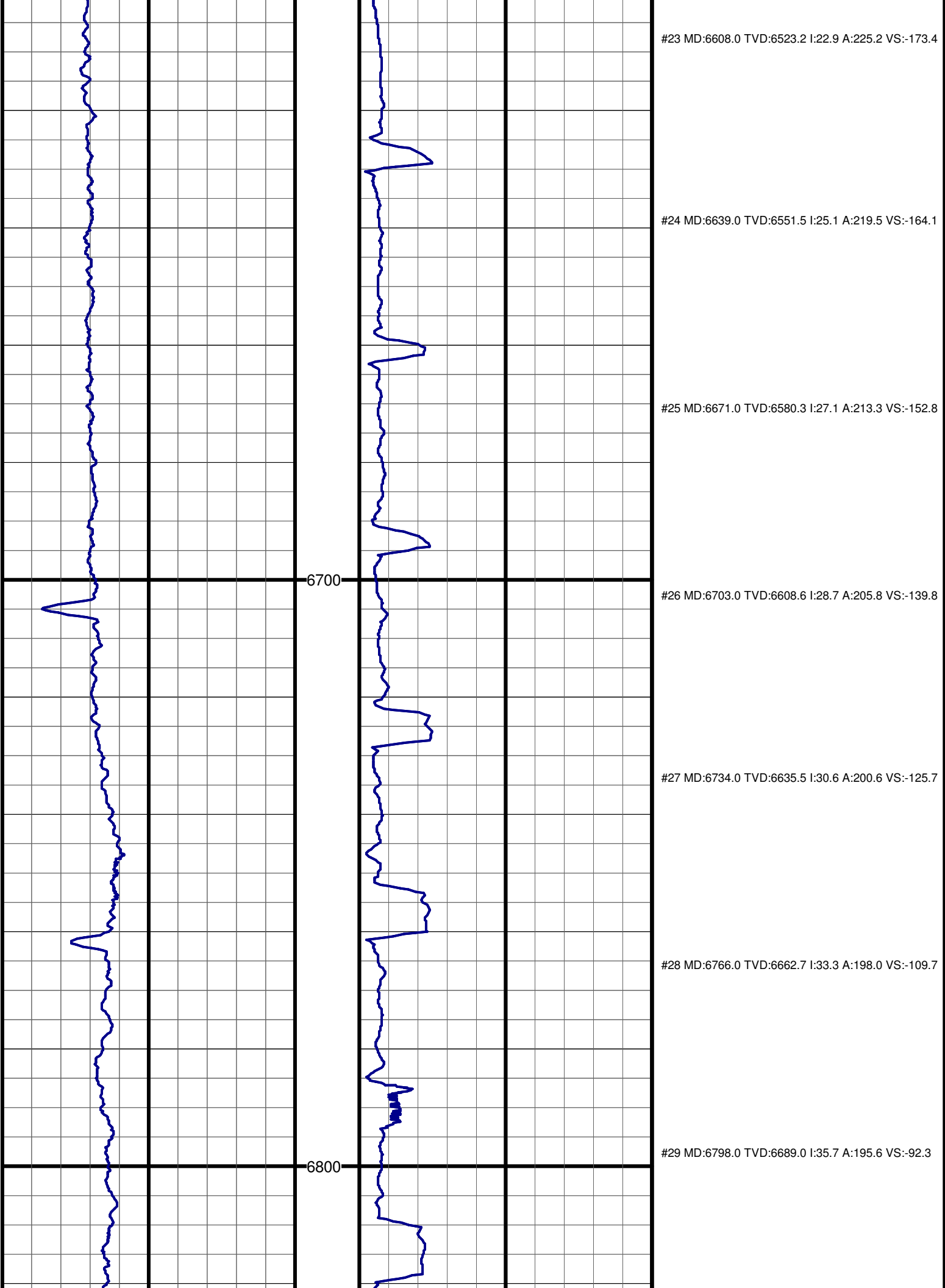
#13 MD:6132.0 TVD:6063.3 I:11.9 A:289.6 VS:-181.5

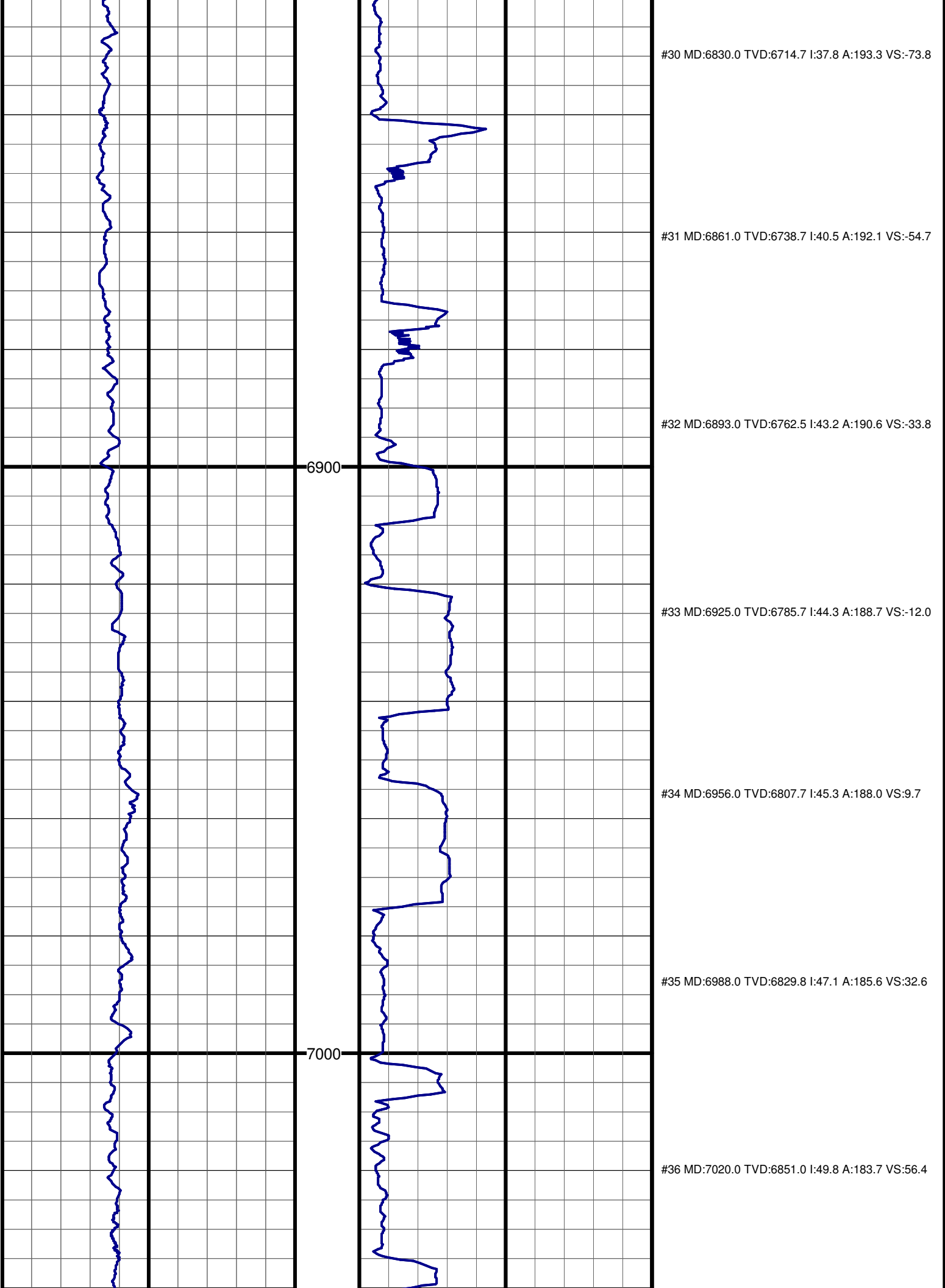


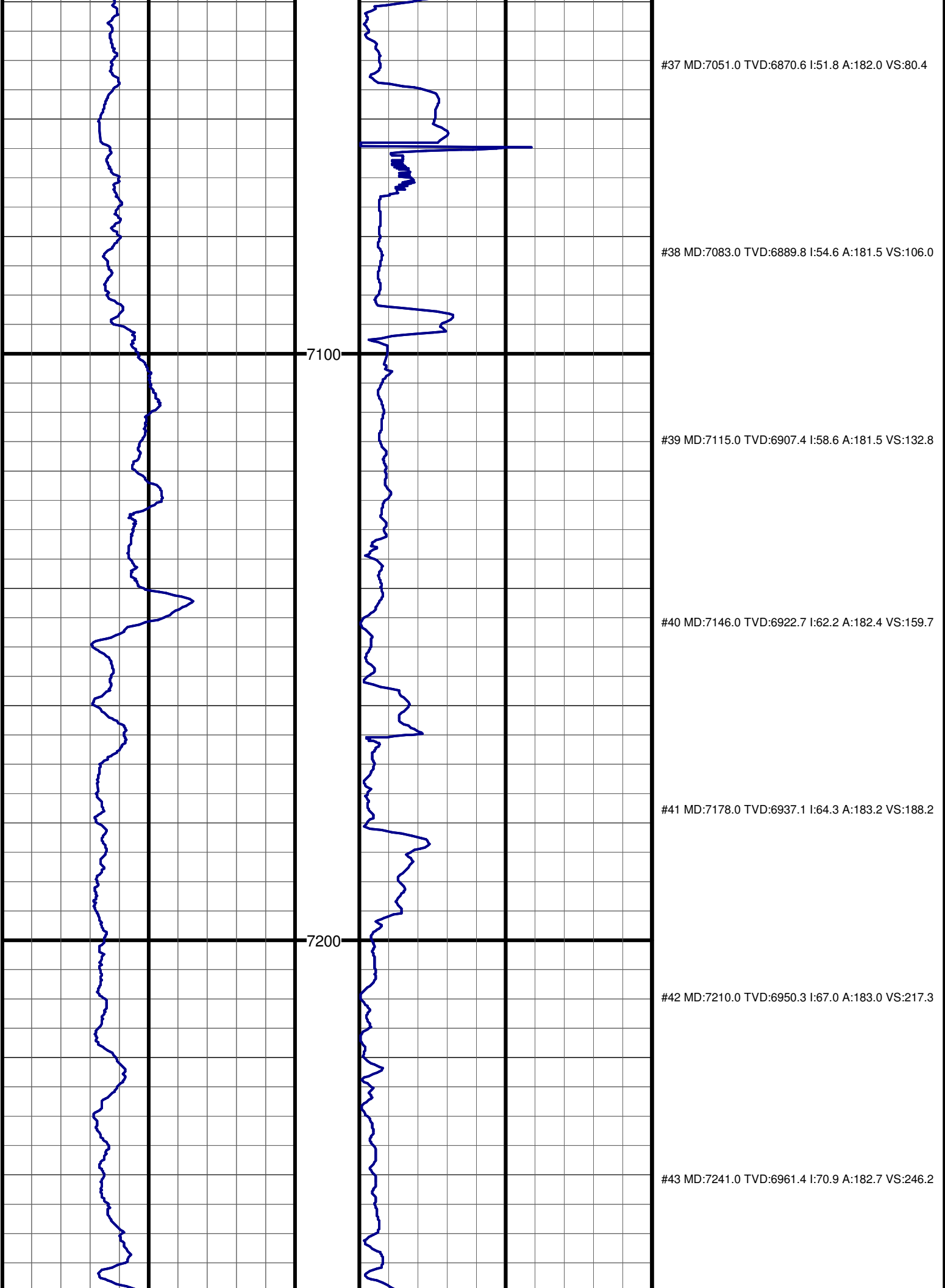
#14 MD:6227.0 TVD:6156.2 I:12.1 A:286.2 VS:-187.5

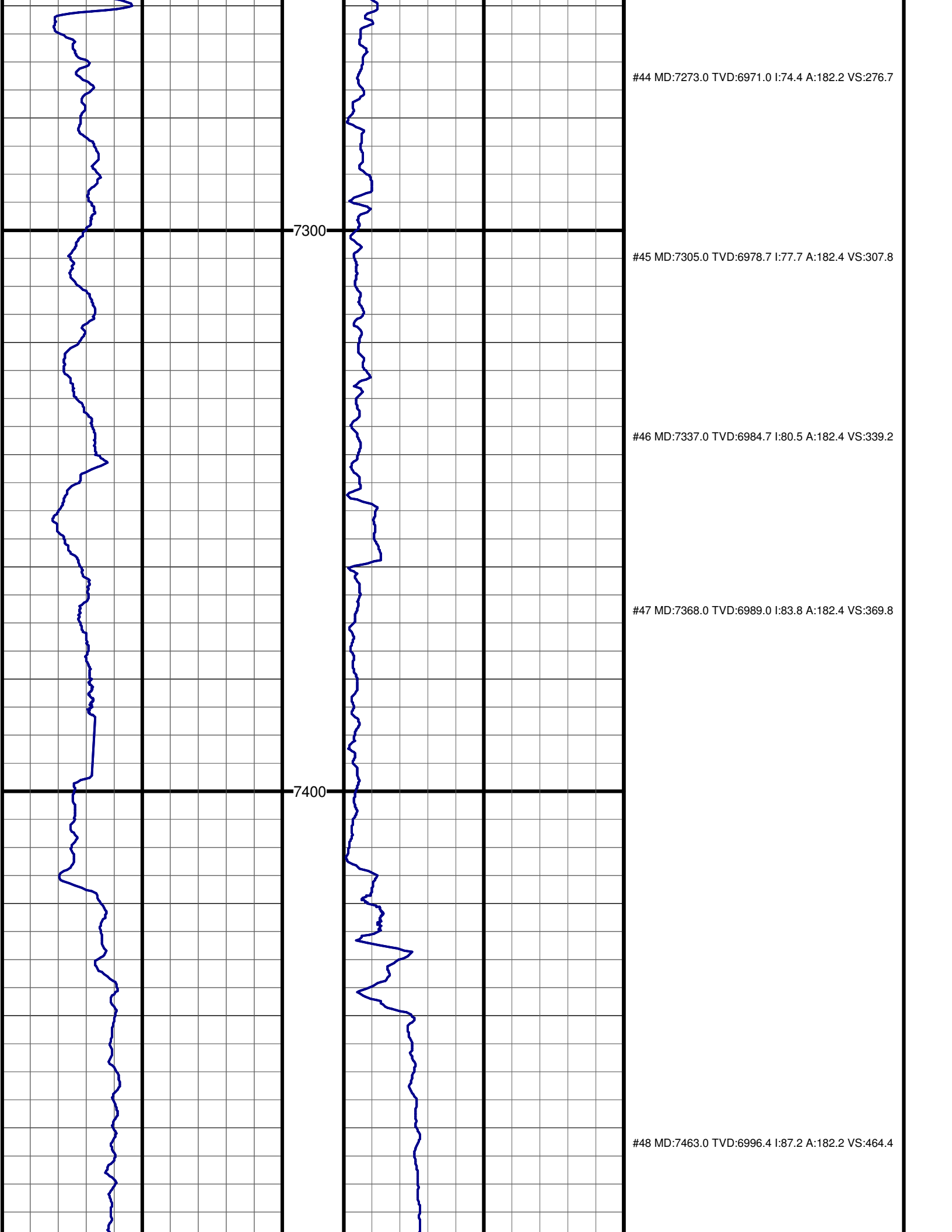
#15 MD:6322.0 TVD:6249.0 I:13.1 A:286.7 VS:-193.4

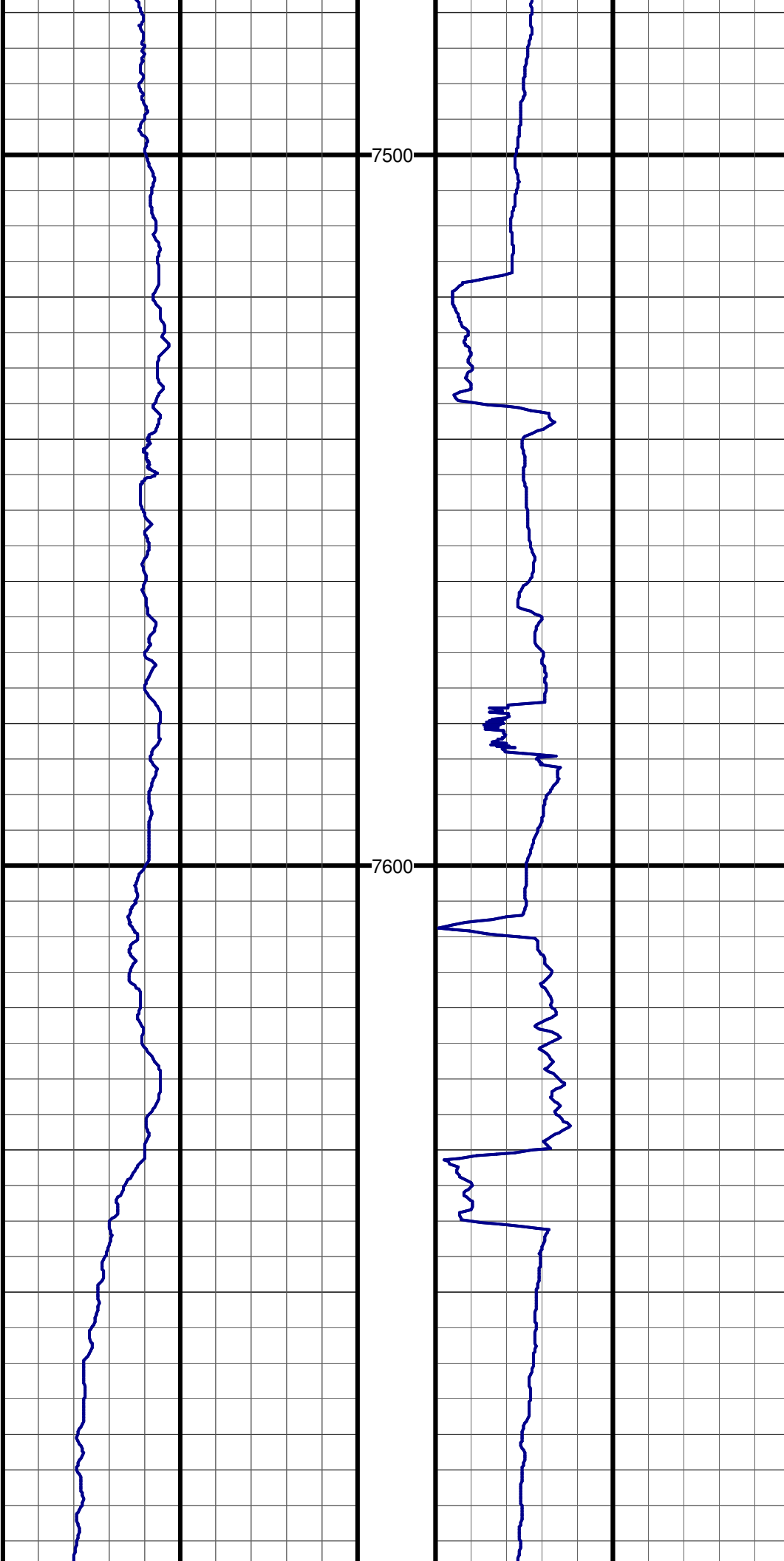








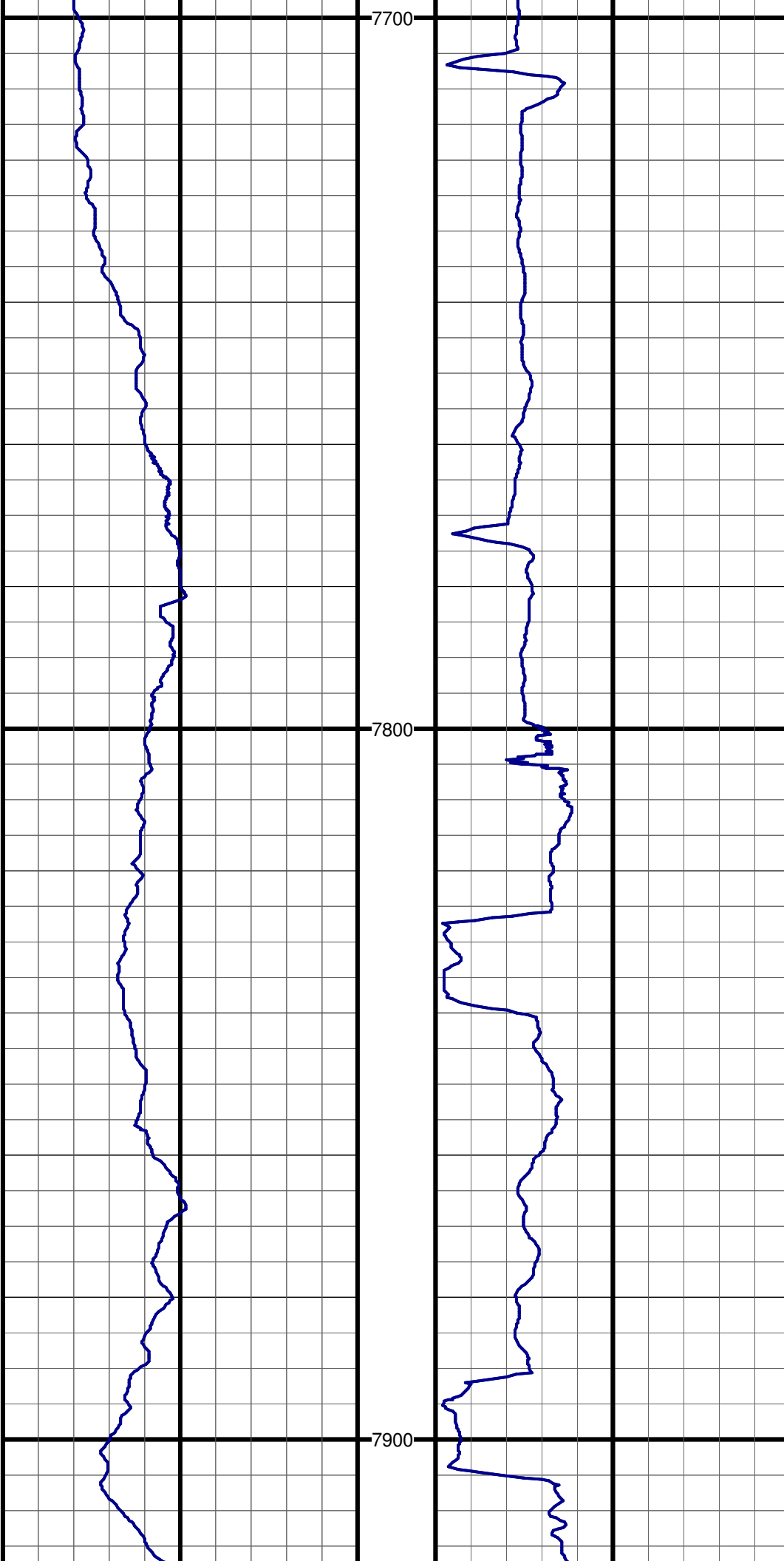




#49 MD:7527.0 TVD:6998.2 I:89.7 A:182.6 VS:528.4

#50 MD:7590.0 TVD:6997.8 I:91.0 A:182.4 VS:591.3

#51 MD:7653.0 TVD:6997.0 I:90.4 A:181.9 VS:654.2

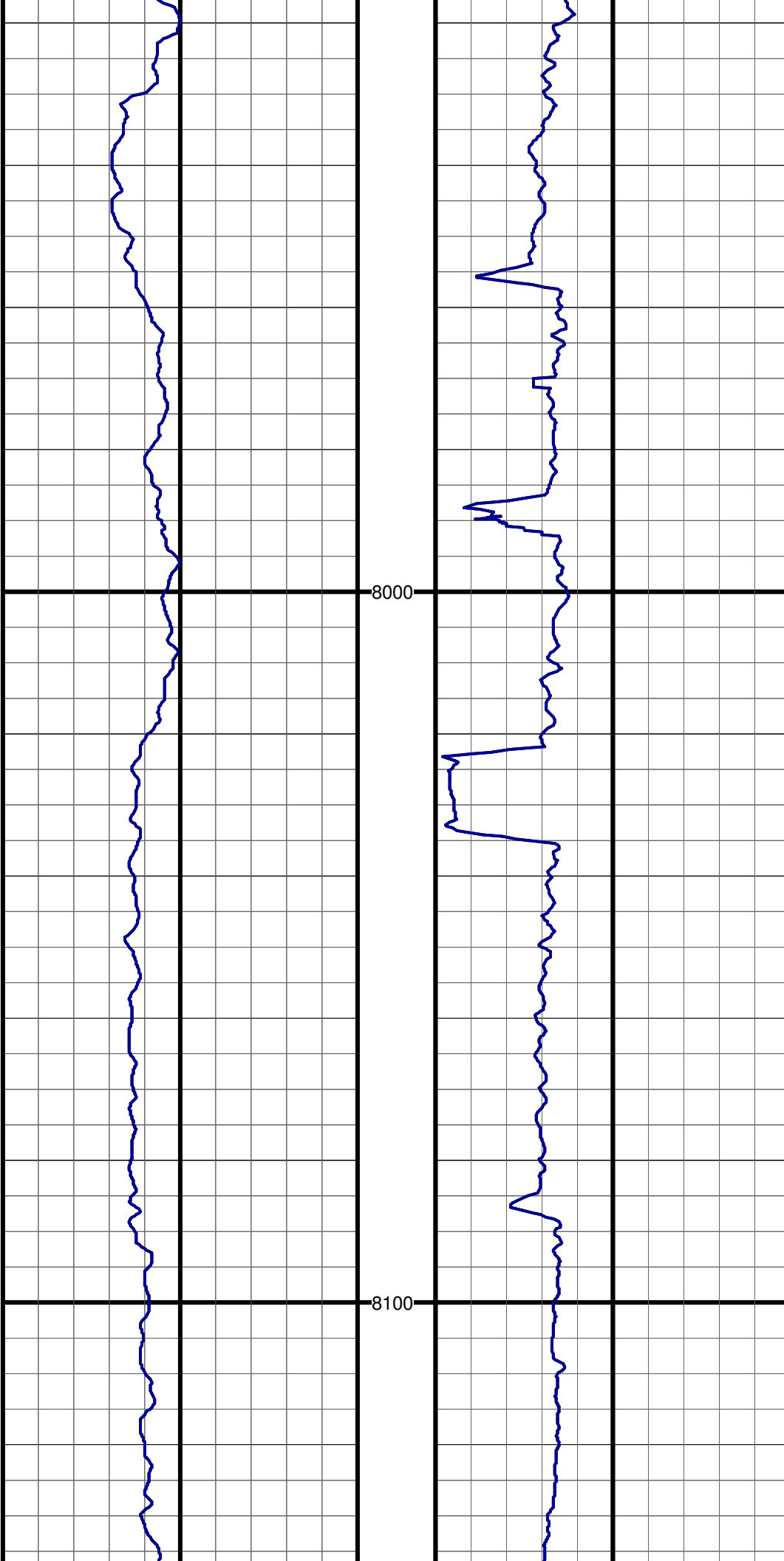


#52 MD:7717.0 TVD:6996.6 I:90.3 A:181.5 VS:718.2

#53 MD:7780.0 TVD:6996.9 I:89.2 A:181.4 VS:781.2

#54 MD:7844.0 TVD:6997.6 I:89.5 A:179.6 VS:845.2

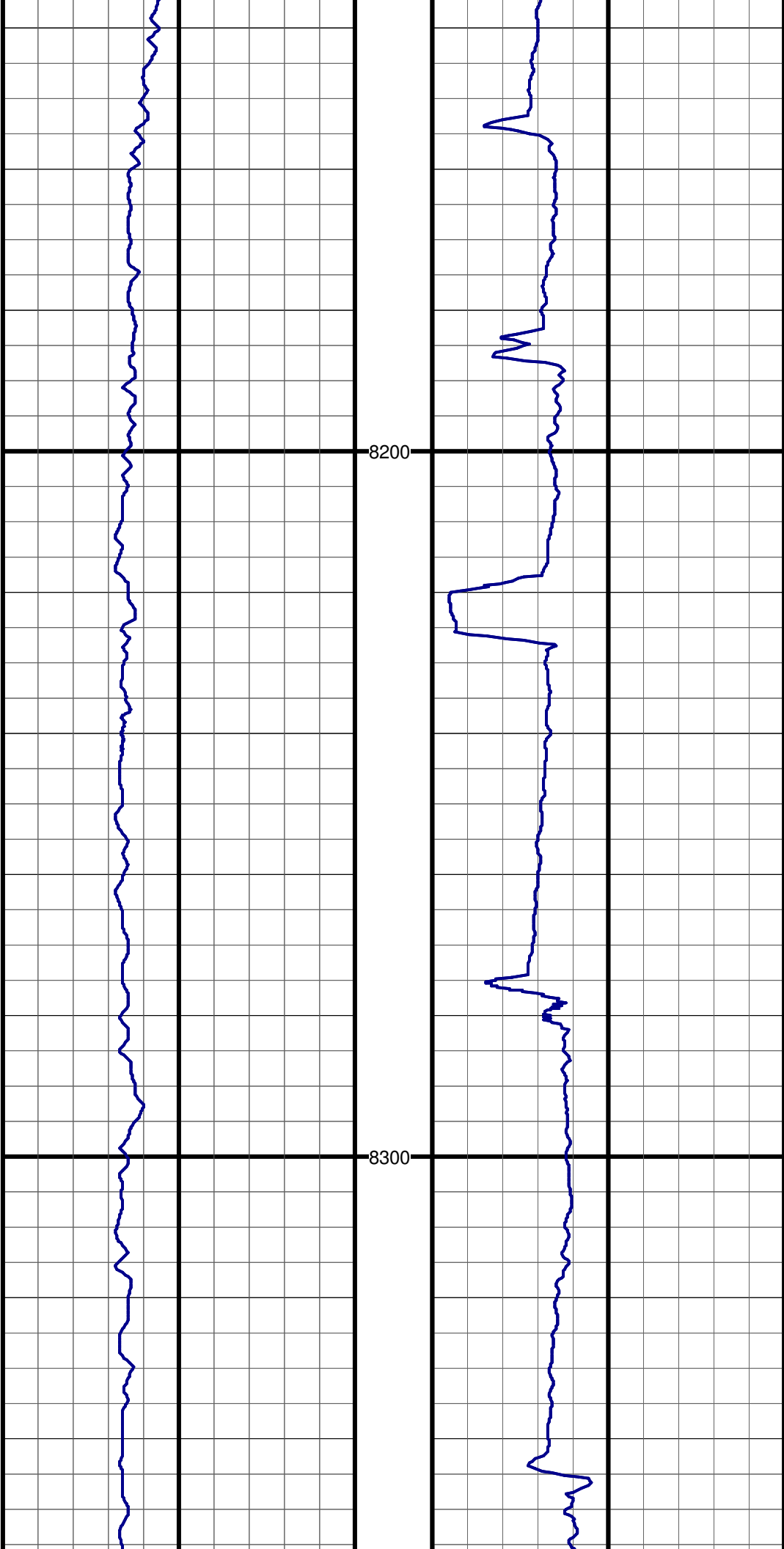
#55 MD:7907.0 TVD:6997.2 I:91.2 A:180.5 VS:908.2



#56 MD:7970.0 TVD:6995.5 I:91.9 A:179.6 VS:971.2

#57 MD:8034.0 TVD:6994.2 I:90.4 A:181.0 VS:1035.1

#58 MD:8097.0 TVD:6993.4 I:91.1 A:181.3 VS:1098.1



8200

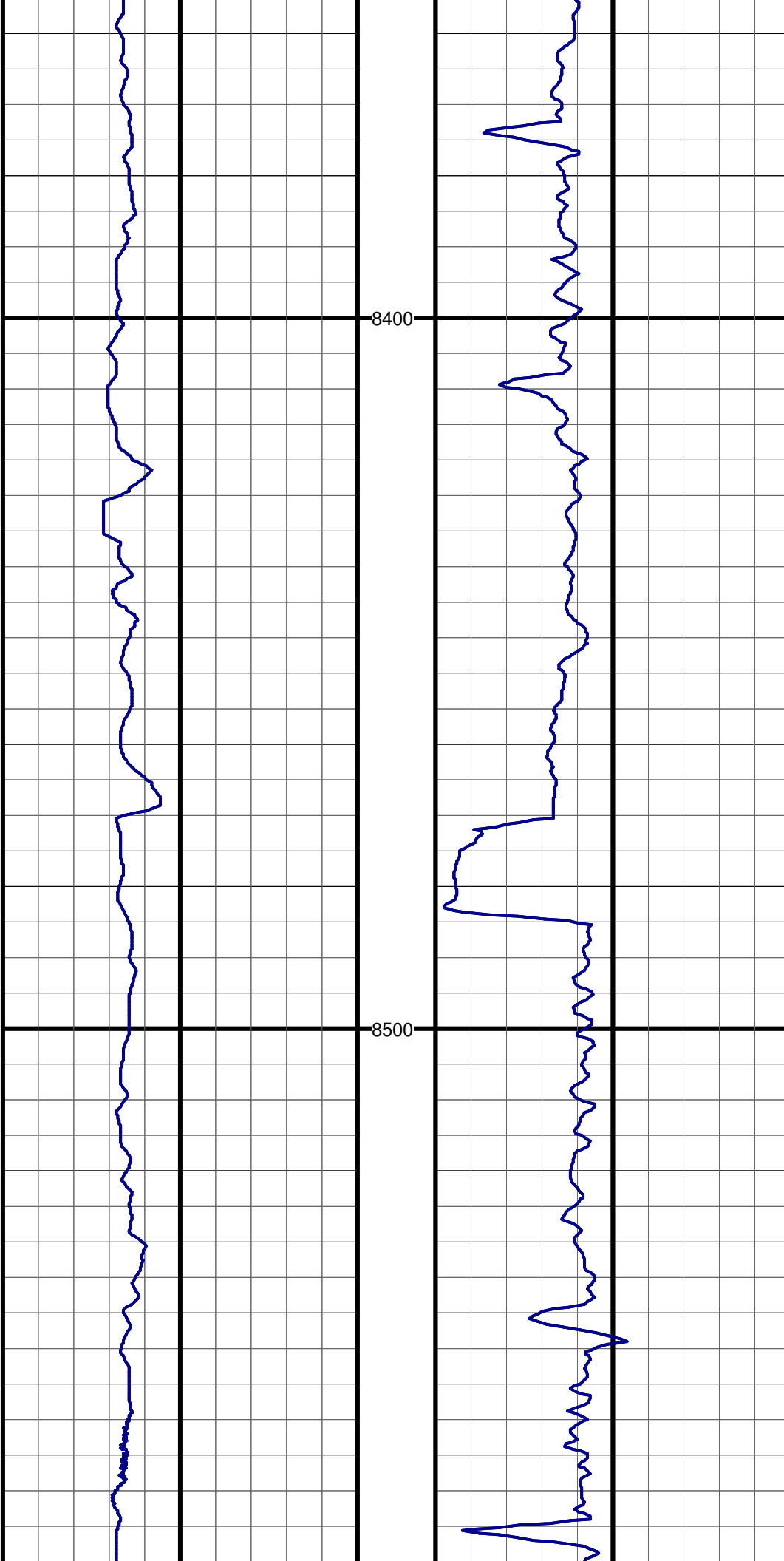
8300

#59 MD:8161.0 TVD:6992.0 I:91.5 A:181.0 VS:1162.1

#60 MD:8224.0 TVD:6990.8 I:90.7 A:179.6 VS:1225.1

#61 MD:8287.0 TVD:6990.8 I:89.3 A:179.6 VS:1288.1

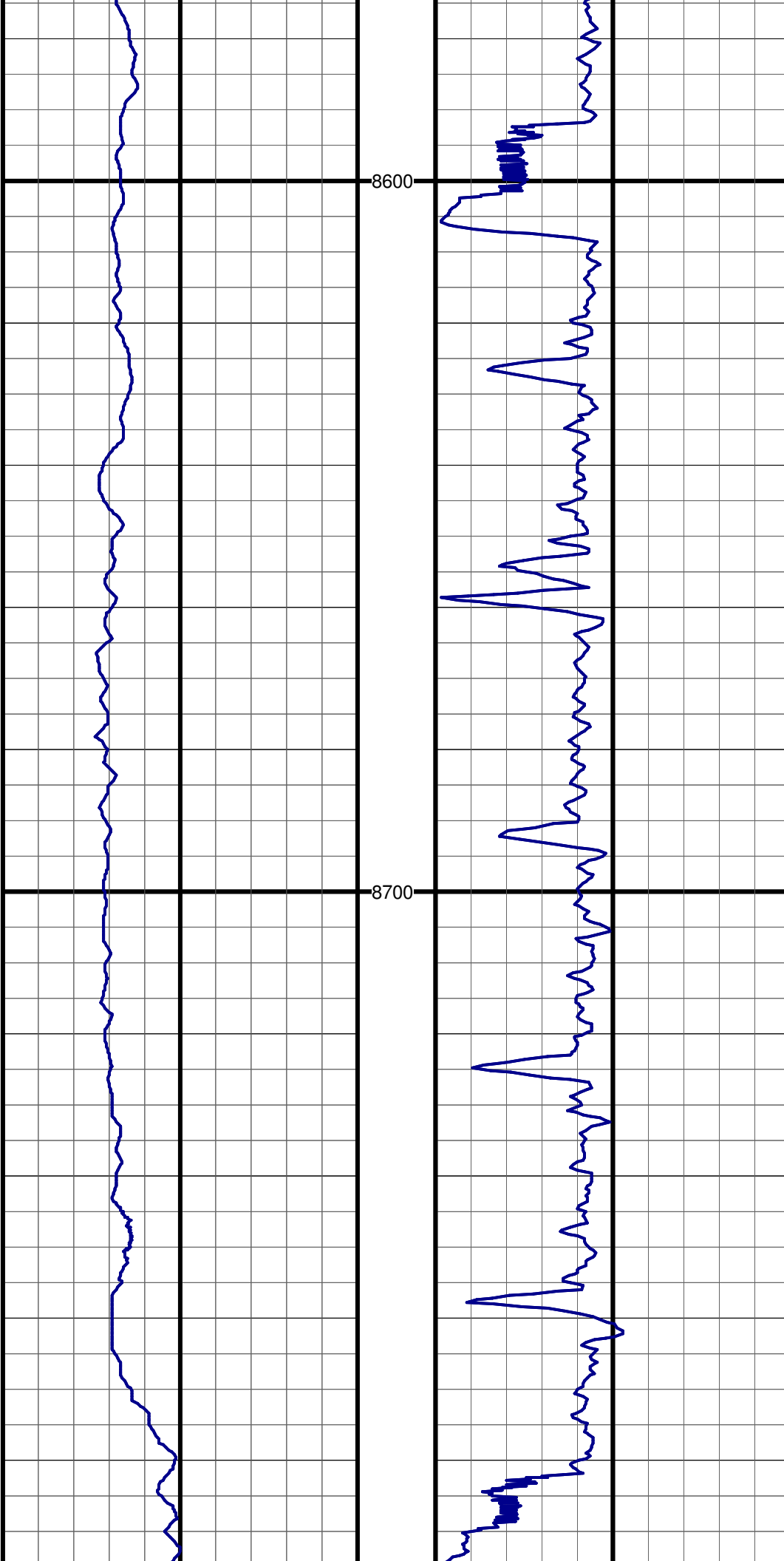
#62 MD:8351.0 TVD:6991.1 I:90.1 A:179.6 VS:1352.1



#63 MD:8414.0 TVD:6991.3 I:89.6 A:178.2 VS:1415.1

#64 MD:8478.0 TVD:6991.6 I:89.8 A:180.2 VS:1479.1

#65 MD:8541.0 TVD:6992.2 I:89.1 A:179.4 VS:1542.0

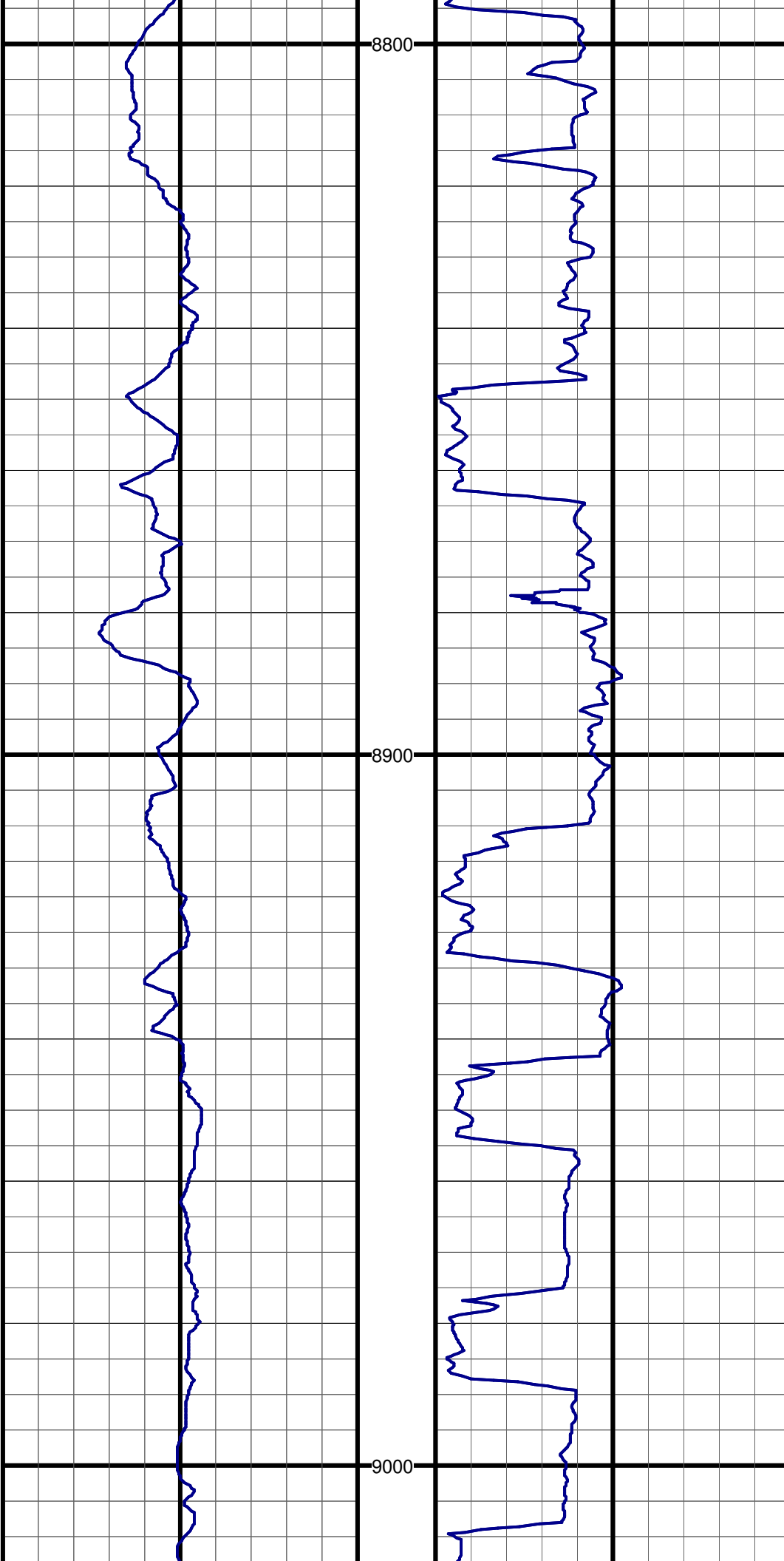


#66 MD:8605.0 TVD:6992.4 I:90.5 A:180.2 VS:1606.0

#67 MD:8668.0 TVD:6991.8 I:90.6 A:179.4 VS:1669.0

#68 MD:8731.0 TVD:6991.0 I:90.9 A:178.1 VS:1732.0

#69 MD:8794.0 TVD:6990.2 I:91.2 A:176.8 VS:1795.0

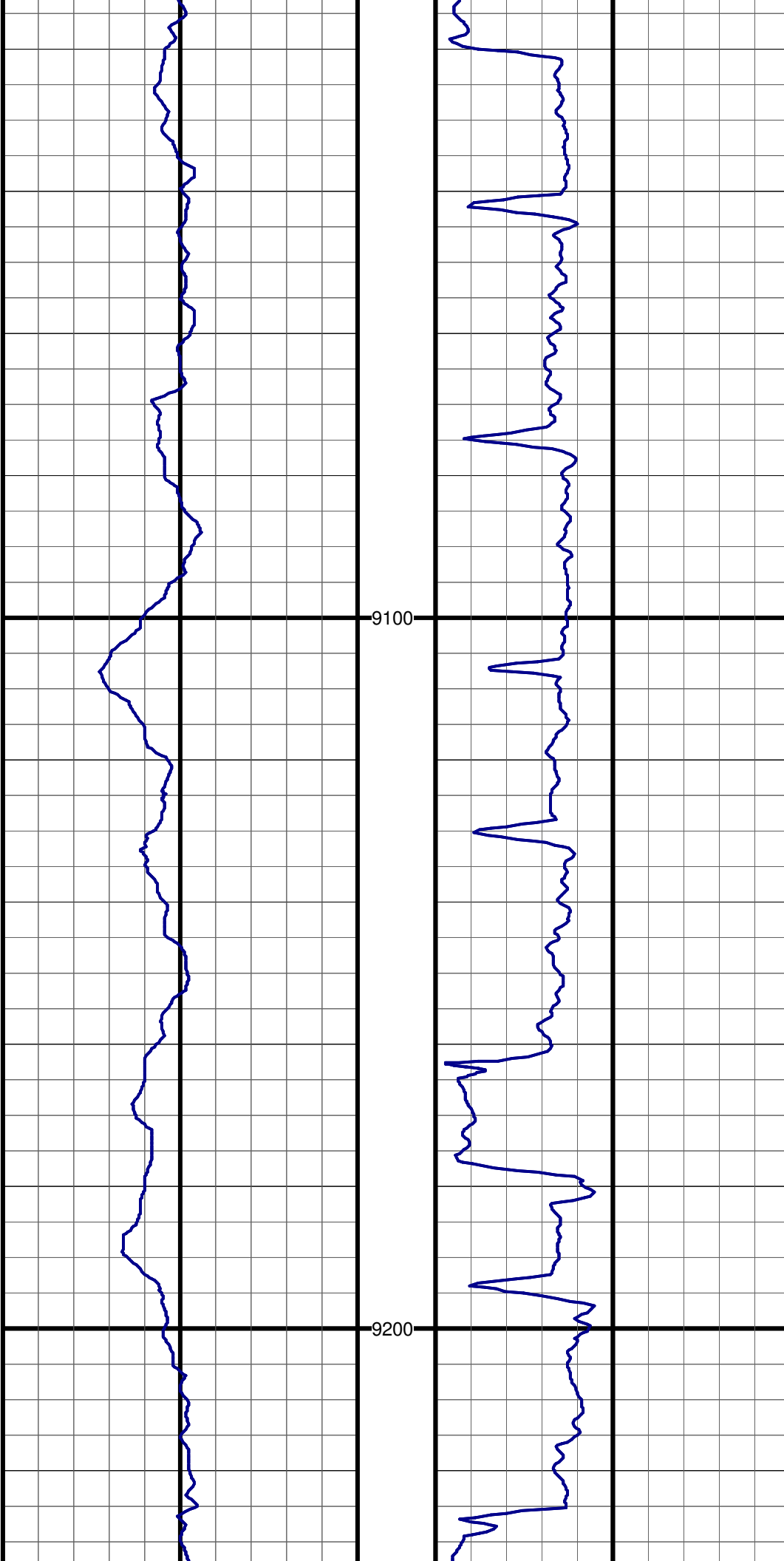


#69 MD:8795.0 TVD:6989.5 I:91.8 A:178.7 VS:1796.0

#70 MD:8858.0 TVD:6987.0 I:92.8 A:180.5 VS:1858.9

#71 MD:8922.0 TVD:6984.3 I:92.0 A:179.7 VS:1922.9

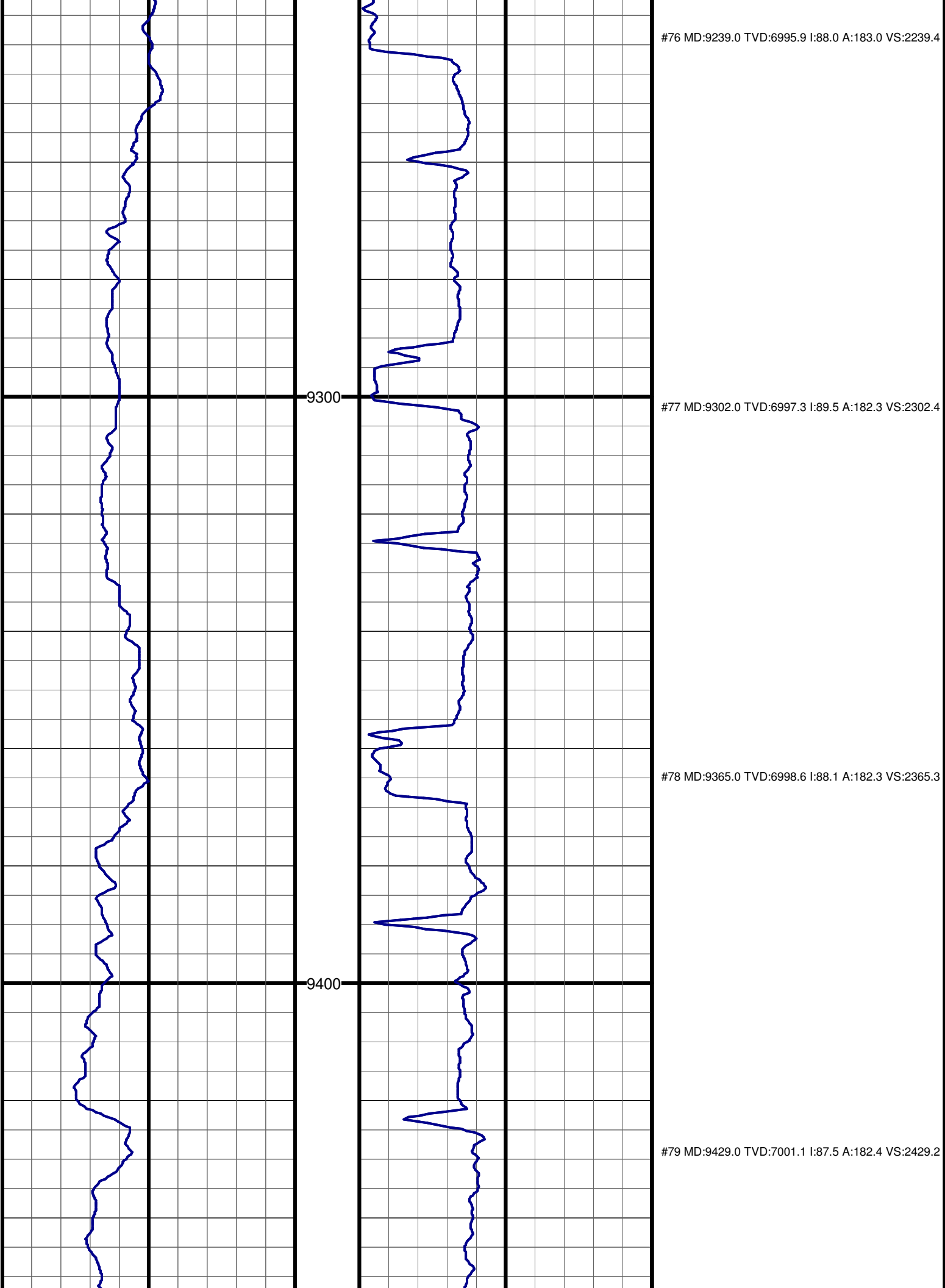
#72 MD:8985.0 TVD:6983.5 I:89.4 A:180.8 VS:1985.9

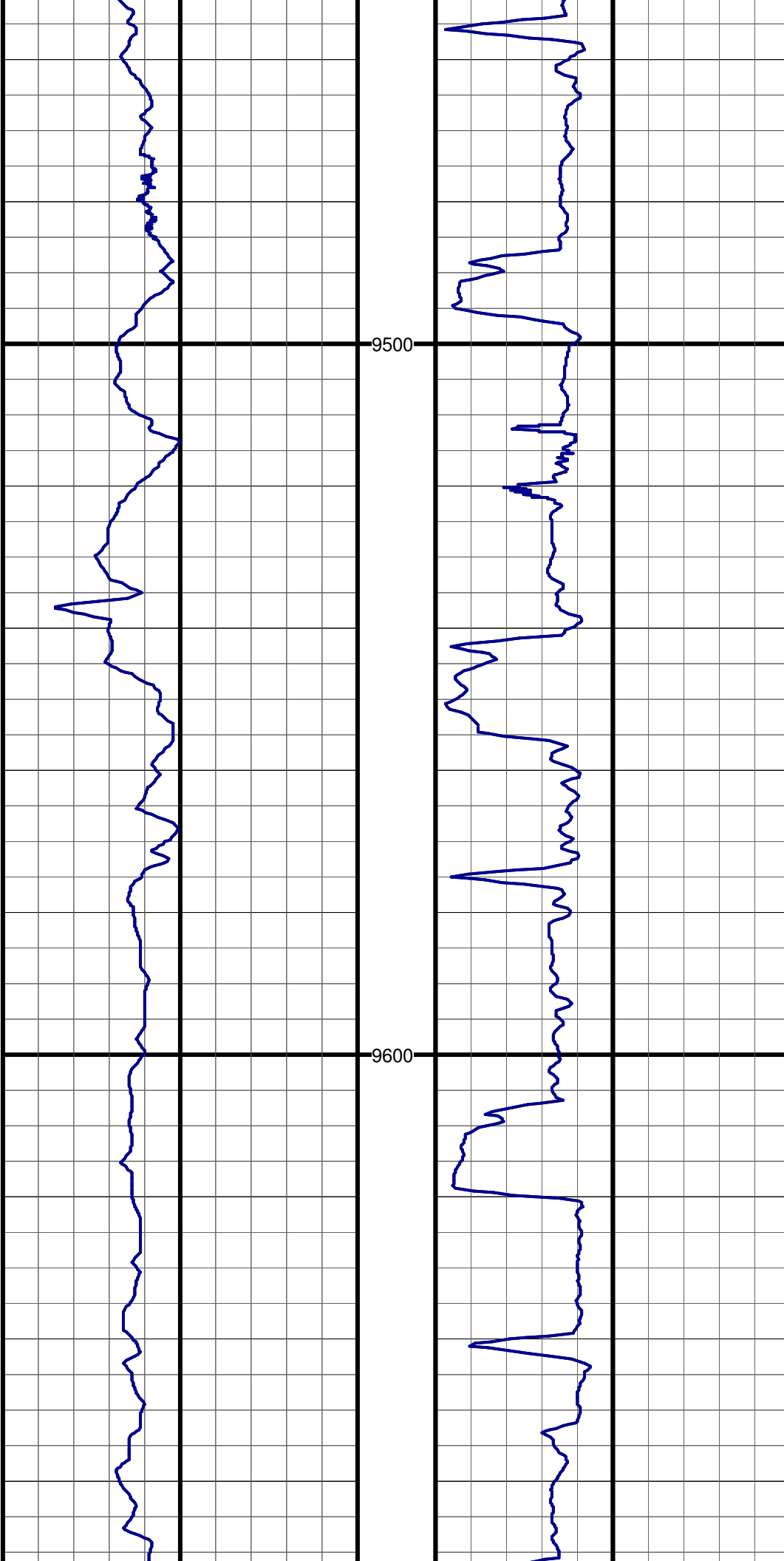


#73 MD:9048.0 TVD:6985.4 I:87.1 A:181.1 VS:2048.8

#74 MD:9112.0 TVD:6989.2 I:86.2 A:180.6 VS:2112.7

#75 MD:9175.0 TVD:6993.0 I:86.8 A:181.5 VS:2175.6

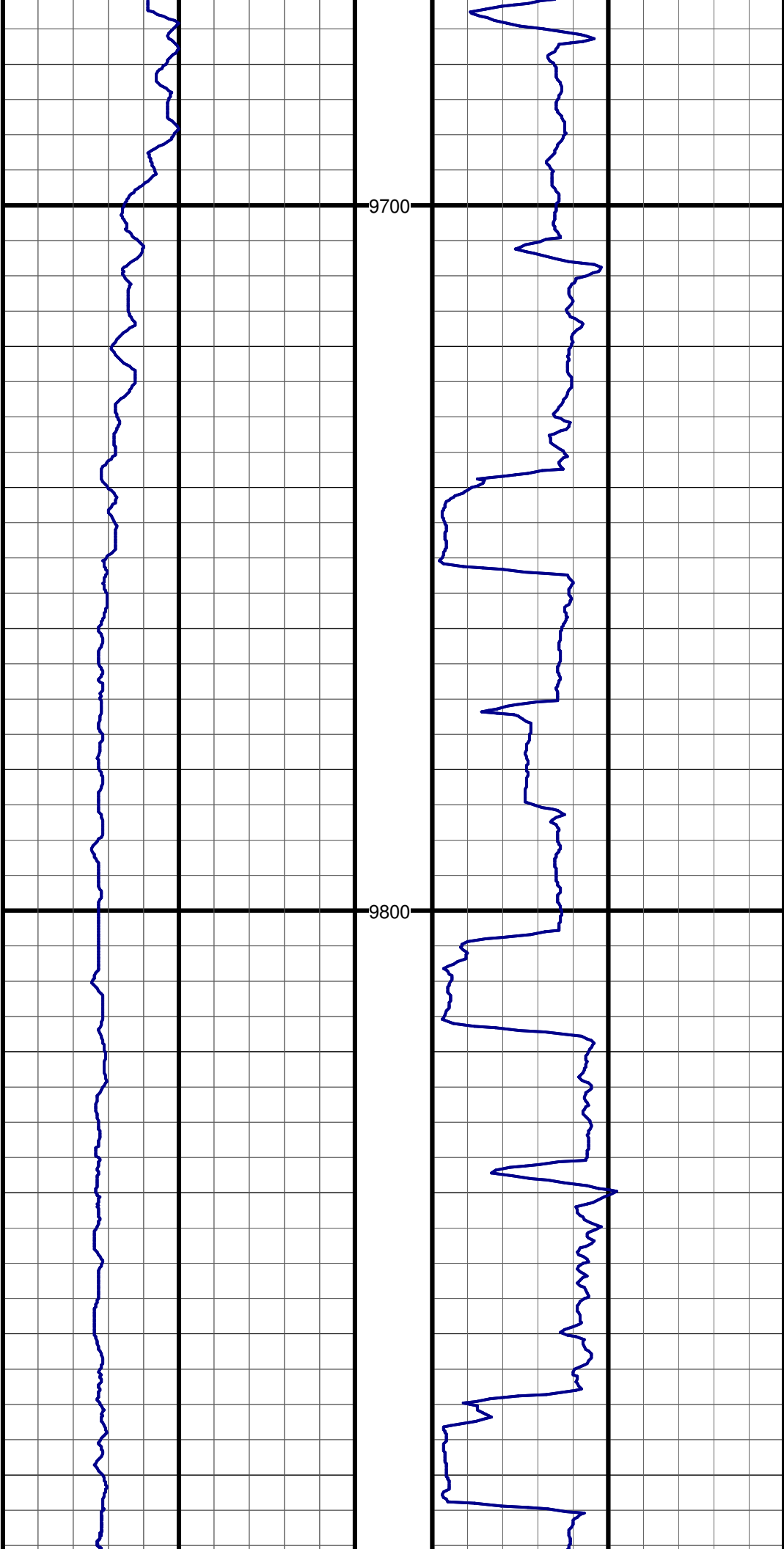




#80 MD:9492.0 TVD:7003.9 I:87.4 A:181.4 VS:2492.1

#81 MD:9556.0 TVD:7006.6 I:87.8 A:181.0 VS:2556.0

#82 MD:9619.0 TVD:7008.6 I:88.5 A:179.1 VS:2619.0

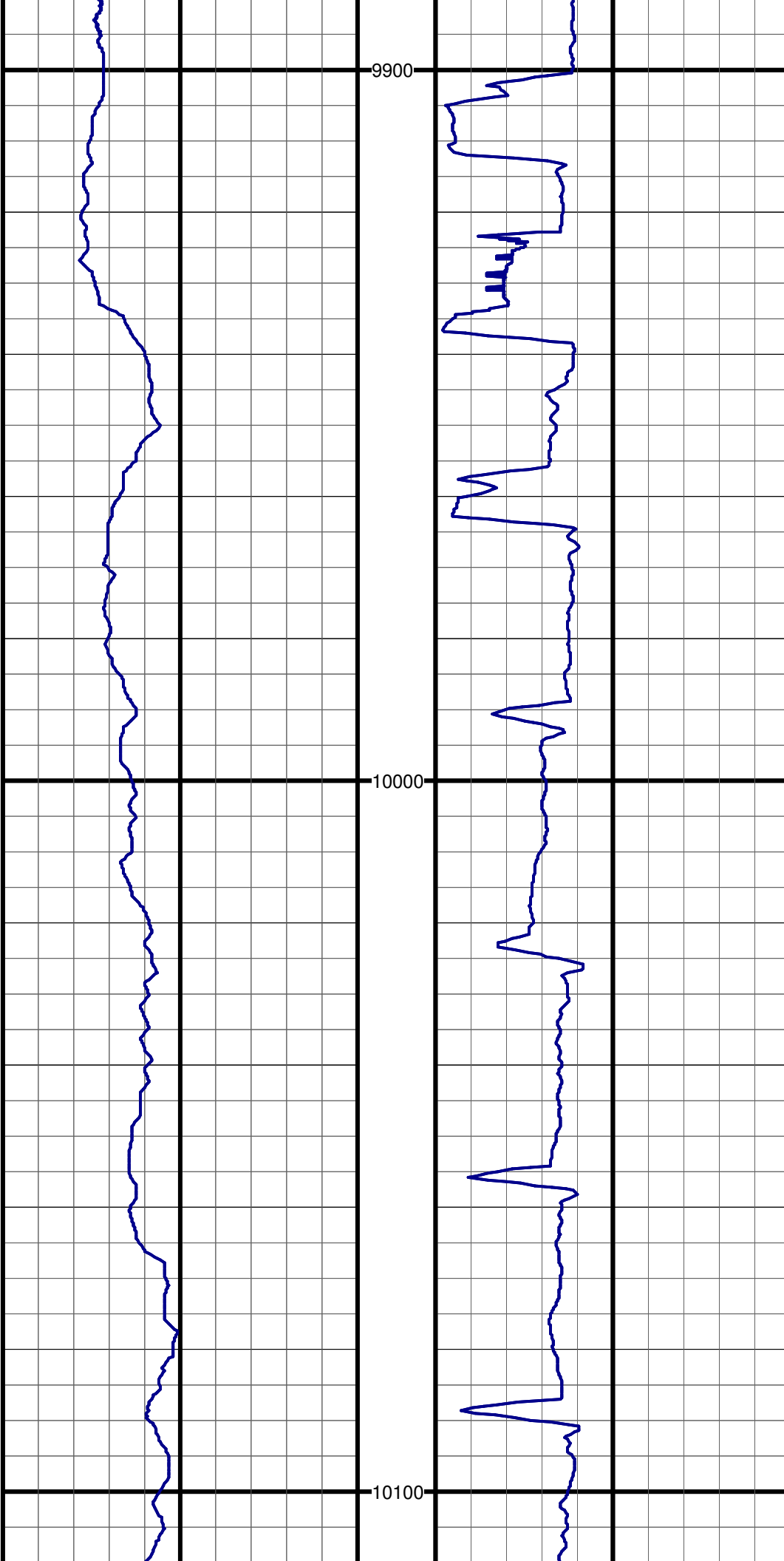


#83 MD:9682.0 TVD:7010.5 I:88.1 A:178.2 VS:2681.9

#84 MD:9746.0 TVD:7011.8 I:89.5 A:178.7 VS:2745.9

#85 MD:9809.0 TVD:7010.8 I:92.3 A:181.7 VS:2808.9

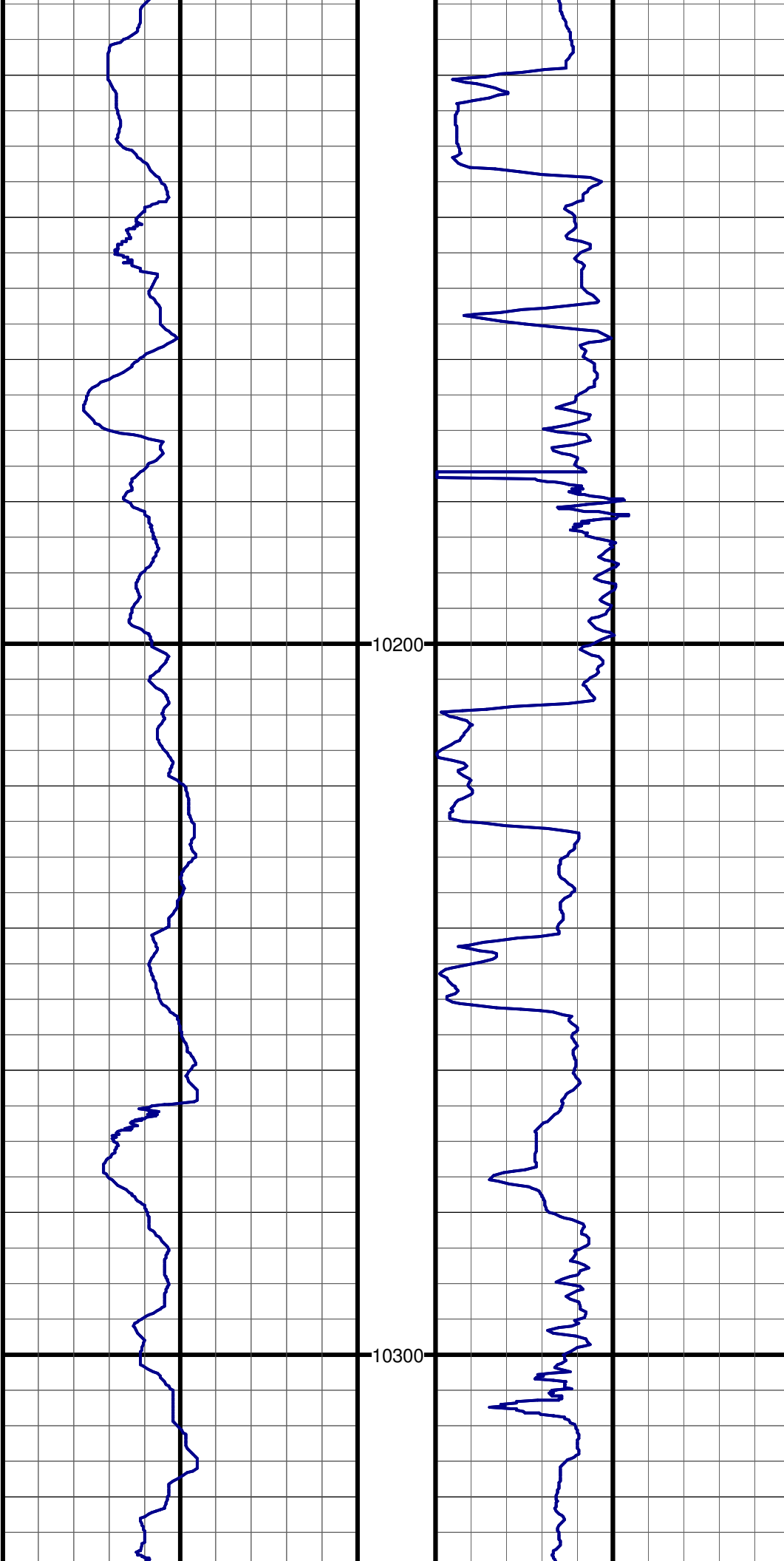
#86 MD:9872.0 TVD:7008.2 I:92.5 A:183.3 VS:2871.8



#87 MD:9936.0 TVD:7006.9 I:89.7 A:183.2 VS:2935.6

#88 MD:9999.0 TVD:7007.8 I:88.8 A:182.7 VS:2998.6

#89 MD:10062.0 TVD:7009.3 I:88.4 A:183.0 VS:3061.5

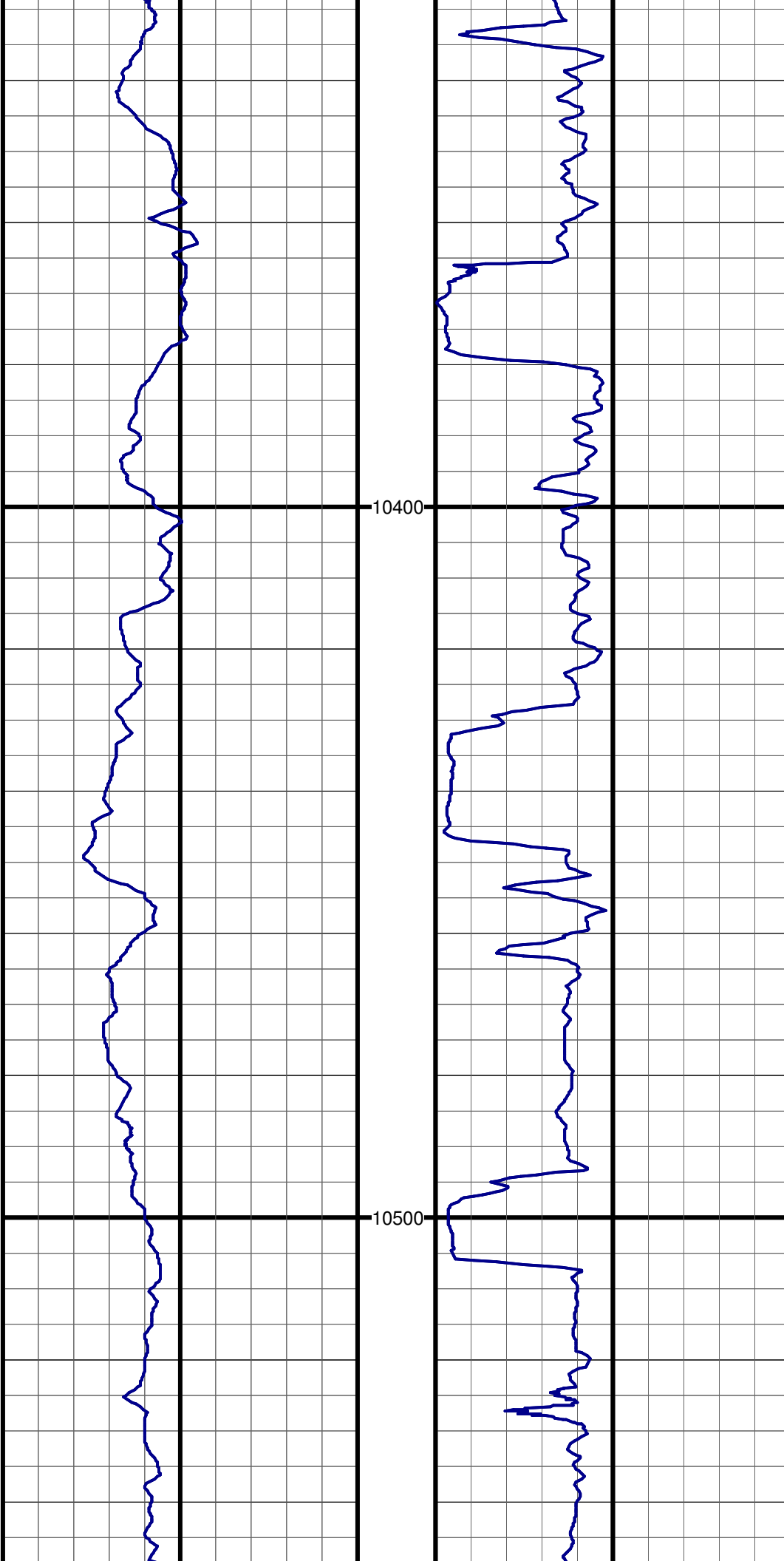


#90 MD:10126.0 TVD:7011.7 I:87.4 A:181.3 VS:3125.4

#91 MD:10189.0 TVD:7015.2 I:86.2 A:181.0 VS:3188.3

#92 MD:10252.0 TVD:7018.2 I:88.3 A:181.2 VS:3251.2

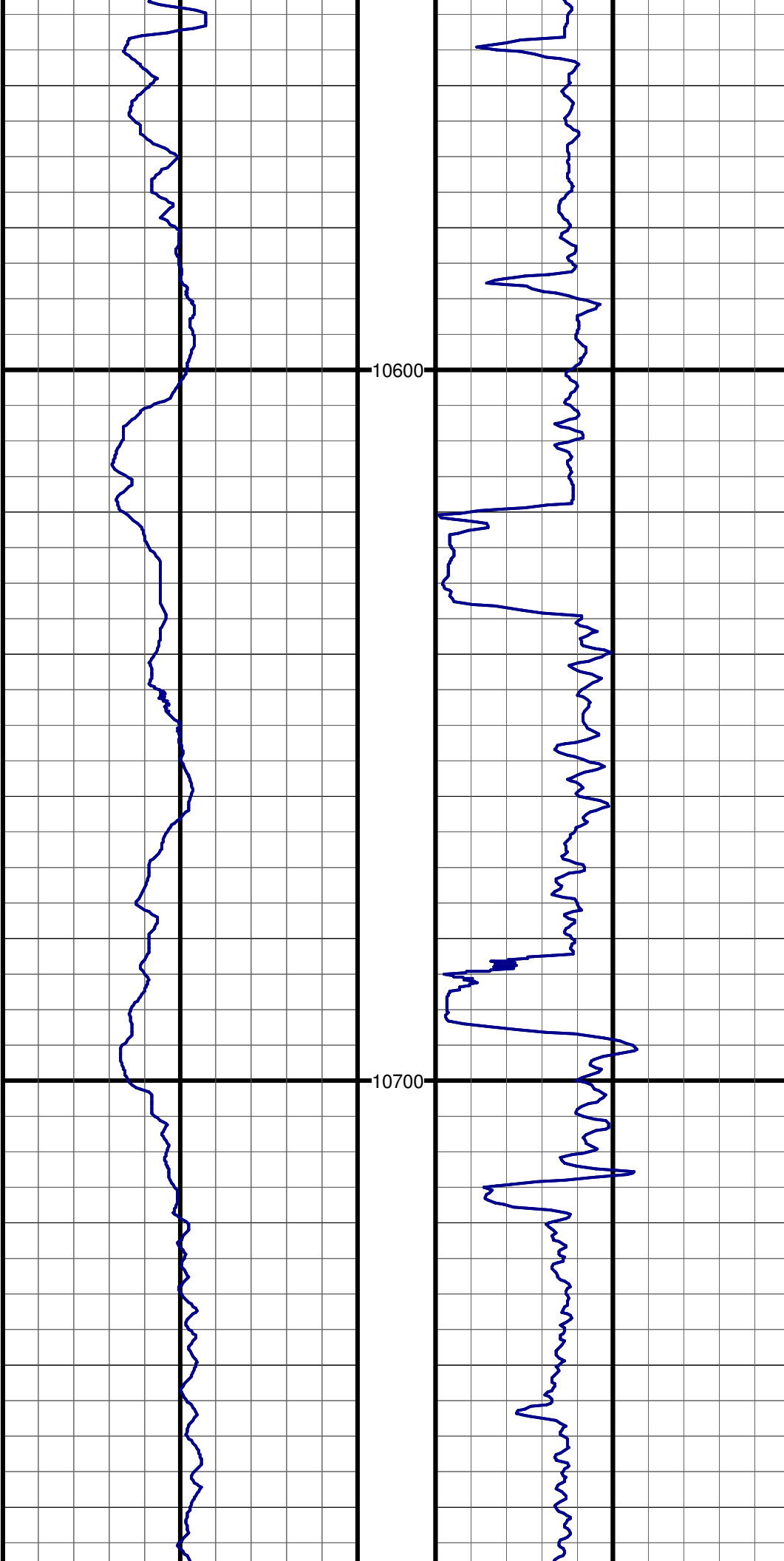
#93 MD:10315.0 TVD:7020.4 I:87.6 A:181.0 VS:3314.1



#94 MD:10378.0 TVD:7022.9 I:88.0 A:180.8 VS:3377.1

#95 MD:10442.0 TVD:7024.5 I:89.1 A:179.7 VS:3441.0

#96 MD:10505.0 TVD:7025.0 I:90.0 A:178.5 VS:3504.0

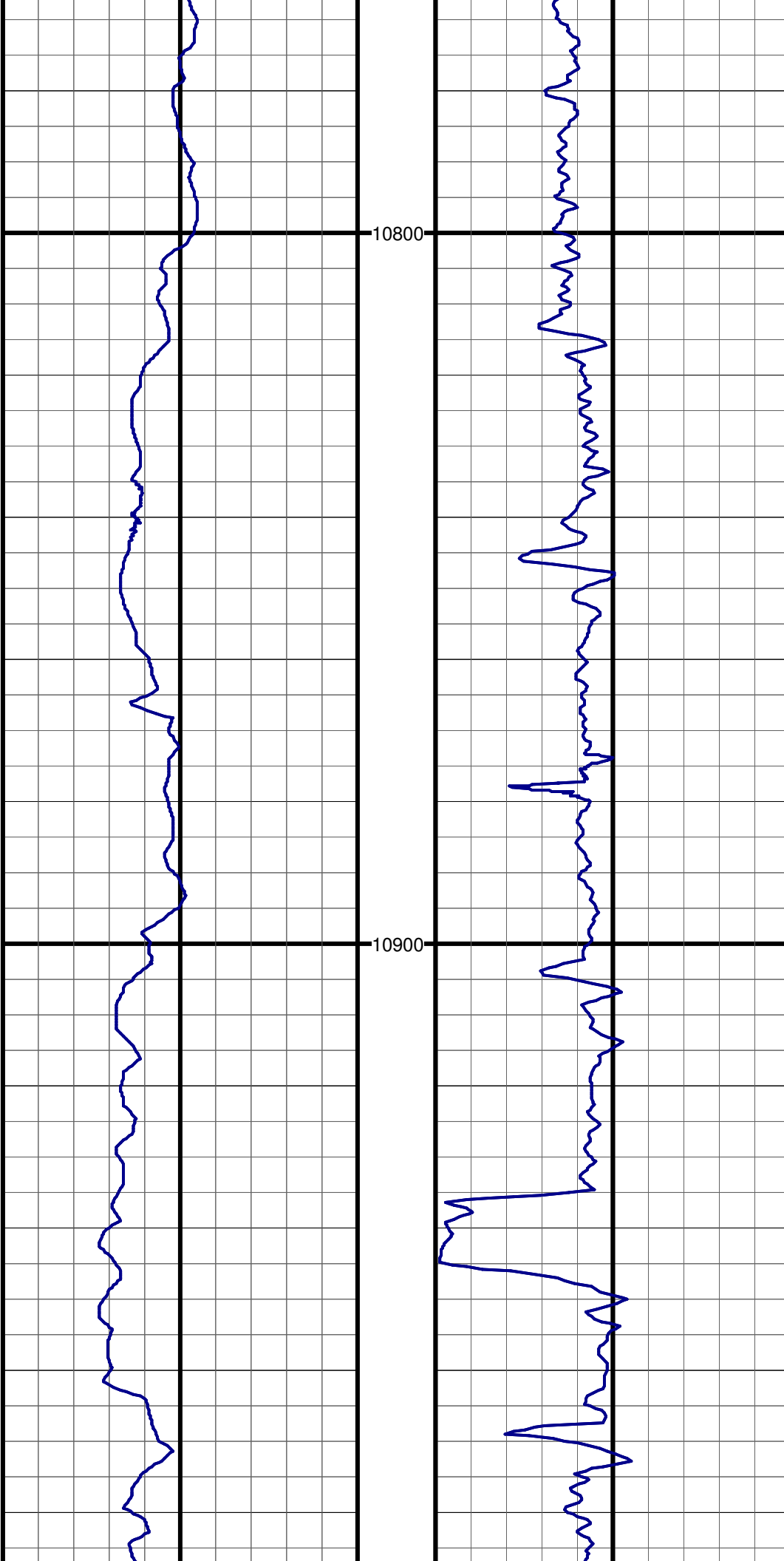


#97 MD:10569.0 TVD:7025.2 I:89.6 A:178.2 VS:3568.0

#98 MD:10632.0 TVD:7025.3 I:90.2 A:178.8 VS:3631.0

#99 MD:10695.0 TVD:7024.7 I:90.9 A:179.6 VS:3694.0

#100 MD:10759.0 TVD:7023.9 I:90.6 A:179.3 VS:3758.0



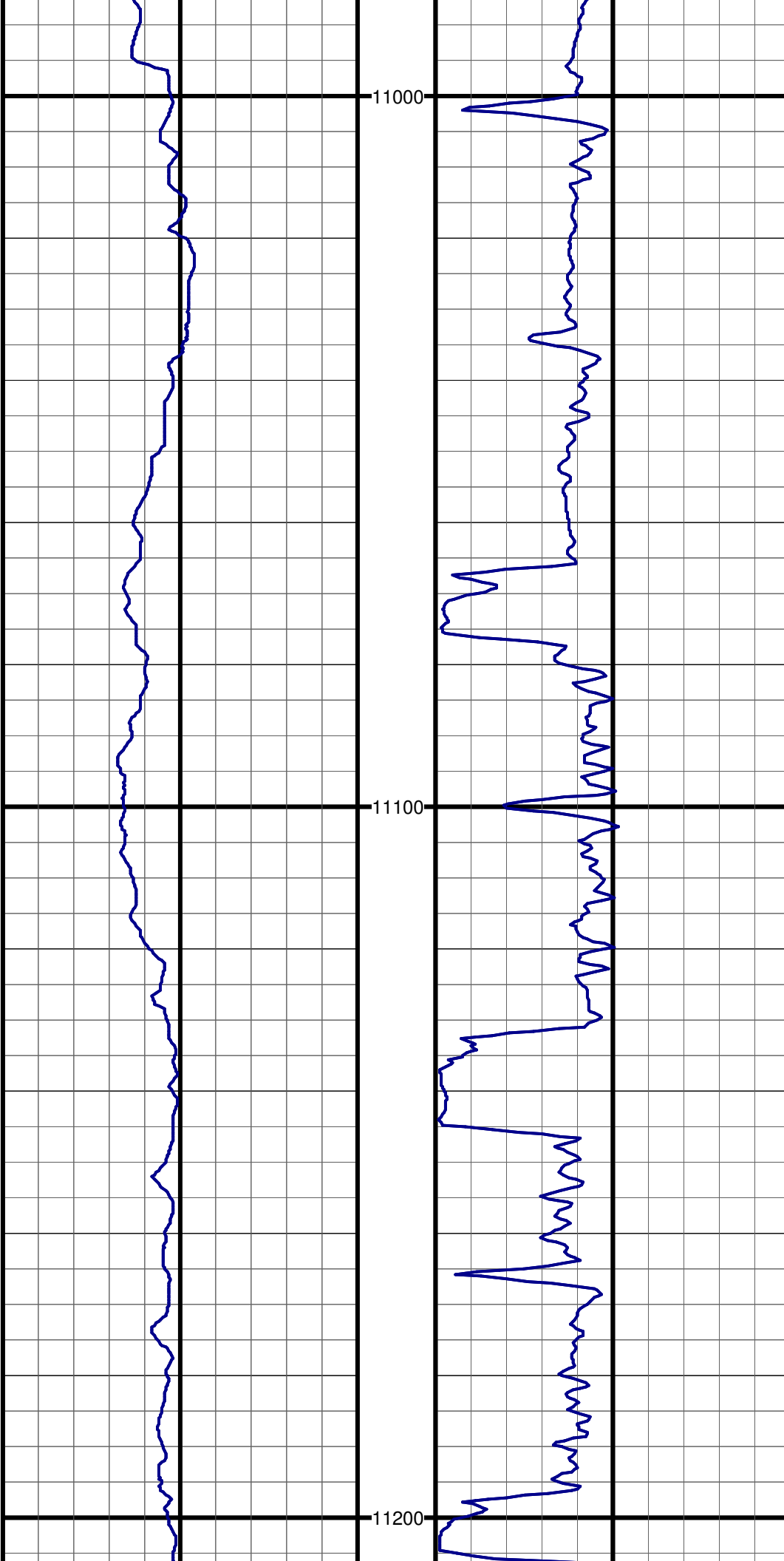
10800

#101 MD:10822.0 TVD:7023.2 I:90.6 A:179.5 VS:3820.9

#102 MD:10886.0 TVD:7022.6 I:90.5 A:179.5 VS:3884.9

10900

#103 MD:10949.0 TVD:7021.5 I:91.4 A:179.1 VS:3947.9



#104 MD:11013.0 TVD:7020.1 I:91.2 A:177.9 VS:4011.9

#105 MD:11076.0 TVD:7018.8 I:91.2 A:177.2 VS:4074.8

#106 MD:11140.0 TVD:7016.5 I:92.8 A:176.7 VS:4138.7

#107 MD:11203.0 TVD:7012.6 I:94.3 A:177.4 VS:4201.5

