

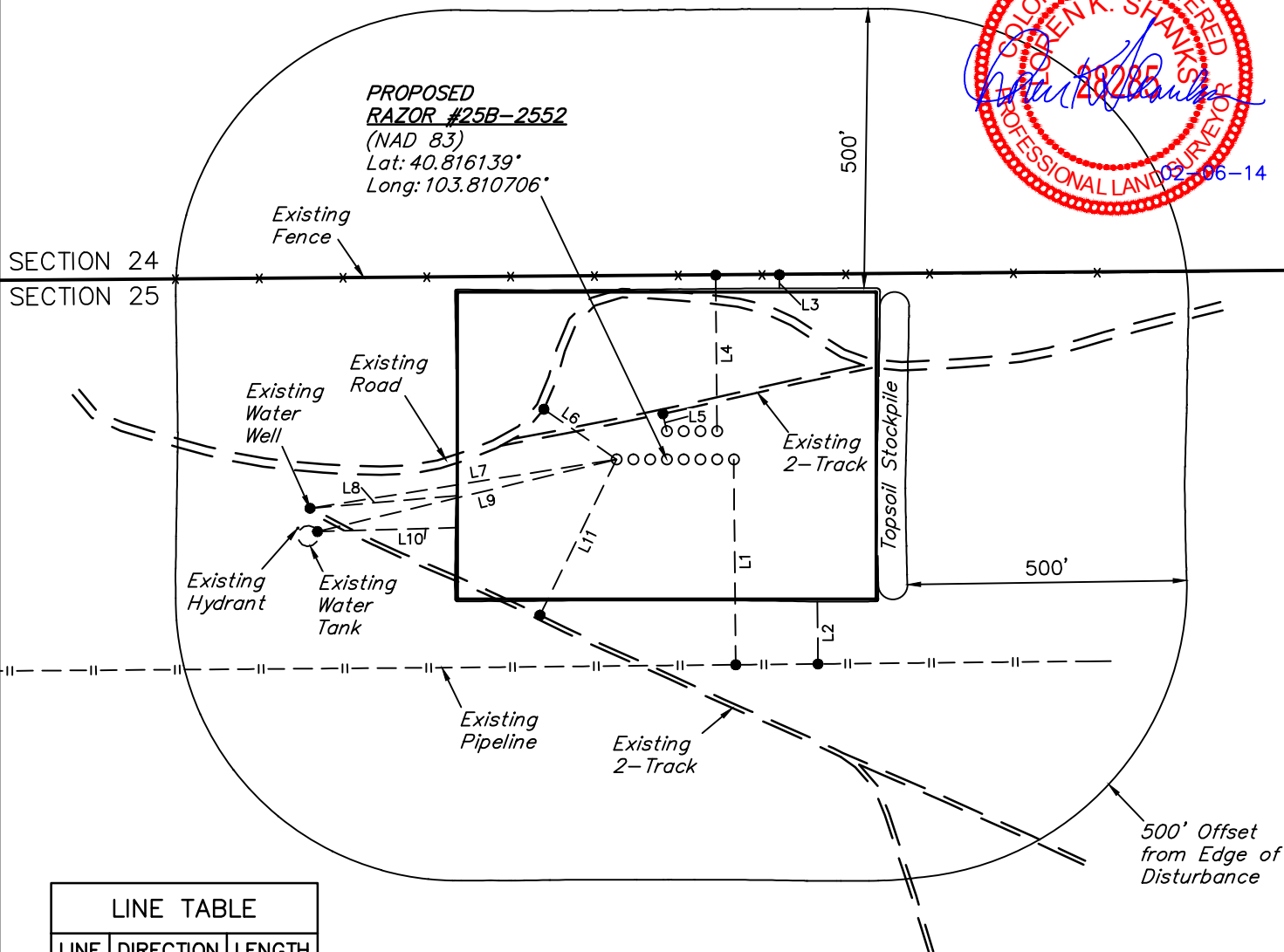
WHITING OIL & GAS CORP.

LOCATION DRAWING FOR

RAZOR #25B-2549, #25B-2550, #25B-2551,
#25B-2552, #25B-2553, #25B-2554, #25B-2555,
#25B-2556, #25B-2409, #25B-2410,
#25B-2411 & #25B-2412

SECTION 25, T10N, R58W, 6th P.M.
NW 1/4 NE 1/4

SCALE: 1" = 300'
DATE SURVEYED: 10-10-13
SURVEYED BY: DALLAS NIELSEN
DATE DRAWN: 10-17-13
DRAWN BY: J.S.
REV: 01-22-14 H.K.W.



LINE TABLE

LINE	DIRECTION	LENGTH
L1	S01°E	368'
L2	S01°E	112'
L3	NORTH	24'
L4	NORTH	280'
L5	N12°W	33'
L6	N55°W	158'
L7	S81°W	555'
L8	S85°W	263'
L9	S76°W	551'
L10	S88°W	247'
L11	S26°W	311'